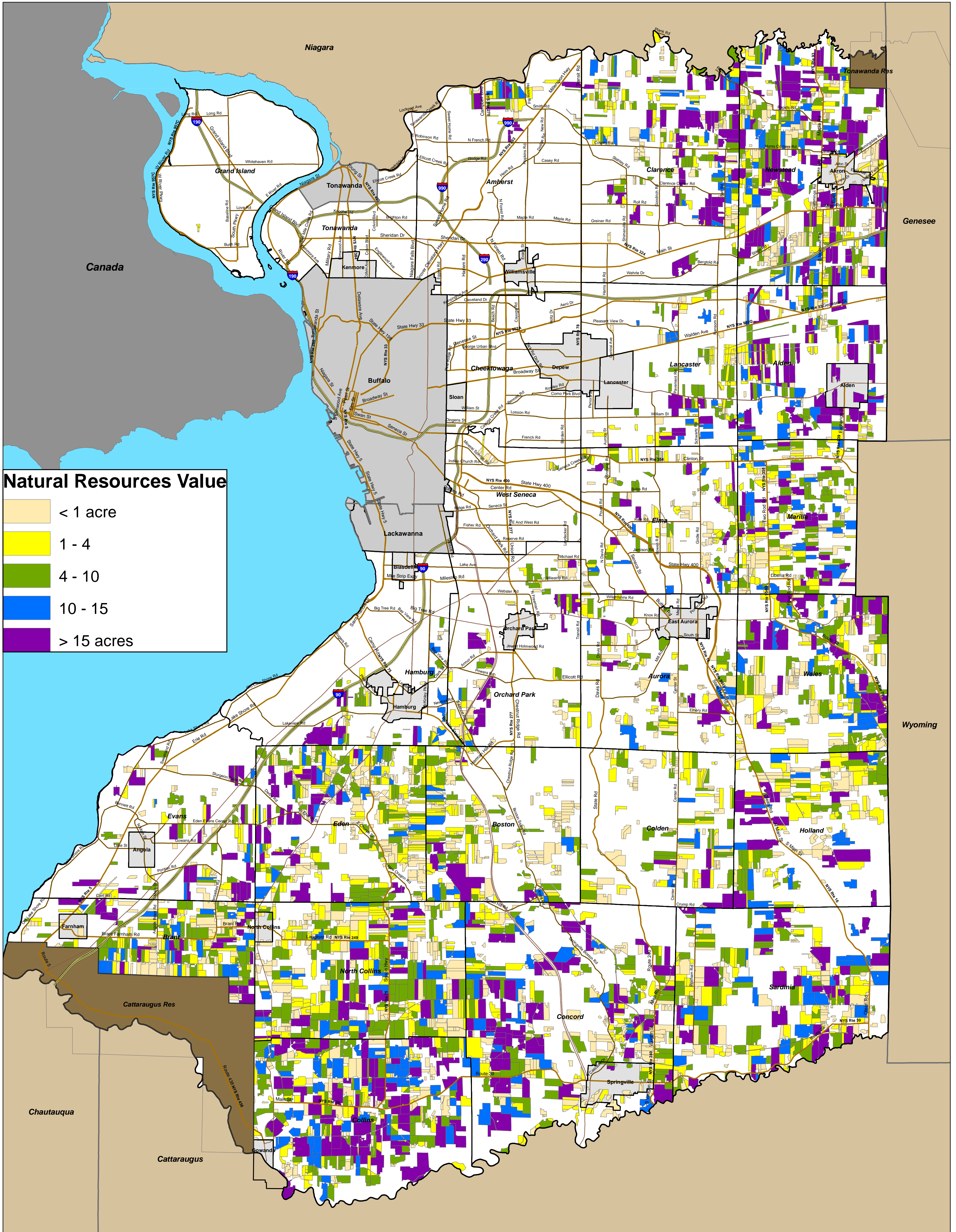


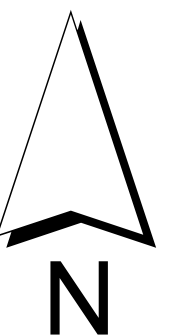
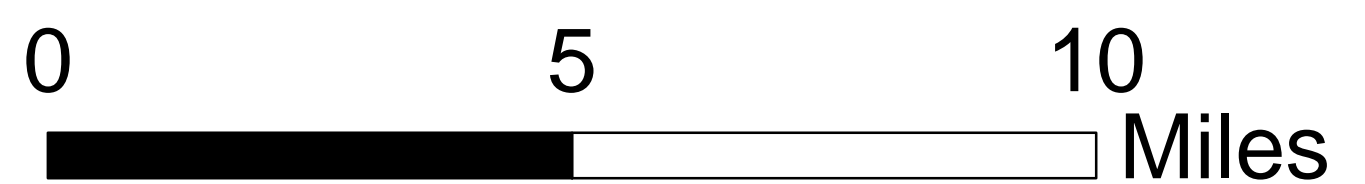
Natural Resources Rating



Natural Resources Value

- < 1 acre
- 1 - 4
- 4 - 10
- 10 - 15
- > 15 acres

Natural Resources Rating based on:
Acres within 75 feet of a mapped stream +
Acres of Federal or State Wetlands,
including 100' buffer from NYS wetlands +
Acres within 500 feet of Lake Erie shoreline



CREATED: December 2, 2011
 REVISED: April 2, 2012



SOURCE: Parcel shapefiles provided by Erie County Department of Planning.
 Agricultural parcels determined by presence of cropland.
 Cropland coverage (not shown) provided by Erie County Soil & Water Conservation District.
 Rating scheme developed by Stuart I. Brown Associates.