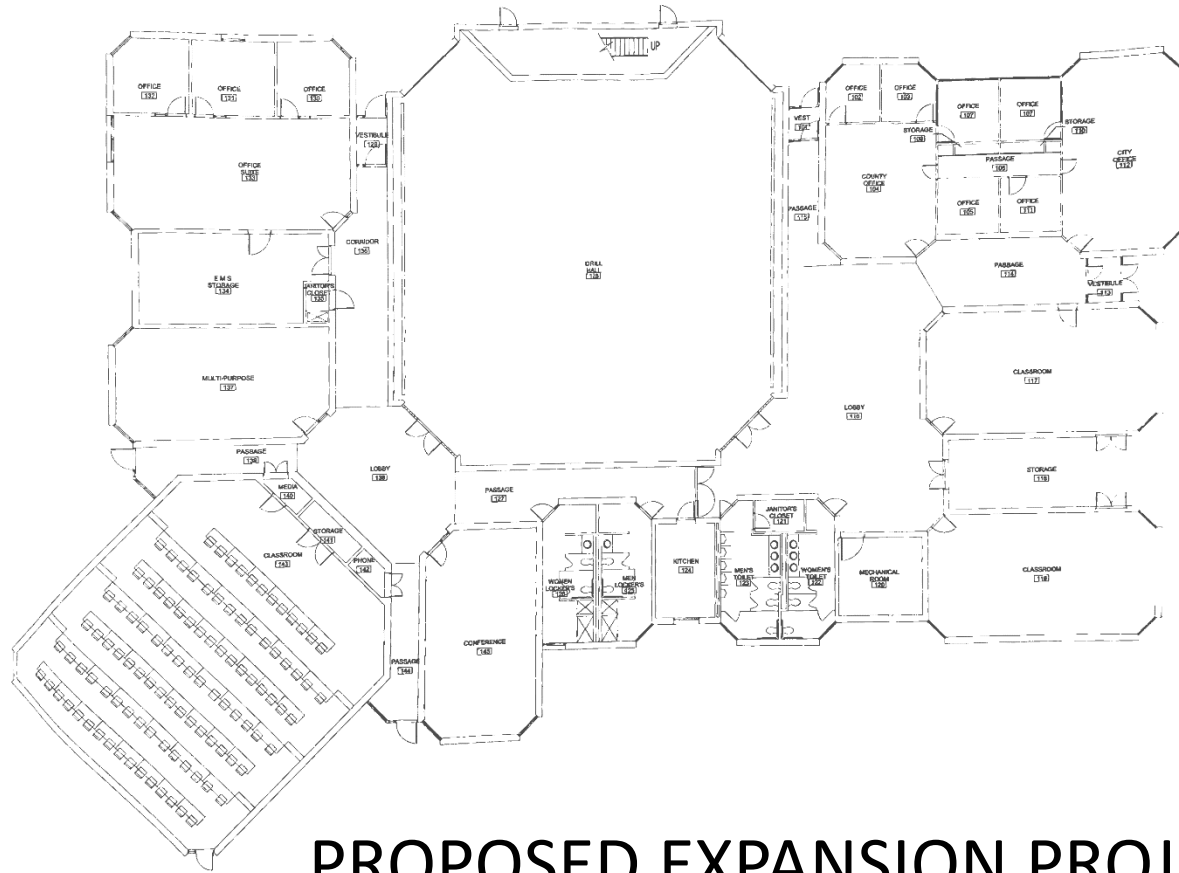
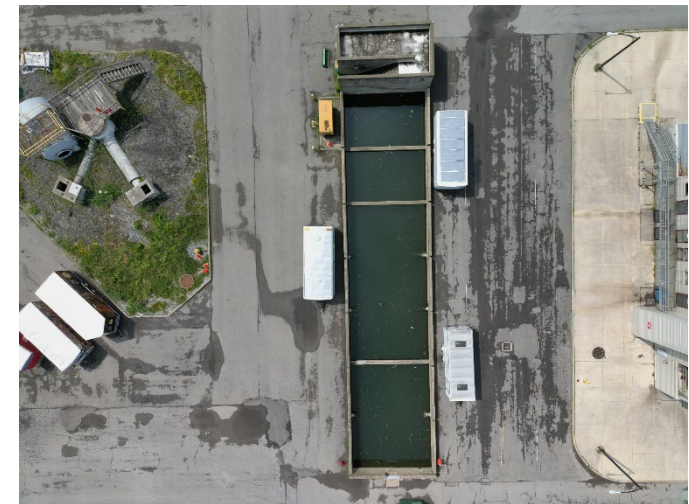


# Erie County Department of Homeland Security & Emergency Services

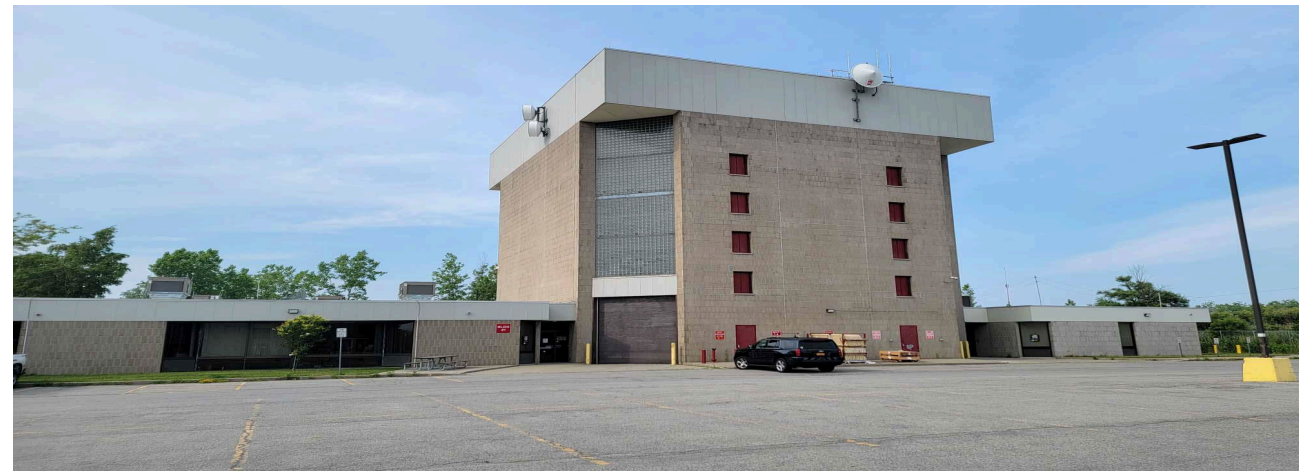


# PROPOSED EXPANSION PROJECT



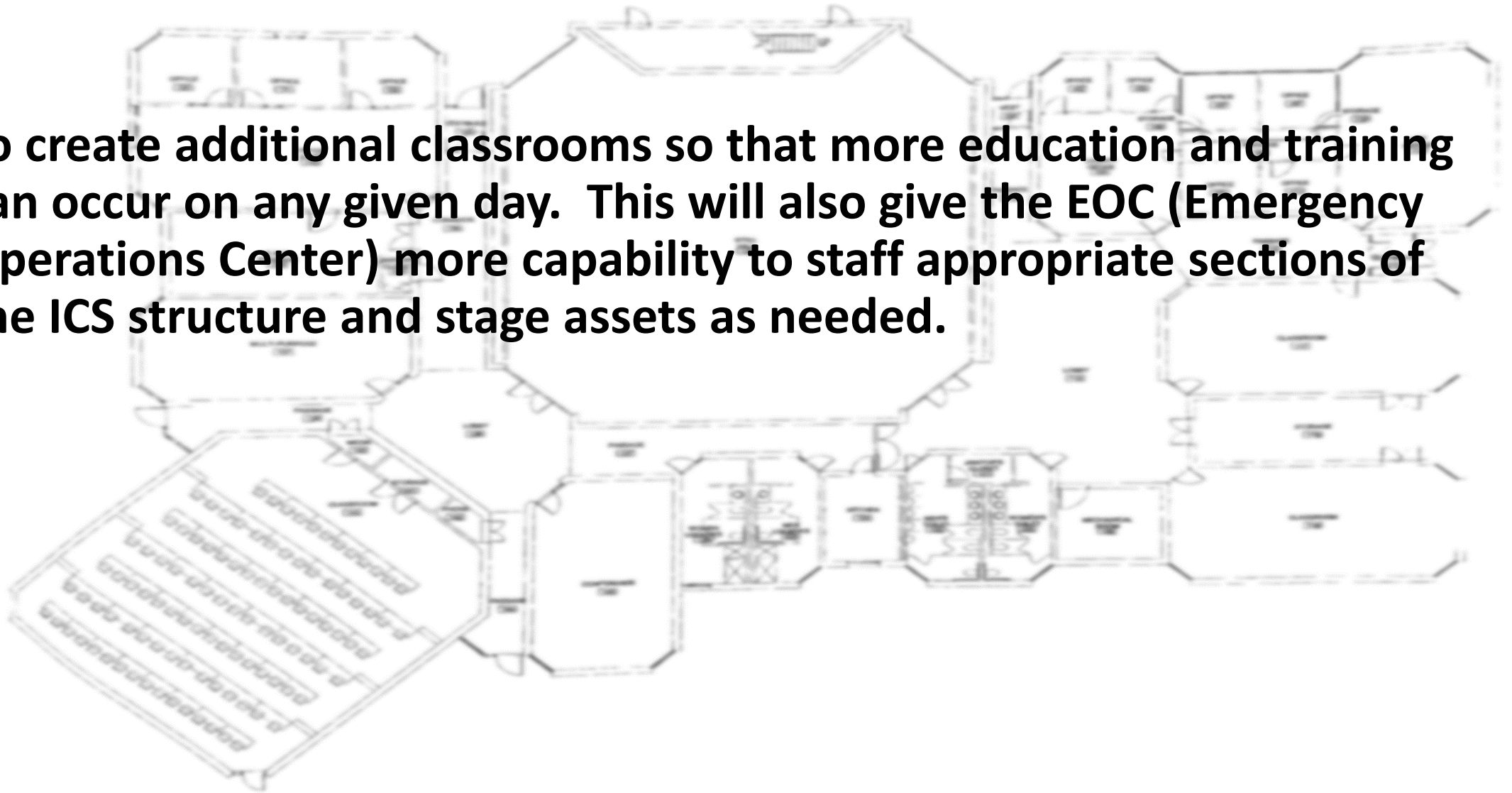
# Capital Project

- **With an increase in usage of the facility along with increased needs for EOC activations, the Department of Homeland Security and Emergency Services is requesting funds for expansion of the current facility.**
- **The proposed 2025 project is phase (1) of a long range plan.**



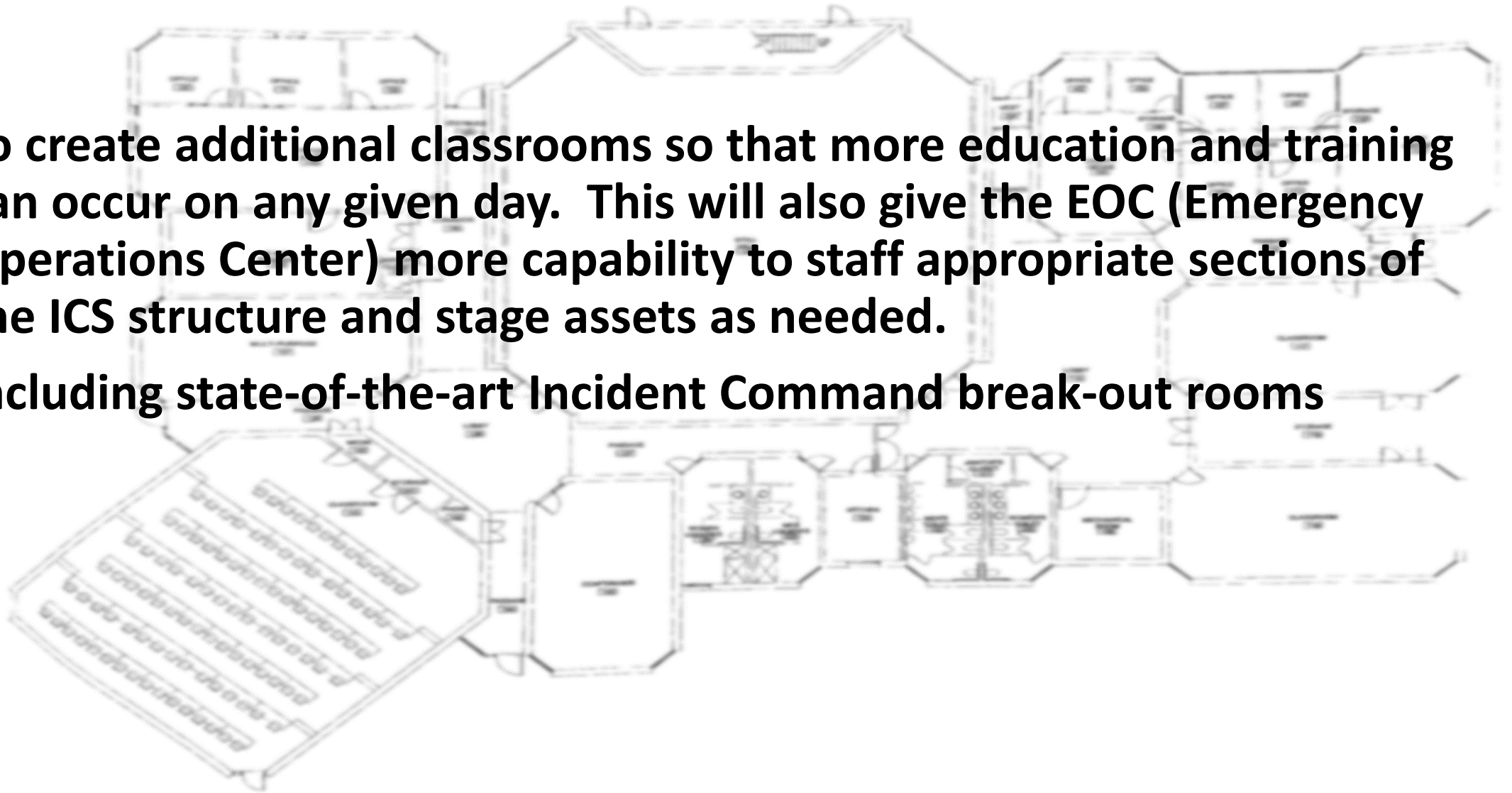
- **Proposal**

- **To create additional classrooms so that more education and training can occur on any given day. This will also give the EOC (Emergency Operations Center) more capability to staff appropriate sections of the ICS structure and stage assets as needed.**



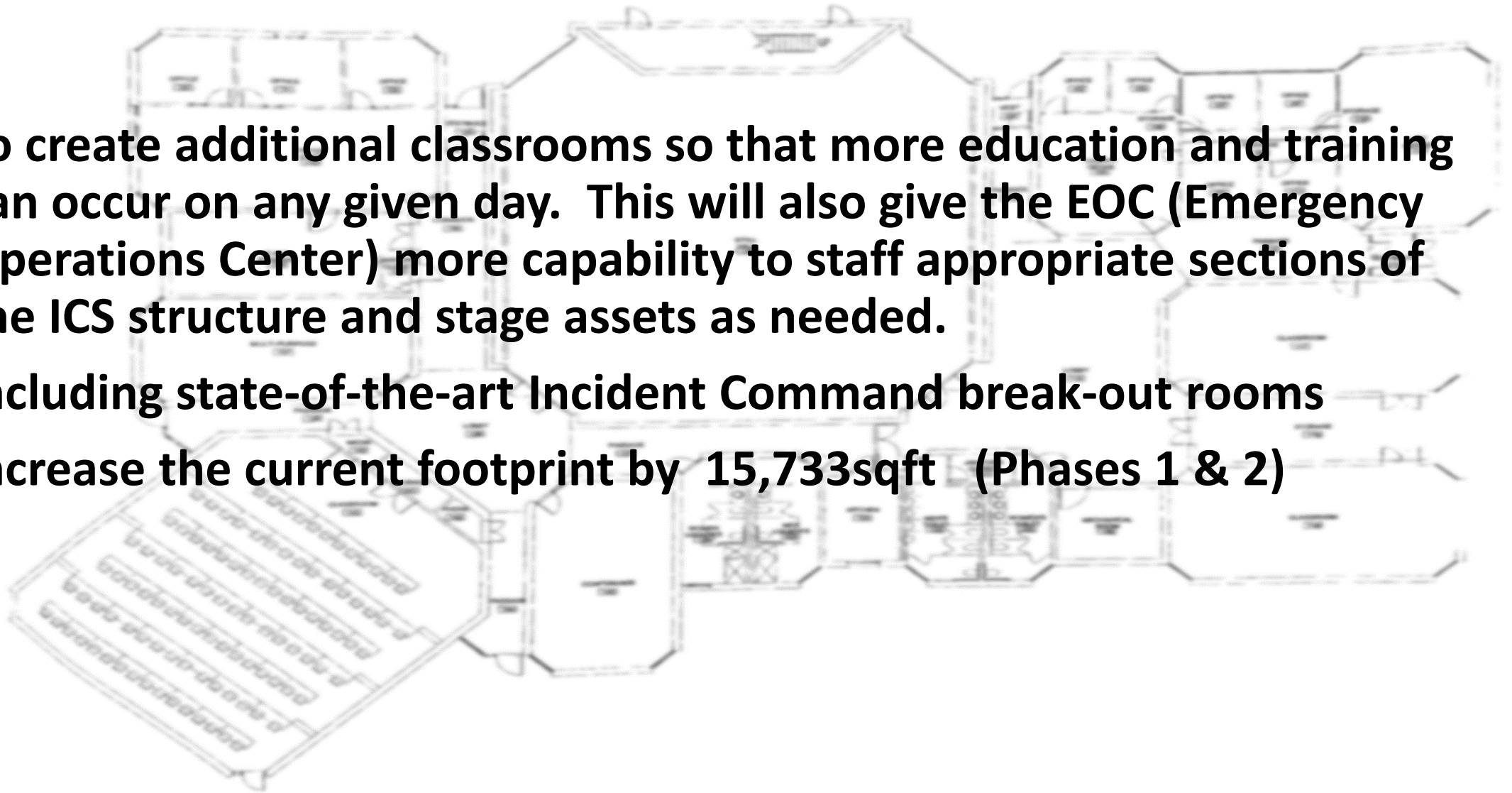
- **Proposal**

- **To create additional classrooms so that more education and training can occur on any given day. This will also give the EOC (Emergency Operations Center) more capability to staff appropriate sections of the ICS structure and stage assets as needed.**
- **Including state-of-the-art Incident Command break-out rooms**



- **Proposal**

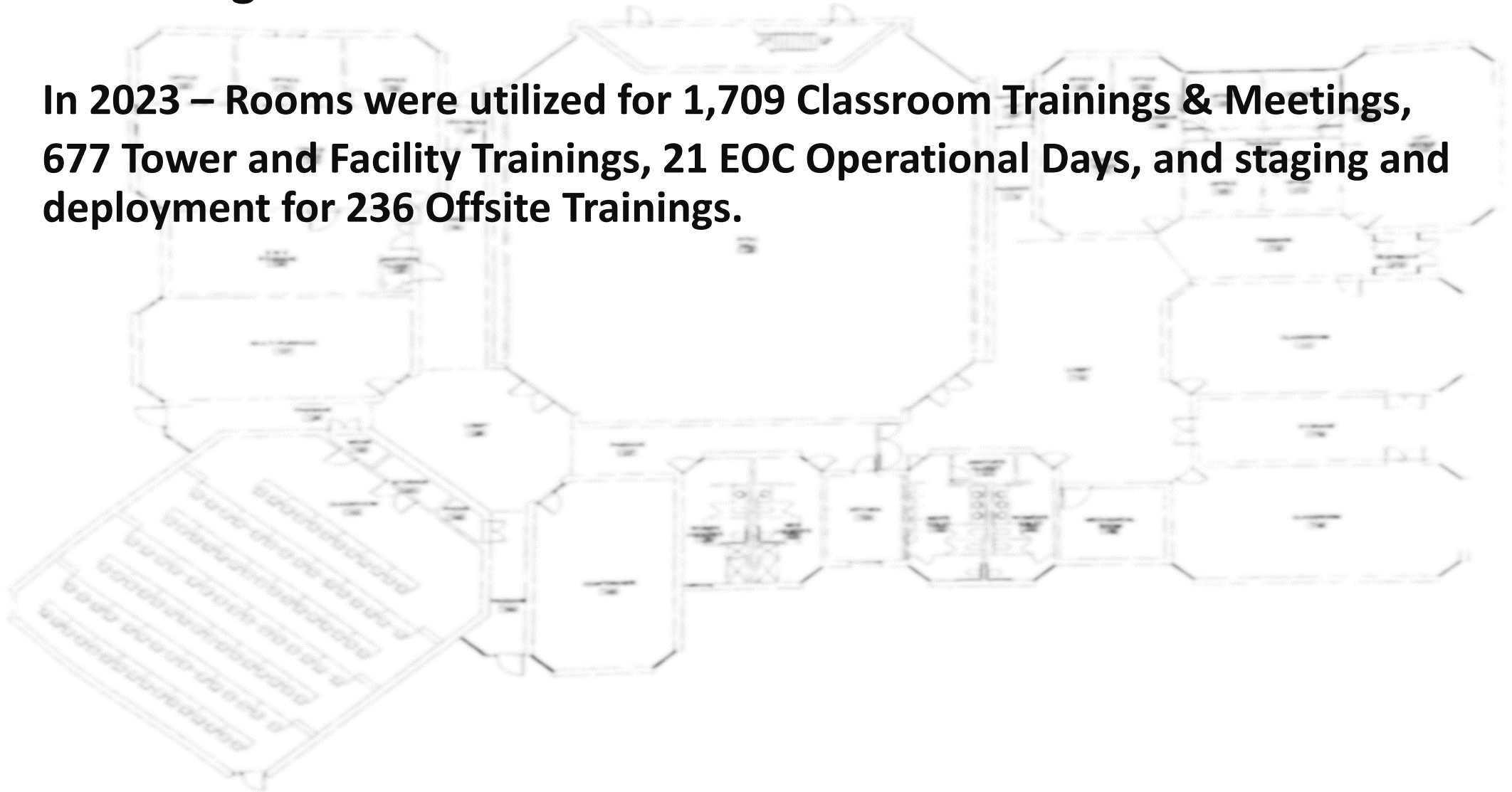
- **To create additional classrooms so that more education and training can occur on any given day. This will also give the EOC (Emergency Operations Center) more capability to staff appropriate sections of the ICS structure and stage assets as needed.**
- **Including state-of-the-art Incident Command break-out rooms**
- **Increase the current footprint by 15,733sqft (Phases 1 & 2)**





- **Room Usage**

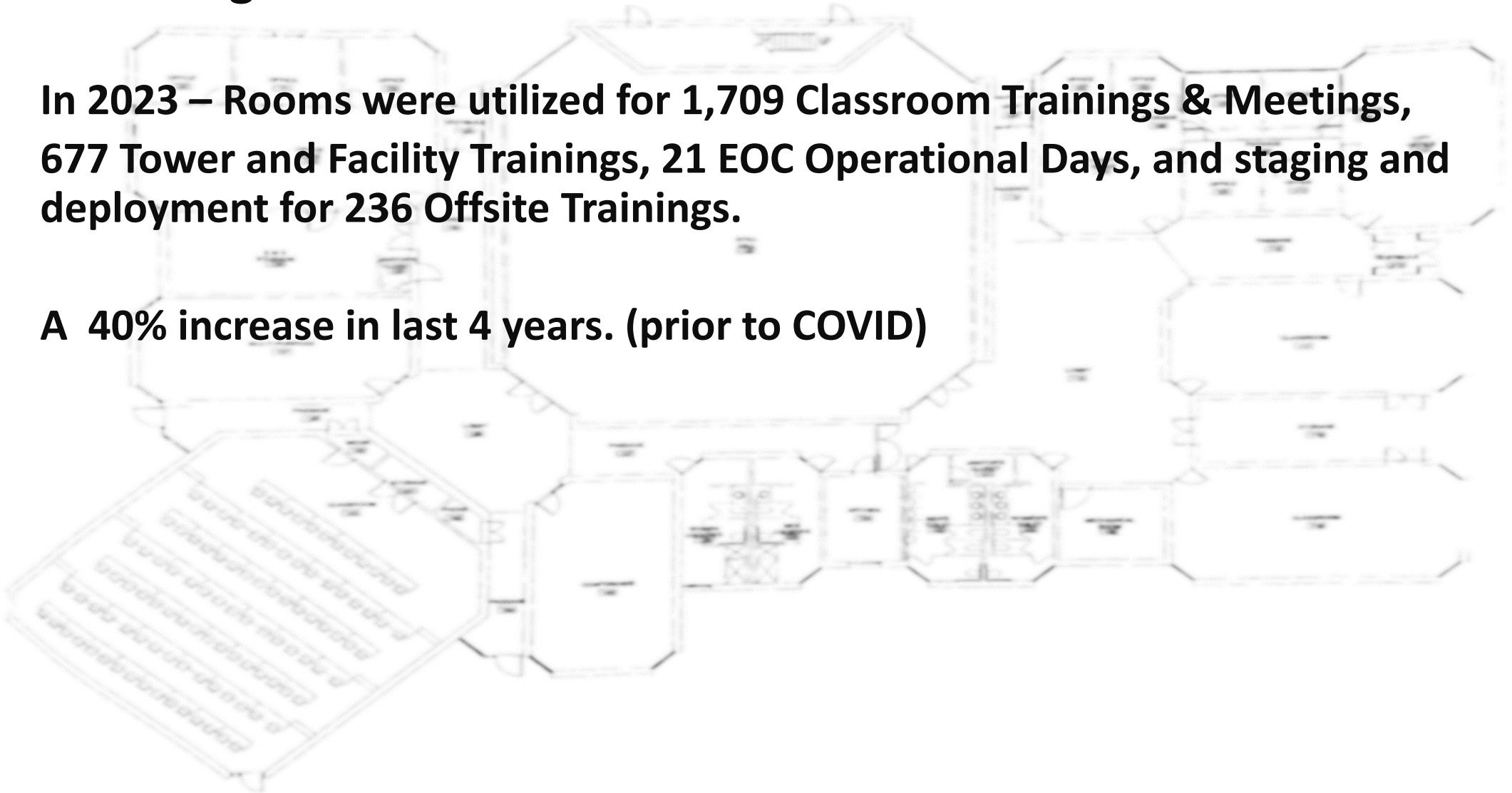
**In 2023 – Rooms were utilized for 1,709 Classroom Trainings & Meetings, 677 Tower and Facility Trainings, 21 EOC Operational Days, and staging and deployment for 236 Offsite Trainings.**



- **Room Usage**

**In 2023 – Rooms were utilized for 1,709 Classroom Trainings & Meetings, 677 Tower and Facility Trainings, 21 EOC Operational Days, and staging and deployment for 236 Offsite Trainings.**

**A 40% increase in last 4 years. (prior to COVID)**

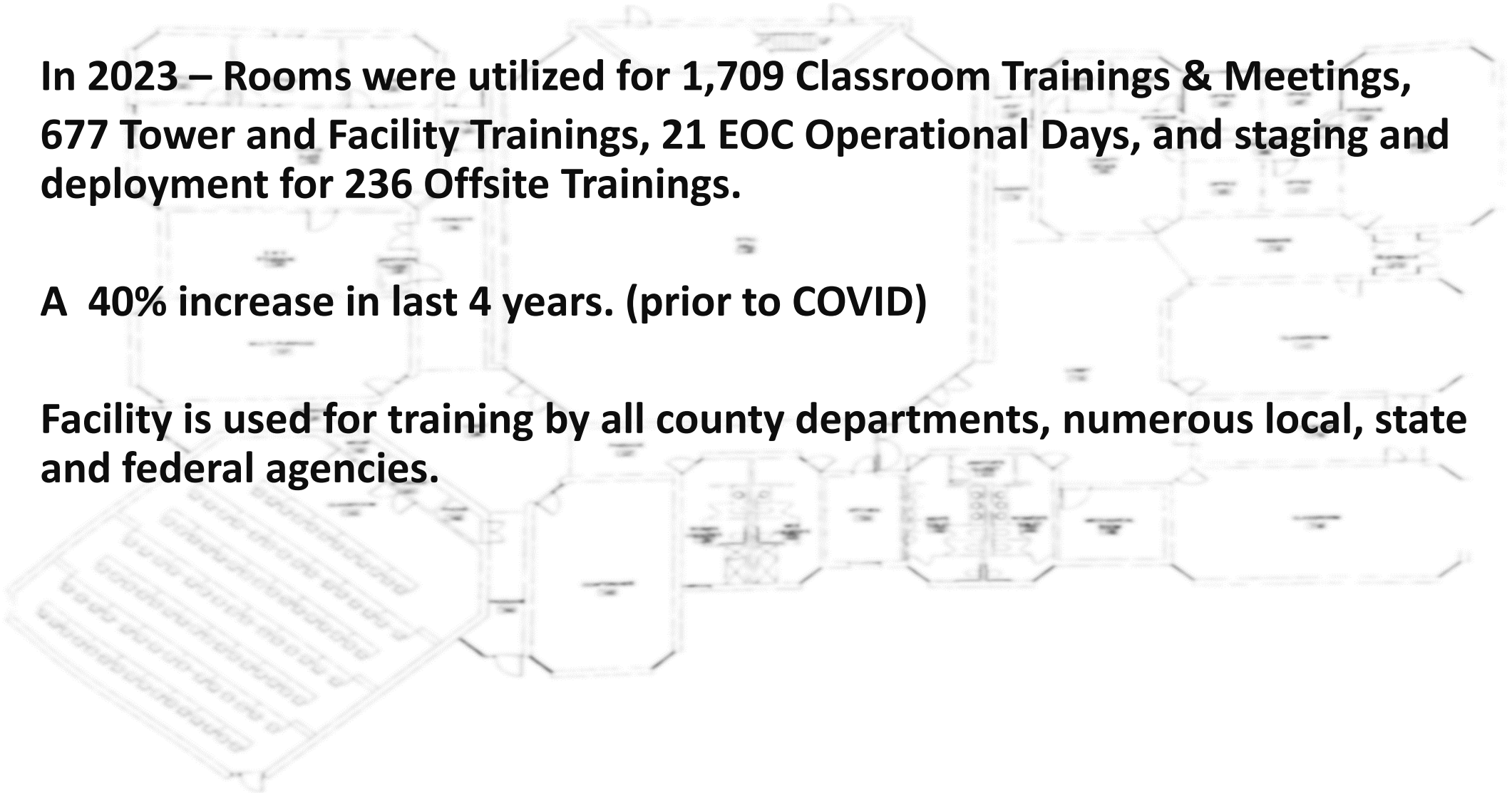


- **Room Usage**

**In 2023 – Rooms were utilized for 1,709 Classroom Trainings & Meetings, 677 Tower and Facility Trainings, 21 EOC Operational Days, and staging and deployment for 236 Offsite Trainings.**

**A 40% increase in last 4 years. (prior to COVID)**

**Facility is used for training by all county departments, numerous local, state and federal agencies.**





- **Room Usage**

**In 2023 – Rooms were utilized for 1,709 Classroom Trainings & Meetings, 677 Tower and Facility Trainings, 21 EOC Operational Days, and staging and deployment for 236 Offsite Trainings.**

**This is a 40% increase in last 4 years. (prior to COVID)**

**The current facility is used for training by various departments within county government along with multiple local, state and federal agencies.**

**During natural disasters or large-scale events, the entire facility is converted into the Emergency Operations Center (EOC) required to facilitate expedited response and recovery resources, including dispatching capabilities.**

- **Room Usage**

**In 2023 – Rooms were utilized for 1,709 Classroom Trainings & Meetings, 677 Tower and Facility Trainings, 21 EOC Operational Days, and staging and deployment for 236 Offsite Trainings.**

**This is a 40% increase in last 4 years. (prior to COVID)**

**The current facility is used for training by various departments within county government along with multiple local, state and federal agencies.**

**During natural disasters or large-scale events, the entire facility is converted into the Emergency Operations Center (EOC) required to facilitate expedited response and recovery resources, including dispatching capabilities.**

**We have experienced multiple days throughout the year where the entire campus is booked. This requires classes and meetings to be cancelled or scheduled at offsite locations.**

# Current Facility





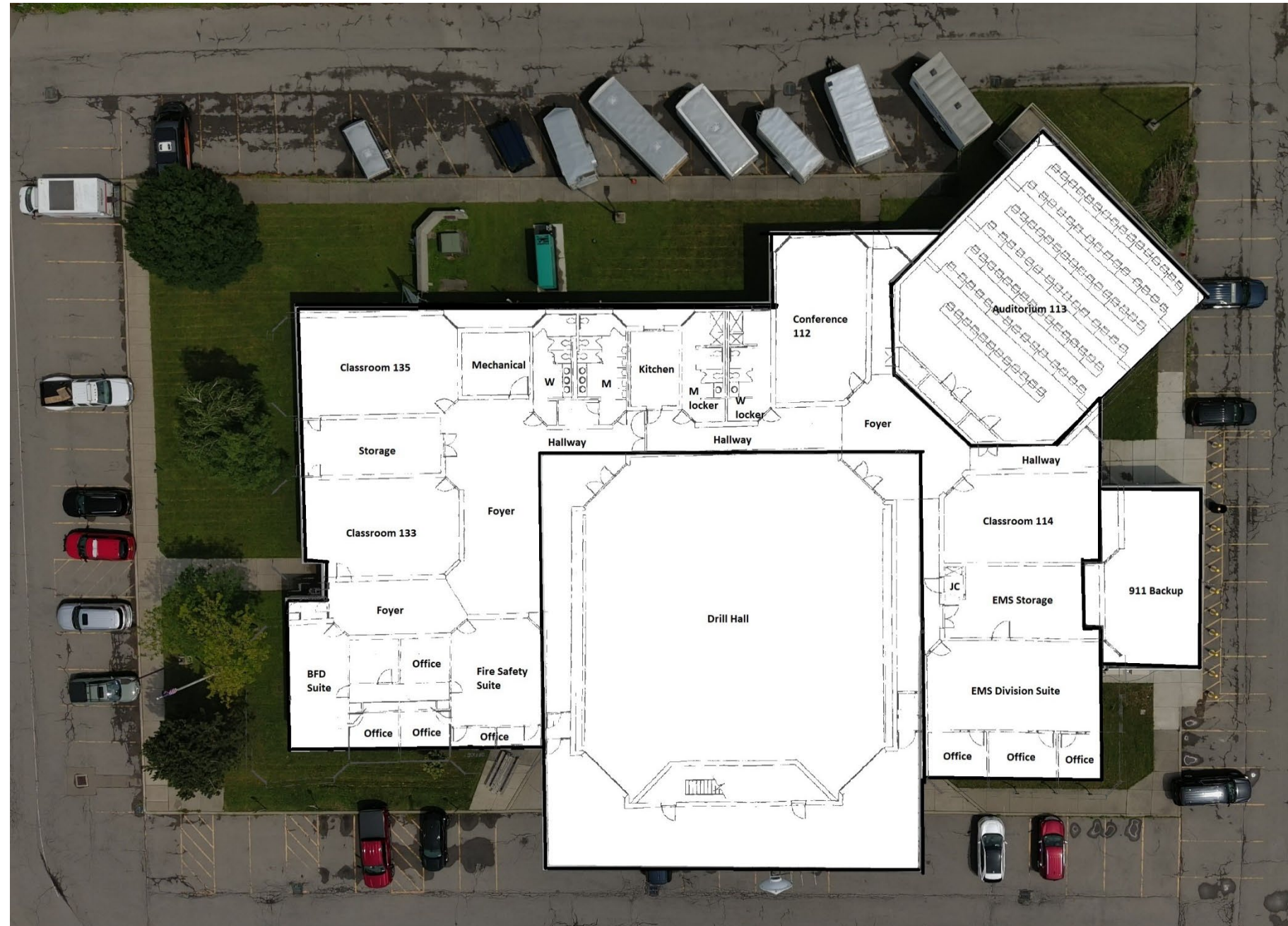
## Current Facility -

Has 5 usable classrooms

- Two Classroom's = 22x40
- Conference Room = 17x33
- Smaller Classroom = 20x36
- Auditorium = 50 x 55

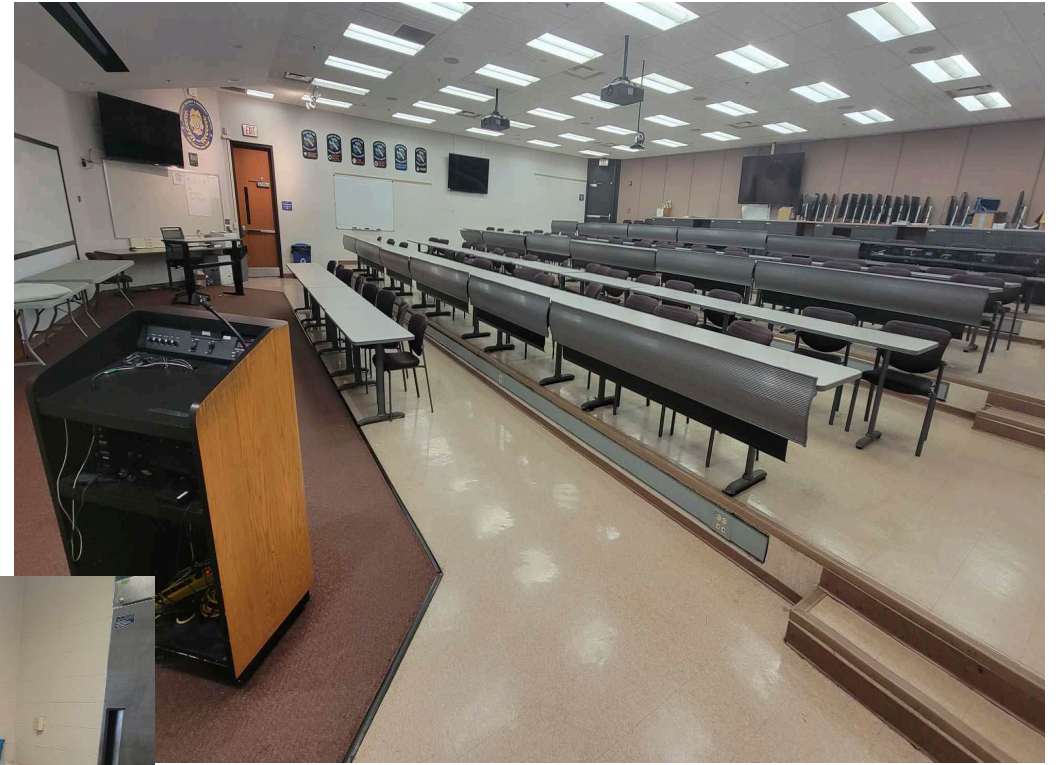
## Plus

- Kitchen = 17x10
- Men and Women's Bathroom = 25x10 each



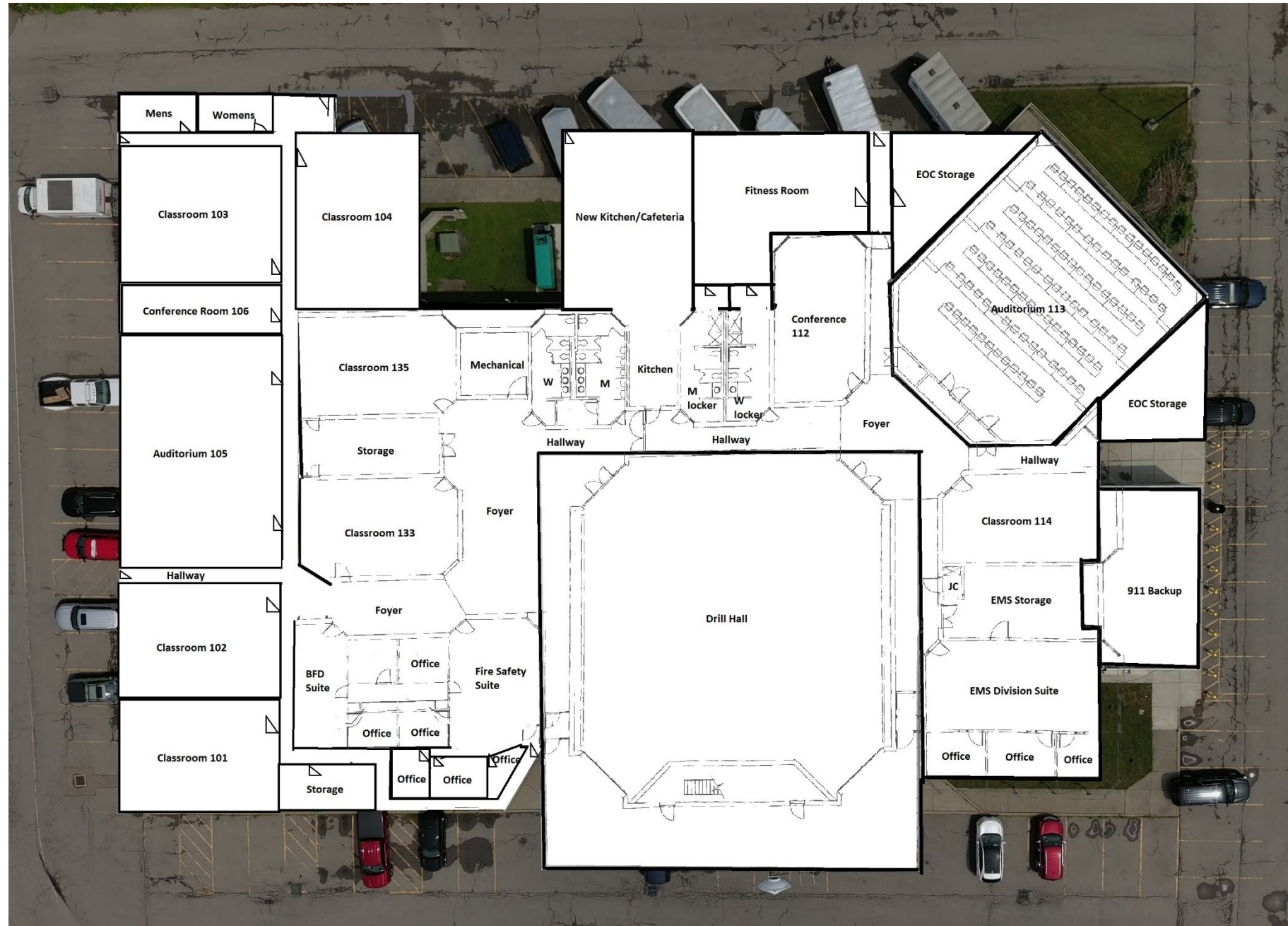


# • Current Facility Challenges





# Phase 1

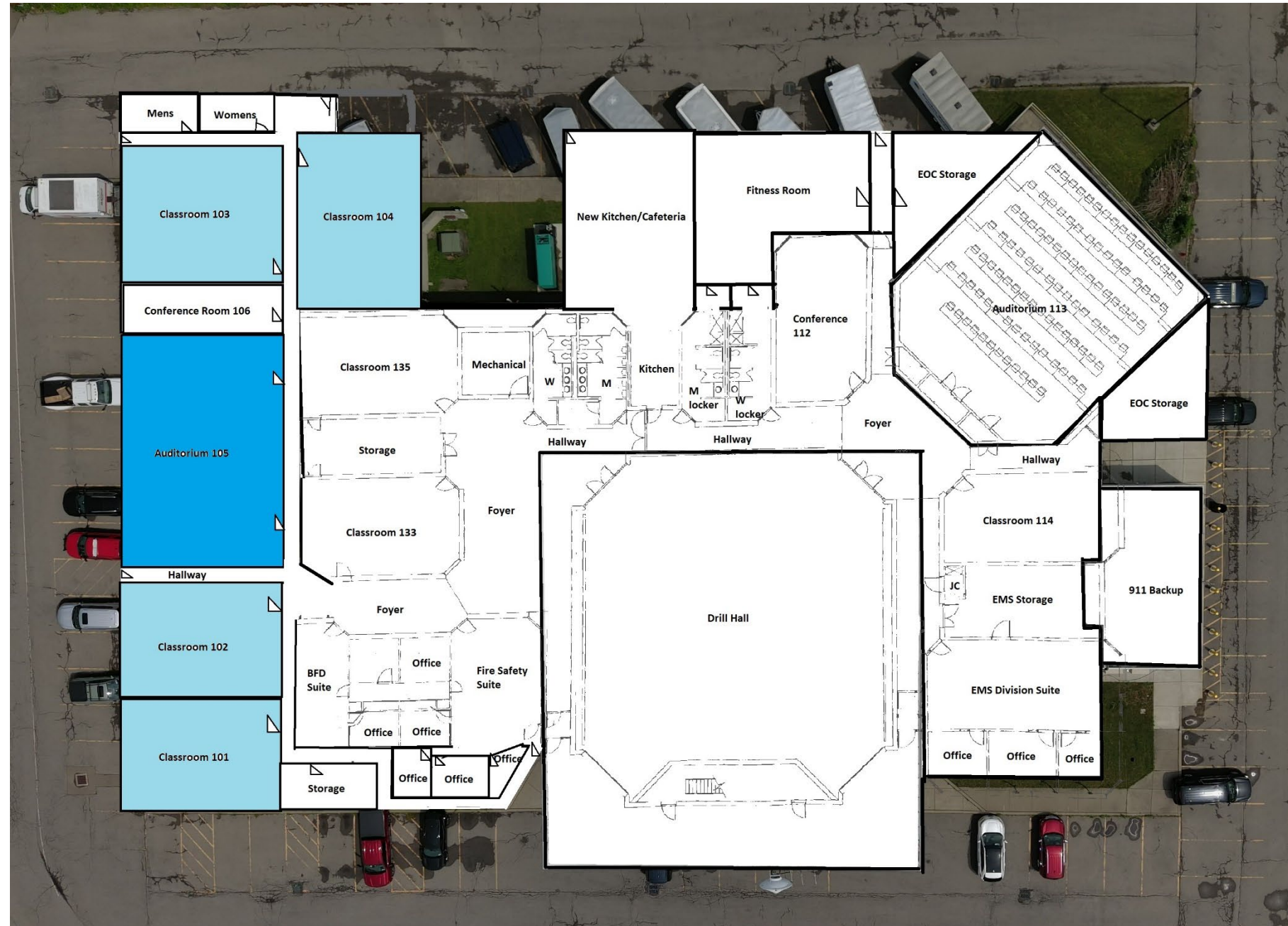




- Adding 4 new classrooms comparable in size to our existing classrooms.

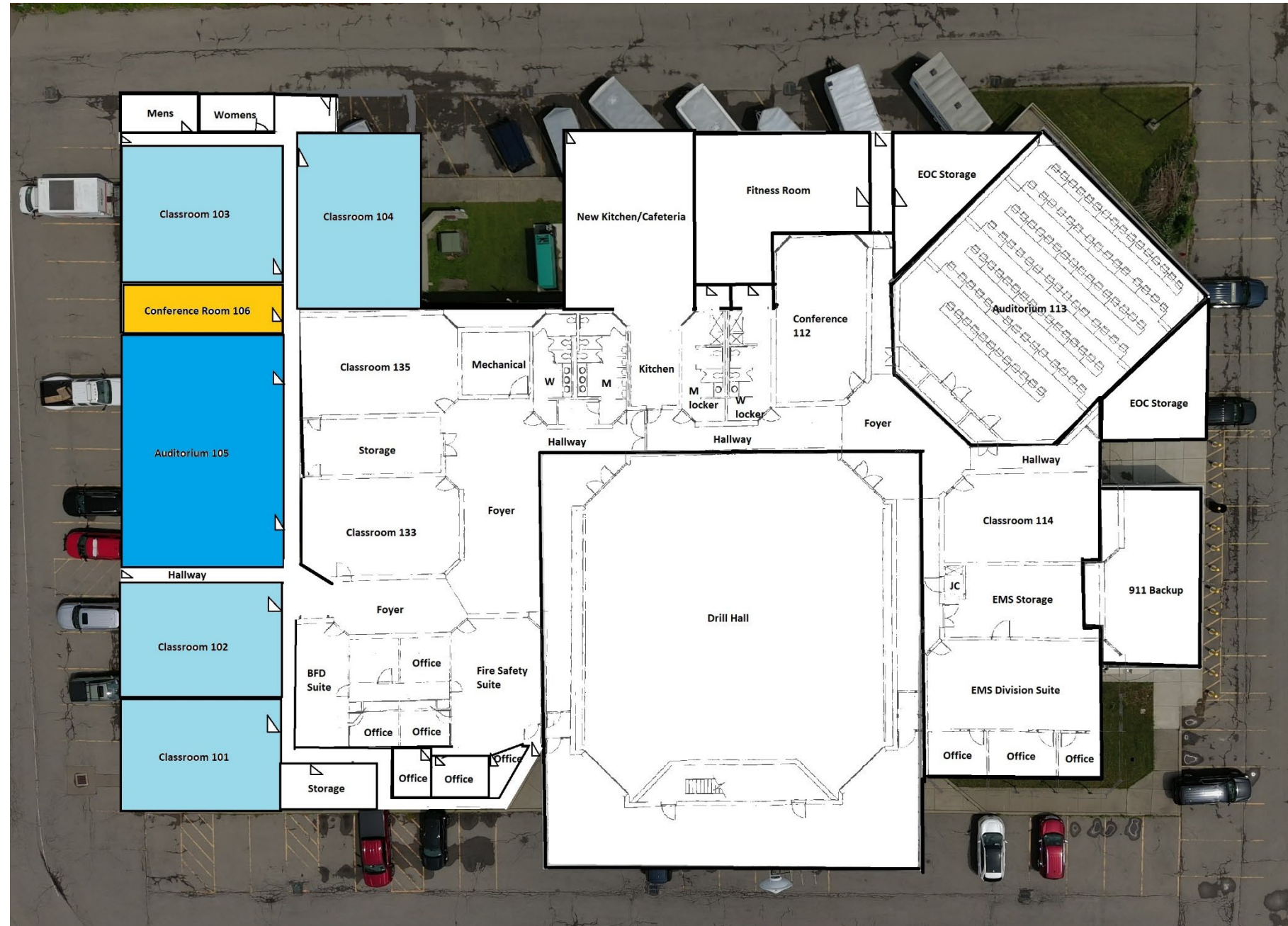


- Adding 4 new classrooms comparable in size to our existing classrooms.
- Adding a 2<sup>nd</sup> Auditorium to facilitate larger classes and meetings

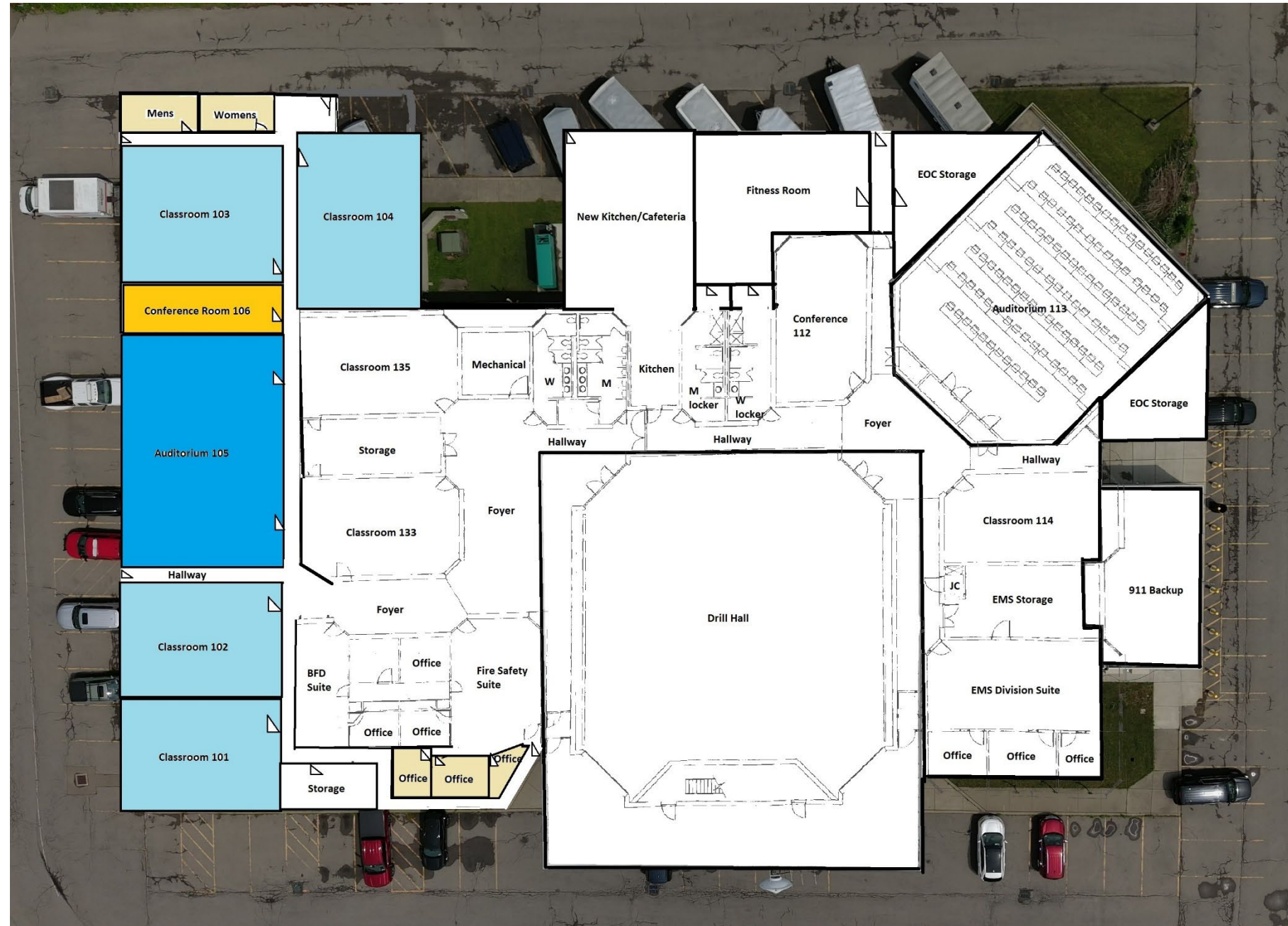




- Adding 4 new classrooms comparable in size to our existing classrooms.
- Adding a 2<sup>nd</sup> Auditorium to facilitate larger classes and meetings
- Additional Conference Room

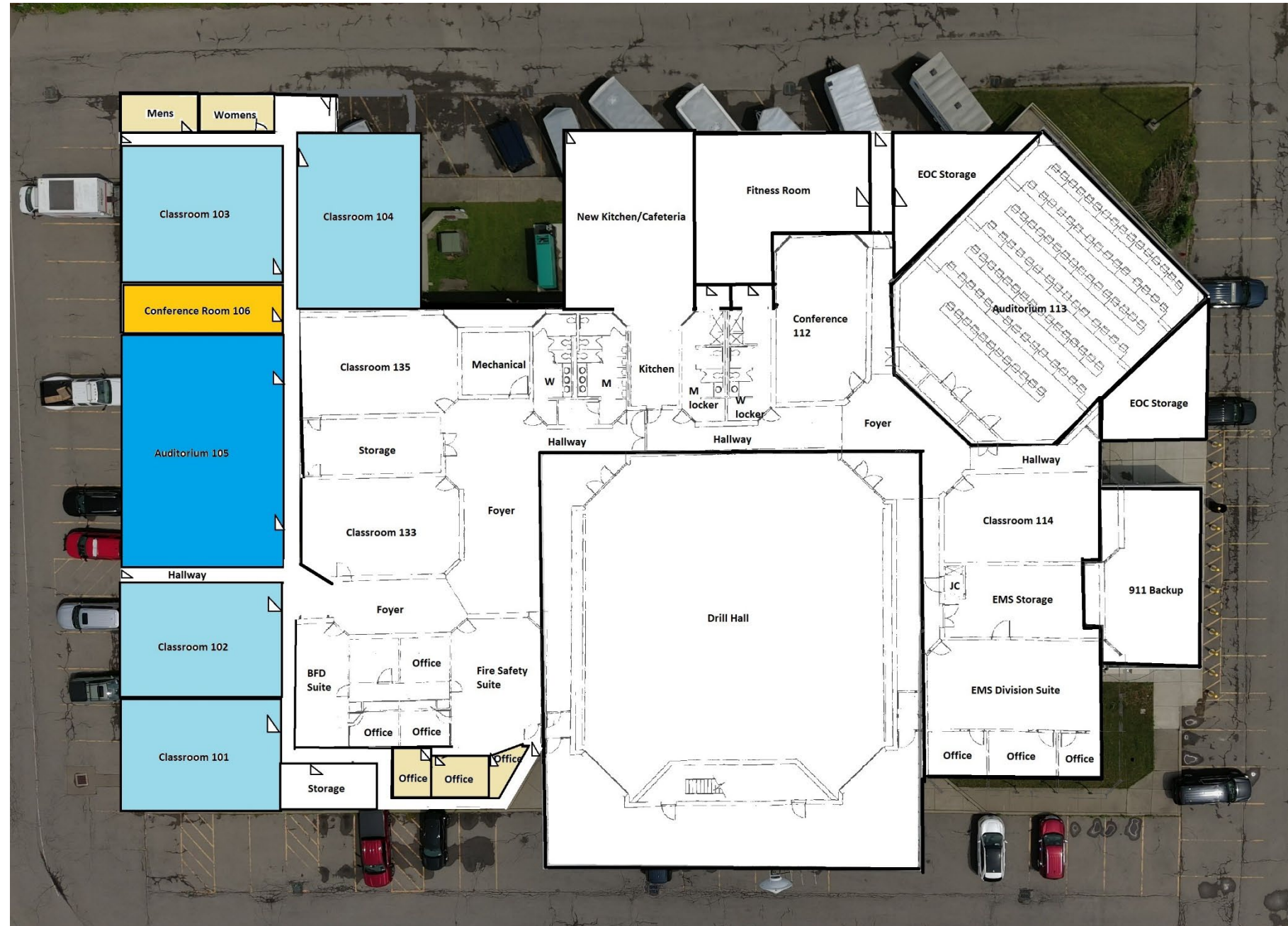


- Adding 4 new classrooms comparable in size to our existing classrooms.
- Adding a 2<sup>nd</sup> Auditorium to facilitate larger classes and meetings
- Additional Conference Room
- Additional Restrooms to accommodate increased building usage





- Adding 4 new classrooms comparable in size to our existing classrooms.
- Adding a 2<sup>nd</sup> Auditorium to facilitate larger classes and meetings
- Additional Conference Room
- Additional Restrooms to accommodate increased building usage
- Additional Office Space



- Adding 4 new classrooms comparable in size to our existing classrooms.
- Adding a 2<sup>nd</sup> Auditorium to facilitate larger classes and meetings
- Additional Conference Room
- Additional Restrooms to accommodate increased building usage
- Additional Office Space
- Small Storage room





- Adding 4 new classrooms comparable in size to our existing classrooms.
- Adding a 2<sup>nd</sup> Auditorium to facilitate larger classes and meetings
- Additional Conference Room
- Additional Restrooms to accommodate increased building usage
- Additional Office Space
- Small Storage room
- Hallways to provide access to new rooms and egress.



# Phase 1

Would add approximately  
9,733 square feet at an  
estimated cost of \$5.5  
million.





# Phase 2

- Expanding to a larger kitchen and lunch room area to accommodate EOC activations and all-day training classes.
- Adding a Fitness Room to comply with new OSHA
- Training Standards that will be coming out next year
- Extending the Locker rooms that connect to the gym area
- Storage for EOC equipment



# Phase 2

Would add approximately  
6,000 square feet at an  
estimated cost of \$3 million.





# Phase 2

Would add approximately  
6,000 square feet at an  
estimated cost of \$3 million.

Phase 1 & Phase 2  
Would create over 15,700  
square feet of new space over  
the existing footprint.





# Phase 3





# Phase 3

Remove old drafting pit now obsolete due updated firefighting pump testing and drafting techniques.

Potential liability on the property.

Wasted space is a breeding ground for mosquitoes and collection point for garbage.



# Phase 3

**Eliminate the hazard**

**Create much additional  
needed space.**

**Cost of Phase 3 would be  
approximately \$3 million for  
both the building and  
infrastructure including  
paving.**

An aerial photograph of a site. A large red rectangle is overlaid on the left side, and a large grey rectangle is overlaid on the right side. The red rectangle contains the text 'New Asset Storage & EOC Staging Building'. The grey rectangle contains the text 'Fill in and pave over to create new parking spaces'. The background shows a paved area, a grassy strip, and a building with a yellow sign.

**New Asset Storage &  
EOC Staging Building**

**Fill in and pave  
over to create new  
parking spaces**



# Erie County Department of Homeland Security & Emergency Services



**Phase 1 - \$5.5 Million**

**Phase 2 - \$3 Million**

**Phase 3 - \$3 Million**

# QR Code for PDF of ECTOC Expansion Project

