



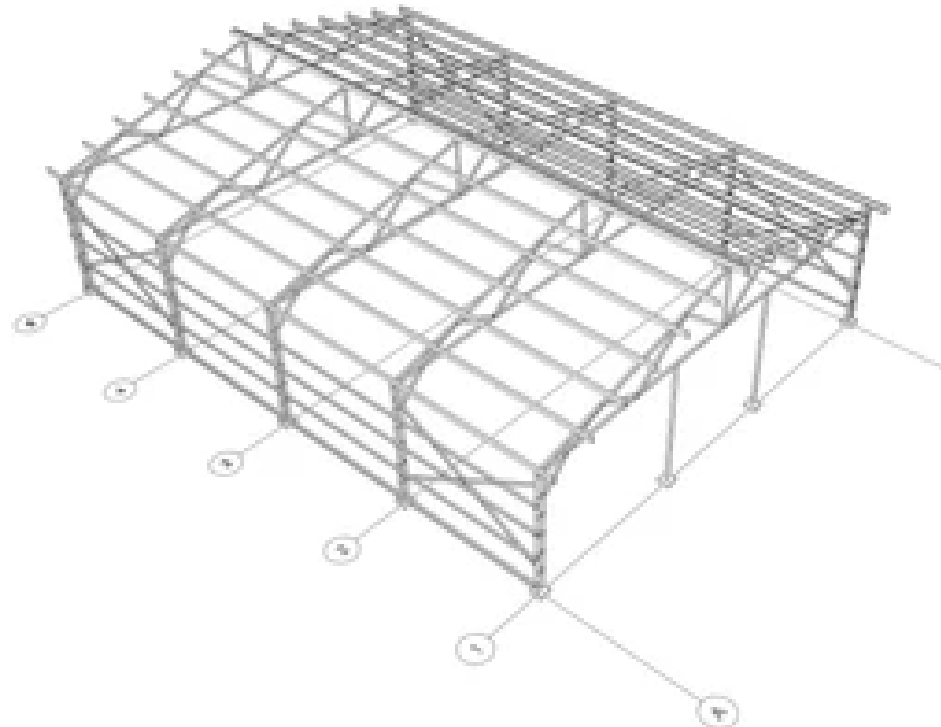
July 17th, 2025
2026 Capital Project

Sheriff's Office Multipurpose Fleet Facility

East Aurora Highway Barns
119 Ellicott Road
West Falls

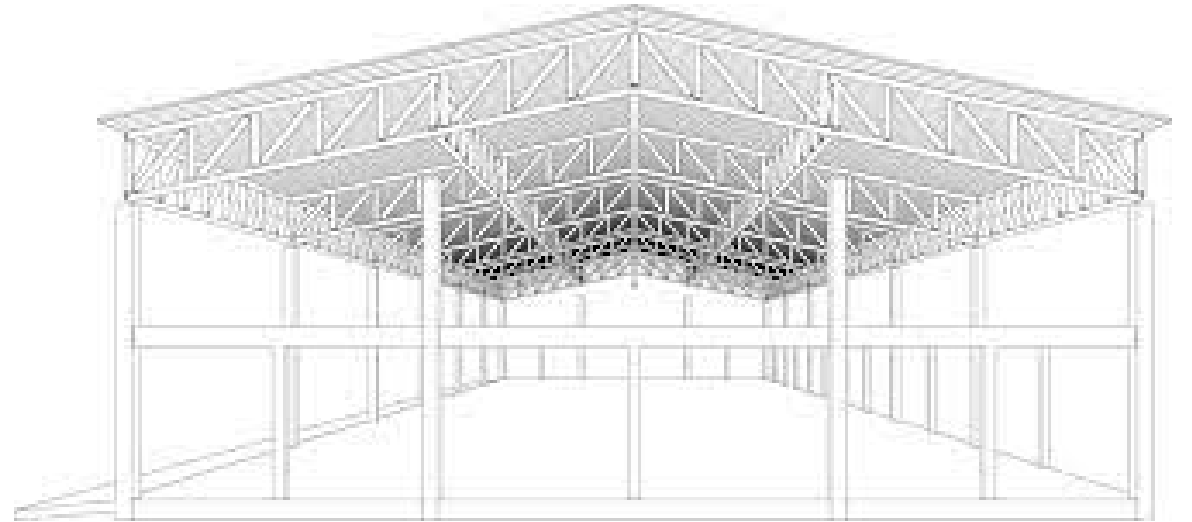


Tech Sgt. Aaron Naegely
Aaron.Naegely@erie.gov
716-238-6759



Utilization

- Fleet Operations
- Traffic C.I.U (Crash Investigation Unit)
- Jail Management Reintegration Program
- Training & Education
- Shipping & Receiving
- Storage
- Community Relations Team
- Storm Shelter / Warming Station
- Emergency Dispatch and EOC site
- Meeting & Conference Space



Fleet Operations

- Vehicle repair, service & maintenance
- Vehicle upfit, disassemble & reassemble
- Trailer services / transportation
- Impound – outdoor & indoor
- Vehicle cleaning & decontamination
- Employee education & training
- Divisional support
- Centralized management of vehicle maintenance and records

Maintenance & Collision Snapshot 2024

Tasks Including but not limited to:
Oil Changes
Tire Service (Mounting, Balance, Winter switch over, Flat Changes & Repairs)
Brake Service (Pads, Rotors, Fluids & Lines)
Battery Service
Wipers (Blades, Issues with fluid lines, Motors)
Collision Work
General Engine (Plugs, Coils, Belts, Hoses, Alternators, Cooling system)
Heating and Air Conditioning Service & Repair
Windshield Repair – Vehicle Scheduling & Repair Preparation
Suspension- (Hubs & Bearings)
Washing, Detailing, Cleaning and Decontamination
Inspections
Miscellaneous- (Bulbs, Fuses, Filters, Switches, Grease hinges, Etc.)
Vehicle Disassembling (Prep and strip for return to Enterprise/Auction)
Vehicle Delivery (Fobs, Pictures, AUTOsist info Input, Registrations)
Vehicle Movement (Empire, VSP, Dealer Pickup, Service Recalls)
Impounds (Indoor Secured CIU, Detective, DA and Narco Holds)
Vehicle Releases (Insurance adjusters, Register Owners, Property Releases)

Vehicle Disassembling and Equipment Storage Space

- To effectively disassemble vehicles and repurpose equipment, we require additional workable space and expanded storage capacity. Enhancing these resources will directly support cost-reduction efforts by allowing for the systematic removal, assessment, and reuse of key components
- We can repurpose essential equipment—such as lightbars, cages, consoles, K9 kennels, radios, computers, push bumpers, safes, seats, and storage units—to reuse on up to three vehicles. This reuse significantly reduces the need for purchasing new equipment, resulting in considerable long-term savings. However, the current limitations in space and organized storage are hindering our ability to fully capitalize on this cost-saving initiative
- Expanding our workspace and storage will streamline operations, improve inventory management, and enable more efficient equipment reuse—all of which contribute to reduced operational costs and increased sustainability

Additional Space Needed (Storage & Impound)

Storage

- Tires
- Oil & fluids
- Brakes (Pads & drums)
- Wipers
- Washer fluid
- Belts & cables
- Plugs, fuses & wiring
- Exterior parts (Bumpers, quarter panels, fenders, hoods, core supports, shutters, a-pilers, mufflers, Lowers, radiators, hubs, Rims, harnesses, Etc.)
- Equipment storage (Motorcycles, golfcarts, trailers & heavy equipment and attachments)

Secure impound & workspace

- Narco
- Investigative services
- Crime scene investigations
- Crash investigations
- Vehicle data downloads
- Vehicle related deaths
- Search warrants



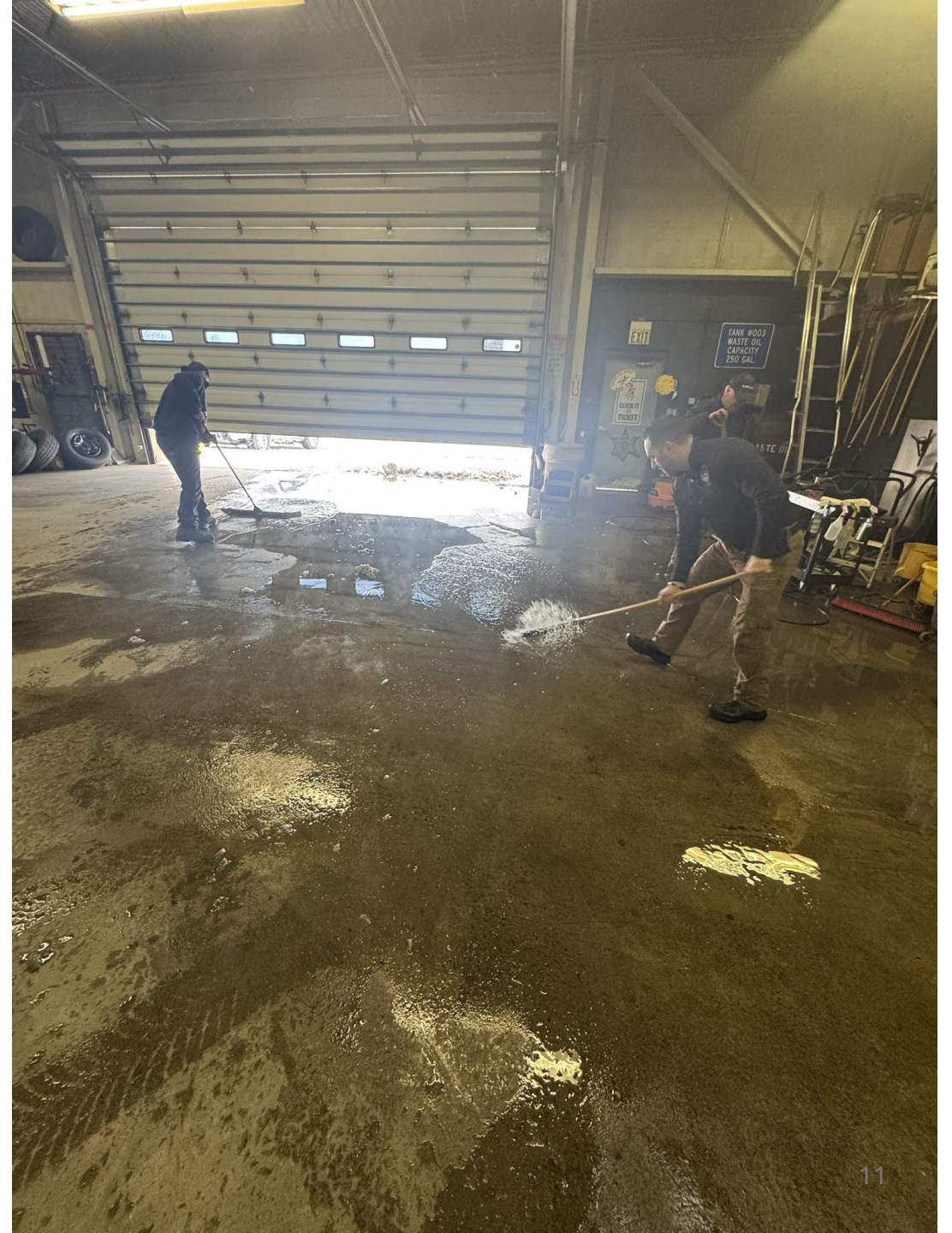


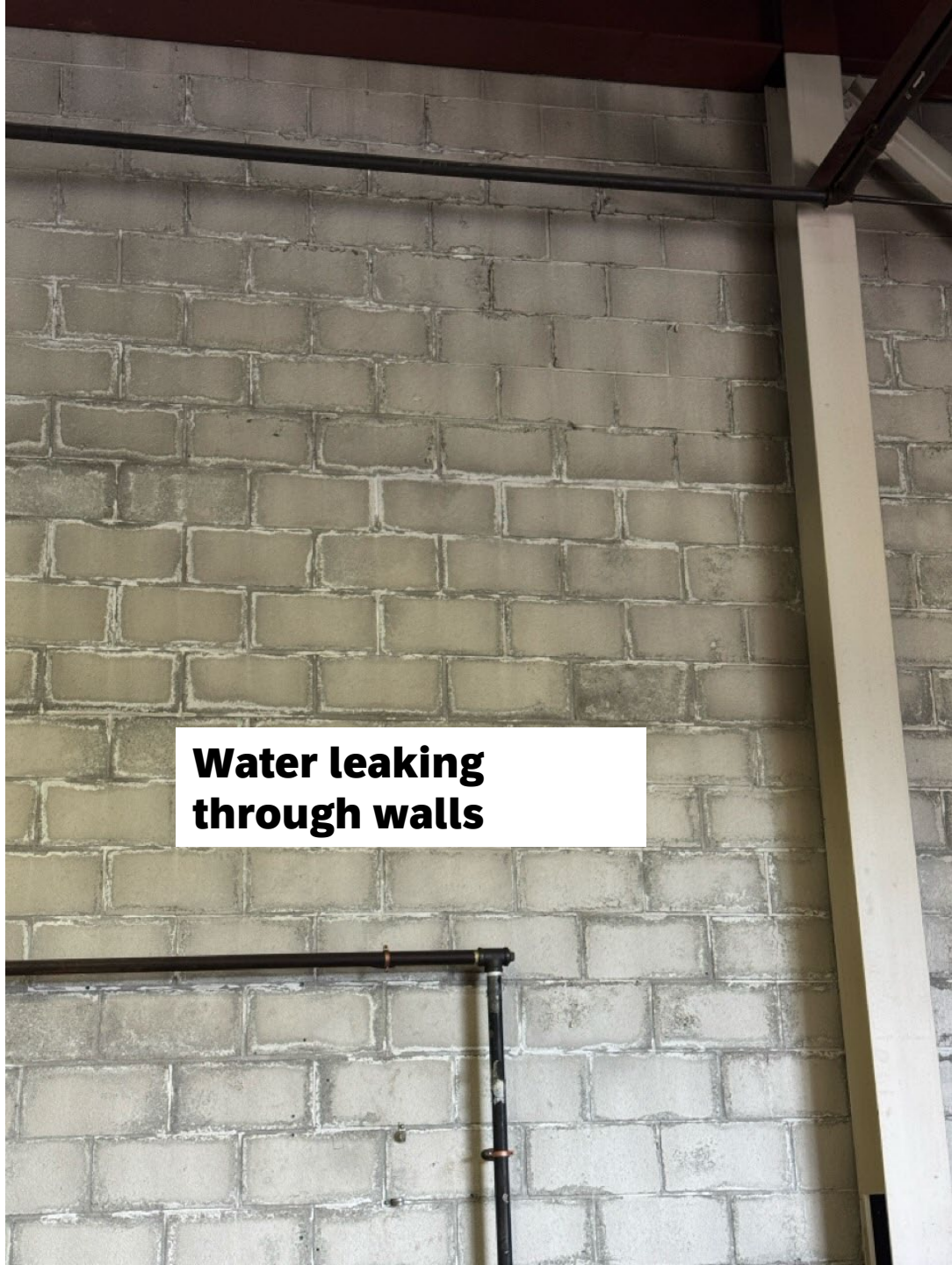


Current Facility – 11494 Walden Ave. Alden

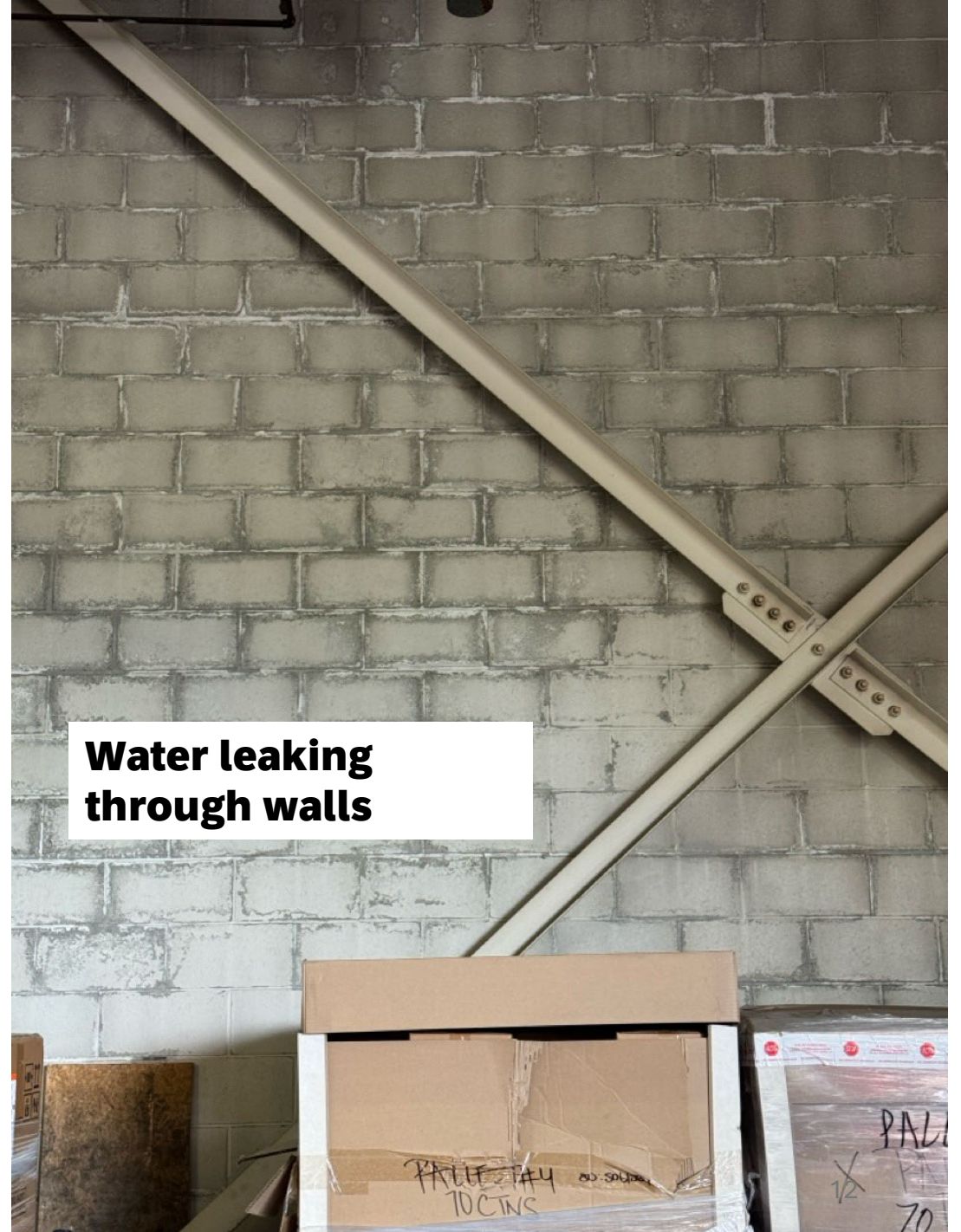
- 8,000 square feet
- Built in 1932
- Insufficient HVAC - (Over 90 degrees in summer & cold in winter)
- One bathroom (Not ADA Compliant)
- No showers or locker rooms
- No breakroom
- Roof is leaking
- Floor drains backup and flood garage
- Water leaking through walls
- Safety concerns due to workspace
- Insufficient power supply, data lines, RJ45 termination lines and internet service
- Intermittent cell phone service

**Drains backup
and flood
garage**



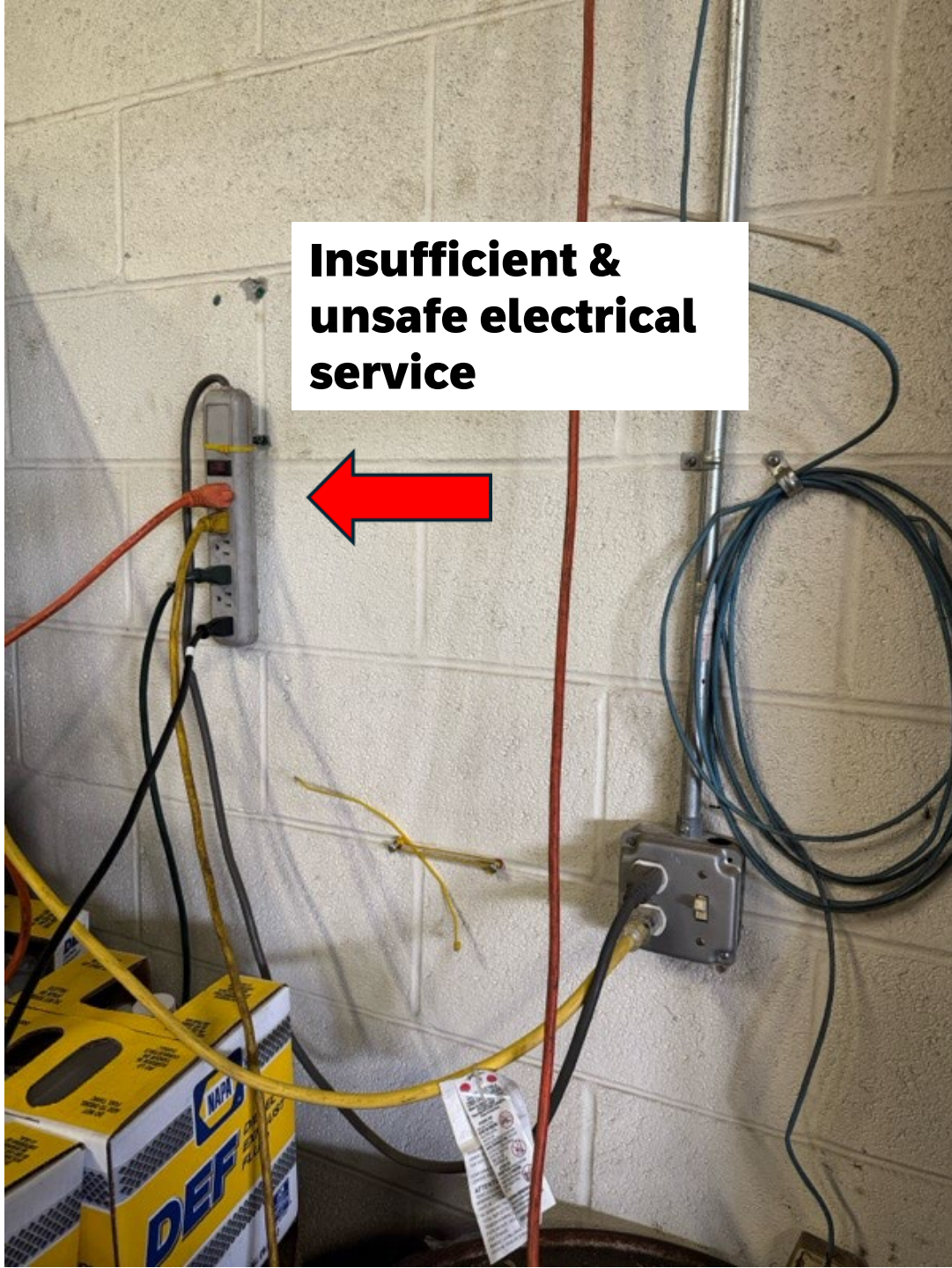


**Water leaking
through walls**

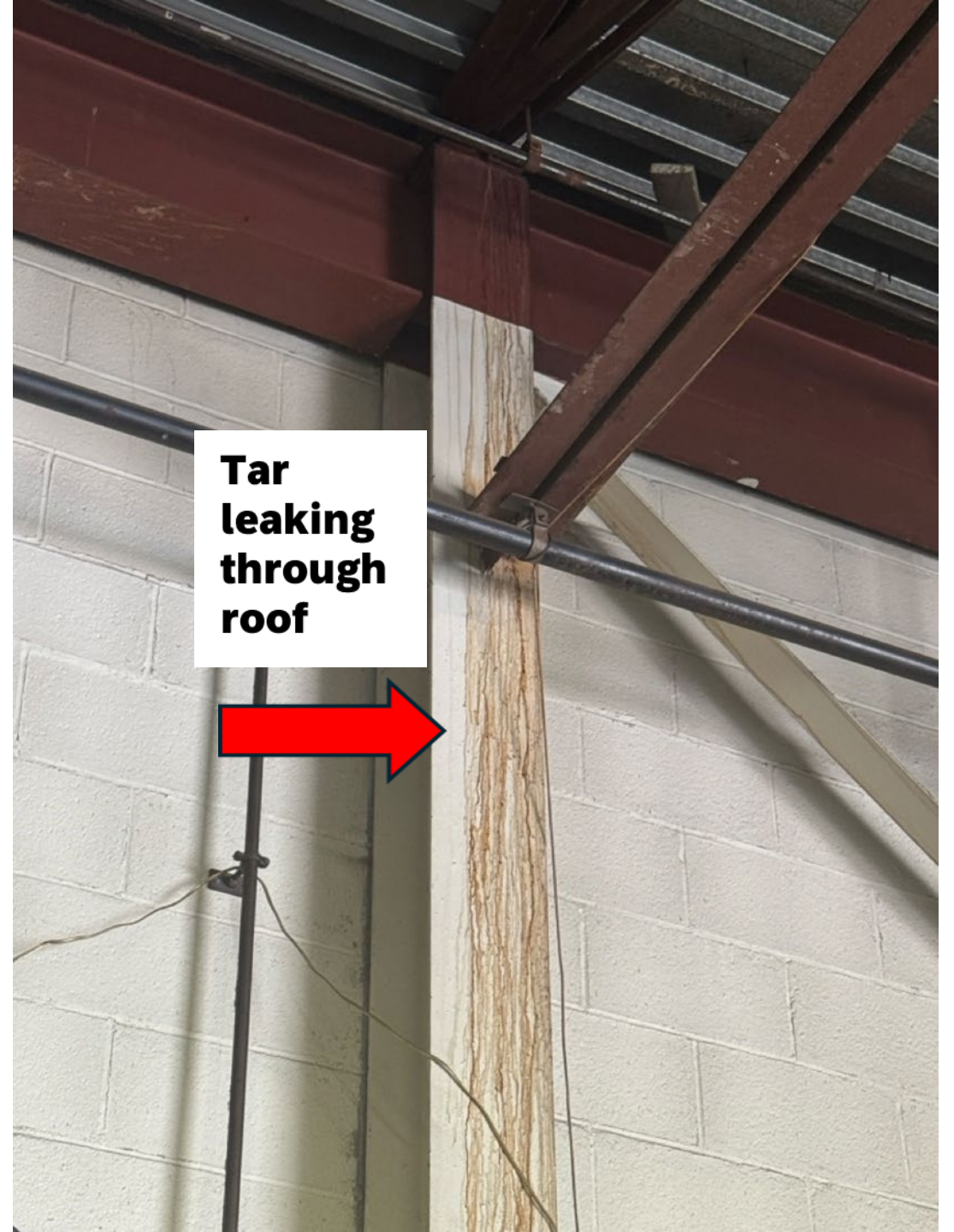
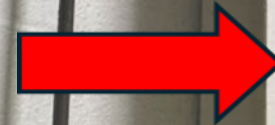


**Water leaking
through walls**

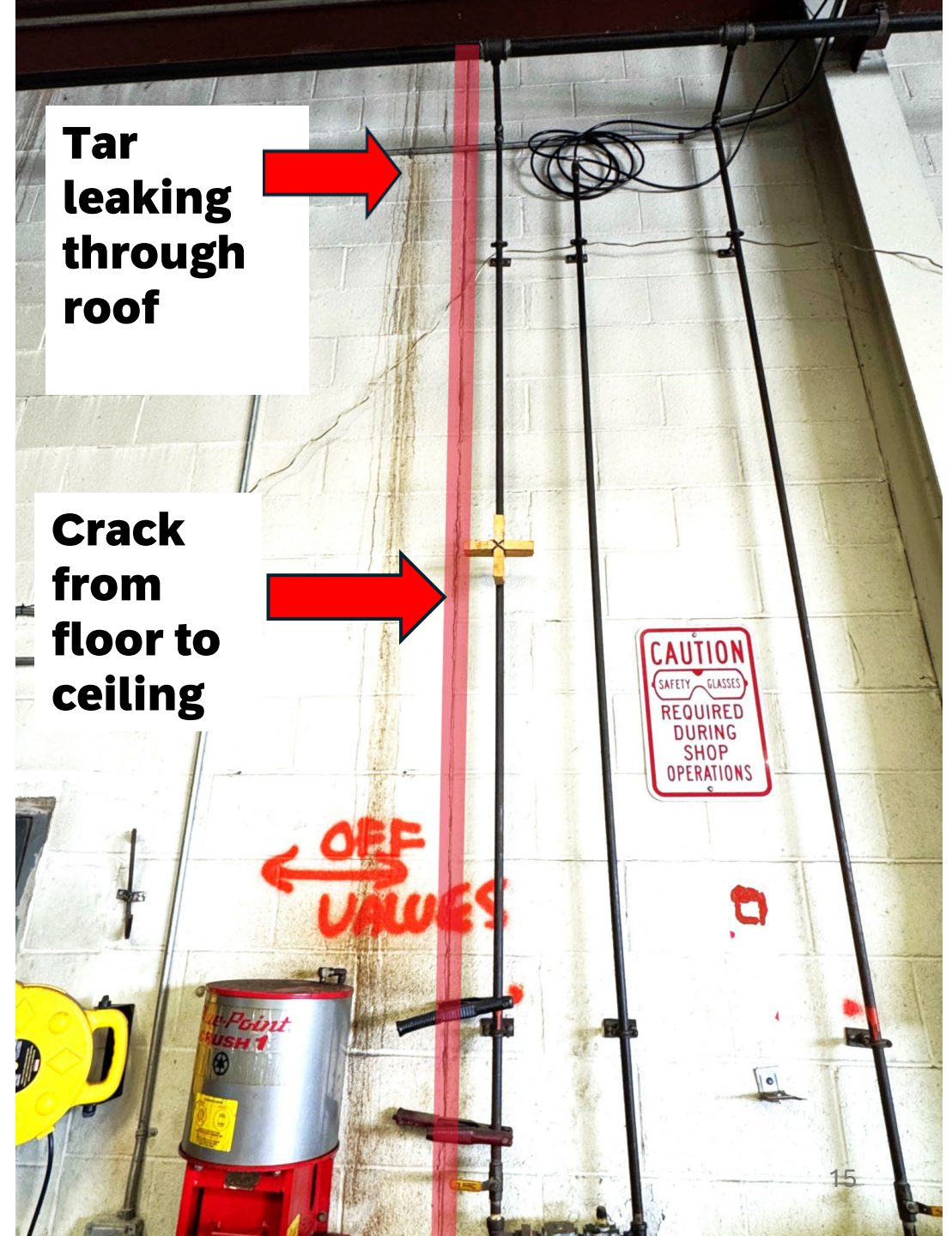
**Insufficient &
unsafe electrical
service**



**Tar
leaking
through
roof**







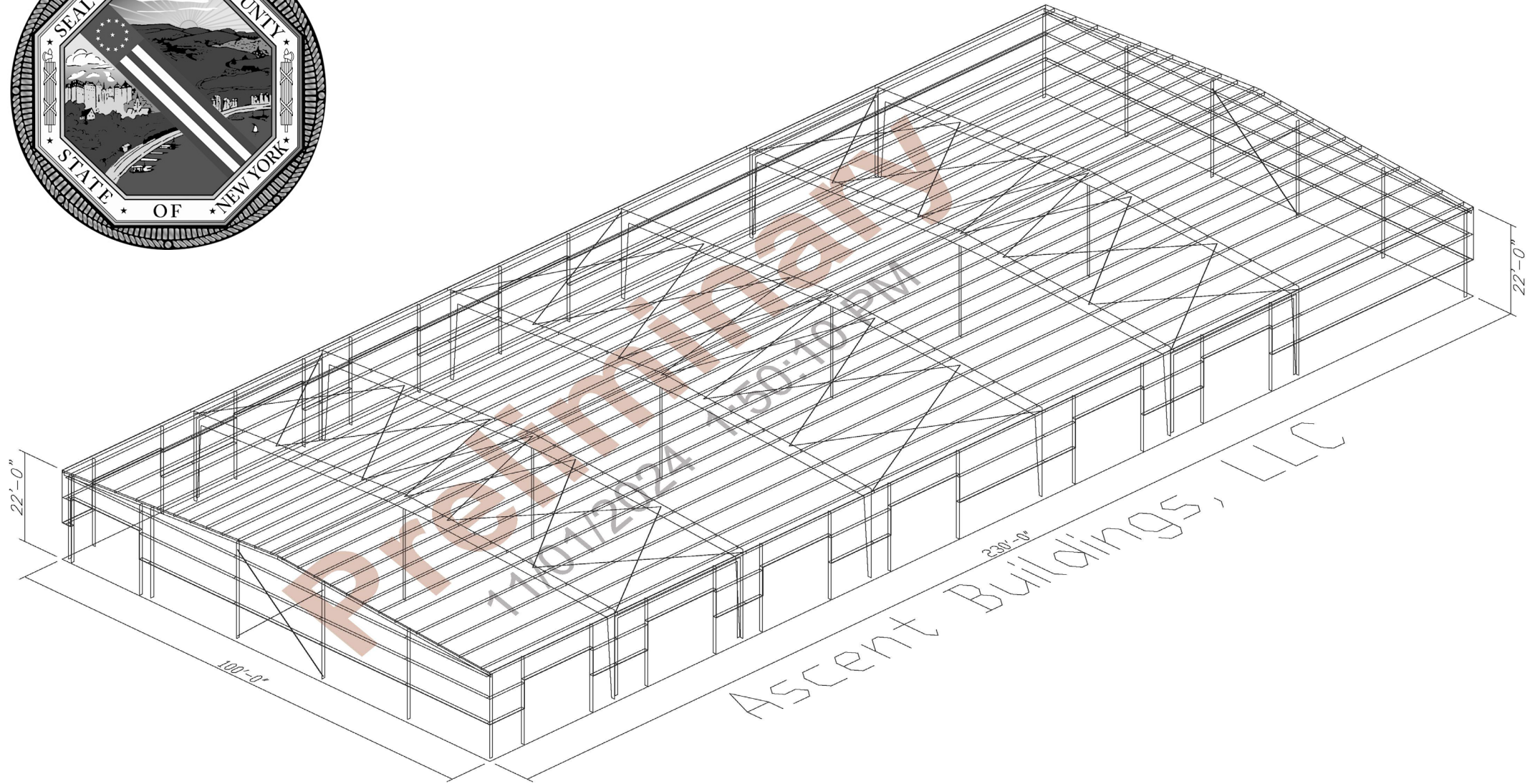


Current Facility – 11494 Walden Ave. Alden

- May 2025 roof leaked on power strip and caused an electrical fire that melted the power strip
- Lunch table is in the shop near chemicals, exhaust, dirt, and oil
- Secure indoor impound is undersized and inefficient to properly store and process vehicles involved in CSI, CIU, Detectives and Narcotics investigations. Very important in securing the chain of custody in criminal cases
- No room for storage
- No proper ventilation for vehicle exhaust
- No proper eye wash station, or shower (2 incidents this year with oil blowouts)

New Proposed Facility – 119 Ellicott Rd. West Falls

- 23,000 to 25,000 square feet
- 24-hour wash and decontamination area
- Showers and eye wash stations
- Breakroom
- Secure impound and investigation area
- Dry storage
- Classroom
- Conference room
- Emergency dispatch center or Emergency Operation Center location
- Expansion of electrical vehicle charging capabilities



Storm Shelter & Warming Station

- Close to 219 Expressway & Route 240
- Dispatch capabilities
- Kitchen
- Southern County staging area



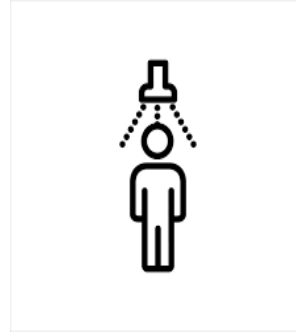
Community Outreach Events

- National Night Out
- Open House
- Child Car Seat Safety Event
- Child Safe ID



24 Hour Wash & Decontamination Area

- Keep vehicles clean
- Clear snow and ice buildup
- Decon (Bodily fluids)
- Removing bugs
- Washing clothes
- Showers



Shipping & Receiving

- Centralized shipping and receiving
- Inventory control
- Community collection events



Erie County Sheriff's Office Community Reintegration Division



- The Erie County Sheriff's Office Community Reintegration Division is committed to reducing recidivism and supporting the successful reentry of incarcerated individuals into the workforce. Through hands-on training in valuable trades such as landscaping, snow removal, auto service, equipment operation, and property maintenance, participants gain real-world experience and develop marketable skills
- To build on the success of this initiative, we are planning to expand the program with the construction of a new facility. This facility will feature dedicated classroom and training spaces to support certification programs in high-demand trades, including plumbing, electrical work, and more. By offering nationally recognized certifications and practical training, we aim to enhance employment opportunities for returning citizens and strengthen our local workforce
- West Falls location will provide space and material to educate individuals with operating equipment, trailers and moving material (Dirt, stone & debris)



Sheriff's Traffic Unit – C.I.U

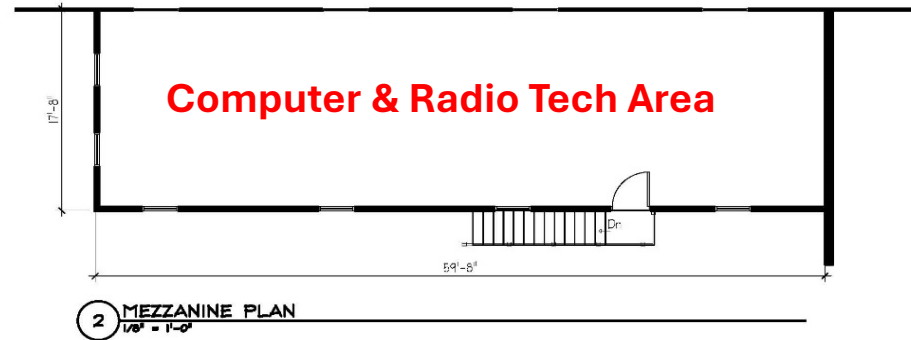
Currently Housed at 45 Elm Street Buffalo

- New Offices will be centrally located in Erie County
- Versatile meeting space for – Offenders, victims and families, interviews, investigations & to process violators
- Storage – (Crash investigation equipment, FARO reconstruction machine, radars, tox meters, stop DWI equipment, DRE equipment, Sotoxa machine, Intoxilyzer, vehicle download equipment, child passenger safety seats, school bus safety

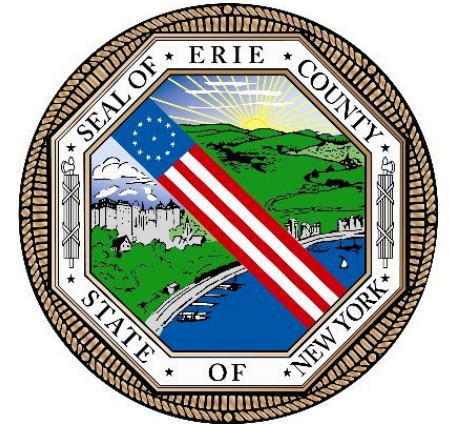


School Bus
Safety

2nd Floor Mezzanine

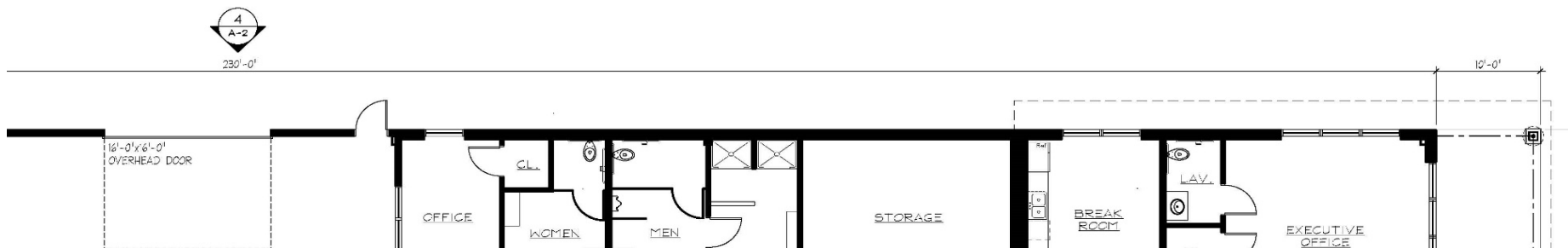


- MDTs
- Radios
- Scanners
- Radars
- Air Cards



DOCUMENT STATUS

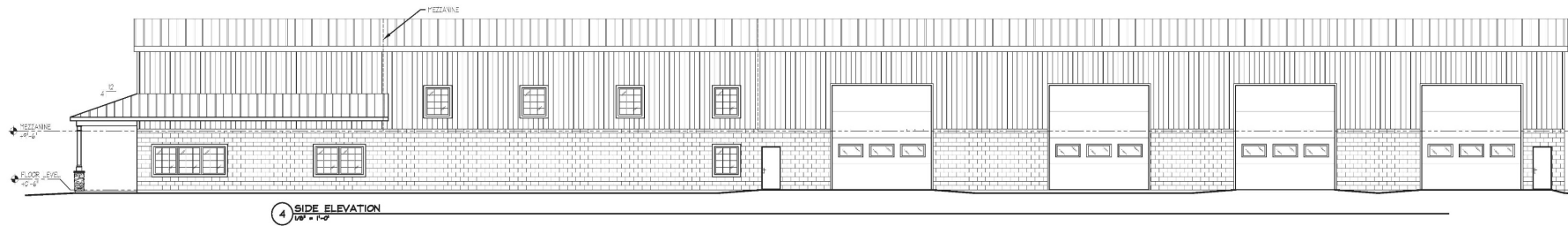
- ☒ NOT FOR CONSTRUCTION
- ☐ PROGRESS PRINT
- ☐ PRELIMINARY (APPROVAL)
- ☐ FINAL (APPROVAL)
- ☐ FINAL DISTRIBUTION



Copyright 2024 Bammel Architects PC. all rights reserved. no part of this drawing may be reproduced or copied in any form by any means without the written permission of the architect.

Any unauthorized alteration of or addition to this drawing/document is a violation of section 7307 of the New York State education law, article 147-architecture

SEAL:



6264 WEST QUAKER ST.
ORCHARD PARK, NY 14127
phone (716) 662-2482
fax (716) 662-2487

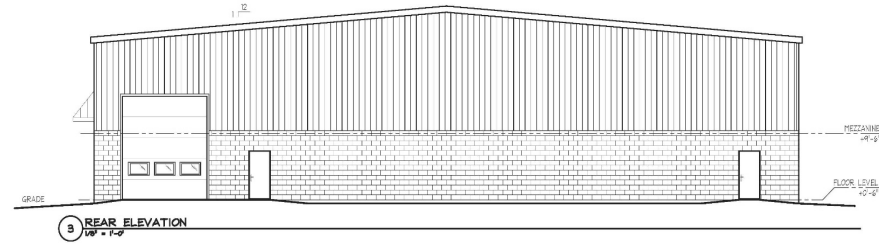
DOCUMENT STATUS

- ☒ NOT FOR CONSTRUCTION
- ☐ PROGRESS PRINT
- ☐ PRELIMINARY (APPROVAL)
- ☐ FINAL (APPROVAL)
- ☐ FINAL DISTRIBUTION

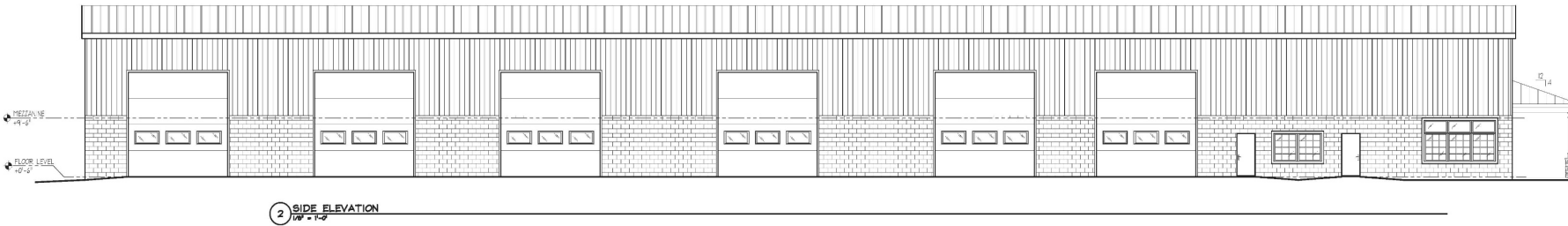
Copyright 2004 Bannell Architects PC. All rights reserved. No part of this drawing may be reproduced or used in any form or by any means without the written permission of the architect.

Any unnoted elevation or section to this drawing is a violation of section 2007 of the New York State Education Law, article 105-architecture.

SEAL:



NEW BUILDING FOR :
ERIE COUNTY
SHERIFF



ISSUE

ISSUE DATE: 10/22/24
PROJECT NUMBER: 24.218
SCALE: AS NOTED
DRAWN BY: JT
CHECKED BY: Jmm

SHEET TITLE:
ELEVATIONS

DRAWING NO:

A-2







Patrol



FCWU

CET

Narco

Sex Offense

Aviation

SWAT

EOD

CIU



Marine

Aviation

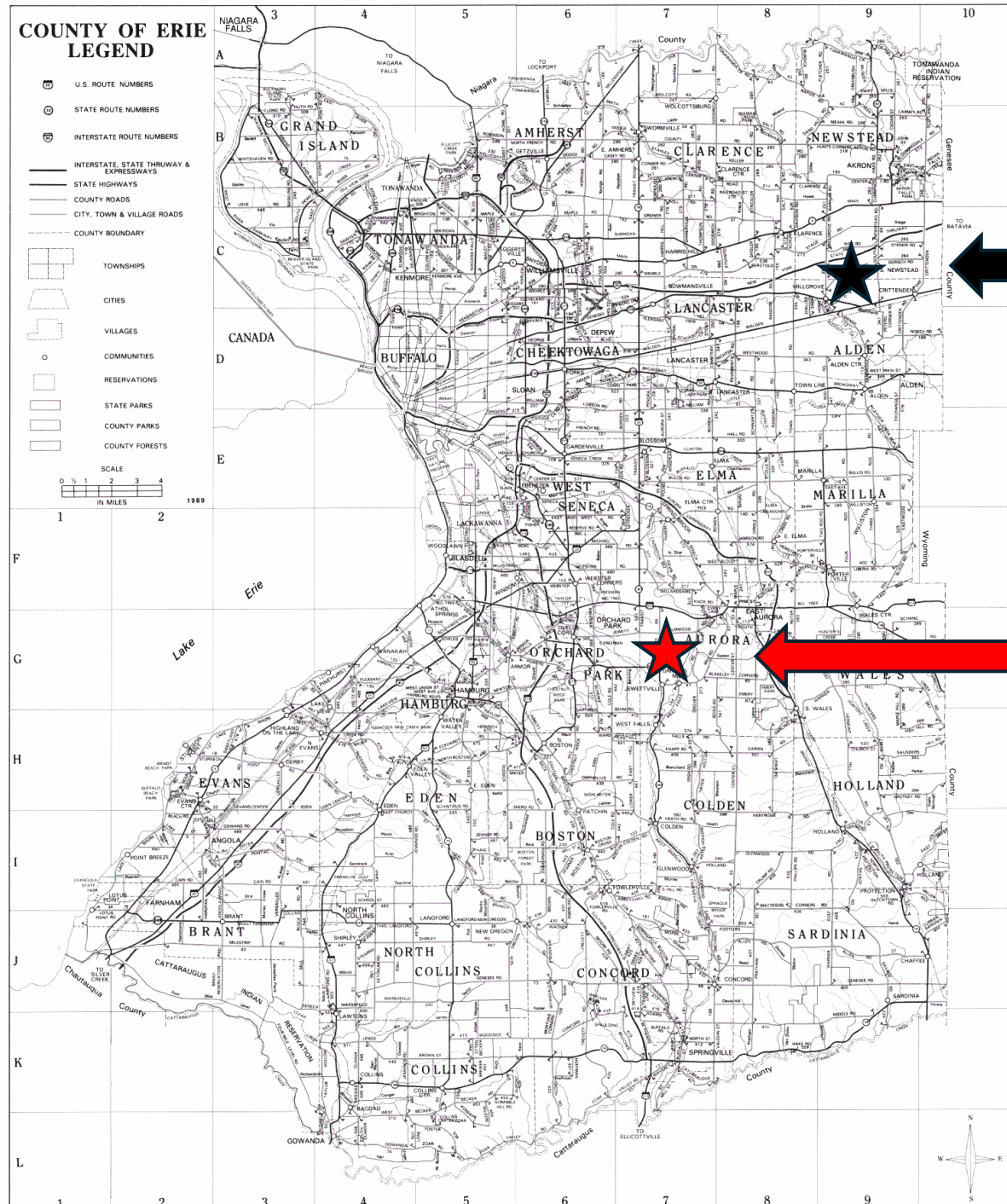
URT

COUNTY OF ERIE LEGEND

- U.S. ROUTE NUMBERS
- STATE ROUTE NUMBERS
- INTERSTATE ROUTE NUMBERS
- INTERSTATE, STATE THRUWAY & EXPRESSWAYS
- STATE HIGHWAYS
- COUNTY ROADS
- CITY, TOWN & VILLAGE ROADS
- COUNTY BOUNDARY

- TOWNSHIPS
- CITIES
- VILLAGES
- COMMUNITIES
- RESERVATIONS
- STATE PARKS
- COUNTY PARKS
- COUNTY FORESTS

SCALE
0 1 2 3 4
IN MILES
1989



**Current
Facility**

**New Facility
Centrally
located**



Erie County
Highway



Projected Cost

Option #1 – Cost to County to build the facility on County land - **\$9,000,000.00**

Option #2 – County lease to own new building *(Sale of parcel to include part of 119 Ellicott to developer)*

Lease Term	Monthly Payment	Annual Payment	Total Cost
7 Years	\$ 69,865.00	\$ 838,740.00	\$ 5,871,180.00
10 Years	\$ 53,777.00	\$ 645,324.00	\$ 6,453,240.00
15 Years	\$ 41,625.00	\$ 499,500.00	\$ 7,492,500.00

- Option to purchase building & land back for \$1.00 at the end of all terms
- 2026 projected cost \$450,000.00 in first quarter
- Projected start date Spring 2026
- Projected completion November 2026

Project Timeline & Milestones

Phase Duration – 37 Weeks

- Mobilization & Site Prep 2 weeks
- Fabrication & Delivery 16 weeks
- Erection & Enclosure 8 weeks
- MEP Rough-In & Finishes 10 weeks
- Final Inspection & Handover 1 week

Thank you