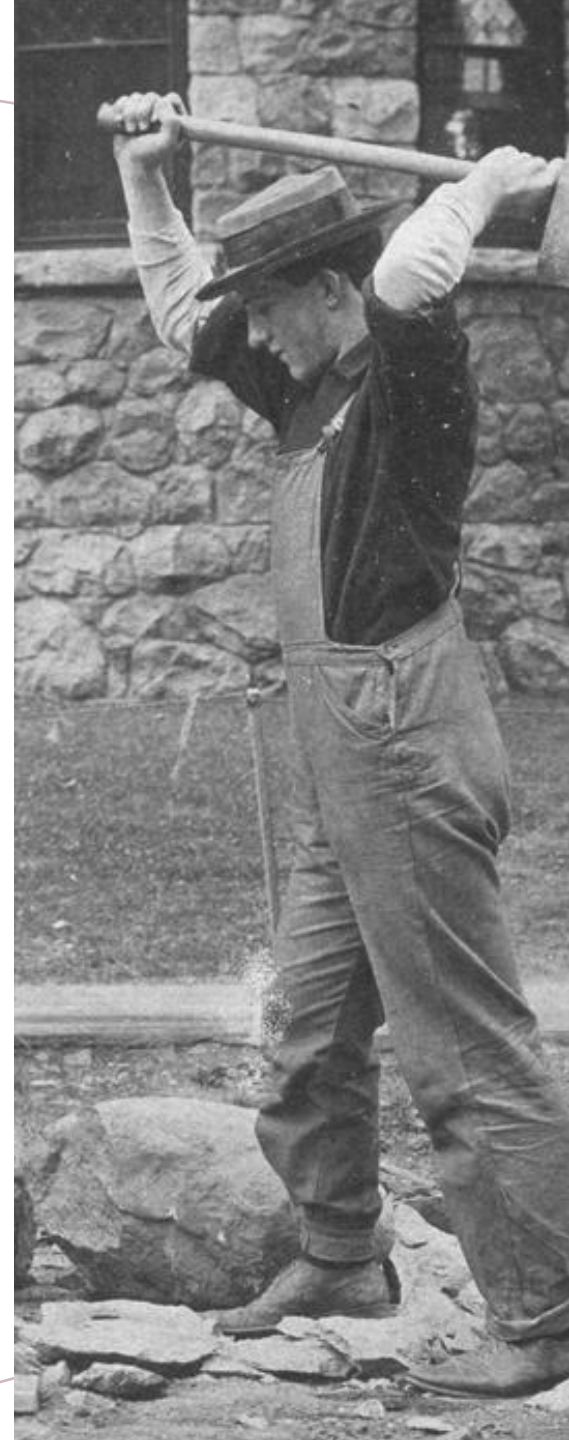




PRINT SHOP FIRST FLOOR TOWER RESTORATION 2025



THE HISTORIC PRINT SHOP WAS BUILT IN 1901
AND CONSTRUCTED OF LOCAL FIELD STONE. IT
IS THE LARGEST STRUCTURE ON THE CAMPUS
AND HOUSES THE ROYCROFT CAMPUS
MUSEUM, PRESS ROOM, JERRY AND BARBARA
CASTIGLIA ART CENTER AND THE NEWLY
RESTORED 3RD AND 4TH FLOOR TOWER.



OUR GOAL IS TO RESTORE THE HISTORIC PRINT SHOP TO ITS FORMER GLORY, CREATING AN UNFORGETTABLE GUEST EXPERIENCE WHILE UTILIZING THE SPACE TO CONTINUE THE ROYCROFT CAMPUS PRINTING LEGACY.



FIRST FLOOR TOWER RESTORATION PROJECT



SCOPE OF PROJECT

EXTERIOR EAST VIEW





*LOWER-LEVEL EAST
WINDOW REPAIR
AND RESTORATION*

*ORIGINAL 1901 PICTURED
SOUTH-EAST WINDOW*

*LOWER-LEVEL EAST
WINDOW REPAIR
AND RESTORATION*

*ORIGINAL 1901 PICTURED
NORTH-EAST WINDOW*





*NORTH VIEW
LOWER-LEVEL
WINDOW*



*RESTORED WINDOW
WITH STORM
NYSCA FUNDED RESTORATION OF 12
WINDOWS IN 2023*

DOOR AND CASEMENT RESTORATION

THE CAMPUS IS FORTUNATE TO HAVE BOTH ORIGINAL NORTH AND EAST PRINT SHOP DOORS.

THE NORTH DOOR WILL BE RESTORED WITH A NEW STORM DOOR ADDED TO HELP PROTECT THE ORIGINAL FROM THE HARSH WESTERN NEW YORK CLIMATE.

RESTORATION WILL INCLUDE RE-LAMINATING OF ORIGINAL DOOR AND RECONSTRUCTION OF CASEMENT.

ORIGINAL NORTH DOOR PICTURED



NORTH DOOR AND CASEMENT RESTORATION



RECONSTRUCTION OF ORIGINAL EAST DOOR

THE PRINT SHOP EAST DOOR WAS REMOVED IN 1950 AND RELOCATED TO THE SECOND FLOOR OF THE PRINT SHOP.

UNFORTUNATELY, THE DOOR WAS CUT DOWN IN SIZE AND REHUNG IN REVERSE SWING. ORIGINAL HARDWARE WAS REMOVED.

A NEW DOOR WILL BE CONSTRUCTED, AND A STORM DOOR WILL BE ADDED TO PROTECT THE DOOR.

ORIGINAL EAST DOOR PICTURED



RECONSTRUCTION OF NORTH AND EAST EXTERIOR LIGHTS

THE PRINT SHOP HAD TWO HAND-BUILT CAST
IRON LIGHTS HANGING OUTSIDE THE TOWER
OVER THE NORTH AND EAST DOOR.

WE WERE ABLE TO LOCATE ONE OF THE
ORIGINAL FIXTURES IN THE BASEMENT OF THE
TOWER AND USE IT AS A MODEL FOR THE
RECONSTRUCTION OF BOTH LIGHTS





*ARCHIVAL
IMAGE OF
ORIGINAL EAST
DOOR LIGHT*

*ORIGINAL
NORTH DOOR
EXTERIOR
FIXTURE*





RESTORATION OF INTERIOR

REMOVAL OF RESTROOM WALLS INSTALLED IN 1950

REMOVAL OF LAMINATED FLOOR

RESTORATION OF ORIGINAL WOODEN FLOOR

RESTORATION OF LATH AND PLASTER CEILING

RESTORATION OF CROWN MOLDINGS

*REMOVAL OF
1950 RESTROOM
FAÇADE
AND RESTORE
CROWN
MOLDING*



*WHAT IMPACT DOES ERIE
COUNTY'S INVESTMENT HAVE ON
THE ROYCROFT CAMPUS...*



Studio in Art Field Trip to Roycroft Campus



*WE CONTINUE
TO PARTNER
WITH SCHOOLS*



*THE CAMPUS DRIVES
ECONOMIC DEVELOPMENT
IN EAST AURORA AND
WESTERN NEW YORK.*



*WE CONTINUE TO SHARE THIS
NATIONAL HISTORIC
LANDMARK FOR GENERATIONS
TO COME.*



THANK YOU

CURT MARANTO

EXECUTIVE DIRECTOR

CMARANTO@ROYCROFTCAMPUSCORP.COM

716-208-0052

