



SpectrumHealth

& Human Services



Leadership Team

Nick Jerome

- Sr. Vice President Finance/CFO
- Extensive experience in managing finances in the construction industry
- Overseeing emergency operations of the Downtown Buffalo Counseling Center rebuild



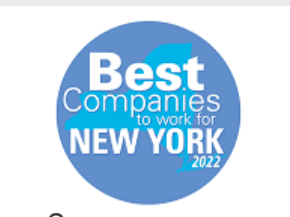
Melissa Farrell, MS, LMHC

- Chief Operating Officer
- Expert in program development and integrating behavioral health services into primary care offices
- Helped secure CCBHC designation for counseling centers in 2017 and 2022



Founded in 1973, Spectrum Health and Human Services' **Mission** is to respectfully partner with adults, children, and families as they recover from behavioral, emotional, mental health, and/or substance abuse-related disorders; and to promote hope, empowerment and self-defined improvements in their quality of life.

- **Counseling Centers** in Erie and Wyoming counties
- **Community Based and Outreach Services**
- Erie County's **first Urgent Care** for behavioral health
- 24/7 access to **Crisis Counseling** for adults and youth
- Agency provider for **Buffalo H.O.P.E. COMHPS**





OUR SERVICES

Mental Health and Addiction Services

- Certified Community Behavioral Health Clinics (CCBHC):
 - Addiction Counseling
 - **Mental Health Counseling**
- School Based Mental Health Clinics
 - Williamsville
 - Lancaster
- Medication Assisted Treatment (MAT)
- East Buffalo Rapid Access Center



Crisis Response Services

- After Hours Care
 - 24/7 Helpline: (716) 710-5172
 - Wyoming County Crisis line: (585) 283-5200
- Crisis and Re-stabilization Emergency Services (C.A.R.E.S.)
 - (716) 882-HELP (4357)



Community Services

- Assertive Community Treatment Program (ACT)
- Health Home Care Coordination
- Housing Services
- **Peer Services**
- Re-entry Services
- Vocational Services
- Spectrum Health Buffalo H.O.P.E. COMHPS
- Wyoming County Jail Services





URBAN CHRISTIAN MINISTRIES ENGAGEMENT



Community events build camaraderie and demonstrate our values and mission.





1280 MAIN ST.

Services at 1280 Main St.



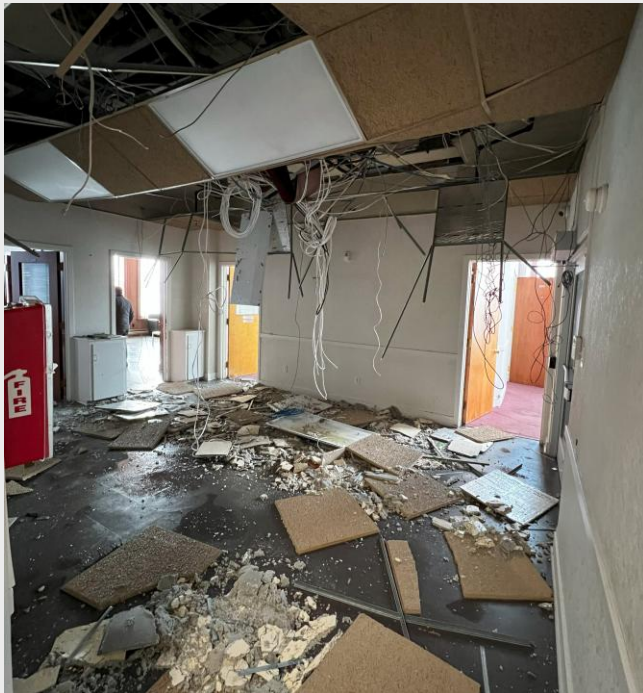
- Crisis Management Services
- Addictions Services
- Mental Health Services
- Reentry Programming
- Supportive Housing Services
- Rapid Access MAT and Addiction Services



1280 Main St.

- 120-year-old, 3-story former Otis Elevator headquarters Building has been Spectrum Health's primary treatment center since 2015.
- Employs more than 125 staff, with the majority residing in the City of Buffalo
- Serves 2.5k patients in the City of Buffalo, with 2k directly treated at this hub





Once-in-a-Lifetime Storm

- On Dec. 24, 2022, 1280 Main St. faced catastrophic damage caused by the Blizzard.
- Wind gusts and cold temperatures shattered a third-floor window, leading to a sprinkler malfunction that released approximately 139,000 gallons of water over 48 hours.
- This resulted in the entire structure being rendered extremely unsafe due to indoor air quality concerns associated with mold and other severe damage.
- Spectrum Health relocated all services from 1280 and its 125 employees now operate from alternate regional locations.



Re-Building 1280

- Spectrum aims to rehabilitate its service hub with an estimated \$17.9 million rehabilitation and expansion at 1280 Main Street.
- While demolition was an option, Spectrum Health leadership instead has decided to add to 1280 Main Street's history by embarking on a remediation and re-building process.
- Phase 1- Remediation: Cost = 1.1 million
- Phase 2- Re-Building: Cost = 11.3 million
 - *Current phase*
- Phase 3 & Beyond: Cost = 3.6 million

Funding

- Secured:
 - \$5 million in insurance recovery
 - \$4 million from CREST Funding & \$200K from Patrick P Lee Foundation for the projected \$17.9 million renovation at 1280 Main St.
- Highlighting a funding gap of approximately \$9.3 million to be sourced elsewhere.
- Request for potential funding from Erie County.



SpectrumHealth

& Human Services

www.shswny.org