



**Erie County  
Department of  
Health**



**Public Health**  
Prevent. Promote. Protect.

## COVID-19 Data Update

Week ending August 6, 2022

All data are provisional.

1,261 new COVID-19 cases were recorded for the week ending August 6, 2022. This is a 9% decrease from the previous week's total (1,391 cases). These data do not include at-home tests. The weekly COVID-19 positivity rate was 11.9%, a slight decrease from the previous week's COVID-19 positivity rate of 12.5%.

Overall reported COVID-19 diagnostic tests decreased slightly to 10,636 from 11,094 tests during the previous week.

7-day case rate per 100,000 persons was 132.1, down from 145.8 the previous week. Erie County remains at a low COVID-19 Community Level per CDC indicators.

Buffalo city COVID-19 cases comprised 29.2% of new COVID-19 cases this past week. (Buffalo city population is 29.2% of all Erie County residents).

Erie County COVID-19 Hospitalization Data: See Figures 4a and 4b. NYSDOH publishes updated hospitalization data by region at <https://coronavirus.health.ny.gov/daily-hospitalization-summary>.

Erie County COVID-19 Vaccination Data: See Section 2. NYSDOH updates vaccine data daily. Demographic data: <https://coronavirus.health.ny.gov/demographic-vaccination-data>.

Erie County COVID-19 Mortality Data: Mortality data are updated through July 26, 2022 based on data available to ECDOH. More recent data will be reported when available. NYSDOH reports COVID-19 mortality data at <https://coronavirus.health.ny.gov/fatalities-0>. See Section 3.

### CONTENTS

#### **Section 1: COVID-19 Case Data**

Figure 1: Confirmed COVID-19 Cases by Age Group & Gender (to date)	Page 1
Figure 2: Confirmed COVID-19 Cases by Age Group and Gender (latest week)	Page 1
Table 1: New COVID-19 Cases in the Past Seven Days	Page 1
Table 2: Confirmed COVID-19 Cases by ZIP Code	Page 2
Figure 3: Erie County COVID-19 Wastewater Surveillance	Page 4
Figures 4a and 4b: Erie County COVID-19 Hospitalizations	Page 5

#### **Section 2: COVID-19 Vaccination Data**

Table 3: Erie County COVID-19 Vaccination Rates by Age and ZIP Code	Page 6
---	--------

#### **Section 3: COVID-19 Mortality Data**

Tables 4 & 5: Erie County COVID-19 Deaths By Age Group	Page 8
Table 6: Erie County COVID-19 Deaths by Residence	Page 8

## Section 1: Confirmed COVID-19 Cases

Figure 1

**Confirmed COVID-19 Cases by Age Group and Gender (March 2020-present)**

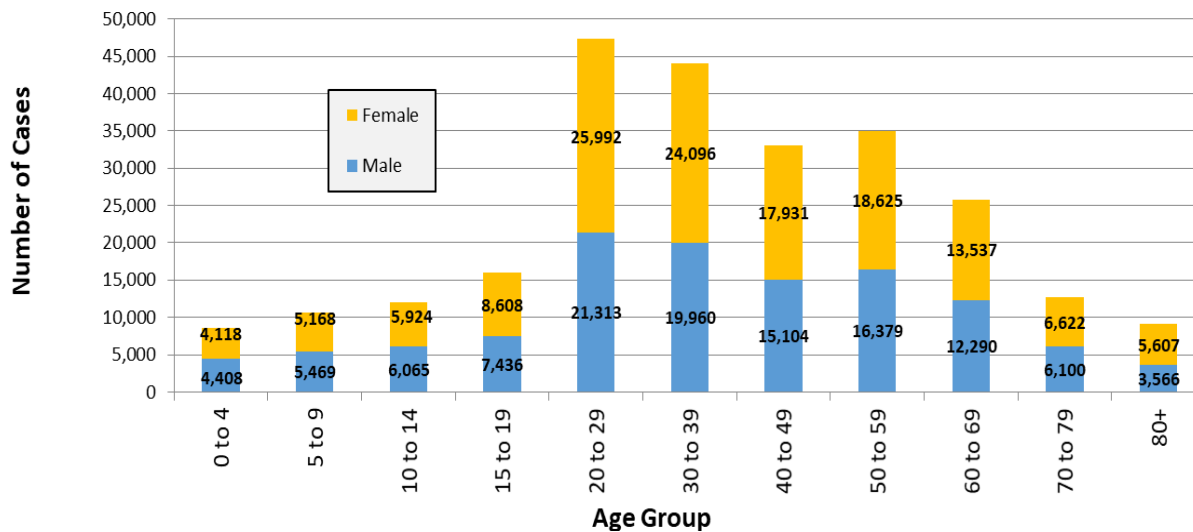


Figure 2

**Confirmed COVID-19 Cases by Age Group (July 31-August 6, 2022)**

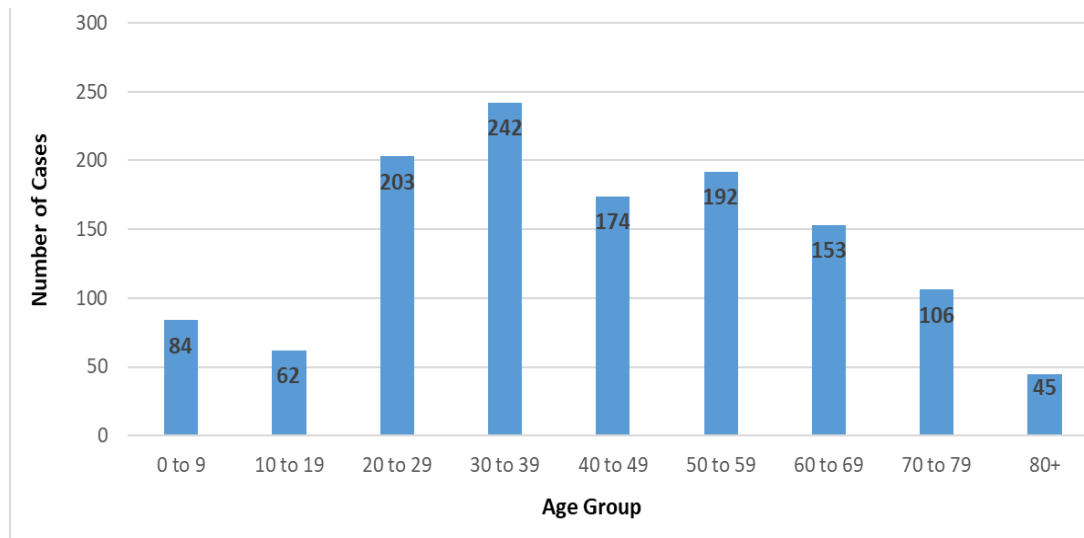


Table 1

**New Cases in Past Seven Days, Past Six Weeks**

Week Ending	New Cases in Past 7 Days	Total New Cases in the Past Seven Days per 100,000 Persons*
7/2/2022	902	94.5
7/9/2022	978	102.5
7/16/2022	1,181	123.8
7/23/2022	1,399	146.6
7/30/2022	1,391	145.8
8/6/2022	1,261	132.1

This metric shows trends over time.  
\*Population Source: 2020 U.S. Census Bureau

Table 2

**Confirmed COVID-19 Cases by ZIP Code**

ZIP Code	City	Cases	Zip Code Population**	New Daily Cases per 100,000 Persons on 7-Day Rolling Average <sup>1</sup>	Total New Cases per 100,000 Persons in the Past 7 Days <sup>2</sup>
14221	Amherst/Williamsville/Clarence	92	53,555	24.5	171.8
14075	Hamburg	73	41,937	24.9	174.1
14150	Tonawanda	63	41,676	21.6	151.2
14225	Cheektowaga	55	33,385	23.5	164.7
14224	West Seneca	52	39,889	18.6	130.4
14220	Buffalo (South)	47	24,227	27.7	194.0
14226	Amherst (Snyder/Eggertsville)	47	29,267	22.9	160.6
14215	Buffalo (East)	45	39,999	16.1	112.5
14127	Orchard Park	41	29,961	19.5	136.8
14086	Lancaster	40	31,847	17.9	125.6
14217	Kenmore	38	23,480	23.1	161.8
14223	Tonawanda	38	22,665	24.0	167.7
14218	Lackawanna	35	19,039	26.3	183.8
14228	Amherst (Getzville)	35	20,857	24.0	167.8
14043	Depew	34	24,742	19.6	137.4
14227	Cheektowaga	34	23,426	20.7	145.1
14207	Buffalo (Black Rock/Riverside)	32	23,552	19.4	135.9
14216	Buffalo (North)	29	22,431	18.5	129.3
14211	Buffalo/Cheektowaga	28	22,611	17.7	123.8
14206	Buffalo (Kaisertown)	27	20,751	18.6	130.1
14051	Amherst (East)	25	19,533	18.3	128.0
14213	Buffalo (West Side)	23	24,465	13.4	94.0
14214	Buffalo (University)	22	19,775	15.9	111.3
14072	Grand Island	21	20,374	14.7	103.1
14031	Clarence	19	9,392	28.9	202.3
14208	Buffalo (east)	19	11,125	24.4	170.8
14202	Buffalo (Downtown)	18	3,911	65.7	460.2
14006	Angola	16	9,858	23.2	162.3
14052	Aurora	15	17,329	12.4	86.6
14068	Amherst (Getzville)	15	7,150	30.0	209.8
14070	Gowanda	12	6,732	x	x
14219	Blasdell	12	11,536	x	x
14222	Buffalo (Elmwood Village)	12	14,046	x	x
14081	Irving	11	3,095	x	x
14204	Buffalo (East)	11	8,691	x	x
14004	Alden	9	12,704	x	x
14047	Derby	9	6,440	x	x
14057	Eden	9	8,116	x	x
14059	Elma	9	8,933	x	x
14201	Buffalo (Downtown)	9	11,549	x	x

All data are provisional and represent data available at the time of the report.

14210	Buffalo (South)	9	14,694	x	x
14209	Buffalo (Delaware)	7	7,926	x	x
14085	Hamburg (Lake View)	6	7,353	x	x
14139	Wales	6	2,125	x	x
14141	Springville	6	7,728	x	x
14170	West Falls	6	2,286	x	x
14032	Clarence (North)	5	7,989	x	x
14212	Buffalo (Broadway)/Sloan	5	10,641	x	x
14001	Akron	*	9,464	x	x
14025	Boston	*	3,039	x	x
14026	Bowmansville	*	674	x	x
14030	Chaffee	*	1,807	x	x
14033	Colden	*	2,219	x	x
14034	Collins	*	2,742	x	x
14055	East Concord	*	1,405	x	x
14069	Glenwood	*	844	x	x
14080	Holland	*	4,330	x	x
14091	Lawtons	*	1,079	x	x
14102	Marilla	*	1,281	x	x
14111	North Collins	*	3,352	x	x
14203	Buffalo	*	1,618	x	x
14231	Buffalo	*	n/a	x	x
14260-1426	Amherst (UB)	*	10,300	x	x
	<b>All Erie County<sup>†</sup></b>	<b>1,261</b>	<b>954,236</b>	<b>18.9</b>	<b>132.1</b>

*\*\*Population Source: ZIP code data from U.S. Census Bureau, DP-1, General Population & Housing Characteristics*

*ZCTAs are an approximation of mailing ZIP codes*

*Buffalo and Erie County from 2010 (U.S. Census Redistricting Data, PL 94-171) Summary File*

<sup>1</sup> *Calculated by dividing total cases in past 7 days by 7, then dividing by ZIP code pop. & multiplying by 100,000*

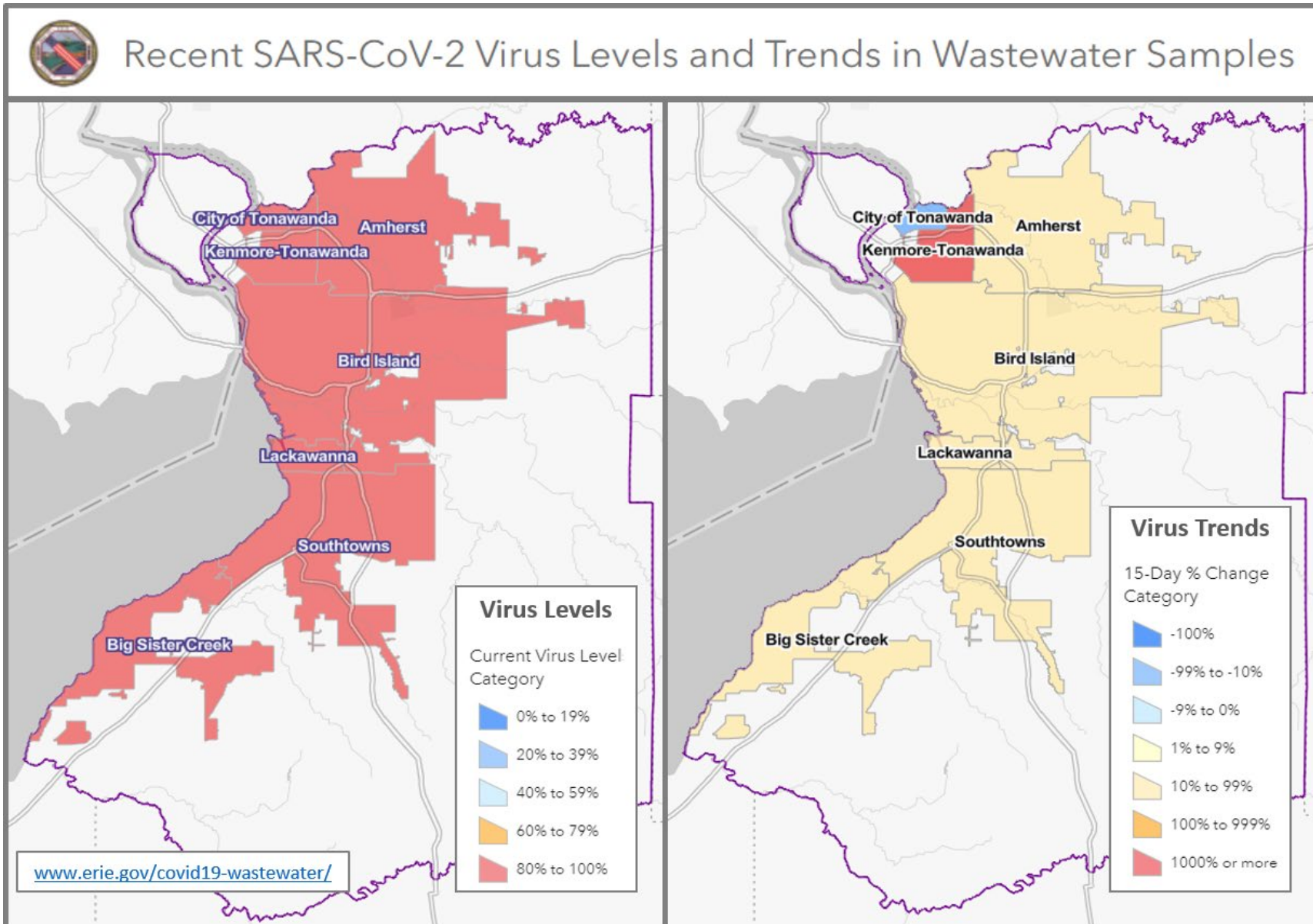
<sup>2</sup> *Calculated by dividing total cases in the past 7 days by the zip code population, and multiplying by 100,000*

<sup>†</sup> *Total Population Value for Erie County (954,236) from 2020 U.S. Census Bureau used to calculate 'All Erie County' daily and 7-day case rates*

The New York State Department of Health maintains a COVID-19 data dashboard with county-level reporting.

<https://coronavirus.health.ny.gov/covid-19-data-new-york>

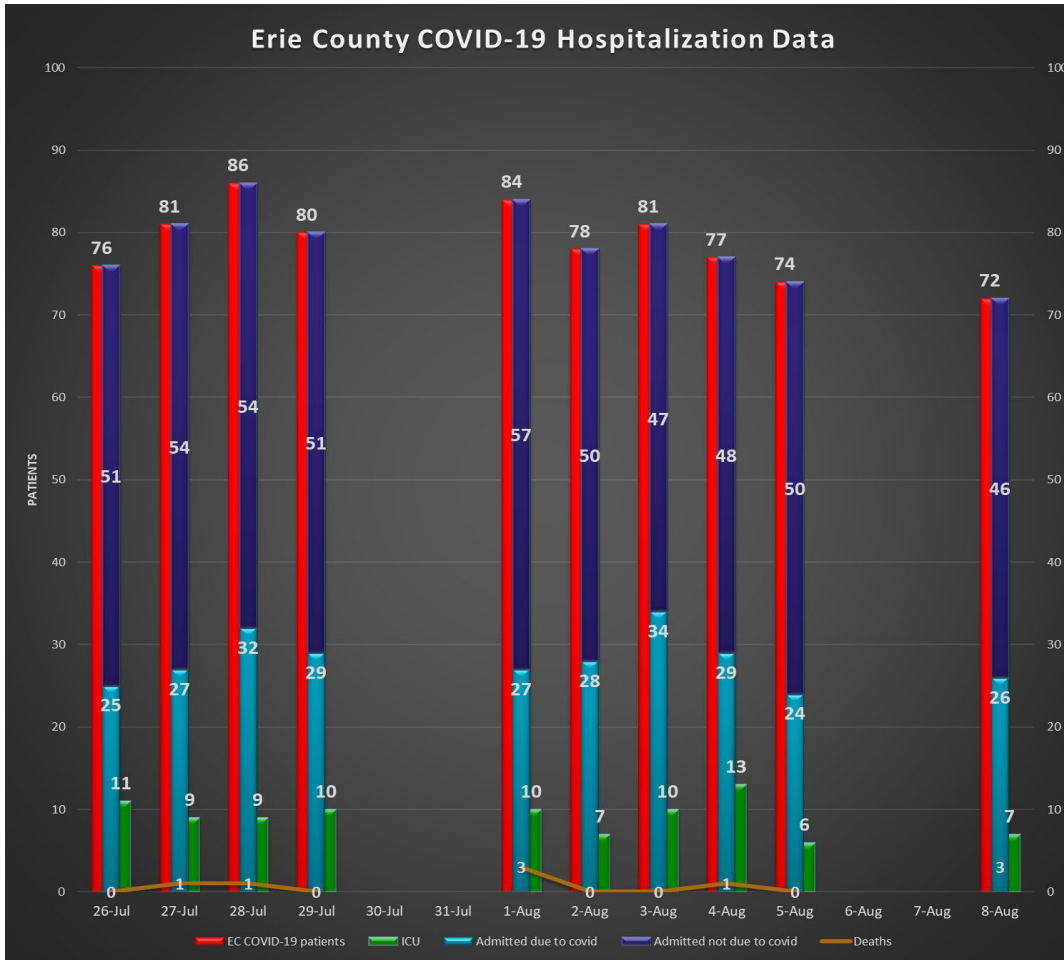
Figure 3: Erie County COVID-19 Wastewater Surveillance



Charts as of August 2, 2022

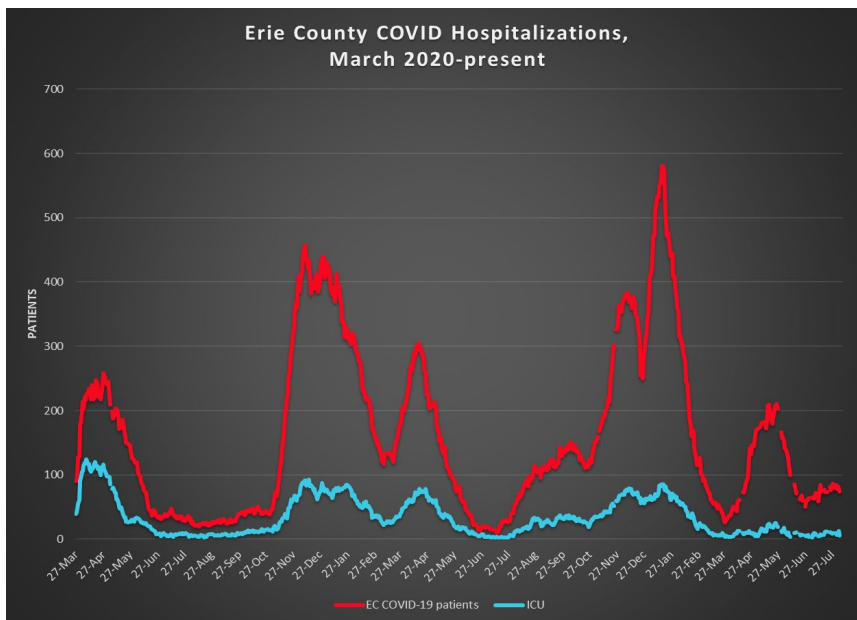
All data are provisional and represent data available at the time of the report.

Figure 4a



Most recent available data from NYSDOH included.

Figure 4b



Data provided by Erie County hospitals and NYSDOH. Patients may include residents from outside Erie County. See <https://coronavirus.health.ny.gov/daily-hospitalization-summary>



**Section 2: COVID-19 Vaccine Information**

**Table 3 Most recent data provided; will update when more recent data are available.**

**Erie County COVID-19 Vaccination Rates, Age & ZIP Code**

ZIP Code	City	% of 0-19 population vaccinated (with at least 1 dose)	% of 20-34 population vaccinated (with at least 1 dose)	% of 35-64 population vaccinated (with at least 1 dose)	% of 65+ population vaccinated (with at least 1 dose)	% of 20+ Population Vaccinated (with at least 1 dose)
14112	North Evans	n/a	31.1%	n/a	48.3%	41.0%
14034	Collins	40.1%	29.3%	35.3%	89.9%	41.7%
14061	Farnham	9.8%	21.0%	47.1%	100.0%	43.5%
14070	Gowanda	30.3%	31.2%	46.1%	76.4%	48.2%
14035	Collins Center	11.8%	100.0%	37.2%	100.0%	50.0%
14030	Chaffee	20.2%	53.1%	53.0%	82.0%	59.6%
14170	West Falls	30.8%	74.9%	48.9%	100.0%	60.9%
14111	North Collins	30.7%	56.2%	61.1%	100.0%	65.9%
14004	Alden	28.9%	53.9%	63.3%	84.7%	66.5%
14055	East Concord	31.1%	67.4%	58.8%	100.0%	68.3%
14025	Boston	35.5%	86.3%	63.0%	69.7%	68.5%
14080	Holland	30.2%	59.9%	61.7%	96.4%	69.2%
14210	Buffalo	37.1%	57.1%	74.5%	84.9%	70.1%
14206	Buffalo	39.8%	63.3%	74.8%	79.2%	72.5%
14001	Akron	37.5%	60.4%	66.7%	100.0%	73.3%
14208	Buffalo	35.0%	61.5%	86.0%	70.5%	73.6%
14222	Buffalo (Elmwood Village)	37.3%	60.7%	90.2%	80.3%	74.3%
14219	Blasdell	37.1%	60.9%	73.5%	97.1%	74.9%
14047	Derby	37.1%	66.6%	70.0%	100.0%	76.2%
14091	Lawtons	42.2%	45.2%	86.8%	89.6%	76.4%
14006	Angola	33.9%	67.3%	75.6%	86.6%	77.1%
14215	Buffalo	35.9%	65.3%	78.7%	100.0%	77.3%
14141	Springville	32.9%	71.4%	70.4%	97.5%	77.6%
14102	Marilla	32.4%	54.2%	82.6%	94.6%	77.9%
14059	Elma	37.3%	69.8%	74.1%	89.3%	77.9%
14204	Buffalo	36.8%	73.1%	76.4%	89.4%	78.0%
14069	Glenwood	37.2%	84.7%	70.2%	90.9%	78.1%
14218	Lackawanna	30.8%	61.8%	80.2%	97.2%	78.6%
14211	Buffalo	43.4%	73.6%	80.2%	87.9%	79.5%
14139	South Wales	34.8%	92.7%	68.7%	100.0%	80.0%
14057	Eden	44.2%	87.7%	71.0%	100.0%	80.6%
14207	Buffalo	40.7%	62.0%	94.3%	90.5%	80.7%
14216	Buffalo	47.8%	68.8%	84.4%	100.0%	81.2%
14043	Depew	42.6%	69.5%	81.7%	93.3%	81.4%
14209	Buffalo	35.0%	74.0%	84.1%	100.0%	83.1%
14225	Cheektowaga	44.6%	66.3%	91.6%	92.2%	83.5%
14220	Buffalo	43.2%	74.0%	84.0%	98.1%	83.6%

All data are provisional and represent data available at the time of the report.

<https://covid19vaccine.health.ny.gov/vaccine-demographic-data>

14052	East Aurora	61.9%	83.8%	76.3%	100.0%	83.7%
14150	Tonawanda	45.0%	77.3%	82.9%	94.2%	84.5%
14214	Buffalo	43.7%	78.9%	86.9%	93.8%	84.6%
14031	Clarence	50.8%	74.4%	79.9%	100.0%	84.7%
14224	West Seneca	48.8%	78.4%	79.9%	100.0%	85.0%
14217	Kenmore	53.7%	88.1%	79.9%	92.5%	85.0%
14212	Buffalo	44.8%	83.2%	86.4%	85.8%	85.4%
14227	Cheektowaga	54.7%	73.5%	82.8%	100.0%	85.7%
14201	Buffalo	33.0%	85.0%	83.0%	98.1%	86.0%
14032	Clarence Center	53.4%	100.0%	79.0%	100.0%	86.1%
14213	Buffalo	35.0%	80.7%	90.2%	93.7%	86.6%
14169	Wales Center	62.1%	n/a	80.7%	100.0%	87.2%
14202	Buffalo	43.3%	69.8%	100.0%	100.0%	87.5%
14228	Amherst (Getzville)	54.6%	79.8%	91.1%	95.0%	87.5%
14075	Hamburg	52.1%	89.2%	80.8%	100.0%	87.6%
14072	Grand Island	51.6%	91.4%	82.9%	100.0%	88.6%
14051	East Amherst	63.9%	100.0%	82.2%	100.0%	88.9%
14226	Amherst (Snyder/Eggertsville)	54.2%	87.6%	87.8%	100.0%	90.4%
14223	Tonawanda	46.4%	86.2%	88.1%	100.0%	90.4%
14127	Orchard Park	57.8%	100.0%	84.2%	100.0%	91.3%
14086	Lancaster	55.0%	92.8%	87.6%	100.0%	91.4%
14026	Bowmansville	100.0%	100.0%	88.0%	100.0%	92.6%
14221	Amherst/Williamsville/Clare	63.2%	100.0%	88.7%	96.8%	93.4%
14033	Colden	55.9%	100.0%	94.5%	95.5%	95.2%
14085	Lake View	57.7%	89.1%	99.9%	96.2%	96.7%
14068	Getzville	72.7%	100.0%	100.0%	94.0%	97.6%
14134	Sardinia	45.7%	100.0%	100.0%	100.0%	100.0%
14203	Buffalo	68.2%	100.0%	100.0%	100.0%	100.0%
<b>Total</b>		<b>45.4%</b>	<b>75.2%</b>	<b>81.8%</b>	<b>95.5%</b>	<b>83.1%</b>

All data are provisional and represent data available at the time of the report.

<https://covid19vaccine.health.ny.gov/vaccine-demographic-data>



## Section 3: COVID-19 Mortality Data

Table 4

### Erie County COVID-19 Deaths by Age Group (January - December 2021)

Age Group	Jan	Feb	Mar	Apr	May	Jun	Jul	Aug	Sep	Oct	Nov	Dec	Total
<40	3	4	0	4	2	0	1	1	0	3	4	3	25
40 to 49	4	3	1	8	2	0	1	1	1	0	3	7	31
50 to 59	8	11	5	7	5	4	1	6	4	11	12	17	91
60 to 69	31	22	6	24	11	5	1	6	11	15	14	50	196
70 to 79	60	34	16	30	21	4	7	10	15	14	24	46	281
80+	163	62	29	27	24	5	1	17	24	38	40	66	496
<b>Total # of Deaths</b>	<b>269</b>	<b>136</b>	<b>57</b>	<b>100</b>	<b>65</b>	<b>18</b>	<b>12</b>	<b>41</b>	<b>55</b>	<b>81</b>	<b>97</b>	<b>189</b>	<b>1,120</b>
<b>Ave. Death Age</b>	<b>81</b>	<b>76</b>	<b>77</b>	<b>71</b>	<b>74</b>	<b>70</b>	<b>70</b>	<b>74</b>	<b>77</b>	<b>76</b>	<b>73</b>	<b>73</b>	<b>76</b>

Table 5

### Erie County COVID-19 Deaths by Age Group (January 1-July 26, 2022)

Age Group	Jan	Feb	Mar	Apr	May	Jun	Jul	Total
<40	7	2	0	0	1	1	0	11
40 to 49	9	1	1	1	1	0	1	14
50 to 59	19	9	2	0	1	1	0	32
60 to 69	49	20	3	4	7	7	0	90
70 to 79	57	25	3	7	17	5	5	119
80+	90	40	10	17	37	11	5	210
<b>Total # of Deaths</b>	<b>231</b>	<b>97</b>	<b>19</b>	<b>29</b>	<b>64</b>	<b>25</b>	<b>11</b>	<b>476</b>
<b>Ave. Death Age</b>	<b>74</b>	<b>76</b>	<b>78</b>	<b>80</b>	<b>81</b>	<b>76</b>	<b>79</b>	<b>76</b>

2020 total deaths	1,276
2021 total deaths	1,120
2022 deaths to date	476
<b>Total:</b>	<b>2,872</b>

Table 6

### Erie County COVID-19 Deaths by Residence

Residence	Fatalities	% of Fatalities	% of Population*
Buffalo	758	26.4%	29.2%
Erie County Excl. Buffalo	2,114	73.6%	70.8%
<b>All of Erie County</b>	<b>2,872</b>	<b>100.0%</b>	<b>100.0%</b>

\*Population Source: Prepared from 2020 Census Bureau

The latest COVID-19 mortality data are provided; we will update when more recent data are available.