



**Erie County  
Department of  
Health**



**Public Health**  
Prevent. Promote. Protect.

## COVID-19 Data Update

Week ending August 13, 2022

All data are provisional.

1,213 new COVID-19 cases were recorded for the week ending August 13, 2022. This is a 4% decrease from the previous week's total (1,261 cases). These data do not include at-home tests. The weekly COVID-19 positivity rate was 11.3%, a slight decrease from the previous week's COVID-19 positivity rate of 11.9%. Overall reported COVID-19 diagnostic tests were stable, with 10,702 tests compared to 10,636 tests during the previous week.

7-day case rate per 100,000 persons was 127.1, down from 132.1 the previous week. Erie County remains at a low COVID-19 Community Level per CDC indicators. However, Erie County remains in "high" transmission per CDC community transmission metrics.

Buffalo city COVID-19 cases comprised 26.3% of new COVID-19 cases this past week. (Buffalo city population is 29.2% of all Erie County residents).

Erie County COVID-19 Wastewater Surveillance Data: See Figure 3. COVID-19 wastewater surveillance data through August 2, 2022 showed SARS-CoV-2 viral particles in the top 80-100% of samples collected since 12/1/21 within each of the seven sewershed areas sampled. The City of Tonawanda, Kenmore-Tonawanda and Big Sister Creek showed between a 1-9% increase over 15 days leading up to August 2. Amherst and Bird Island sewersheds showed between a 10-99% increase over that period. The Southtowns sewershed had between 0-9% decrease over 15 days leading up to August 2, and the Lackawanna sewershed had a 100% decrease in that time period. These data show that COVID-19 continues to circulate within Erie County at a high level. We will include more recent data with the next weekly update. See <https://www.erie.gov/covid19-wastewater/>

Erie County COVID-19 Hospitalization Data: See Figures 4a and 4b. NYSDOH publishes updated hospitalization data by region at <https://coronavirus.health.ny.gov/daily-hospitalization-summary>.

Erie County COVID-19 Vaccination Data: See Section 2. NYSDOH updates vaccine data daily. Demographic data: <https://coronavirus.health.ny.gov/demographic-vaccination-data>.

Erie County COVID-19 Mortality Data: Mortality data are updated through July 26, 2022 based on data available to ECDOH. More recent data will be reported when available. NYSDOH reports COVID-19 mortality data at <https://coronavirus.health.ny.gov/fatalities-0>. See Section 3.

### CONTENTS

#### **Section 1: COVID-19 Case Data**

Figure 1: Confirmed COVID-19 Cases by Age Group & Gender (to date)	Page 1
Figure 2: Confirmed COVID-19 Cases by Age Group and Gender (latest week)	Page 1
Table 1: New COVID-19 Cases in the Past Seven Days	Page 1
Figure 3: Erie County COVID-19 Wastewater Surveillance	Page 2
Table 2: Confirmed COVID-19 Cases by ZIP Code	Page 3
Figures 4a and 4b: Erie County COVID-19 Hospitalizations	Page 5

#### **Section 2: COVID-19 Vaccination Data**

Table 3: Erie County COVID-19 Vaccination Rates by Age and ZIP Code	Page 6
---	--------

#### **Section 3: COVID-19 Mortality Data**

Tables 4 & 5: Erie County COVID-19 Deaths By Age Group	Page 8
Table 6: Erie County COVID-19 Deaths by Residence	Page 8

## Section 1: Confirmed COVID-19 Cases

Figure 1

**Confirmed COVID-19 Cases by Age Group and Gender (March 2020-present)**

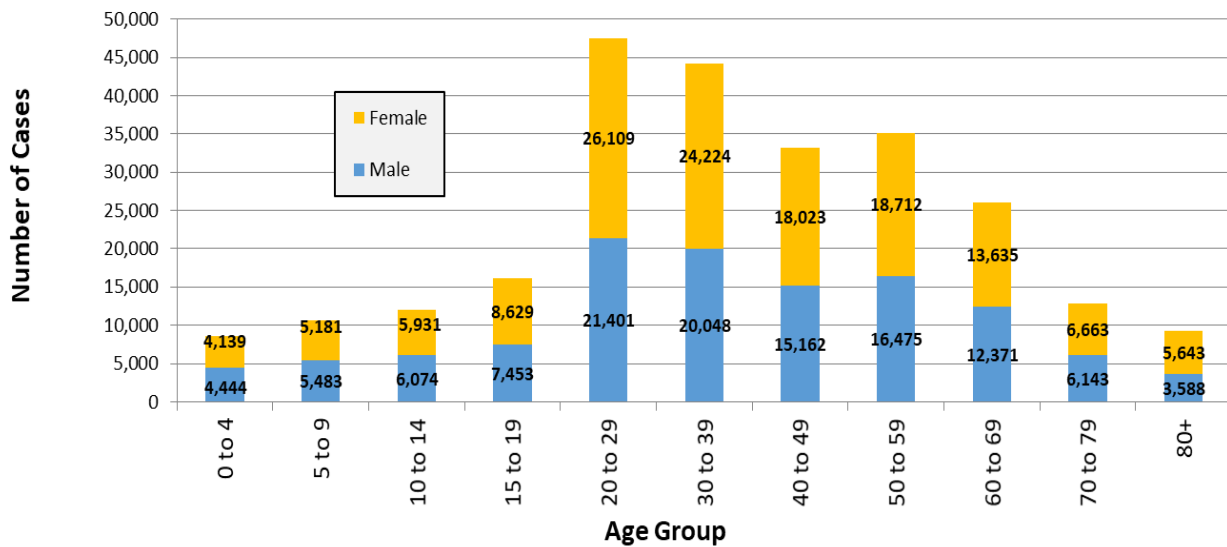


Figure 2

**Confirmed COVID-19 Cases by Age Group (August 7-13, 2022)**

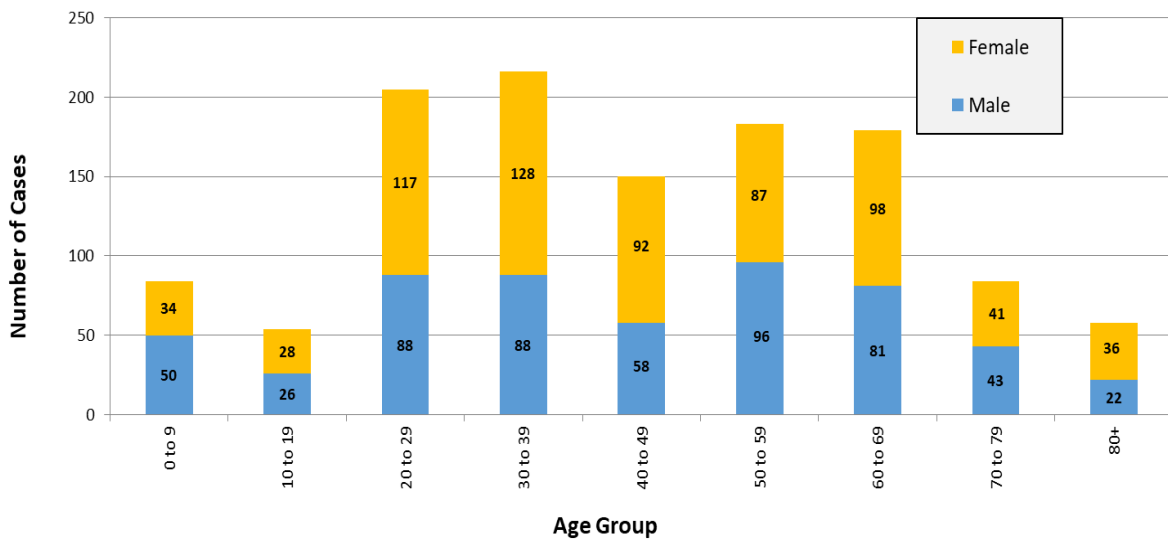


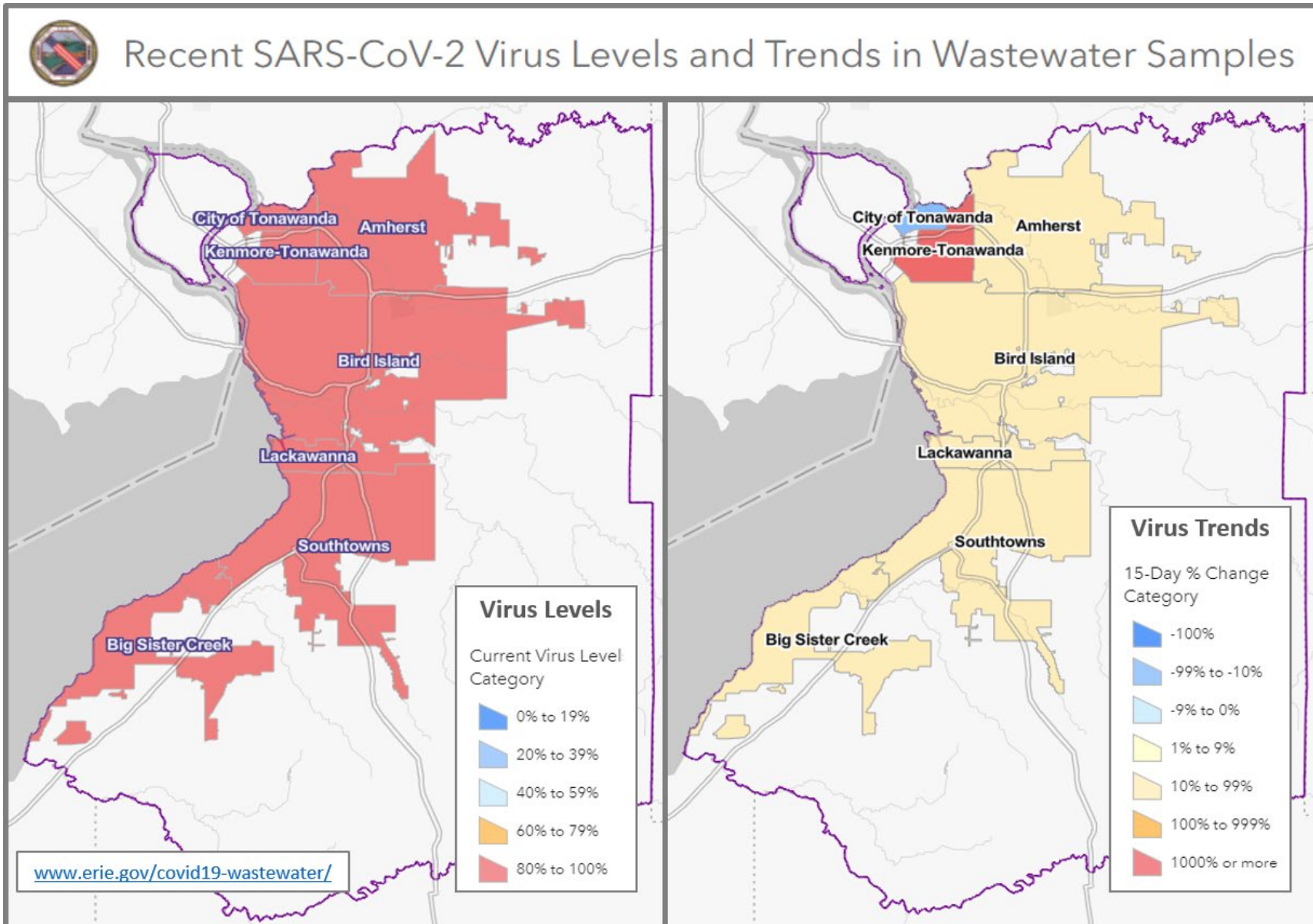
Table 1

**New Cases in Past Seven Days, Past Six Weeks**

Week Ending	New Cases in Past 7 Days	Total New Cases in the Past Seven Days per 100,000 Persons*
7/9/2022	978	102.5
7/16/2022	1,181	123.8
7/23/2022	1,399	146.6
7/30/2022	1,391	145.8
8/6/2022	1,261	132.1
8/13/2022	1,213	127.1

This metric shows trends over time.  
\*Population Source: 2020 U.S. Census Bureau

Figure 3: Erie County COVID-19 Wastewater Surveillance



All data are provisional and represent data available at the time of the report.

Table 2

**Confirmed COVID-19 Cases by ZIP Code**

ZIP Code	City	Cases	Zip Code Population**	New Daily Cases per 100,000 Persons on 7-Day Rolling Average <sup>1</sup>	Total New Cases per 100,000 Persons in the Past 7 Days <sup>2</sup>
14221	Amherst/Williamsville/Clarence	72	53,555	19.2	134.4
14150	Tonawanda	62	41,676	21.3	148.8
14075	Hamburg	61	41,937	20.8	145.5
14224	West Seneca	56	39,889	20.1	140.4
14215	Buffalo (East)	55	39,999	19.6	137.5
14226	Amherst (Snyder/Eggertsville)	54	29,267	26.4	184.5
14225	Cheektowaga	53	33,385	22.7	158.8
14086	Lancaster	49	31,847	22.0	153.9
14220	Buffalo (South)	37	24,227	21.8	152.7
14218	Lackawanna	36	19,039	27.0	189.1
14223	Tonawanda	36	22,665	22.7	158.8
14127	Orchard Park	35	29,961	16.7	116.8
14072	Grand Island	34	20,374	23.8	166.9
14227	Cheektowaga	31	23,426	18.9	132.3
14217	Kenmore	29	23,480	17.6	123.5
14031	Clarence	28	9,392	42.6	298.1
14043	Depew	28	24,742	16.2	113.2
14211	Buffalo/Cheektowaga	28	22,611	17.7	123.8
14228	Amherst (Getzville)	26	20,857	17.8	124.7
14216	Buffalo (North)	25	22,431	15.9	111.5
14206	Buffalo (Kaisertown)	24	20,751	16.5	115.7
14213	Buffalo (West Side)	23	24,465	13.4	94.0
14051	Amherst (East)	21	19,533	15.4	107.5
14004	Alden	19	12,704	21.4	149.6
14057	Eden	19	8,116	33.4	234.1
14201	Buffalo (Downtown)	18	11,549	22.3	155.9
14214	Buffalo (University)	18	19,775	13.0	91.0
14219	Blasdell	17	11,536	21.1	147.4
14210	Buffalo (South)	16	14,694	15.6	108.9
14208	Buffalo (east)	15	11,125	19.3	134.8
14001	Akron	13	9,464	x	x
14207	Buffalo (Black Rock/Riverside)	13	23,552	x	x
14212	Buffalo (Broadway)/Sloan	13	10,641	x	x
14006	Angola	12	9,858	x	x
14204	Buffalo (East)	12	8,691	x	x
14032	Clarence (North)	11	7,989	x	x
14052	Aurora	11	17,329	x	x
14222	Buffalo (Elmwood Village)	11	14,046	x	x
14209	Buffalo (Delaware)	10	7,926	x	x
14068	Amherst (Getzville)	9	7,150	x	x

All data are provisional and represent data available at the time of the report.

14141	Springville	7	7,728	x	x
14081	Irving	6	3,095	x	x
14085	Hamburg (Lake View)	6	7,353	x	x
14111	North Collins	6	3,352	x	x
14025	Boston	5	3,039	x	x
14059	Elma	5	8,933	x	x
14091	Lawtons	5	1,079	x	x
14026	Bowmansville	*	674	x	x
14030	Chaffee	*	1,807	x	x
14033	Colden	*	2,219	x	x
14034	Collins	*	2,742	x	x
14047	Derby	*	6,440	x	x
14055	East Concord	*	1,405	x	x
14069	Glenwood	*	844	x	x
14070	Gowanda	*	6,732	x	x
14080	Holland	*	4,330	x	x
14102	Marilla	*	1,281	x	x
14139	Wales	*	2,125	x	x
14170	West Falls	*	2,286	x	x
14202	Buffalo (Downtown)	*	3,911	x	x
14203	Buffalo	*	1,618	x	x
14231	Buffalo	*	n/a	x	x
14260-1426	Amherst (UB)	*	10,300	x	x
	<b>All Erie County<sup>†</sup></b>	<b>1,213</b>	<b>954,236</b>	<b>18.2</b>	<b>127.1</b>

*\*\*Population Source: ZIP code data from U.S. Census Bureau, DP-1, General Population & Housing Characteristics*

*ZCTAs are an approximation of mailing ZIP codes*

*Buffalo and Erie County from 2010 (U.S. Census Redistricting Data, PL 94-171) Summary File*

<sup>1</sup> *Calculated by dividing total cases in past 7 days by 7, then dividing by ZIP code pop. & multiplying by 100,000*

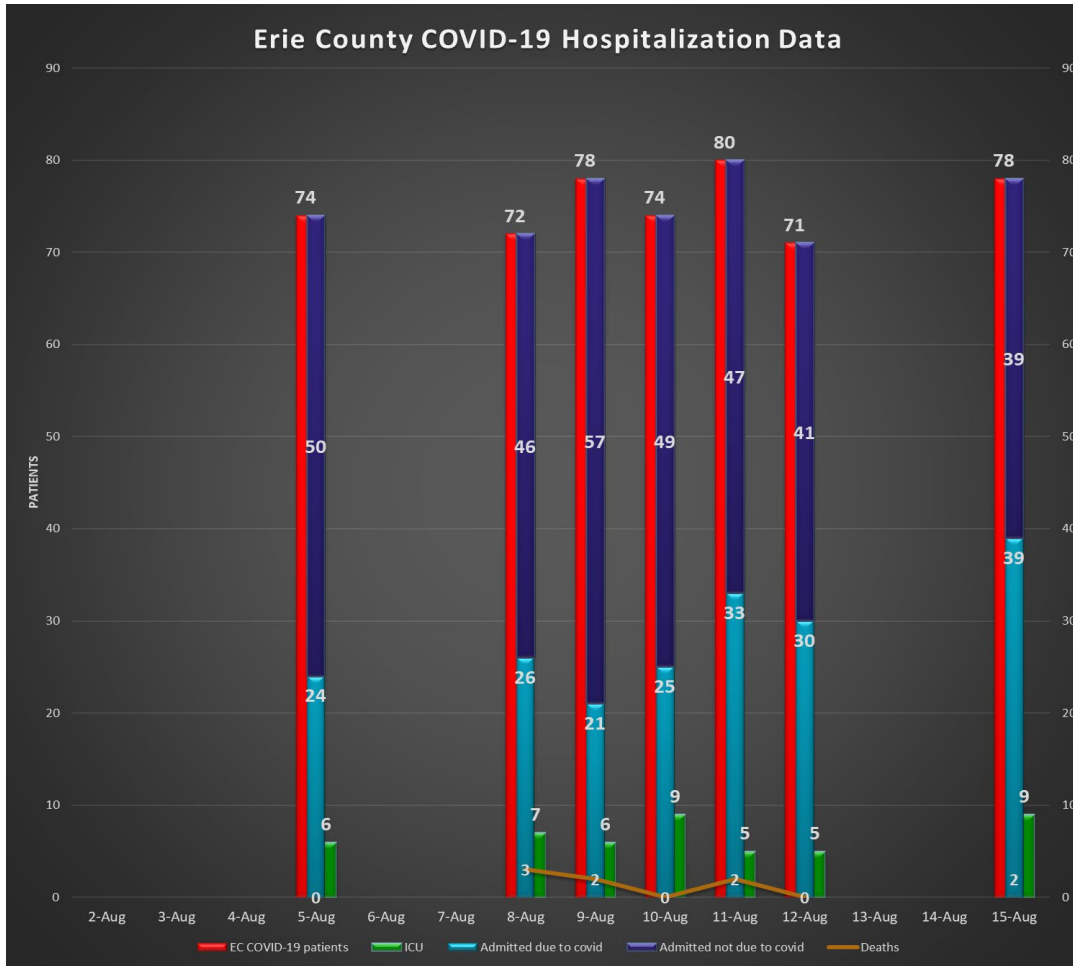
<sup>2</sup> *Calculated by dividing total cases in the past 7 days by the zip code population, and multiplying by 100,000*

<sup>†</sup> *Total Population Value for Erie County (954,236) from 2020 U.S. Census Bureau used to calculate 'All Erie County' daily and 7-day case rates*

The New York State Department of Health maintains a COVID-19 data dashboard with county-level reporting.

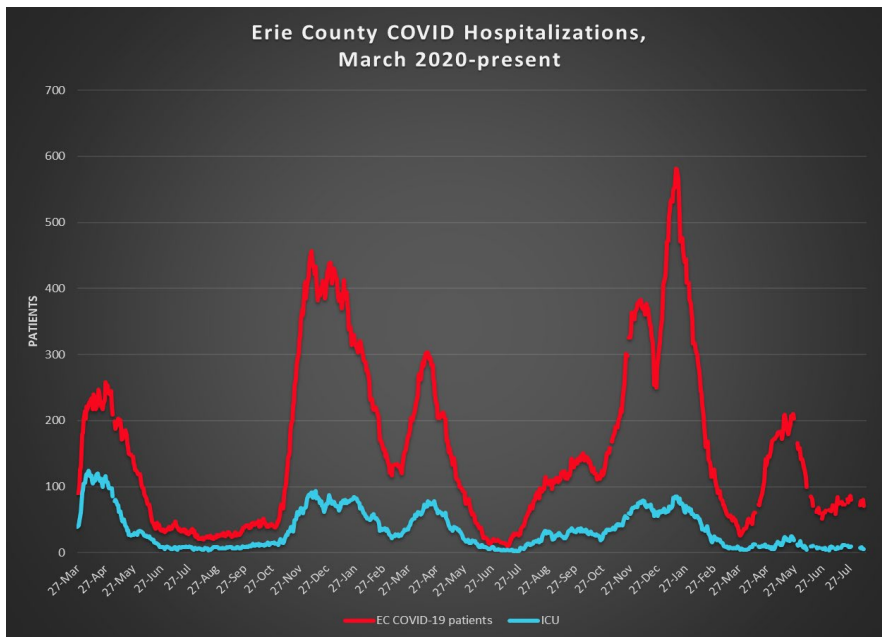
<https://coronavirus.health.ny.gov/covid-19-data-new-york>

Figure 4a



Most recent available data from NYSDOH included.

Figure 4b



Data provided by Erie County hospitals and NYSDOH. Patients may include residents from outside Erie County. See <https://coronavirus.health.ny.gov/daily-hospitalization-summary>



**Section 2: COVID-19 Vaccine Information**

**Table 3 Most recent data provided; will update when more recent data are available.**

**Erie County COVID-19 Vaccination Rates, Age & ZIP Code**

ZIP Code	City	% of 0-19 population vaccinated (with at least 1 dose)	% of 20-34 population vaccinated (with at least 1 dose)	% of 35-64 population vaccinated (with at least 1 dose)	% of 65+ population vaccinated (with at least 1 dose)	% of 20+ Population Vaccinated (with at least 1 dose)
14112	North Evans	n/a	31.1%	n/a	48.3%	41.0%
14034	Collins	40.1%	29.3%	35.3%	89.9%	41.7%
14061	Farnham	9.8%	21.0%	47.1%	100.0%	43.5%
14070	Gowanda	30.3%	31.2%	46.1%	76.4%	48.2%
14035	Collins Center	11.8%	100.0%	37.2%	100.0%	50.0%
14030	Chaffee	20.2%	53.1%	53.0%	82.0%	59.6%
14170	West Falls	30.8%	74.9%	48.9%	100.0%	60.9%
14111	North Collins	30.7%	56.2%	61.1%	100.0%	65.9%
14004	Alden	28.9%	53.9%	63.3%	84.7%	66.5%
14055	East Concord	31.1%	67.4%	58.8%	100.0%	68.3%
14025	Boston	35.5%	86.3%	63.0%	69.7%	68.5%
14080	Holland	30.2%	59.9%	61.7%	96.4%	69.2%
14210	Buffalo	37.1%	57.1%	74.5%	84.9%	70.1%
14206	Buffalo	39.8%	63.3%	74.8%	79.2%	72.5%
14001	Akron	37.5%	60.4%	66.7%	100.0%	73.3%
14208	Buffalo	35.0%	61.5%	86.0%	70.5%	73.6%
14222	Buffalo (Elmwood Village)	37.3%	60.7%	90.2%	80.3%	74.3%
14219	Blasdell	37.1%	60.9%	73.5%	97.1%	74.9%
14047	Derby	37.1%	66.6%	70.0%	100.0%	76.2%
14091	Lawtons	42.2%	45.2%	86.8%	89.6%	76.4%
14006	Angola	33.9%	67.3%	75.6%	86.6%	77.1%
14215	Buffalo	35.9%	65.3%	78.7%	100.0%	77.3%
14141	Springville	32.9%	71.4%	70.4%	97.5%	77.6%
14102	Marilla	32.4%	54.2%	82.6%	94.6%	77.9%
14059	Elma	37.3%	69.8%	74.1%	89.3%	77.9%
14204	Buffalo	36.8%	73.1%	76.4%	89.4%	78.0%
14069	Glenwood	37.2%	84.7%	70.2%	90.9%	78.1%
14218	Lackawanna	30.8%	61.8%	80.2%	97.2%	78.6%
14211	Buffalo	43.4%	73.6%	80.2%	87.9%	79.5%
14139	South Wales	34.8%	92.7%	68.7%	100.0%	80.0%
14057	Eden	44.2%	87.7%	71.0%	100.0%	80.6%
14207	Buffalo	40.7%	62.0%	94.3%	90.5%	80.7%
14216	Buffalo	47.8%	68.8%	84.4%	100.0%	81.2%
14043	Depew	42.6%	69.5%	81.7%	93.3%	81.4%
14209	Buffalo	35.0%	74.0%	84.1%	100.0%	83.1%
14225	Cheektowaga	44.6%	66.3%	91.6%	92.2%	83.5%
14220	Buffalo	43.2%	74.0%	84.0%	98.1%	83.6%

All data are provisional and represent data available at the time of the report.

<https://covid19vaccine.health.ny.gov/vaccine-demographic-data>

14052	East Aurora	61.9%	83.8%	76.3%	100.0%	83.7%
14150	Tonawanda	45.0%	77.3%	82.9%	94.2%	84.5%
14214	Buffalo	43.7%	78.9%	86.9%	93.8%	84.6%
14031	Clarence	50.8%	74.4%	79.9%	100.0%	84.7%
14224	West Seneca	48.8%	78.4%	79.9%	100.0%	85.0%
14217	Kenmore	53.7%	88.1%	79.9%	92.5%	85.0%
14212	Buffalo	44.8%	83.2%	86.4%	85.8%	85.4%
14227	Cheektowaga	54.7%	73.5%	82.8%	100.0%	85.7%
14201	Buffalo	33.0%	85.0%	83.0%	98.1%	86.0%
14032	Clarence Center	53.4%	100.0%	79.0%	100.0%	86.1%
14213	Buffalo	35.0%	80.7%	90.2%	93.7%	86.6%
14169	Wales Center	62.1%	n/a	80.7%	100.0%	87.2%
14202	Buffalo	43.3%	69.8%	100.0%	100.0%	87.5%
14228	Amherst (Getzville)	54.6%	79.8%	91.1%	95.0%	87.5%
14075	Hamburg	52.1%	89.2%	80.8%	100.0%	87.6%
14072	Grand Island	51.6%	91.4%	82.9%	100.0%	88.6%
14051	East Amherst	63.9%	100.0%	82.2%	100.0%	88.9%
14226	Amherst (Snyder/Eggertsville)	54.2%	87.6%	87.8%	100.0%	90.4%
14223	Tonawanda	46.4%	86.2%	88.1%	100.0%	90.4%
14127	Orchard Park	57.8%	100.0%	84.2%	100.0%	91.3%
14086	Lancaster	55.0%	92.8%	87.6%	100.0%	91.4%
14026	Bowmansville	100.0%	100.0%	88.0%	100.0%	92.6%
14221	Amherst/Williamsville/Clare	63.2%	100.0%	88.7%	96.8%	93.4%
14033	Colden	55.9%	100.0%	94.5%	95.5%	95.2%
14085	Lake View	57.7%	89.1%	99.9%	96.2%	96.7%
14068	Getzville	72.7%	100.0%	100.0%	94.0%	97.6%
14134	Sardinia	45.7%	100.0%	100.0%	100.0%	100.0%
14203	Buffalo	68.2%	100.0%	100.0%	100.0%	100.0%
<b>Total</b>		<b>45.4%</b>	<b>75.2%</b>	<b>81.8%</b>	<b>95.5%</b>	<b>83.1%</b>

All data are provisional and represent data available at the time of the report.

<https://covid19vaccine.health.ny.gov/vaccine-demographic-data>



## Section 3: COVID-19 Mortality Data

Table 4

### *Erie County COVID-19 Deaths by Age Group (January - December 2021)*

Age Group	Jan	Feb	Mar	Apr	May	Jun	Jul	Aug	Sep	Oct	Nov	Dec	Total
<40	3	4	0	4	2	0	1	1	0	3	4	3	25
40 to 49	4	3	1	8	2	0	1	1	1	0	3	7	31
50 to 59	8	11	5	7	5	4	1	6	4	11	12	17	91
60 to 69	31	22	6	24	11	5	1	6	11	15	14	50	196
70 to 79	60	34	16	30	21	4	7	10	15	14	24	46	281
80+	163	62	29	27	24	5	1	17	24	38	40	66	496
<b>Total # of Deaths</b>	<b>269</b>	<b>136</b>	<b>57</b>	<b>100</b>	<b>65</b>	<b>18</b>	<b>12</b>	<b>41</b>	<b>55</b>	<b>81</b>	<b>97</b>	<b>189</b>	<b>1,120</b>
<b>Ave. Death Age</b>	<b>81</b>	<b>76</b>	<b>77</b>	<b>71</b>	<b>74</b>	<b>70</b>	<b>70</b>	<b>74</b>	<b>77</b>	<b>76</b>	<b>73</b>	<b>73</b>	<b>76</b>

Table 5

### *Erie County COVID-19 Deaths by Age Group (January 1-July 26, 2022)*

Age Group	Jan	Feb	Mar	Apr	May	Jun	Jul	Total
<40	7	2	0	0	1	1	0	11
40 to 49	9	1	1	1	1	0	1	14
50 to 59	19	9	2	0	1	1	0	32
60 to 69	49	20	3	4	7	7	0	90
70 to 79	57	25	3	7	17	5	5	119
80+	90	40	10	17	37	11	5	210
<b>Total # of Deaths</b>	<b>231</b>	<b>97</b>	<b>19</b>	<b>29</b>	<b>64</b>	<b>25</b>	<b>11</b>	<b>476</b>
<b>Ave. Death Age</b>	<b>74</b>	<b>76</b>	<b>78</b>	<b>80</b>	<b>81</b>	<b>76</b>	<b>79</b>	<b>76</b>

2020 total deaths	1,276
2021 total deaths	1,120
2022 deaths to date	476
<b>Total:</b>	<b>2,872</b>

Table 6

### *Erie County COVID-19 Deaths by Residence*

Residence	Fatalities	% of Fatalities	% of Population*
Buffalo	758	26.4%	29.2%
Erie County Excl. Buffalo	2,114	73.6%	70.8%
<b>All of Erie County</b>	<b>2,872</b>	<b>100.0%</b>	<b>100.0%</b>

\*Population Source: Prepared from 2020 Census Bureau

The latest COVID-19 mortality data are provided; we will update when more recent data are available.