



**Erie County
Department of
Health**



Public Health
Prevent. Promote. Protect.

COVID-19 Data Update

Week ending September 3, 2022

All data are provisional.

1,316 new COVID-19 cases were recorded for the week ending September 3, 2022. This is a 9.5% decrease from the previous week's total (1,454 cases). These data do not include at-home tests. The weekly COVID-19 positivity rate was 13.1%, a slight decrease from the previous week's COVID-19 positivity rate of 13.5%. Overall reported COVID-19 diagnostic tests were stable, with 10,033 tests compared to 10,757 tests during the previous week.

7-day case rate per 100,000 persons was 137.9, down from 152.4 the previous week. Erie County is at a "low" COVID-19 Community Level per CDC indicators, a shift from "medium" the previous week. And, Erie County remains in "high" transmission per CDC community transmission metrics.

Buffalo city COVID-19 cases comprised 33.8% of new COVID-19 cases this past week. (Buffalo city population is 29.2% of all Erie County residents).

Erie County COVID-19 Wastewater Surveillance Data: See Figure 3. COVID-19 wastewater surveillance data through August 30, 2022 showed SARS-CoV-2 viral particles in the top 80-100% of samples collected since 12/1/21 within the Bird Island sewershed area. Lackawanna sewershed was in the 60-79% category; Big Sister Creek and Southtowns were in the 40-59% category; Amherst and City of Tonawanda were in the 20-39% category; and, Kenmore-Tonawanda was in the 0-19% category. Sewersheds for Amherst, Lackawanna, Southtowns and the city of Tonawanda showed a 99-10% decrease in detected viral particles over the past two weeks; Bird Island and Kenmore-Tonawanda showed a 1-9% increase; and Big Sister Creek showed at 10-99% increase. See <https://www.erie.gov/covid19-wastewater/>

Erie County COVID-19 Hospitalization Data: See Figures 4a and 4b. NYSDOH publishes updated hospitalization data by region at <https://coronavirus.health.ny.gov/daily-hospitalization-summary>.

Erie County COVID-19 Vaccination Data: See Section 2. NYSDOH updates vaccine data daily. Demographic data: <https://coronavirus.health.ny.gov/demographic-vaccination-data>.

Erie County COVID-19 Mortality Data: Mortality data are updated through July 26, 2022 based on data available to ECDOH. More recent data will be reported when available. NYSDOH reports COVID-19 mortality data at <https://coronavirus.health.ny.gov/fatalities-0>. See Section 3.

CONTENTS

Section 1: COVID-19 Case Data

| | |
|--|--------|
| Figure 1: Confirmed COVID-19 Cases by Age Group & Gender (to date) | Page 1 |
| Figure 2: Confirmed COVID-19 Cases by Age Group and Gender (latest week) | Page 1 |
| Table 1: New COVID-19 Cases in the Past Seven Days | Page 1 |
| Figure 3: Erie County COVID-19 Wastewater Surveillance | Page 2 |
| Table 2: Confirmed COVID-19 Cases by ZIP Code | Page 3 |
| Figures 4a and 4b: Erie County COVID-19 Hospitalizations | Page 5 |

Section 2: COVID-19 Vaccination Data

| | |
|---|--------|
| Table 3: Erie County COVID-19 Vaccination Rates by Age and ZIP Code | Page 6 |
|---|--------|

Section 3: COVID-19 Mortality Data

| | |
|--|--------|
| Tables 4 & 5: Erie County COVID-19 Deaths By Age Group | Page 8 |
| Table 6: Erie County COVID-19 Deaths by Residence | Page 8 |

Section 1: Confirmed COVID-19 Cases

Figure 1

Confirmed COVID-19 Cases by Age Group and Gender (March 2020-present)

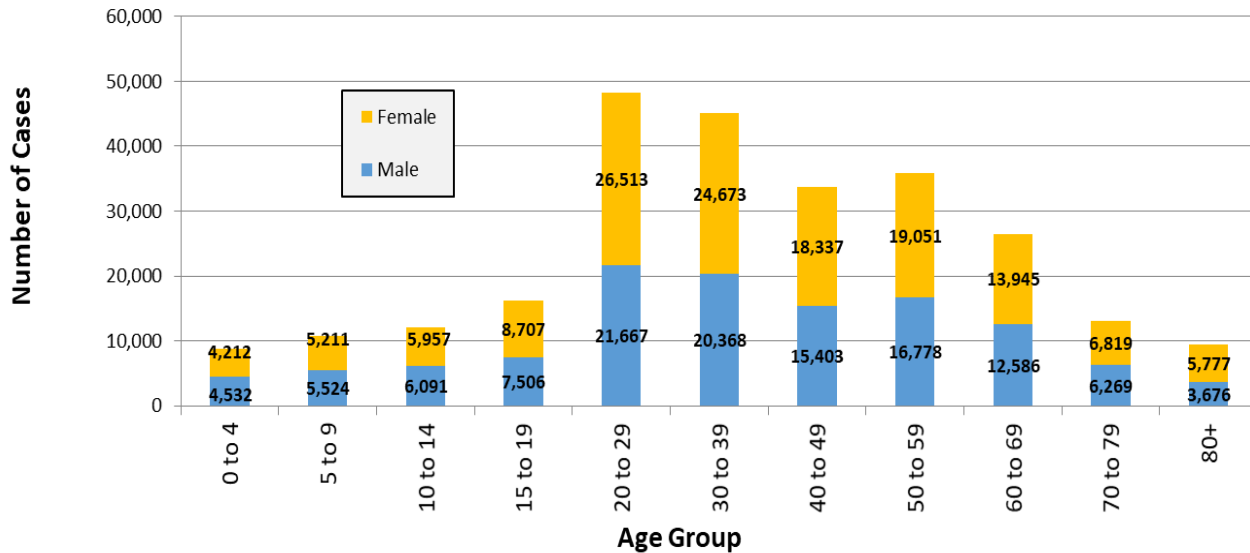


Figure 2

Confirmed COVID-19 Cases by Age Group (August 28-September 3, 2022)

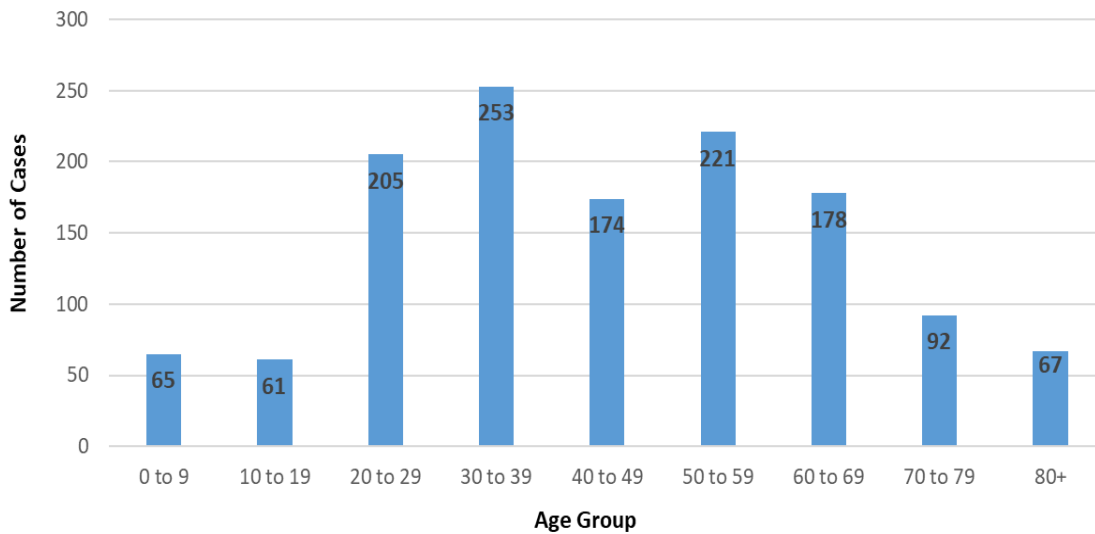


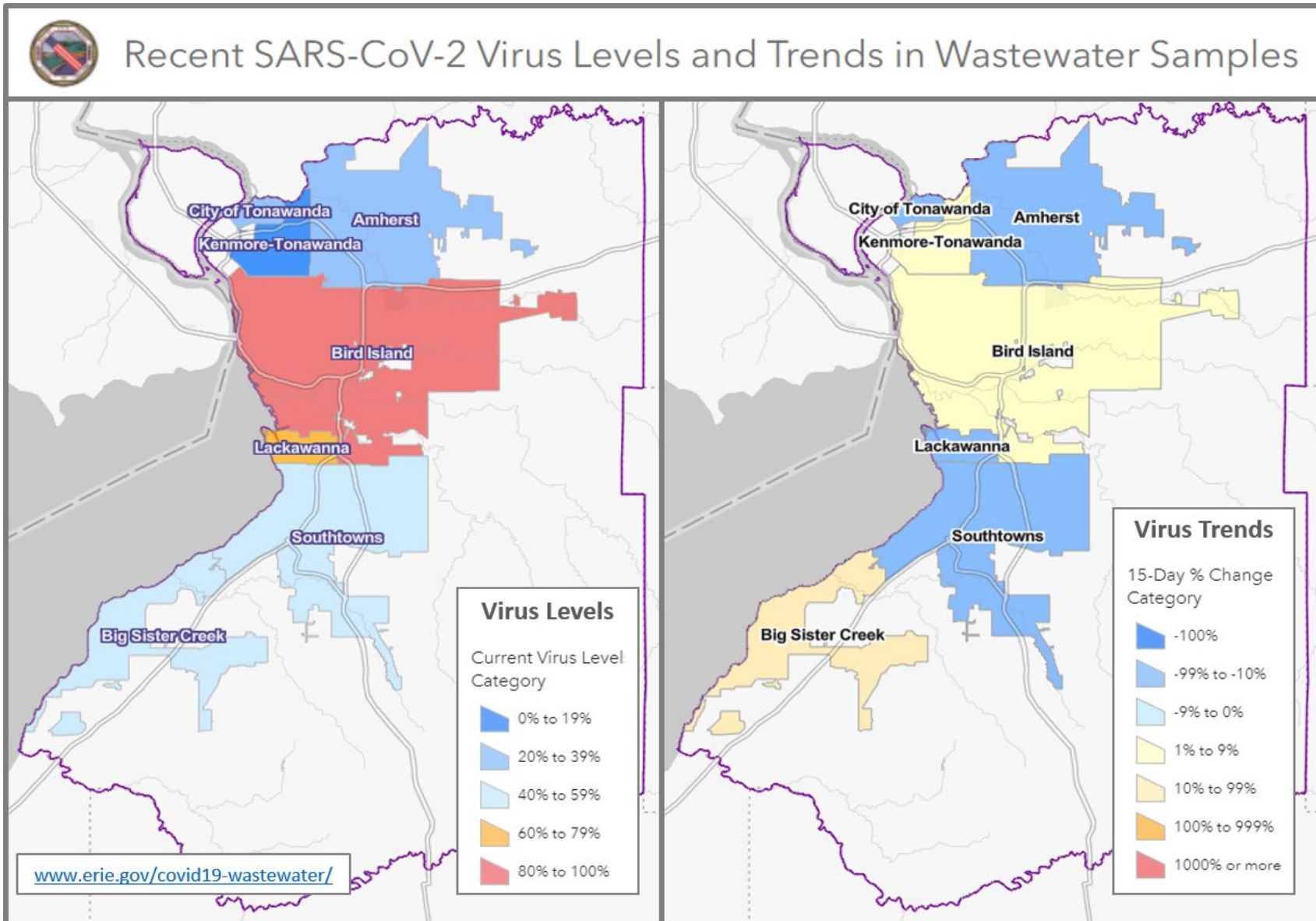
Table 1

New Cases in Past Seven Days, Past Six Weeks

| Week Ending | New Cases in Past 7 Days | Total New Cases in the Past Seven Days per 100,000 Persons* |
|-------------|--------------------------|---|
| 7/30/2022 | 1,391 | 145.8 |
| 8/6/2022 | 1,261 | 132.1 |
| 8/13/2022 | 1,213 | 127.1 |
| 8/20/2022 | 1,301 | 136.3 |
| 8/27/2022 | 1,454 | 152.4 |
| 9/3/2022 | 1,316 | 137.9 |

This metric shows trends over time.
*Population Source: 2020 U.S. Census Bureau

Figure 3: Erie County COVID-19 Wastewater Surveillance



Charts as of August 30, 2022

All data are provisional and represent data available at the time of the report.

Table 2

Confirmed COVID-19 Cases by ZIP Code

| ZIP Code | City | Cases | Zip Code Population** | New Daily Cases per 100,000 Persons on 7-Day Rolling Average ¹ | Total New Cases per 100,000 Persons in the Past 7 Days ² |
|----------|--------------------------------|-------|-----------------------|---|---|
| 14215 | Buffalo (East) | 83 | 39,999 | 29.6 | 207.5 |
| 14221 | Amherst/Williamsville/Clarence | 83 | 53,555 | 22.1 | 155.0 |
| 14150 | Tonawanda | 66 | 41,676 | 22.6 | 158.4 |
| 14075 | Hamburg | 59 | 41,937 | 20.1 | 140.7 |
| 14086 | Lancaster | 56 | 31,847 | 25.1 | 175.8 |
| 14227 | Cheektowaga | 56 | 23,426 | 34.2 | 239.1 |
| 14225 | Cheektowaga | 53 | 33,385 | 22.7 | 158.8 |
| 14224 | West Seneca | 51 | 39,889 | 18.3 | 127.9 |
| 14211 | Buffalo/Cheektowaga | 36 | 22,611 | 22.7 | 159.2 |
| 14217 | Kenmore | 34 | 23,480 | 20.7 | 144.8 |
| 14043 | Depew | 33 | 24,742 | 19.1 | 133.4 |
| 14216 | Buffalo (North) | 33 | 22,431 | 21.0 | 147.1 |
| 14223 | Tonawanda | 33 | 22,665 | 20.8 | 145.6 |
| 14127 | Orchard Park | 32 | 29,961 | 15.3 | 106.8 |
| 14072 | Grand Island | 31 | 20,374 | 21.7 | 152.2 |
| 14228 | Amherst (Getzville) | 31 | 20,857 | 21.2 | 148.6 |
| 14213 | Buffalo (West Side) | 29 | 24,465 | 16.9 | 118.5 |
| 14004 | Alden | 28 | 12,704 | 31.5 | 220.4 |
| 14220 | Buffalo (South) | 28 | 24,227 | 16.5 | 115.6 |
| 14206 | Buffalo (Kaisertown) | 27 | 20,751 | 18.6 | 130.1 |
| 14226 | Amherst (Snyder/Eggertsville) | 27 | 29,267 | 13.2 | 92.3 |
| 14207 | Buffalo (Black Rock/Riverside) | 26 | 23,552 | 15.8 | 110.4 |
| 14212 | Buffalo (Broadway)/Sloan | 24 | 10,641 | 32.2 | 225.5 |
| 14214 | Buffalo (University) | 23 | 19,775 | 16.6 | 116.3 |
| 14218 | Lackawanna | 22 | 19,039 | 16.5 | 115.6 |
| 14051 | Amherst (East) | 20 | 19,533 | 14.6 | 102.4 |
| 14201 | Buffalo (Downtown) | 20 | 11,549 | 24.7 | 173.2 |
| 14210 | Buffalo (South) | 19 | 14,694 | 18.5 | 129.3 |
| 14031 | Clarence | 18 | 9,392 | 27.4 | 191.7 |
| 14209 | Buffalo (Delaware) | 18 | 7,926 | 32.4 | 227.1 |
| 14222 | Buffalo (Elmwood Village) | 18 | 14,046 | 18.3 | 128.2 |
| 14204 | Buffalo (East) | 15 | 8,691 | 24.7 | 172.6 |
| 14208 | Buffalo (east) | 15 | 11,125 | 19.3 | 134.8 |
| 14219 | Blasdell | 15 | 11,536 | 18.6 | 130.0 |
| 14059 | Elma | 13 | 8,933 | x | x |
| 14141 | Springville | 12 | 7,728 | x | x |
| 14006 | Angola | 11 | 9,858 | x | x |
| 14085 | Hamburg (Lake View) | 11 | 7,353 | x | x |
| 14052 | Aurora | 9 | 17,329 | x | x |
| 14068 | Amherst (Getzville) | 8 | 7,150 | x | x |

All data are provisional and represent data available at the time of the report.

| | | | | | |
|------------|------------------------------------|--------------|----------------|-------------|--------------|
| 14032 | Clarence (North) | 7 | 7,989 | x | x |
| 14047 | Derby | 7 | 6,440 | x | x |
| 14057 | Eden | 7 | 8,116 | x | x |
| 14081 | Irving | 6 | 3,095 | x | x |
| 14001 | Akron | 5 | 9,464 | x | x |
| 14091 | Lawtons | 5 | 1,079 | x | x |
| 14139 | Wales | 5 | 2,125 | x | x |
| 14202 | Buffalo (Downtown) | 5 | 3,911 | x | x |
| 14203 | Buffalo | 5 | 1,618 | x | x |
| 14025 | Boston | * | 3,039 | x | x |
| 14026 | Bowmansville | * | 674 | x | x |
| 14030 | Chaffee | * | 1,807 | x | x |
| 14033 | Colden | * | 2,219 | x | x |
| 14034 | Collins | * | 2,742 | x | x |
| 14055 | East Concord | * | 1,405 | x | x |
| 14069 | Glenwood | * | 844 | x | x |
| 14070 | Gowanda | * | 6,732 | x | x |
| 14080 | Holland | * | 4,330 | x | x |
| 14102 | Marilla | * | 1,281 | x | x |
| 14111 | North Collins | * | 3,352 | x | x |
| 14170 | West Falls | * | 2,286 | x | x |
| 14231 | Buffalo | * | n/a | x | x |
| 14260-1426 | Amherst (UB) | * | 10,300 | x | x |
| | All Erie County[†] | 1,316 | 954,236 | 19.7 | 137.9 |

**Population Source: ZIP code data from U.S. Census Bureau, DP-1, General Population & Housing Characteristics

ZCTAs are an approximation of mailing ZIP codes

Buffalo and Erie County from 2010 (U.S. Census Redistricting Data, PL 94-171) Summary File

¹ Calculated by dividing total cases in past 7 days by 7, then dividing by ZIP code pop. & multiplying by 100,000

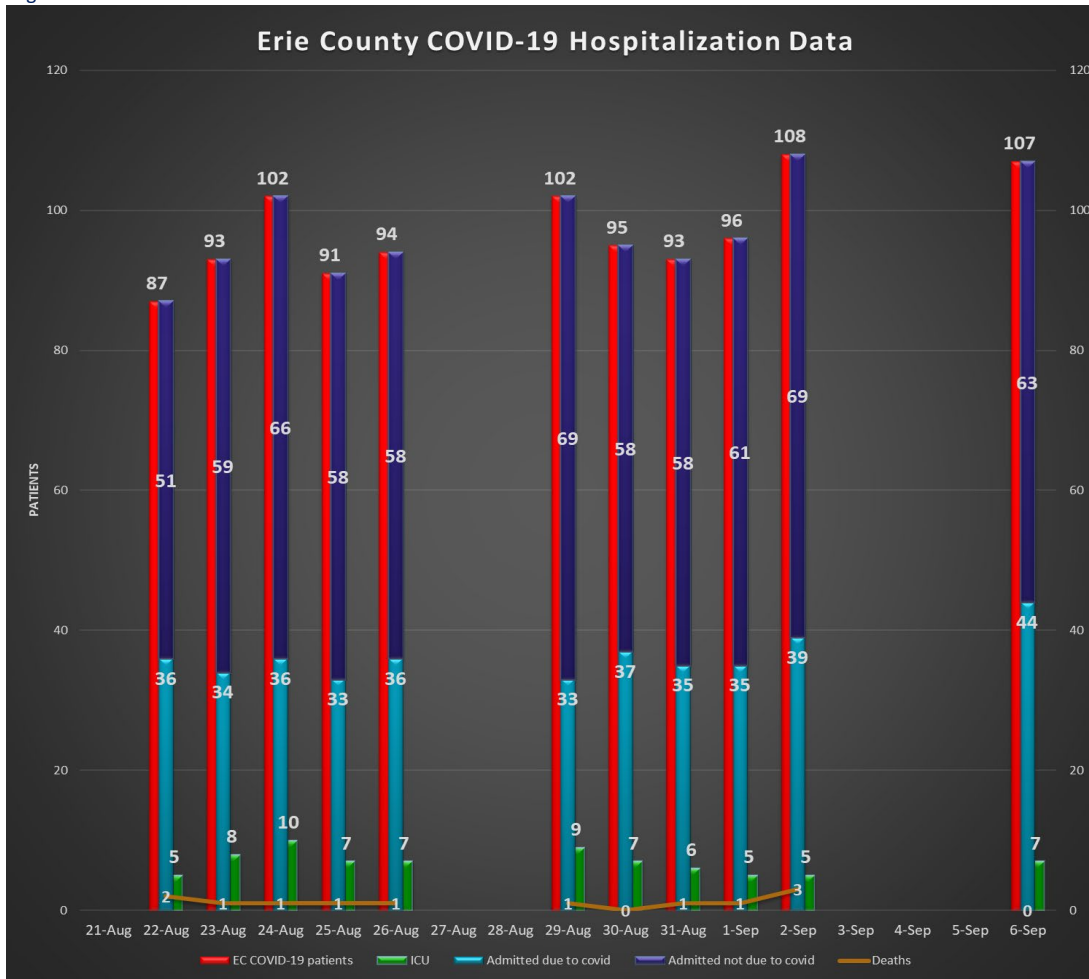
² Calculated by dividing total cases in the past 7 days by the zip code population, and multiplying by 100,000

† Total Population Value for Erie County (954,236) from 2020 U.S. Census Bureau used to calculate 'All Erie County' daily and 7-day case rates

The New York State Department of Health maintains a COVID-19 data dashboard with county-level reporting.

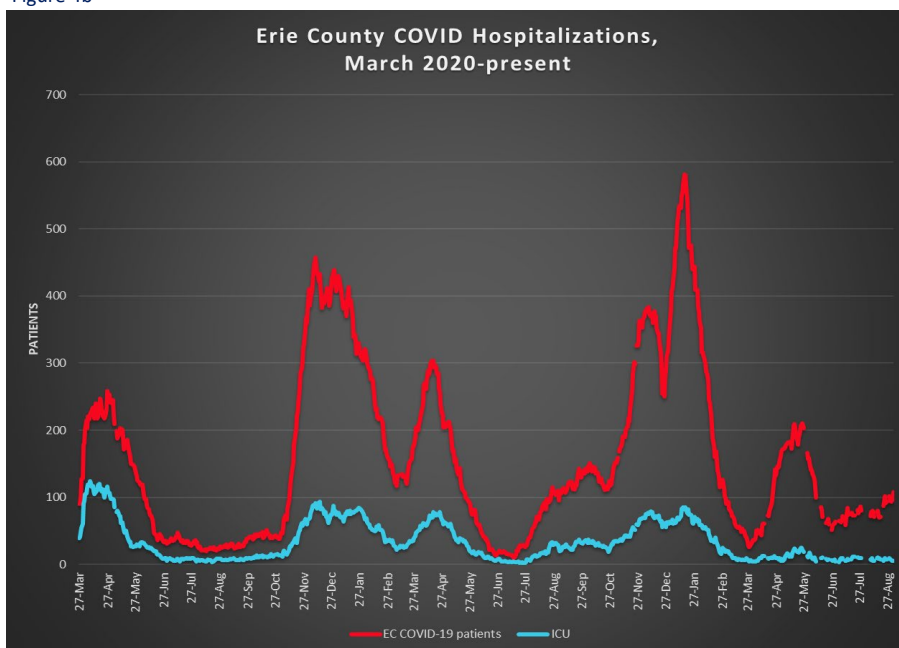
<https://coronavirus.health.ny.gov/covid-19-data-new-york>

Figure 4a



Most recent available data from NYSDOH included.

Figure 4b



Data provided by Erie County hospitals and NYSDOH. Patients may include residents from outside Erie County. See <https://coronavirus.health.ny.gov/daily-hospitalization-summary>

Section 2: COVID-19 Vaccine Information

Table 3

Erie County COVID-19 Vaccination Rates, Age & ZIP Code through August 30, 2022

| ZIP Code | City | % of 0-19 population vaccinated (with at least 1 dose) | % of 20-34 population vaccinated (with at least 1 dose) | % of 35-64 population vaccinated (with at least 1 dose) | % of 65+ population vaccinated (with at least 1 dose) | % of 20+ Population Vaccinated (with at least 1 dose) |
|----------|---------------------------|--|---|---|---|---|
| 14112 | North Evans | n/a | 31.1% | n/a | 46.7% | 40.0% |
| 14034 | Collins | 40.5% | 29.8% | 35.6% | 89.9% | 42.0% |
| 14061 | Farnham | 9.8% | 20.0% | 47.1% | 100.0% | 43.1% |
| 14070 | Gowanda | 31.3% | 31.5% | 46.2% | 74.2% | 47.8% |
| 14035 | Collins Center | 11.8% | 100.0% | 39.5% | 100.0% | 51.9% |
| 14030 | Chaffee | 20.7% | 53.5% | 53.3% | 81.3% | 59.7% |
| 14170 | West Falls | 32.1% | 74.9% | 49.1% | 100.0% | 61.0% |
| 14111 | North Collins | 32.2% | 56.5% | 61.1% | 100.0% | 66.0% |
| 14004 | Alden | 29.4% | 54.2% | 63.4% | 84.7% | 66.6% |
| 14055 | East Concord | 32.7% | 67.9% | 58.6% | 100.0% | 68.3% |
| 14025 | Boston | 37.0% | 86.7% | 63.1% | 69.7% | 68.6% |
| 14080 | Holland | 31.0% | 59.6% | 61.9% | 96.3% | 69.2% |
| 14210 | Buffalo | 38.4% | 57.6% | 74.7% | 84.6% | 70.3% |
| 14206 | Buffalo | 41.8% | 63.9% | 75.1% | 79.2% | 72.9% |
| 14001 | Akron | 38.4% | 61.2% | 66.8% | 100.0% | 73.5% |
| 14208 | Buffalo | 36.3% | 62.1% | 86.3% | 70.8% | 74.0% |
| 14222 | Buffalo (Elmwood Village) | 40.3% | 60.8% | 90.3% | 80.9% | 74.5% |
| 14219 | Blasdell | 38.3% | 61.1% | 73.9% | 96.9% | 75.1% |
| 14047 | Derby | 38.5% | 66.6% | 69.9% | 100.0% | 76.2% |
| 14091 | Lawtons | 44.3% | 45.2% | 86.5% | 90.1% | 76.4% |
| 14006 | Angola | 35.0% | 67.7% | 75.7% | 86.8% | 77.3% |
| 14141 | Springville | 33.1% | 71.4% | 70.5% | 97.3% | 77.6% |
| 14102 | Marilla | 34.3% | 52.6% | 82.4% | 95.5% | 77.6% |
| 14215 | Buffalo | 37.4% | 66.1% | 79.2% | 100.0% | 77.9% |
| 14059 | Elma | 38.6% | 70.2% | 74.1% | 89.3% | 78.0% |
| 14069 | Glenwood | 38.6% | 86.7% | 70.0% | 90.3% | 78.1% |
| 14204 | Buffalo | 38.2% | 74.1% | 76.7% | 89.1% | 78.4% |
| 14218 | Lackawanna | 31.7% | 61.8% | 80.4% | 97.5% | 78.8% |
| 14139 | South Wales | 35.8% | 93.2% | 68.8% | 100.0% | 80.1% |
| 14211 | Buffalo | 45.8% | 75.4% | 80.7% | 87.9% | 80.3% |
| 14057 | Eden | 45.6% | 87.9% | 71.1% | 100.0% | 80.7% |
| 14207 | Buffalo | 42.8% | 62.8% | 94.7% | 90.4% | 81.2% |
| 14216 | Buffalo | 50.3% | 69.3% | 84.6% | 100.0% | 81.5% |
| 14043 | Depew | 44.2% | 70.1% | 81.9% | 93.6% | 81.8% |
| 14209 | Buffalo | 37.2% | 74.4% | 84.7% | 100.0% | 83.5% |
| 14225 | Cheektowaga | 47.0% | 66.6% | 91.7% | 92.4% | 83.7% |
| 14220 | Buffalo | 44.3% | 74.2% | 84.2% | 98.3% | 83.8% |

All data are provisional and represent data available at the time of the report.

<https://covid19vaccine.health.ny.gov/vaccine-demographic-data>

| | | | | | | |
|--------------|--------------------------------|--------------|--------------|--------------|--------------|--------------|
| 14052 | East Aurora | 64.6% | 84.1% | 76.4% | 100.0% | 83.9% |
| 14150 | Tonawanda | 47.2% | 77.6% | 82.9% | 94.4% | 84.6% |
| 14031 | Clarence | 52.5% | 74.5% | 79.9% | 100.0% | 84.8% |
| 14214 | Buffalo | 46.0% | 79.4% | 87.0% | 94.4% | 85.0% |
| 14224 | West Seneca | 50.6% | 78.8% | 80.0% | 100.0% | 85.1% |
| 14217 | Kenmore | 56.6% | 88.4% | 80.2% | 93.0% | 85.3% |
| 14212 | Buffalo | 46.3% | 83.8% | 86.7% | 86.4% | 85.8% |
| 14227 | Cheektowaga | 56.5% | 73.8% | 82.8% | 100.0% | 85.8% |
| 14032 | Clarence Center | 54.7% | 100.0% | 79.2% | 100.0% | 86.2% |
| 14201 | Buffalo | 35.2% | 85.8% | 83.4% | 98.1% | 86.5% |
| 14213 | Buffalo | 37.2% | 81.6% | 90.4% | 93.6% | 87.1% |
| 14169 | Wales Center | 62.1% | n/a | 80.7% | 100.0% | 87.2% |
| 14075 | Hamburg | 54.3% | 89.3% | 80.9% | 100.0% | 87.7% |
| 14228 | Amherst (Getzville) | 57.0% | 80.1% | 91.5% | 95.1% | 87.7% |
| 14202 | Buffalo | 45.7% | 70.6% | 100.0% | 100.0% | 87.8% |
| 14072 | Grand Island | 53.6% | 91.9% | 82.9% | 100.0% | 88.7% |
| 14051 | East Amherst | 66.5% | 100.0% | 82.4% | 100.0% | 89.0% |
| 14223 | Tonawanda | 49.1% | 86.4% | 88.1% | 100.0% | 90.5% |
| 14226 | Amherst (Snyder/Eggertsville) | 57.2% | 88.0% | 87.8% | 100.0% | 90.5% |
| 14127 | Orchard Park | 60.2% | 100.0% | 84.2% | 100.0% | 91.3% |
| 14086 | Lancaster | 56.5% | 93.0% | 87.8% | 100.0% | 91.6% |
| 14026 | Bowmansville | 100.0% | 100.0% | 87.7% | 100.0% | 92.4% |
| 14221 | Amherst/Williamsville/Clarence | 66.0% | 100.0% | 88.8% | 97.1% | 93.5% |
| 14033 | Colden | 58.3% | 100.0% | 94.6% | 96.1% | 95.5% |
| 14085 | Lake View | 60.0% | 89.7% | 99.8% | 95.6% | 96.7% |
| 14068 | Getzville | 75.5% | 100.0% | 100.0% | 94.3% | 97.7% |
| 14134 | Sardinia | 48.6% | 100.0% | 100.0% | 100.0% | 100.0% |
| 14203 | Buffalo | 73.2% | 100.0% | 100.0% | 100.0% | 100.0% |
| Total | | 47.4% | 75.6% | 81.9% | 95.6% | 83.3% |

All data are provisional and represent data available at the time of the report.

<https://covid19vaccine.health.ny.gov/vaccine-demographic-data>

Section 3: COVID-19 Mortality Data

Table 4

Erie County COVID-19 Deaths by Age Group (January - December 2021)

| Age Group | Jan | Feb | Mar | Apr | May | Jun | Jul | Aug | Sep | Oct | Nov | Dec | Total |
|--------------------------|------------|------------|-----------|------------|-----------|-----------|-----------|-----------|-----------|-----------|-----------|------------|--------------|
| <40 | 3 | 4 | 0 | 4 | 2 | 0 | 1 | 1 | 0 | 3 | 4 | 3 | 25 |
| 40 to 49 | 4 | 3 | 1 | 8 | 2 | 0 | 1 | 1 | 1 | 0 | 3 | 7 | 31 |
| 50 to 59 | 8 | 11 | 5 | 7 | 5 | 4 | 1 | 6 | 4 | 11 | 12 | 17 | 91 |
| 60 to 69 | 31 | 22 | 6 | 24 | 11 | 5 | 1 | 6 | 11 | 15 | 14 | 50 | 196 |
| 70 to 79 | 60 | 34 | 16 | 30 | 21 | 4 | 7 | 10 | 15 | 14 | 24 | 46 | 281 |
| 80+ | 163 | 62 | 29 | 27 | 24 | 5 | 1 | 17 | 24 | 38 | 40 | 66 | 496 |
| Total # of Deaths | 269 | 136 | 57 | 100 | 65 | 18 | 12 | 41 | 55 | 81 | 97 | 189 | 1,120 |
| Ave. Death Age | 81 | 76 | 77 | 71 | 74 | 70 | 70 | 74 | 77 | 76 | 73 | 73 | 76 |

Table 5

Erie County COVID-19 Deaths by Age Group (January 1-August 25, 2022)

| Age Group | Jan | Feb | Mar | Apr | May | Jun | Jul | Aug | Total |
|--------------------------|------------|-----------|-----------|-----------|-----------|-----------|-----------|-----------|------------|
| <40 | 7 | 2 | 0 | 0 | 1 | 1 | 0 | 2 | 13 |
| 40 to 49 | 9 | 1 | 1 | 1 | 1 | 0 | 1 | 0 | 14 |
| 50 to 59 | 19 | 9 | 2 | 0 | 1 | 1 | 0 | 1 | 33 |
| 60 to 69 | 49 | 20 | 3 | 4 | 7 | 7 | 2 | 2 | 94 |
| 70 to 79 | 57 | 25 | 3 | 7 | 17 | 5 | 7 | 4 | 125 |
| 80+ | 90 | 40 | 10 | 17 | 37 | 12 | 10 | 7 | 223 |
| Total # of Deaths | 231 | 97 | 19 | 29 | 64 | 26 | 20 | 16 | 502 |
| Ave. Death Age | 74 | 76 | 78 | 80 | 81 | 77 | 79 | 76 | 76 |

| | |
|---------------------|--------------|
| 2020 total deaths | 1,276 |
| 2021 total deaths | 1,120 |
| 2022 deaths to date | 502 |
| Total: | 2,898 |

Table 6

Erie County COVID-19 Deaths by Residence

| Residence | Fatalities | % of Fatalities | % of Population* |
|---------------------------|--------------|-----------------|------------------|
| Buffalo | 765 | 26.4% | 29.2% |
| Erie County Excl. Buffalo | 2,133 | 73.6% | 70.8% |
| All of Erie County | 2,898 | 100.0% | 100.0% |

*Population Source: Prepared from 2020 Census Bureau