



**Erie County  
Department of  
Health**



**Public Health**  
Prevent. Promote. Protect.

## COVID-19 Data Update

Week ending September 10, 2022

All data are provisional.

1,306 new COVID-19 cases were recorded for the week ending September 10, 2022. This is nearly the same as the previous week's total (1,316 cases). These data do not include at-home tests. The weekly COVID-19 positivity rate was 13.4%, a slight increase from the previous week's COVID-19 positivity rate of 13.1%. Overall reported COVID-19 diagnostic tests were stable, with 9,765 compared to 10,033 tests during the previous week.

7-day case rate per 100,000 persons was 136.9, virtually unchanged from the 137.9 rate from the previous week. Erie County moved back to a **"medium" COVID-19 Community Level** per CDC indicators, from "low" the previous week. And, Erie County remains in "high" transmission per CDC community transmission metrics.

Buffalo city COVID-19 cases comprised 36% of new COVID-19 cases this past week. (Buffalo city population is 29.2% of all Erie County residents).

Erie County COVID-19 Wastewater Surveillance Data: See Figure 3. COVID-19 wastewater surveillance data through September 8, 2022 showed SARS-CoV-2 viral particles in the top 60-79% of samples collected since 12/1/21 within the City of Tonawanda, Amherst and Bird Island sewershed areas. Kenmore-Tonawanda and Big Sister Creek were in the 40-59% category; Lackawanna and Southtowns sewersheds were in the 20-39% category. Sewersheds for Amherst and Kenmore-Tonawanda showed a 100-999% increase in detected viral particles over the past two weeks; Big Sister Creek, Bird Island, City of Tonawanda and Southtowns showed a 10-99% increase; and, Lackawanna showed a 99-10% decrease. See <https://www.erie.gov/covid19-wastewater/>

Erie County COVID-19 Hospitalization Data: See Figures 4a and 4b. NYSDOH publishes updated hospitalization data by region at <https://coronavirus.health.ny.gov/daily-hospitalization-summary>.

Erie County COVID-19 Vaccination Data: See Section 2. NYSDOH updates vaccine data daily. Demographic data: <https://coronavirus.health.ny.gov/demographic-vaccination-data>.

Erie County COVID-19 Mortality Data: Mortality data are updated through August 25, 2022 based on data available to ECDOH. More recent data will be reported when available. NYSDOH reports COVID-19 mortality data at <https://coronavirus.health.ny.gov/fatalities-0>. See Section 3.

### CONTENTS

#### **Section 1: COVID-19 Case Data**

Figure 1: Confirmed COVID-19 Cases by Age Group & Gender (to date)	Page 1
Figure 2: Confirmed COVID-19 Cases by Age Group and Gender (latest week)	Page 1
Table 1: New COVID-19 Cases in the Past Seven Days	Page 1
Figure 3: Erie County COVID-19 Wastewater Surveillance	Page 2
Table 2: Confirmed COVID-19 Cases by ZIP Code	Page 3
Figures 4a and 4b: Erie County COVID-19 Hospitalizations	Page 5

#### **Section 2: COVID-19 Vaccination Data**

Table 3: Erie County COVID-19 Vaccination Rates by Age and ZIP Code	Page 6
---	--------

#### **Section 3: COVID-19 Mortality Data**

Tables 4 & 5: Erie County COVID-19 Deaths By Age Group	Page 8
Table 6: Erie County COVID-19 Deaths by Residence	Page 8

## Section 1: Confirmed COVID-19 Cases

Figure 1

**Confirmed COVID-19 Cases by Age Group and Gender (March 2020-present)**

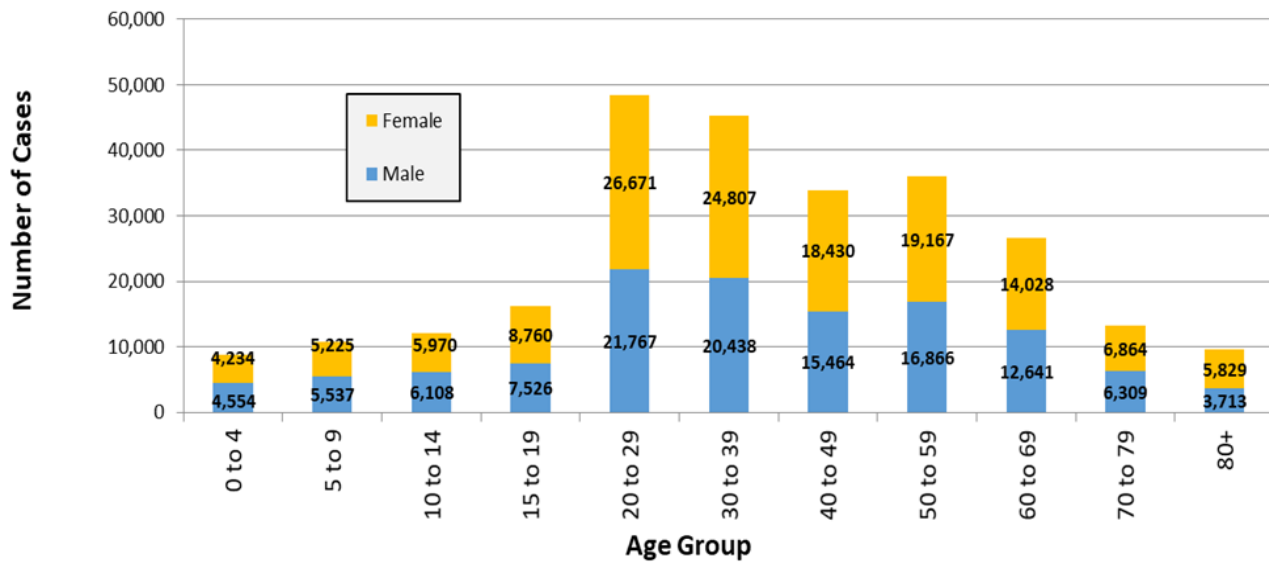


Figure 2

**Confirmed COVID-19 Cases by Age Group (September 4-10, 2022)**

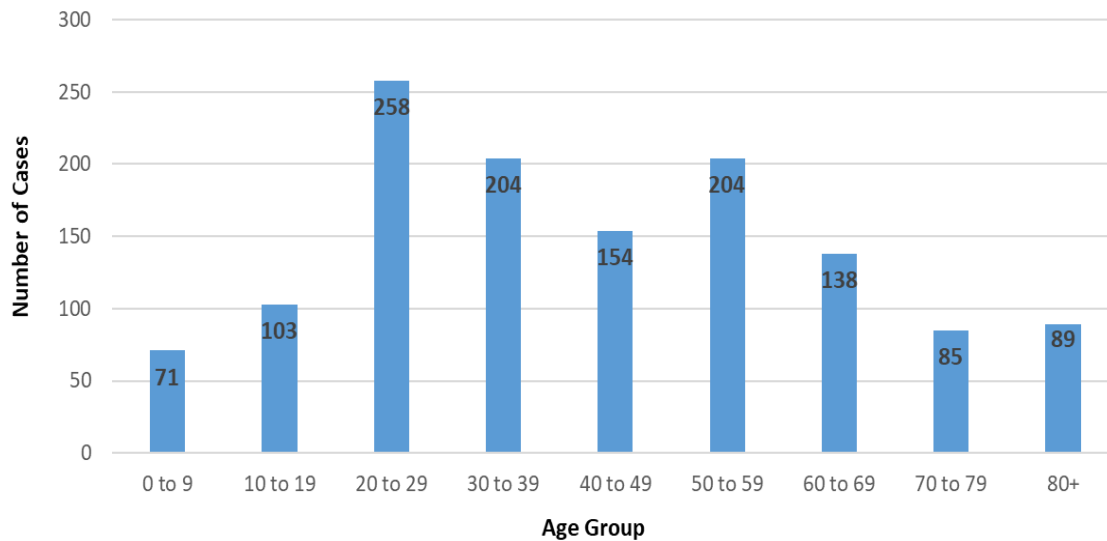


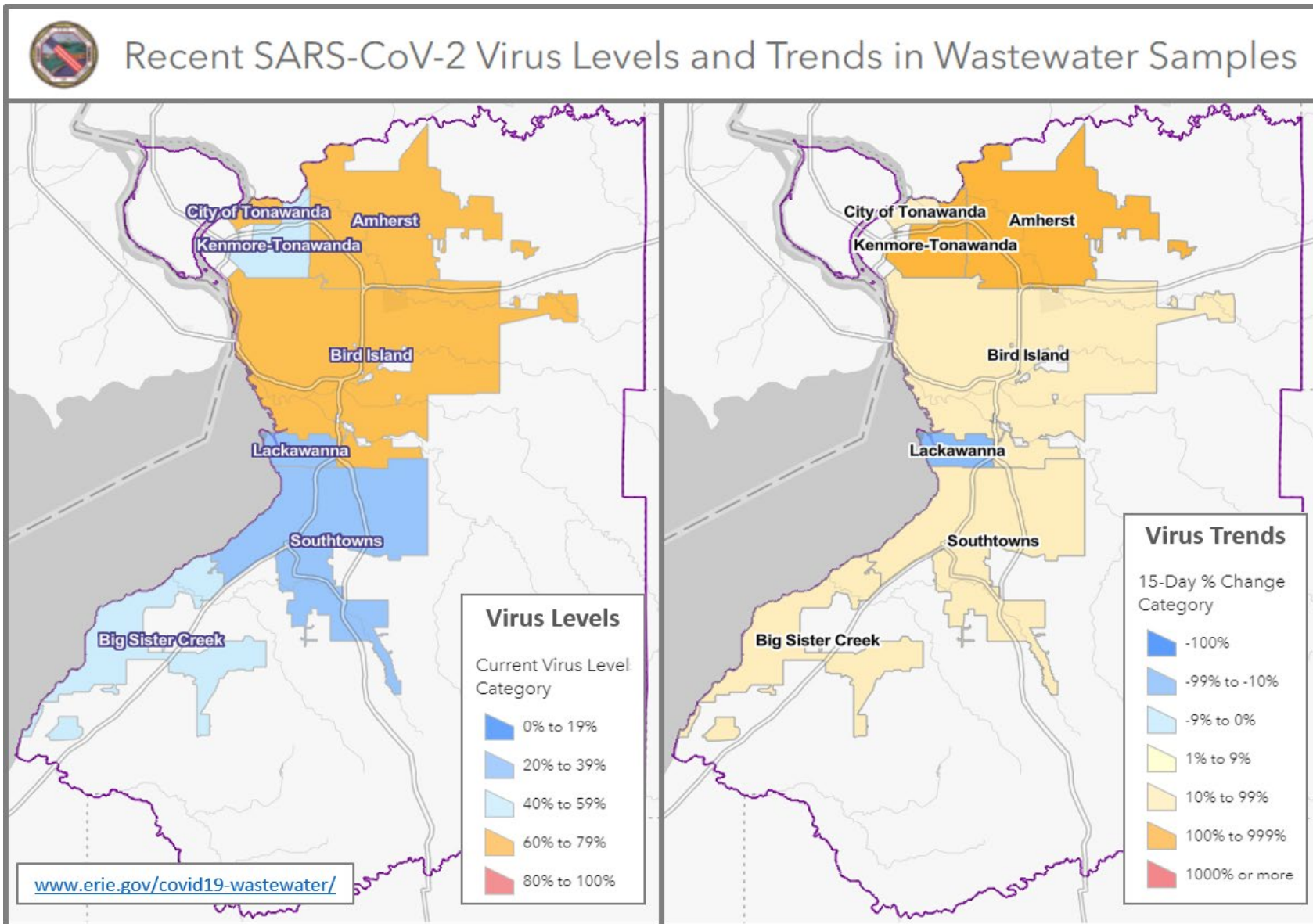
Table 1

**New Cases in Past Seven Days, Past Six Weeks**

Week Ending	New Cases in Past 7 Days	Total New Cases in the Past Seven Days per 100,000 Persons*
8/6/2022	1,261	132.1
8/13/2022	1,213	127.1
8/20/2022	1,301	136.3
8/27/2022	1,454	152.4
9/3/2022	1,316	137.9
9/10/2022	1,306	136.9

This metric shows trends over time.  
\*Population Source: 2020 U.S. Census Bureau

Figure 3: Erie County COVID-19 Wastewater Surveillance



Charts as of September 8, 2022

All data are provisional and represent data available at the time of the report.

Table 2

**Confirmed COVID-19 Cases by ZIP Code**

ZIP Code	City	Cases	Zip Code Population**	New Daily Cases per 100,000 Persons on 7-Day Rolling Average <sup>1</sup>	Total New Cases per 100,000 Persons in the Past 7 Days <sup>2</sup>
14221	Amherst/Williamsville/Clarend	87	53,555	23.2	162.4
14215	Buffalo (East)	69	39,999	24.6	172.5
14075	Hamburg	68	41,937	23.2	162.1
14150	Tonawanda	66	41,676	22.6	158.4
14224	West Seneca	53	39,889	19.0	132.9
14211	Buffalo/Cheektowaga	46	22,611	29.1	203.4
14226	Amherst (Snyder/Eggertsville)	44	29,267	21.5	150.3
14220	Buffalo (South)	43	24,227	25.4	177.5
14225	Cheektowaga	42	33,385	18.0	125.8
14127	Orchard Park	38	29,961	18.1	126.8
14213	Buffalo (West Side)	36	24,465	21.0	147.1
14223	Tonawanda	36	22,665	22.7	158.8
14217	Kenmore	35	23,480	21.3	149.1
14086	Lancaster	34	31,847	15.3	106.8
14218	Lackawanna	34	19,039	25.5	178.6
14214	Buffalo (University)	33	19,775	23.8	166.9
14212	Buffalo (Broadway)/Sloan	32	10,641	43.0	300.7
14227	Cheektowaga	29	23,426	17.7	123.8
14216	Buffalo (North)	27	22,431	17.2	120.4
14209	Buffalo (Delaware)	26	7,926	46.9	328.0
14051	Amherst (East)	25	19,533	18.3	128.0
14207	Buffalo (Black Rock/Riverside)	25	23,552	15.2	106.1
14043	Depew	24	24,742	13.9	97.0
14072	Grand Island	24	20,374	16.8	117.8
14228	Amherst (Getzville)	24	20,857	16.4	115.1
14219	Blasdell	23	11,536	28.5	199.4
14206	Buffalo (Kaisertown)	22	20,751	15.1	106.0
14208	Buffalo (east)	22	11,125	28.3	197.8
14210	Buffalo (South)	19	14,694	18.5	129.3
14201	Buffalo (Downtown)	17	11,549	21.0	147.2
14085	Hamburg (Lake View)	16	7,353	31.1	217.6
14006	Angola	14	9,858	x	x
14204	Buffalo (East)	14	8,691	x	x
14057	Eden	13	8,116	x	x
14047	Derby	12	6,440	x	x
14052	Aurora	12	17,329	x	x
14222	Buffalo (Elmwood Village)	12	14,046	x	x
14004	Alden	11	12,704	x	x
14141	Springville	11	7,728	x	x
14260-1426	Amherst (UB)	11	10,300	x	x

All data are provisional and represent data available at the time of the report.

14001	Akron	9	9,464	x	x
14031	Clarence	9	9,392	x	x
14202	Buffalo (Downtown)	9	3,911	x	x
14068	Amherst (Getzville)	8	7,150	x	x
14203	Buffalo	7	1,618	x	x
14032	Clarence (North)	6	7,989	x	x
14025	Boston	*	3,039	x	x
14026	Bowmansville	*	674	x	x
14030	Chaffee	*	1,807	x	x
14033	Colden	*	2,219	x	x
14034	Collins	*	2,742	x	x
14055	East Concord	*	1,405	x	x
14059	Elma	*	8,933	x	x
14069	Glenwood	*	844	x	x
14070	Gowanda	*	6,732	x	x
14080	Holland	*	4,330	x	x
14081	Irving	*	3,095	x	x
14091	Lawtons	*	1,079	x	x
14102	Marilla	*	1,281	x	x
14111	North Collins	*	3,352	x	x
14139	Wales	*	2,125	x	x
14170	West Falls	*	2,286	x	x
14231	Buffalo	*	n/a	x	x
	<b>All Erie County<sup>†</sup></b>	<b>1,306</b>	<b>954,236</b>	<b>19.6</b>	<b>136.9</b>

*\*\*Population Source: ZIP code data from U.S. Census Bureau, DP-1, General Population & Housing Characteristics*

*ZCTAs are an approximation of mailing ZIP codes*

*Buffalo and Erie County from 2010 (U.S. Census Redistricting Data, PL 94-171) Summary File*

<sup>1</sup> *Calculated by dividing total cases in past 7 days by 7, then dividing by ZIP code pop. & multiplying by 100,000*

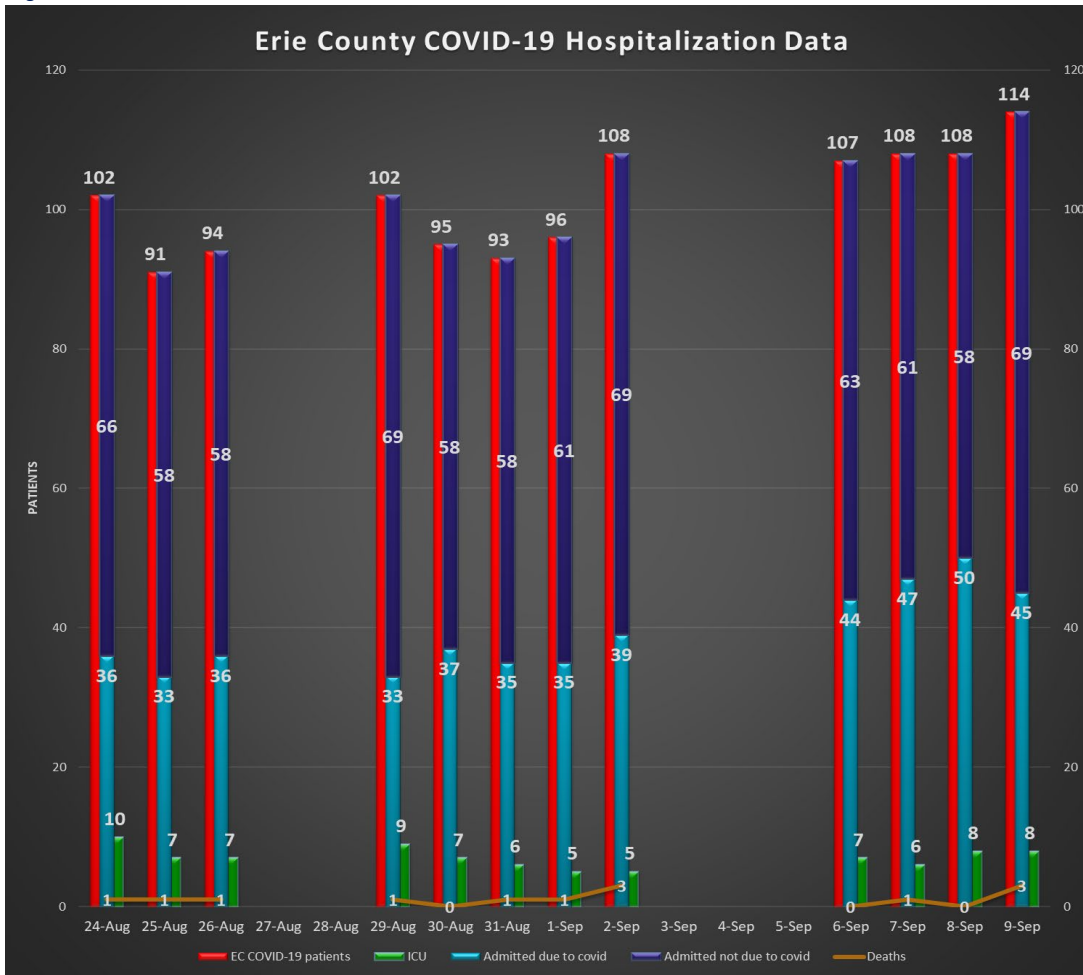
<sup>2</sup> *Calculated by dividing total cases in the past 7 days by the zip code population, and multiplying by 100,000*

<sup>†</sup> *Total Population Value for Erie County (954,236) from 2020 U.S. Census Bureau used to calculate 'All Erie County' daily and 7-day case rates*

The New York State Department of Health maintains a COVID-19 data dashboard with county-level reporting.

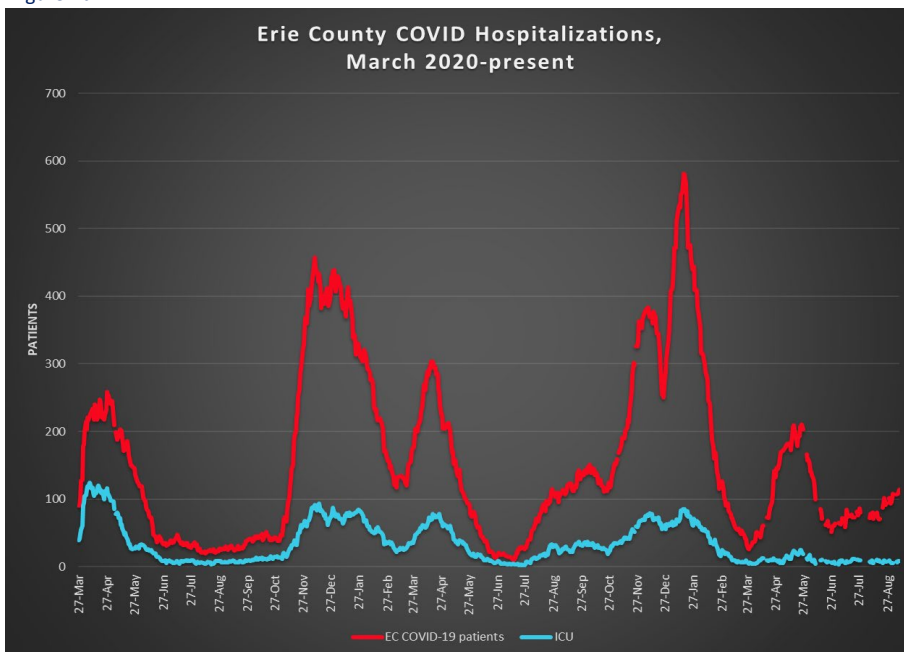
<https://coronavirus.health.ny.gov/covid-19-data-new-york>

Figure 4a



Most recent available data from NYSDOH included.

Figure 4b



Data provided by Erie County hospitals and NYSDOH. Patients may include residents from outside Erie County. See <https://coronavirus.health.ny.gov/daily-hospitalization-summary>



**Section 2: COVID-19 Vaccine Information**

Table 3

**Erie County COVID-19 Vaccination Rates, Age & ZIP Code through August 30, 2022**

ZIP Code	City	% of 0-19 population vaccinated (with at least 1 dose)	% of 20-34 population vaccinated (with at least 1 dose)	% of 35-64 population vaccinated (with at least 1 dose)	% of 65+ population vaccinated (with at least 1 dose)	% of 20+ Population Vaccinated (with at least 1 dose)
14112	North Evans	n/a	31.1%	n/a	46.7%	40.0%
14034	Collins	40.5%	29.8%	35.5%	89.4%	41.8%
14061	Farnham	9.8%	20.0%	47.7%	100.0%	43.5%
14070	Gowanda	31.6%	31.5%	46.2%	74.2%	47.8%
14035	Collins Center	11.8%	100.0%	39.5%	100.0%	51.9%
14030	Chaffee	20.7%	53.5%	53.4%	81.0%	59.7%
14170	West Falls	32.2%	74.9%	49.1%	100.0%	61.0%
14111	North Collins	32.2%	56.5%	61.1%	100.0%	66.0%
14004	Alden	29.5%	54.2%	63.4%	84.8%	66.6%
14055	East Concord	32.7%	67.9%	58.9%	100.0%	68.5%
14025	Boston	37.4%	86.5%	63.1%	70.0%	68.7%
14080	Holland	31.0%	59.6%	61.8%	96.5%	69.2%
14210	Buffalo	38.3%	57.6%	74.7%	84.5%	70.3%
14206	Buffalo	41.8%	64.0%	75.1%	79.3%	72.9%
14001	Akron	38.5%	61.2%	66.8%	100.0%	73.5%
14208	Buffalo	36.5%	62.0%	86.4%	70.9%	74.0%
14222	Buffalo (Elmwood Village)	40.5%	60.9%	90.3%	80.8%	74.5%
14219	Blasdell	38.4%	61.1%	73.9%	96.9%	75.2%
14047	Derby	38.8%	66.8%	70.0%	100.0%	76.2%
14091	Lawtons	44.3%	45.2%	86.5%	90.1%	76.4%
14006	Angola	35.1%	67.7%	75.7%	86.7%	77.3%
14141	Springville	33.3%	71.6%	70.5%	97.2%	77.6%
14102	Marilla	34.3%	52.6%	82.4%	96.0%	77.7%
14059	Elma	38.7%	70.1%	74.1%	89.0%	77.9%
14215	Buffalo	37.5%	66.1%	79.2%	100.0%	77.9%
14069	Glenwood	38.6%	86.7%	70.0%	90.3%	78.1%
14204	Buffalo	38.1%	74.4%	76.5%	88.9%	78.4%
14218	Lackawanna	31.7%	62.1%	80.6%	97.5%	78.9%
14139	South Wales	36.0%	94.0%	69.0%	100.0%	80.3%
14211	Buffalo	45.9%	75.6%	80.6%	87.6%	80.3%
14057	Eden	45.8%	87.8%	71.2%	100.0%	80.8%
14207	Buffalo	43.0%	62.9%	94.7%	90.5%	81.3%
14216	Buffalo	50.5%	69.4%	84.6%	100.0%	81.5%
14043	Depew	44.3%	70.1%	81.9%	93.6%	81.7%
14209	Buffalo	37.6%	74.5%	84.7%	100.0%	83.5%
14225	Cheektowaga	47.3%	66.6%	91.7%	92.3%	83.7%
14220	Buffalo	44.5%	74.2%	84.1%	98.3%	83.7%

All data are provisional and represent data available at the time of the report.

<https://covid19vaccine.health.ny.gov/vaccine-demographic-data>

14052	East Aurora	64.7%	84.1%	76.5%	100.0%	83.9%
14150	Tonawanda	47.5%	77.6%	83.0%	94.4%	84.6%
14031	Clarence	52.8%	74.5%	80.0%	100.0%	84.8%
14214	Buffalo	46.3%	79.4%	87.0%	94.5%	85.0%
14224	West Seneca	50.7%	78.9%	80.1%	100.0%	85.2%
14217	Kenmore	56.5%	88.4%	80.2%	93.1%	85.4%
14227	Cheektowaga	56.7%	73.8%	82.8%	100.0%	85.8%
14212	Buffalo	46.4%	83.9%	86.7%	86.4%	85.8%
14169	Wales Center	62.1%	n/a	78.9%	100.0%	86.0%
14032	Clarence Center	54.8%	100.0%	79.2%	100.0%	86.2%
14201	Buffalo	35.4%	85.9%	83.5%	98.5%	86.6%
14213	Buffalo	37.3%	81.7%	90.4%	93.4%	87.1%
14075	Hamburg	54.5%	89.3%	81.0%	100.0%	87.7%
14228	Amherst (Getzville)	57.0%	80.1%	91.6%	95.2%	87.8%
14202	Buffalo	45.7%	70.9%	100.0%	100.0%	87.9%
14072	Grand Island	53.8%	92.0%	83.0%	100.0%	88.7%
14051	East Amherst	66.7%	100.0%	82.4%	100.0%	89.1%
14223	Tonawanda	49.5%	86.5%	88.1%	100.0%	90.5%
14226	Amherst (Snyder/Eggertsville)	57.4%	88.2%	87.9%	100.0%	90.6%
14127	Orchard Park	60.4%	100.0%	84.2%	100.0%	91.3%
14086	Lancaster	56.6%	93.0%	87.7%	100.0%	91.5%
14026	Bowmansville	100.0%	100.0%	88.0%	100.0%	92.6%
14221	Amherst/Williamsville/Clare	66.1%	100.0%	88.8%	97.2%	93.6%
14033	Colden	58.3%	100.0%	94.0%	96.3%	95.3%
14085	Lake View	60.1%	89.8%	99.8%	95.5%	96.7%
14068	Getzville	75.7%	100.0%	100.0%	94.1%	97.6%
14134	Sardinia	48.6%	100.0%	100.0%	100.0%	100.0%
14203	Buffalo	72.6%	100.0%	100.0%	100.0%	100.0%
<b>Total</b>		<b>47.5%</b>	<b>75.7%</b>	<b>81.9%</b>	<b>95.6%</b>	<b>83.4%</b>

All data are provisional and represent data available at the time of the report.

<https://covid19vaccine.health.ny.gov/vaccine-demographic-data>



## Section 3: COVID-19 Mortality Data

Table 4

### Erie County COVID-19 Deaths by Age Group (January - December 2021)

Age Group	Jan	Feb	Mar	Apr	May	Jun	Jul	Aug	Sep	Oct	Nov	Dec	Total
<40	3	4	0	4	2	0	1	1	0	3	4	3	25
40 to 49	4	3	1	8	2	0	1	1	1	0	3	7	31
50 to 59	8	11	5	7	5	4	1	6	4	11	12	17	91
60 to 69	31	22	6	24	11	5	1	6	11	15	14	50	196
70 to 79	60	34	16	30	21	4	7	10	15	14	24	46	281
80+	163	62	29	27	24	5	1	17	24	38	40	66	496
<b>Total # of Deaths</b>	<b>269</b>	<b>136</b>	<b>57</b>	<b>100</b>	<b>65</b>	<b>18</b>	<b>12</b>	<b>41</b>	<b>55</b>	<b>81</b>	<b>97</b>	<b>189</b>	<b>1,120</b>
<b>Ave. Death Age</b>	<b>81</b>	<b>76</b>	<b>77</b>	<b>71</b>	<b>74</b>	<b>70</b>	<b>70</b>	<b>74</b>	<b>77</b>	<b>76</b>	<b>73</b>	<b>73</b>	<b>76</b>

Table 5

### Erie County COVID-19 Deaths by Age Group (January 1-August 25, 2022)

Age Group	Jan	Feb	Mar	Apr	May	Jun	Jul	Aug	Total
<40	7	2	0	0	1	1	0	2	13
40 to 49	9	1	1	1	1	0	1	0	14
50 to 59	19	9	2	0	1	1	0	1	33
60 to 69	49	20	3	4	7	7	2	2	94
70 to 79	57	25	3	7	17	5	7	4	125
80+	90	40	10	17	37	12	10	7	223
<b>Total # of Deaths</b>	<b>231</b>	<b>97</b>	<b>19</b>	<b>29</b>	<b>64</b>	<b>26</b>	<b>20</b>	<b>16</b>	<b>502</b>
<b>Ave. Death Age</b>	<b>74</b>	<b>76</b>	<b>78</b>	<b>80</b>	<b>81</b>	<b>77</b>	<b>79</b>	<b>76</b>	<b>76</b>

2020 total deaths	1,276
2021 total deaths	1,120
2022 deaths to date	502
<b>Total:</b>	<b>2,898</b>

Table 6

### Erie County COVID-19 Deaths by Residence

Residence	Fatalities	% of Fatalities	% of Population*
Buffalo	765	26.4%	29.2%
Erie County Excl. Buffalo	2,133	73.6%	70.8%
<b>All of Erie County</b>	<b>2,898</b>	<b>100.0%</b>	<b>100.0%</b>

\*Population Source: Prepared from 2020 Census Bureau

Most recent mortality data provided (through August 25, 2022).