



**Erie County
Department of
Health**



Public Health
Prevent. Promote. Protect.

COVID-19 Data Update

Week ending September 17, 2022

All data are provisional.

1,569 new COVID-19 cases were recorded for the week ending September 17, 2022. This is an increase of 20% from the previous week's total (1,306 cases). These data do not include at-home tests. The weekly COVID-19 positivity rate was 13.5%, virtually the same as the previous week's rate of 13.4%. Overall reported COVID-19 diagnostic tests increased to 11,600 last week from 9,765 during the previous week.

7-day case rate per 100,000 persons was 164.4, up from 136.9 during the previous week. Erie County remained in a **"medium" COVID-19 Community Level** per CDC indicators. And, Erie County remains in "high" transmission per CDC community transmission metrics.

Buffalo city COVID-19 cases comprised 36.9% of new COVID-19 cases this past week. (Buffalo city population is 29.2% of all Erie County residents).

Erie County COVID-19 Wastewater Surveillance Data: See Figure 3. COVID-19 wastewater surveillance data through September 15, 2022 showed SARS-CoV-2 viral particles in the top 80-100% of samples collected since 12/1/21 within the Bird Island and Kenmore-Tonawanda sewershed areas. City of Tonawanda, Amherst, Big Sister Creek and Southtowns were in the 60-79% category; Lackawanna was in the 40-59% category. Sewersheds for City of Tonawanda (9/8), Amherst, Kenmore-Tonawanda, Southtowns (9/12) and Bird Island (9/15) showed a 10-99% increase in detected viral particles over the past two weeks; Lackawanna and Big Sister Creek showed a 100-999% increase. See <https://www.erie.gov/covid19-wastewater/>

Erie County COVID-19 Hospitalization Data: See Figures 4a and 4b. NYSDOH publishes updated hospitalization data by region at <https://coronavirus.health.ny.gov/daily-hospitalization-summary>.

Erie County COVID-19 Vaccination Data: See Section 2. NYSDOH updates vaccine data daily. Demographic data: <https://coronavirus.health.ny.gov/demographic-vaccination-data>.

Erie County COVID-19 Mortality Data: Mortality data are updated through August 25, 2022 based on data available to ECDOH. More recent data will be reported when available. NYSDOH reports COVID-19 mortality data at <https://coronavirus.health.ny.gov/fatalities-0>. See Section 3.

CONTENTS

Section 1: COVID-19 Case Data

Figure 1: Confirmed COVID-19 Cases by Age Group & Gender (to date)	Page 1
Figure 2: Confirmed COVID-19 Cases by Age Group and Gender (latest week)	Page 1
Table 1: New COVID-19 Cases in the Past Seven Days	Page 1
Figure 3: Erie County COVID-19 Wastewater Surveillance	Page 2
Table 2: Confirmed COVID-19 Cases by ZIP Code	Page 3
Figures 4a and 4b: Erie County COVID-19 Hospitalizations	Page 5

Section 2: COVID-19 Vaccination Data

Table 3: Erie County COVID-19 Vaccination Rates by Age and ZIP Code	Page 6
---	--------

Section 3: COVID-19 Mortality Data

Tables 4 & 5: Erie County COVID-19 Deaths By Age Group	Page 8
Table 6: Erie County COVID-19 Deaths by Residence	Page 8

Section 1: Confirmed COVID-19 Cases

Figure 1

Confirmed COVID-19 Cases by Age Group and Gender (March 2020-present)

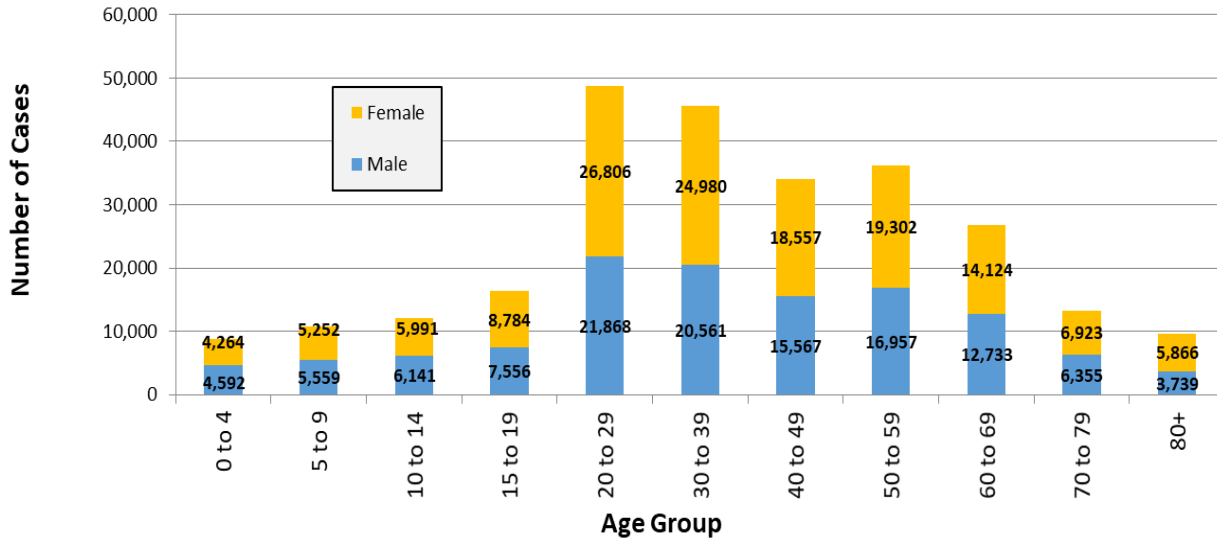
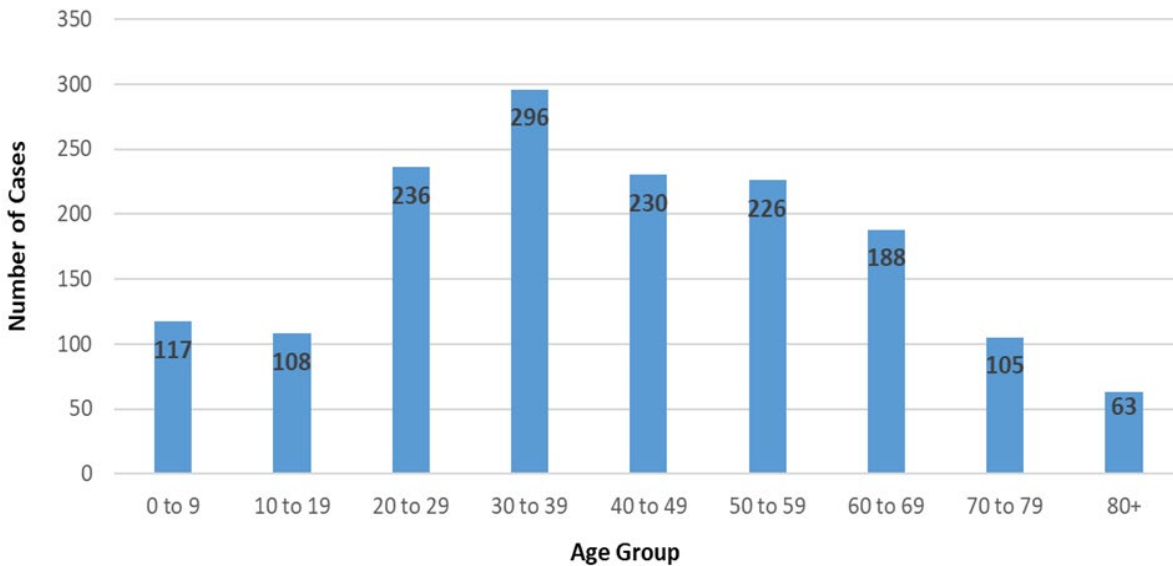


Figure 2

Confirmed COVID-19 Cases by Age Group (September 11-17, 2022)

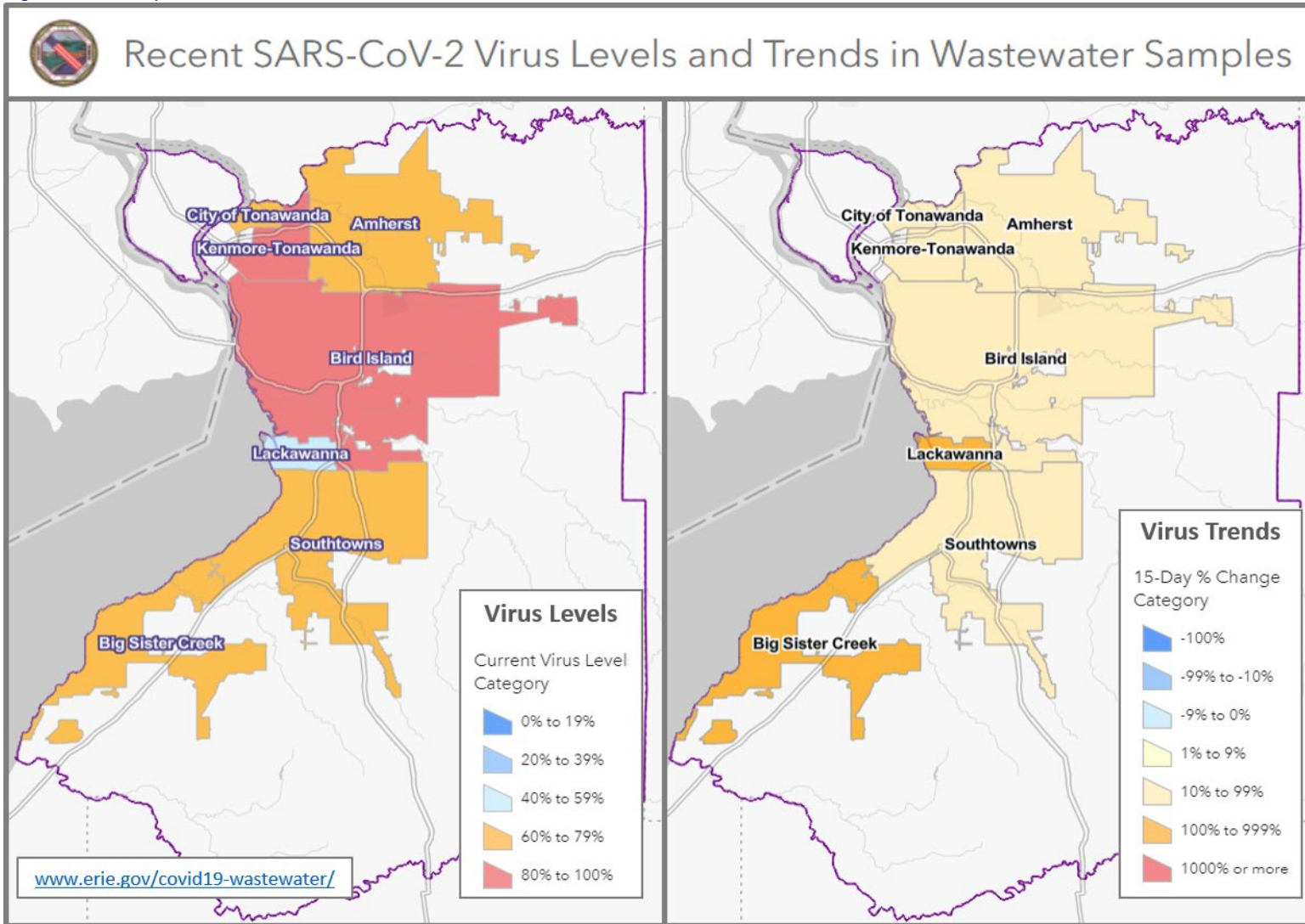


New Cases in Past Seven Days, Past Six Weeks

Week Ending	New Cases in Past 7 Days	Total New Cases in the Past Seven Days per 100,000 Persons*
8/13/2022	1,213	127.1
8/20/2022	1,301	136.3
8/27/2022	1,454	152.4
9/3/2022	1,316	137.9
9/10/2022	1,306	136.9
9/17/2022	1,569	164.4

This metric shows trends over time.
*Population Source: 2020 U.S. Census Bureau

Figure 3: Erie County COVID-19 Wastewater Surveillance



Charts as of September 15, 2022

All data are provisional and represent data available at the time of the report.

Table 2

Confirmed COVID-19 Cases by ZIP Code

ZIP Code	City	Cases	Zip Code Population**	New Daily Cases per 100,000 Persons on 7-Day Rolling Average ¹	Total New Cases per 100,000 Persons in the Past 7 Days ²
14221	Amherst/Williamsville/Clarend	104	53,555	27.7	194.2
14215	Buffalo (East)	96	39,999	34.3	240.0
14225	Cheektowaga	96	33,385	41.1	287.6
14150	Tonawanda	83	41,676	28.5	199.2
14075	Hamburg	67	41,937	22.8	159.8
14224	West Seneca	64	39,889	22.9	160.4
14226	Amherst (Snyder/Eggertsville)	49	29,267	23.9	167.4
14207	Buffalo (Black Rock/Riverside)	48	23,552	29.1	203.8
14211	Buffalo/Cheektowaga	47	22,611	29.7	207.9
14086	Lancaster	43	31,847	19.3	135.0
14206	Buffalo (Kaisertown)	43	20,751	29.6	207.2
14216	Buffalo (North)	43	22,431	27.4	191.7
14220	Buffalo (South)	40	24,227	23.6	165.1
14043	Depew	39	24,742	22.5	157.6
14127	Orchard Park	39	29,961	18.6	130.2
14213	Buffalo (West Side)	39	24,465	22.8	159.4
14227	Cheektowaga	37	23,426	22.6	157.9
14218	Lackawanna	36	19,039	27.0	189.1
14217	Kenmore	34	23,480	20.7	144.8
14051	Amherst (East)	32	19,533	23.4	163.8
14072	Grand Island	31	20,374	21.7	152.2
14228	Amherst (Getzville)	31	20,857	21.2	148.6
14210	Buffalo (South)	30	14,694	29.2	204.2
14223	Tonawanda	29	22,665	18.3	128.0
14201	Buffalo (Downtown)	25	11,549	30.9	216.5
14214	Buffalo (University)	24	19,775	17.3	121.4
14219	Blasdell	24	11,536	29.7	208.0
14212	Buffalo (Broadway)/Sloan	21	10,641	28.2	197.3
14141	Springville	18	7,728	33.3	232.9
14208	Buffalo (east)	18	11,125	23.1	161.8
14204	Buffalo (East)	17	8,691	27.9	195.6
14006	Angola	16	9,858	23.2	162.3
14057	Eden	14	8,116	x	x
14203	Buffalo	13	1,618	x	x
14059	Elma	12	8,933	x	x
14001	Akron	11	9,464	x	x
14070	Gowanda	11	6,732	x	x
14081	Irving	11	3,095	x	x
14202	Buffalo (Downtown)	11	3,911	x	x
14209	Buffalo (Delaware)	11	7,926	x	x

All data are provisional and represent data available at the time of the report.

14222	Buffalo (Elmwood Village)	11	14,046	x	x
14033	Colden	10	2,219	x	x
14031	Clarence	9	9,392	x	x
14047	Derby	9	6,440	x	x
14052	Aurora	8	17,329	x	x
14068	Amherst (Getzville)	8	7,150	x	x
14085	Hamburg (Lake View)	8	7,353	x	x
14004	Alden	7	12,704	x	x
14111	North Collins	6	3,352	x	x
14032	Clarence (North)	5	7,989	x	x
14034	Collins	5	2,742	x	x
14139	Wales	5	2,125	x	x
14025	Boston	*	3,039	x	x
14026	Bowmansville	*	674	x	x
14030	Chaffee	*	1,807	x	x
14055	East Concord	*	1,405	x	x
14069	Glenwood	*	844	x	x
14080	Holland	*	4,330	x	x
14091	Lawtons	*	1,079	x	x
14102	Marilla	*	1,281	x	x
14170	West Falls	*	2,286	x	x
14231	Buffalo	*	n/a	x	x
14260-1426	Amherst (UB)	*	10,300	x	x
	All Erie County[†]	1,569	954,236	23.5	164.4

**Population Source: ZIP code data from U.S. Census Bureau, DP-1, General Population & Housing Characteristics

ZCTAs are an approximation of mailing ZIP codes

Buffalo and Erie County from 2010 (U.S. Census Redistricting Data, PL 94-171) Summary File

¹ Calculated by dividing total cases in past 7 days by 7, then dividing by ZIP code pop. & multiplying by 100,000

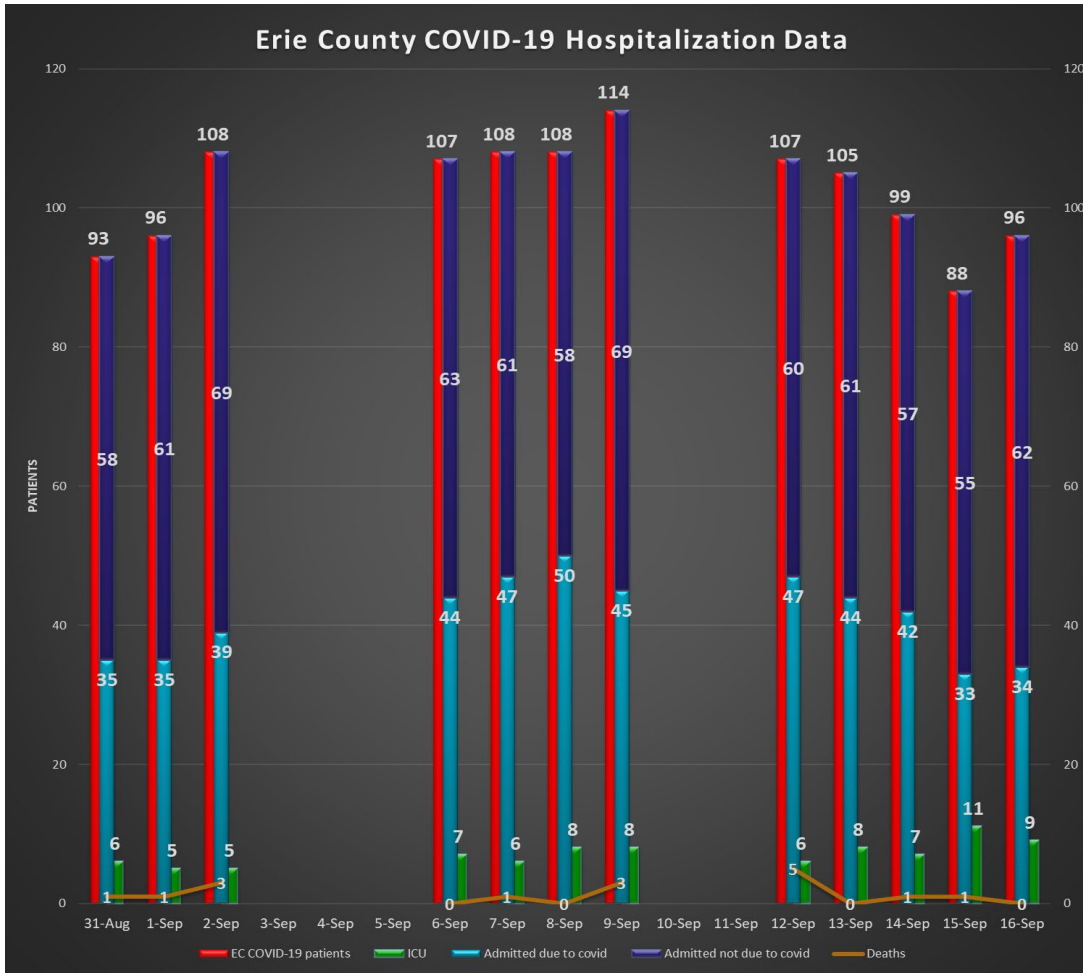
² Calculated by dividing total cases in the past 7 days by the zip code population, and multiplying by 100,000

† Total Population Value for Erie County (954,236) from 2020 U.S. Census Bureau used to calculate 'All Erie County' daily and 7-day case rates

The New York State Department of Health maintains a COVID-19 data dashboard with county-level reporting.

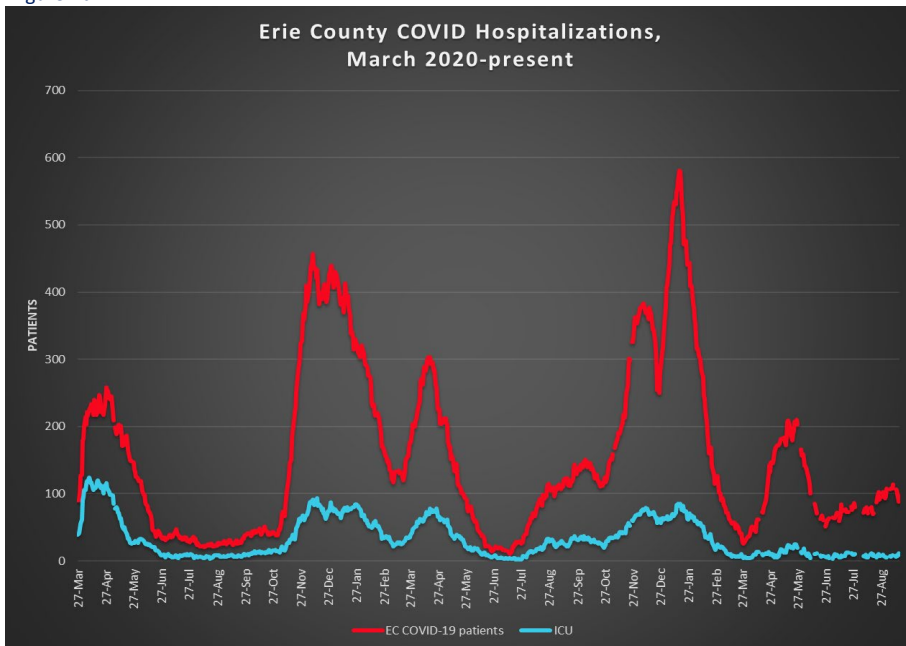
<https://coronavirus.health.ny.gov/covid-19-data-new-york>

Figure 4a



Most recent available data from NYSDOH included.

Figure 4b



Data provided by Erie County hospitals and NYSDOH. Patients may include residents from outside Erie County. See <https://coronavirus.health.ny.gov/daily-hospitalization-summary>

Section 2: COVID-19 Vaccine Information

Table 3

Erie County COVID-19 Vaccination Rates, Age & ZIP Code through August 30, 2022

ZIP Code	City	% of 0-19 population vaccinated (with at least 1 dose)	% of 20-34 population vaccinated (with at least 1 dose)	% of 35-64 population vaccinated (with at least 1 dose)	% of 65+ population vaccinated (with at least 1 dose)	% of 20+ Population Vaccinated (with at least 1 dose)
14112	North Evans	n/a	31.1%	n/a	46.7%	40.0%
14034	Collins	41.7%	30.0%	35.5%	88.8%	41.8%
14061	Farnham	9.8%	20.0%	47.7%	100.0%	43.5%
14070	Gowanda	31.9%	31.6%	46.1%	74.4%	47.9%
14035	Collins Center	11.8%	100.0%	37.2%	100.0%	50.0%
14030	Chaffee	20.4%	53.9%	53.4%	81.0%	59.8%
14170	West Falls	32.2%	74.9%	49.1%	100.0%	61.0%
14111	North Collins	32.2%	56.8%	61.1%	100.0%	66.1%
14004	Alden	29.7%	54.2%	63.3%	84.9%	66.6%
14055	East Concord	32.7%	67.4%	58.9%	100.0%	68.4%
14025	Boston	37.4%	86.5%	63.0%	69.9%	68.6%
14080	Holland	31.4%	59.6%	61.8%	96.4%	69.2%
14210	Buffalo	38.4%	57.7%	74.9%	84.3%	70.5%
14206	Buffalo	42.2%	64.0%	75.1%	79.2%	72.8%
14001	Akron	38.7%	61.1%	66.9%	100.0%	73.5%
14208	Buffalo	36.7%	62.1%	86.3%	70.8%	74.0%
14222	Buffalo (Elmwood Village)	40.7%	61.0%	90.3%	80.6%	74.5%
14219	Blasdell	38.6%	61.1%	74.0%	97.0%	75.2%
14047	Derby	39.0%	66.8%	70.0%	100.0%	76.2%
14091	Lawtons	44.3%	45.2%	86.5%	90.1%	76.4%
14006	Angola	35.2%	67.5%	75.7%	86.7%	77.3%
14141	Springville	33.2%	71.7%	70.4%	97.1%	77.6%
14102	Marilla	34.3%	52.6%	82.4%	96.0%	77.7%
14059	Elma	38.6%	70.1%	74.1%	88.7%	77.8%
14215	Buffalo	37.9%	66.2%	79.4%	100.0%	78.0%
14069	Glenwood	38.6%	86.7%	70.5%	90.3%	78.4%
14204	Buffalo	38.4%	74.4%	76.6%	89.0%	78.4%
14218	Lackawanna	31.8%	62.1%	80.6%	97.4%	78.9%
14211	Buffalo	46.2%	76.0%	80.7%	87.6%	80.4%
14139	South Wales	36.0%	94.0%	69.2%	100.0%	80.4%
14057	Eden	46.0%	88.1%	71.3%	100.0%	80.8%
14207	Buffalo	43.3%	62.8%	94.8%	90.4%	81.3%
14216	Buffalo	50.8%	69.5%	84.5%	100.0%	81.5%
14043	Depew	44.4%	70.1%	81.9%	93.6%	81.8%
14209	Buffalo	37.9%	74.3%	84.9%	100.0%	83.5%
14225	Cheektowaga	47.4%	66.6%	91.6%	92.1%	83.6%
14220	Buffalo	44.6%	74.2%	84.1%	98.2%	83.7%

All data are provisional and represent data available at the time of the report.

<https://covid19vaccine.health.ny.gov/vaccine-demographic-data>

14052	East Aurora	65.1%	84.2%	76.7%	100.0%	84.0%
14150	Tonawanda	47.7%	77.5%	83.0%	94.3%	84.6%
14214	Buffalo	46.5%	79.3%	87.0%	94.4%	84.9%
14031	Clarence	53.0%	74.8%	80.2%	100.0%	85.0%
14224	West Seneca	50.8%	79.0%	80.1%	100.0%	85.2%
14217	Kenmore	56.9%	88.4%	80.2%	93.4%	85.5%
14227	Cheektowaga	57.0%	74.1%	82.7%	100.0%	85.8%
14212	Buffalo	46.6%	84.1%	86.7%	86.3%	85.9%
14169	Wales Center	62.1%	n/a	78.9%	100.0%	86.0%
14032	Clarence Center	54.9%	100.0%	79.2%	100.0%	86.2%
14201	Buffalo	35.4%	86.0%	83.4%	98.8%	86.6%
14213	Buffalo	37.6%	81.9%	90.4%	93.3%	87.2%
14075	Hamburg	54.6%	89.3%	80.9%	100.0%	87.7%
14228	Amherst (Getzville)	57.3%	80.2%	91.6%	95.2%	87.9%
14202	Buffalo	46.2%	71.1%	100.0%	100.0%	88.0%
14072	Grand Island	54.1%	92.0%	83.0%	100.0%	88.7%
14051	East Amherst	66.8%	100.0%	82.5%	100.0%	89.1%
14223	Tonawanda	49.7%	86.5%	88.2%	100.0%	90.5%
14226	Amherst (Snyder/Eggertsville)	57.5%	88.2%	87.9%	100.0%	90.6%
14127	Orchard Park	60.7%	100.0%	84.3%	100.0%	91.3%
14086	Lancaster	56.8%	93.1%	87.7%	100.0%	91.6%
14026	Bowmansville	100.0%	100.0%	87.7%	100.0%	92.4%
14221	Amherst/Williamsville/Clarence	66.3%	100.0%	88.8%	97.3%	93.6%
14033	Colden	58.3%	100.0%	94.2%	96.3%	95.4%
14085	Lake View	60.5%	90.0%	99.9%	95.4%	96.7%
14068	Getzville	76.0%	100.0%	100.0%	93.7%	97.5%
14134	Sardinia	48.6%	100.0%	100.0%	100.0%	100.0%
14203	Buffalo	73.7%	100.0%	100.0%	100.0%	100.0%
Total		47.7%	75.7%	82.0%	95.5%	83.4%

All data are provisional and represent data available at the time of the report.

<https://covid19vaccine.health.ny.gov/vaccine-demographic-data>

Section 3: COVID-19 Mortality Data

Table 4

Erie County COVID-19 Deaths by Age Group (January - December 2021)

Age Group	Jan	Feb	Mar	Apr	May	Jun	Jul	Aug	Sep	Oct	Nov	Dec	Total
<40	3	4	0	4	2	0	1	1	0	3	4	3	25
40 to 49	4	3	1	8	2	0	1	1	1	0	3	7	31
50 to 59	8	11	5	7	5	4	1	6	4	11	12	17	91
60 to 69	31	22	6	24	11	5	1	6	11	15	14	50	196
70 to 79	60	34	16	30	21	4	7	10	15	14	24	46	281
80+	163	62	29	27	24	5	1	17	24	38	40	66	496
Total # of Deaths	269	136	57	100	65	18	12	41	55	81	97	189	1,120
Ave. Death Age	81	76	77	71	74	70	70	74	77	76	73	73	76

Table 5

Erie County COVID-19 Deaths by Age Group (January 1-September 8, 2022)

Age Group	Jan	Feb	Mar	Apr	May	Jun	Jul	Aug	Sept	Total
<40	7	2	0	0	1	1	0	2	0	13
40 to 49	9	1	1	1	1	0	1	0	0	14
50 to 59	19	9	2	0	1	1	0	1	2	35
60 to 69	49	20	3	4	7	7	2	2	2	96
70 to 79	57	25	3	7	17	5	7	8	0	129
80+	90	40	10	17	37	12	10	11	4	231
Total # of Deaths	231	97	19	29	64	26	20	24	8	518
Ave. Death Age	74	76	78	80	81	77	79	76	75	76

2020 total deaths	1,276
2021 total deaths	1,120
2022 deaths to date	518
Total:	2,914

Table 6

Erie County COVID-19 Deaths by Residence

Residence	Fatalities	% of Fatalities	% of Population*
Buffalo	766	26.3%	29.2%
Erie County Excl. Buffalo	2,148	73.7%	70.8%
All of Erie County	2,914	100.0%	100.0%

*Population Source: Prepared from 2020 Census Bureau