



**Erie County
Department of
Health**



Public Health
Prevent. Promote. Protect.

COVID-19 Data Update

Week ending September 24, 2022

All data are provisional.

1,581 new COVID-19 cases were recorded for the week ending September 24, 2022. This is nearly the same as the previous week's total (1,569 cases). These data do not include at-home tests. The weekly COVID-19 positivity rate was 12.7%, a decline from the previous week's rate of 13.5%. Overall reported COVID-19 diagnostic tests increased to 12,447 last week from 11,600 during the previous week.

7-day case rate per 100,000 persons was 165.7, nearly the same as the previous week's rate of 164.4. Erie County remained in a "medium" COVID-19 Community Level per CDC indicators. And, Erie County remains in "high" transmission per CDC community transmission metrics.

Buffalo city COVID-19 cases comprised 32.8% of new COVID-19 cases this past week. (Buffalo city population is 29.2% of all Erie County residents).

Erie County COVID-19 Wastewater Surveillance Data: See Figure 3. COVID-19 wastewater surveillance data through September 22, 2022 showed SARS-CoV-2 viral particles in the top 80-100% of samples collected since 12/1/21 within the Bird Island (9/15) sewershed. City of Tonawanda, Amherst, Big Sister Creek and Kenmore-Tonawanda were in the 60-79% category; Lackawanna (9/20) and Southtowns were in the 40-59% category. Sewersheds for City of Tonawanda and Lackawanna (9/20) showed a 10-99% increase in detected viral particles over the past two weeks; Amherst and Big Sister Creek showed a 9-0% decrease; Bird Island, Kenmore-Tonawanda and Southtowns showed a 99-10% decrease. All data through 9/22/2022 unless otherwise noted. See <https://www.erie.gov/covid19-wastewater/>

Erie County COVID-19 Hospitalization Data: See Figures 4a and 4b. NYSDOH publishes updated hospitalization data by region at <https://coronavirus.health.ny.gov/daily-hospitalization-summary>.

Erie County COVID-19 Vaccination Data: See Section 2. NYSDOH updates vaccine data daily. Demographic data: <https://coronavirus.health.ny.gov/demographic-vaccination-data>.

Erie County COVID-19 Mortality Data: Mortality data are updated through August 25, 2022 based on data available to ECDOH. More recent data will be reported when available. NYSDOH reports COVID-19 mortality data at <https://coronavirus.health.ny.gov/fatalities-0>. See Section 3.

CONTENTS

Section 1: COVID-19 Case Data

Figure 1: Confirmed COVID-19 Cases by Age Group & Gender (to date)	Page 1
Figure 2: Confirmed COVID-19 Cases by Age Group and Gender (latest week)	Page 1
Table 1: New COVID-19 Cases in the Past Seven Days	Page 1
Figure 3: Erie County COVID-19 Wastewater Surveillance	Page 2
Table 2: Confirmed COVID-19 Cases by ZIP Code	Page 3
Figures 4a and 4b: Erie County COVID-19 Hospitalizations	Page 5

Section 2: COVID-19 Vaccination Data

Table 3: Erie County COVID-19 Vaccination Rates by Age and ZIP Code	Page 6
---	--------

Section 3: COVID-19 Mortality Data

Tables 4 & 5: Erie County COVID-19 Deaths By Age Group	Page 8
Table 6: Erie County COVID-19 Deaths by Residence	Page 8

Section 1: Confirmed COVID-19 Cases

Figure 1

Confirmed COVID-19 Cases by Age Group and Gender (March 2020-present)

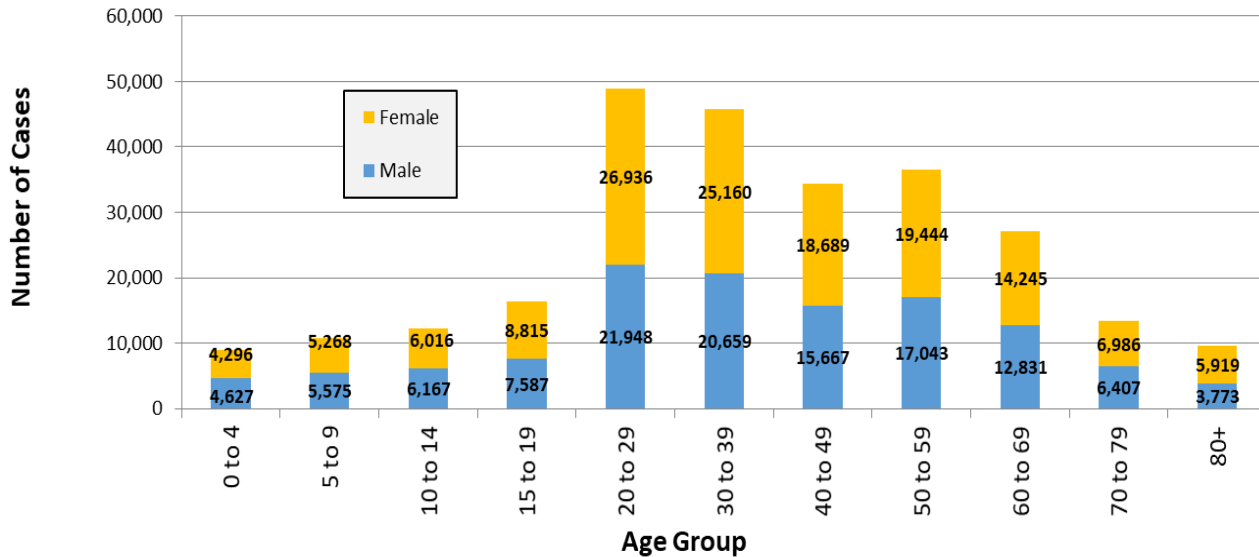


Figure 2

Confirmed COVID-19 Cases by Age Group (September 18-24, 2022)

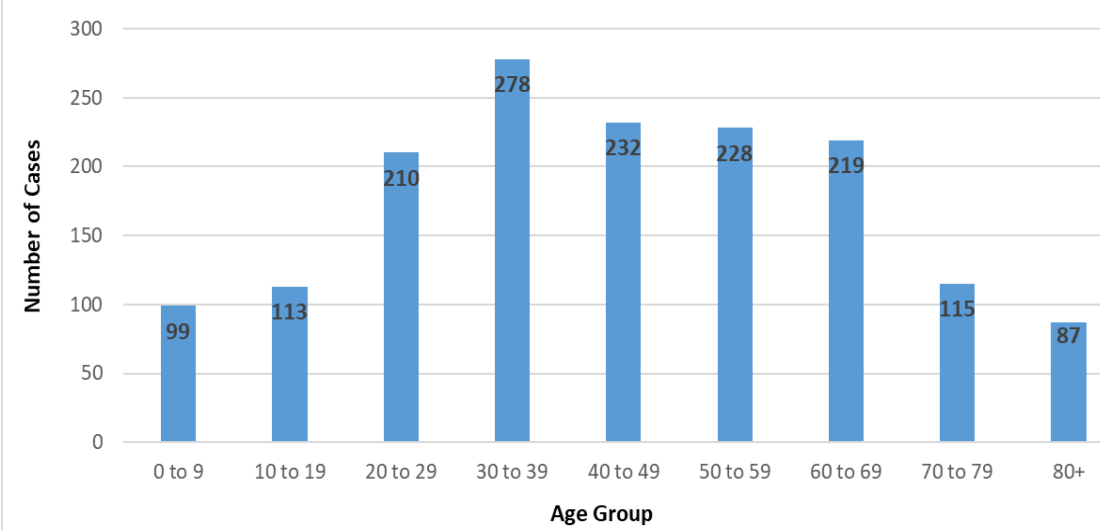


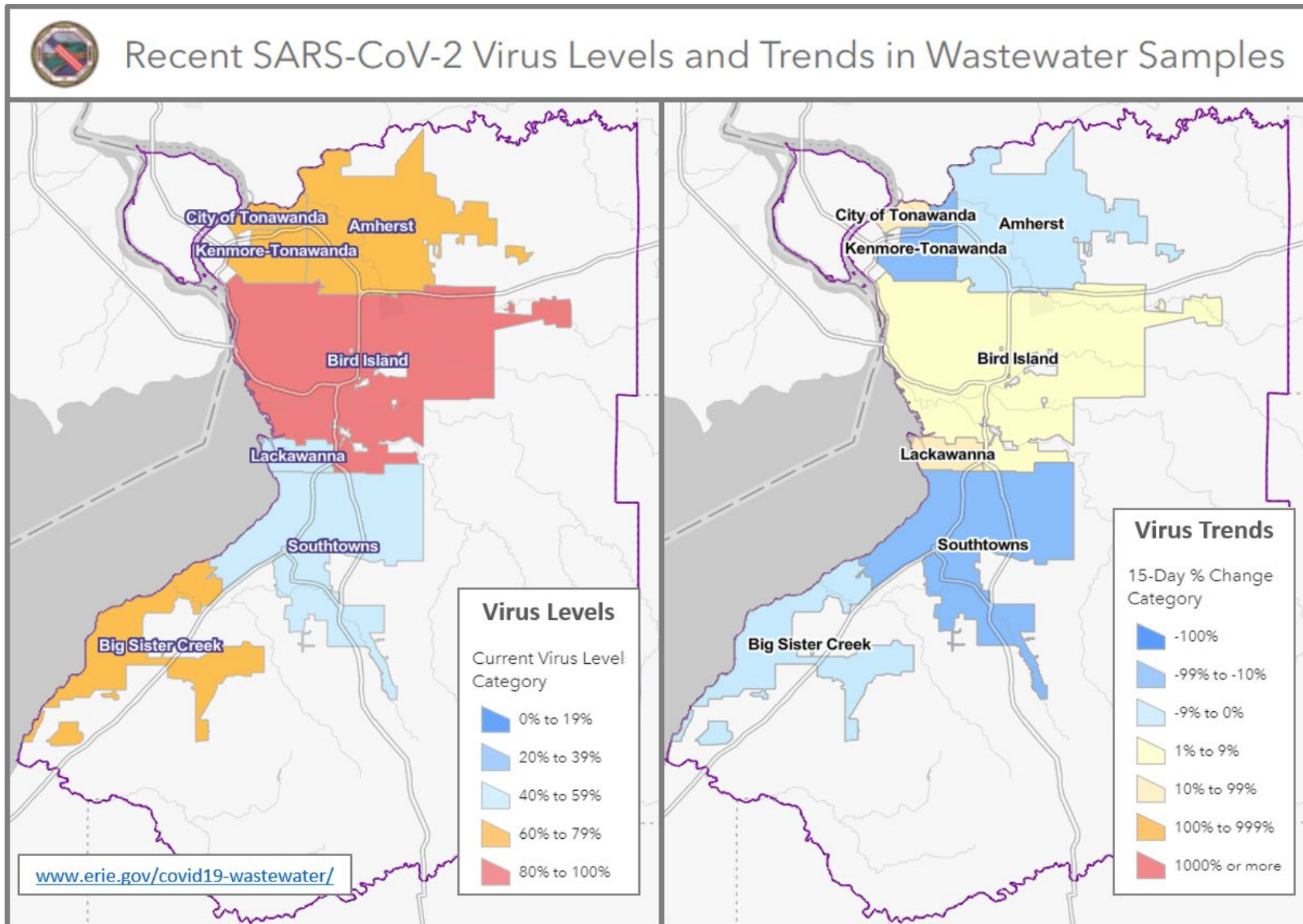
Table 1

New Cases in Past Seven Days, Past Six Weeks

Week Ending	New Cases in Past 7 Days	Total New Cases in the Past Seven Days per 100,000 Persons*
8/20/2022	1,301	136.3
8/27/2022	1,454	152.4
9/3/2022	1,316	137.9
9/10/2022	1,306	136.9
9/17/2022	1,569	164.4
9/24/2022	1,581	165.7

This metric shows trends over time.
*Population Source: 2020 U.S. Census Bureau

Figure 3: Erie County COVID-19 Wastewater Surveillance



Charts as of September 22, 2022

All data are provisional and represent data available at the time of the report.

Table 2

Confirmed COVID-19 Cases by ZIP Code

ZIP Code	City	Cases	Zip Code Population**	New Daily Cases per 100,000 Persons on 7-Day Rolling Average ¹	Total New Cases per 100,000 Persons in the Past 7 Days ²
14221	Amherst/Williamsville/Clarend	92	53,555	24.5	171.8
14075	Hamburg	74	41,937	25.2	176.5
14215	Buffalo (East)	68	39,999	24.3	170.0
14226	Amherst (Snyder/Eggertsville)	65	29,267	31.7	222.1
14150	Tonawanda	59	41,676	20.2	141.6
14086	Lancaster	56	31,847	25.1	175.8
14224	West Seneca	55	39,889	19.7	137.9
14216	Buffalo (North)	54	22,431	34.4	240.7
14225	Cheektowaga	54	33,385	23.1	161.7
14051	Amherst (East)	52	19,533	38.0	266.2
14217	Kenmore	48	23,480	29.2	204.4
14206	Buffalo (Kaisertown)	47	20,751	32.4	226.5
14220	Buffalo (South)	47	24,227	27.7	194.0
14227	Cheektowaga	46	23,426	28.1	196.4
14207	Buffalo (Black Rock/Riverside)	45	23,552	27.3	191.1
14213	Buffalo (West Side)	45	24,465	26.3	183.9
14043	Depew	43	24,742	24.8	173.8
14127	Orchard Park	43	29,961	20.5	143.5
14211	Buffalo/Cheektowaga	40	22,611	25.3	176.9
14228	Amherst (Getzville)	38	20,857	26.0	182.2
14219	Blasdell	29	11,536	35.9	251.4
14223	Tonawanda	29	22,665	18.3	128.0
14218	Lackawanna	27	19,039	20.3	141.8
14072	Grand Island	26	20,374	18.2	127.6
14201	Buffalo (Downtown)	26	11,549	32.2	225.1
14214	Buffalo (University)	25	19,775	18.1	126.4
14001	Akron	24	9,464	36.2	253.6
14052	Aurora	24	17,329	19.8	138.5
14141	Springville	24	7,728	44.4	310.6
14210	Buffalo (South)	20	14,694	19.4	136.1
14031	Clarence	19	9,392	28.9	202.3
14059	Elma	19	8,933	30.4	212.7
14212	Buffalo (Broadway)/Sloan	19	10,641	25.5	178.6
14222	Buffalo (Elmwood Village)	19	14,046	19.3	135.3
14085	Hamburg (Lake View)	18	7,353	35.0	244.8
14068	Amherst (Getzville)	14	7,150	x	x
14204	Buffalo (East)	14	8,691	x	x
14006	Angola	13	9,858	x	x
14057	Eden	13	8,116	x	x
14032	Clarence (North)	12	7,989	x	x

All data are provisional and represent data available at the time of the report.

14208	Buffalo (east)	12	11,125	x	x
14209	Buffalo (Delaware)	12	7,926	x	x
14004	Alden	8	12,704	x	x
14081	Irving	8	3,095	x	x
14203	Buffalo	7	1,618	x	x
14139	Wales	6	2,125	x	x
14202	Buffalo (Downtown)	6	3,911	x	x
14070	Gowanda	5	6,732	x	x
14091	Lawtons	5	1,079	x	x
14025	Boston	*	3,039	x	x
14026	Bowmansville	*	674	x	x
14030	Chaffee	*	1,807	x	x
14033	Colden	*	2,219	x	x
14034	Collins	*	2,742	x	x
14047	Derby	*	6,440	x	x
14055	East Concord	*	1,405	x	x
14069	Glenwood	*	844	x	x
14080	Holland	*	4,330	x	x
14102	Marilla	*	1,281	x	x
14111	North Collins	*	3,352	x	x
14170	West Falls	*	2,286	x	x
14231	Buffalo	*	n/a	x	x
14260-1426	Amherst (UB)	*	10,300	x	x
	All Erie County[†]	1,569	954,236	23.5	164.4

***Population Source: ZIP code data from U.S. Census Bureau, DP-1, General Population & Housing Characteristics*

ZCTAs are an approximation of mailing ZIP codes

Buffalo and Erie County from 2010 (U.S. Census Redistricting Data, PL 94-171) Summary File

¹ *Calculated by dividing total cases in past 7 days by 7, then dividing by ZIP code pop. & multiplying by 100,000*

² *Calculated by dividing total cases in the past 7 days by the zip code population, and multiplying by 100,000*

[†] *Total Population Value for Erie County (954,236) from 2020 U.S. Census Bureau used to calculate 'All Erie County' daily and 7-day case rates*

The New York State Department of Health maintains a COVID-19 data dashboard with county-level reporting.

<https://coronavirus.health.ny.gov/covid-19-data-new-york>

Figure 4a

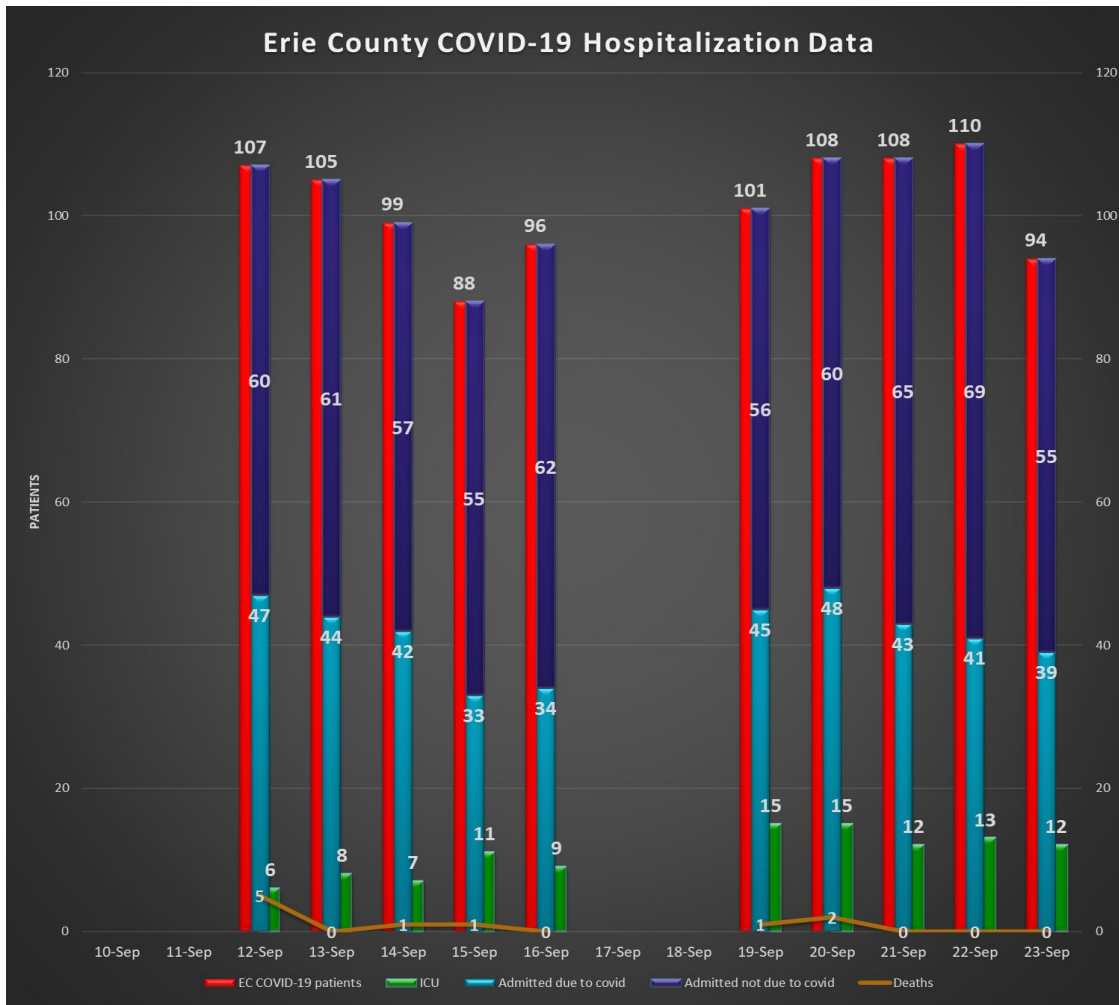
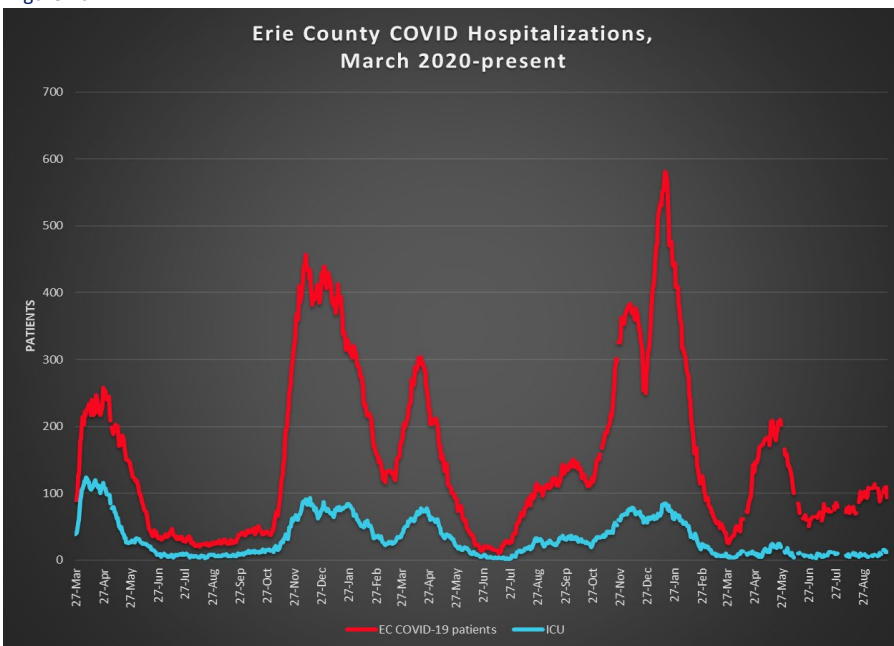


Figure 4b



Data provided by Erie County hospitals and NYSDOH. Patients may include residents from outside Erie County. See <https://coronavirus.health.ny.gov/daily-hospitalization-summary>

Section 2: COVID-19 Vaccine Information

Table 3

Erie County COVID-19 Vaccination Rates, Age & ZIP Code through August 30, 2022

ZIP Code	City	% of 0-19 population vaccinated (with at least 1 dose)	% of 20-34 population vaccinated (with at least 1 dose)	% of 35-64 population vaccinated (with at least 1 dose)	% of 65+ population vaccinated (with at least 1 dose)	% of 20+ Population Vaccinated (with at least 1 dose)
14112	North Evans	n/a	31.1%	n/a	46.7%	40.0%
14034	Collins	41.7%	29.8%	35.5%	88.8%	41.8%
14061	Farnham	9.8%	20.0%	48.4%	100.0%	43.8%
14070	Gowanda	32.0%	31.6%	46.1%	74.4%	47.9%
14035	Collins Center	11.8%	100.0%	37.2%	100.0%	50.0%
14030	Chaffee	20.2%	54.4%	53.5%	80.3%	59.8%
14170	West Falls	32.3%	74.6%	49.1%	100.0%	61.0%
14111	North Collins	32.3%	57.0%	61.2%	100.0%	66.2%
14004	Alden	29.7%	54.2%	63.4%	85.1%	66.7%
14055	East Concord	32.7%	67.4%	58.9%	100.0%	68.4%
14025	Boston	37.4%	86.5%	63.0%	69.7%	68.6%
14080	Holland	31.3%	59.4%	61.7%	96.1%	69.0%
14210	Buffalo	38.6%	57.8%	74.9%	84.3%	70.5%
14206	Buffalo	42.3%	64.1%	75.1%	79.0%	72.9%
14001	Akron	38.9%	60.9%	66.8%	100.0%	73.4%
14208	Buffalo	36.7%	62.3%	86.3%	70.5%	74.0%
14222	Buffalo (Elmwood Village)	40.8%	60.9%	90.0%	80.5%	74.4%
14219	Blasdell	38.7%	61.0%	74.0%	96.8%	75.2%
14047	Derby	39.1%	67.0%	69.9%	100.0%	76.2%
14091	Lawtons	44.3%	45.2%	86.8%	90.1%	76.5%
14006	Angola	35.3%	67.4%	75.8%	86.7%	77.3%
14141	Springville	33.3%	71.7%	70.4%	97.3%	77.6%
14102	Marilla	34.3%	53.4%	82.2%	95.1%	77.6%
14059	Elma	38.6%	70.3%	74.2%	88.8%	77.9%
14215	Buffalo	38.0%	66.3%	79.3%	100.0%	78.0%
14204	Buffalo	38.5%	74.7%	76.5%	88.8%	78.4%
14069	Glenwood	38.6%	86.7%	70.8%	91.5%	78.8%
14218	Lackawanna	31.8%	62.2%	80.7%	97.4%	79.0%
14139	South Wales	36.0%	93.6%	68.8%	100.0%	80.2%
14211	Buffalo	46.3%	76.0%	80.6%	87.6%	80.4%
14057	Eden	46.0%	88.1%	71.2%	100.0%	80.8%
14207	Buffalo	43.5%	62.8%	94.8%	90.4%	81.3%
14216	Buffalo	51.1%	69.5%	84.6%	100.0%	81.6%
14043	Depew	44.4%	70.0%	81.8%	93.6%	81.7%
14209	Buffalo	38.2%	74.4%	84.9%	100.0%	83.6%
14220	Buffalo	44.6%	74.1%	84.1%	98.1%	83.7%
14225	Cheektowaga	47.5%	66.8%	91.6%	92.1%	83.7%

All data are provisional and represent data available at the time of the report.

<https://covid19vaccine.health.ny.gov/vaccine-demographic-data>

14052	East Aurora	65.3%	84.3%	76.8%	100.0%	84.1%
14150	Tonawanda	47.8%	77.5%	83.1%	94.2%	84.6%
14214	Buffalo	46.6%	79.3%	87.0%	94.2%	84.9%
14031	Clarence	53.0%	74.8%	80.1%	100.0%	85.0%
14224	West Seneca	50.9%	79.0%	80.0%	100.0%	85.2%
14217	Kenmore	57.0%	88.6%	80.3%	93.3%	85.5%
14212	Buffalo	46.8%	84.0%	86.8%	85.9%	85.8%
14227	Cheektowaga	57.3%	74.1%	82.8%	100.0%	85.8%
14169	Wales Center	62.1%	n/a	78.9%	100.0%	86.0%
14032	Clarence Center	54.7%	100.0%	79.3%	100.0%	86.3%
14201	Buffalo	35.6%	85.9%	83.3%	98.5%	86.5%
14213	Buffalo	37.6%	82.0%	90.5%	93.4%	87.3%
14075	Hamburg	54.7%	89.4%	80.9%	100.0%	87.7%
14228	Amherst (Getzville)	57.5%	80.3%	91.7%	95.3%	87.9%
14202	Buffalo	45.7%	71.3%	100.0%	100.0%	88.1%
14072	Grand Island	54.2%	92.0%	83.1%	100.0%	88.8%
14051	East Amherst	67.1%	100.0%	82.4%	100.0%	89.1%
14226	Amherst (Snyder/Eggertsville)	57.6%	88.2%	87.9%	100.0%	90.6%
14223	Tonawanda	50.0%	86.7%	88.2%	100.0%	90.6%
14127	Orchard Park	61.0%	100.0%	84.2%	100.0%	91.3%
14086	Lancaster	56.8%	93.2%	87.8%	100.0%	91.6%
14026	Bowmansville	100.0%	100.0%	87.7%	100.0%	92.4%
14221	Amherst/Williamsville/Clarence	66.4%	100.0%	88.8%	97.4%	93.6%
14033	Colden	58.3%	100.0%	94.2%	96.8%	95.5%
14085	Lake View	60.6%	90.1%	99.9%	95.7%	96.9%
14068	Getzville	75.8%	100.0%	100.0%	93.9%	97.5%
14134	Sardinia	48.6%	100.0%	100.0%	100.0%	100.0%
14203	Buffalo	73.7%	100.0%	100.0%	100.0%	100.0%
Total		47.8%	75.7%	82.0%	95.5%	83.4%

All data are provisional and represent data available at the time of the report.

<https://covid19vaccine.health.ny.gov/vaccine-demographic-data>

Section 3: COVID-19 Mortality Data

Table 4

Erie County COVID-19 Deaths by Age Group (January - December 2021)

Age Group	Jan	Feb	Mar	Apr	May	Jun	Jul	Aug	Sep	Oct	Nov	Dec	Total
<40	3	4	0	4	2	0	1	1	0	3	4	3	25
40 to 49	4	3	1	8	2	0	1	1	1	0	3	7	31
50 to 59	8	11	5	7	5	4	1	6	4	11	12	17	91
60 to 69	31	22	6	24	11	5	1	6	11	15	14	50	196
70 to 79	60	34	16	30	21	4	7	10	15	14	24	46	281
80+	163	62	29	27	24	5	1	17	24	38	40	66	496
Total # of Deaths	269	136	57	100	65	18	12	41	55	81	97	189	1,120
Ave. Death Age	81	76	77	71	74	70	70	74	77	76	73	73	76

Table 5

Erie County COVID-19 Deaths by Age Group (January 1-September 8, 2022)

Age Group	Jan	Feb	Mar	Apr	May	Jun	Jul	Aug	Sept	Total
<40	7	2	0	0	1	1	0	2	0	13
40 to 49	9	1	1	1	1	0	1	0	0	14
50 to 59	19	9	2	0	1	1	0	1	2	35
60 to 69	49	20	3	4	7	7	2	2	2	96
70 to 79	57	25	3	7	17	5	7	8	0	129
80+	90	40	10	17	37	12	10	11	4	231
Total # of Deaths	231	97	19	29	64	26	20	24	8	518
Ave. Death Age	74	76	78	80	81	77	79	76	75	76

2020 total deaths	1,276
2021 total deaths	1,120
2022 deaths to date	518
Total:	2,914

Table 6

Erie County COVID-19 Deaths by Residence

Residence	Fatalities	% of Fatalities	% of Population*
Buffalo	766	26.3%	29.2%
Erie County Excl. Buffalo	2,148	73.7%	70.8%
All of Erie County	2,914	100.0%	100.0%

*Population Source: Prepared from 2020 Census Bureau

Latest mortality data is presented.