



**Erie County  
Department of  
Health**



**Public Health**  
Prevent. Promote. Protect.

## COVID-19 Data Update

Week ending October 1, 2022

All data are provisional.

1,517 new COVID-19 cases were recorded for the week ending October 1, 2022. This is a 4% decline as the previous week's total (1,581 cases). These data do not include at-home tests. The weekly COVID-19 positivity rate was 12.9%, a very slight increase from the previous week's rate of 12.7%. Overall reported COVID-19 diagnostic tests decreased to 11,754 from 12,447 during the previous week.

7-day case rate per 100,000 persons was 159, slight decline from the previous week's rate of 165.7. Erie County remained in a "medium" COVID-19 Community Level per CDC indicators. And, Erie County remains in "high" transmission per CDC community transmission metrics.

Buffalo city COVID-19 cases comprised 30.6% of new COVID-19 cases this past week. (Buffalo city population is 29.2% of all Erie County residents).

Erie County COVID-19 Wastewater Surveillance Data: See Figure 3. COVID-19 wastewater surveillance data through September 30, 2022 showed SARS-CoV-2 viral particles in the top 40-59% of samples collected since 12/1/21 within the Amherst, Kenmore-Tonawanda, Lackawanna and Southtowns sewersheds (9/29) and Big Sister Creek. City of Tonawanda (9/29) was in the 60-79% category. Bird Island is pending data; most recent data are shown on the graphic. Sewersheds for Amherst, Bird Island, City of Tonawanda, Kenmore-Tonawanda and Southtowns (9/29) and Big Sister Creek showed a 99-10% decrease in detected viral particles over the past two weeks; Lackawanna (9/29) showed a 9-0% decrease. All data through 9/30/2022 unless otherwise noted. See <https://www.erie.gov/covid19-wastewater/>

Erie County COVID-19 Hospitalization Data: See Figures 4a and 4b. NYSDOH publishes updated hospitalization data by region at <https://coronavirus.health.ny.gov/daily-hospitalization-summary>.

Erie County COVID-19 Vaccination Data: See Section 2. NYSDOH updates vaccine data daily. Demographic data: <https://coronavirus.health.ny.gov/demographic-vaccination-data>.

Erie County COVID-19 Mortality Data: Mortality data are updated through September 22, 2022 based on data available to ECDOH. More recent data will be reported when available. NYSDOH reports COVID-19 mortality data at <https://coronavirus.health.ny.gov/fatalities-0>. See Section 3.

### CONTENTS

#### **Section 1: COVID-19 Case Data**

Figure 1: Confirmed COVID-19 Cases by Age Group & Gender (to date)	Page 1
Figure 2: Confirmed COVID-19 Cases by Age Group and Gender (latest week)	Page 1
Table 1: New COVID-19 Cases in the Past Seven Days	Page 1
Figure 3: Erie County COVID-19 Wastewater Surveillance	Page 2
Table 2: Confirmed COVID-19 Cases by ZIP Code	Page 3
Figures 4a and 4b: Erie County COVID-19 Hospitalizations	Page 5

#### **Section 2: COVID-19 Vaccination Data**

Table 3: Erie County COVID-19 Vaccination Rates by Age and ZIP Code	Page 6
---	--------

#### **Section 3: COVID-19 Mortality Data**

Tables 4 & 5: Erie County COVID-19 Deaths By Age Group	Page 8
Table 6: Erie County COVID-19 Deaths by Residence	Page 8

## Section 1: Confirmed COVID-19 Cases

Figure 1

**Confirmed COVID-19 Cases by Age Group and Gender (March 2020-present)**

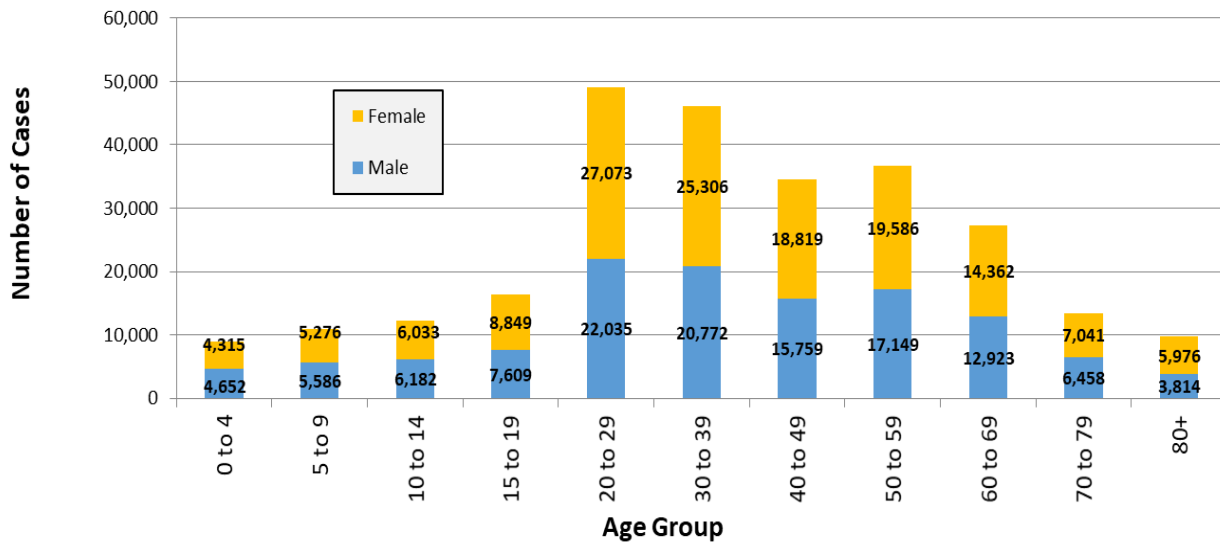


Figure 2

**Confirmed COVID-19 Cases by Age Group (September 25-October 1, 2022)**

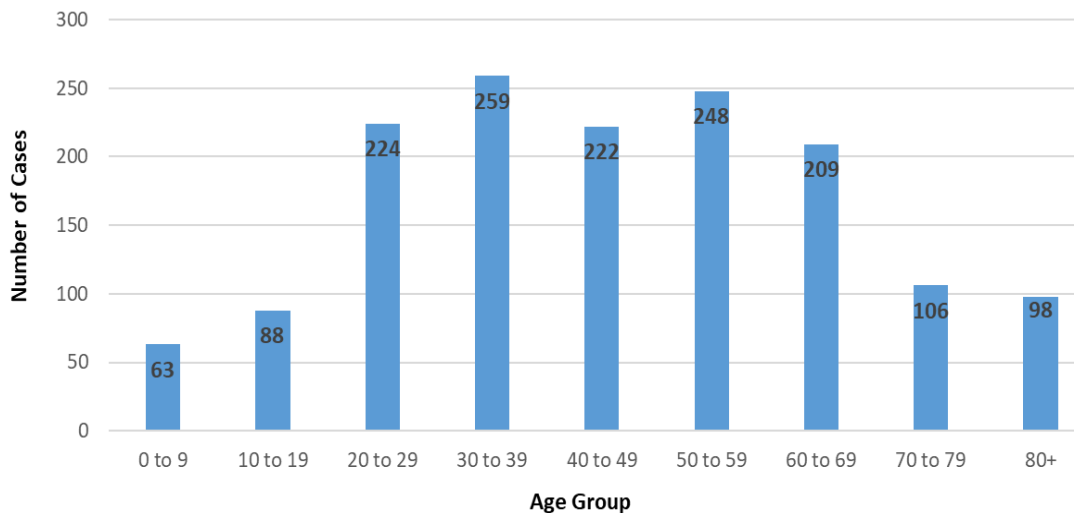


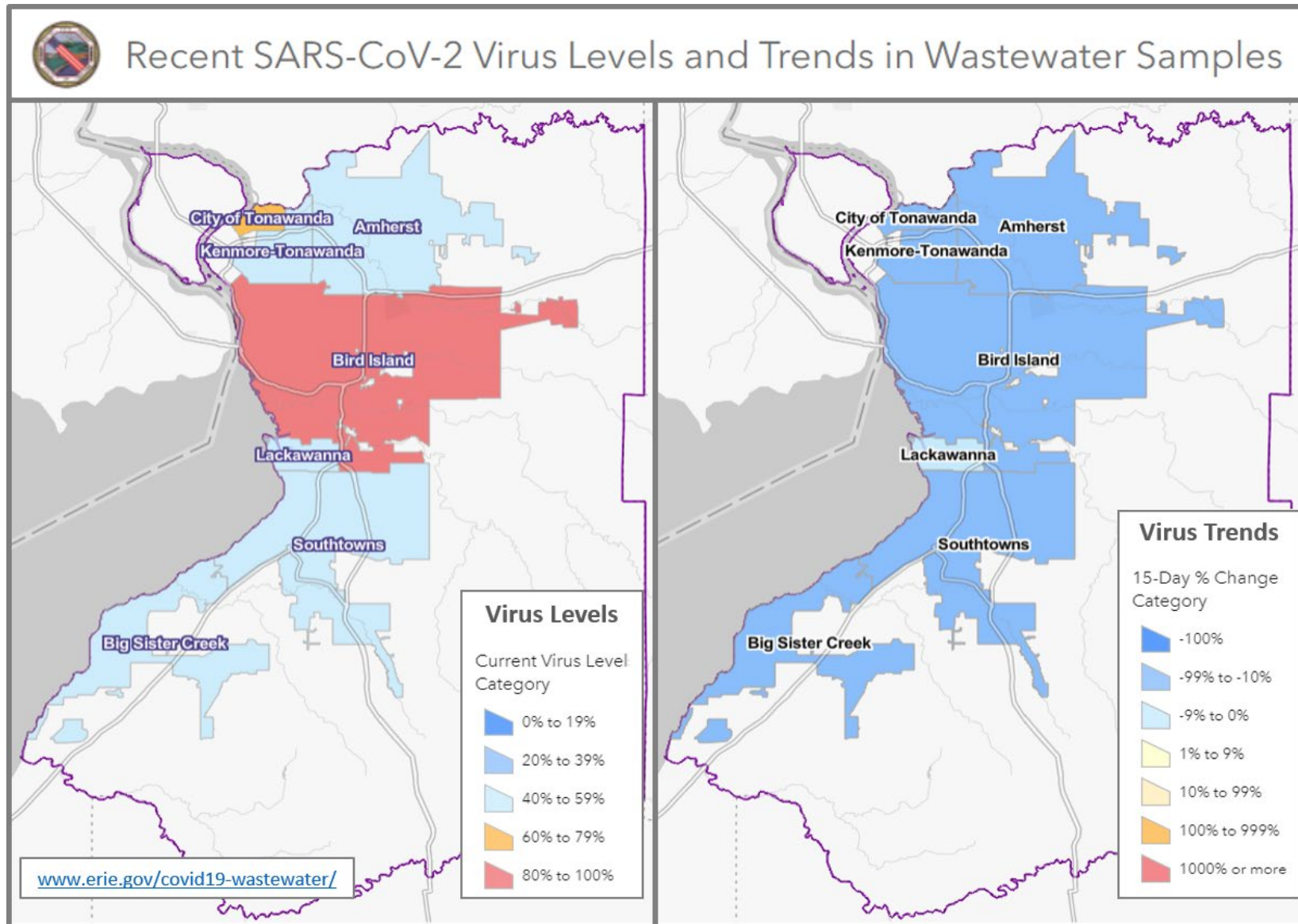
Table 1

**New Cases in Past Seven Days, Past Six Weeks**

Week Ending	New Cases in Past 7 Days	Total New Cases in the Past Seven Days per 100,000 Persons*
8/27/2022	1,454	152.4
9/3/2022	1,316	137.9
9/10/2022	1,306	136.9
9/17/2022	1,569	164.4
9/24/2022	1,581	165.7
10/1/2022	1,517	159.0

This metric shows trends over time.  
\*Population Source: 2020 U.S. Census Bureau

Figure 3: Erie County COVID-19 Wastewater Surveillance



Charts as of September 30, 2022

Bird Island virus level data as of 9/22/2022

All data are provisional and represent data available at the time of the report.

Table 2

**Confirmed COVID-19 Cases by ZIP Code**

ZIP Code	City	Cases	Zip Code Population**	New Daily Cases per 100,000 Persons on 7-Day Rolling Average <sup>1</sup>	Total New Cases per 100,000 Persons in the Past 7 Days <sup>2</sup>
14075	Hamburg	98	41,937	33.4	233.7
14221	Amherst/Williamsville/Clarendon	75	53,555	20.0	140.0
14150	Tonawanda	72	41,676	24.7	172.8
14224	West Seneca	68	39,889	24.4	170.5
14225	Cheektowaga	64	33,385	27.4	191.7
14086	Lancaster	63	31,847	28.3	197.8
14215	Buffalo (East)	63	39,999	22.5	157.5
14226	Amherst (Snyder/Eggertsville)	53	29,267	25.9	181.1
14227	Cheektowaga	48	23,426	29.3	204.9
14043	Depew	45	24,742	26.0	181.9
14127	Orchard Park	45	29,961	21.5	150.2
14220	Buffalo (South)	45	24,227	26.5	185.7
14206	Buffalo (Kaisertown)	43	20,751	29.6	207.2
14207	Buffalo (Black Rock/Riverside)	41	23,552	24.9	174.1
14228	Amherst (Getzville)	40	20,857	27.4	191.8
14051	Amherst (East)	37	19,533	27.1	189.4
14072	Grand Island	37	20,374	25.9	181.6
14223	Tonawanda	36	22,665	22.7	158.8
14217	Kenmore	34	23,480	20.7	144.8
14216	Buffalo (North)	32	22,431	20.4	142.7
14218	Lackawanna	32	19,039	24.0	168.1
14213	Buffalo (West Side)	29	24,465	16.9	118.5
14210	Buffalo (South)	28	14,694	27.2	190.6
14219	Blasdell	27	11,536	33.4	234.0
14211	Buffalo/Cheektowaga	25	22,611	15.8	110.6
14052	Aurora	23	17,329	19.0	132.7
14214	Buffalo (University)	23	19,775	16.6	116.3
14222	Buffalo (Elmwood Village)	23	14,046	23.4	163.7
14031	Clarence	19	9,392	28.9	202.3
14059	Elma	19	8,933	30.4	212.7
14212	Buffalo (Broadway)/Sloan	19	10,641	25.5	178.6
14141	Springville	17	7,728	31.4	220.0
14208	Buffalo (east)	17	11,125	21.8	152.8
14004	Alden	16	12,704	18.0	125.9
14204	Buffalo (East)	15	8,691	24.7	172.6
14201	Buffalo (Downtown)	14	11,549	x	x
14006	Angola	12	9,858	x	x
14209	Buffalo (Delaware)	12	7,926	x	x
14068	Amherst (Getzville)	11	7,150	x	x
14001	Akron	10	9,464	x	x

All data are provisional and represent data available at the time of the report.

14085	Hamburg (Lake View)	10	7,353	x	x
14032	Clarence (North)	9	7,989	x	x
14057	Eden	9	8,116	x	x
14047	Derby	8	6,440	x	x
14025	Boston	6	3,039	x	x
14111	North Collins	6	3,352	x	x
14091	Lawtons	5	1,079	x	x
14203	Buffalo	5	1,618	x	x
14026	Bowmansville	*	674	x	x
14030	Chaffee	*	1,807	x	x
14033	Colden	*	2,219	x	x
14034	Collins	*	2,742	x	x
14055	East Concord	*	1,405	x	x
14069	Glenwood	*	844	x	x
14070	Gowanda	*	6,732	x	x
14080	Holland	*	4,330	x	x
14081	Irving	*	3,095	x	x
14102	Marilla	*	1,281	x	x
14139	Wales	*	2,125	x	x
14170	West Falls	*	2,286	x	x
14202	Buffalo (Downtown)	*	3,911	x	x
14231	Buffalo	*	n/a	x	x
14260-1426	Amherst (UB)	*	10,300	x	x
	<b>All Erie County<sup>†</sup></b>	<b>1,517</b>	<b>954,236</b>	<b>22.7</b>	<b>159.0</b>

*\*\*Population Source: ZIP code data from U.S. Census Bureau, DP-1, General Population & Housing Characteristics*

*ZCTAs are an approximation of mailing ZIP codes*

*Buffalo and Erie County from 2010 (U.S. Census Redistricting Data, PL 94-171) Summary File*

<sup>1</sup> *Calculated by dividing total cases in past 7 days by 7, then dividing by ZIP code pop. & multiplying by 100,000*

<sup>2</sup> *Calculated by dividing total cases in the past 7 days by the zip code population, and multiplying by 100,000*

<sup>†</sup> *Total Population Value for Erie County (954,236) from 2020 U.S. Census Bureau used to calculate 'All Erie County' daily and 7-day case rates*

The New York State Department of Health maintains a COVID-19 data dashboard with county-level reporting.

<https://coronavirus.health.ny.gov/covid-19-data-new-york>

Figure 4a

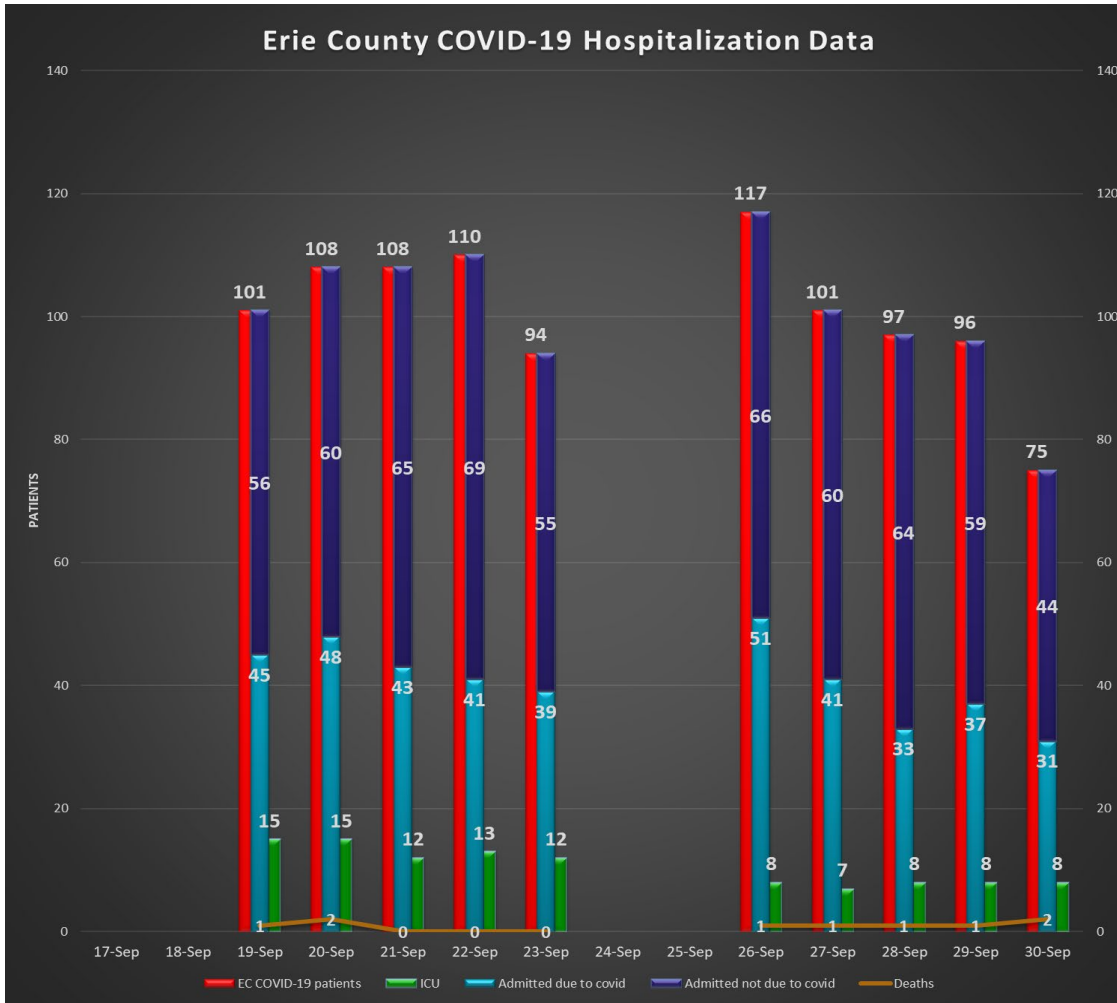
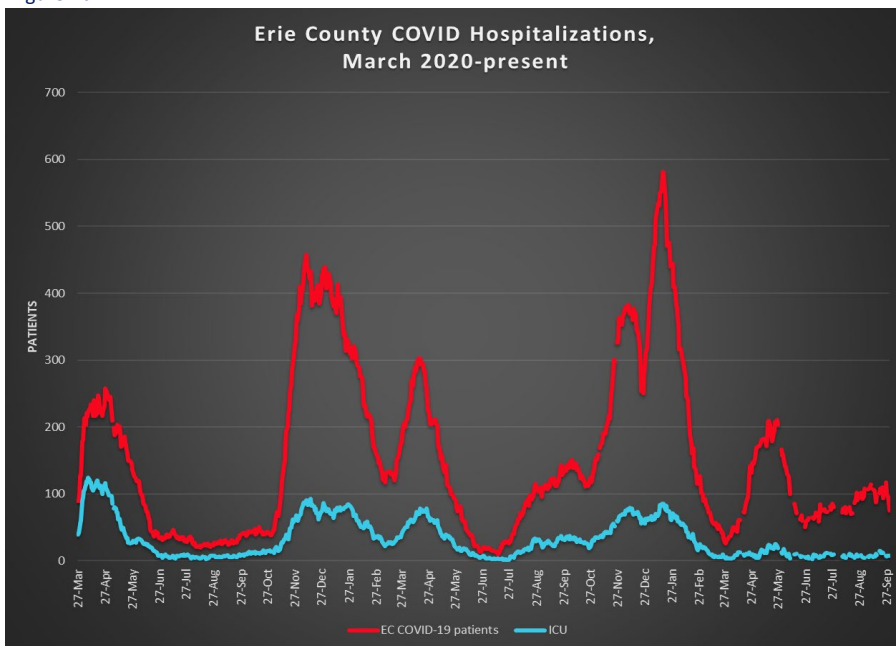


Figure 4b



Data provided by Erie County hospitals and NYSDOH. Patients may include residents from outside Erie County. See <https://coronavirus.health.ny.gov/daily-hospitalization-summary>

**Section 2: COVID-19 Vaccine Information**

Table 3

**Erie County COVID-19 Vaccination Rates, Age & ZIP Code through October 3, 2022**

ZIP Code	City	% of 0-19 population vaccinated (with at least 1 dose)	% of 20-34 population vaccinated (with at least 1 dose)	% of 35-64 population vaccinated (with at least 1 dose)	% of 65+ population vaccinated (with at least 1 dose)	% of 20+ Population Vaccinated (with at least 1 dose)
14112	North Evans	n/a	31.1%	n/a	46.7%	40.0%
14034	Collins	42.1%	30.0%	35.6%	88.8%	41.8%
14061	Farnham	9.8%	20.0%	48.4%	100.0%	43.8%
14070	Gowanda	32.0%	31.6%	46.1%	74.6%	47.9%
14035	Collins Center	11.8%	100.0%	39.5%	100.0%	51.9%
14030	Chaffee	20.2%	54.8%	53.5%	80.7%	59.9%
14170	West Falls	32.3%	74.6%	49.1%	100.0%	61.0%
14111	North Collins	32.3%	57.0%	61.2%	100.0%	66.2%
14004	Alden	29.6%	54.1%	63.4%	85.1%	66.7%
14055	East Concord	32.7%	67.4%	58.8%	100.0%	68.3%
14025	Boston	37.7%	87.0%	63.2%	69.2%	68.6%
14080	Holland	31.3%	59.6%	61.7%	96.1%	69.0%
14210	Buffalo	38.6%	57.9%	75.0%	84.4%	70.6%
14206	Buffalo	42.6%	64.1%	75.2%	78.9%	72.9%
14001	Akron	39.0%	61.0%	66.9%	100.0%	73.6%
14208	Buffalo	37.0%	62.2%	86.4%	70.4%	73.9%
14222	Buffalo (Elmwood Village)	40.8%	61.0%	90.2%	80.7%	74.5%
14219	Blasdell	38.8%	61.0%	73.9%	96.9%	75.2%
14091	Lawtons	44.3%	45.2%	86.0%	90.1%	76.2%
14047	Derby	39.0%	67.2%	69.9%	100.0%	76.3%
14006	Angola	35.3%	67.4%	75.8%	86.7%	77.3%
14102	Marilla	34.3%	53.4%	82.0%	94.6%	77.4%
14141	Springville	33.3%	71.8%	70.4%	97.1%	77.6%
14059	Elma	38.6%	70.1%	74.3%	88.8%	77.9%
14215	Buffalo	38.1%	66.4%	79.3%	100.0%	78.0%
14204	Buffalo	38.8%	75.5%	76.6%	88.7%	78.7%
14069	Glenwood	38.6%	86.7%	70.2%	92.0%	78.7%
14218	Lackawanna	31.9%	62.3%	80.5%	97.8%	79.0%
14139	South Wales	36.6%	94.0%	68.7%	100.0%	80.2%
14211	Buffalo	46.6%	76.2%	80.6%	87.6%	80.5%
14057	Eden	46.1%	88.0%	71.2%	100.0%	80.8%
14207	Buffalo	43.7%	62.9%	94.8%	90.5%	81.4%
14216	Buffalo	51.1%	69.6%	84.6%	100.0%	81.6%
14043	Depew	44.4%	70.0%	81.8%	93.5%	81.6%
14209	Buffalo	38.0%	74.7%	84.8%	100.0%	83.6%
14220	Buffalo	44.8%	74.0%	84.1%	97.9%	83.6%
14225	Cheektowaga	47.8%	66.8%	91.7%	92.2%	83.7%

All data are provisional and represent data available at the time of the report.

<https://covid19vaccine.health.ny.gov/vaccine-demographic-data>

14052	East Aurora	65.3%	84.1%	76.8%	100.0%	84.1%
14150	Tonawanda	48.0%	77.4%	83.0%	94.4%	84.6%
14214	Buffalo	46.6%	79.0%	86.7%	94.3%	84.7%
14031	Clarence	53.4%	74.6%	80.1%	100.0%	84.9%
14224	West Seneca	51.0%	78.9%	80.0%	100.0%	85.1%
14217	Kenmore	57.3%	88.7%	80.3%	93.4%	85.6%
14227	Cheektowaga	57.6%	74.3%	82.8%	100.0%	85.9%
14212	Buffalo	46.8%	84.1%	86.9%	86.1%	86.0%
14169	Wales Center	62.1%	n/a	78.9%	100.0%	86.0%
14201	Buffalo	35.7%	85.8%	83.3%	97.7%	86.4%
14032	Clarence Center	54.8%	100.0%	79.4%	100.0%	86.4%
14213	Buffalo	37.8%	82.1%	90.5%	93.5%	87.3%
14075	Hamburg	54.7%	89.3%	81.0%	100.0%	87.7%
14228	Amherst (Getzville)	57.7%	80.3%	91.6%	94.9%	87.8%
14202	Buffalo	46.4%	71.5%	100.0%	100.0%	88.2%
14072	Grand Island	54.4%	92.0%	83.1%	100.0%	88.8%
14051	East Amherst	67.1%	100.0%	82.3%	100.0%	89.0%
14226	Amherst (Snyder/Eggertsville)	57.7%	88.0%	87.9%	100.0%	90.5%
14223	Tonawanda	50.1%	86.8%	88.3%	100.0%	90.7%
14127	Orchard Park	61.2%	100.0%	84.3%	100.0%	91.4%
14086	Lancaster	56.9%	93.4%	87.8%	100.0%	91.7%
14026	Bowmansville	100.0%	100.0%	88.3%	100.0%	92.8%
14221	Amherst/Williamsville/Clare	66.6%	100.0%	88.9%	97.4%	93.7%
14033	Colden	58.8%	100.0%	94.2%	96.8%	95.5%
14085	Lake View	60.6%	90.2%	99.9%	95.4%	96.8%
14068	Getzville	75.7%	100.0%	100.0%	93.7%	97.5%
14134	Sardinia	48.6%	100.0%	100.0%	100.0%	100.0%
14203	Buffalo	73.7%	100.0%	100.0%	100.0%	100.0%
<b>Total</b>		<b>48.0%</b>	<b>75.8%</b>	<b>82.0%</b>	<b>95.5%</b>	<b>83.4%</b>

All data are provisional and represent data available at the time of the report.

<https://covid19vaccine.health.ny.gov/vaccine-demographic-data>



## Section 3: COVID-19 Mortality Data

Table 4

### *Erie County COVID-19 Deaths by Age Group (January - December 2021)*

Age Group	Jan	Feb	Mar	Apr	May	Jun	Jul	Aug	Sep	Oct	Nov	Dec	Total
<40	3	4	0	4	2	0	1	1	0	3	4	3	25
40 to 49	4	3	1	8	2	0	1	1	1	0	3	7	31
50 to 59	8	11	5	7	5	4	1	6	4	11	12	17	91
60 to 69	31	22	6	24	11	5	1	6	11	15	14	50	196
70 to 79	60	34	16	30	21	4	7	10	15	14	24	46	281
80+	163	62	29	27	24	5	1	17	24	38	40	66	496
<b>Total # of Deaths</b>	<b>269</b>	<b>136</b>	<b>57</b>	<b>100</b>	<b>65</b>	<b>18</b>	<b>12</b>	<b>41</b>	<b>55</b>	<b>81</b>	<b>97</b>	<b>189</b>	<b>1,120</b>
<b>Ave. Death Age</b>	<b>81</b>	<b>76</b>	<b>77</b>	<b>71</b>	<b>74</b>	<b>70</b>	<b>70</b>	<b>74</b>	<b>77</b>	<b>76</b>	<b>73</b>	<b>73</b>	<b>76</b>

Table 5

### *Erie County COVID-19 Deaths by Age Group (January 1-September 22, 2022)*

Age Group	Jan	Feb	Mar	Apr	May	Jun	Jul	Aug	Sept	Total
<40	7	2	0	0	1	1	0	2	0	13
40 to 49	9	1	1	1	1	0	1	0	0	14
50 to 59	19	9	2	0	1	1	0	1	4	37
60 to 69	49	20	3	4	7	7	2	2	3	97
70 to 79	57	25	3	7	17	5	7	8	1	130
80+	90	40	10	17	37	12	10	11	9	236
<b>Total # of Deaths</b>	<b>231</b>	<b>97</b>	<b>19</b>	<b>29</b>	<b>64</b>	<b>26</b>	<b>20</b>	<b>24</b>	<b>17</b>	<b>527</b>
<b>Ave. Death Age</b>	<b>74</b>	<b>76</b>	<b>78</b>	<b>80</b>	<b>81</b>	<b>77</b>	<b>79</b>	<b>76</b>	<b>77</b>	<b>76</b>

2020 total deaths	1,276
2021 total deaths	1,120
2022 deaths to date	527
<b>Total:</b>	<b>2,923</b>

Table 6

### *Erie County COVID-19 Deaths by Residence*

Residence	Fatalities	% of Fatalities	% of Population*
Buffalo	769	26.3%	29.2%
Erie County Excl. Buffalo	2,154	73.7%	70.8%
<b>All of Erie County</b>	<b>2,923</b>	<b>100.0%</b>	<b>100.0%</b>

\*Population Source: Prepared from 2020 Census Bureau