



**Erie County
Department of
Health**



Public Health
Prevent. Promote. Protect.

COVID-19 Data Update

Week ending October 15, 2022

All data are provisional.

1,300 new COVID-19 cases were recorded for the week ending October 15, 2022. This is a 17% decrease from the previous week's total (1,558 cases). These data do not include at-home tests. The weekly COVID-19 positivity rate was 12.0%, a decrease from the previous week's rate of 13.1%. Overall reported COVID-19 diagnostic tests decreased to 10,815 from 11,931 during the previous week.

7-day case rate per 100,000 persons was 136.2, a decrease from the previous week's rate of 163.3. Erie County remains in a "medium" COVID-19 Community Level per CDC indicators. And, Erie County remains in "high" transmission per CDC community transmission metrics.

Buffalo city COVID-19 cases comprised 27.9% of new COVID-19 cases this past week. (Buffalo city population is 29.2% of all Erie County residents).

Erie County COVID-19 Wastewater Surveillance Data: See Figure 3. The most recent COVID-19 wastewater surveillance data showed SARS-CoV-2 viral particles in the top 60-79% of samples collected since 12/1/21 within the Amherst, Bird Island and City of Tonawanda (all 10/13) and Lackawanna and Big Sister Creek (all 10/16) sewersheds. Kenmore-Tonawanda (10/13) and the Southtowns (10/6) were in the 40-59% category.

The Bird Island (10/13) sewershed showed a 100-999% increase; sewersheds for the City of Tonawanda (10/13), Kenmore-Tonawanda (10/13), Lackawanna (10/16), Big Sister Creek (10/16) and Southtowns (10/6) showed a 10-99% increase; and, Amherst (10/13) showed a 1-9% increase. See <https://www.erie.gov/covid19-wastewater>

Erie County COVID-19 Hospitalization Data: See Figures 4a and 4b. NYSDOH publishes updated hospitalization data by region at <https://coronavirus.health.ny.gov/daily-hospitalization-summary>.

Erie County COVID-19 Vaccination Data: See Section 2. NYSDOH updates vaccine data daily. Demographic data: <https://coronavirus.health.ny.gov/demographic-vaccination-data>.

Erie County COVID-19 Mortality Data: Mortality data are updated through October 6, 2022 based on data available to ECDOH. More recent data will be reported when available. NYSDOH reports COVID-19 mortality data at <https://coronavirus.health.ny.gov/fatalities-0>. See Section 3.

CONTENTS

Section 1: COVID-19 Case Data

Figure 1: Confirmed COVID-19 Cases by Age Group & Gender (to date)	Page 1
Figure 2: Confirmed COVID-19 Cases by Age Group and Gender (latest week)	Page 1
Table 1: New COVID-19 Cases in the Past Seven Days	Page 1
Figure 3: Erie County COVID-19 Wastewater Surveillance	Page 2
Table 2: Confirmed COVID-19 Cases by ZIP Code	Page 3
Figures 4a and 4b: Erie County COVID-19 Hospitalizations	Page 5

Section 2: COVID-19 Vaccination Data

Table 3: Erie County COVID-19 Vaccination Rates by Age and ZIP Code	Page 6
---	--------

Section 3: COVID-19 Mortality Data

Tables 4 & 5: Erie County COVID-19 Deaths By Age Group	Page 8
Table 6: Erie County COVID-19 Deaths by Residence	Page 8

Section 1: Confirmed COVID-19 Cases

Figure 1

Confirmed COVID-19 Cases by Age Group and Gender (March 2020-present)

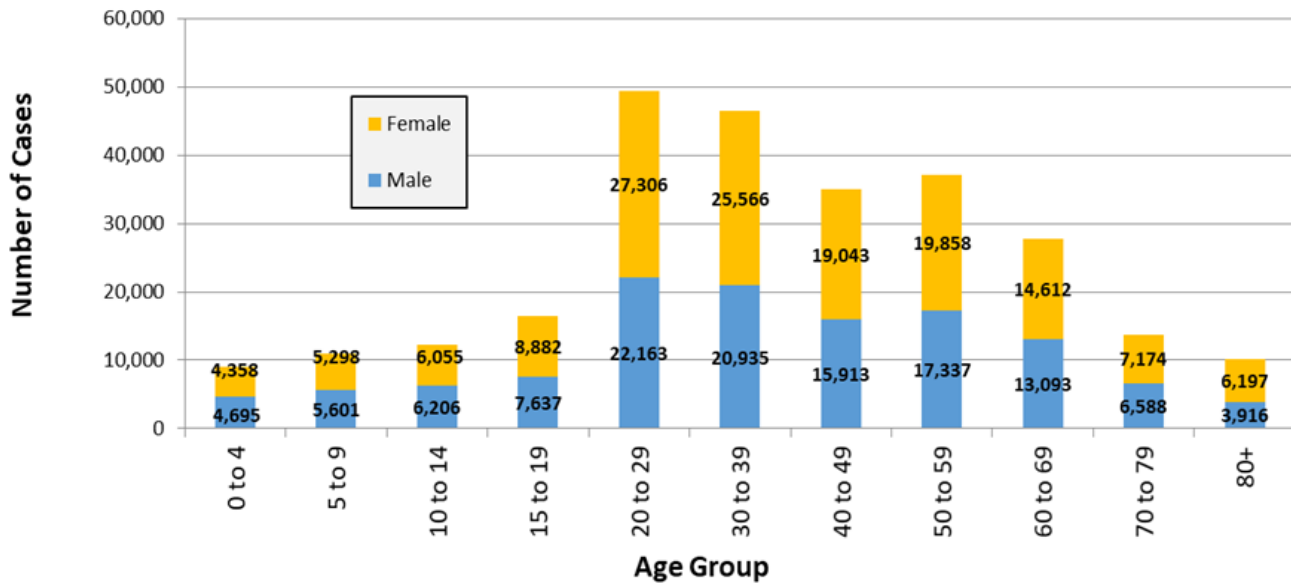


Figure 2

Confirmed COVID-19 Cases by Age Group (October 9-15, 2022)

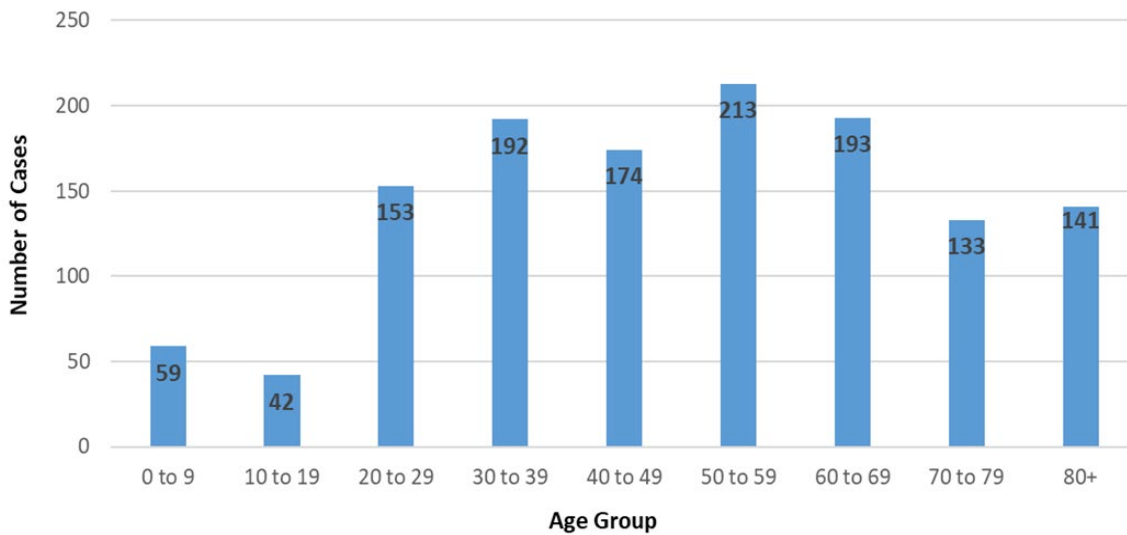


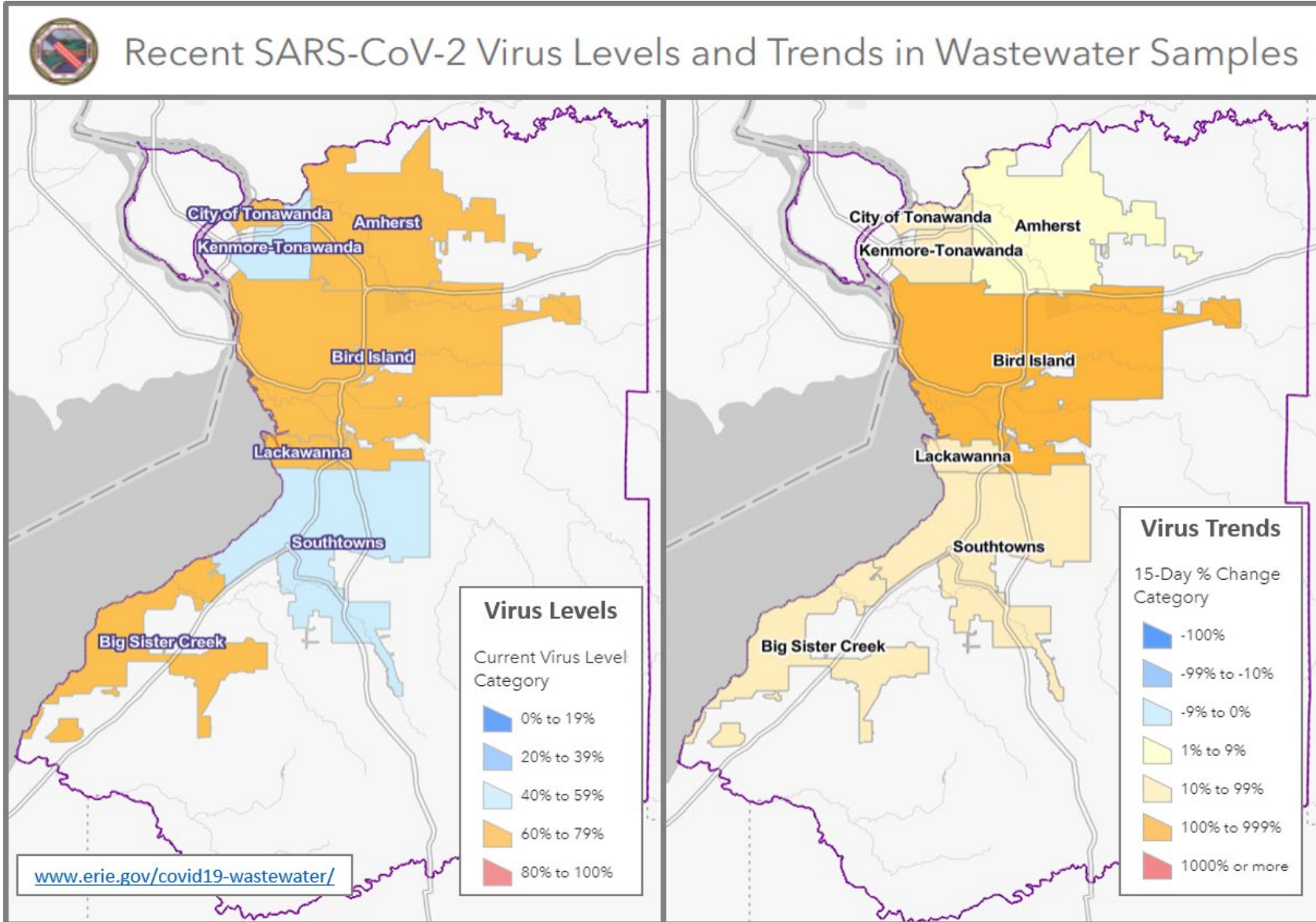
Table 1

New Cases in Past Seven Days, Past Six Weeks

Week Ending	New Cases in Past 7 Days	Total New Cases in the Past Seven Days per 100,000 Persons*
9/10/2022	1,306	136.9
9/17/2022	1,569	164.4
9/24/2022	1,581	165.7
10/1/2022	1,517	159.0
10/8/2022	1,558	163.3
10/15/2022	1,300	136.2

This metric shows trends over time.
*Population Source: 2020 U.S. Census Bureau

Figure 3: Erie County COVID-19 Wastewater Surveillance



Charts as of October 18, 2022

All data are provisional and represent data available at the time of the report.

Table 2

Confirmed COVID-19 Cases by ZIP Code

ZIP Code	City	Cases	Zip Code Population**	New Daily Cases per 100,000 Persons on 7-Day Rolling Average ¹	Total New Cases per 100,000 Persons in the Past 7 Days ²
14221	Amherst/Williamsville/Clarend	80	53,555	21.3	149.4
14075	Hamburg	74	41,937	25.2	176.5
14224	West Seneca	73	39,889	26.1	183.0
14150	Tonawanda	60	41,676	20.6	144.0
14217	Kenmore	55	23,480	33.5	234.2
14215	Buffalo (East)	51	39,999	18.2	127.5
14225	Cheektowaga	45	33,385	19.3	134.8
14226	Amherst (Snyder/Eggertsville)	44	29,267	21.5	150.3
14223	Tonawanda	39	22,665	24.6	172.1
14218	Lackawanna	36	19,039	27.0	189.1
14228	Amherst (Getzville)	36	20,857	24.7	172.6
14227	Cheektowaga	35	23,426	21.3	149.4
14220	Buffalo (South)	34	24,227	20.0	140.3
14072	Grand Island	32	20,374	22.4	157.1
14127	Orchard Park	32	29,961	15.3	106.8
14207	Buffalo (Black Rock/Riverside)	32	23,552	19.4	135.9
14211	Buffalo/Cheektowaga	31	22,611	19.6	137.1
14216	Buffalo (North)	31	22,431	19.7	138.2
14086	Lancaster	30	31,847	13.5	94.2
14051	Amherst (East)	29	19,533	21.2	148.5
14043	Depew	24	24,742	13.9	97.0
14052	Aurora	23	17,329	19.0	132.7
14213	Buffalo (West Side)	23	24,465	13.4	94.0
14214	Buffalo (University)	23	19,775	16.6	116.3
14219	Blasdell	21	11,536	26.0	182.0
14206	Buffalo (Kaisertown)	20	20,751	13.8	96.4
14201	Buffalo (Downtown)	17	11,549	21.0	147.2
14057	Eden	15	8,116	26.4	184.8
14068	Amherst (Getzville)	15	7,150	30.0	209.8
14204	Buffalo (East)	15	8,691	24.7	172.6
14210	Buffalo (South)	15	14,694	14.6	102.1
14001	Akron	14	9,464	x	x
14006	Angola	14	9,858	x	x
14212	Buffalo (Broadway)/Sloan	14	10,641	x	x
14222	Buffalo (Elmwood Village)	14	14,046	x	x
14085	Hamburg (Lake View)	13	7,353	x	x
14081	Irving	12	3,095	x	x
14091	Lawtons	11	1,079	x	x
14208	Buffalo (east)	11	11,125	x	x
14004	Alden	10	12,704	x	x

All data are provisional and represent data available at the time of the report.

14047	Derby	10	6,440	x	x
14141	Springville	10	7,728	x	x
14032	Clarence (North)	8	7,989	x	x
14209	Buffalo (Delaware)	8	7,926	x	x
14031	Clarence	7	9,392	x	x
14080	Holland	7	4,330	x	x
14203	Buffalo	7	1,618	x	x
14202	Buffalo (Downtown)	6	3,911	x	x
14070	Gowanda	5	6,732	x	x
14111	North Collins	5	3,352	x	x
14025	Boston	*	3,039	x	x
14026	Bowmansville	*	674	x	x
14030	Chaffee	*	1,807	x	x
14033	Colden	*	2,219	x	x
14034	Collins	*	2,742	x	x
14055	East Concord	*	1,405	x	x
14059	Elma	*	8,933	x	x
14069	Glenwood	*	844	x	x
14102	Marilla	*	1,281	x	x
14139	Wales	*	2,125	x	x
14170	West Falls	*	2,286	x	x
14231	Buffalo	*	n/a	x	x
14260-1426	Amherst (UB)	*	10,300	x	x
	All Erie County[†]	1,300	954,236	19.5	136.2

***Population Source: ZIP code data from U.S. Census Bureau, DP-1, General Population & Housing Characteristics*

ZCTAs are an approximation of mailing ZIP codes

Buffalo and Erie County from 2010 (U.S. Census Redistricting Data, PL 94-171) Summary File

¹ *Calculated by dividing total cases in past 7 days by 7, then dividing by ZIP code pop. & multiplying by 100,000*

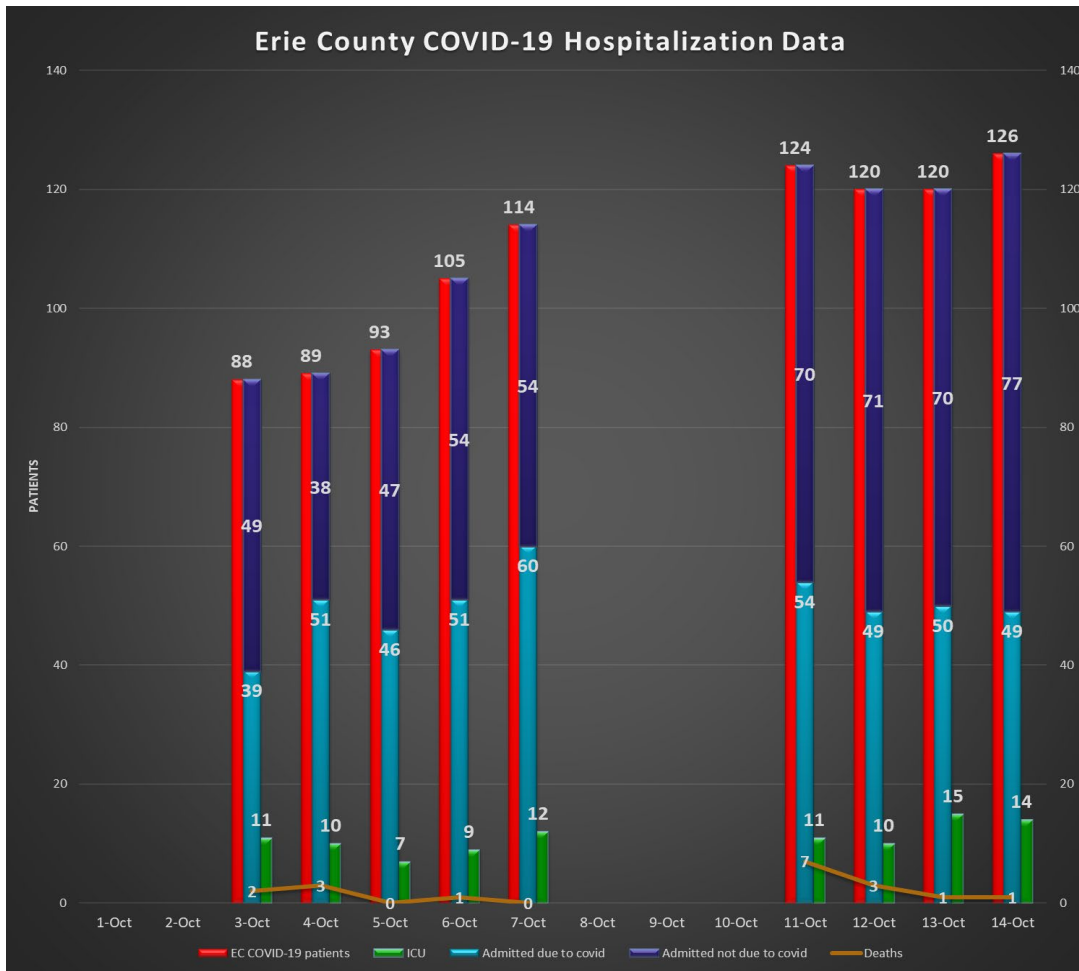
² *Calculated by dividing total cases in the past 7 days by the zip code population, and multiplying by 100,000*

[†] *Total Population Value for Erie County (954,236) from 2020 U.S. Census Bureau used to calculate 'All Erie County' daily and 7-day case rates*

The New York State Department of Health maintains a COVID-19 data dashboard with county-level reporting.

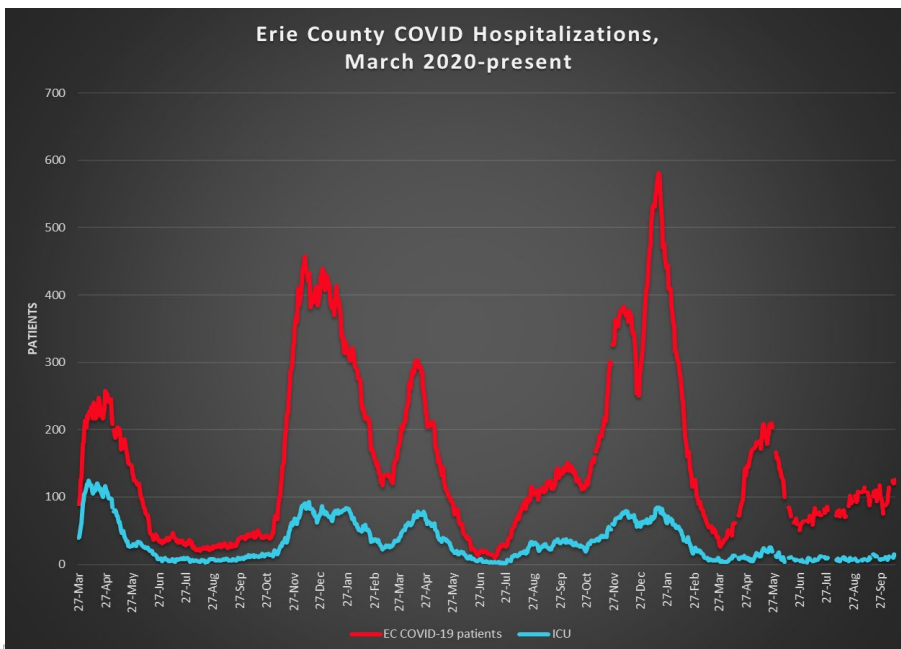
<https://coronavirus.health.ny.gov/covid-19-data-new-york>

Figure 4a



Most recent available data from NYSDOH included.

Figure 4b



Data provided by Erie County hospitals and NYSDOH. Patients may include residents from outside Erie County. See <https://coronavirus.health.ny.gov/daily-hospitalization-summary>

Section 2: COVID-19 Vaccine Information

Table 3

Erie County COVID-19 Vaccination Rates, Age & ZIP Code through October 17, 2022

ZIP Code	City	% of 0-19 population vaccinated (with at least 1 dose)	% of 20-34 population vaccinated (with at least 1 dose)	% of 35-64 population vaccinated (with at least 1 dose)	% of 65+ population vaccinated (with at least 1 dose)	% of 20+ Population Vaccinated (with at least 1 dose)
14112	North Evans	n/a	31.1%	n/a	46.7%	40.0%
14034	Collins	43.0%	30.1%	35.6%	89.7%	42.0%
14061	Farnham	9.8%	20.0%	48.4%	100.0%	43.8%
14070	Gowanda	31.7%	31.5%	46.4%	74.8%	48.1%
14035	Collins Center	7.8%	100.0%	39.5%	100.0%	51.9%
14030	Chaffee	20.0%	54.8%	53.5%	80.7%	59.9%
14170	West Falls	32.5%	74.9%	49.0%	100.0%	61.0%
14111	North Collins	32.5%	56.8%	60.8%	100.0%	65.9%
14004	Alden	29.7%	54.1%	63.4%	85.0%	66.6%
14025	Boston	37.8%	86.7%	63.0%	68.8%	68.3%
14055	East Concord	33.5%	67.9%	58.9%	100.0%	68.5%
14080	Holland	31.4%	59.3%	61.6%	95.6%	68.8%
14210	Buffalo	38.9%	58.0%	75.1%	83.6%	70.5%
14206	Buffalo	42.8%	64.4%	75.2%	78.5%	72.9%
14001	Akron	39.1%	61.3%	67.1%	100.0%	73.7%
14208	Buffalo	37.3%	62.3%	86.5%	70.5%	74.0%
14222	Buffalo (Elmwood Village)	40.9%	61.0%	90.2%	81.0%	74.5%
14219	Blasdell	39.2%	61.0%	74.0%	97.1%	75.2%
14091	Lawtons	44.3%	45.2%	86.3%	89.6%	76.2%
14047	Derby	38.7%	67.2%	69.8%	100.0%	76.2%
14102	Marilla	33.7%	52.6%	81.8%	94.6%	77.1%
14006	Angola	35.6%	67.7%	75.7%	86.3%	77.2%
14141	Springville	33.0%	72.1%	70.7%	97.3%	77.8%
14059	Elma	39.0%	70.2%	74.6%	88.7%	78.0%
14215	Buffalo	38.3%	66.7%	79.3%	100.0%	78.1%
14204	Buffalo	39.0%	76.0%	76.7%	89.1%	78.9%
14218	Lackawanna	32.2%	62.4%	80.4%	98.2%	79.0%
14069	Glenwood	37.2%	88.8%	70.5%	92.0%	79.1%
14139	South Wales	36.5%	95.3%	69.0%	100.0%	80.5%
14211	Buffalo	46.7%	76.4%	80.7%	87.5%	80.5%
14057	Eden	46.3%	88.2%	71.2%	100.0%	80.8%
14207	Buffalo	44.0%	63.0%	94.7%	90.3%	81.3%
14216	Buffalo	51.5%	69.7%	84.5%	100.0%	81.6%
14043	Depew	44.5%	70.1%	81.8%	93.6%	81.7%
14220	Buffalo	45.0%	74.2%	84.0%	97.9%	83.6%
14209	Buffalo	37.7%	75.0%	84.6%	100.0%	83.7%
14225	Cheektowaga	47.9%	66.9%	91.7%	92.1%	83.7%
14052	East Aurora	65.5%	84.2%	76.8%	100.0%	84.1%

All data are provisional and represent data available at the time of the report.

<https://covid19vaccine.health.ny.gov/vaccine-demographic-data>

14150	Tonawanda	48.0%	77.4%	83.1%	94.3%	84.6%
14214	Buffalo	47.3%	79.1%	86.9%	94.0%	84.7%
14169	Wales Center	65.5%	n/a	77.2%	100.0%	84.9%
14031	Clarence	53.8%	75.0%	80.0%	100.0%	84.9%
14224	West Seneca	51.2%	79.0%	80.1%	100.0%	85.2%
14217	Kenmore	57.5%	88.5%	80.2%	93.7%	85.5%
14212	Buffalo	47.1%	83.9%	86.9%	85.5%	85.8%
14227	Cheektowaga	57.8%	74.5%	82.6%	100.0%	85.9%
14032	Clarence Center	55.4%	100.0%	79.5%	100.0%	86.4%
14201	Buffalo	35.8%	85.9%	83.4%	97.9%	86.5%
14213	Buffalo	38.0%	81.9%	90.5%	93.1%	87.2%
14075	Hamburg	54.9%	89.2%	81.0%	100.0%	87.7%
14228	Amherst (Getzville)	58.3%	80.3%	91.7%	95.0%	87.9%
14202	Buffalo	46.4%	71.9%	100.0%	100.0%	88.3%
14072	Grand Island	54.6%	92.1%	83.1%	100.0%	88.8%
14051	East Amherst	67.3%	100.0%	82.2%	100.0%	88.9%
14226	Amherst (Snyder/Eggertsville)	57.8%	88.0%	87.9%	100.0%	90.5%
14223	Tonawanda	50.3%	86.8%	88.4%	100.0%	90.7%
14127	Orchard Park	61.2%	100.0%	84.4%	100.0%	91.4%
14086	Lancaster	57.1%	93.5%	87.9%	100.0%	91.7%
14026	Bowmansville	100.0%	100.0%	88.6%	100.0%	93.0%
14221	Amherst/Williamsville/Clarence	66.9%	100.0%	88.9%	97.6%	93.7%
14033	Colden	58.5%	100.0%	94.5%	97.2%	95.8%
14085	Lake View	60.6%	90.4%	99.8%	95.8%	96.9%
14068	Getzville	76.1%	100.0%	100.0%	93.8%	97.5%
14134	Sardinia	48.6%	100.0%	100.0%	100.0%	100.0%
14203	Buffalo	76.0%	100.0%	100.0%	100.0%	100.0%
Total		48.2%	75.8%	82.0%	95.5%	83.4%

All data are provisional and represent data available at the time of the report.

<https://covid19vaccine.health.ny.gov/vaccine-demographic-data>

Section 3: COVID-19 Mortality Data

Table 4

Erie County COVID-19 Deaths by Age Group (January - December 2021)

Age Group	Jan	Feb	Mar	Apr	May	Jun	Jul	Aug	Sep	Oct	Nov	Dec	Total
<40	3	4	0	4	2	0	1	1	0	3	4	3	25
40 to 49	4	3	1	8	2	0	1	1	1	0	3	7	31
50 to 59	8	11	5	7	5	4	1	6	4	11	12	17	91
60 to 69	31	22	6	24	11	5	1	6	11	15	14	50	196
70 to 79	60	34	16	30	21	4	7	10	15	14	24	46	281
80+	163	62	29	27	24	5	1	17	24	38	40	66	496
Total # of Deaths	269	136	57	100	65	18	12	41	55	81	97	189	1,120
Ave. Death Age	81	76	77	71	74	70	70	74	77	76	73	73	76

Table 5

Erie County COVID-19 Deaths by Age Group (January 1-October 6, 2022)

Age Group	Jan	Feb	Mar	Apr	May	Jun	Jul	Aug	Sept	Oct	Total
<40	7	2	0	0	1	1	0	2	0	0	13
40 to 49	9	1	1	1	1	0	1	0	0	0	14
50 to 59	19	9	2	0	1	1	0	1	5	0	38
60 to 69	49	20	3	4	7	7	2	2	4	0	98
70 to 79	57	25	3	7	17	5	7	8	3	1	133
80+	90	40	10	17	37	12	10	11	13	2	242
Total # of Deaths	231	97	19	29	64	26	20	24	25	3	538
Ave. Death Age	74	76	78	80	81	77	79	76	77	83	76

2020 total deaths	1,276
2021 total deaths	1,120
2022 deaths to date	538
Total:	2,934

Table 6

Erie County COVID-19 Deaths by Residence

Residence	Fatalities	% of Fatalities	% of Population*
Buffalo	770	26.2%	29.2%
Erie County Excl. Buffalo	2,164	73.8%	70.8%
All of Erie County	2,934	100.0%	100.0%

*Population Source: Prepared from 2020 Census Bureau

Most recent data provided.