



**Erie County  
Department of  
Health**



**Public Health**  
Prevent. Promote. Protect.

## COVID-19 Data Update

Week ending December 10, 2022

All data are provisional.

975 new COVID-19 cases were recorded for the week ending December 10, 2022. This is a 10% increase from the previous week's total of 889 cases and is the second consecutive week of increasing reported cases. These data do not include at-home tests. The weekly COVID-19 positivity rate increased from 10.2% to 12.1%. 8,077 overall reported COVID-19 diagnostic tests were similar to the previous week's total of 8,756 tests.

7-day case rate per 100,000 persons was 102, an increase from the previous week's rate of 93. Erie County remains in a "medium" COVID-19 Community Level per CDC indicators. CDC community transmission metrics are considered "high" due to the PCR test positivity rate exceeding 10%.

Buffalo city COVID-19 cases comprised 33.1% of new COVID-19 cases this past week. (Buffalo city population is 29.2% of all Erie County residents).

Erie County COVID-19 Wastewater Surveillance Data: See <https://www.erie.gov/covid19-wastewater>. All wastewater data are through 12/8/2022. The most recent COVID-19 wastewater surveillance data through showed SARS-CoV-2 viral particles in the top 60-79% of samples collected since 12/1/21 within Big Sister Creek, Bird Island and Southtowns sewersheds. Amherst, City of Tonawanda, Kenmore-Tonawanda and Lackawanna were in the top 80-100% of samples collected.

Bird Island, City of Tonawanda, Lackawanna and Southtowns showed a 0-9% decrease in the past two weeks. Amherst, Big Sister Creek and Kenmore-Tonawanda showed a 10-99% increase in the past two weeks.

Erie County COVID-19 Hospitalization Data: See Figures 4a and 4b. NYSDOH publishes updated hospitalization data by region at <https://coronavirus.health.ny.gov/daily-hospitalization-summary>.

Erie County COVID-19 Vaccination Data: See Section 2. NYSDOH updates vaccine data daily. Demographic data: <https://coronavirus.health.ny.gov/demographic-vaccination-data>.

Erie County COVID-19 Mortality Data: Mortality data are updated through December 1, 2022 based on data available to ECDOH. NYSDOH reports COVID-19 mortality data at <https://coronavirus.health.ny.gov/fatalities-0>. See Section 3.

### CONTENTS

#### **Section 1: COVID-19 Case Data**

Figure 1: Confirmed COVID-19 Cases by Age Group & Gender (to date)	Page 1
Figure 2: Confirmed COVID-19 Cases by Age Group and Gender (latest week)	Page 1
Table 1: New COVID-19 Cases in the Past Seven Days	Page 1
Figure 3: Erie County COVID-19 Wastewater Surveillance	Page 2
Table 2: Confirmed COVID-19 Cases by ZIP Code	Page 3
Figures 4a and 4b: Erie County COVID-19 Hospitalizations	Page 5

#### **Section 2: COVID-19 Vaccination Data**

Table 3: Erie County COVID-19 Vaccination Rates by Age and ZIP Code	Page 6
---	--------

#### **Section 3: COVID-19 Mortality Data**

Tables 4 & 5: Erie County COVID-19 Deaths By Age Group	Page 8
Table 6: Erie County COVID-19 Deaths by Residence	Page 8

## Section 1: Confirmed COVID-19 Cases

Figure 1

**Confirmed COVID-19 Cases by Age Group (March 2020-present)**

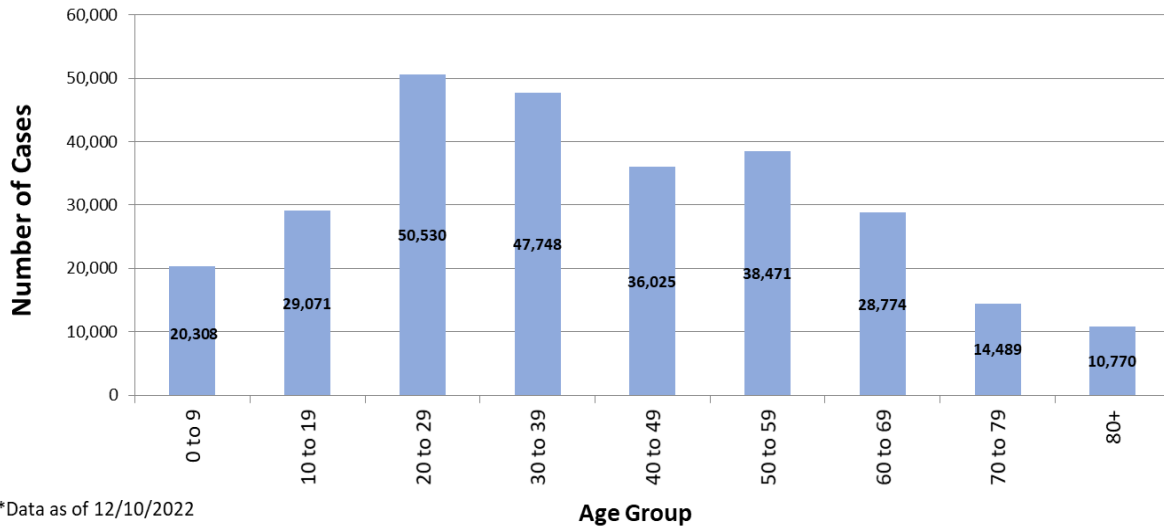


Figure 2

**Confirmed COVID-19 Cases by Age Group (December 4-10, 2022)**

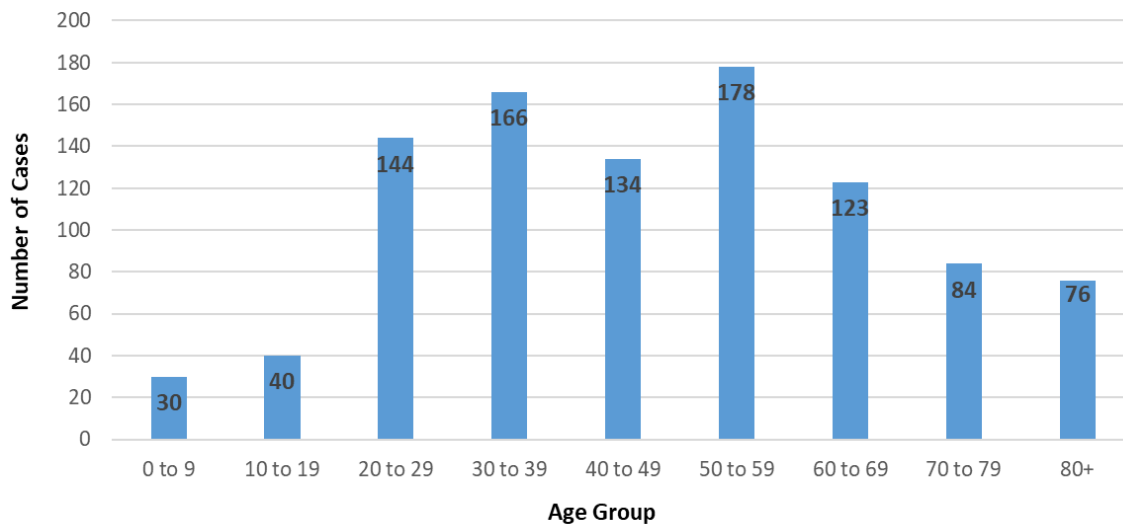


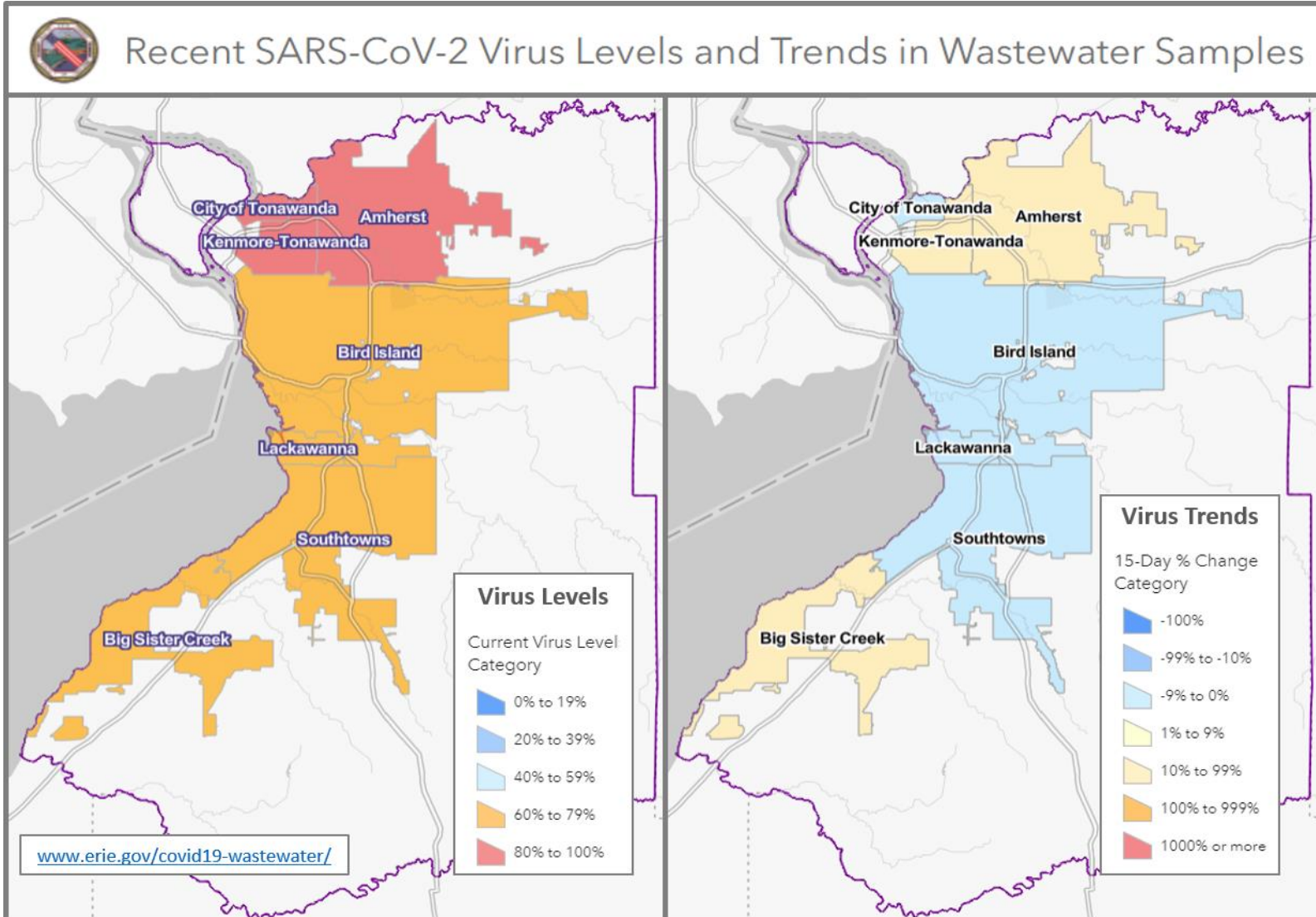
Table 1

**New Cases in Past Seven Days, Past Six Weeks**

Week Ending	New Cases in Past 7 Days	Total New Cases in the Past Seven Days per 100,000 Persons*
11/5/2022	1,206	126.4
11/12/2022	907	95.0
11/19/2022	637	66.8
11/26/2022	524	54.9
12/3/2022	889	93.2
12/10/2022	975	102.2

This metric shows trends over time.  
\*Population Source: 2020 U.S. Census Bureau

Figure 3: Erie County COVID-19 Wastewater Surveillance  
Data through 12/8/2022



All data are provisional and represent data available at the time of the report.

Table 2

**Confirmed COVID-19 Cases by ZIP Code**

ZIP Code	City	Cases	Zip Code Population**	New Daily Cases per 100,000 Persons on 7-Day Rolling Average <sup>1</sup>	Total New Cases per 100,000 Persons in the Past 7 Days <sup>2</sup>
14221	Amherst/Williamsville/Clarence	58	53,555	15.5	108.3
14215	Buffalo (East)	53	39,999	18.9	132.5
14227	Cheektowaga	50	23,426	30.5	213.4
14224	West Seneca	48	39,889	17.2	120.3
14220	Buffalo (South)	44	24,227	25.9	181.6
14225	Cheektowaga	44	33,385	18.8	131.8
14086	Lancaster	43	31,847	19.3	135.0
14150	Tonawanda	38	41,676	13.0	91.2
14127	Orchard Park	31	29,961	14.8	103.5
14226	Amherst (Snyder/Eggertsville)	31	29,267	15.1	105.9
14217	Kenmore	30	23,480	18.3	127.8
14075	Hamburg	28	41,937	9.5	66.8
14072	Grand Island	27	20,374	18.9	132.5
14206	Buffalo (Kaisertown)	26	20,751	17.9	125.3
14214	Buffalo (University)	26	19,775	18.8	131.5
14216	Buffalo (North)	25	22,431	15.9	111.5
14213	Buffalo (West Side)	23	24,465	13.4	94.0
14228	Amherst (Getzville)	23	20,857	15.8	110.3
14211	Buffalo/Cheektowaga	22	22,611	13.9	97.3
14223	Tonawanda	22	22,665	13.9	97.1
14207	Buffalo (Black Rock/Riverside)	20	23,552	12.1	84.9
14218	Lackawanna	19	19,039	14.3	99.8
14043	Depew	17	24,742	9.8	68.7
14051	Amherst (East)	17	19,533	12.4	87.0
14210	Buffalo (South)	17	14,694	16.5	115.7
14212	Buffalo (Broadway)/Sloan	14	10,641	x	x
14052	Aurora	13	17,329	x	x
14201	Buffalo (Downtown)	13	11,549	x	x
14208	Buffalo (east)	12	11,125	x	x
14219	Blasdell	11	11,536	x	x
14222	Buffalo (Elmwood Village)	10	14,046	x	x
14031	Clarence	9	9,392	x	x
14141	Springville	9	7,728	x	x
14059	Elma	8	8,933	x	x
14068	Amherst (Getzville)	8	7,150	x	x
14006	Angola	7	9,858	x	x
14032	Clarence (North)	7	7,989	x	x
14204	Buffalo (East)	7	8,691	x	x
14209	Buffalo (Delaware)	7	7,926	x	x
14004	Alden	6	12,704	x	x

All data are provisional and represent data available at the time of the report.

14202	Buffalo (Downtown)	6	3,911	x	x
14057	Eden	5	8,116	x	x
14111	North Collins	5	3,352	x	x
14001	Akron	*	9,464	x	x
14025	Boston	*	3,039	x	x
14026	Bowmansville	*	674	x	x
14030	Chaffee	*	1,807	x	x
14033	Colden	*	2,219	x	x
14034	Collins	*	2,742	x	x
14047	Derby	*	6,440	x	x
14055	East Concord	*	1,405	x	x
14069	Glenwood	*	844	x	x
14070	Gowanda	*	6,732	x	x
14080	Holland	*	4,330	x	x
14081	Irving	*	3,095	x	x
14085	Hamburg (Lake View)	*	7,353	x	x
14091	Lawtons	*	1,079	x	x
14102	Marilla	*	1,281	x	x
14139	Wales	*	2,125	x	x
14170	West Falls	*	2,286	x	x
14203	Buffalo	*	1,618	x	x
14231	Buffalo	*	n/a	x	x
14260-1426	Amherst (UB)	*	10,300	x	x
	<b>All Erie County<sup>†</sup></b>	<b>975</b>	<b>954,236</b>	<b>14.6</b>	<b>102.2</b>

*\*\*Population Source: ZIP code data from U.S. Census Bureau, DP-1, General Population & Housing Characteristics*

*ZCTAs are an approximation of mailing ZIP codes*

*Buffalo and Erie County from 2010 (U.S. Census Redistricting Data, PL 94-171) Summary File*

<sup>1</sup> *Calculated by dividing total cases in past 7 days by 7, then dividing by ZIP code pop. & multiplying by 100,000*

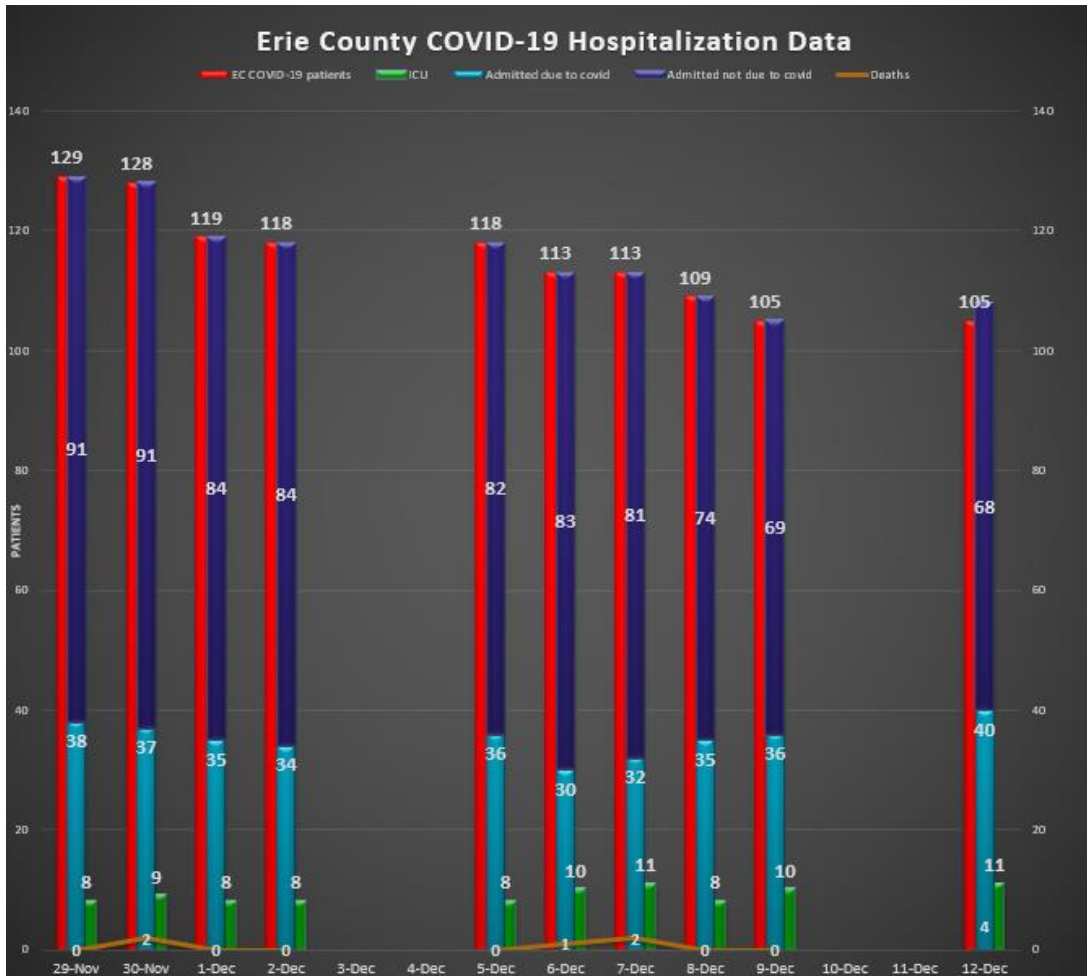
<sup>2</sup> *Calculated by dividing total cases in the past 7 days by the zip code population, and multiplying by 100,000*

<sup>†</sup> *Total Population Value for Erie County (954,236) from 2020 U.S. Census Bureau used to calculate 'All Erie County' daily and 7-day case rates*

The New York State Department of Health maintains a COVID-19 data dashboard with county-level reporting.

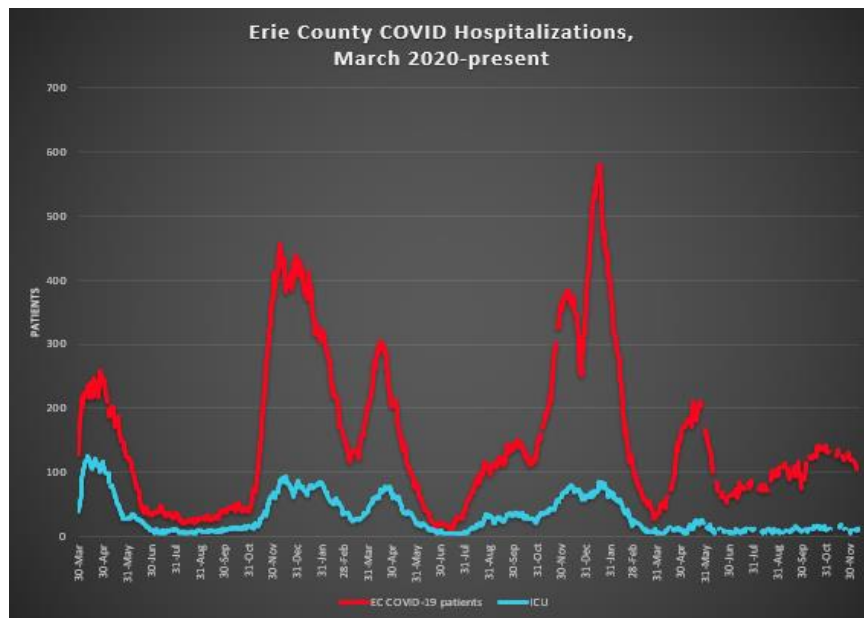
<https://coronavirus.health.ny.gov/covid-19-data-new-york>

Figure 4a



Most recent available data from NYSDOH included.

Figure 4b



Data provided by Erie County hospitals and NYSDOH. Patients may include residents from outside Erie County. See <https://coronavirus.health.ny.gov/daily-hospitalization-summary>

**Section 2: COVID-19 Vaccine Information**

Table 3

*Erie County COVID-19 Vaccination Rates, Age & ZIP Code through December 12, 2022*

ZIP Code	City	% of 0-19 population vaccinated (with at least 1 dose)	% of 20-34 population vaccinated (with at least 1 dose)	% of 35-64 population vaccinated (with at least 1 dose)	% of 65+ population vaccinated (with at least 1 dose)	% of 20+ Population Vaccinated (with at least 1 dose)
14112	North Evans	n/a	28.9%	n/a	48.3%	40.0%
14034	Collins	43.7%	29.6%	36.2%	90.8%	42.4%
14061	Farnham	9.8%	20.0%	47.7%	100.0%	43.5%
14070	Gowanda	31.9%	31.4%	46.3%	74.6%	47.9%
14035	Collins Center	11.8%	100.0%	41.9%	100.0%	53.7%
14030	Chaffee	20.7%	55.2%	53.9%	78.4%	59.7%
14170	West Falls	31.8%	73.1%	48.9%	100.0%	60.6%
14111	North Collins	32.6%	56.8%	60.5%	100.0%	65.7%
14004	Alden	30.1%	54.2%	63.6%	85.2%	66.8%
14025	Boston	38.5%	87.7%	63.0%	68.9%	68.5%
14080	Holland	31.6%	59.9%	61.9%	95.1%	69.0%
14055	East Concord	34.6%	67.4%	60.3%	100.0%	69.3%
14210	Buffalo	39.3%	58.4%	75.3%	83.8%	70.8%
14206	Buffalo	43.7%	64.9%	75.2%	78.4%	73.0%
14001	Akron	39.9%	61.8%	67.9%	100.0%	74.3%
14208	Buffalo	37.7%	62.5%	86.8%	71.0%	74.3%
14219	Blasdell	39.9%	61.1%	73.9%	96.9%	75.2%
14222	Buffalo (Elmwood Village)	42.1%	61.9%	92.0%	81.0%	75.6%
14047	Derby	39.1%	68.0%	69.9%	100.0%	76.5%
14091	Lawtons	46.8%	46.6%	86.8%	91.6%	77.3%
14006	Angola	35.8%	67.9%	75.7%	86.5%	77.3%
14102	Marilla	35.9%	55.4%	81.4%	94.2%	77.5%
14059	Elma	39.4%	70.0%	74.9%	88.4%	78.1%
14141	Springville	33.5%	72.8%	70.7%	97.8%	78.1%
14215	Buffalo	39.4%	67.4%	79.5%	100.0%	78.4%
14069	Glenwood	37.2%	89.8%	70.5%	90.9%	79.0%
14204	Buffalo	40.5%	76.4%	76.9%	89.7%	79.3%
14218	Lackawanna	32.3%	63.0%	80.8%	98.3%	79.5%
14139	South Wales	36.8%	94.9%	67.9%	100.0%	79.8%
14211	Buffalo	48.1%	77.0%	80.6%	87.2%	80.6%
14057	Eden	46.6%	87.9%	71.0%	100.0%	80.7%
14207	Buffalo	45.1%	63.4%	94.5%	90.0%	81.3%
14216	Buffalo	52.3%	70.5%	84.4%	100.0%	81.8%
14043	Depew	45.3%	70.8%	81.9%	93.6%	81.9%
14220	Buffalo	45.2%	74.4%	83.9%	97.7%	83.6%
14225	Cheektowaga	48.7%	67.1%	91.7%	92.3%	83.8%
14209	Buffalo	38.6%	75.7%	85.7%	100.0%	84.4%
14052	East Aurora	66.1%	84.4%	77.3%	100.0%	84.4%

All data are provisional and represent data available at the time of the report.

<https://covid19vaccine.health.ny.gov/vaccine-demographic-data>

14169	Wales Center	58.6%	n/a	77.2%	100.0%	84.9%
14214	Buffalo	48.2%	79.6%	86.9%	94.1%	84.9%
14150	Tonawanda	48.9%	78.1%	83.5%	94.5%	85.0%
14031	Clarence	55.0%	76.4%	80.3%	100.0%	85.3%
14224	West Seneca	51.7%	79.7%	80.4%	100.0%	85.5%
14212	Buffalo	48.6%	83.7%	87.4%	84.8%	85.9%
14217	Kenmore	58.4%	88.9%	80.7%	93.9%	86.0%
14227	Cheektowaga	58.6%	74.8%	83.1%	100.0%	86.2%
14032	Clarence Center	56.0%	100.0%	79.9%	100.0%	86.7%
14213	Buffalo	38.8%	81.7%	89.9%	92.7%	86.8%
14201	Buffalo	37.2%	86.3%	83.9%	98.8%	87.0%
14075	Hamburg	55.8%	89.7%	81.4%	100.0%	88.0%
14228	Amherst (Getzville)	59.6%	81.0%	92.3%	95.8%	88.6%
14202	Buffalo	45.7%	73.6%	100.0%	100.0%	89.0%
14072	Grand Island	55.3%	92.9%	83.3%	100.0%	89.1%
14051	East Amherst	68.4%	100.0%	82.9%	100.0%	89.4%
14226	Amherst (Snyder/Eggertsville)	58.3%	88.2%	88.1%	100.0%	90.7%
14223	Tonawanda	51.0%	86.9%	88.6%	100.0%	90.9%
14127	Orchard Park	61.8%	100.0%	84.6%	100.0%	91.5%
14086	Lancaster	57.8%	94.3%	88.1%	100.0%	92.1%
14026	Bowmansville	100.0%	100.0%	89.9%	100.0%	93.8%
14221	Amherst/Williamsville/Clarence	67.8%	100.0%	89.5%	98.5%	94.3%
14033	Colden	59.6%	100.0%	94.3%	98.3%	96.1%
14085	Lake View	61.0%	91.5%	99.6%	95.4%	96.9%
14068	Getzville	77.8%	100.0%	100.0%	93.8%	97.5%
14134	Sardinia	48.6%	100.0%	100.0%	100.0%	100.0%
<b>Total</b>		<b>49.0%</b>	<b>76.3%</b>	<b>82.2%</b>	<b>95.6%</b>	<b>83.7%</b>

All data are provisional and represent data available at the time of the report.

<https://covid19vaccine.health.ny.gov/vaccine-demographic-data>



## Section 3: COVID-19 Mortality Data

Table 4

### Erie County COVID-19 Deaths by Age Group (January - December 2021)

Age Group	Jan	Feb	Mar	Apr	May	Jun	Jul	Aug	Sep	Oct	Nov	Dec	Total
<40	3	4	0	4	2	0	1	1	0	3	4	3	25
40 to 49	4	3	1	8	2	0	1	1	1	0	3	7	31
50 to 59	8	11	5	7	5	4	1	6	4	11	12	17	91
60 to 69	31	22	6	24	11	5	1	6	11	15	14	50	196
70 to 79	60	34	16	30	21	4	7	10	15	14	24	46	281
80+	163	62	29	27	24	5	1	17	24	38	40	66	496
<b>Total # of Deaths</b>	<b>269</b>	<b>136</b>	<b>57</b>	<b>100</b>	<b>65</b>	<b>18</b>	<b>12</b>	<b>41</b>	<b>55</b>	<b>81</b>	<b>97</b>	<b>189</b>	<b>1,120</b>
<b>Ave. Death Age</b>	<b>81</b>	<b>76</b>	<b>77</b>	<b>71</b>	<b>74</b>	<b>70</b>	<b>70</b>	<b>74</b>	<b>77</b>	<b>76</b>	<b>73</b>	<b>73</b>	<b>76</b>

Table 5

### Erie County COVID-19 Deaths by Age Group (January 1-December 1, 2022)

Age Group	Jan	Feb	Mar	Apr	May	Jun	Jul	Aug	Sept	Oct	Nov	Dec	Total
<40	7	2	0	0	1	1	0	2	0	0	0	0	13
40 to 49	9	1	1	1	1	0	1	0	0	0	0	0	14
50 to 59	19	9	2	0	1	1	0	1	5	1	1	0	40
60 to 69	49	20	3	4	7	7	2	2	4	3	3	0	104
70 to 79	57	25	3	7	17	5	7	8	3	9	10	0	151
80+	90	40	10	17	37	12	10	11	13	30	19	1	290
<b>Total # of Deaths</b>	<b>231</b>	<b>97</b>	<b>19</b>	<b>29</b>	<b>64</b>	<b>26</b>	<b>20</b>	<b>24</b>	<b>25</b>	<b>43</b>	<b>33</b>	<b>1</b>	<b>612</b>
<b>Ave. Death Age</b>	<b>74</b>	<b>76</b>	<b>78</b>	<b>80</b>	<b>81</b>	<b>77</b>	<b>79</b>	<b>76</b>	<b>77</b>	<b>84</b>	<b>81</b>	<b>-</b>	<b>77</b>

2020 total deaths	1,276
2021 total deaths	1,120
2022 deaths to date	612
<b>Total:</b>	<b>3,008</b>

Table 6

### Erie County COVID-19 Deaths by Residence

Residence	Fatalities	% of Fatalities	% of Population*
Buffalo	783	26.1%	29.2%
Erie County Excl. Buffalo	2,225	74.0%	70.8%
<b>All of Erie County</b>	<b>3,008</b>	<b>100.0%</b>	<b>100.0%</b>

\*Population Source: Prepared from 2020 Census Bureau

**Most recent data provided.**