



**Erie County
Department of
Health**



Public Health
Prevent. Promote. Protect.

COVID-19 Data Update

Week ending December 17, 2022

All data are provisional.

NOTE: This will be the last weekly COVID-19 data report for 2022. We will resume reporting in January 2023 with monthly reports.

1,378 new COVID-19 cases were recorded for the week ending December 17, 2022. This is a 40% increase from the previous week's total of 975 cases and is the third consecutive week of increasing reported cases. These data do not include at-home tests. The weekly COVID-19 positivity rate increased from 12.1% to 17.4%. 7,843 overall reported COVID-19 diagnostic tests were similar to the previous week's total of 8,077 tests.

7-day case rate per 100,000 persons was 143, an increase from the previous week's rate of 102. Erie County remains in a "medium" COVID-19 Community Level per CDC indicators. CDC community transmission metrics are considered "high" due to the PCR test positivity rate exceeding 10%.

Buffalo city COVID-19 cases comprised 31% of new COVID-19 cases this past week. (Buffalo city population is 29.2% of all Erie County residents).

Erie County COVID-19 Wastewater Surveillance Data: See <https://www.erie.gov/covid19-wastewater>. All wastewater data are through 12/15/2022. The most recent COVID-19 wastewater surveillance data through showed SARS-CoV-2 viral particles in the top 60-79% of samples collected since 12/1/21 within Bird Island and Lackawanna sewersheds. Amherst, Big Sister, City of Tonawanda, Kenmore-Tonawanda and Southtowns were in the top 80-100% of samples collected.

Bird Island showed a 0-9% decrease in the past two weeks. Amherst, Big Sister Creek, Kenmore-Tonawanda, Lackawanna and Southtowns showed a 10-99% increase in the past two weeks. City of Tonawanda showed a 100% to 999% increase.

Erie County COVID-19 Hospitalization Data: See Figures 4a and 4b. NYSDOH publishes updated hospitalization data by region at <https://coronavirus.health.ny.gov/daily-hospitalization-summary>.

Erie County COVID-19 Vaccination Data: See Section 2. NYSDOH updates vaccine data daily. Demographic data: <https://coronavirus.health.ny.gov/demographic-vaccination-data>.

CONTENTS

Section 1: COVID-19 Case Data

Figure 1: Confirmed COVID-19 Cases by Age Group & Gender (to date)	Page 1
Figure 2: Confirmed COVID-19 Cases by Age Group and Gender (latest week)	Page 1
Table 1: New COVID-19 Cases in the Past Seven Days	Page 1
Figure 3: Erie County COVID-19 Wastewater Surveillance	Page 2
Table 2: Confirmed COVID-19 Cases by ZIP Code	Page 3
Figures 4a and 4b: Erie County COVID-19 Hospitalizations	Page 5

Section 2: COVID-19 Vaccination Data

Table 3: Erie County COVID-19 Vaccination Rates by Age and ZIP Code	Page 6
---	--------

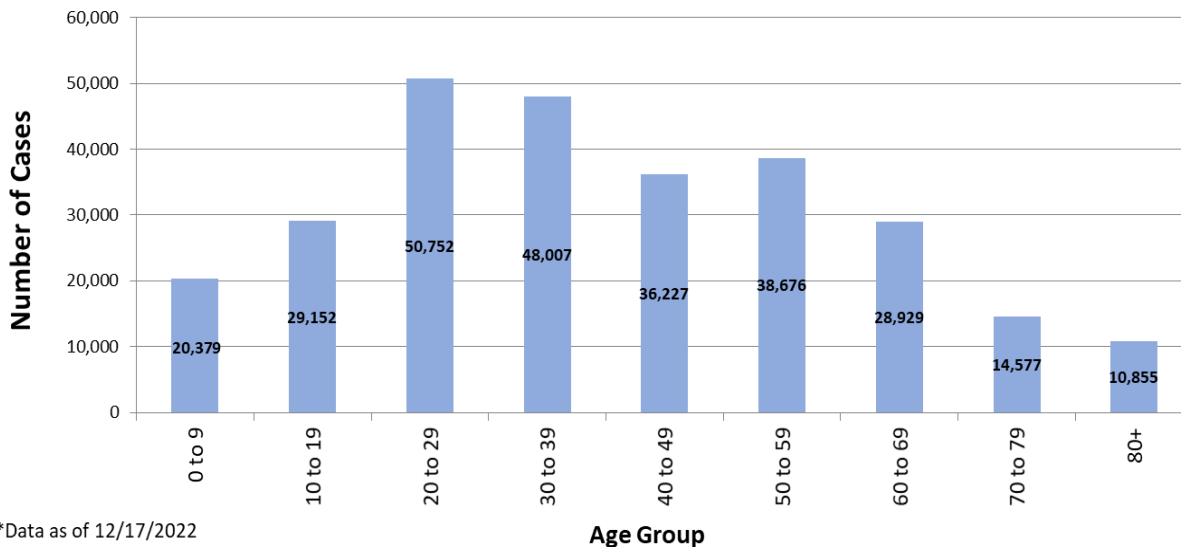
Section 3: COVID-19 Mortality Data

Tables 4 & 5: Erie County COVID-19 Deaths By Age Group	Page 8
Table 6: Erie County COVID-19 Deaths by Residence	Page 8

Section 1: Confirmed COVID-19 Cases

Figure 1

Confirmed COVID-19 Cases by Age Group (March 2020-present)



*Data as of 12/17/2022

Figure 2

Confirmed COVID-19 Cases by Age Group (December 11-17, 2022)

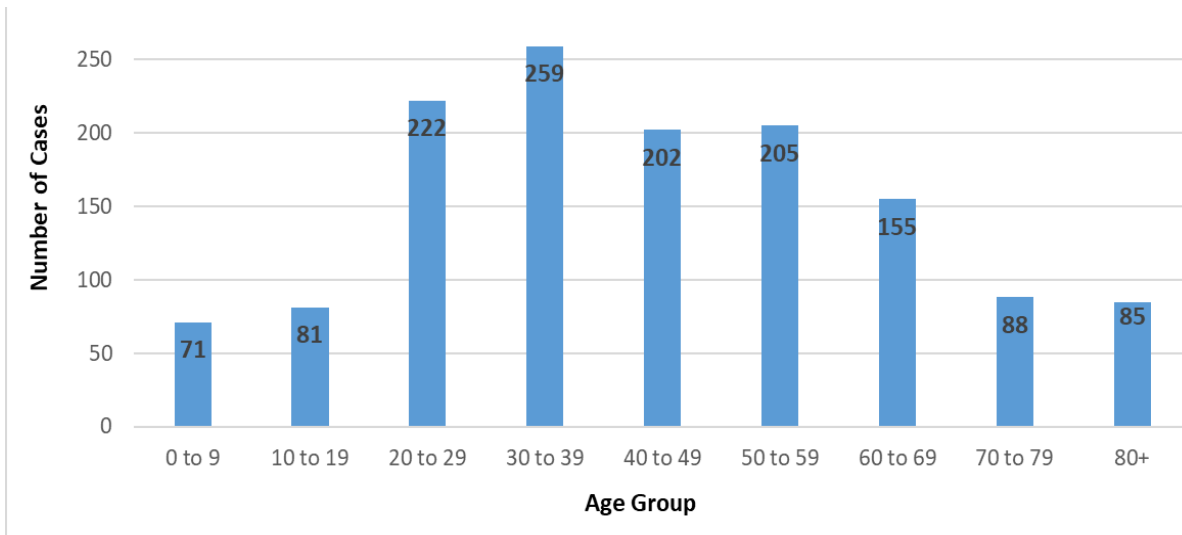


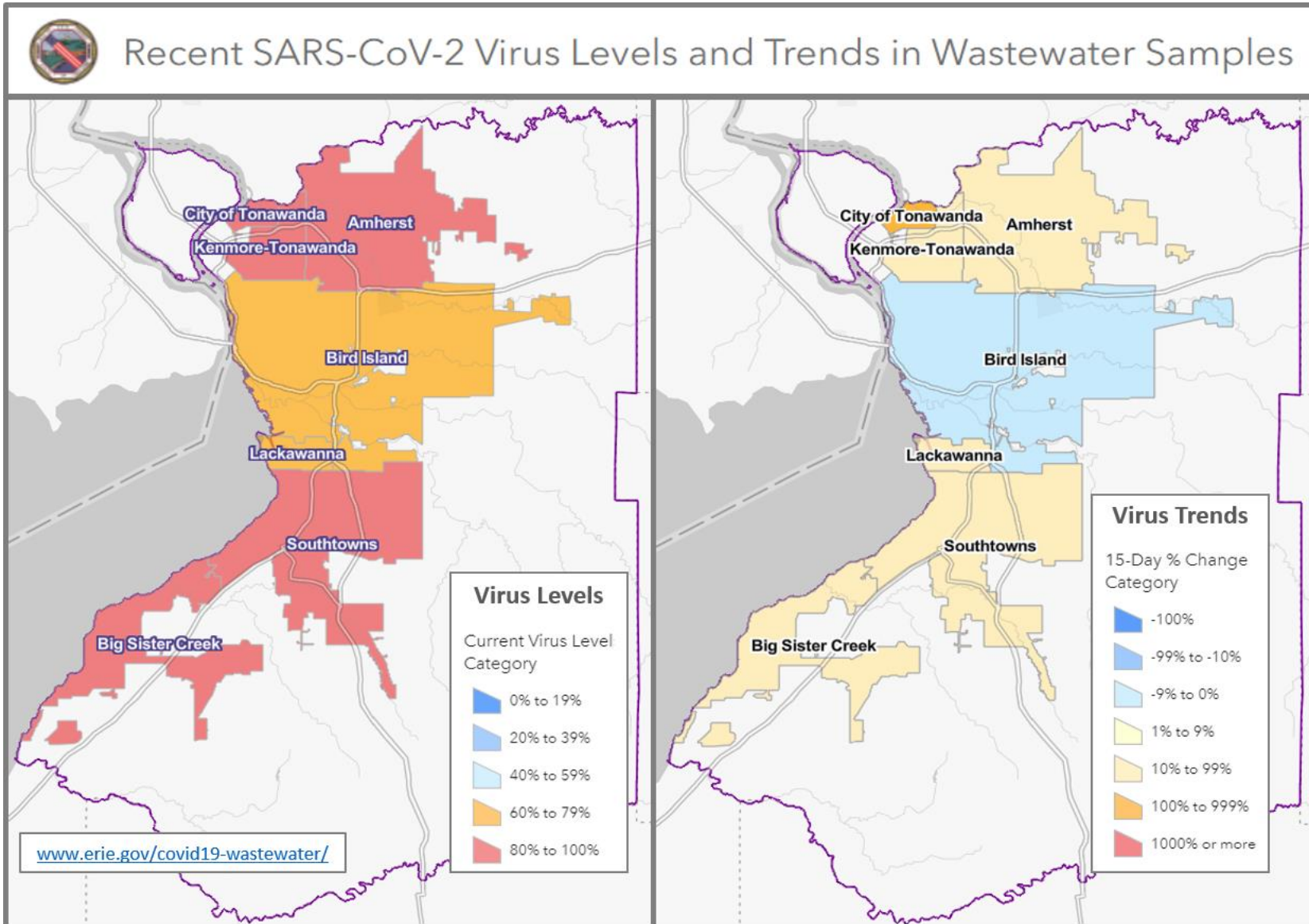
Table 1

New Cases in Past Seven Days, Past Six Weeks

Week Ending	New Cases in Past 7 Days	Total New Cases in the Past Seven Days per 100,000 Persons*
11/12/2022	907	95.0
11/19/2022	637	66.8
11/26/2022	524	54.9
12/3/2022	889	93.2
12/10/2022	975	102.2
12/17/2022	1,368	143.4

This metric shows trends over time.
*Population Source: 2020 U.S. Census Bureau

Figure 3: Erie County COVID-19 Wastewater Surveillance
Data through 12/15/2022



All data are provisional and represent data available at the time of the report.

Table 2

Confirmed COVID-19 Cases by ZIP Code

ZIP Code	City	Cases	Zip Code Population**	New Daily Cases per 100,000 Persons on 7-Day Rolling Average ¹	Total New Cases per 100,000 Persons in the Past 7 Days ²
14075	Hamburg	77	41,937	26.2	183.6
14150	Tonawanda	63	41,676	21.6	151.2
14224	West Seneca	62	39,889	22.2	155.4
14221	Amherst/Williamsville/Clarence	59	53,555	15.7	110.2
14086	Lancaster	58	31,847	26.0	182.1
14225	Cheektowaga	55	33,385	23.5	164.7
14215	Buffalo (East)	51	39,999	18.2	127.5
14043	Depew	48	24,742	27.7	194.0
14226	Amherst (Snyder/Eggertsville)	47	29,267	22.9	160.6
14127	Orchard Park	45	29,961	21.5	150.2
14220	Buffalo (South)	42	24,227	24.8	173.4
14214	Buffalo (University)	41	19,775	29.6	207.3
14216	Buffalo (North)	38	22,431	24.2	169.4
14213	Buffalo (West Side)	36	24,465	21.0	147.1
14228	Amherst (Getzville)	36	20,857	24.7	172.6
14072	Grand Island	33	20,374	23.1	162.0
14217	Kenmore	33	23,480	20.1	140.5
14227	Cheektowaga	33	23,426	20.1	140.9
14211	Buffalo/Cheektowaga	32	22,611	20.2	141.5
14218	Lackawanna	32	19,039	24.0	168.1
14223	Tonawanda	32	22,665	20.2	141.2
14207	Buffalo (Black Rock/Riverside)	30	23,552	18.2	127.4
14206	Buffalo (Kaisertown)	27	20,751	18.6	130.1
14201	Buffalo (Downtown)	25	11,549	30.9	216.5
14006	Angola	20	9,858	29.0	202.9
14204	Buffalo (East)	20	8,691	32.9	230.1
14219	Blasdell	19	11,536	23.5	164.7
14141	Springville	18	7,728	33.3	232.9
14051	Amherst (East)	17	19,533	12.4	87.0
14208	Buffalo (east)	17	11,125	21.8	152.8
14222	Buffalo (Elmwood Village)	16	14,046	16.3	113.9
14210	Buffalo (South)	15	14,694	14.6	102.1
14209	Buffalo (Delaware)	14	7,926	x	x
14052	Aurora	13	17,329	x	x
14085	Hamburg (Lake View)	13	7,353	x	x
14057	Eden	11	8,116	x	x
14212	Buffalo (Broadway)/Sloan	10	10,641	x	x
14001	Akron	9	9,464	x	x
14004	Alden	9	12,704	x	x
14032	Clarence (North)	9	7,989	x	x

All data are provisional and represent data available at the time of the report.

14047	Derby	9	6,440	x	x
14068	Amherst (Getzville)	9	7,150	x	x
14081	Irving	9	3,095	x	x
14059	Elma	8	8,933	x	x
14111	North Collins	8	3,352	x	x
14034	Collins	7	2,742	x	x
14202	Buffalo (Downtown)	7	3,911	x	x
14031	Clarence	5	9,392	x	x
14203	Buffalo	5	1,618	x	x
14025	Boston	*	3,039	x	x
14026	Bowmansville	*	674	x	x
14030	Chaffee	*	1,807	x	x
14033	Colden	*	2,219	x	x
14055	East Concord	*	1,405	x	x
14069	Glenwood	*	844	x	x
14070	Gowanda	*	6,732	x	x
14080	Holland	*	4,330	x	x
14091	Lawtons	*	1,079	x	x
14102	Marilla	*	1,281	x	x
14139	Wales	*	2,125	x	x
14170	West Falls	*	2,286	x	x
14231	Buffalo	*	n/a	x	x
14260-1426	Amherst (UB)	*	10,300	x	x
	All Erie County[†]	1,368	954,236	20.5	143.4

**Population Source: ZIP code data from U.S. Census Bureau, DP-1, General Population & Housing Characteristics

ZCTAs are an approximation of mailing ZIP codes

Buffalo and Erie County from 2010 (U.S. Census Redistricting Data, PL 94-171) Summary File

¹ Calculated by dividing total cases in past 7 days by 7, then dividing by ZIP code pop. & multiplying by 100,000

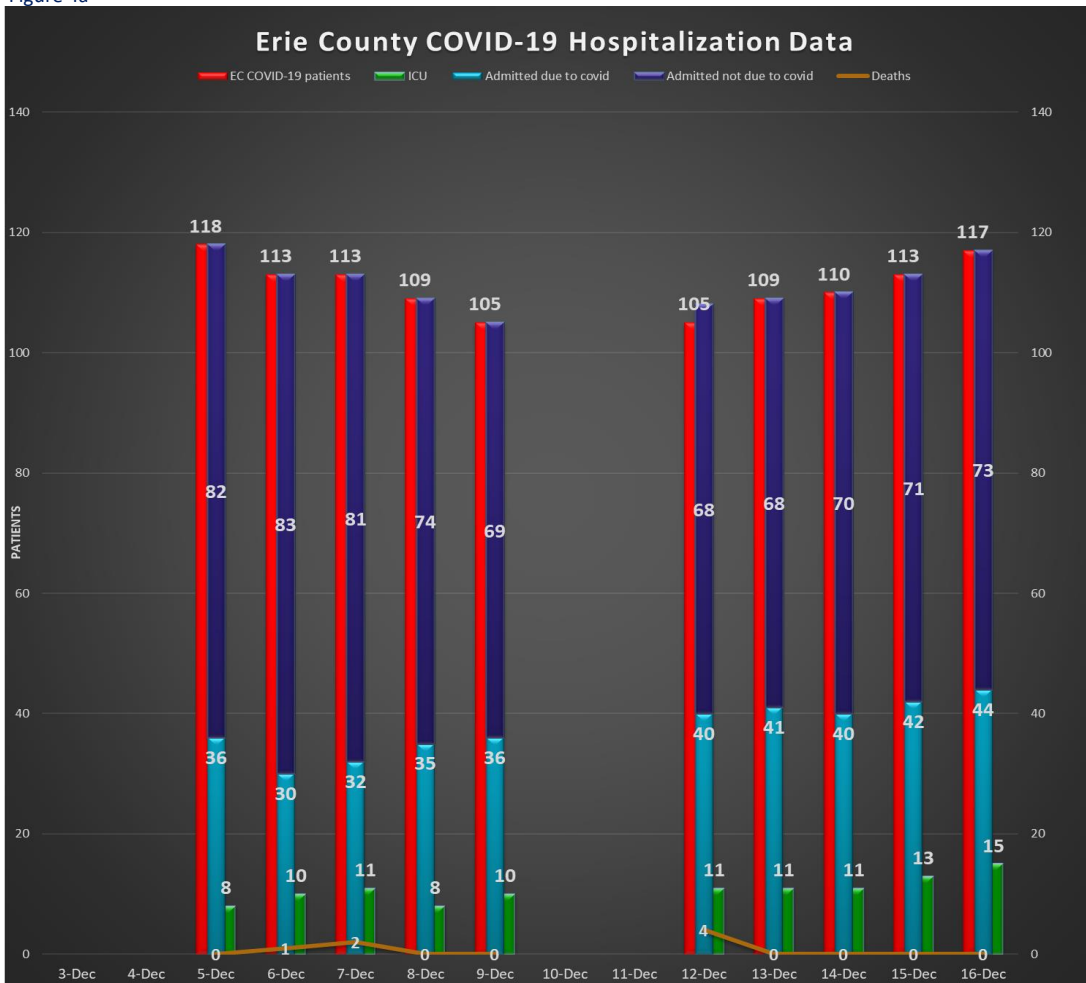
² Calculated by dividing total cases in the past 7 days by the zip code population, and multiplying by 100,000

† Total Population Value for Erie County (954,236) from 2020 U.S. Census Bureau used to calculate 'All Erie County' daily and 7-day case rates

The New York State Department of Health maintains a COVID-19 data dashboard with county-level reporting.

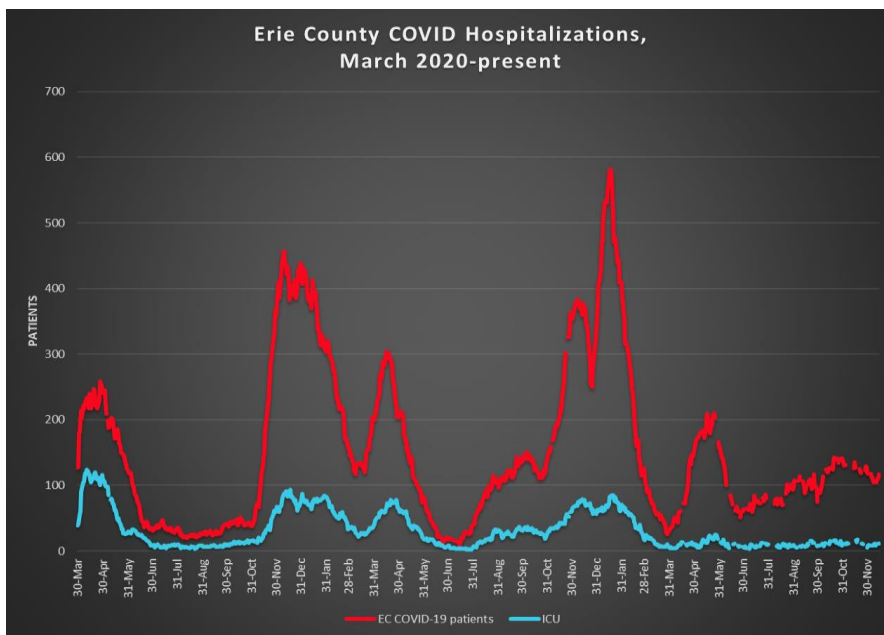
<https://coronavirus.health.ny.gov/covid-19-data-new-york>

Figure 4a



Most recent available data from NYSDOH included.

Figure 4b



Data provided by Erie County hospitals and NYSDOH. Patients may include residents from outside Erie County. See <https://coronavirus.health.ny.gov/daily-hospitalization-summary>

Section 2: COVID-19 Vaccine Information

Table 3

Erie County COVID-19 Vaccination Rates, Age & ZIP Code through December 19, 2022

ZIP Code	City	% of 0-19 population vaccinated (with at least 1 dose)	% of 20-34 population vaccinated (with at least 1 dose)	% of 35-64 population vaccinated (with at least 1 dose)	% of 65+ population vaccinated (with at least 1 dose)	% of 20+ Population Vaccinated (with at least 1 dose)
14112	North Evans	n/a	28.9%	n/a	48.3%	40.0%
14034	Collins	43.7%	29.6%	36.2%	90.8%	42.4%
14061	Farnham	9.8%	20.0%	47.7%	100.0%	43.5%
14070	Gowanda	31.8%	31.5%	46.2%	74.5%	47.9%
14035	Collins Center	11.8%	100.0%	44.2%	100.0%	55.6%
14030	Chaffee	20.7%	55.2%	53.9%	78.4%	59.7%
14170	West Falls	31.8%	73.7%	48.9%	100.0%	60.7%
14111	North Collins	32.6%	56.7%	60.5%	100.0%	65.7%
14004	Alden	30.2%	54.1%	63.7%	85.1%	66.8%
14025	Boston	38.5%	87.9%	62.9%	68.9%	68.5%
14080	Holland	31.6%	60.1%	61.8%	95.0%	69.0%
14055	East Concord	35.0%	67.4%	60.3%	100.0%	69.3%
14210	Buffalo	39.3%	58.5%	75.4%	83.7%	70.9%
14206	Buffalo	43.9%	65.0%	75.2%	78.4%	73.0%
14001	Akron	39.9%	61.8%	67.9%	100.0%	74.3%
14208	Buffalo	37.9%	62.6%	86.8%	70.9%	74.3%
14219	Blasdell	39.9%	60.8%	74.0%	97.0%	75.2%
14222	Buffalo (Elmwood Village)	42.1%	61.9%	92.0%	80.9%	75.6%
14047	Derby	39.1%	68.0%	69.9%	100.0%	76.5%
14091	Lawtons	46.8%	46.6%	86.5%	92.1%	77.3%
14006	Angola	35.9%	67.9%	75.7%	86.4%	77.3%
14102	Marilla	35.9%	55.4%	81.4%	94.2%	77.5%
14059	Elma	39.4%	70.1%	74.9%	88.5%	78.1%
14141	Springville	33.5%	73.1%	70.8%	97.7%	78.2%
14215	Buffalo	39.5%	67.4%	79.5%	100.0%	78.4%
14069	Glenwood	37.2%	89.8%	70.5%	90.9%	79.0%
14204	Buffalo	40.8%	76.6%	77.0%	89.8%	79.4%
14218	Lackawanna	32.3%	63.0%	80.8%	98.1%	79.4%
14139	South Wales	37.0%	94.9%	67.9%	100.0%	79.8%
14211	Buffalo	48.2%	77.1%	80.6%	87.3%	80.7%
14057	Eden	46.6%	88.1%	71.0%	100.0%	80.7%
14207	Buffalo	45.2%	63.4%	94.6%	90.1%	81.4%
14216	Buffalo	52.4%	70.6%	84.5%	100.0%	81.9%
14043	Depew	45.3%	70.8%	81.9%	93.6%	81.9%
14220	Buffalo	45.2%	74.5%	83.8%	97.8%	83.6%
14225	Cheektowaga	48.8%	67.1%	91.7%	92.4%	83.9%
14209	Buffalo	38.4%	75.7%	85.8%	100.0%	84.4%
14052	East Aurora	66.2%	84.6%	77.3%	100.0%	84.5%

All data are provisional and represent data available at the time of the report.

<https://covid19vaccine.health.ny.gov/vaccine-demographic-data>

14169	Wales Center	58.6%		77.2%	100.0%	84.9%
14214	Buffalo	48.3%	79.6%	87.0%	94.1%	85.0%
14150	Tonawanda	49.1%	78.1%	83.5%	94.6%	85.1%
14031	Clarence	55.1%	76.6%	80.3%	100.0%	85.4%
14224	West Seneca	51.8%	79.8%	80.5%	100.0%	85.6%
14212	Buffalo	48.7%	83.9%	87.4%	84.5%	85.9%
14217	Kenmore	58.5%	89.1%	80.8%	93.9%	86.0%
14227	Cheektowaga	58.7%	74.8%	83.1%	100.0%	86.2%
14032	Clarence Center	56.0%	100.0%	79.8%	100.0%	86.7%
14213	Buffalo	38.8%	81.8%	89.9%	92.7%	86.8%
14201	Buffalo	37.3%	86.3%	83.8%	98.8%	86.9%
14075	Hamburg	55.8%	89.8%	81.4%	100.0%	88.0%
14228	Amherst (Getzville)	59.6%	81.1%	92.3%	96.0%	88.7%
14202	Buffalo	46.2%	73.7%	100.0%	100.0%	89.1%
14072	Grand Island	55.4%	92.8%	83.3%	100.0%	89.1%
14051	East Amherst	68.5%	100.0%	82.9%	100.0%	89.4%
14226	Amherst (Snyder/Eggertsville)	58.3%	88.1%	88.1%	100.0%	90.6%
14223	Tonawanda	51.1%	87.0%	88.6%	100.0%	90.9%
14127	Orchard Park	61.9%	100.0%	84.6%	100.0%	91.5%
14086	Lancaster	57.8%	94.3%	88.1%	100.0%	92.0%
14026	Bowmansville	100.0%	100.0%	89.9%	100.0%	93.8%
14221	Amherst/Williamsville/Clare	67.8%	100.0%	89.5%	98.5%	94.3%
14033	Colden	59.3%	100.0%	94.2%	98.3%	96.1%
14085	Lake View	61.2%	91.5%	99.7%	95.3%	96.9%
14068	Getzville	77.8%	100.0%	100.0%	93.9%	97.5%
14134	Sardinia	48.6%	100.0%	100.0%	100.0%	100.0%
Total		49.0%	76.3%	82.3%	95.7%	83.7%

All data are provisional and represent data available at the time of the report.

<https://covid19vaccine.health.ny.gov/vaccine-demographic-data>

Section 3: COVID-19 Mortality Data

Table 4

Erie County COVID-19 Deaths by Age Group (January - December 2021)

Age Group	Jan	Feb	Mar	Apr	May	Jun	Jul	Aug	Sep	Oct	Nov	Dec	Total
<40	3	4	0	4	2	0	1	1	0	3	4	3	25
40 to 49	4	3	1	8	2	0	1	1	1	0	3	7	31
50 to 59	8	11	5	7	5	4	1	6	4	11	12	17	91
60 to 69	31	22	6	24	11	5	1	6	11	15	14	50	196
70 to 79	60	34	16	30	21	4	7	10	15	14	24	46	281
80+	163	62	29	27	24	5	1	17	24	38	40	66	496
Total # of Deaths	269	136	57	100	65	18	12	41	55	81	97	189	1,120
Ave. Death Age	81	76	77	71	74	70	70	74	77	76	73	73	76

Table 5

Erie County COVID-19 Deaths by Age Group (January 1-December 1, 2022)

Age Group	Jan	Feb	Mar	Apr	May	Jun	Jul	Aug	Sept	Oct	Nov	Dec	Total
<40	7	2	0	0	1	1	0	2	0	0	0	0	13
40 to 49	9	1	1	1	1	0	1	0	0	0	0	0	14
50 to 59	19	9	2	0	1	1	0	1	5	1	1	0	40
60 to 69	49	20	3	4	7	7	2	2	4	3	3	0	104
70 to 79	57	25	3	7	17	5	7	8	3	9	10	0	151
80+	90	40	10	17	37	12	10	11	13	30	19	1	290
Total # of Deaths	231	97	19	29	64	26	20	24	25	43	33	1	612
Ave. Death Age	74	76	78	80	81	77	79	76	77	84	81	-	77

2020 total deaths	1,276
2021 total deaths	1,120
2022 deaths to date	612
Total:	3,008

Table 6

Erie County COVID-19 Deaths by Residence

Residence	Fatalities	% of Fatalities	% of Population*
Buffalo	783	26.1%	29.2%
Erie County Excl. Buffalo	2,225	74.0%	70.8%
All of Erie County	3,008	100.0%	100.0%

*Population Source: Prepared from 2020 Census Bureau

Most recent data provided.