



**Erie County
Department of
Health**



Public Health
Prevent. Promote. Protect.

COVID-19 Data Update

Week ending December 3, 2022

All data are provisional.

889 new COVID-19 cases were recorded for the week ending December 3, 2022. This is a 70% increase from the previous week's total of 524 cases and reverses a five-week trend of declining reported cases. These data do not include at-home tests. The weekly COVID-19 positivity rate increased from 8.0% to 10.2%. 8,756 overall reported COVID-19 diagnostic tests showed an increase from the previous week's total of 6,544 tests.

7-day case rate per 100,000 persons was 93, a decrease from the previous week's rate of 55. Erie County remains in a "medium" COVID-19 Community Level per CDC indicators. CDC community transmission metrics increased to "high" due to the PCR test positivity rate exceeding 10%.

Buffalo city COVID-19 cases comprised 28.6% of new COVID-19 cases this past week. (Buffalo city population is 29.2% of all Erie County residents).

Erie County COVID-19 Wastewater Surveillance Data: See <https://www.erie.gov/covid19-wastewater>
The most recent COVID-19 wastewater surveillance data through showed SARS-CoV-2 viral particles in the top 40-59% of samples collected since 12/1/21 within Big Sister Creek sewershed (through 11/28). Bird Island and Lackawanna (through 11/24) and Bird Island (through 12/4) were in the 60-79% category. Amherst, City of Tonawanda, Kenmore-Tonawanda (all through 12/4) and Southtowns (through 12/1) were in the 80-100% category.

Over the past two weeks sewersheds for the Southtowns showed a 9-0% decrease; Amherst, Bird Island, City of Tonawanda and Kenmore-Tonawanda showed a 10-99% increase through 12/4, as did Lackawanna through 11/24 and Big Sister Creek through 11/28.

Erie County COVID-19 Hospitalization Data: See Figures 4a and 4b. NYSDOH publishes updated hospitalization data by region at <https://coronavirus.health.ny.gov/daily-hospitalization-summary>.

Erie County COVID-19 Vaccination Data: See Section 2. NYSDOH updates vaccine data daily. Demographic data: <https://coronavirus.health.ny.gov/demographic-vaccination-data>.

Erie County COVID-19 Mortality Data: Mortality data are updated through November 17, 2022 based on data available to ECDOH. NYSDOH reports COVID-19 mortality data at <https://coronavirus.health.ny.gov/fatalities-0>.

CONTENTS

Section 1: COVID-19 Case Data

Figure 1: Confirmed COVID-19 Cases by Age Group & Gender (to date)	Page 1
Figure 2: Confirmed COVID-19 Cases by Age Group and Gender (latest week)	Page 1
Table 1: New COVID-19 Cases in the Past Seven Days	Page 1
Figure 3: Erie County COVID-19 Wastewater Surveillance	Page 2
Table 2: Confirmed COVID-19 Cases by ZIP Code	Page 3
Figures 4a and 4b: Erie County COVID-19 Hospitalizations	Page 5

Section 2: COVID-19 Vaccination Data

Table 3: Erie County COVID-19 Vaccination Rates by Age and ZIP Code	Page 6
---	--------

Section 3: COVID-19 Mortality Data

Tables 4 & 5: Erie County COVID-19 Deaths By Age Group	Page 8
Table 6: Erie County COVID-19 Deaths by Residence	Page 8

Section 1: Confirmed COVID-19 Cases

Figure 1

Confirmed COVID-19 Cases by Age Group and Gender (March 2020-present)

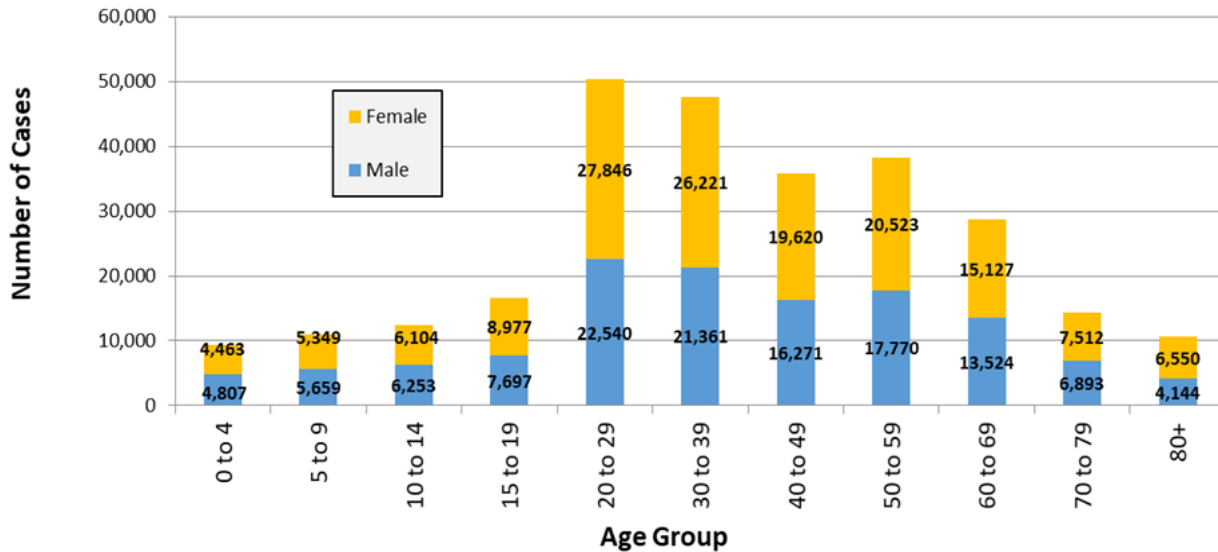


Figure 2

Confirmed COVID-19 Cases by Age Group (November 27-December 3, 2022)

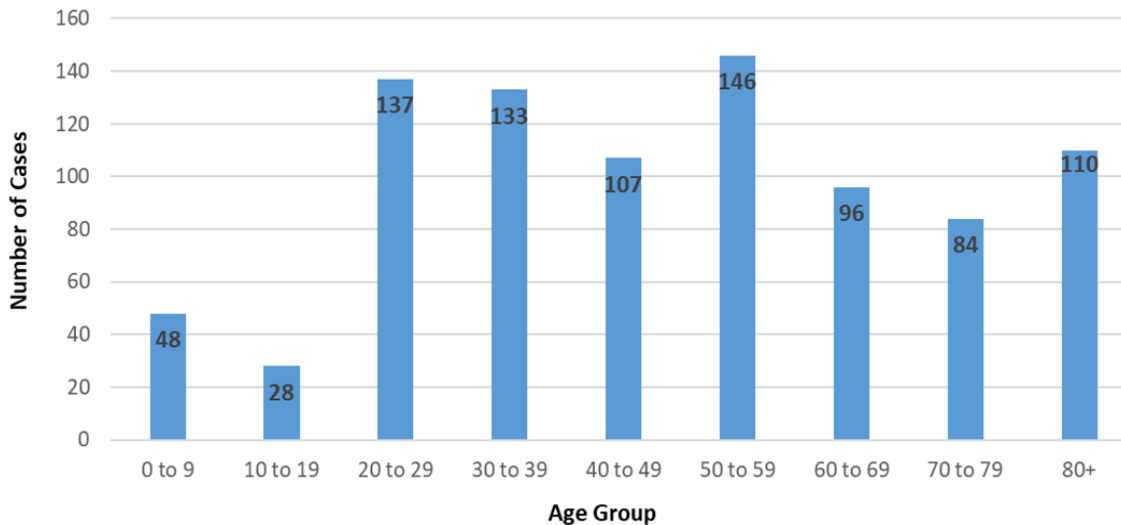


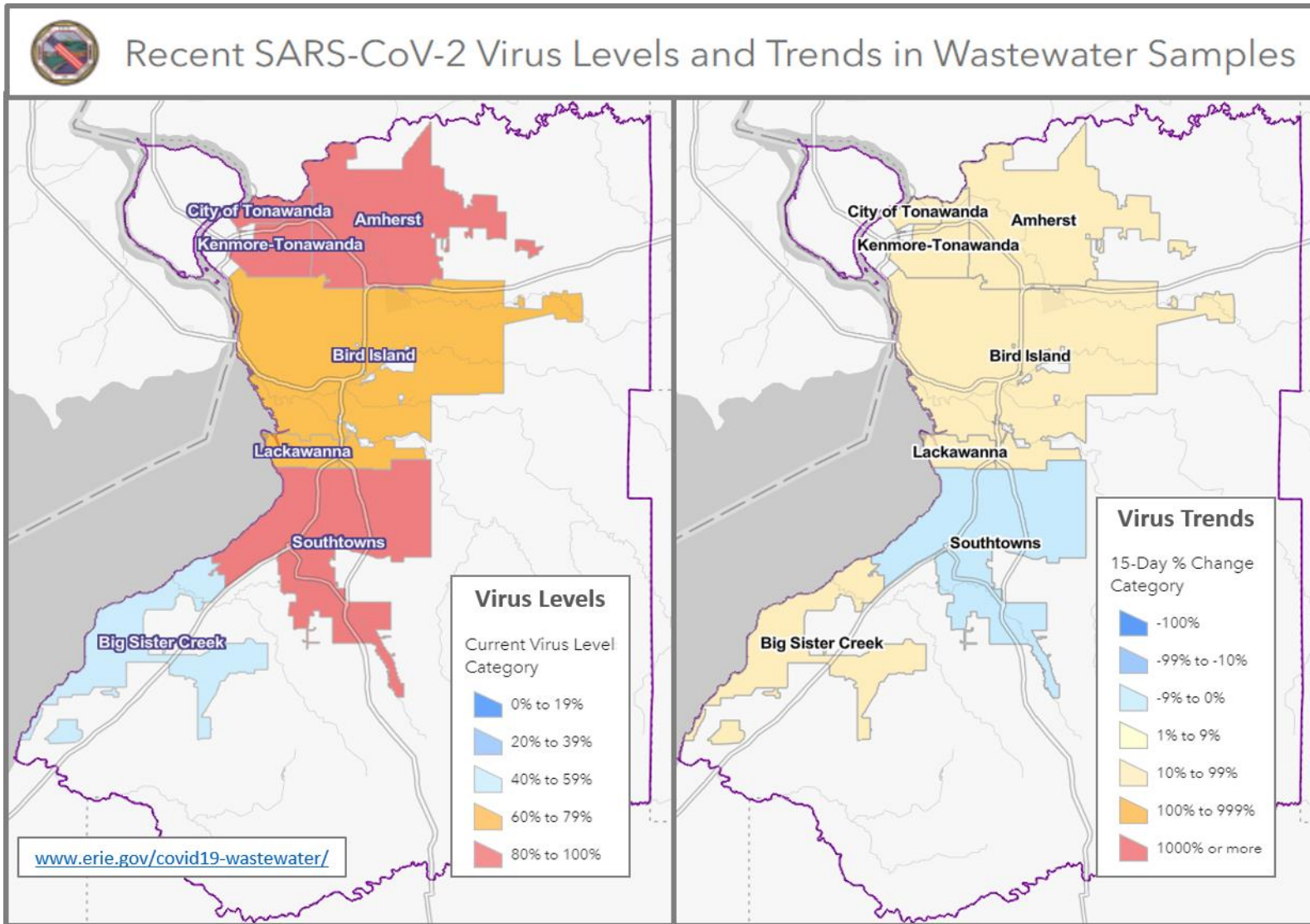
Table 1

New Cases in Past Seven Days, Past Six Weeks

Week Ending	New Cases in Past 7 Days	Total New Cases in the Past Seven Days per 100,000 Persons*
10/29/2022	1,304	136.7
11/5/2022	1,206	126.4
11/12/2022	907	95.0
11/19/2022	637	66.8
11/26/2022	524	54.9
12/3/2022	889	93.2

This metric shows trends over time.
*Population Source: 2020 U.S. Census Bureau

Figure 3: Erie County COVID-19 Wastewater Surveillance



All data are provisional and represent data available at the time of the report.

Table 2

Confirmed COVID-19 Cases by ZIP Code

ZIP Code	City	Cases	Zip Code Population**	New Daily Cases per 100,000 Persons on 7-Day Rolling Average ¹	Total New Cases per 100,000 Persons in the Past 7 Days ²
14221	Amherst/Williamsville/Clarenc	67	53,555	17.9	125.1
14086	Lancaster	48	31,847	21.5	150.7
14150	Tonawanda	47	41,676	16.1	112.8
14075	Hamburg	46	41,937	15.7	109.7
14224	West Seneca	45	39,889	16.1	112.8
14127	Orchard Park	43	29,961	20.5	143.5
14215	Buffalo (East)	42	39,999	15.0	105.0
14225	Cheektowaga	38	33,385	16.3	113.8
14043	Depew	28	24,742	16.2	113.2
14223	Tonawanda	27	22,665	17.0	119.1
14216	Buffalo (North)	24	22,431	15.3	107.0
14217	Kenmore	24	23,480	14.6	102.2
14227	Cheektowaga	24	23,426	14.6	102.5
14207	Buffalo (Black Rock/Riverside)	23	23,552	14.0	97.7
14213	Buffalo (West Side)	23	24,465	13.4	94.0
14220	Buffalo (South)	23	24,227	13.6	94.9
14226	Amherst (Snyder/Eggertsville)	23	29,267	11.2	78.6
14228	Amherst (Getzville)	21	20,857	14.4	100.7
14072	Grand Island	19	20,374	13.3	93.3
14206	Buffalo (Kaisertown)	18	20,751	12.4	86.7
14214	Buffalo (University)	17	19,775	12.3	86.0
14218	Lackawanna	16	19,039	12.0	84.0
14052	Aurora	15	17,329	12.4	86.6
14222	Buffalo (Elmwood Village)	14	14,046	x	x
14210	Buffalo (South)	13	14,694	x	x
14211	Buffalo/Cheektowaga	13	22,611	x	x
14051	Amherst (East)	11	19,533	x	x
14212	Buffalo (Broadway)/Sloan	11	10,641	x	x
14219	Blasdell	11	11,536	x	x
14201	Buffalo (Downtown)	9	11,549	x	x
14208	Buffalo (east)	9	11,125	x	x
14081	Irving	8	3,095	x	x
14085	Hamburg (Lake View)	8	7,353	x	x
14202	Buffalo (Downtown)	8	3,911	x	x
14204	Buffalo (East)	7	8,691	x	x
14032	Clarence (North)	6	7,989	x	x
14068	Amherst (Getzville)	6	7,150	x	x
14070	Gowanda	6	6,732	x	x
14006	Angola	5	9,858	x	x
14047	Derby	5	6,440	x	x

All data are provisional and represent data available at the time of the report.

14001	Akron	*	9,464	x	x
14004	Alden	*	12,704	x	x
14025	Boston	*	3,039	x	x
14026	Bowmansville	*	674	x	x
14030	Chaffee	*	1,807	x	x
14031	Clarence	*	9,392	x	x
14033	Colden	*	2,219	x	x
14034	Collins	*	2,742	x	x
14055	East Concord	*	1,405	x	x
14057	Eden	*	8,116	x	x
14059	Elma	*	8,933	x	x
14069	Glenwood	*	844	x	x
14080	Holland	*	4,330	x	x
14091	Lawtons	*	1,079	x	x
14102	Marilla	*	1,281	x	x
14111	North Collins	*	3,352	x	x
14139	Wales	*	2,125	x	x
14141	Springville	*	7,728	x	x
14170	West Falls	*	2,286	x	x
14203	Buffalo	*	1,618	x	x
14209	Buffalo (Delaware)	*	7,926	x	x
14231	Buffalo	*	n/a	x	x
14260-1426	Amherst (UB)	*	10,300	x	x
	All Erie County[†]	889	954,236	13.3	93.2

***Population Source: ZIP code data from U.S. Census Bureau, DP-1, General Population & Housing Characteristics*

ZCTAs are an approximation of mailing ZIP codes

Buffalo and Erie County from 2010 (U.S. Census Redistricting Data, PL 94-171) Summary File

¹ *Calculated by dividing total cases in past 7 days by 7, then dividing by ZIP code pop. & multiplying by 100,000*

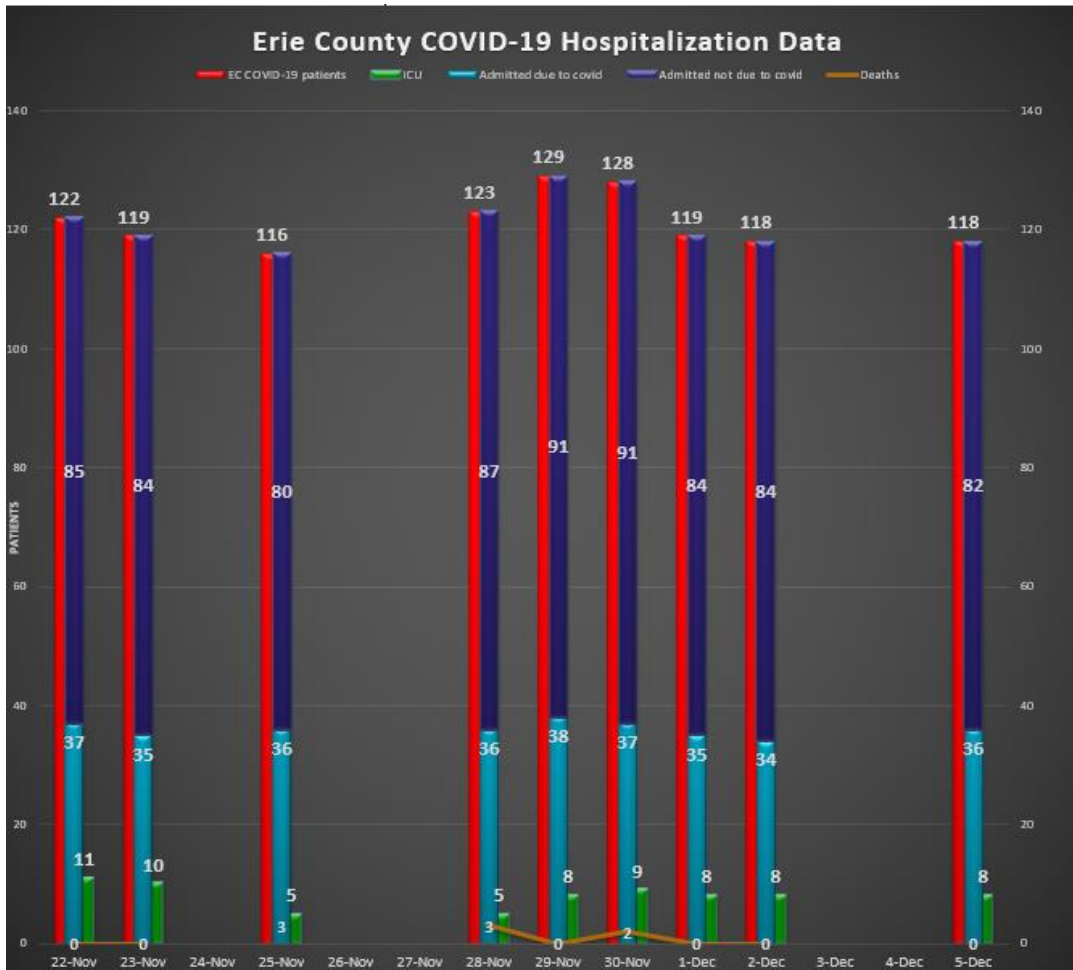
² *Calculated by dividing total cases in the past 7 days by the zip code population, and multiplying by 100,000*

[†] *Total Population Value for Erie County (954,236) from 2020 U.S. Census Bureau used to calculate 'All Erie County' daily and 7-day case rates*

The New York State Department of Health maintains a COVID-19 data dashboard with county-level reporting.

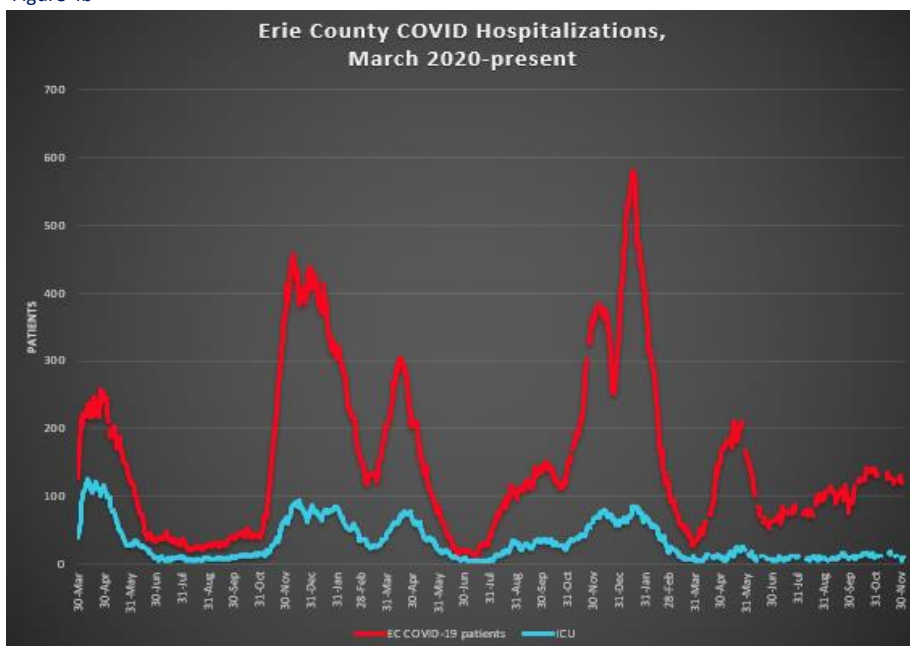
<https://coronavirus.health.ny.gov/covid-19-data-new-york>

Figure 4a



Most recent available data from NYSDOH included.

Figure 4b



Data provided by Erie County hospitals and NYSDOH. Patients may include residents from outside Erie County. See <https://coronavirus.health.ny.gov/daily-hospitalization-summary>

Section 2: COVID-19 Vaccine Information

Table 3

Erie County COVID-19 Vaccination Rates, Age & ZIP Code through December 5, 2022

ZIP Code	City	% of 0-19 population vaccinated (with at least 1 dose)	% of 20-34 population vaccinated (with at least 1 dose)	% of 35-64 population vaccinated (with at least 1 dose)	% of 65+ population vaccinated (with at least 1 dose)	% of 20+ Population Vaccinated (with at least 1 dose)
14112	North Evans	n/a	28.9%	n/a	48.3%	40.0%
14034	Collins	43.0%	29.8%	36.2%	91.1%	42.5%
14061	Farnham	9.8%	20.0%	47.7%	100.0%	43.5%
14070	Gowanda	31.8%	31.4%	46.3%	74.6%	47.9%
14035	Collins Center	11.8%	100.0%	44.2%	100.0%	55.6%
14030	Chaffee	20.7%	54.4%	53.9%	78.4%	59.6%
14170	West Falls	31.9%	73.1%	48.9%	100.0%	60.6%
14111	North Collins	32.6%	56.7%	60.6%	100.0%	65.7%
14004	Alden	30.0%	54.1%	63.6%	85.3%	66.8%
14025	Boston	38.5%	87.9%	63.1%	68.9%	68.6%
14080	Holland	31.6%	59.6%	61.9%	95.1%	69.0%
14055	East Concord	34.6%	67.4%	60.1%	100.0%	69.2%
14210	Buffalo	39.1%	58.2%	75.3%	83.8%	70.8%
14206	Buffalo	43.6%	64.9%	75.2%	78.5%	73.0%
14208	Buffalo	37.8%	62.4%	86.7%	70.9%	74.2%
14001	Akron	39.8%	61.8%	67.9%	100.0%	74.3%
14219	Blasdell	39.9%	61.1%	74.0%	96.9%	75.2%
14222	Buffalo (Elmwood Village)	41.9%	61.8%	91.7%	80.9%	75.4%
14047	Derby	39.1%	67.9%	70.0%	100.0%	76.5%
14091	Lawtons	46.5%	46.1%	86.5%	91.1%	76.9%
14102	Marilla	35.6%	55.0%	81.4%	93.7%	77.3%
14006	Angola	35.8%	67.9%	75.7%	86.5%	77.3%
14141	Springville	33.5%	72.7%	70.7%	97.9%	78.1%
14059	Elma	39.3%	70.0%	74.8%	88.5%	78.1%
14215	Buffalo	39.3%	67.3%	79.5%	100.0%	78.4%
14069	Glenwood	37.2%	88.8%	70.5%	90.9%	78.8%
14204	Buffalo	40.5%	76.3%	76.8%	89.7%	79.2%
14218	Lackawanna	32.3%	63.0%	80.8%	98.3%	79.5%
14139	South Wales	37.0%	94.9%	68.1%	100.0%	79.9%
14211	Buffalo	47.9%	77.0%	80.5%	87.3%	80.6%
14057	Eden	46.6%	87.8%	71.0%	100.0%	80.6%
14207	Buffalo	45.0%	63.3%	94.5%	90.0%	81.3%
14216	Buffalo	52.2%	70.3%	84.4%	100.0%	81.8%
14043	Depew	45.2%	70.7%	81.9%	93.5%	81.9%
14220	Buffalo	45.1%	74.3%	83.8%	97.6%	83.5%
14225	Cheektowaga	48.6%	67.1%	91.7%	92.3%	83.8%
14209	Buffalo	38.8%	75.5%	85.7%	100.0%	84.3%
14052	East Aurora	66.1%	84.4%	77.2%	100.0%	84.4%

All data are provisional and represent data available at the time of the report.

<https://covid19vaccine.health.ny.gov/vaccine-demographic-data>

14150	Tonawanda	48.8%	78.0%	83.4%	94.4%	85.0%
14214	Buffalo	48.2%	79.6%	86.9%	94.2%	85.0%
14031	Clarence	54.7%	76.4%	80.3%	100.0%	85.3%
14224	West Seneca	51.7%	79.7%	80.4%	100.0%	85.5%
14212	Buffalo	48.1%	83.8%	87.3%	84.7%	85.8%
14217	Kenmore	58.2%	88.9%	80.8%	93.9%	86.0%
14169	Wales Center	58.6%	n/a	78.9%	100.0%	86.0%
14227	Cheektowaga	58.5%	75.0%	83.1%	100.0%	86.2%
14032	Clarence Center	56.3%	100.0%	79.8%	100.0%	86.7%
14213	Buffalo	38.8%	81.7%	90.0%	92.8%	86.9%
14201	Buffalo	37.0%	86.3%	84.0%	98.8%	87.0%
14075	Hamburg	55.7%	89.6%	81.3%	100.0%	88.0%
14228	Amherst (Getzville)	59.5%	80.9%	92.3%	95.8%	88.5%
14202	Buffalo	45.5%	73.5%	100.0%	100.0%	89.0%
14072	Grand Island	55.2%	92.9%	83.3%	100.0%	89.1%
14051	East Amherst	68.2%	100.0%	82.8%	100.0%	89.3%
14226	Amherst (Snyder/Eggertsville)	58.2%	88.2%	88.2%	100.0%	90.7%
14223	Tonawanda	50.8%	87.1%	88.5%	100.0%	90.9%
14127	Orchard Park	61.8%	100.0%	84.6%	100.0%	91.5%
14086	Lancaster	57.7%	94.2%	88.1%	100.0%	92.0%
14026	Bowmansville	100.0%	100.0%	89.9%	100.0%	93.8%
14221	Amherst/Williamsville/Clare	67.8%	100.0%	89.4%	98.5%	94.3%
14033	Colden	59.3%	100.0%	94.2%	98.1%	96.0%
14085	Lake View	60.9%	91.5%	99.5%	95.4%	96.9%
14068	Getzville	77.6%	100.0%	100.0%	93.7%	97.5%
14134	Sardinia	48.6%	100.0%	100.0%	100.0%	100.0%
Total		48.9%	76.2%	82.2%	95.6%	83.7%

All data are provisional and represent data available at the time of the report.

<https://covid19vaccine.health.ny.gov/vaccine-demographic-data>

Section 3: COVID-19 Mortality Data

Table 4

Erie County COVID-19 Deaths by Age Group (January - December 2021)

Age Group	Jan	Feb	Mar	Apr	May	Jun	Jul	Aug	Sep	Oct	Nov	Dec	Total
<40	3	4	0	4	2	0	1	1	0	3	4	3	25
40 to 49	4	3	1	8	2	0	1	1	1	0	3	7	31
50 to 59	8	11	5	7	5	4	1	6	4	11	12	17	91
60 to 69	31	22	6	24	11	5	1	6	11	15	14	50	196
70 to 79	60	34	16	30	21	4	7	10	15	14	24	46	281
80+	163	62	29	27	24	5	1	17	24	38	40	66	496
Total # of Deaths	269	136	57	100	65	18	12	41	55	81	97	189	1,120
Ave. Death Age	81	76	77	71	74	70	70	74	77	76	73	73	76

Table 5

Erie County COVID-19 Deaths by Age Group (January 1-November 17, 2022)

Age Group	Jan	Feb	Mar	Apr	May	Jun	Jul	Aug	Sept	Oct	Nov	Total
<40	7	2	0	0	1	1	0	2	0	0	0	13
40 to 49	9	1	1	1	1	0	1	0	0	0	0	14
50 to 59	19	9	2	0	1	1	0	1	5	1	1	40
60 to 69	49	20	3	4	7	7	2	2	4	3	2	103
70 to 79	57	25	3	7	17	5	7	8	3	9	8	149
80+	90	40	10	17	37	12	10	11	13	28	11	279
Total # of Deaths	231	97	19	29	64	26	20	24	25	41	22	598
Ave. Death Age	74	76	78	80	81	77	79	76	77	83	80	77

2020 total deaths	1,276
2021 total deaths	1,120
2022 deaths to date	598
Total:	2,994

Table 6

Erie County COVID-19 Deaths by Residence

Residence	Fatalities	% of Fatalities	% of Population*
Buffalo	781	26.1%	29.2%
Erie County Excl. Buffalo	2,213	73.9%	70.8%
All of Erie County	2,994	100.0%	100.0%

*Population Source: Prepared from 2020 Census Bureau

Most recent data provided.