



County of Erie

GALE R. BURSTEIN, MD, MPH, FAAP
COMMISSIONER OF HEALTH

WEEKLY COVID-19 SURVEILLANCE REPORT FOR WEEK ENDING APRIL 20, 2024

Weekly COVID-19 Summary

Positive Tests*

- Erie County: 102 positive tests were reported. This is an 11% decrease from the previous week.
- NYS: 3,170 positive tests were reported. This is an 8% decrease from the previous week.

Hospitalizations

- Western New York: 37 patients were newly hospitalized with COVID-19. This is a 5% increase from the previous week.
- NYS: 454 patients were newly hospitalized with COVID-19. This is a 12% decrease from the previous week.

Wastewater

- Erie County: SARS-CoV-2 RNA levels have been decreasing over the past 12 weeks.
- NYS: Overall SARS-CoV-2 RNA levels have been decreasing over the past 14 weeks.

Variants

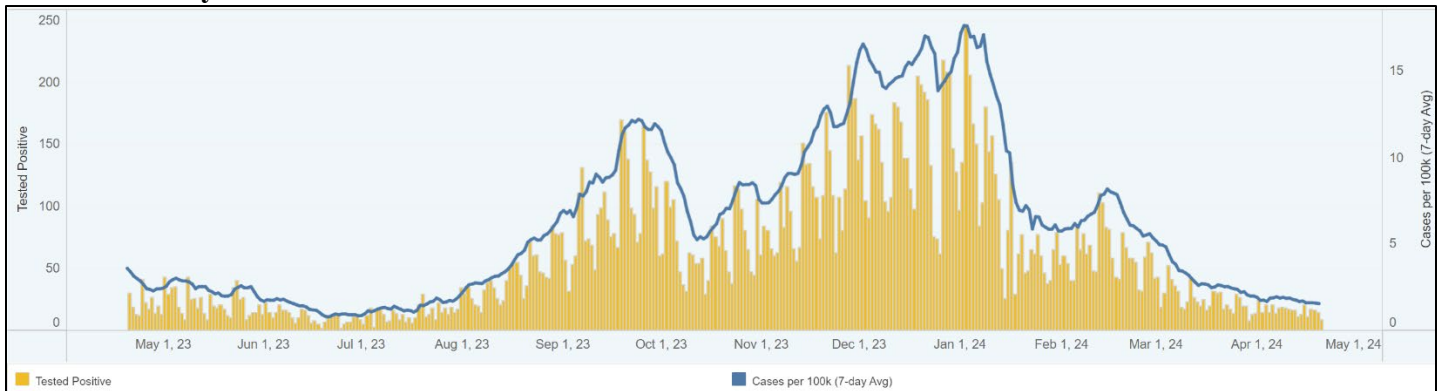
- JN.1 is the most prevalent variant in NYS over the past 18 weeks.

*Does not include positive self-administered home tests

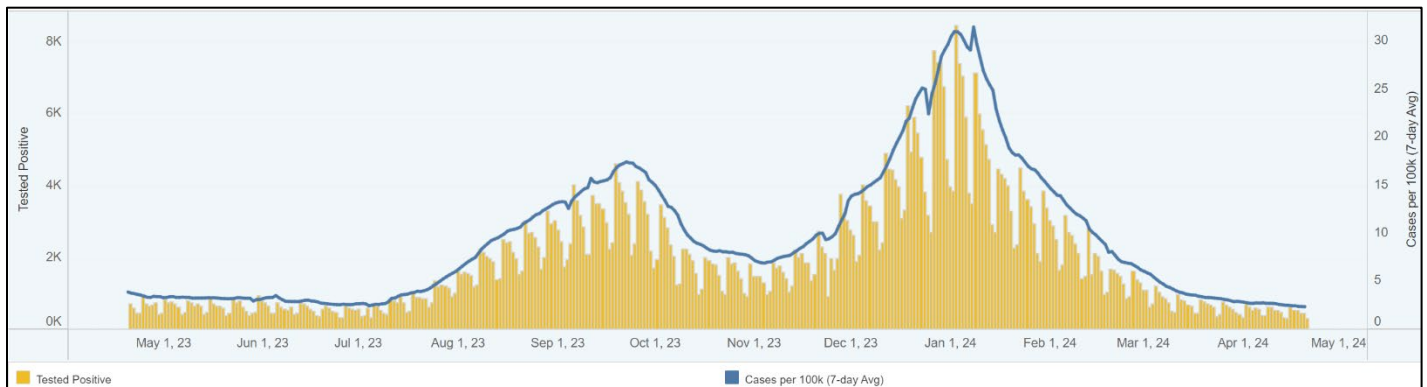
Source: <https://coronavirus.health.ny.gov/covid-19-data-new-york>

Daily Positive COVID-19 Tests Over the Past 12 Months

A. Erie County

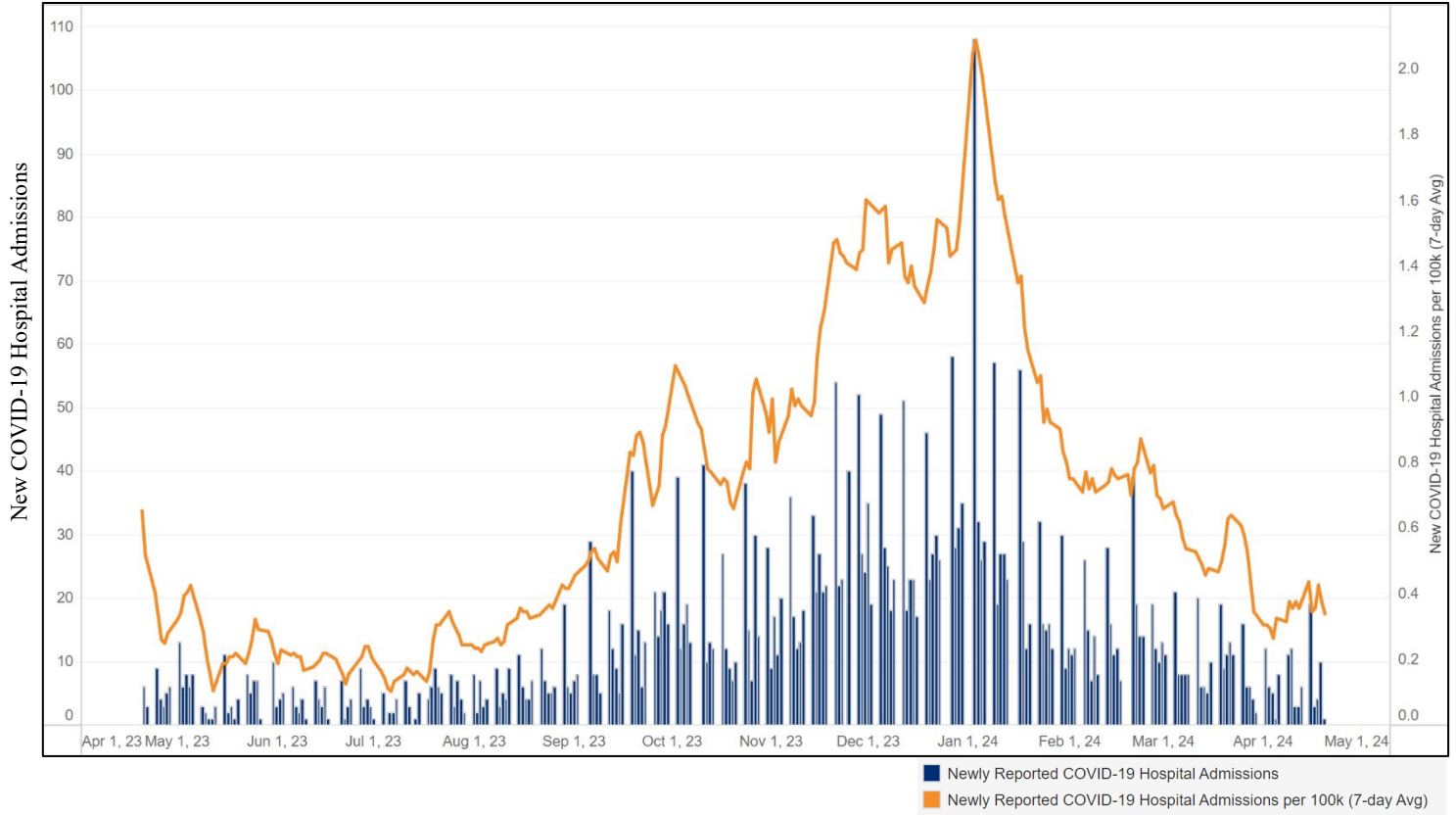


B. New York State

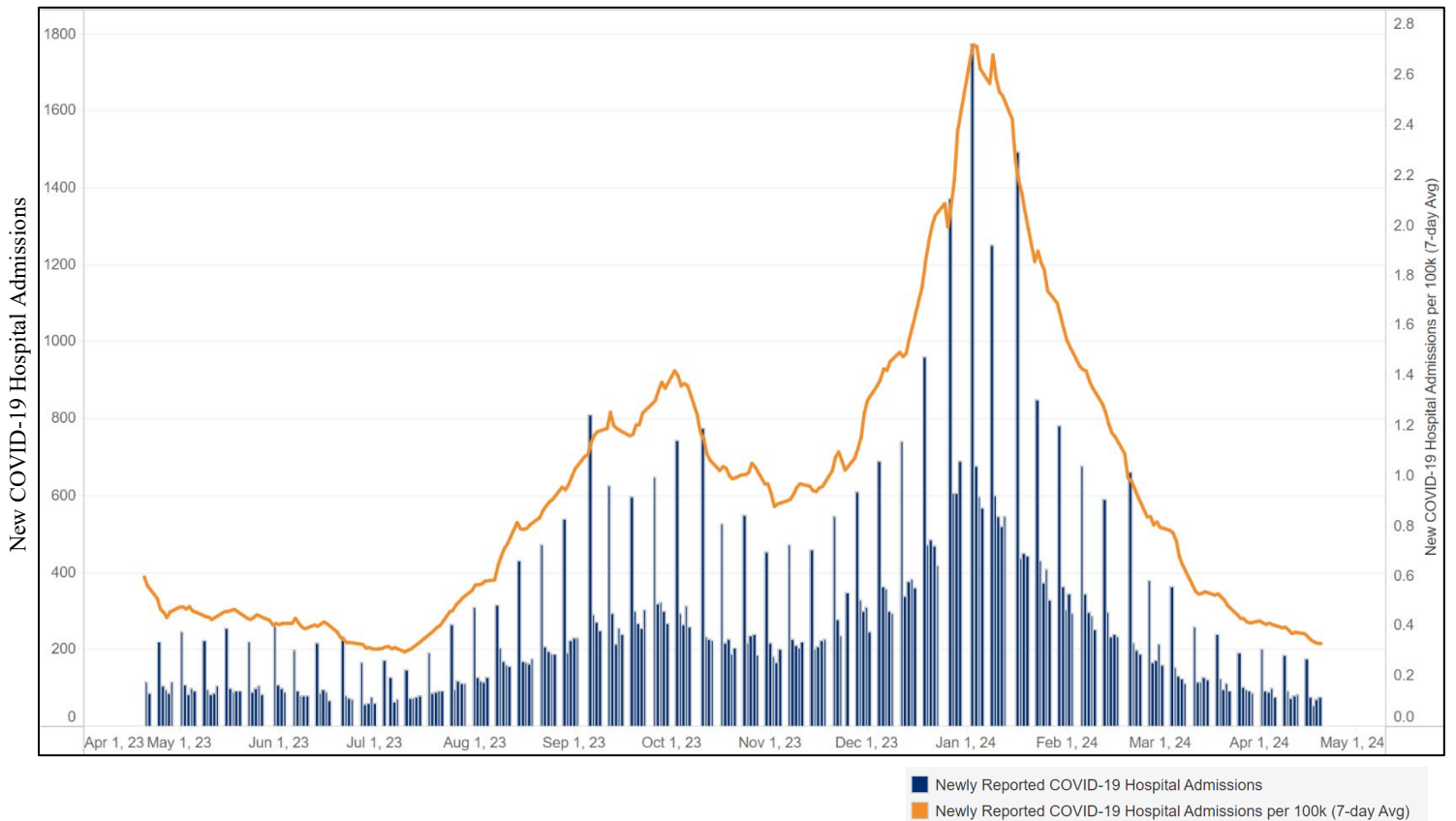


New Daily COVID-19 Hospitalizations Over the Past 12 Months

A. Western New York

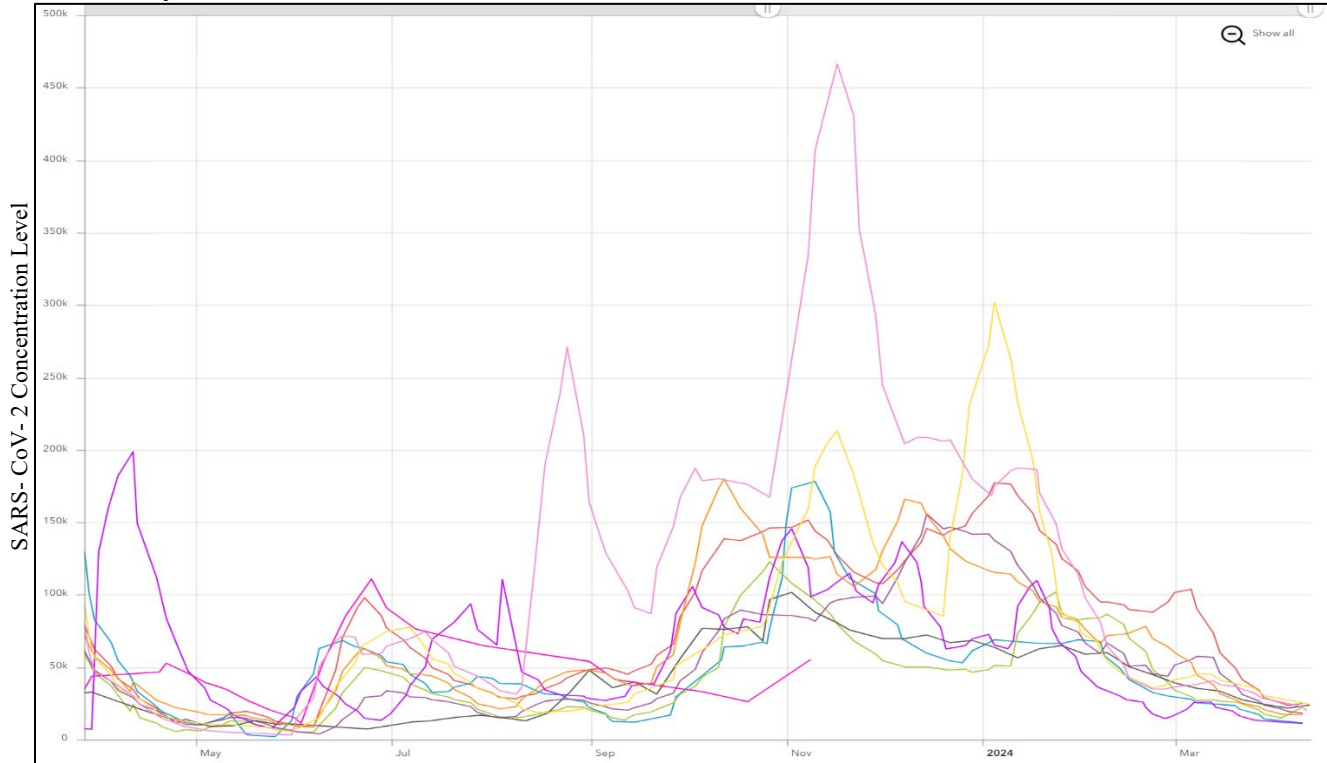


B. New York State



SARS- CoV-2 Wastewater Surveillance Trends

A. Erie County Over the Past 12 Months*

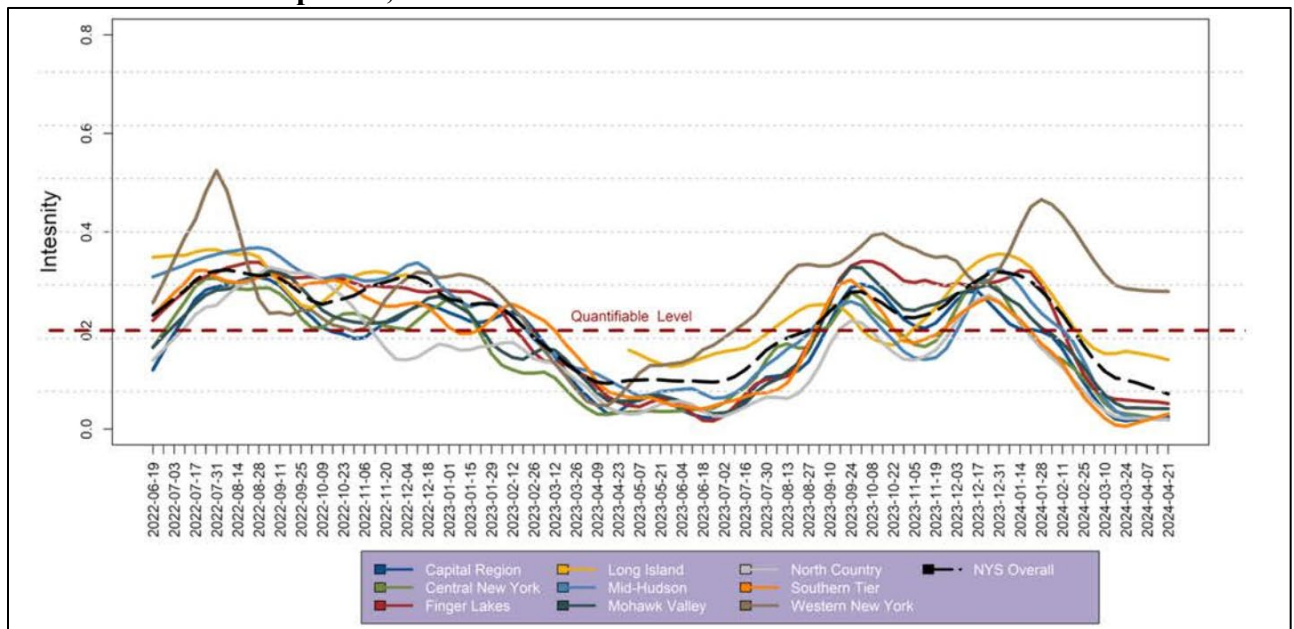


- Amherst
- Big Sister Creek
- Bird Island
- City of Tonawanda
- East Aurora
- Gowanda
- Grand Island
- Kenmore Tonawanda
- Lackawanna
- Southtowns

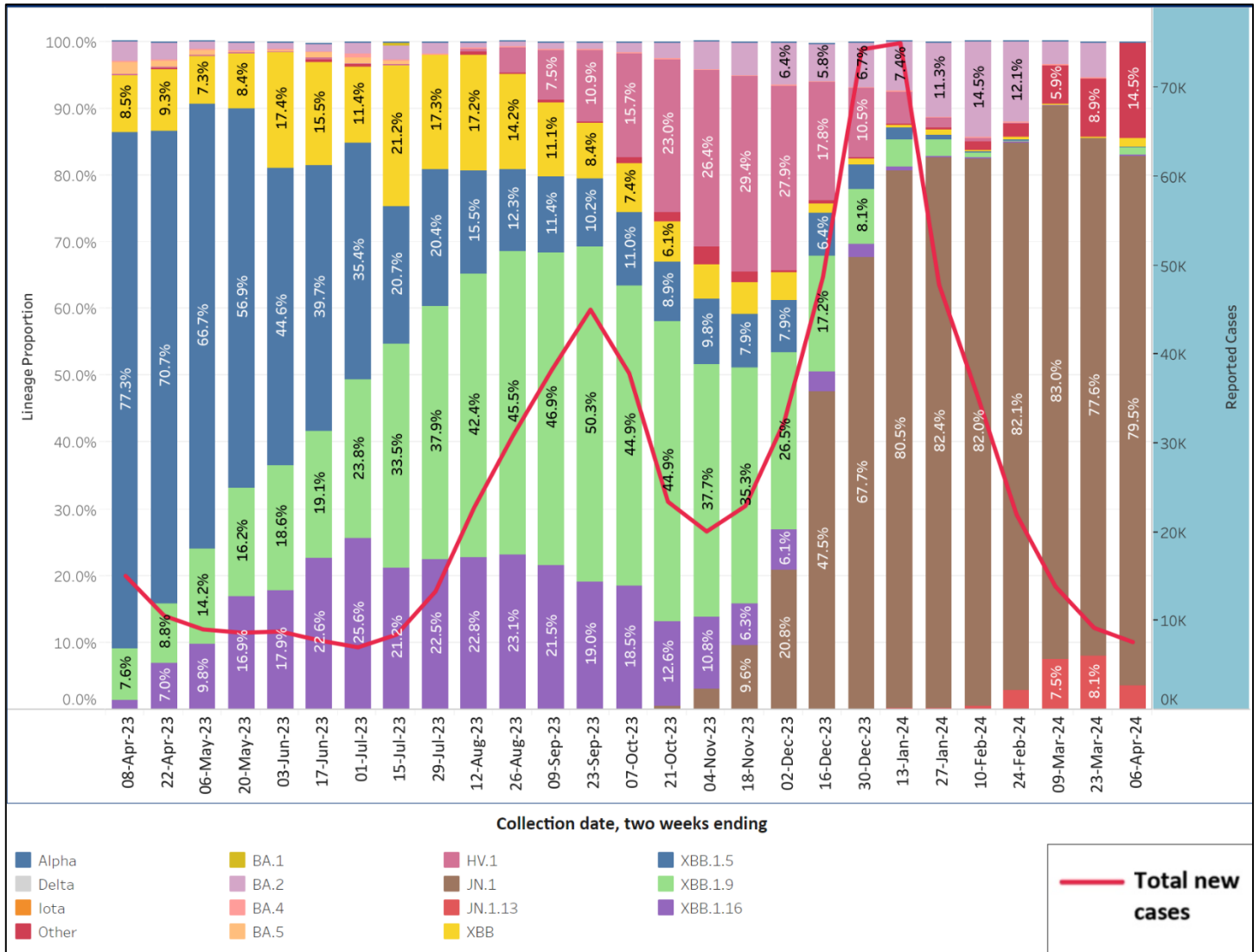
*Additional Sars-CoV-2 wastewater data and analyses are available on the interactive Erie County COVID-19 Wastewater Monitoring Dashboard at: <https://erieny.maps.arcgis.com/apps/dashboards/704e587b389745d5b72f0ff0ef8afc2e>

For more information about Erie County COVID-19 Wastewater Project: <https://storymaps.arcgis.com/stories/976d047d5f0f49789e1fe865dd5407e1>

B. New York State as of April 21, 2024



New York State COVID-19 Variants Sequenced Over the Past 12 Months



Additional Resources:

- [New York State Department of Health COVID-19 Data Tracker](#)
- [Erie County Department of Health - COVID-19 Information](#)
- [Erie County Department of Health- COVID-19 Wastewater Surveillance](#)