



# County of Erie

GALE R. BURSTEIN, MD, MPH, FAAP  
COMMISSIONER OF HEALTH

## WEEKLY COVID-19 SURVEILLANCE REPORT FOR WEEK ENDING AUGUST 24, 2024

### Weekly COVID-19 Summary

#### Positive Tests\*

- Erie County: 455 positive tests were reported. This is a 15% increase from the previous week.
- NYS: 12,542 positive tests were reported. This is a 6% decrease from the previous week.

#### Hospitalizations

- Western New York: 69 patients were newly hospitalized with COVID-19. This is a 34% decrease from the previous week.
- NYS: 1,362 patients were newly hospitalized with COVID-19. This is a 8% decrease from the previous week.

#### Wastewater

- Erie County: SARS-CoV-2 RNA levels have been increasing over the past 5 weeks.
- NYS: Overall SARS-CoV-2 RNA levels have been slightly increasing over the past 11 weeks.

#### Variants

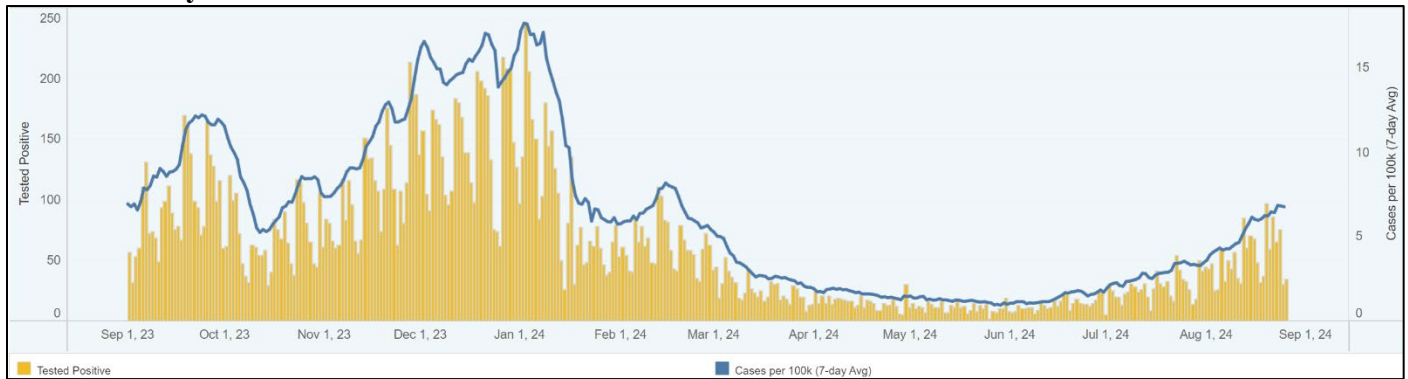
- KP is the most prevalent variant in NYS over the past 12 weeks.

\*Does not include positive self-administered home tests

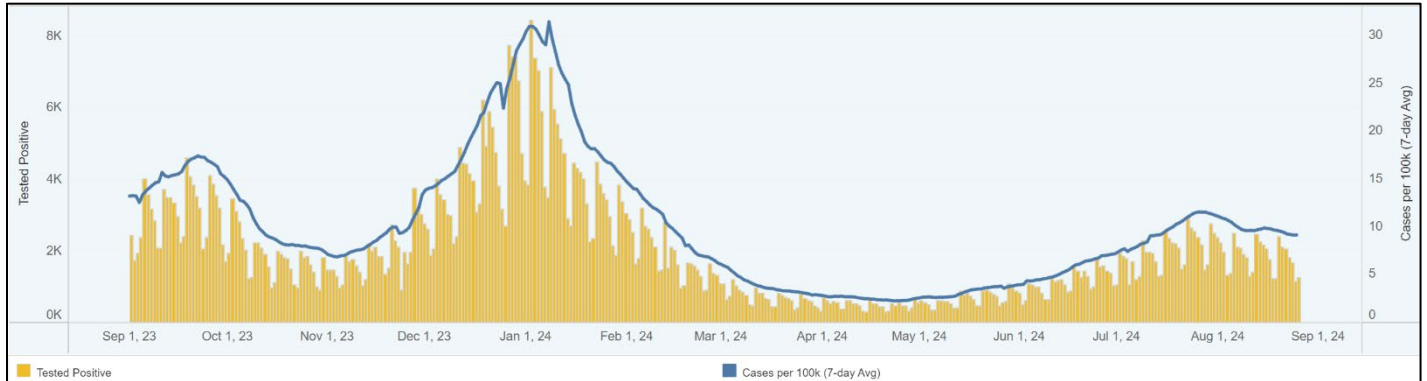
Source: <https://coronavirus.health.ny.gov/covid-19-data-new-york>

### Daily Positive COVID-19 Tests Over the Past 12 Months

#### A. Erie County

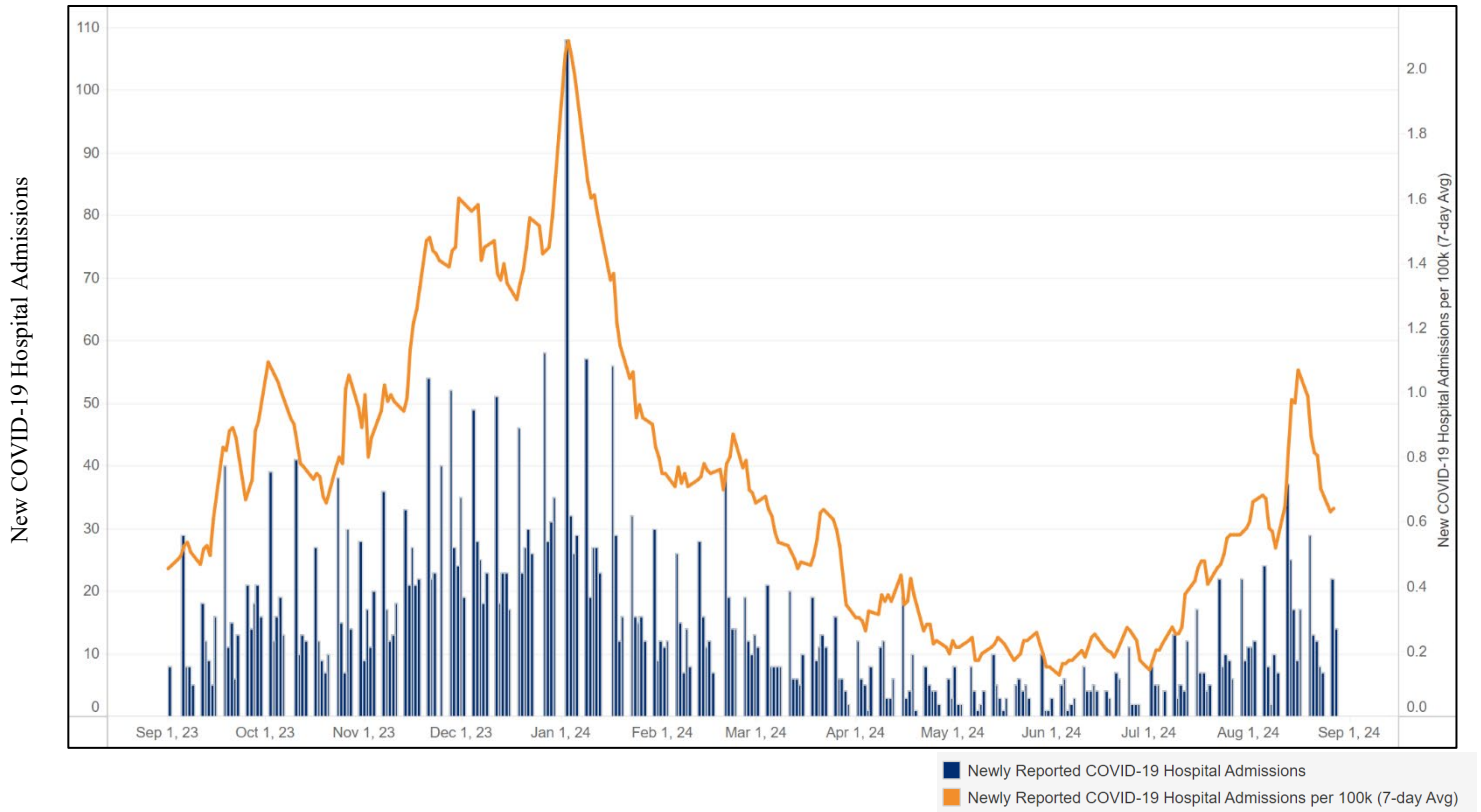


#### B. New York State

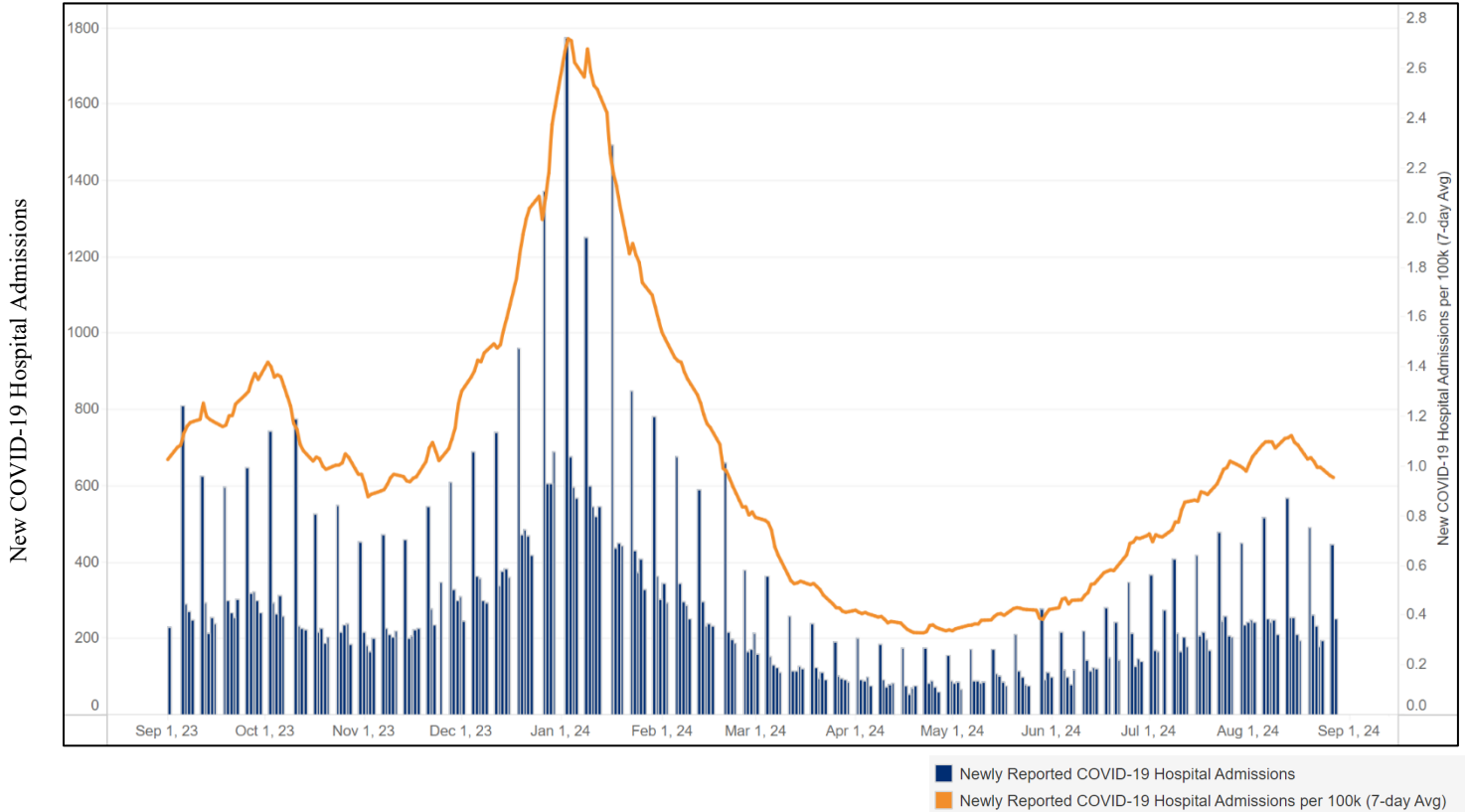


# New Daily COVID-19 Hospitalizations Over the Past 12 Months

## A. Western New York

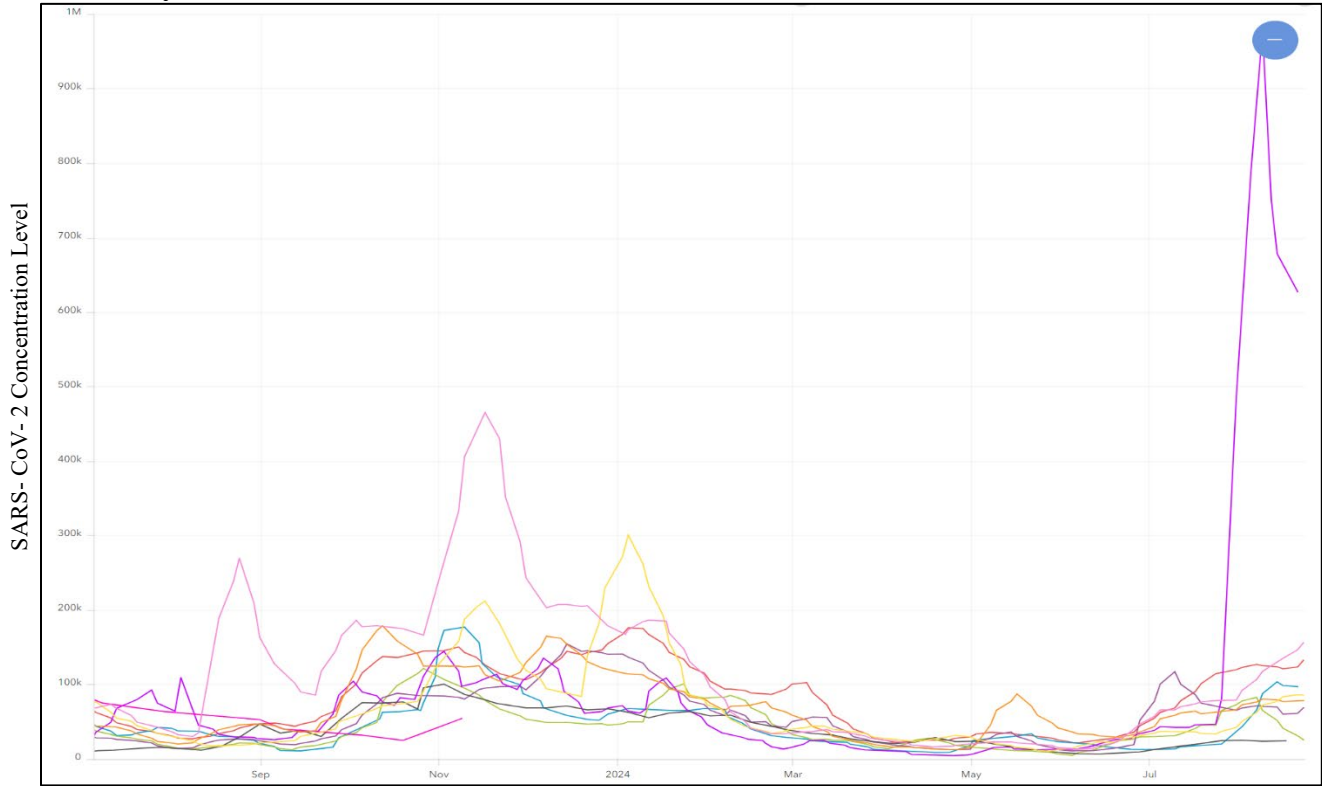


## B. New York State



# SARS- CoV-2 Wastewater Surveillance Trends

## A. Erie County Over the Past 12 Months\*

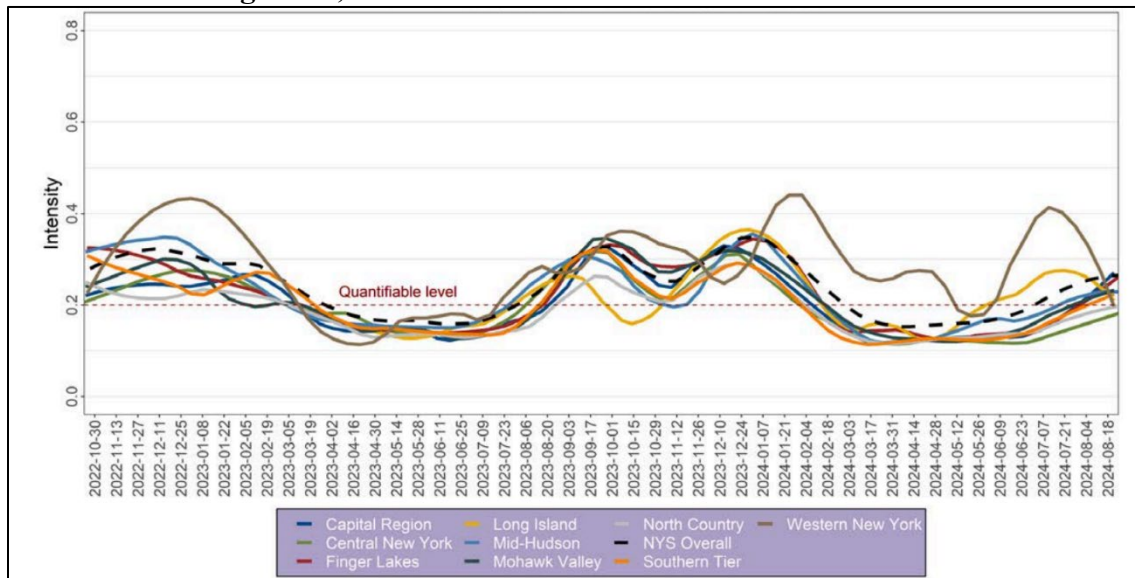


- Amherst
- Big Sister Creek
- Bird Island
- City of Tonawanda
- East Aurora
- Gowanda
- Grand Island
- Kenmore Tonawanda
- Lackawanna
- Southtowns

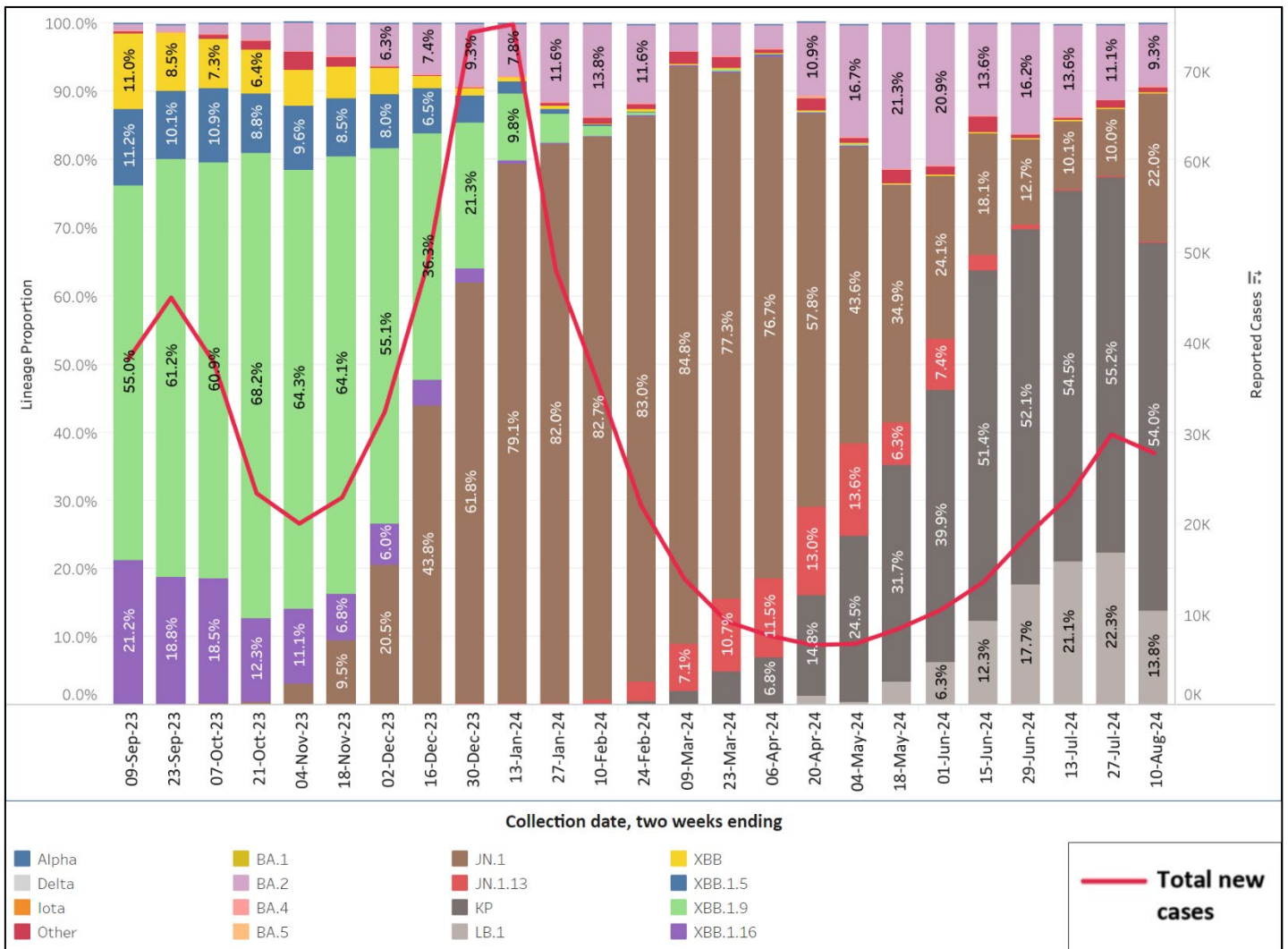
\*Additional Sars-CoV-2 wastewater data and analyses are available on the interactive Erie County COVID-19 Wastewater Monitoring Dashboard at: <https://erieny.maps.arcgis.com/apps/dashboards/704e587b389745d5b72f0ff0ef8afc2e>

For more information about Erie County COVID-19 Wastewater Project: <https://storymaps.arcgis.com/stories/976d047d5f0f49789e1fe865dd5407e1>

## B. New York State as of August 25, 2024



# New York State COVID-19 Variants Sequenced Over the Past 12 Months



## Additional Resources:

- [New York State Department of Health COVID-19 Data Tracker](#)
- [Erie County Department of Health - COVID-19 Information](#)
- [Erie County Department of Health- COVID-19 Wastewater Surveillance](#)