



County of Erie

GALE R. BURSTEIN, MD, MPH, FAAP
COMMISSIONER OF HEALTH

WEEKLY COVID-19 SURVEILLANCE REPORT FOR WEEK ENDING DECEMBER 21, 2024

Weekly COVID-19 Summary

Positive Tests*

- Erie County: 213 positive tests were reported. This is a 14% increase from the previous week.
- NYS: 6,641 positive tests were reported. This is a 30% increase from the previous week.

Hospitalizations

- Western New York: 41 patients were newly hospitalized with COVID-19. This is a 16% increase from the previous week.
- NYS: 678 patients were newly hospitalized with COVID-19. This is a 16% increase from the previous week.

Wastewater

- Erie County: SARS-CoV-2 RNA levels have been slightly decreasing over the past 7 weeks.
- NYS: Overall SARS-CoV-2 RNA levels have been slightly increasing over the past 3 weeks.

Variants

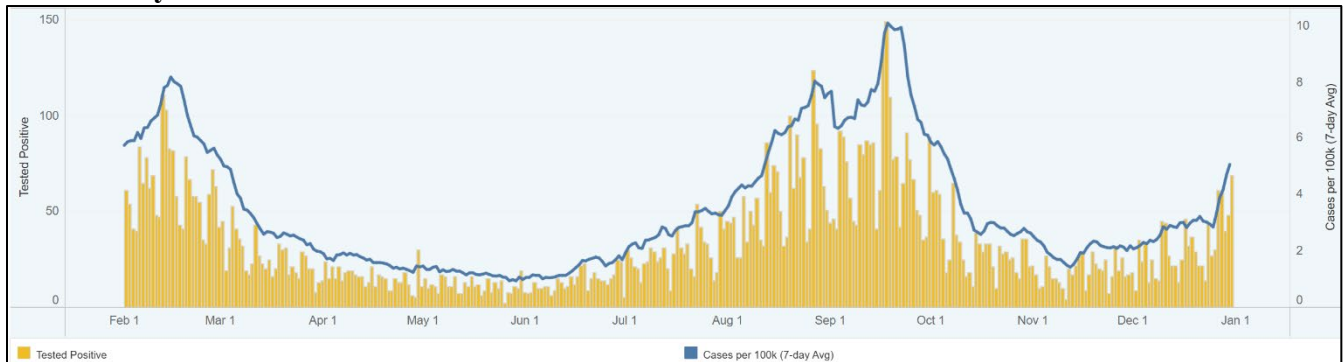
- KP and BA.2 are the most prevalent variants in NYS.

*Does not include positive self-administered home tests

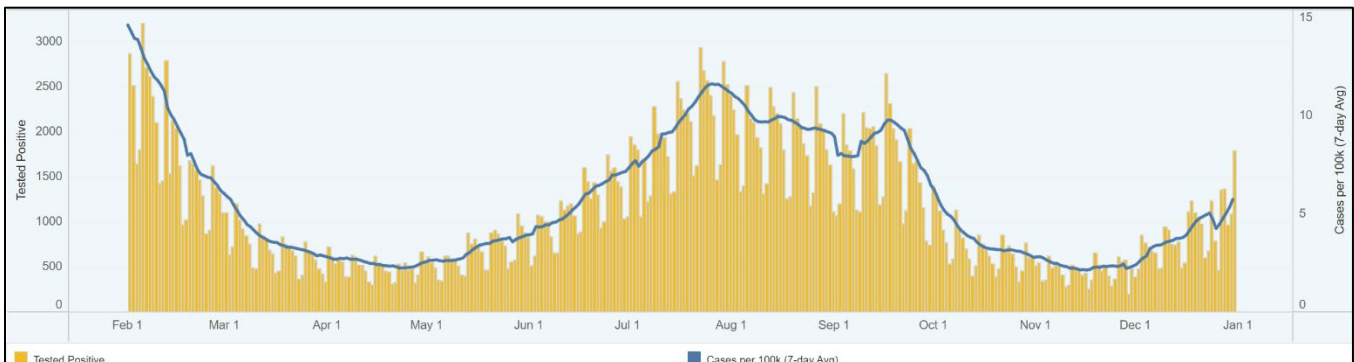
Source: [NYS COVID-19 Data Dashboard](#)

Daily Positive COVID-19 Tests Over the Past 12 Months

A. Erie County

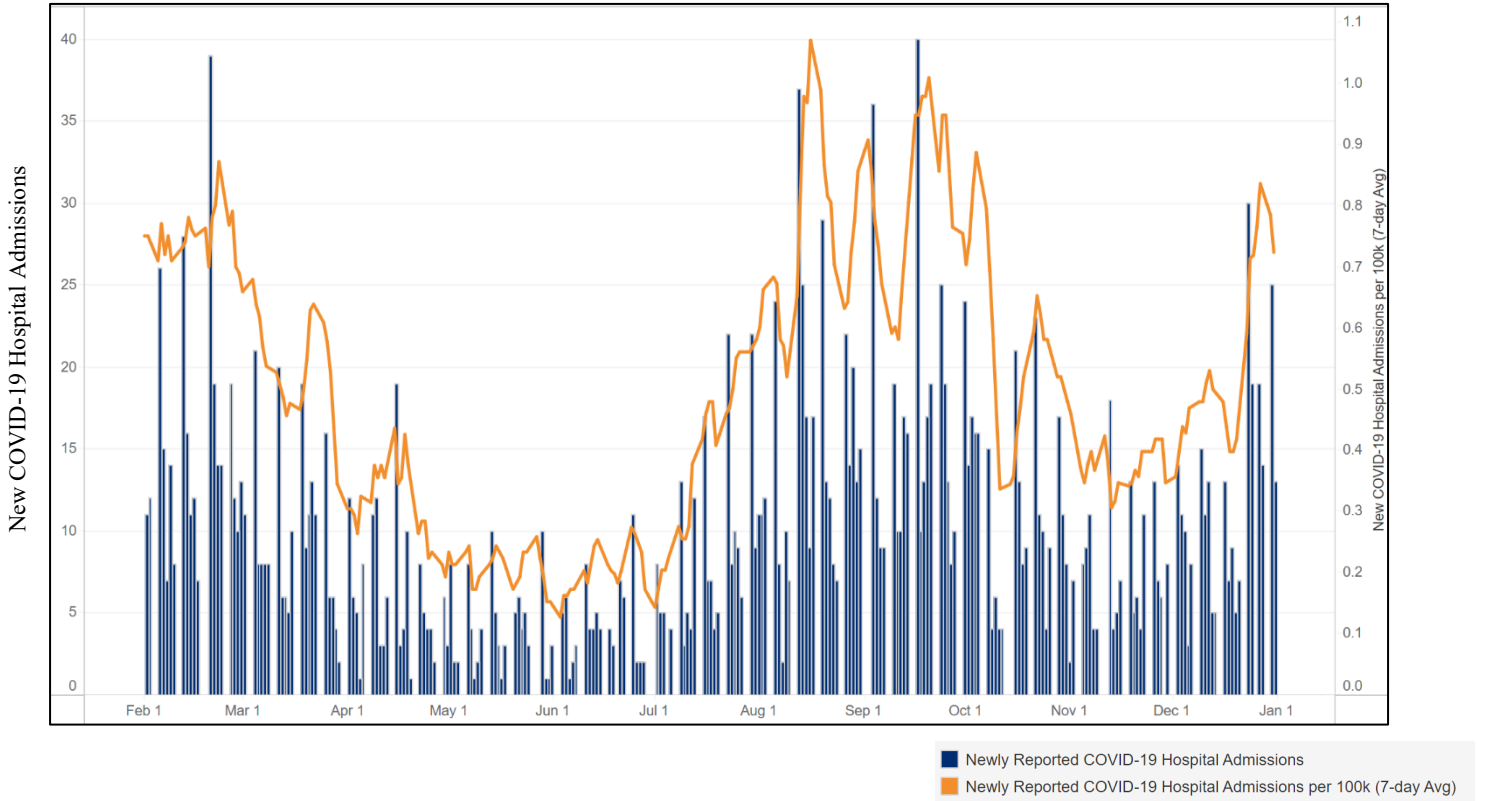


B. New York State

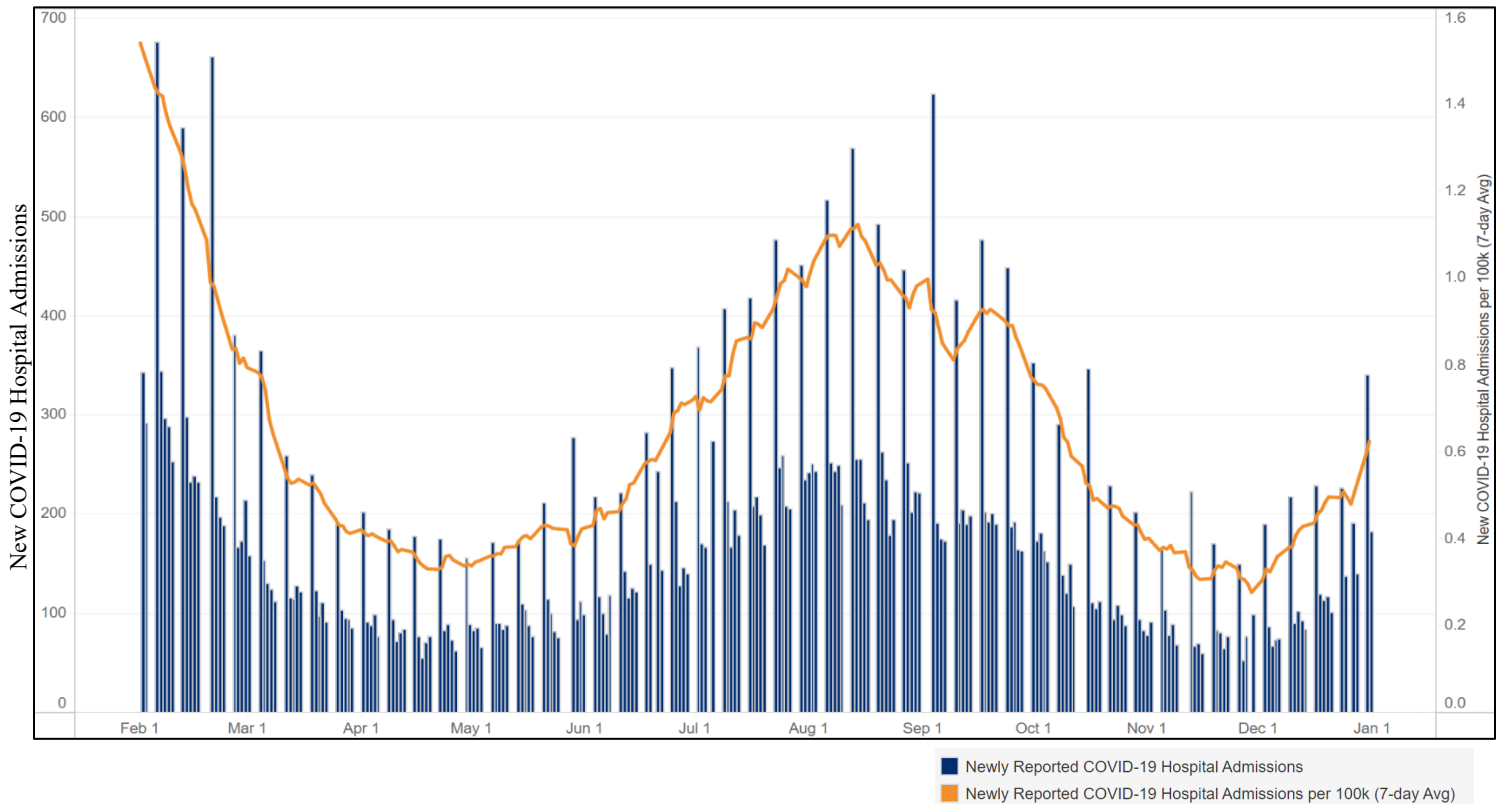


New Daily COVID-19 Hospitalizations Over the Past 12 Months

A. Western New York

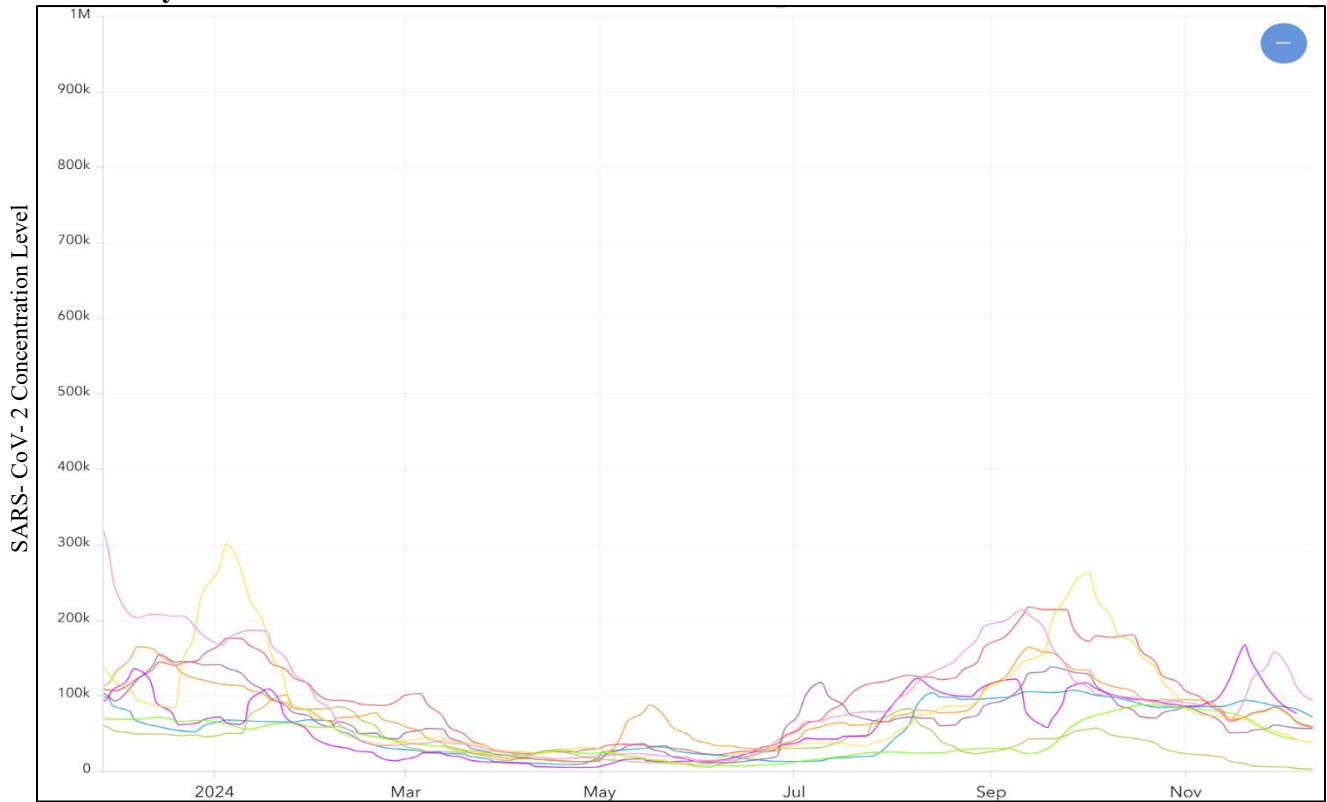


B. New York State



SARS- CoV-2 Wastewater Surveillance Trends

A. Erie County Over the Past 12 Months*

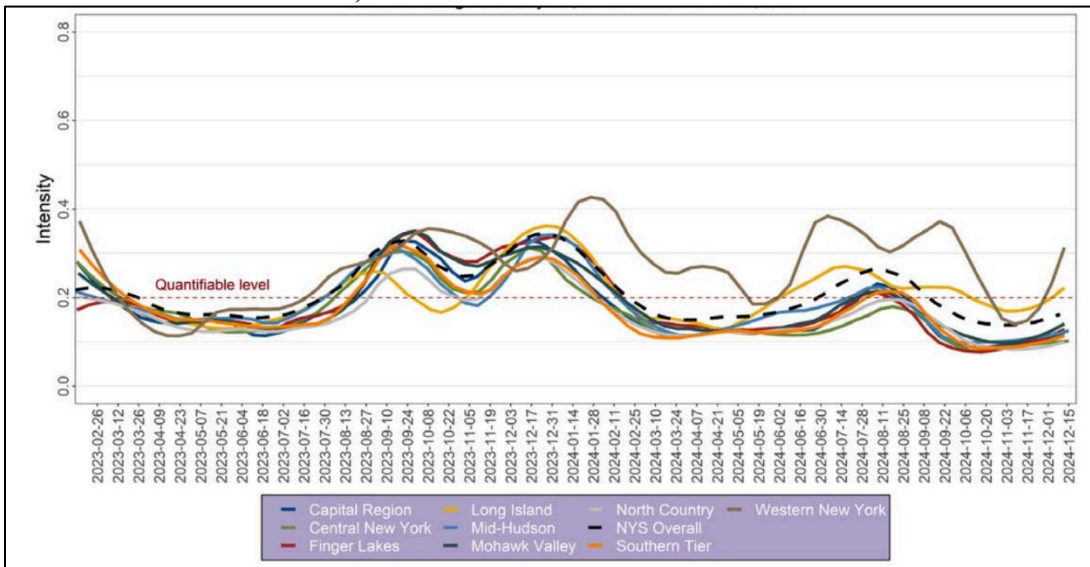


- Amherst
- Big Sister Creek
- Bird Island
- City of Tonawanda
- East Aurora
- Gowanda
- Grand Island
- Kenmore Tonawanda
- Lackawanna
- Southtowns

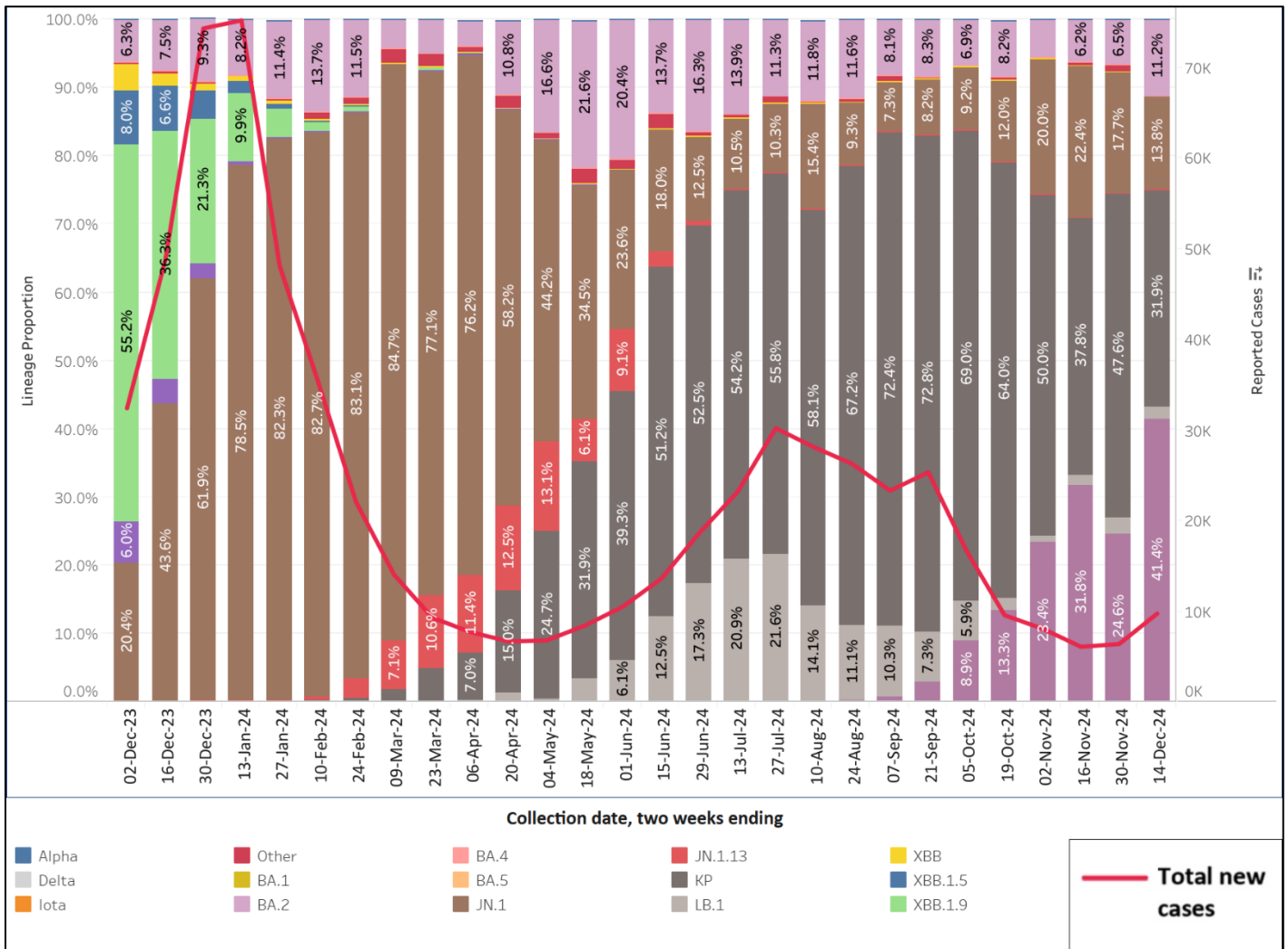
*Additional Sars-CoV-2 wastewater data and analyses are available on the interactive [Erie County COVID-19 Wastewater Monitoring Dashboard](#)

For more information about [Erie County COVID-19 Wastewater Project](#)

B. New York State as of December 15, 2024



New York State COVID-19 Variants Sequenced Over the Past 12 Months



Additional Resources:

- [New York State Department of Health COVID-19 Data Tracker](#)
- [Erie County Department of Health - COVID-19 Information](#)
- [Erie County Department of Health- COVID-19 Wastewater Surveillance](#)