

ADDENDUM NO. 3

COUNTY OF ERIE
DEPARTMENT OF ENVIRONMENT AND PLANNING
ERIE COUNTY SEWER DISTRICT NO. 6
CONTRACT NO. 68
LACKAWANNA OPEN CUT EXCAVATION SANITARY SEWER REPLACEMENTS

All bidders must **fax** or **e-mail** this sheet to Erie County Department of Environment and Planning/Division of Sewerage Management (Attn: Beth Pfalzer), to fax no. 716-858-6257 or e-mail beth.pfalzer@erie.gov. By signing and dating this sheet bidders are stating that their company has received Addendum No. 3 to the Erie County Sewer District No. 6; Contract No. 68; Lackawanna Open Cut Excavation Sanitary Sewer Replacements.

Received: _____

By: _____

Phone: _____

Date: _____

Acknowledge receipt of this Addendum in the space provided on the Bid Form. Failure to do so may subject the Bidder to disqualification for award of the associated Contract.

This Addendum consists of 3 pages plus the attachments, if any, listed on the last page.

ADDENDUM No. 3

Issued: 9/25/2024

Additions and Modifications

PLANS

1. Plans, Sheet No. 4
 - **Replace entire Sheet No. 4 with enclosed revision which includes additional water and gas utilities.** (1 page)

SPECIFICATIONS

1. Specification Section 01 22 13 Unit Price Measurement and Payment, page 1. Modify Bid Form Item No. 1A name to read: **“BID FORM ITEM NO. 1A – INSTALL/REPLACE 8” AND 10” DIA. SDR 35 SEWER”** (1 page)
2. Specification Section 01 22 13 Unit Price Measurement and Payment, page 3, Section 1.3 – BID FORM ITEM NO. 2A – INSTALL/REPLACE STANDARD MANHOLE, A., 3. The sentence shall be modified to read, **“Where indicated on the Plans, the unit price bid for this item shall include costs to furnish and install 4 linear foot minimum pipe stubs, including caps or plugs or couplings to existing sewers; field coring where required; water tight manhole covers with vent pipe assemblies; reducer sections; inside drop pipes, and manhole doghouse base section with a poured concrete foundation.** (1 page)
3. Specification Section 01 22 13 Unit Price Measurement and Payment, page 6, make the following revisions: (1 page)
 - a) Section 1.7, B. 1. Remove the phrase “spot repair” in the last sentence of this section.
 - b) Specification Section 01 22 13 Unit Price Measurement and Payment, page 6, Section 1.8, B. 1. Remove the phrase “spot repair” in the last sentence of this section.
4. ALTERNATE B (PARKVIEW AVENUE) ONLY --- Specification Section 01 22 13 Unit Price Measurement and Payment, pages 18 & 19. Modify language for Bid Item Description for Section 1.40, Bid Form Item No. B.5A – TRENCH PAVEMENT RESTORATION as follows:
 - a) Revise Bid Item name to read: **ALTERNATIVE BID FORM ITEM NO. B.5A - TRENCH PAVEMENT RESTORATION (BASE AND BINDER)**
 - b) Remove language in Section A and replace with the following:
 - A. **Scope of Work:**
 1. **This Bid Form item includes all labor, materials, equipment, processes, products and other items required to restore existing asphalt pavement with**

- base and binder in accordance with the Plans and Details or to match existing conditions.
2. The Bid Form Item is intended to restore existing pavement disturbed by the sewer pipe, lateral pipe, or manhole trenches. The work for this item shall include all labor and materials for trench restoration including furnishing and installing base and binder.
 3. All permits required by State, County and/or Town Highway Department to perform the work, will be obtained and paid for by the Contractor prior to construction. If there is any variance between the provisions of the permits and the Specifications, the provisions of the permit shall supersede those of the Specifications.
 4. Where directed by the Engineer, temporary cold patch pavement shall be installed and maintained until final pavement restoration is completed and accepted. No separate payment shall be made to maintain or reinstall cold patch.
5. ALTERNATE B (PARKVIEW AVENUE) ONLY --- Specification Section 01 22 13 Unit Price Measurement and Payment, page 21, Section 1.10 ALTERNATIVE BID FORM ITEM NO. B.13 TOP COURSE. Remove last sentence that states: **“Square footage of top course installation installed under Bid Form Item No. B.5A is not eligible for payment under this item.”** This makes a revision to have all top course pavement quantity installed and measured under this bid item. (1 page)

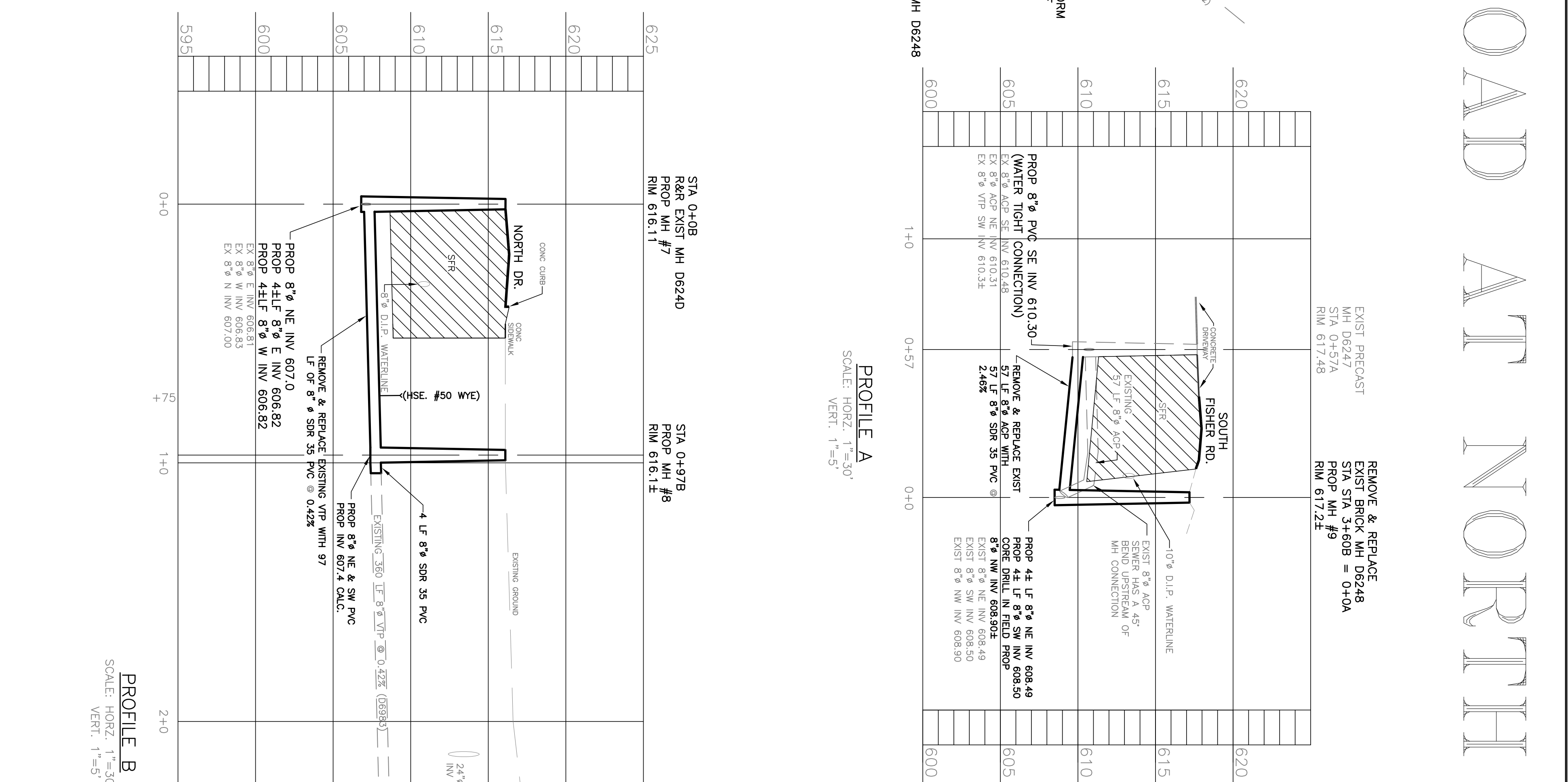
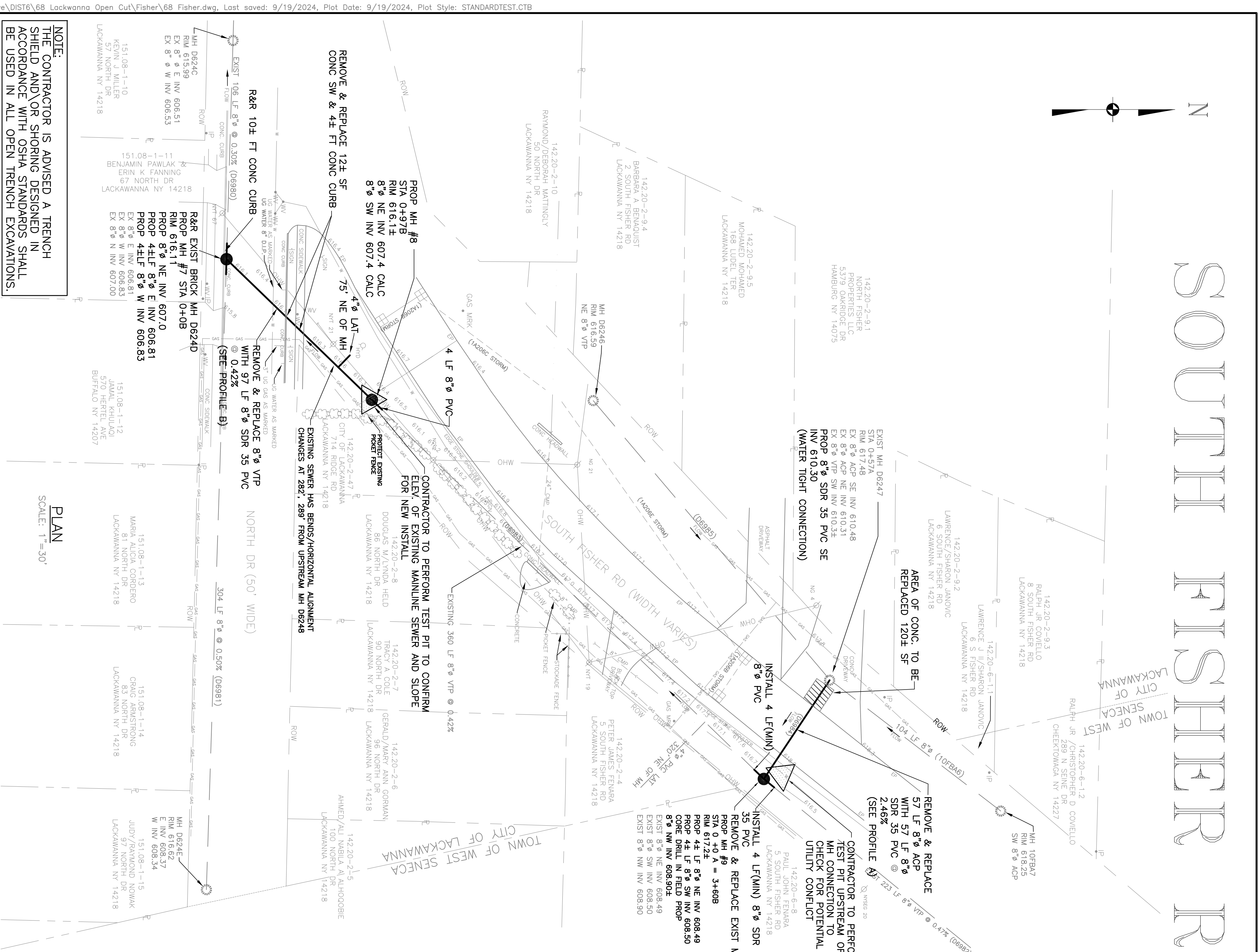
BID FORM

1. Specification Section 00 41 13 Bid Form, page 2 of 13– Revised quantities for Bid Items Nos. 1A, 2A, 5A, 6, and 10, and revised Bid Item name for Bid Item 1A. **Submit Revised page with Bid (1 page).**
2. Specification Section 00 41 13 Bid Form, page 5 of 13– Revised quantity for Bid Items No. B.13 Top Course. Revised Bid Item name for Bid Item B.5A. **Submit Revised page with Bid (1 page). With this edit, Addendum No. 1 revision is superseded and is no longer required to be submitted with bid.**

End of Addendum

CHANGES PLANS (1 page)

CHANGES BID REQUIREMENTS (2 pages) – **SUBMIT WITH BID**



DRIVE

NOTES

1. A MINIMUM OF 4 LF OF 8" PVC SHALL BE INSTALLED E & W OF PROPOSED MH#7, NE OF MH#8 AND NE & SW OF MH #7. CONNECTIONS SHALL BE TO COMPETENT PIPE USING A WATERIGHT SHIELDED FERROD COUPLING.
2. CONTRACTOR SHALL PROTECT EXISTING CONCRETE DRIVEWAY OUTSIDE OF THE REPLACEMENT LIMITS AT EXISTING MH D6247 TO LIMIT DAMAGE. REPLACEMENT OF ANY DAMAGED CONCRETE WILL BE TO THE NEAREST PANEL JOINT.

ASBESTOS ABATEMENT GENERAL NOTES:

1. ASBESTOS ABATEMENT SHALL BE CONDUCTED IN CONFORMANCE WITH THE CONTRACT DOCUMENTS, AND ALL FEDERAL, STATE, AND LOCAL REGULATIONS GOVERNING ASBESTOS ABATEMENT.
2. THE SCOPE OF ABATEMENT WORK INVOLVES THE REMOVAL OF ASBESTOS-CONTAINING MATERIALS AND PRESUMED ASBESTOS-CONTAINING MATERIALS FROM THE AREAS INDICATED ON DRAWING.
3. CONTRACTOR ASSUMES THE RESPONSIBILITY FOR THE MEANS AND METHODS, COORDINATION, SUPERVISION, AND MANAGEMENT UTILIZED TO COMPLETE THE PROJECT IN A TIMELY, PROFESSIONAL, LEGAL, AND SAFE MANNER.
4. CONTRACTOR ACKNOWLEDGES THAT THE QUANTITIES AND ORIENTATION OF ASBESTOS-CONTAINING MATERIALS ARE APPROXIMATE AND INDICATE THE GENERAL AREAS OF REQUIRED ABATEMENT. IT IS THE RESPONSIBILITY OF THE CONTRACTOR TO FIELD VERIFY CONDITIONS IN EACH AREA AND THE QUANTITIES OF ASBESTOS-CONTAINING MATERIALS TO BE ADDRESSED UNDER THIS PROJECT.
5. CONTRACTOR SHALL PROVIDE THEIR EMPLOYEES WITH ADEQUATE PERSONAL PROTECTIVE EQUIPMENT IN ACCORDANCE WITH THE CONTRACTOR'S SITE SPECIFIC HEALTH AND SAFETY PLAN AT ALL TIMES WHEN PERFORMING WORK ON THIS PROJECT. CONTRACTOR'S EMPLOYEES SHALL WEAR PROTECTIVE SUITS AND, AT A MINIMUM, HALF-FACE RESPIRATORS WITH APPROPRIATE FILTRATION CARRIDGES AT ALL TIMES WHILE PERFORMING ASBESTOS ABATEMENT, REGARDLESS OF ANY NEGATIVE EXPOSURE ASSESSMENT REPORTS / DATA.

R & R EXIST
BRICK MH D6248
STA 3+60.8 = STA 0+0.0A
PROP MH #9
RIM 617.24

EXISTING 273.2, F 8\"
0.47% (06932)

4 LF 8\"
SDR 35 PVC

4 LF 8\"
SDR 35 PVC

4 LF 8\"
SDR 35 PVC

4 LF 8\"
SDR 35 PVC

4 LF 8\"
SDR 35 PVC

4 LF 8\"
SDR 35 PVC

4 LF 8\"
SDR 35 PVC

4 LF 8\"
SDR 35 PVC

4 LF 8\"
SDR 35 PVC

4 LF 8\"
SDR 35 PVC

4 LF 8\"
SDR 35 PVC

4 LF 8\"
SDR 35 PVC

4 LF 8\"
SDR 35 PVC

4 LF 8\"
SDR 35 PVC

4 LF 8\"
SDR 35 PVC

4 LF 8\"
SDR 35 PVC

4 LF 8\"
SDR 35 PVC

4 LF 8\"
SDR 35 PVC

4 LF 8\"
SDR 35 PVC

4 LF 8\"
SDR 35 PVC

4 LF 8\"
SDR 35 PVC

4 LF 8\"
SDR 35 PVC

4 LF 8\"
SDR 35 PVC

4 LF 8\"
SDR 35 PVC

4 LF 8\"
SDR 35 PVC

4 LF 8\"
SDR 35 PVC

4 LF 8\"
SDR 35 PVC

4 LF 8\"
SDR 35 PVC

4 LF 8\"
SDR 35 PVC

4 LF 8\"
SDR 35 PVC

4 LF 8\"
SDR 35 PVC

4 LF 8\"
SDR 35 PVC

4 LF 8\"
SDR 35 PVC

4 LF 8\"
SDR 35 PVC

4 LF 8\"
SDR 35 PVC

4 LF 8\"
SDR 35 PVC

4 LF 8\"
SDR 35 PVC

4 LF 8\"
SDR 35 PVC

4 LF 8\"
SDR 35 PVC

4 LF 8\"
SDR 35 PVC

4 LF 8\"
SDR 35 PVC

4 LF 8\"
SDR 35 PVC

4 LF 8\"
SDR 35 PVC

4 LF 8\"
SDR 35 PVC

4 LF 8\"
SDR 35 PVC

4 LF 8\"
SDR 35 PVC

4 LF 8\"
SDR 35 PVC

4 LF 8\"
SDR 35 PVC

4 LF 8\"
SDR 35 PVC

4 LF 8\"
SDR 35 PVC

4 LF 8\"
SDR 35 PVC

4 LF 8\"
SDR 35 PVC

4 LF 8\"
SDR 35 PVC

4 LF 8\"
SDR 35 PVC

4 LF 8\"
SDR 35 PVC

4 LF 8\"
SDR 35 PVC

4 LF 8\"
SDR 35 PVC

4 LF 8\"
SDR 35 PVC

4 LF 8\"
SDR 35 PVC

4 LF 8\"
SDR 35 PVC

4 LF 8\"
SDR 35 PVC

4 LF 8\"
SDR 35 PVC

4 LF 8\"
SDR 35 PVC

4 LF 8\"
SDR 35 PVC

4 LF 8\"
SDR 35 PVC

4 LF 8\"
SDR 35 PVC

4 LF 8\"
SDR 35 PVC

4 LF 8\"
SDR 35 PVC

4 LF 8\"
SDR 35 PVC

4 LF 8\"
SDR 35 PVC

4 LF 8\"
SDR 35 PVC

4 LF 8\"
SDR 35 PVC

4 LF 8\"
SDR 35 PVC

4 LF 8\"
SDR 35 PVC

4 LF 8\"
SDR 35 PVC

4 LF 8\"
SDR 35 PVC

4 LF 8\"
SDR 35 PVC

4 LF 8\"
SDR 35 PVC

4 LF 8\"
SDR 35 PVC

4 LF 8\"
SDR 35 PVC

4 LF 8\"
SDR 35 PVC

4 LF 8\"
SDR 35 PVC

4 LF 8\"
SDR 35 PVC

4 LF 8\"
SDR 35 PVC

4 LF 8\"
SDR 35 PVC

4 LF 8\"
SDR 35 PVC

4 LF 8\"
SDR 35 PVC

4 LF 8\"
SDR 35 PVC

4 LF 8\"
SDR 35 PVC

4 LF 8\"
SDR 35 PVC

4 LF 8\"
SDR 35 PVC

4 LF 8\"
SDR 35 PVC

4 LF 8\"
SDR 35 PVC

4 LF 8\"
SDR 35 PVC

4 LF 8\"
SDR 35 PVC

4 LF 8\"
SDR 35 PVC

4 LF 8\"
SDR 35 PVC

4 LF 8\"
SDR 35 PVC

4 LF 8\"
SDR 35 PVC

4 LF 8\"
SDR 35 PVC

4 LF 8\"
SDR 35 PVC

4 LF 8\"
SDR 35 PVC

4 LF 8\"
SDR 35 PVC

4 LF 8\"
SDR 35 PVC

4 LF 8\"
SDR 35 PVC

4 LF 8\"
SDR 35 PVC

4 LF 8\"
SDR 35 PVC

4 LF 8\"
SDR 35 PVC

4 LF 8\"
SDR 35 PVC

4 LF 8\"
SDR 35 PVC

4 LF 8\"
SDR 35 PVC

4 LF 8\"
SDR 35 PVC

4 LF 8\"
SDR 35 PVC

4 LF 8\"
SDR 35 PVC

4 LF 8\"
SDR 35 PVC

4 LF 8\"
SDR 35 PVC

4 LF 8\"
SDR 35 PVC

4 LF 8\"
SDR 35 PVC

4 LF 8\"
SDR 35 PVC

4 LF 8\"
SDR 35 PVC

4 LF 8\"
SDR 35 PVC

4 LF 8\"
SDR 35 PVC

4 LF 8\"
SDR 35 PVC

4 LF 8\"
SDR 35 PVC

4 LF 8\"
SDR 35 PVC

4 LF 8\"
SDR 35 PVC

4 LF 8\"
SDR 35 PVC

4 LF 8\"
SDR 35 PVC

4 LF 8\"
SDR 35 PVC

4 LF 8\"
SDR 35 PVC

4 LF 8\"
SDR 35 PVC

4 LF 8\"
SDR 35 PVC

4 LF 8\"
SDR 35 PVC

4 LF 8\"
SDR 35 PVC

4 LF 8\"
SDR 35 PVC

4 LF 8\"
SDR 35 PVC

4 LF 8\"
SDR 35 PVC

4 LF 8\"
SDR 35 PVC

4 LF 8\"
SDR 35 PVC

4 LF 8\"
SDR 35 PVC

4 LF 8\"
SDR 35 PVC

4 LF 8\"
SDR 35 PVC

4 LF 8\"
SDR 35 PVC

4 LF 8\"
SDR 35 PVC

4 LF 8\"
SDR 35 PVC

4 LF 8\"
SDR 35 PVC

4 LF 8\"
SDR 35 PVC

4 LF 8\"
SDR 35 PVC

4 LF 8\"
SDR 35 PVC

4 LF 8\"
SDR 35 PVC

4 LF 8\"
SDR 35 PVC

4 LF 8\"
SDR 35 PVC

4 LF 8\"
SDR 35 PVC

4 LF 8\"
SDR 35 PVC

4 LF 8\"
SDR 35 PVC

4 LF 8\"
SDR 35 PVC

4 LF 8\"
SDR 35 PVC

4 LF 8\"
SDR 35 PVC

4 LF 8\"
SDR 35 PVC

4 LF 8\"
SDR 35 PVC

4 LF 8\"
SDR 35 PVC

4 LF 8\"
SDR 35 PVC

4 LF 8\"
SDR 35 PVC

4 LF 8\"
SDR 35 PVC

4 LF 8\"
SDR 35 PVC

4 LF 8\"
SDR 35 PVC

4 LF 8\"
SDR 35 PVC

4 LF 8\"
SDR 35 PVC

4 LF 8\"
SDR 35 PVC

4 LF 8\"
SDR 35 PVC

4 LF 8\"
SDR 35 PVC

4 LF 8\"
SDR 35 PVC

4 LF 8\"
SDR 35 PVC

4 LF 8\"
SDR 35 PVC

4 LF 8\"
SDR 35 PVC

4 LF 8\"
SDR 35 PVC

4 LF 8\"
SDR 35 PVC

4 LF 8\"
SDR 35 PVC

4 LF 8\"
SDR 35 PVC

4 LF 8\"
SDR 35 PVC

4 LF 8\"
SDR 35 PVC

4 LF 8\"
SDR 35 PVC

4 LF 8\"
SDR 35 PVC

4 LF 8\"
SDR 35 PVC

4 LF 8\"
SDR 35 PVC

4 LF 8\"
SDR 35 PVC

4 LF 8\"
SDR 35 PVC

4 LF 8\"
SDR 35 PVC

4 LF 8\"
SDR 35 PVC

4 LF 8\"
SDR 35 PVC

4 LF 8\"
SDR 35 PVC

4 LF 8\"
SDR 35 PVC

4 LF 8\"
SDR 35 PVC

4 LF 8\"
SDR 35 PVC

4 LF 8\"
SDR 35 PVC

4 LF 8\"
SDR 35 PVC

4 LF 8\"
SDR 35 PVC

4 LF 8\"
SDR 35 PVC

4 LF 8\"
SDR 35 PVC

4 LF 8\"
SDR 35 PVC

4 LF 8\"
SDR 35 PVC

4 LF 8\"
SDR 35 PVC

4 LF 8\"
SDR 35 PVC

4 LF 8\"
SDR 35 PVC

4 LF 8\"
SDR 35 PVC

4 LF 8\"
SDR 35 PVC

4 LF 8\"
SDR 35 PVC

4 LF 8\"
SDR 35 PVC

4 LF 8\"
SDR 35 PVC

4 LF 8\"
SDR 35 PVC

4 LF 8\"
SDR 35 PVC

4 LF 8\"
SDR 35 PVC

4 LF 8\"
SDR 35 PVC

4 LF 8\"
SDR 35 PVC

4 LF 8\"
SDR 35 PVC

4 LF 8\"
SDR 35 PVC

4 LF 8\"
SDR 35 PVC

4 LF 8\"
SDR 35 PVC

4 LF 8\"
SDR 35 PVC

4 LF 8\"
SDR 35 PVC

4 LF 8\"
SDR 35 PVC

4 LF 8\"
SDR 35 PVC

4 LF 8\"
SDR 35 PVC

4 LF 8\"
SDR 35 PVC

4 LF 8\"
SDR 35 PVC

4 LF 8\"
SDR 35 PVC

4 LF 8\"
SDR 35 PVC

4 LF 8\"
SDR 35 PVC

4 LF 8\"
SDR 35 PVC

4 LF 8\"
SDR 35 PVC

4 LF 8\"
SDR 35 PVC

4 LF 8\"
SDR 35 PVC

4 LF 8\"
SDR 35 PVC

4 LF 8\"
SDR 35 PVC

4 LF 8\"
SDR 35 PVC

4 LF 8\"
SDR 35 PVC

4 LF 8\"
SDR 35 PVC

4 LF 8\"
SDR 35 PVC

4 LF 8\"
SDR 35 PVC

4 LF 8\"
SDR 35 PVC

4 LF 8\"
SDR 35 PVC

4 LF 8\"
SDR 35 PVC

4 LF 8\"
SDR 35 PVC

4 LF 8\"
SDR 35 PVC

4 LF 8\"
SDR 35 PVC

4 LF 8\"
SDR 35 PVC

4 LF 8\"
SDR 35 PVC

4 LF 8\"
SDR 35 PVC

4 LF 8\"
SDR 35 PVC

4 LF 8\"
SDR 35 PVC

4 LF 8\"
SDR 35 PVC

4 LF 8\"
SDR 35 PVC

4 LF 8\"
SDR 35 PVC

4 LF 8\"
SDR 35 PVC

4 LF 8\"
SDR 35 PVC

4 LF 8\"
SDR 35 PVC

4 LF 8\"
SDR 35 PVC

4 LF 8\"
SDR 35 PVC

4 LF 8\"
SDR 35 PVC

4 LF 8\"
SDR 35 PVC

4 LF 8\"
SDR 35 PVC

4 LF 8\"
SDR 35 PVC

4 LF 8\"
SDR 35 PVC

4 LF 8\"
SDR 35 PVC

4 LF 8\"
SDR 35 PVC

4 LF 8\"
SDR 35 PVC

4 LF 8\"
SDR 35 PVC

4 LF 8\"
SDR 35 PVC

4 LF 8\"
SDR 35 PVC

4 LF 8\"
SDR 35 PVC

4 LF 8\"
SDR 35 PVC

4 LF 8\"
SDR 35 PVC

4 LF 8\"
SDR 35 PVC

4 LF 8\"
SDR 35 PVC

4 LF 8\"
SDR 35 PVC

4 LF 8\"
SDR 35 PVC

4 LF 8\"
SDR 35 PVC

4 LF 8\"
SDR 35 PVC

4 LF 8\"
SDR 35 PVC

4 LF 8\"
SDR 35 PVC

4 LF 8\"
SDR 35 PVC

4 LF 8\"
SDR 35 PVC

4 LF 8\"
SDR 35 PVC

4 LF 8\"
SDR 35 PVC

4 LF 8\"
SDR 35 PVC

4 LF 8\"
SDR 35 PVC

4 LF 8\"
SDR 35 PVC

4 LF 8\"
SDR 35 PVC

4 LF 8\"
SDR 35 PVC

4 LF 8\"
SDR 35 PVC

4 LF 8\"
SDR 35 PVC

4 LF 8\"
SDR 35 PVC

4 LF 8\"
SDR 35 PVC

4 LF 8\"
SDR 35 PVC

4 LF 8\"
SDR 35 PVC

4 LF 8\"
SDR 35 PVC

4 LF 8\"
SDR 35 PVC

4 LF 8\"
SDR 35 PVC

4 LF 8\"
SDR 35 PVC

4 LF 8\"
SDR 35 PVC

4 LF 8\"
SDR 35 PVC

4 LF 8\"
SDR 35 PVC

4 LF 8\"
SDR 35 PVC

4 LF 8\"
SDR 35 PVC

4 LF 8\"
SDR 35 PVC

4 LF 8\"
SDR 35 PVC

4 LF 8\"
SDR 35 PVC

4 LF 8\"
SDR 35 PVC

4 LF 8\"
SDR 35 PVC

4 LF 8\"
SDR 35 PVC

4 LF 8\"
SDR 35 PVC

4 LF 8\"
SDR 35 PVC

4 LF 8\"
SDR 35 PVC

4 LF 8\"
SDR 35 PVC

4 LF 8\"
SDR 35 PVC

4 LF 8\"
SDR 35 PVC

4 LF 8\"
SDR 35 PVC

4 LF 8\"
SDR 35 PVC

4 LF 8\"
SDR 35 PVC

4 LF 8\"
SDR 35 PVC

4 LF 8\"
SDR 35 PVC

4 LF 8\"
SDR 35 PVC

4 LF 8\"
SDR 35 PVC

4 LF 8\"
SDR 35 PVC

4 LF 8\"
SDR 35 PVC

4 LF 8\"
SDR 35 PVC

4 LF 8\"
SDR 35 PVC

4 LF 8\"
SDR 35 PVC

4 LF 8\"
SDR 35 PVC

4 LF 8\"
SDR 35 PVC

4 LF 8\"
SDR 35 PVC

4 LF 8\"
SDR 35 PVC

SECTION 01 22 13
UNIT PRICE MEASUREMENT AND PAYMENT

PART I – GENERAL

1.1 SUMMARY

- A. This section includes each unit priced Bid Form item, the scope of work intended to be included in that item, and the way in which work will be measured. The scope of work in this section is intended to provide a general description of work for Bid Form item differentiation.
- B. Individual Work Orders issued to the Contractor shall include detailed descriptions of the Work. Applicable Bid Form items intended to be used will be identified and shall provide for, and include everything necessary for, the proper and complete orderly execution and finishing of the Work.
- C. Related Sections:
 - 1. Section 01 11 13 – Work Covered by Contract Documents
 - 2. Section 01 21 16 – Contingency Allowances
 - 3. Section 01 26 10 – Contract Modification Procedures
 - 4. Section 01 29 76 – Progress Payment Procedures
- D. Section 01 11 13 Work Covered by Contract Documents contains a general listing of all the Work included in the Contract Documents.

BASE BID

1.2 BID FORM ITEM NO. 1A - INSTALL/REPLACE 8" AND 10" DIA. SDR 35 SEWER

A. Scope of Work

- 1. This Bid Form item includes all labor, materials, equipment, processes, products and other items required to perform gravity sanitary sewer pipe installations and replacements via open cut excavation at the locations and depths indicated on the Plans.
- 2. The Work under this Item includes, but is not limited to, the following: homeowner notifications; protection of existing utilities including locating existing buried electric, gas, telephone, water, sewer, laterals, and other utilities in advance of pipe laying, and establishing their exact location and grade; protecting and supporting utilities including all house service lines (water, sewer, gas, electric, telephone and drain) and utilities less than 4-inches in diameter, whether shown on the Plans or not; handling of water in

than 5'-0" in depth; pumping and/or bailing as required; concrete benchwork; perforated plastic pipe for testing, where directed; bedding; backfill with excavated materials or soil; mortar; coatings; making all watertight pipe-to-manhole connections identified on the Plans; and other incidentals; testing of completed work, where directed; and all other work or expense required for a complete installation and not included in other Bid Form Items. All manholes shall conform in all respects to Section 02376 of these Specifications.

3. Where indicated on the Plans, the unit price bid for this item shall include costs to furnish and install 4 linear foot minimum pipe stubs, including caps or plugs or couplings to existing sewers; field coring where required; water tight manhole covers with vent pipe assemblies; reducer sections; inside drop pipes, and manhole doghouse base section with a poured concrete foundation.

B. Measurement and Payment

1. Measurement of work completed under this Bid Form item shall be the measured number of manholes installed, tested, and approved by the Engineer, as measured by the Engineer.
2. If Engineer determines any work to be defective, deductions may be taken from the payment in accordance with GC Article 14.03-F.

1.4 BID FORM ITEM NO. 2B – INSTALL END OF LINE 8" DIA. CLEANOUT

A. Scope of Work

1. This Bid Form item includes all labor, materials, equipment, processes, products and other items required to furnish and install complete 8-inch diameter end of line cleanout assemblies and heavy duty covers.
2. The work shall include furnishing all labor, materials, tools, equipment and incidentals required to install 8-inch diameter PVC end of line cleanouts at the depths required, including all sawcutting, excavation, including rock, to the required depths; shoring and bracing; handling of water and sewage flows, maintenance of existing flows; removal and disposal of excavated material; removal and proper disposal of all existing lateral pipe; furnishing and laying pipe and making joints; making all connections; pipe bedding; filling authorized excavation with soil or excavated material; compaction; elbows, fittings, and couplings; heavy duty cleanout out cover; concrete encasement of cover; as necessary and all other work required for a complete installation.

B. Measurement and Payment

measured cubic yards of compacted select material backfill installed within the specified pay limits, which shall be measured as the sewer trench pay limit width multiplied by the number of linear feet of sewer installed, or the actual cubic yards of compacted select material backfill installed where approved in writing by the Engineer.

Deleted: spot repair

2. Payment under this Bid Form item shall be the measured cubic yards of compacted select material backfill installed within the specified pay limits, as measured by the Engineer.
3. If Engineer determines any work to be defective, deductions may be taken from the payment in accordance with GC Article 14.03-F.

1.8 BID FORM ITEM NO. 5A – TRENCH PAVEMENT RESTORATION

A. Scope of Work

1. This Bid Form item includes all labor, materials, equipment, processes, products and other items required to restore existing asphalt pavement in accordance with the Plans and Details or to match existing conditions.
2. The Bid Form Item is intended to restore existing pavement disturbed by the sewer pipe, lateral pipe, or manhole trenches. The work for this item shall include all labor and materials for trench restoration including furnishing and installing base, binder, tack coat, and top course.
3. All permits required by State, County and/or Town Highway Department to perform the work, will be obtained and paid for by the Contractor prior to construction. If there is any variance between the provisions of the permits and the Specifications, the provisions of the permit shall supersede those of the Specifications.
4. Where directed by the Engineer, temporary cold patch pavement shall be installed and maintained until final pavement restoration is completed and accepted. No separate payment shall be made to maintain or reinstall cold patch.

B. Measurement and Payment:

1. Measurement of work completed under this Bid Form item shall be the measured square footage installed within the specified pay limits, measured as the sewer trench pay limit width multiplied by the number of linear feet of sewer installed, as measured along the centerline of the improvements.

Deleted: spot repair

B. Measurement and Payment: If this item is awarded, measurement and payment shall be consistent with Bid Form Item No. 3B (Base Bid).

1.38 ALTERNATIVE BID FORM ITEM NO. B.3E – INSTALL SANITARY CLEANOUT

A. Scope of Work: This Bid Form item includes all labor, materials, equipment, processes, products and other items required to install sanitary sewer lateral pipe cleanouts via open cut excavation at the locations indicated on the Plans or where directed by the Engineer. The work shall include furnishing, placing, and installing 6-inch diameter sanitary cleanouts at any depth, including, but not limited to the following: shoring and bracing; handling of water and sewage flows, maintenance of existing flows; excavation, removal, and disposal of excavated material; removal and proper disposal of all existing lateral pipe; furnishing and laying pipe; pipe bedding; filling authorized excavation with soil or excavated material and compaction, as required; 6-inch to 4-inch diameter reducers, as required; or couplings as necessary to reconnect all live laterals to existing competent solid pipe and all other work required for a complete installation.

B. Measurement and Payment

1. If this item is awarded, measurement of work completed under this Bid Form Item shall be the number of cleanouts installed as measured and accepted by the Engineer.
2. Payment under this Bid Form item shall be the number of cleanouts installed, as measured by the Engineer, less any deductions.
3. If Engineer determines any work to be defective, deductions may be taken from the payment in accordance with GC Article 14.03-F.

1.39 ALTERNATIVE BID FORM ITEM NO. B.4 - SELECT MATERIAL BACKFILL

- A. Scope of Work: Refer to Section 01 23 00, Alternatives. Scope of Work shall be consistent with Bid Form Item No. 4 (Base Bid).
- B. Measurement and Payment: If this item is awarded, measurement and payment shall be consistent with Bid Form Item No. 4 (Base Bid).

1.40 ALTERNATIVE BID FORM ITEM NO. B.5A - TRENCH PAVEMENT RESTORATION (BASE AND BINDER)

A. Scope of Work:

1. This Bid Form item includes all labor, materials, equipment, processes, products and other items required to restore existing asphalt pavement with base and binder in accordance with the Plans and Details or to match existing

Deleted: Refer to Section 01 23 00, Alternatives. Scope of Work shall be consistent with Bid Form Item No. 5A (Base Bid).

conditions.

2. The Bid Form Item is intended to restore existing pavement disturbed by the sewer pipe, lateral pipe, or manhole trenches. The work for this item shall include all labor and materials for trench restoration including furnishing and installing base and binder.

3. All permits required by State, County and/or Town Highway Department to perform the work, will be obtained and paid for by the Contractor prior to construction. If there is any variance between the provisions of the permits and the Specifications, the provisions of the permit shall supersede those of the Specifications.

4. Where directed by the Engineer, temporary cold patch pavement shall be installed and maintained until final pavement restoration is completed and accepted. No separate payment shall be made to maintain or reinstall cold patch.

B. Measurement and Payment: If this item is awarded, measurement and payment shall be consistent with Bid Form Item No. 5A (Base Bid).

1.2 ALTERNATIVE BID FORM ITEM NO. B.5B - CONCRETE ROADBASE RESTORATION

A. Scope of Work: Refer to Section 01 23 00, Alternatives. Scope of Work shall be consistent with Bid Form Item No. 5B (Base Bid).

B. Measurement and Payment: If this item is awarded, measurement and payment shall be consistent with Bid Form Item No. 5B (Base Bid).

1.3 ALTERNATIVE BID FORM ITEM NO. B. 6 – CONCRETE ENCASEMENT

A. Scope of Work: Refer to Section 01 23 00, Alternatives. Scope of Work shall be consistent with Bid Form Item No. 6 (Base Bid).

B. Measurement and Payment: If this item is awarded, measurement and payment shall be consistent with Bid Form Item No. 6.

1.4 ALTERNATIVE BID FORM ITEM NO. B.7 – TEST PIT EXCAVATIONS

A. Scope of Work: Refer to Section 01 23 00, Alternatives. Scope of Work shall be consistent with Bid Form Item No. 7 (Base Bid).

B. Measurement and Payment: If this item is awarded, measurement and payment shall be consistent with Bid Form Item No. 7 (Base Bid).

1.5 ALTERNATIVE BID FORM ITEM NO. B.8 – DRIVEWAY RESTORATION - CONCRETE

include all preparation work, installation of tack coat, and all work for a final installation.

- B. Measurement and Payment: If this item is awarded, measurement of work completed under this Bid Form item shall be the actual number of square feet installed, within the specified pay limits on the Plans, or where directed by the Engineer. Payment under this Bid Form item shall be the square footage installed within the specified pay limits, as measured by the Engineer. ▼

Deleted: Square footage of top course installation installed under Bid Form Item No. B.5A is not eligible for payment under this item.

1.11 ALTERNATIVE BID FORM ITEM NO. B.14 – GRINDER PUMP CONNECTION

- A. Scope of Work: This Bid Form item includes all labor, materials, equipment, processes, products and other items required to install grinder pump force main connections via open cut excavation where indicated on the Plans and per the Details. The work shall include installed of sanitary lateral pipe at any depth, including, but not limited to the following: furnishing and installing 6-inch diameter PVC wye connection, 6-inch diameter lateral pipe from the mainline, forcemain pipe to match existing diameter and type. The work under this unit price bid item shall include shoring and bracing; handling of water and sewage flows, maintenance of existing flows; excavation, removal, and disposal of excavated material; removal and proper disposal of all existing lateral pipe; furnishing and laying pipe and making joints; pipe bedding; coordination with homeowner to facilitate connection; filling authorized excavation with soil or excavated material and compaction; riser pipe; fittings; bends; reducers; or couplings as necessary to reconnect all live laterals to existing competent solid pipe and all other work required for a complete installation.
- B. Measurement and Payment: If this item is awarded, measurement and payment shall be the number of grinder pump force main connections installed and accepted by the Engineer.

PART 2 PRODUCTS

NOT USED

PART 3 EXECUTION

NOT USED

END OF SECTION

ARTICLE 3—BASIS OF BID—LUMP SUM BID AND UNIT PRICES

3.01 Lump Sum Base Bids

- A. Bidder will complete the Work in accordance with the Contract Documents for the following lump sum (stipulated) price(s), together with any Unit Prices indicated in Paragraph 3.02:

Item No. 12 – Maintenance and Protection of Traffic	\$
Item No. 13 – Sanitary Sewer Flow Maintenance	\$
Item No. 14 – Abandonment of Existing Sewer and Manholes	\$
Item No. 15 – Restoration	\$
Item No. 16 – Asbestos Handling and Disposal	\$

- B. The following contingency allowances are included in the price set forth below.

Lump Sum Item 17 – Utility Relocation Allowance	\$20,000.00
Lump Sum Item 18 – Contingency Allowance	\$50,000.00

3.02 Unit Price Base Bids

- A. Bidder will perform the following Work at the indicated unit prices:

Item No.	Description	Unit	Estimated Quantity	Bid Unit Price	Bid Amount
1A	Install/Replace 8" <u>and 10"</u> Dia. PVC SDR 35 Sewer	LF	<u>973</u>		\$
2A	Install/Replace Standard Manhole	VLF	<u>66</u>		\$
2B	Install End of Line 8" Dia. Cleanout	EA	3		\$
3A	Install 8"x 6" PVC SDR 35 Wye	EA	12		\$
3B	Install/Replace 6" Dia. PVC SDR 35 Lateral Pipe	LF	38		\$
4	Select Material Backfill	CY	290		\$
5A	Trench Pavement Restoration	SF	<u>370</u>		\$
5B	Concrete Roadbase Restoration	SF	100		\$
6	Concrete Encasement	CY	<u>40</u>		\$
7	Test Pit Excavations	EA	6		\$
8	Driveway Restoration – Concrete	SF	920		\$
9	Concrete Sidewalk Restoration	SF	2902		\$
10	Concrete Curb Replacement	LF	<u>20</u>		\$
11	Concrete Curb Ramp Replacement	EA	1		\$
Total of All Unit Price Base Bid Items					

00 41 13, Bid Form

This document is a MODIFIED version of EJCDC® C-41, Copyright© 2018 by the National Society of Professional Engineers, American Council of Engineering Companies, and American Society of Civil Engineers, or is based in part on excerpts from copyrighted EJCDC documents. All rights reserved. Those portions of the text that originated in copyrighted EJCDC documents remain subject to the copyright.

B.3D	Install/Replace 6" Dia. PVC C-900 Lateral Pipe	LF	21		\$
B.3E	Install Sanitary Cleanout	EA	17		\$
B.4	Select Material Backfill	CY	440		\$
B.5A	Trench Pavement Restoration <u>(Base and Binder)</u>	SF	5130		\$
B.5B	Concrete Roadbase Restoration	SF	3000		\$
B.6	Concrete Encasement	CY	1		\$
B.7	Test Pit Excavations	EA	4		\$
B.8	Driveway Restoration – Concrete	SF	250		\$
B.9	Concrete Sidewalk Restoration	SF	200		\$
B.10	Concrete Curb Replacement	LF	86		\$
B.11	Concrete Curb Ramp Replacement	EA	1		\$
B.12	Milling	SF	13,300		\$
B.13	Top Course	SF	<u>13,300</u>		\$
B.14	Grinder Pump Connection	EA	1		\$
Total of All Unit Price Alternate B Bid Items					

3.05 *Total Bid Price (Base Bid Lump Sum Prices, Base Bid Unit Prices, Alternate A Lump Sum Prices, Alternate B Lump Sum Prices, Alternate A Unit Prices, Alternate B Unit Prices)*

Total Bid Price (Total of Base Bid, Alternate A Bid, & Alternate B Bid)	\$
--	----

ARTICLE 4—BASIS OF BID—COST-PLUS FEE – NOT USED

ARTICLE 5—PRICE-PLUS-TIME BID - NOT USED

ARTICLE 6—TIME OF COMPLETION

- 6.01 Bidder agrees that the Work will be substantially complete and will be completed and ready for final payment in accordance with Paragraph 15.06 of the General Conditions on or before the dates or within the number of days indicated in the Agreement.
- 6.02 Bidder accepts the provisions of the Agreement as to liquidated and special damages.

00 41 13, Bid Form

This document is a MODIFIED version of EJCDC® C-41, Copyright© 2018 by the National Society of Professional Engineers, American Council of Engineering Companies, and American Society of Civil Engineers, or is based in part on excerpts from copyrighted EJCDC documents. All rights reserved. Those portions of the text that originated in copyrighted EJCDC documents remain subject to the copyright.