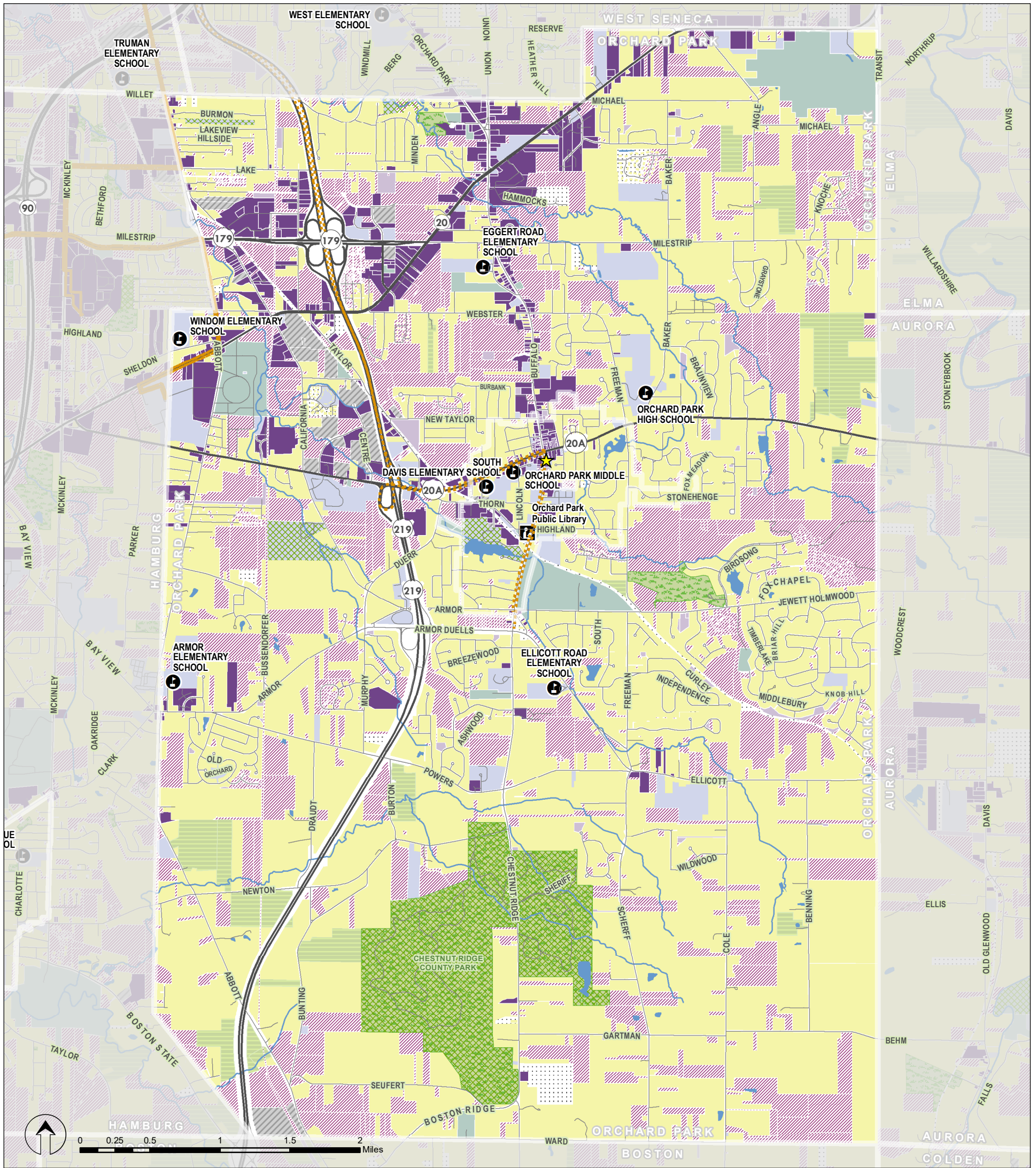


LAND USE MAP & CENSUS DATA SUMMARY TOWN OF ORCHARD PARK, NY



- Municipal Hall
- NFTA Bus Route
- Public School
- Library
- Land Use by Tax Parcel**
- Agriculture
- Commercial
- Community Services
- Industrial
- Public Services
- Recreation & Entertainment
- Residential
- Vacant Land
- Wild & Conservation Land
- Unknown
- Park

Population & Age

2021 Total Population **29,668** Median Age **47.0**

The population was **28,682** in 2010, a **3.4%** change. Median age was **43.1** in 2010.

23.3% are age 65 and over. **21.0%** are age 17 and younger. (16.1% in 2010)

Qualifying Income for Affordable Housing

Affordable housing unit eligibility is based on a household income of **60% or less of area median income (AMI) in Erie County** and household size.

| Household Size | 60% AMI | Household Size | 60% AMI |
|----------------|----------|----------------|----------|
| 1 | \$36,840 | 5 | \$56,880 |
| 2 | \$42,120 | 6 | \$61,080 |
| 3 | \$47,400 | 7 | \$65,280 |
| 4 | \$52,620 | 8 | \$69,480 |

Income & Housing

Median Household Income **\$94,113** Approximately **7.6%** of Residents are living in Poverty.

Total Housing Units in 2021 **12,419** Total Housing Units in 2010 **11,611**

Housing Units Occupied by Renters **19.8%** in 2010 **27.3%** in 2021 Median Gross Rent (2017-2021) **\$1,076**

Cost-Burdened by Housing

Based on 2017-2021 American Community Survey Data, US Census Bureau.

HUD defines housing cost-burdened residents as those "who pay more than **30 percent** of their income for housing" and "may have difficulty affording necessities such as food, clothing, transportation, and medical care."

40.3% of renters spend over 30% of their income on housing. (40.5% in 2010)

17.6% of home owners spend over 30% of their income on housing. (21.2% in 2010)

23.8% of all households spend over 30% of their income on housing. (25.1% in 2010)