

## FRANKLIN GULF PARK

### DESCRIPTION

Franklin Gulf Park is a 631 acre undeveloped park in the Towns of Eden and North Collins. It is primarily a wooded area that has impressive topography and scenic natural features, such as creeks, ravines, waterfalls and ledge outcroppings. The topography is dominated by the “gulf”, a steep gorge which is practically inaccessible. The park landscape lends itself best to passive uses such as hiking and nature enhancement uses.

Franklin Gulf Park is the winner of Buffalo Spree Magazine’s The Best of WNY 2015: Most Beautiful Under-The-Radar Park award.

### LOCAL CONTEXT

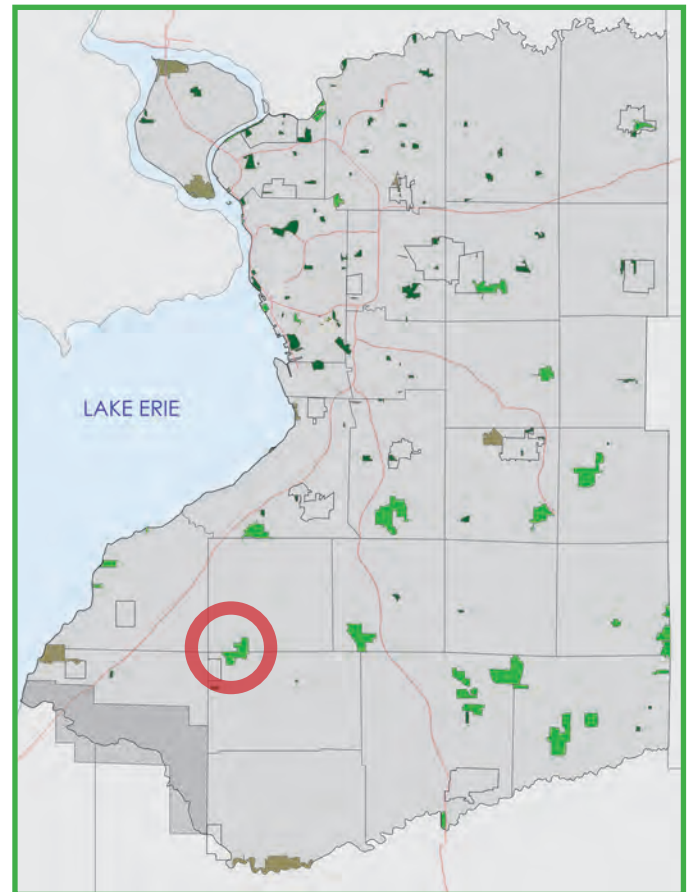
This irregularly-shaped park is generally bound by Sandrock Road to the north, Rogers Road to the east and School Street to the South. Surrounding land uses are largely agricultural, with a scattering of residences throughout. The Village of North Collins is only a short distance to the southwest of the property. An active railroad line crosses the gulf slightly beyond the western edge of the park.

### RECREATIONAL CONTEXT

Outdoor activities include hiking, wildlife viewing, snowshoeing and cross-country skiing (ungroomed trails). A maintained snowmobile trail is located on the western portion of the park.



Local context map



Park Location Map: Franklin Gulf Park is located in the Towns of Eden and Collins.

### PARK SPECIFIC PRIORITIES

- **Routinely inspect and provide upkeep of all trails;**
  - Remove dangerous tree limbs and other potential hazards;
  - Improve drainage and divert water away from trails where necessary.
- **Enhance and expand small informal parking area;** parking area only accommodates a few cars.
- **Implement an invasive species management plan.** Address and remove emerging invasive species.



# MASTER PLAN FRANKLIN GULF PARK

## ERIE COUNTY PARKS MASTER PLAN UPDATE

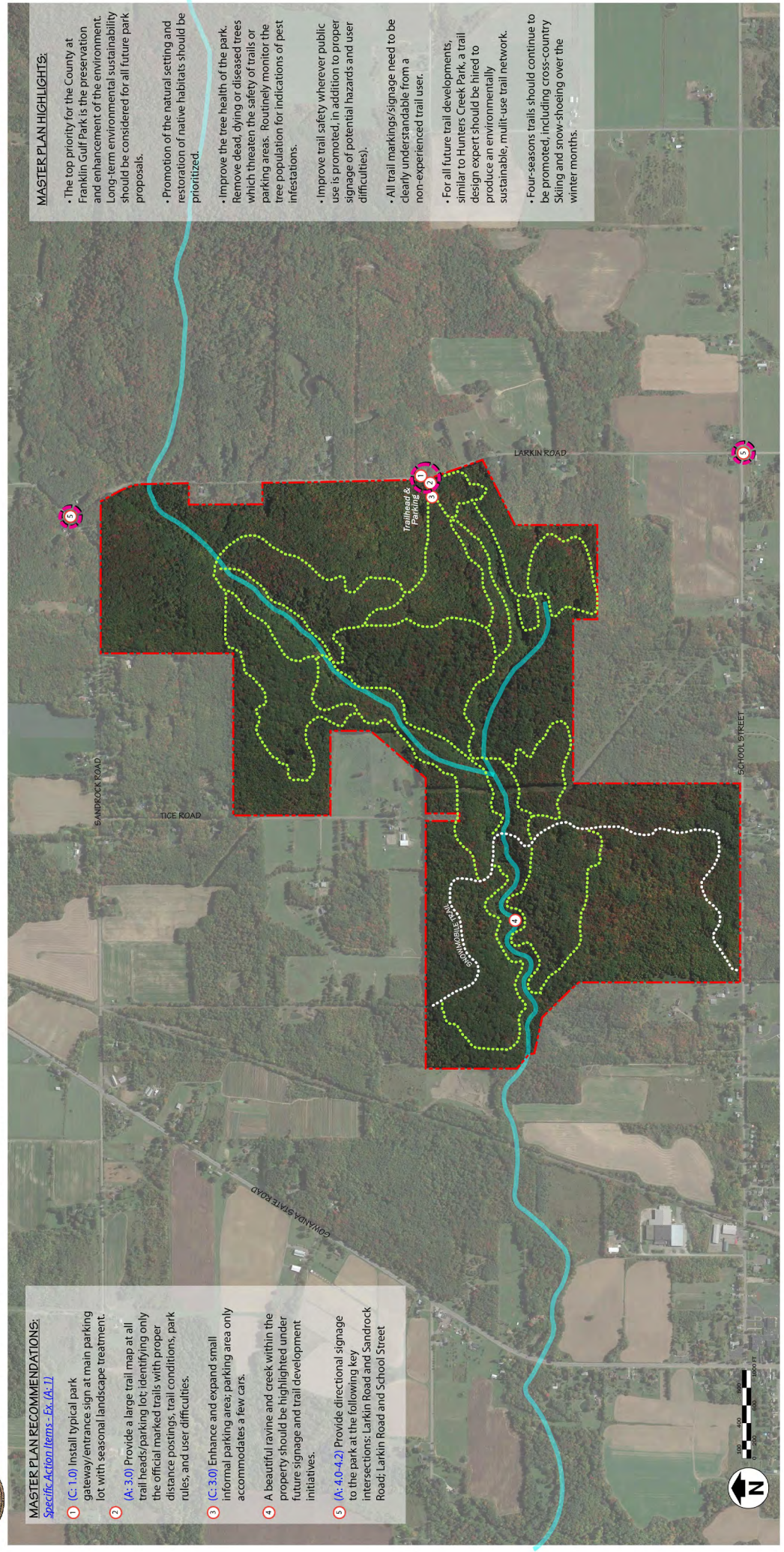
### MASTER PLAN RECOMMENDATIONS:

*Specific Action Items - Ex (A.1)*

- 1 (C: 1.0) Install typical park gateway/entrance sign at main parking lot with seasonal landscape treatment
- 2 (A: 3.0) Provide a large trail map at all trail heads/parking lot; identifying only the official marked trails with proper distance postings, trail conditions, park rules, and user difficulties.
- 3 (C: 3.0) Enhance and expand small informal parking area; parking area only accommodates a few cars.
- 4 A beautiful ravine and creek within the property should be highlighted under future signage and trail development initiatives.
- 5 (A: 4.0-4.2) Provide directional signage to the park at the following key intersections: Larkin Road and Sandrock Road; Larkin Road and School Street

### MASTER PLAN HIGHLIGHTS:

- The top priority for the County at Franklin Gulf Park is the preservation and enhancement of the environment. Long-term environmental sustainability should be considered for all future park proposals.
- Promotion of the natural setting and restoration of native habitats should be prioritized.
- Improve the tree health of the park. Remove dead, dying or diseased trees which threaten the safety of trails or parking areas. Routinely monitor the tree population for indications of pest infestations.
- Improve trail safety wherever public use is promoted, in addition to proper signage of potential hazards and user difficulties).
- All trail markings/signage need to be clearly understandable from a non-experienced trail user.
- For all future trail developments, similar to Hunters Creek Park, a trail design expert should be hired to produce an environmentally sustainable, multi-use trail network.
- Four-seasons trails should continue to be promoted, including cross-country Skiing and snow-shoeing over the winter months.



### Legend:

- Potential Major and Minor Park Gateway Locations
- Park Trails
- Park Boundary
- Destination
- Natural Features



View down the creek

### CURRENT ISSUES AND PROBLEMS

- Does not have typical park gateway signage at park entrance
- Lack of park and trail signage
- No formal trail maps
- Small parking lot cannot accommodate sufficient cars

### MASTER PLAN RECOMMENDATIONS

#### Key - (Project Type: Project Number)

A - Action Item: Completed at low to no cost by Parks Staff

P - Assistance or completion of project by potential partner/user group

C - Capital project

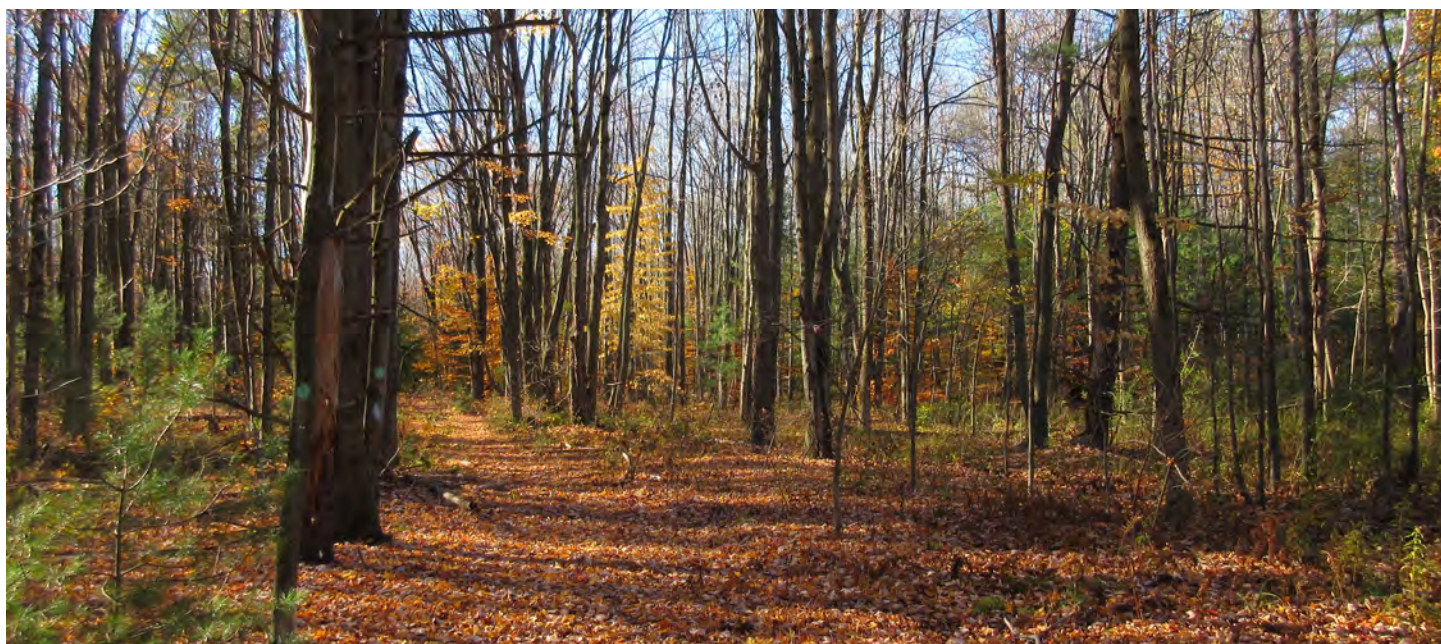
- **The top priority for the County at Franklin Gulf Park is the preservation and enhancement of the environment.** Long-term environmental sustainability should be considered for all future park proposals.
  - Priority: High
  - Partner: NYSDEC/In-House
- **Promotion of the natural setting and restoration of native habitats should be prioritized.**
  - Priority: High
  - Partner: NYSDEC/WNY Prism
- **(A: 1.0) Improve the tree health of the park.**
  - Remove dead, dying or diseased trees which threaten the safety of trails or parking areas.
  - Routinely monitor the tree population for indications of pest infestations.
    - Priority: High
    - Partner: In-House/Forestry

- **(C: 1.0) Install typical park gateway/entrance sign at main parking lot with seasonal landscape treatment.**
  - Priority: High
  - Partner: In-House
- **(C: 3.0) Enhance and expand small informal parking area; parking area only accommodates a few cars.**
  - Provide secondary lot to accommodate 20 cars; Potential location off of School Street at snowmobile trailhead.
    - Priority: High
    - Partner: In-House



Parking area

- **Routinely inspect and provide upkeep of all trails;**
  - Remove dangerous tree limbs and other potential hazards;
  - Improve drainage and divert water away from trails where necessary.
    - **Priority: High**
    - **Partner: WNYMBA/In-House**
- **(P: 1.0) Implement an invasive species management plan.**
  - Address and remove emerging invasive species.
    - **Priority: High**
    - **Partner: WNY Prism**
- **(A: 3.0) Provide a large trail map at all trail heads/ parking lot; identifying only the official marked trails with proper distance postings, trail conditions, park rules, and user difficulties.**
  - Provide interpretive signage along the trails highlighting flora, fauna, and wildlife. Coordinate educational information with Soil and Water District, Cornell Cooperative Extension, and Park Rangers.
    - **Priority: Medium**
    - **Partner: Cornell Cooperative/ECSWD/In-House/Forestry**
- **Improve trail safety wherever public use is promoted, in addition to proper signage of potential hazards and user difficulties).**
  - This may include trail surface material upgrades, drainage improvements, vegetation clearing, railings and barriers, etc.
    - **Priority: Medium**
    - **Partner: In-House**
- **All trail markings/signage need to be clearly understandable from a non-experienced trail user.**
  - **Priority: Medium**
  - **Partner: In-House/Forestry**
- **(A: 4.0-4.2) Provide directional signage to the park at the following key intersections:**
  - Larkin Road and Sandrock Road
  - Larkin Road and School Street
    - **Priority: Low**
    - **Partner: In-House**
- **Highlight beautiful ravine and creek within the property with future signage and trail development initiatives.**
  - **Priority: Low**
  - **Partner: In-House/Forestry**
- **(C: 2.0) Provide interpretive signage in the park.**
  - **Priority: Low**
  - **Partner: In-House**
- **For all future trail developments, similar to Hunters Creek Park, a trail design expert should be hired to produce an environmentally sustainable, multi-use trail network.**
  - **Priority: Low**
  - **Partner: WNYMBA/Forestry**
- **Four-seasons trails should continue to be promoted, including cross-country skiing and snow-shoeing over the winter months. (Note that seasonal trail closures, or temporary closures due to wetness or erosion, will be adhered to for environmental sustainability.)**
  - **Priority: Low**
  - **Partner: In-House**



Trail



## FRANKLIN GULF PARK: ACTION ITEMS

| Project Type | Project # | Recommendation  | Implementation Strategies  | Priority | Term       | Estimated Cost     |
|--------------|-----------|---|--|----------|------------|--------------------|
| A            | 1.0       | Increase tree health and tree canopy throughout the park.   | Prune and/or remove trees if determined to present an increased risk to park patrons and employees.            | High     | Ongoing    | In-House, Forestry |
| A            | 2.0       | Provide welcome sign and rules for the park   | Coordination between Parks and Highways to develop and produce the sign panels                                 | High     | Ongoing    | In-House, Forestry |
| C            | 3.0       | Enhance and expand small informal parking area  | Engage a consultant to develop plans and a contractor to construct the improvements                            | High     | 3-5 Years  | In-House           |
| P            | 1.0       | Implement an invasive species management plan   | Potential partnership with WNYPRISM to develop volunteer opportunities   | High     | Ongoing    | In-House           |
| A            | 3.0       | Provide consistent wayfinding and directional signage within the park, including large trail maps at all trailheads | Coordination between Parks and Highways to develop and produce directional sign panels, trail maps and markers | Medium   | 3-5 Years  | In-House           |
| A            | 4.0       | Provide directional signage to the park at the following key locations:   | Coordination between Parks and Highways to develop and produce the sign panels                                 | Low      | 6-10 Years | X                  |
| A            | 4.1       | Larkin Road and Sandrock Road   | Coordination between Parks and Highways to develop and produce the sign panels                                 | Low      | 6-10 Years | In-House, Highway  |
| A            | 4.2       | Larkin Road and School Street   | Coordination between Parks and Highways to develop and produce the sign panels                                 | Low      | 6-10 Years | In-House, Highway  |
| C            | 1.0       | Establish gateway signage for the park  | Engage a consultant to develop sign types including copy, structure and landscape.                             | Low      | 6-10 Years | \$17,800           |
| C            | 2.0       | Provide interpretive signage in the park  | Engage a consultant to develop high resolution graphics and produce sign panels                                | Low      | 6-10 Years | \$3,500            |

## KEY:

A: Action Item: Completed at low to no cost by Parks staff

C: Capital Project

P: Assistance or completion of project by potential partner/user group

POB: Parks Operating Budget