

## SCOBY DAM PARK

### DESCRIPTION

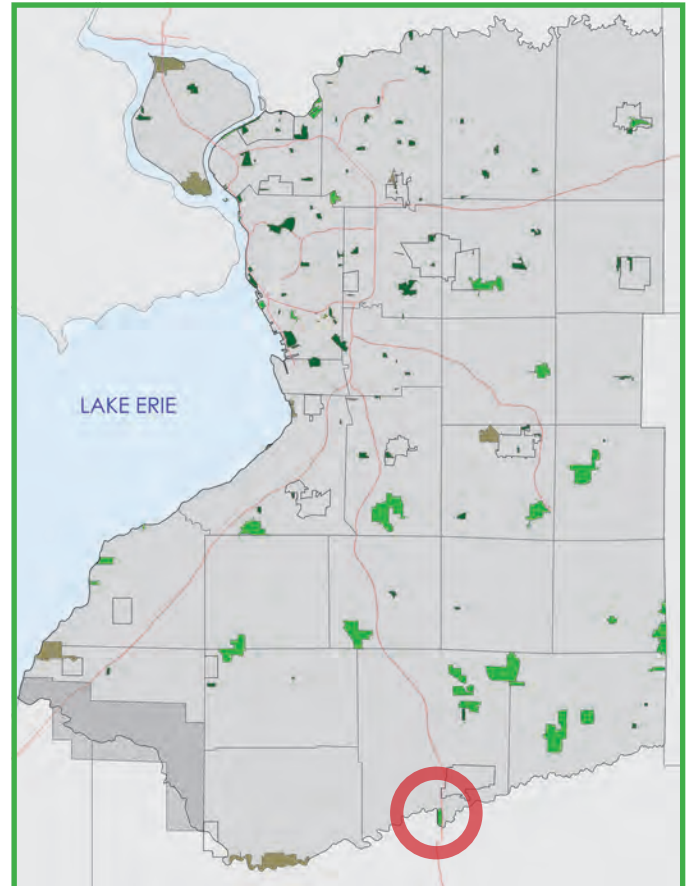
Scoby Dam Park is a linear strip of land along Cattaraugus Creek and is a mecca for fishing. The passive park takes advantage of its superb siting on the Creek, including fishing, informal kayak access, hiking and the beautiful scenery at the southern end of Erie County.

Scoby Hill Dam is the site of a small turn-of-the-century hydroelectric generating facility on Cattaraugus Creek, and at one time generated a small percentage of the Village of Springville's electricity. The dam was constructed in 1924 and is 30-feet high. The existing building is in very good condition, it and the Dam are listed on the National Register of Historic Places. The site affords scenic views of the creek and dam.

Currently, Scoby Hill Road ends at Cattaraugus Creek near the dam. The bridge, which formerly carried Scoby Hill Road across Cattaraugus Creek, was removed after the 1998 summer flooding and there are no plans to rebuild it. The creek bank suffered a great deal of erosion in the June 1998 storm.

The Army Corps of Engineers is currently developing a plan to open the access upstream to various fish populations that will make this area a primary fishing destination in Erie County.

A rest stop along Cascade Road is maintained by the County. It contains a small picnic shelter and a large area of maintained turf.



*Park Location Map: Scoby Dam Park is the southern most park in the County System, located in the Town of Concord on the border of Cattaraugus County*



*Scoby Dam*

### PARK SPECIFIC PRIORITIES

- **Manage and monitor invasive species within the park.**
- **Preserve the beautiful stand of large trees along the bank of the Creek; infill with new tree plantings to assure a long-term sustainability and beauty.**
- **Promote this County park as a prime fishing site along the scenic Cattaraugus Creek.**
- **Provide improved access to the edge of the creek, as well as possible accessible fishing platforms.**



**LOCAL CONTEXT**

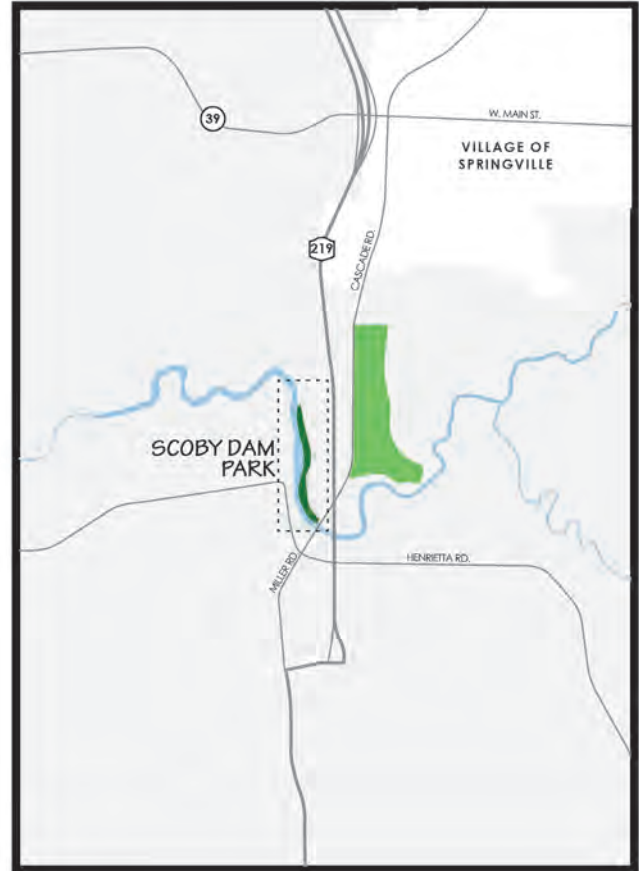
This site is at the far southern end of Erie County along the border with Cattaraugus County. Access to this relatively remote site is from Scoby Hill Road just downhill from Route 219 before crossing the Cattaraugus Creek Bridge heading south. Only a few residences are nearby along Scoby Hill Road in this mostly rural location.

**RECREATIONAL CONTEXT**

The primary recreational use for the park is for fishing, picnicking, and kayaks. Casual walk and hiking along the trail is also a popular activity at the park.

**RECENT PARK IMPROVEMENTS**

Approval of restoration project of dam between U.S Army Corps of Engineers, DEC, and Erie County. Dam would be lowered by 25 feet, with installation of a fish ladder and series of pools to allow fish to bypass the dam.



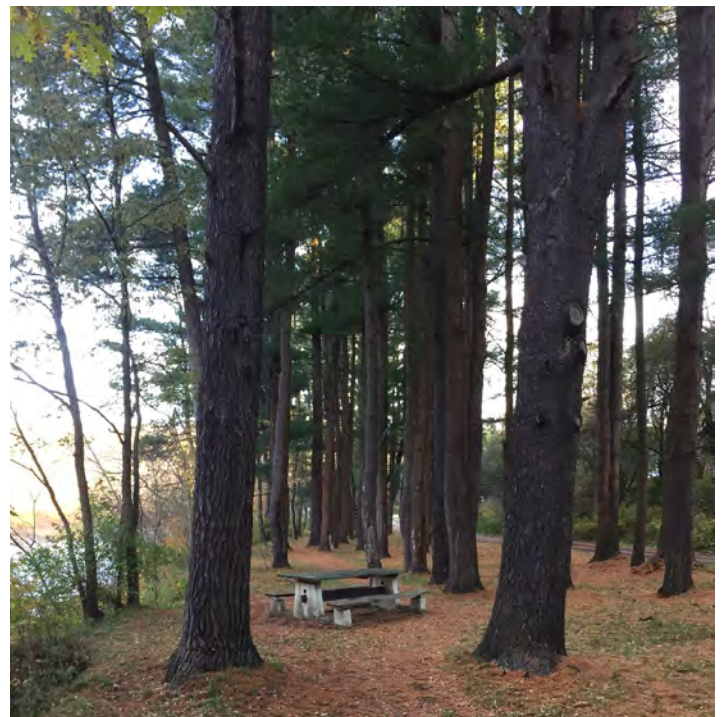
Local context map



Access to the Creek



Access road parallels the park



Large stand of Hemlock Trees

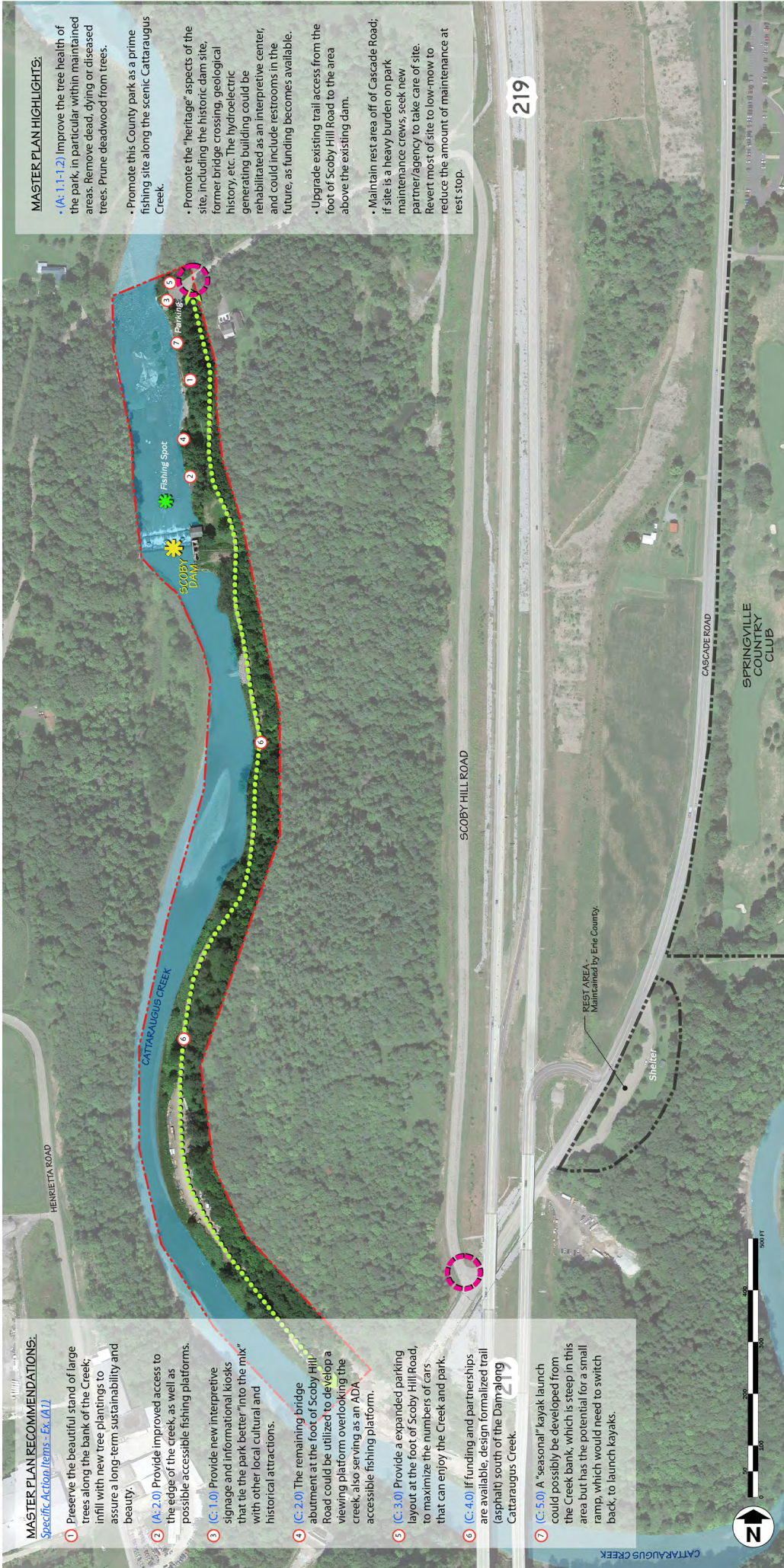






# MASTER PLAN SCOBY DAM PARK

# ERIE COUNTY PARKS MASTER PLAN UPDATE



**MASTER PLAN RECOMMENDATIONS:**  
*Specific Action Items - Ex. A11*

- 1 Preserve the beautiful stand of large trees along the bank of the Creek and infill with new tree plantings to assure a long-term sustainability and beauty.
- 2 (A-2.0) Provide improved access to the edge of the creek, as well as possible accessible fishing platforms.
- 3 (C-1.0) Provide new interpretive signage and informational kiosks that tie the park better "into the mix" with other local cultural and historical attractions.
- 4 (C-2.0) The remaining bridge abutment at the foot of Scoby Hill Road could be utilized to develop a viewing platform overlooking the creek, also serving as an ADA accessible fishing platform.
- 5 (C-3.0) Provide an expanded parking layout at the foot of Scoby Hill Road, to maximize the numbers of cars that can enjoy the Creek and park.
- 6 (C-4.0) If funding and partnerships are available, design formalized trail (asphalt) south of the Dam along Cattaraugus Creek.
- 7 (C-5.0) A "seasonal" kayak launch could possibly be developed from the Creek bank, which is steep in this area but has the potential for a small ramp, which would need to switch back, to launch kayaks.

- MASTER PLAN HIGHLIGHTS:**
- (A-1.1-1-2) Improve the tree health of the park, in particular within maintained areas. Remove dead, dying or diseased trees. Prune deadwood from trees.
  - Promote this County park as a prime fishing site along the scenic Cattaraugus Creek.
  - Promote the "heritage" aspects of the site, including the historic dam site, former bridge crossing, geological history, etc. The hydroelectric generating building could be rehabilitated as an interpretive center, and could include restrooms in the future, as funding becomes available.
  - Upgrade existing trail access from the foot of Scoby Hill Road to the area above the existing dam.
  - Maintain rest area off of Cascade Road; if site is a heavy burden on park maintenance crews, seek new partner/agency to take care of site. Revert most of site to low-mow to reduce the amount of maintenance at rest stop.

**Legend:**

- Potential Major and Minor Park Gateway Locations
- Existing Trails
- Park Boundary
- Destination
- Natural Features





A view down Cattaraugus Creek towards the dam

## CURRENT ISSUES AND PROBLEMS

- Directional and interpretive signage is lacking for this County facility
- No formalized fishing areas are currently available.
- Erosion has done much damage to the Creek bank.
- Safety barriers or landscape buffers are lacking to the more dangerous spots along the creek.
- Only 2 picnic tables at the park.
- Park boundaries are unclear
- Minimal parking available

## MASTER PLAN RECOMMENDATIONS

### Key - (Project Type: Project Number)

A - Action Item: Completed at low to no cost by Parks Staff

P - Assistance or completion of project by potential partner/user group

C - Capital project

- **(A: 1.1-1.2) Improve the tree health of the park, in particular within maintained areas.**
  - Remove dead, dying or diseased trees.
  - Prune deadwood from trees.
  - Routinely monitor the tree population for indications of pest infestations.
  - Provide new tree plantings throughout the park, particularly along the roadway edges.
  - Develop a multi-pronged approach to tree planting strategy including contracted work, in-house staff and volunteer group plantings.
  - Develop annual tree planting program to restore tree canopy and improve natural image of the park.
  - Apply for funding from NYSDEC and Erie County Soil and Water District for example for purchase of trees and materials and for the tree inventory.
    - Priority: High
    - Partner: In-House/Forestry
- **(P: 13.0) Manage and monitor invasive species within the park.**
  - Priority: High
  - Partner: WNY Prism/ECSWD



- **Preserve the beautiful stand of large trees along the bank of the Creek; infill with new tree plantings to assure a long-term sustainability and beauty.**
  - Priority: Medium
  - Partner: In-House/Forestry
  
- **(P: 1.0) Improve the health of Cattaraugus Creek.**
  - Focus projects should include bank stabilization and erosion control, habitat conservation and restoration, stormwater management, and contaminant reduction.
  - Continued improvements to the ecological status of the river/creek can contribute to educational nature programs and trail/water recreation.
    - Priority: Medium
    - Partner: Buffalo Niagara Waterkeeper, NYSDEC, ECSWD
  
- **(A: 2.0) Provide improved access to the edge of the creek, as well as possible accessible fishing platforms.**
  - Priority: Medium
  - Partner: NYSDEC/In-House
  
- **Promote this County park as a prime fishing site along the scenic Cattaraugus Creek.**
  - Priority: Low
  - Partner: In-House/VBN
  
- **Promote the “heritage” aspects of the site, including the historic dam site, former bridge crossing, geological history, etc.**
  - The hydroelectric generating building could be rehabilitated as an interpretive center, and could include restrooms in the future, as funding becomes available.
    - Priority: Low
    - Partner: In-House
  
- **(C: 1.0) Provide new interpretive signage and informational kiosks that tie the park better “into the mix” with other local cultural and historical attractions.**
  - Provide an interpretive “story-line” for the Park’s geological and local history, i.e. How and when the gorge was formed?; When was the area first settled?; What’s the history behind the Scoby Dam? What were some significant historic happenings in the area, or in the park?; What fish species are found in Cattaraugus Creek?; etc.
  - Provide interpretive signs or markers at key historic and natural sites, such as at the Dam, old generating building, former bridge site, etc.
    - Priority: Low
    - Partner: In-House



*View of the dam from the parking area*



*Cattaraugus Creek*



- **(C: 2.0)** The remaining bridge abutment at the foot of Scoby Hill Road could be utilized to develop a viewing platform overlooking the creek, also serving as an ADA accessible fishing platform.
  - Priority: Low
  - Partner: Consultant/Contractor
- **(C: 3.0)** Provide an expanded parking layout at the foot of Scoby Hill Road, to maximize the numbers of cars that can enjoy the Creek and park.
  - Priority: Low
  - Partner: In-House
- Upgrade existing trail access from the foot of Scoby Hill Road to the area above the existing dam; provide signage and trail markers.
  - Priority: Low
  - Partner: In-House
- **(C: 4.0)** If funding and partnerships are available, design formalized trail (asphalt) south of the Dam along Cattaraugus Creek. Include additional access points to the creek for fishing and to capitalize on views of the scenic area.
  - Priority: Low
  - Partner: Consultant/Contractor
- **(C: 5.0)** A “seasonal” kayak launch could possibly be developed from the Creek bank, which is steep in this area but has the potential for a small ramp, which would need to switch back, to launch kayaks. Given the shallow depth of water over much of the year in the Creek, it is likely that spring high-water season is the likely use period for this park feature.
  - Priority: Low
  - Partner: NYSDEC/In-House/Stakeholder group
- **Encourage and emphasize natural features and opportunities to connect with park ecology.**
  - Prioritize protection and enhancement of sensitive ecological areas;
  - Propose appropriate additional native plantings throughout the park;
  - Prioritize plantings for bird and butterfly habitats
    - Priority: Medium
    - Partner: NYSDEC/Cornell Cooperative Extension/ECSWD/In-House
- **Maintain rest area off of Cascade Road;** if site is a heavy burden on park maintenance crews, seek new partner/agency to take care of site.
  - Revert most of site to low-mow to reduce the amount of maintenance at rest stop.
    - Priority: Low
    - Partner: In-House



Water flowing down Cattaraugus Creek

## SCOBY DAM PARK: ACTION ITEMS

Project Type	Project #	Recommendation	Implementation Strategies	Priority	Term	Estimated Cost
A	1.1	Increase tree health and tree canopy throughout the park. The overall age of the tree population at the Park is considered to be mature, with limited young trees to renew the resource over time. Develop a multi-pronged tree planting strategy including contracted work, in-house staff and volunteer group plantings	Prune and/or remove trees if determined to present an increased risk to park patrons and employees.	High	Ongoing	In-House, Forestry
P	2.0	Management and monitoring of invasive species is imperative to the health of the park.	Coordinate with WNY Prism, ECSWD, and others.	High	Ongoing	Partner
A	1.2	Increase tree health and tree canopy throughout the park. The overall age of the tree population at the Park is considered to be mature, with limited young trees to renew the resource over time. Develop a multi-pronged tree planting strategy including contracted work, in-house staff and volunteer group plantings	Develop an annual tree planting program.	Medium	Ongoing	P.O.B.
P	1.0	Improve the health of Cattaraugus Creek	Focus projects should include bank stabilization and erosion control, habitat conservation and restoration, stormwater management, and contaminant reduction.	Medium	Ongoing	Waterkeeper, NYSDEC, ECSWD
A	2.0	Provide improved access to the edge of the creek, as well as possible accessible fishing platforms.	Parks staff and partnership support, such as the NYSDEC	Medium	1-2 Years	\$15,000
C	1.0	Provide interpretive signage in the park	Coordinate with historical society to develop copy and obtain images for the interpretive content. Engage a consultant to develop high resolution graphics and produce sign panels, installation In-House	Low	6-10 Years	\$7,000

**KEY:**

A: Action Item: Completed at low to no cost by Parks staff

P: Assistance or completion of project by potential partner/user group

C: Capital Project

POB: Parks Operating Budget



**SCOBY DAM PARK: ACTION ITEMS**

Project Type	Project #	Recommendation	Implementation Strategies	Priority	Term	Estimated Cost
C	2.0	The remaining bridge abutment at the foot of Scoby Hill Road could be utilized to develop a viewing platform overlooking the creek, also serving as an ADA accessible fishing platform.	Engage a consultant to develop plans and a contractor to construct the improvements	Low	6-10 Years	\$20,000
C	3.0	Provide a expanded parking layout at the foot of Scoby Hill Road, to maximize the numbers of cars that can enjoy the Creek and park.	Engage a consultant to develop plans and a contractor to construct the improvements	Low	6-10 Years	\$25,500 - DPW
C	4.0	If funding and partnerships are available, design formalized trail (asphalt) south of the Dam along Cattaraugus Creek.	Engage a consultant to develop plans and a contractor to construct the improvements	Low	6-10 Years	\$100,000
C	5.0	A “seasonal” kayak launch could possibly be developed from the Creek bank, which is steep in this area but has the potential for a small ramp, which would need to switch back, to launch kayaks.	Engage a consultant to develop plans and a contractor to construct the improvements	Low	6-10 Years	\$18,000



Entrance sign

