

BRANT, NY

LAND USE MAP & CENSUS DATA SUMMARY

Population & Age

2021 Total Population **2,155** Median Age **50.3**

The population was **2,014** in 2010, a **7.0%** change. Median age was **43.2** in 2010.

19.9% are age 65 and over. **17.6%** are age 17 and younger. (17.1% in 2010)

Income & Housing

Median Household Income **\$54,868** Approximately **16.4%** of Residents are living in Poverty.

Total Housing Units in 2021 **1,059** Total Housing Units in 2010 **938**

Housing Units Occupied by Renters **16.2%** in 2010 **22.7%** in 2021 Median Gross Rent (2017-2021) **\$924**

Cost-Burdened by Housing

Based on 2017-2021 American Community Survey Data, US Census Bureau.

HUD defines housing cost-burdened residents as those "who pay more than **30 percent** of their income for housing" and "may have difficulty affording necessities such as food, clothing, transportation, and medical care." **52.0%** of renters spend over 30% of their income on housing. 20.2% in 2010

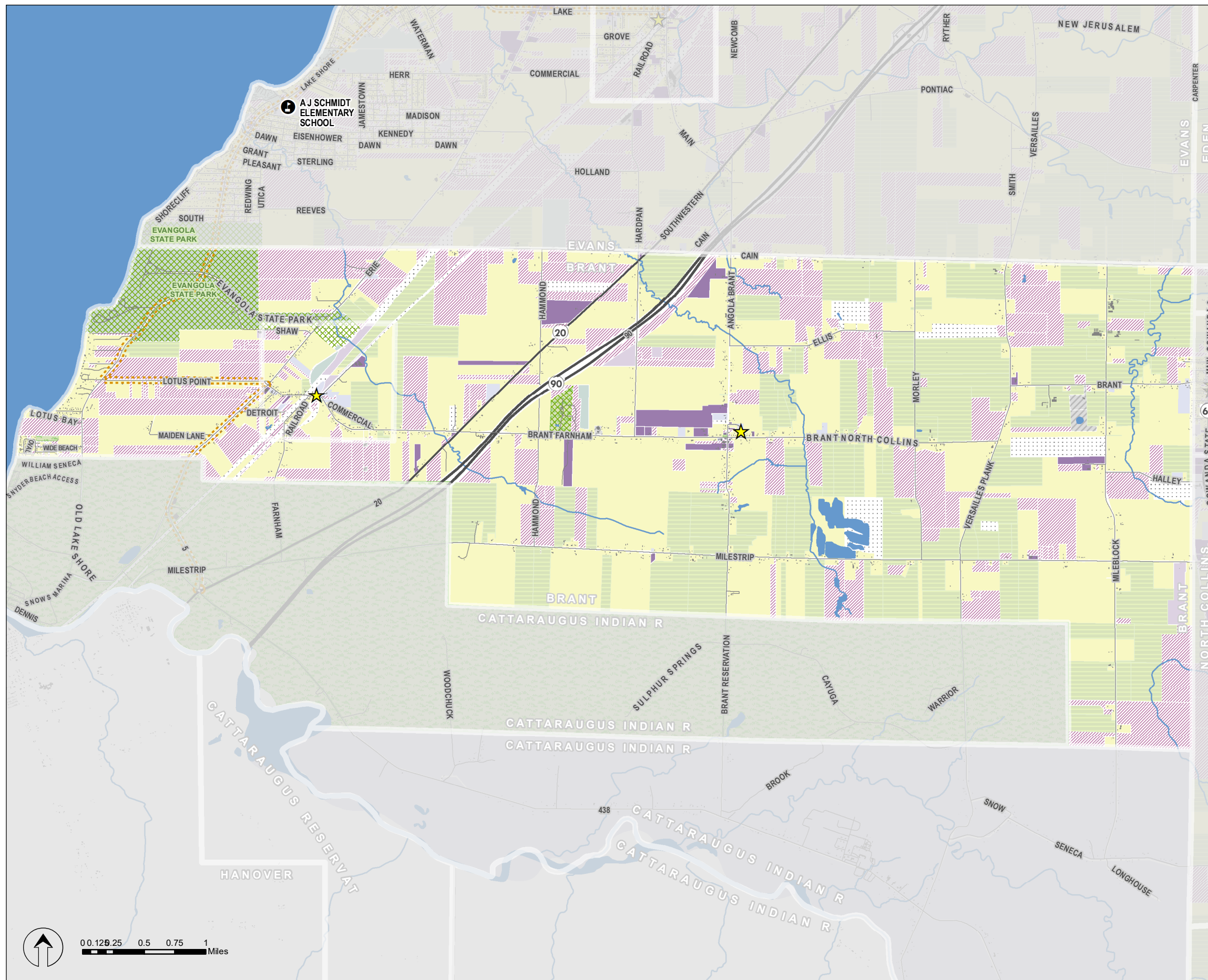
15.9% of home owners spend over 30% of their income on housing. 23.3% in 2010

24.1% of all households spend over 30% of their income on housing. 22.8% in 2010

Qualifying Income for Affordable Housing

Affordable housing unit eligibility is based on a household income of **60% or less of area median income (AMI)** in Erie County and household size.

Household Size	60% AMI	Household Size	60% AMI
1	\$36,840	5	\$56,880
2	\$42,120	6	\$61,080
3	\$47,400	7	\$65,280
4	\$52,620	8	\$69,480



NFTA BUS ROUTES CURRENT TO SPRING, 2023. LAND USE BASED ON NYS REAL PROPERTY CLASS CODES & ERIE COUNTY TAX PARCELS, 2021. CENSUS DATA BASED ON AMERICAN COMMUNITY SURVEY (ACS) 2022 5-YEAR DATASETS UNLESS NOTED. PREPARED BY ERIE COUNTY OFFICE OF GIS WITH LIVEWELL ERIE, AUGUST, 2023.

- Public School
- Municipal Hall
- NFTA Bus Route (Spring 2023)
- Agriculture
- Commercial
- Community Services
- Industrial
- Public Services
- Recreation and Entertainment
- Residential
- Vacant Land
- Wild and Conservation Land
- Unknown
- Park

