

EVANS, NY

LAND USE MAP & CENSUS DATA SUMMARY

Population & Age

2021 Total Population **15,414** Median Age **44.4**

The population was **16,517** in 2010, a **-6.7%** change. Median age was **42.8** in 2010.

20.2% are age 65 and over. **18.0%** are age 17 and younger. (14.8% in 2010)

Income & Housing

Median Household Income **\$62,645** Approximately **13.5%** of Residents are living in Poverty.

Total Housing Units in 2021 **7,530** Total Housing Units in 2010 **7,455**

Housing Units Occupied by Renters **17.1%** in 2010 **17.3%** in 2021 Median Gross Rent (2017-2021) **\$859**

Cost-Burdened by Housing

Based on 2017-2021 American Community Survey Data, US Census Bureau.

HUD defines housing cost-burdened residents as those "who pay more than 30 percent of their income for housing" and "may have difficulty affording necessities such as food, clothing, transportation, and medical care."

38.2% of renters spend over 30% of their income on housing. 59.2% in 2010

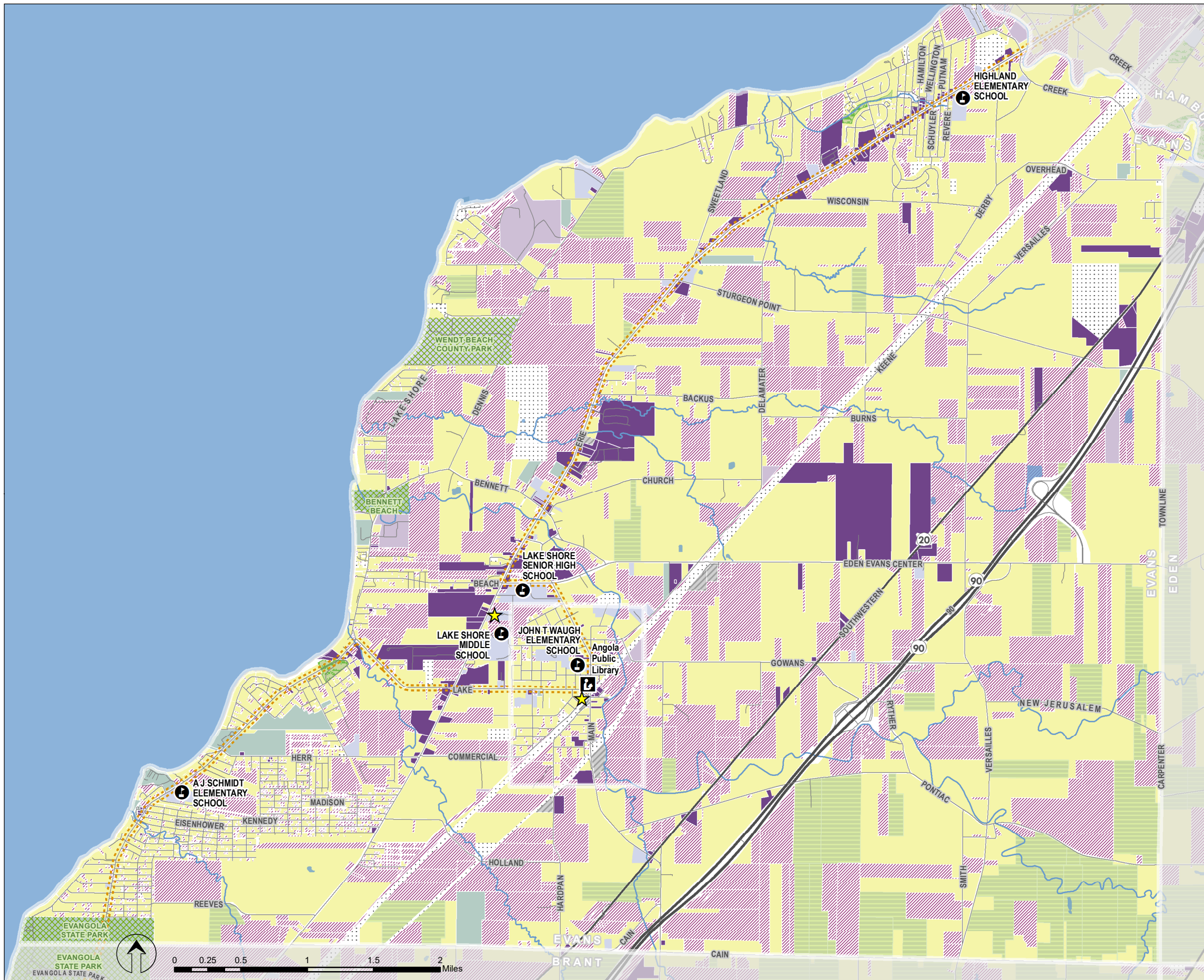
18.5% of home owners spend over 30% of their income on housing. 29.6% in 2010

21.9% of all households spend over 30% of their income on housing. 34.6% in 2010

Qualifying Income for Affordable Housing

Affordable housing unit eligibility is based on a household income of **60% or less of area median income (AMI) in Erie County** and household size.

Household Size	60% AMI	Household Size	60% AMI
1	\$36,840	5	\$56,880
2	\$42,120	6	\$61,080
3	\$47,400	7	\$65,280
4	\$52,620	8	\$69,480



LiveWell Erie

NFTA BUS ROUTES CURRENT TO SPRING, 2023. LAND USE BASED ON NYS REAL PROPERTY CLASS CODES & ERIE COUNTY TAX PARCELS, 2021. CENSUS DATA BASED ON AMERICAN COMMUNITY SURVEY (ACS) 2022 5-YEAR DATASETS UNLESS NOTED. PREPARED BY ERIE COUNTY OFFICE OF GIS WITH LIVEWELL ERIE, AUGUST, 2023.

- ★ Municipal Hall
- Ⓢ Public School
- 📖 Library
- ⋯ NFTA Bus Route

Land Use by Tax Parcel

- 🌱 Agriculture
- 🏢 Commercial
- 🏠 Community Services
- 🏭 Industrial
- 🏛️ Public Services
- 🎡 Recreation and Entertainment
- 🏡 Residential
- 🏠 Vacant Land
- 🌳 Wild and Conservation Land
- 🌳 Park
- 🔍 Unknown