

HAMBURG, NY

LAND USE MAP & CENSUS DATA SUMMARY

Population & Age

2021 Total Population **59,764** Median Age **45.5**

The population was **56,587** in 2010, a **5.6%** change. Median age was **41.7** in 2010.

24.0% are age 65 and over. **20.2%** are age 17 and younger. (15.2% in 2010)

Income & Housing

Median Household Income **\$71,403** Approximately **6.2%** of Residents are living in Poverty.

Total Housing Units in 2021 **26,977** Total Housing Units in 2010 **24,261**

Housing Units Occupied by Renters **23.5%** in 2010 **26.7%** in 2021 Median Gross Rent (2017-2021) **\$917**

Cost-Burdened by Housing

Based on 2017-2021 American Community Survey Data, US Census Bureau.

HUD defines housing cost-burdened residents as those "who pay more than **30 percent** of their income for housing" and "may have difficulty affording necessities such as food, clothing, transportation, and medical care."
42.8% of renters spend over 30% of their income on housing. (42.6% in 2010)

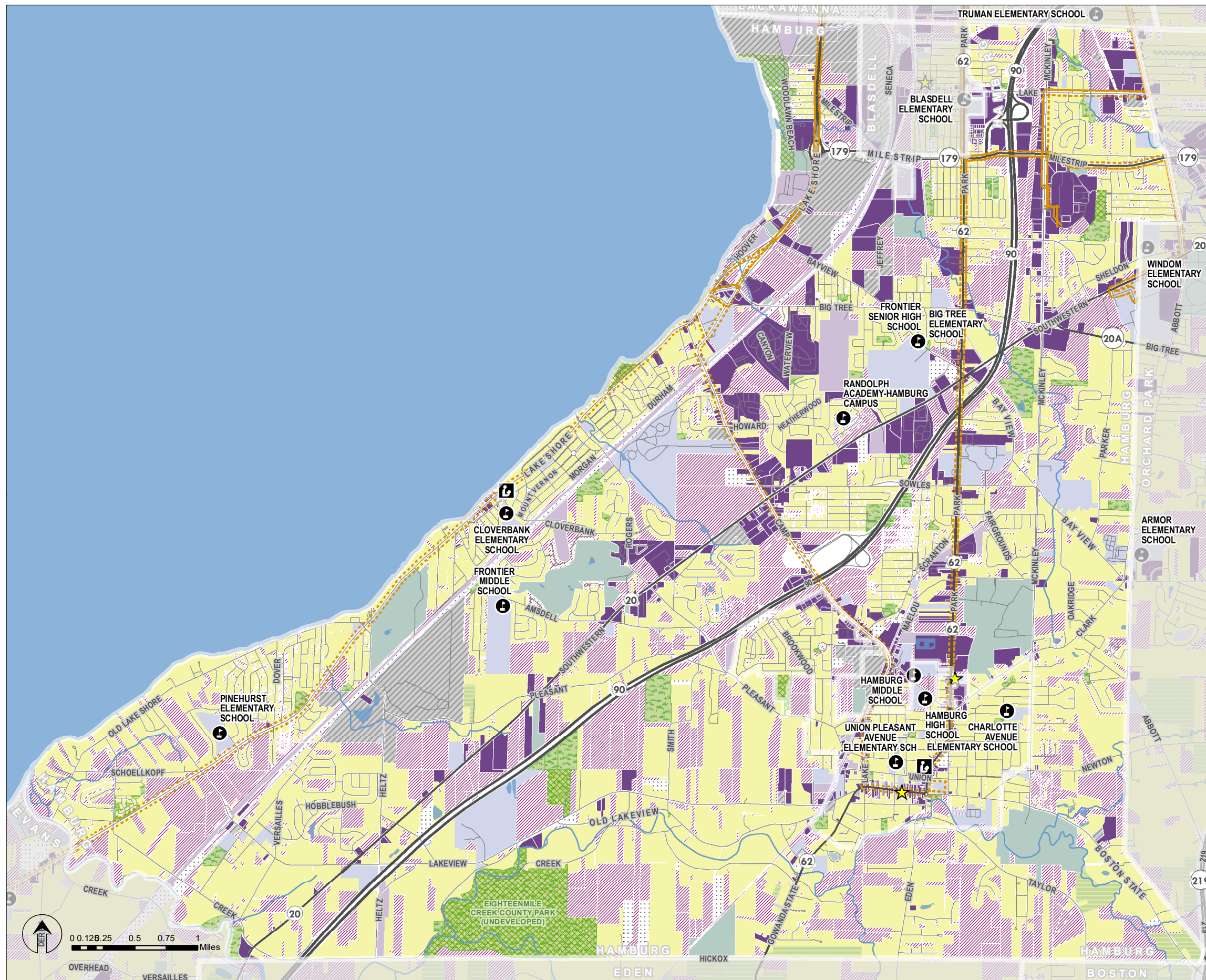
15.8% of home owners spend over 30% of their income on housing. (21.8% in 2010)

23.0% of all households spend over 30% of their income on housing. (26.7% in 2010)

Qualifying Income for Affordable Housing

Affordable housing unit eligibility is based on a household income of **60% or less of area median income (AMI)** in Erie County and household size.

Household Size	60% AMI	Household Size	60% AMI
1	\$36,840	5	\$56,880
2	\$42,120	6	\$61,080
3	\$47,400	7	\$65,280
4	\$52,620	8	\$69,480



- ★ Municipal Hall
- Land Use by Tax Parcel
- Community Services
- Recreation and Entertainment
- Wild and Conservation Land
- Public School
- Agriculture
- Industrial
- Residential
- Unknown
- Library
- Commercial
- Public Services
- Vacant Land
- Park
- - - - - NFTA Bus Route (Spring 2023)

NFTA BUS ROUTES CURRENT TO SPRING, 2023.
 LAND USE BASED ON NYS REAL PROPERTY CLASS CODES & ERIE COUNTY TAX PARCELS, 2021.
 CENSUS DATA BASED ON AMERICAN COMMUNITY SURVEY (ACS) 2022 5-YEAR DATASETS UNLESS NOTED.
 PREPARED BY ERIE COUNTY OFFICE OF GIS WITH LIVEWELL ERIE, AUGUST, 2023.

