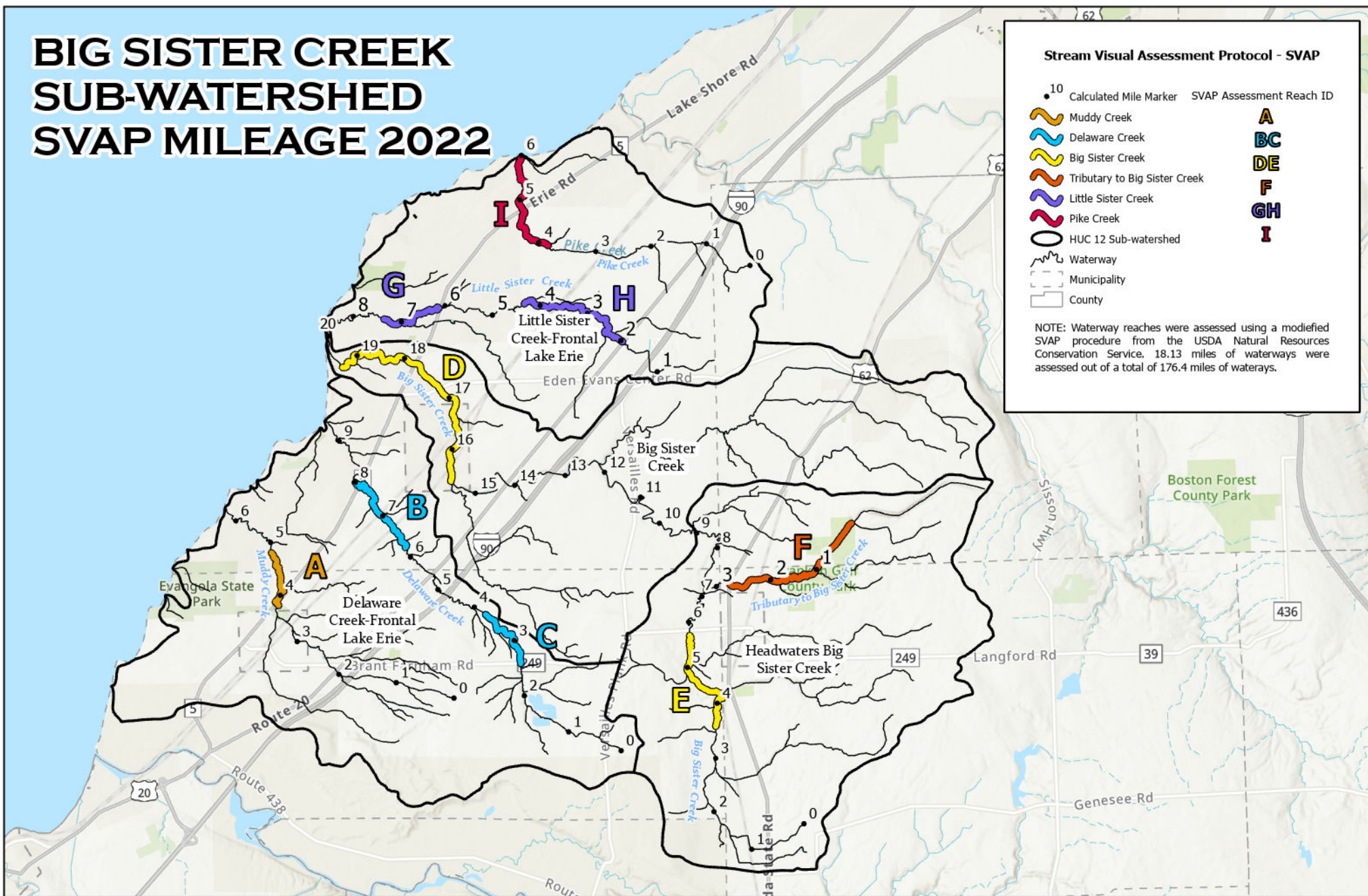


BIG SISTER CREEK SUB-WATERSHED SVAP MILEAGE 2022



Department
of State

This map was prepared with funding
provided by the New York State
Department of State under Title 11 of the
Environmental Protection Fund.

Esri, NASA, NGA, USGS/Esri, Airbus DS, N Robinson,
NCEAS, NLS, OS, NMA, Geodata styrelsen,
Rijkswaterstaat, GSA, Geoland, FEMA, Intermap and the
GIS user community



0 0.75 1.5 3 Miles

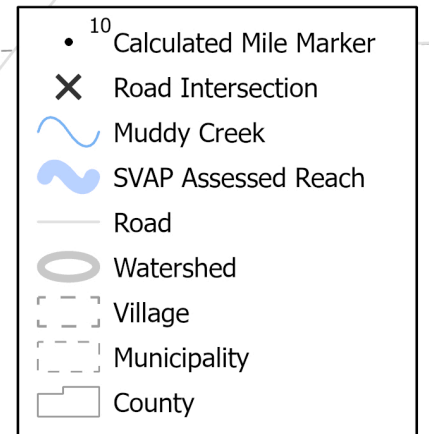
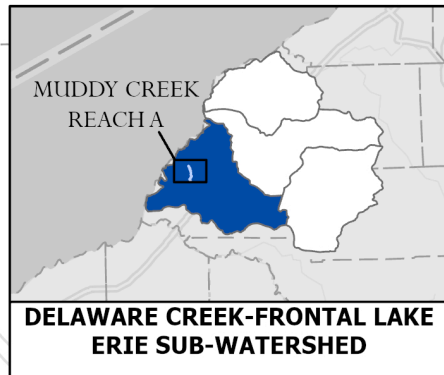


MUDDY CREEK

STREAM VISUAL ASSESSMENT PROTOCOL (SVAP) RESULTS FOR REACH A

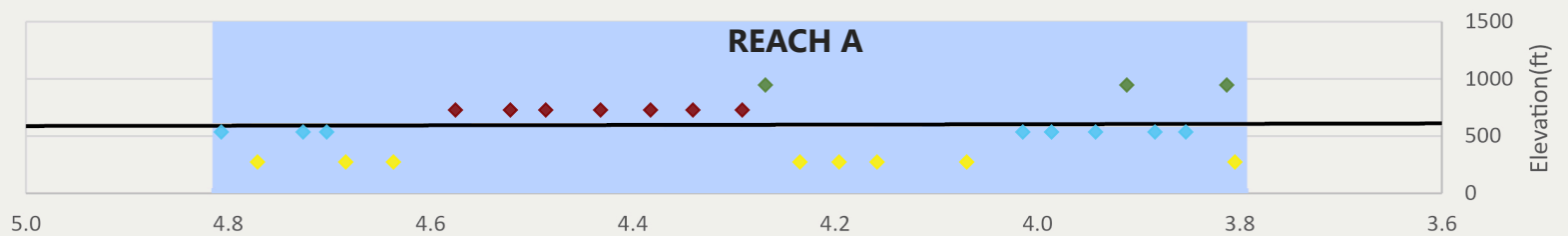
AVERAGE OVERALL SVAP RATING: **5.0**

REACH A



Elevation Profile

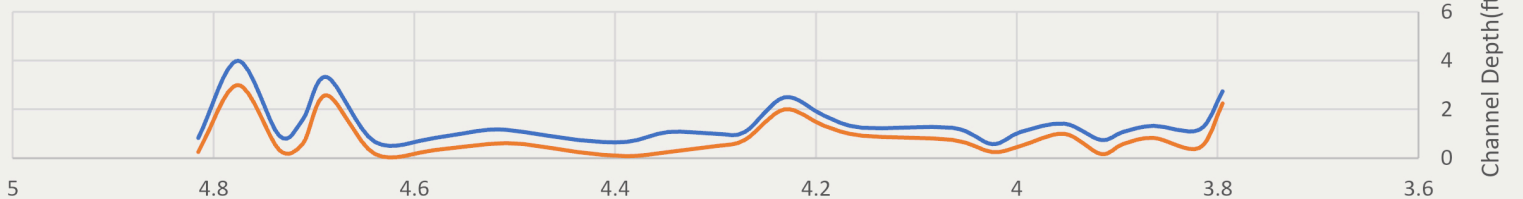
Substrate: ◆ Cobble ◆ Gravel ◆ Sand ◆ Silt/Clay



Channel Depth

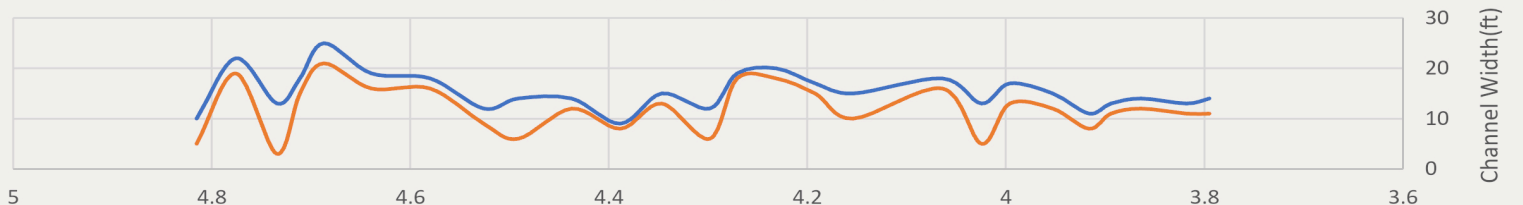
REACH A

— Bankfull — Lowflow



Channel Width

— Bankfull — Lowflow



← FLOW DIRECTION Creek Mile: Reach A (4.81 at Tailwater, 3.79 at Headwater) FLOW DIRECTION →

Classification Scheme for SVAP Parameters

Color Classification				
SVAP Score (0-10)	0 - 2.5	2.6 - 5	5.1 - 7.5	7.6 - 10

REACH A

Channel Conditions

Score ■ Excellent ■ Good ■ Poor



Stream Bank Hardening

■ NO ■ YES



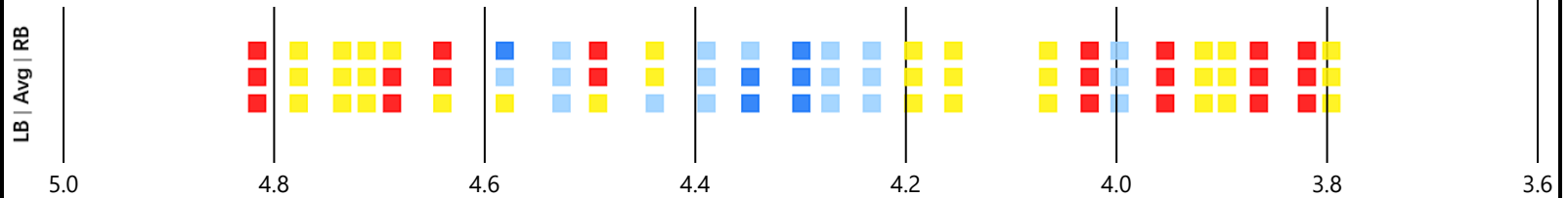
Aggradation/Incision

■ Aggradation ▲ Incision



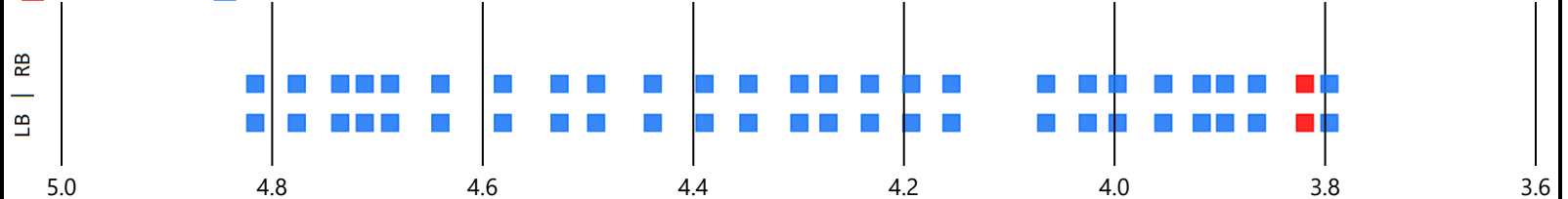
Bank Stability

Score ■ Excellent ■ Good ■ Mediocre ■ Poor



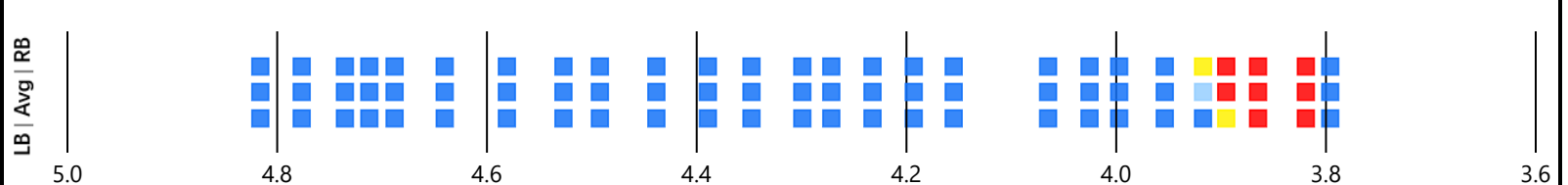
Bank Condition

■ Hardened Structure ■ Natural



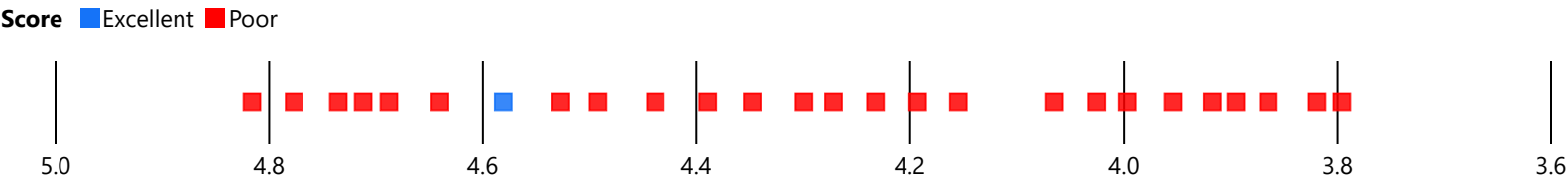
Riparian Zone

Score ■ Excellent ■ Good ■ Poor

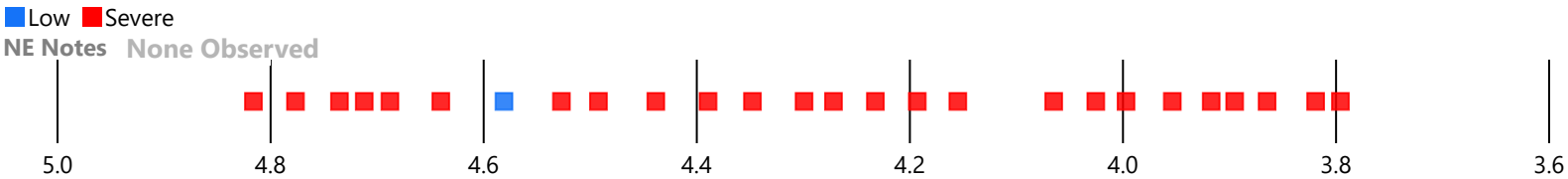


REACH A

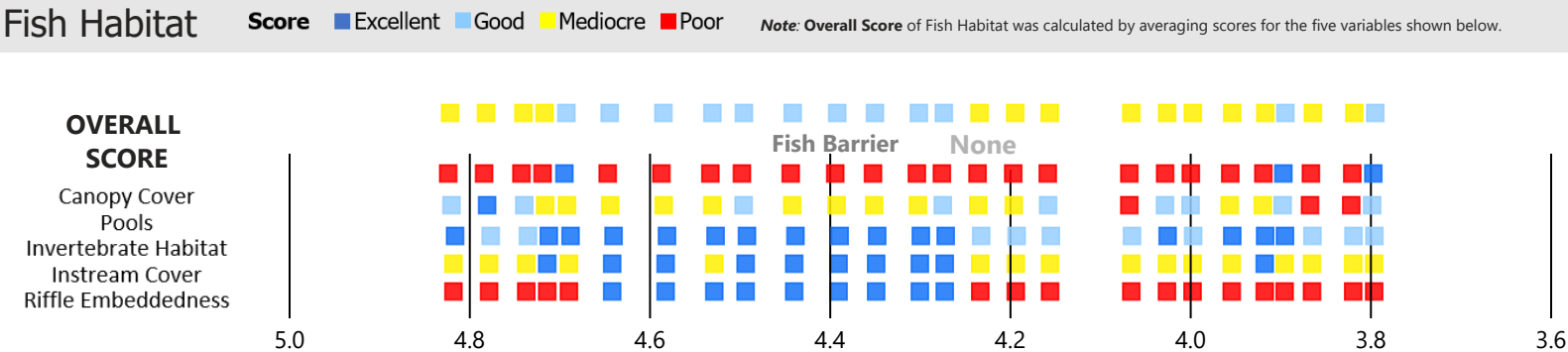
Water Appearance



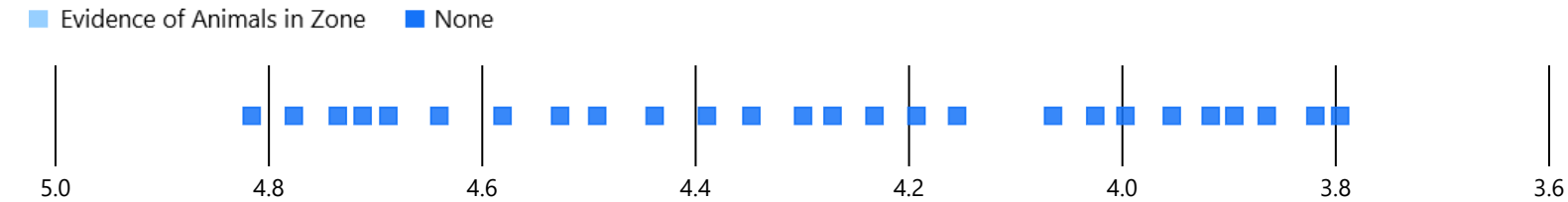
Nutrient Enrichment



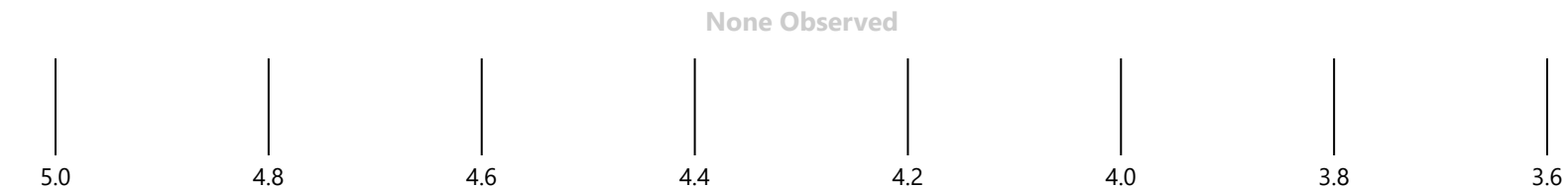
Fish Habitat



Manure Presence



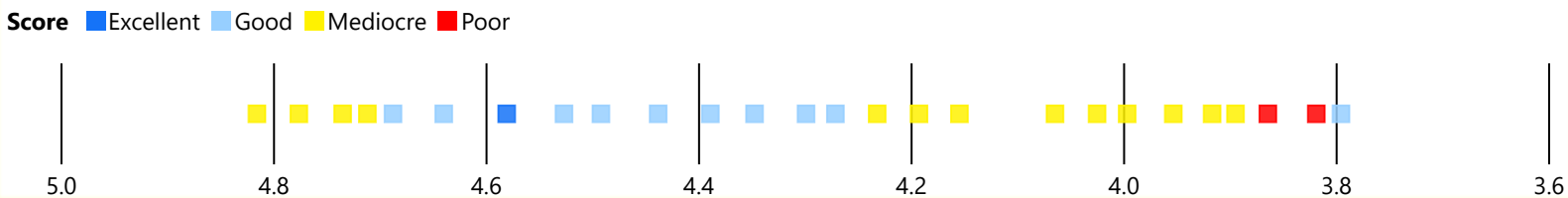
Invasive Species



Aquatic Vegetation



OVERALL SVAP RATING



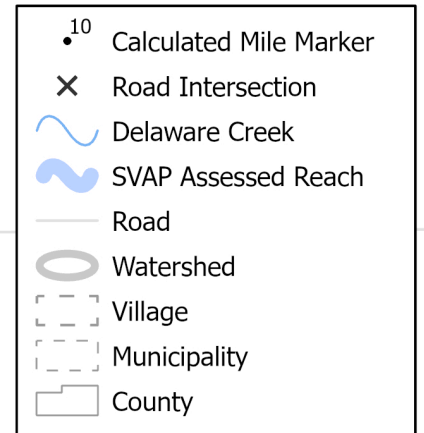
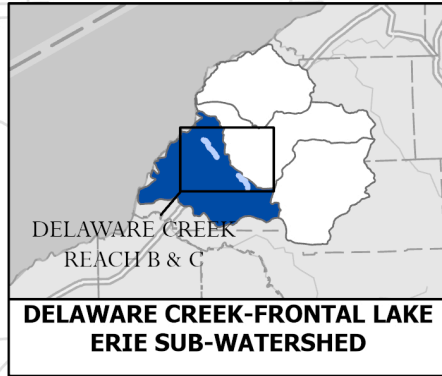
DELAWARE CREEK

STREAM VISUAL ASSESSMENT PROTOCOL (SVAP) RESULTS FOR REACH B & C

AVERAGE OVERALL SVAP RATING:
REACH B: **6.9**, REACH C: **6.9**

REACH B

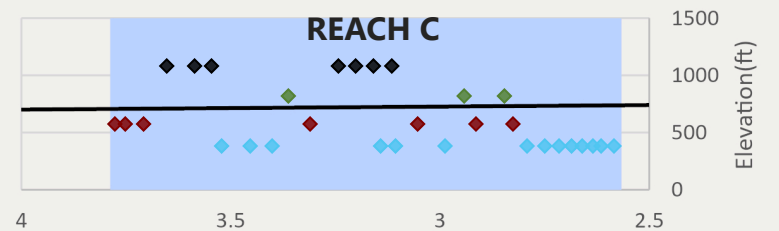
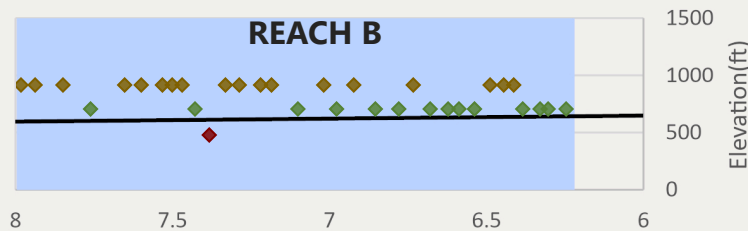
REACH C



0 0.25 0.5 1 Miles

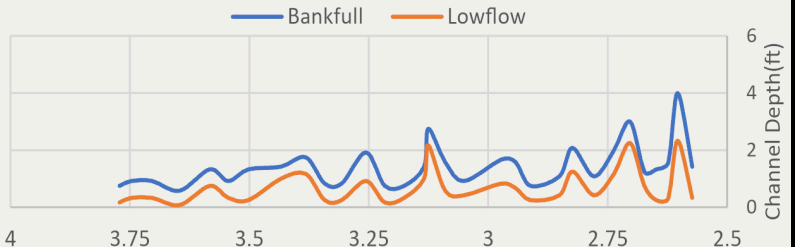
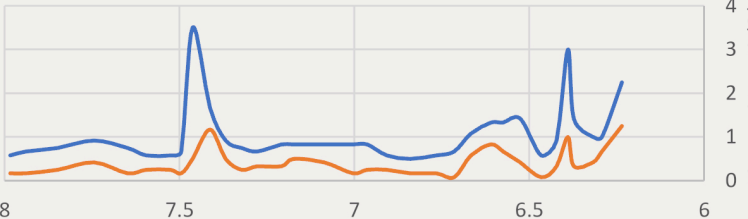
Elevation Profile

Substrate ◆ Bedrock/Concrete ◆ Boulder ◆ Cobble ◆ Gravel ◆ Sand ◆ Silt/Clay



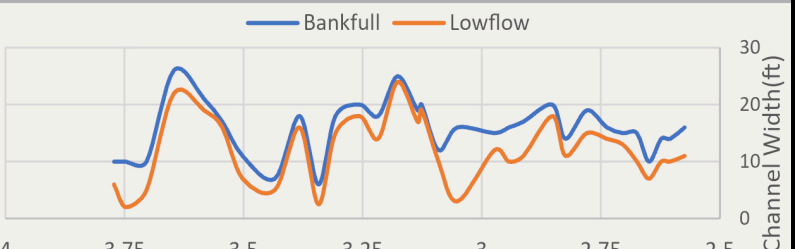
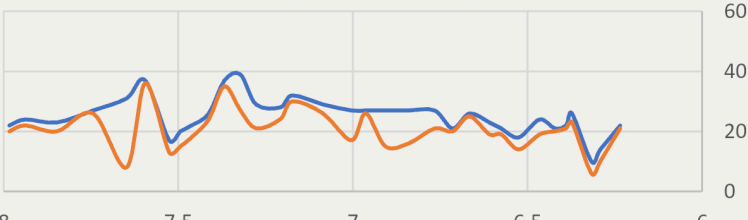
Channel Depth

Bankfull Lowflow



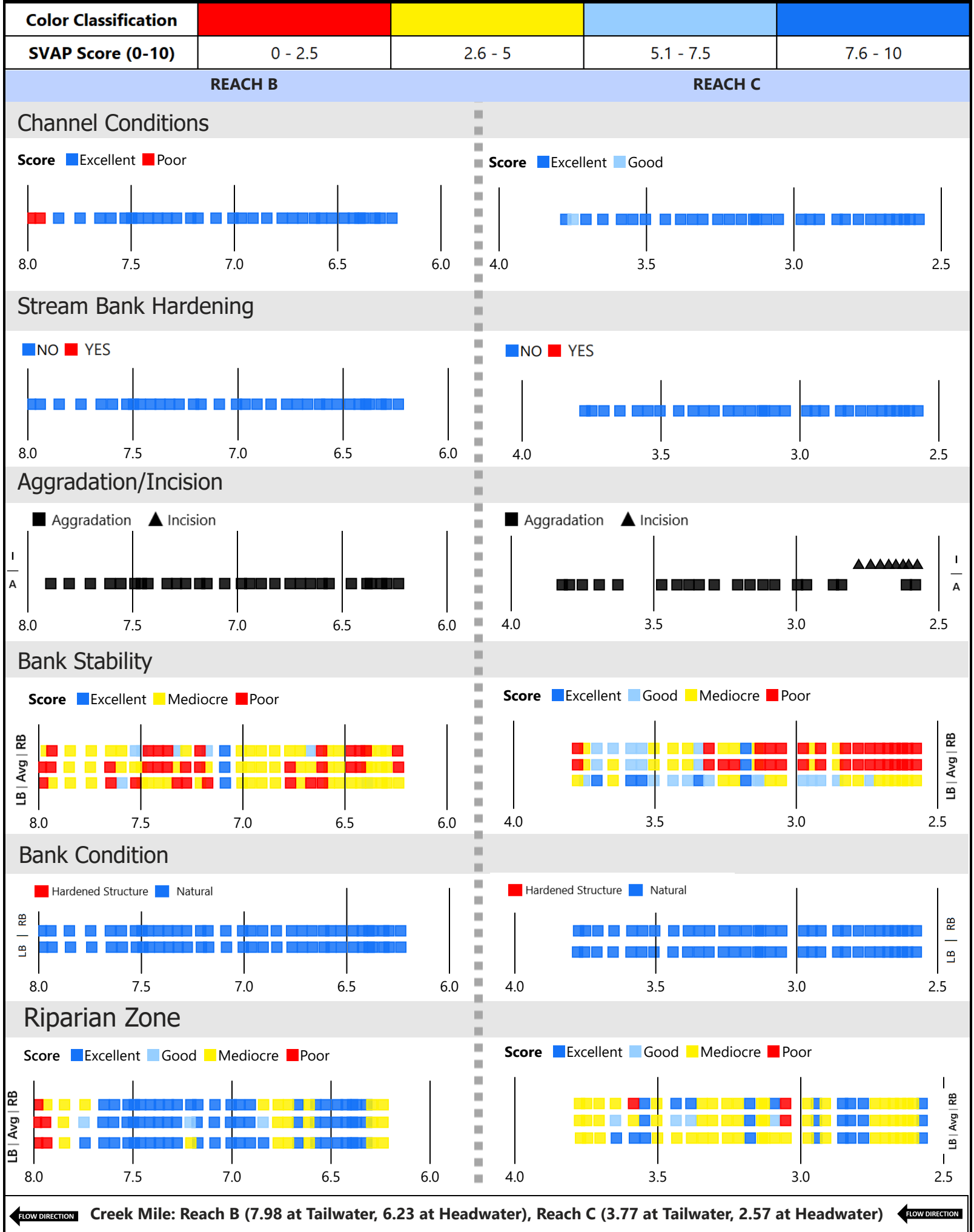
Channel Width

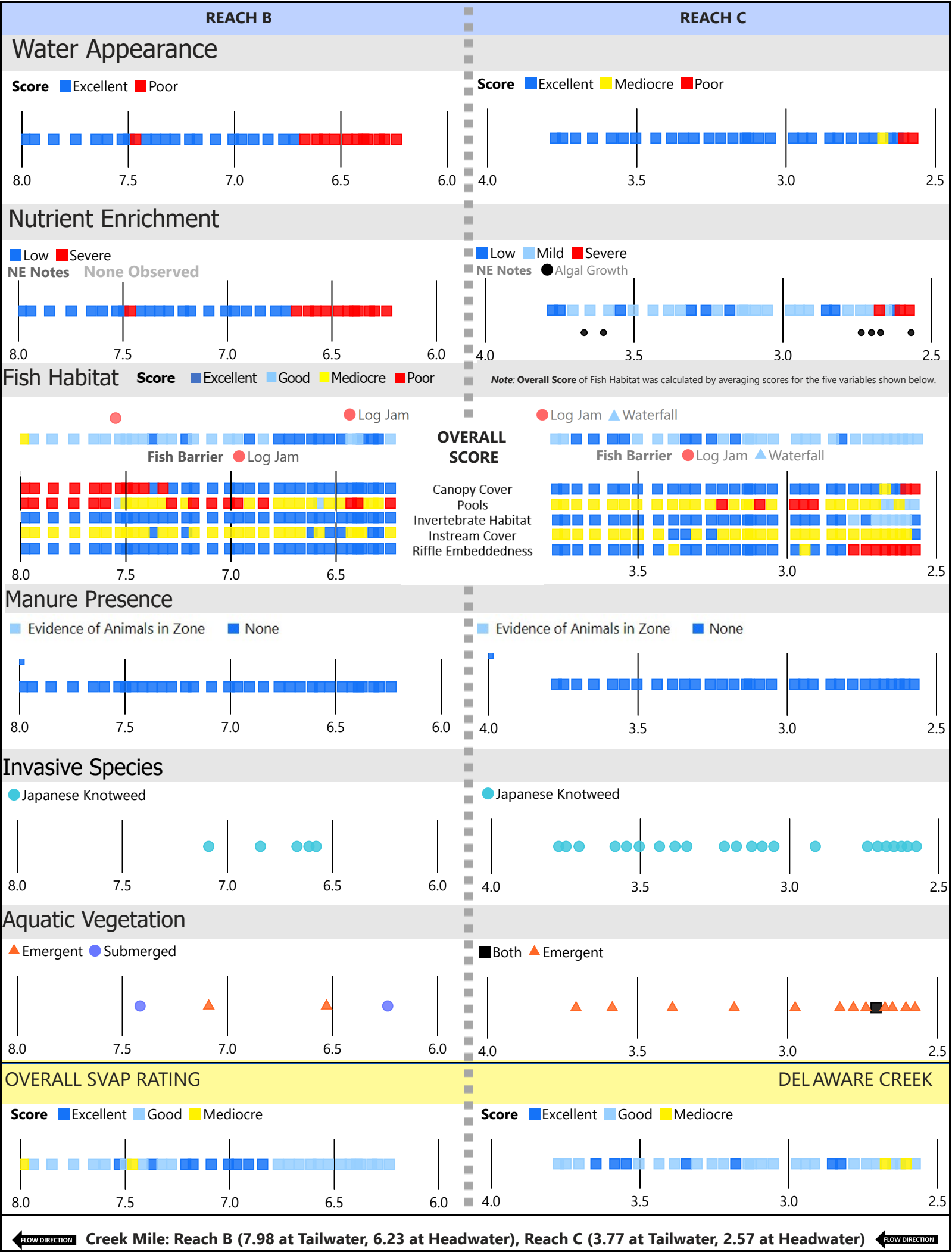
Bankfull Lowflow



Creek Mile: Reach B (7.98 at Tailwater, 6.23 at Headwater), Reach C (3.77 at Tailwater, 2.57 at Headwater)

Classification Scheme for SVAP Parameters

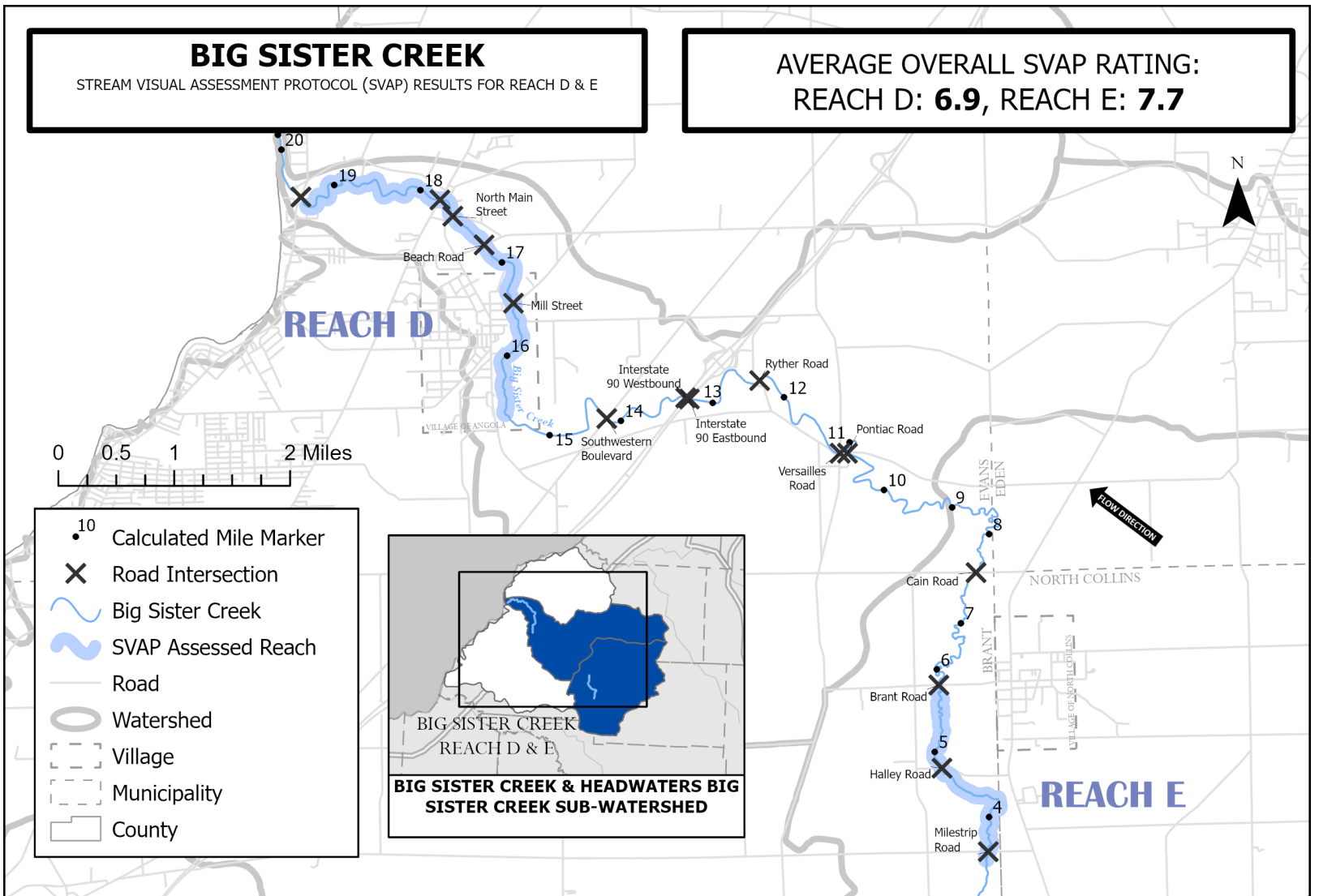




BIG SISTER CREEK

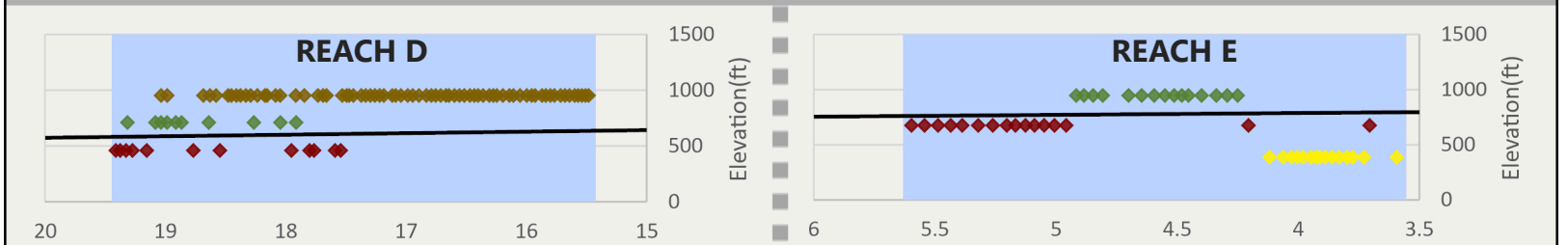
STREAM VISUAL ASSESSMENT PROTOCOL (SVAP) RESULTS FOR REACH D & E

AVERAGE OVERALL SVAP RATING:
REACH D: **6.9**, REACH E: **7.7**

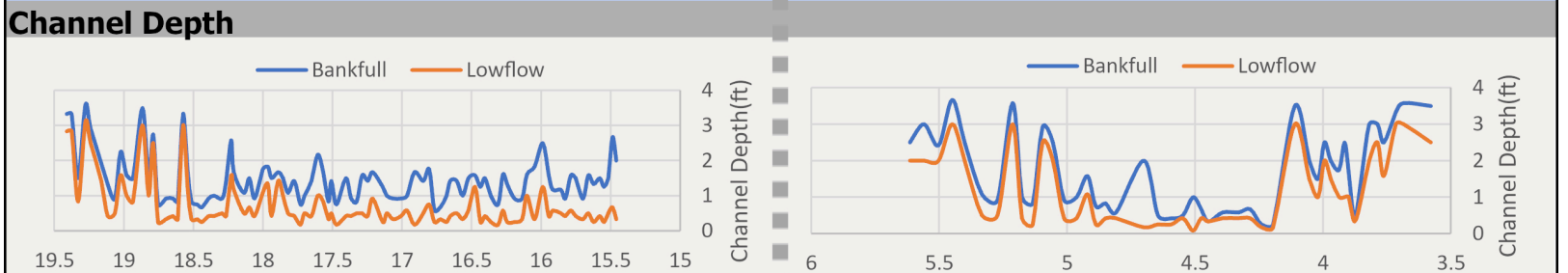


Elevation Profile

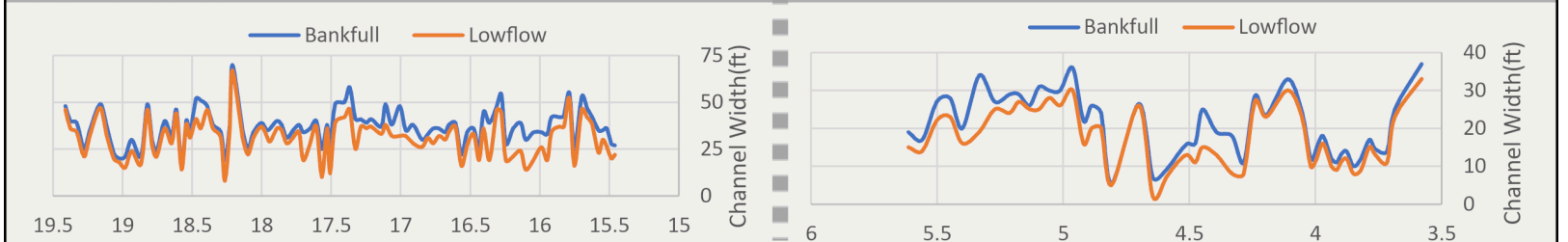
Substrate ◆ Bedrock/Concrete ◆ Cobble ◆ Gravel ◆ Silt/Clay



Channel Depth

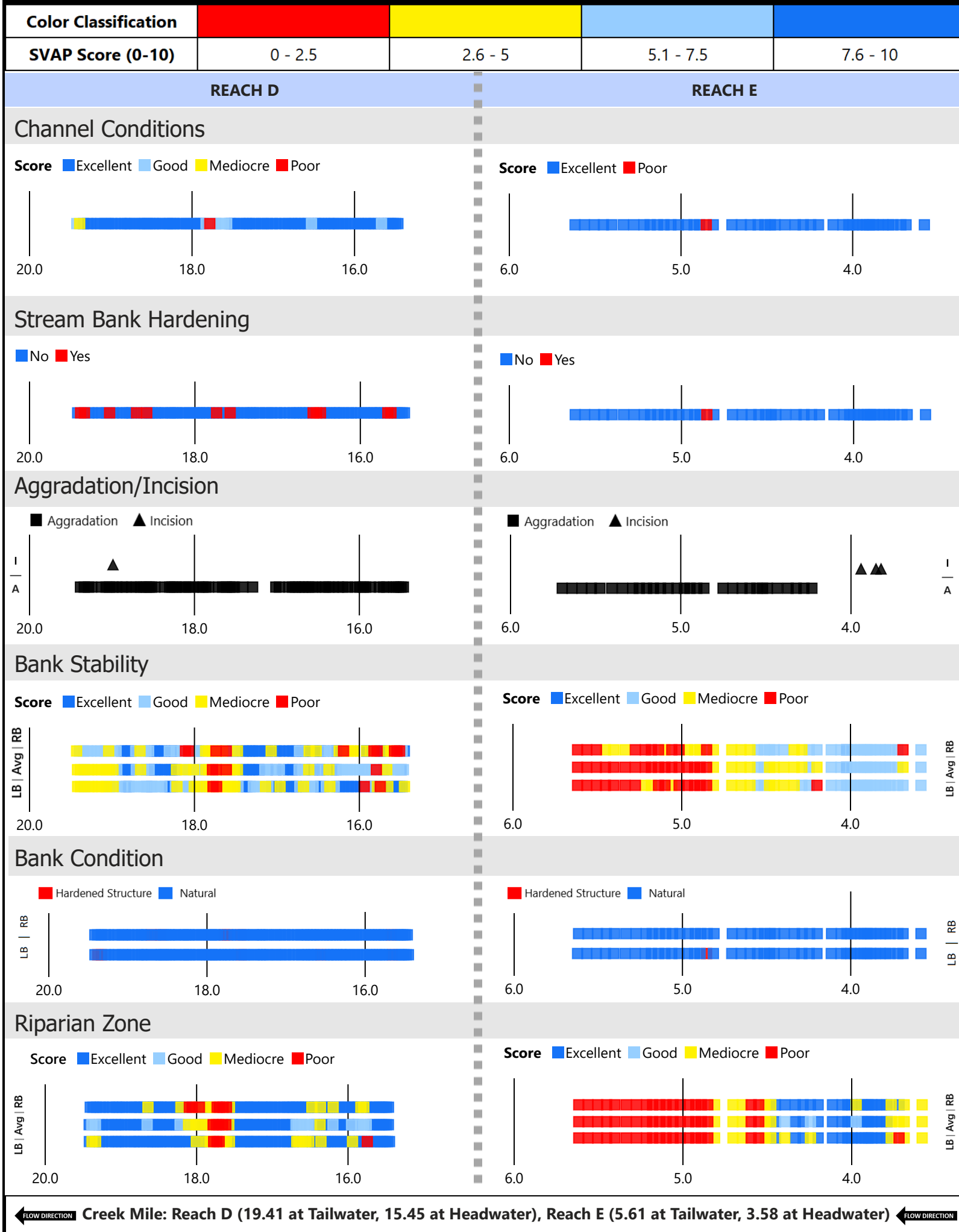


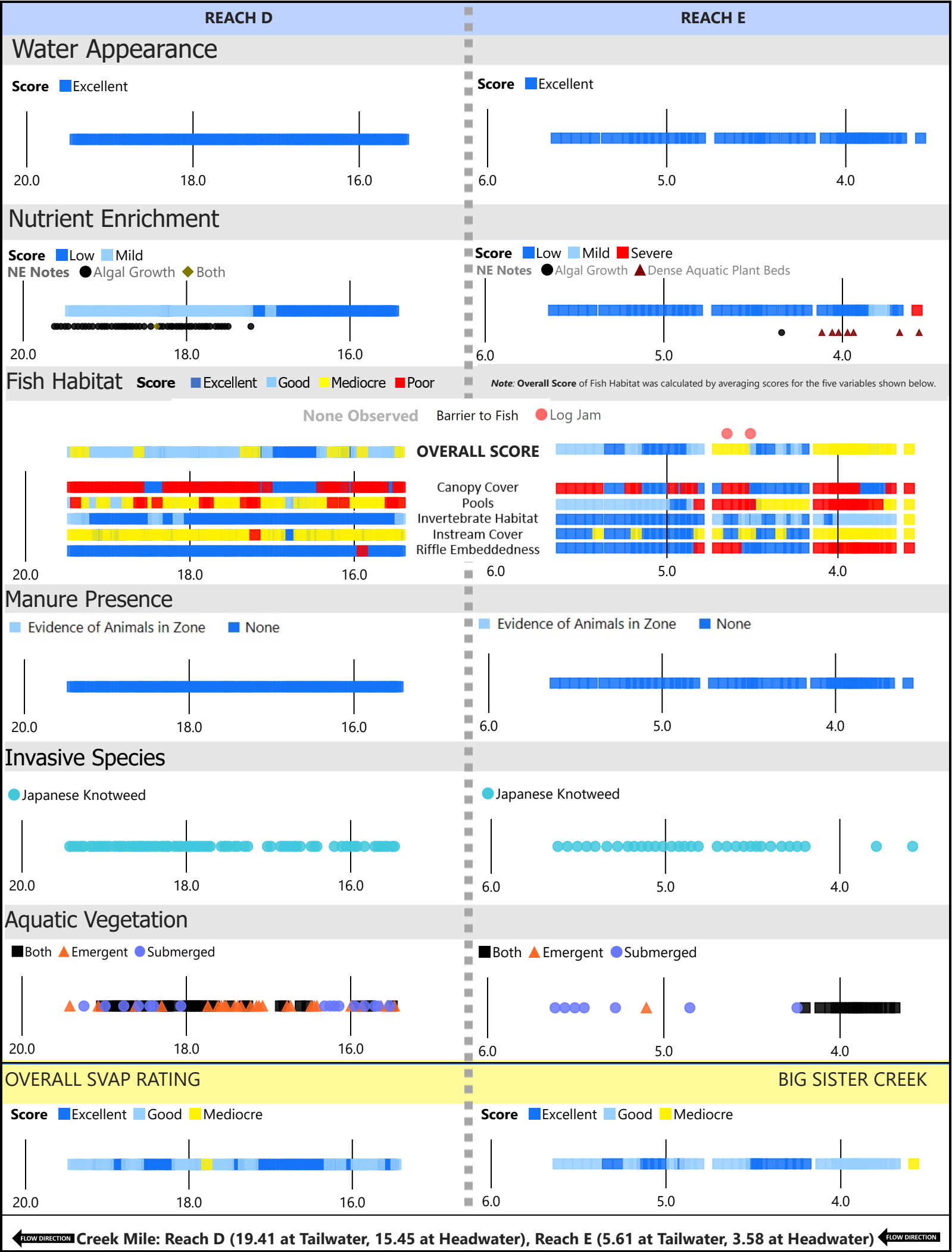
Channel Width



← FLOW DIRECTION Creek Mile: Reach D (19.41 at Tailwater, 15.45 at Headwater), Reach E (5.61 at Tailwater, 3.58 at Headwater) FLOW DIRECTION →

Classification Scheme for SVAP Parameters

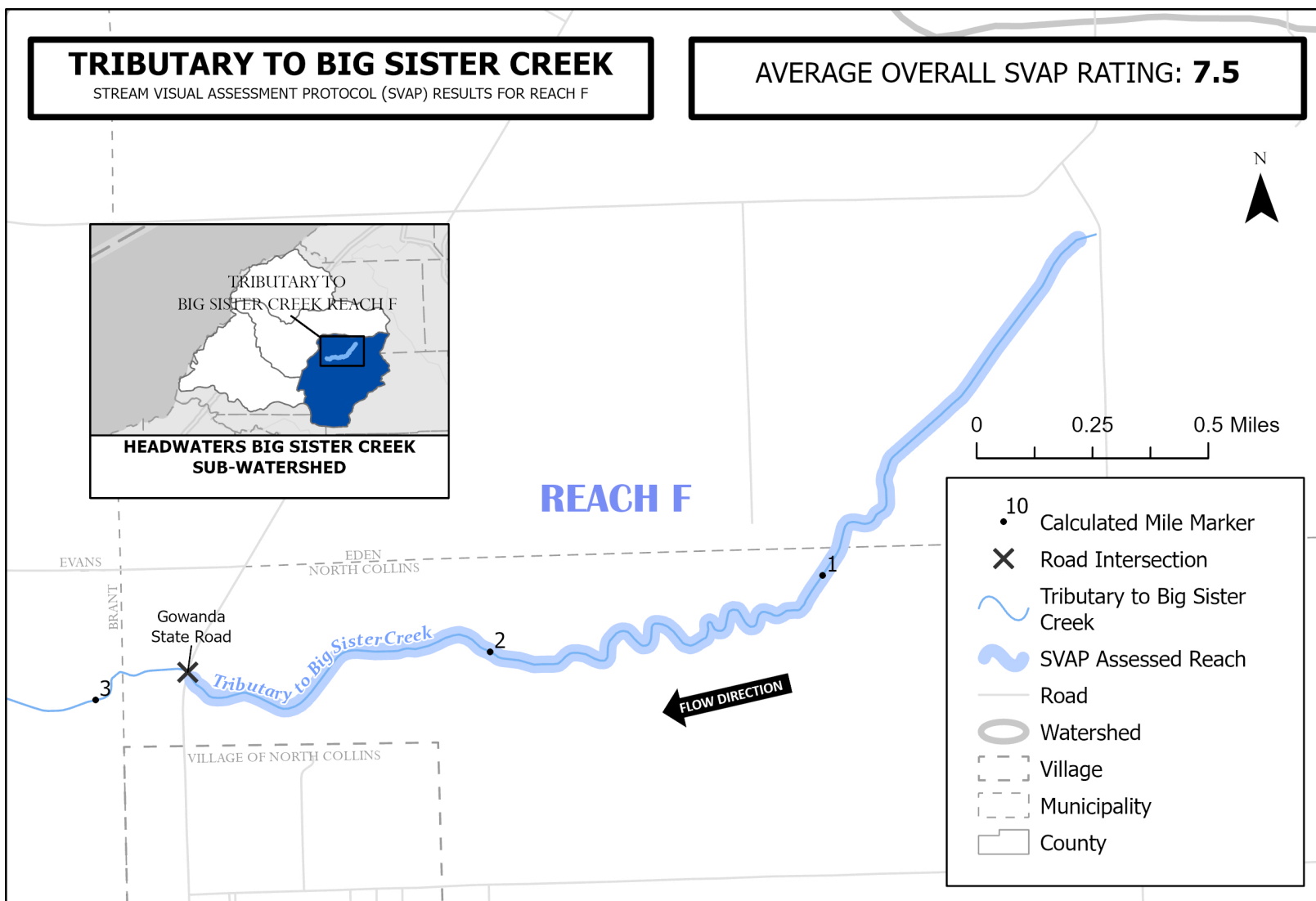




TRIBUTARY TO BIG SISTER CREEK

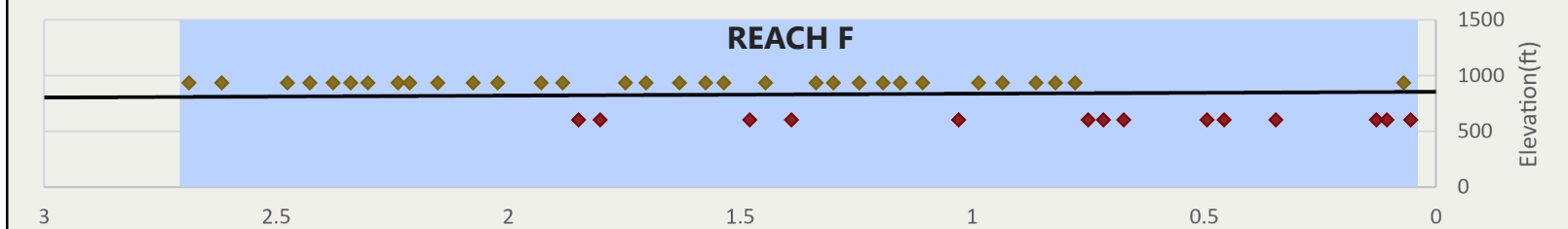
STREAM VISUAL ASSESSMENT PROTOCOL (SVAP) RESULTS FOR REACH F

AVERAGE OVERALL SVAP RATING: **7.5**

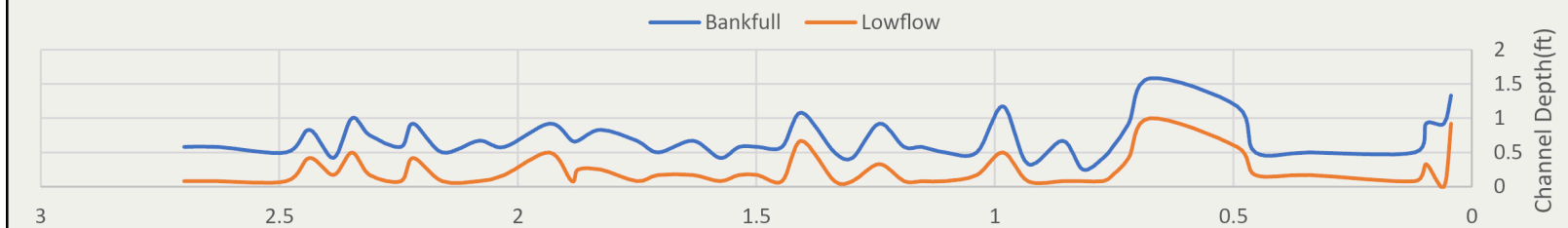


Elevation Profile

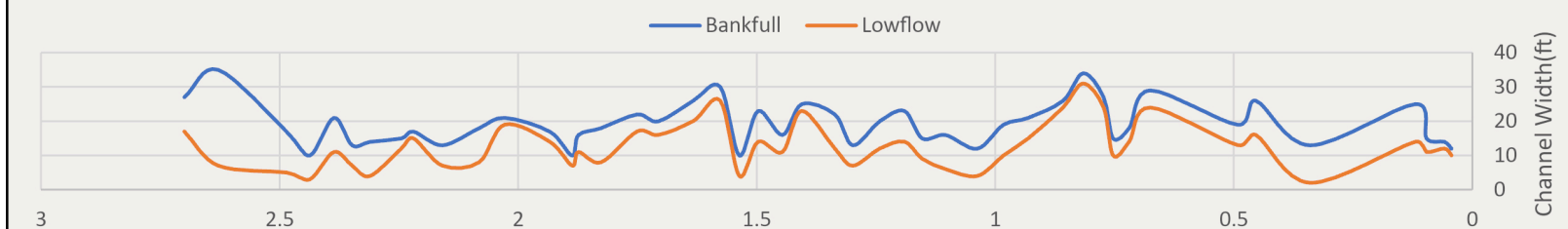
Substrate ◆ Bedrock ◆ Gravel



Channel Depth



Channel Width



← FLOW DIRECTION Creek Mile: Reach F (2.70 at Tailwater, 0.04 at Headwater) FLOW DIRECTION →

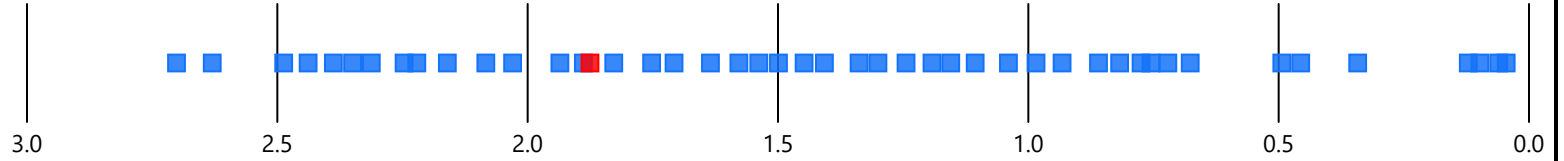
Classification Scheme for SVAP Parameters

Color Classification				
SVAP Score (0-10)	0 - 2.5	2.6 - 5	5.1 - 7.5	7.6 - 10

REACH F

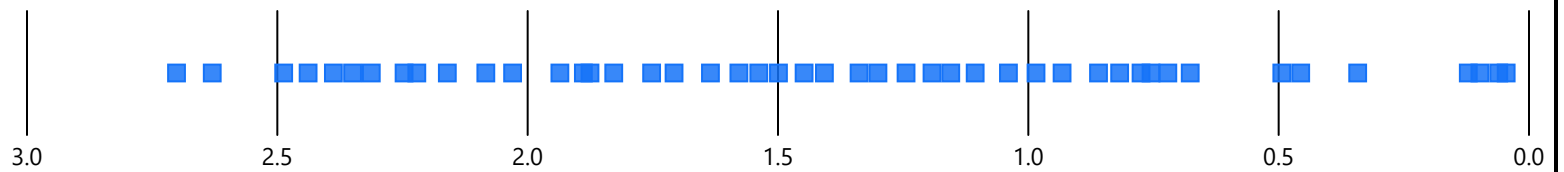
Channel Conditions

Score ■ Excellent ■ Poor



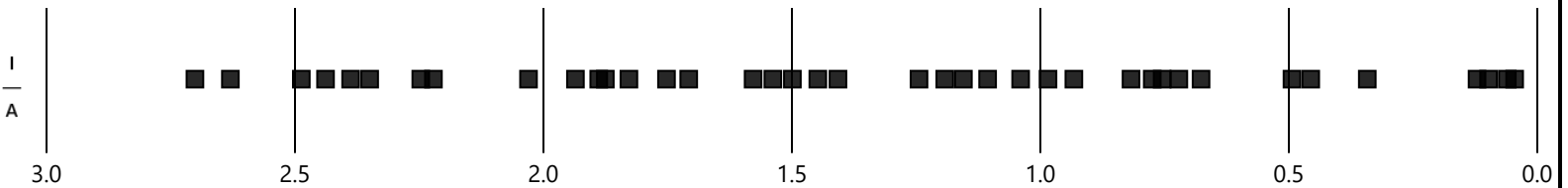
Stream Bank Hardening

■ No



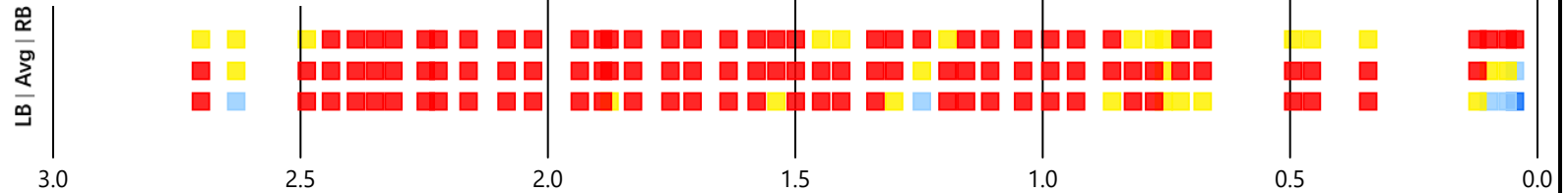
Aggradation/Incision

■ Aggradation ▲ Incision



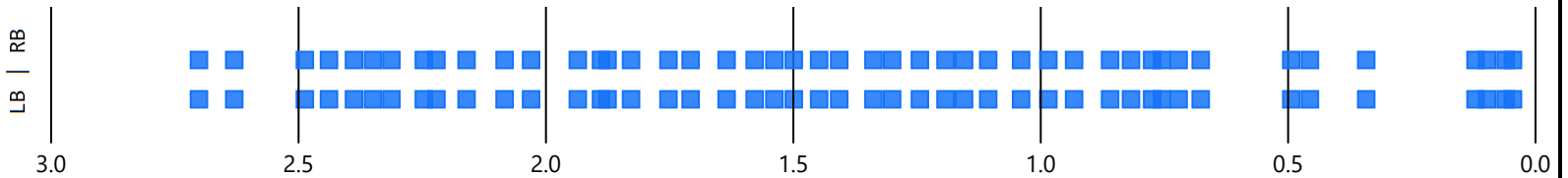
Bank Stability

Score ■ Excellent ■ Good ■ Mediocre ■ Poor



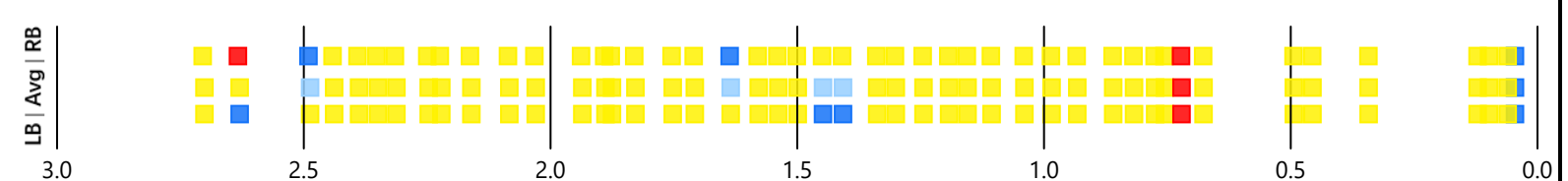
Bank Condition

■ Hardened Structure ■ Natural



Riparian Zone

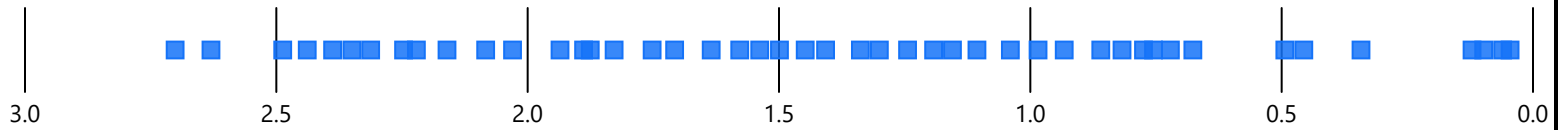
Score ■ Excellent ■ Good ■ Mediocre ■ Poor



REACH F

Water Appearance

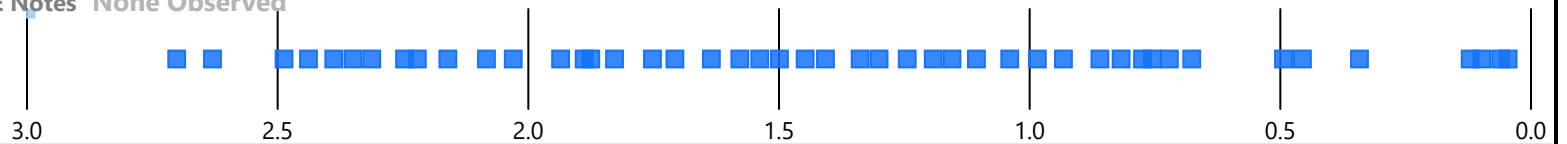
Score ■ Excellent



Nutrient Enrichment

■ Low ■ Mild

NE Notes None Observed



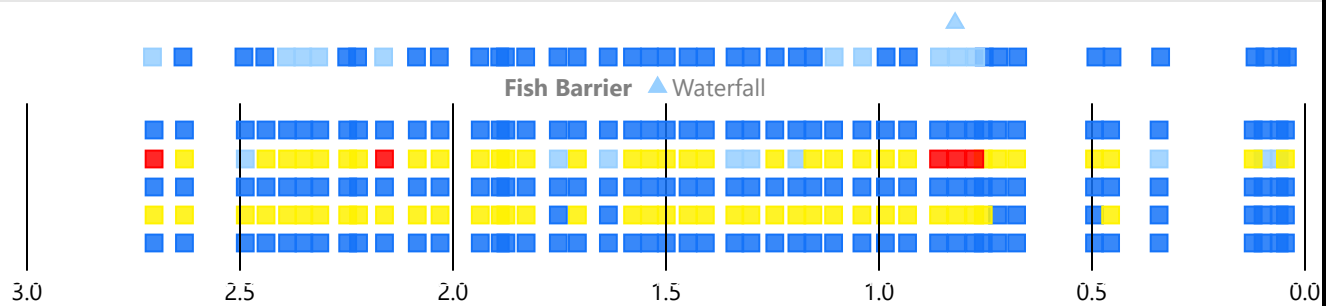
Fish Habitat

Score ■ Excellent ■ Good ■ Mediocre ■ Poor

Note: Overall Score of Fish Habitat was calculated by averaging scores for the five variables shown below.

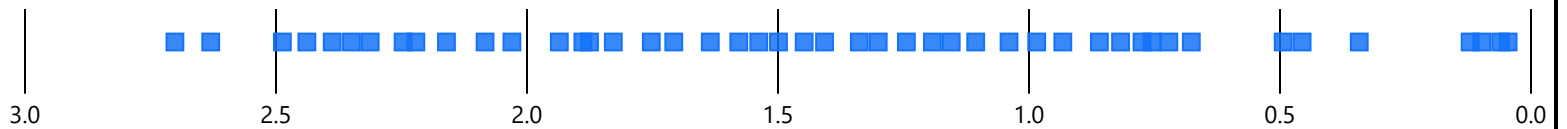
OVERALL SCORE

Canopy Cover
Pools
Invertebrate Habitat
Instream Cover
Riffle Embeddedness



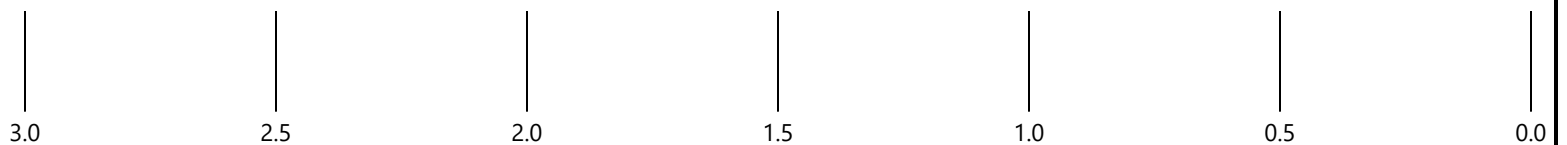
Manure Presence

■ None



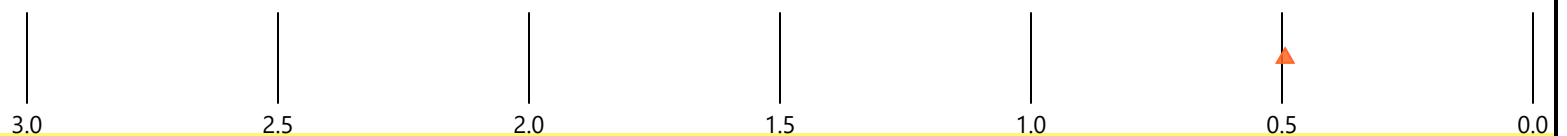
Invasive Species

None Observed



Aquatic Vegetation

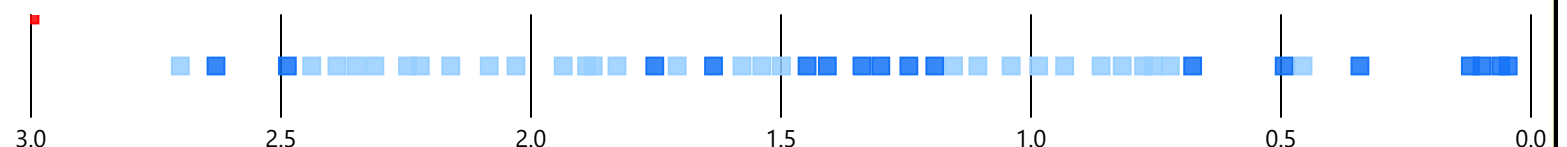
▲ Emergent



OVERALL SVAP RATING

TRIBUTARY TO BIG SISTER CREEK

Score ■ Excellent ■ Good ■ Poor



← FLOW DIRECTION

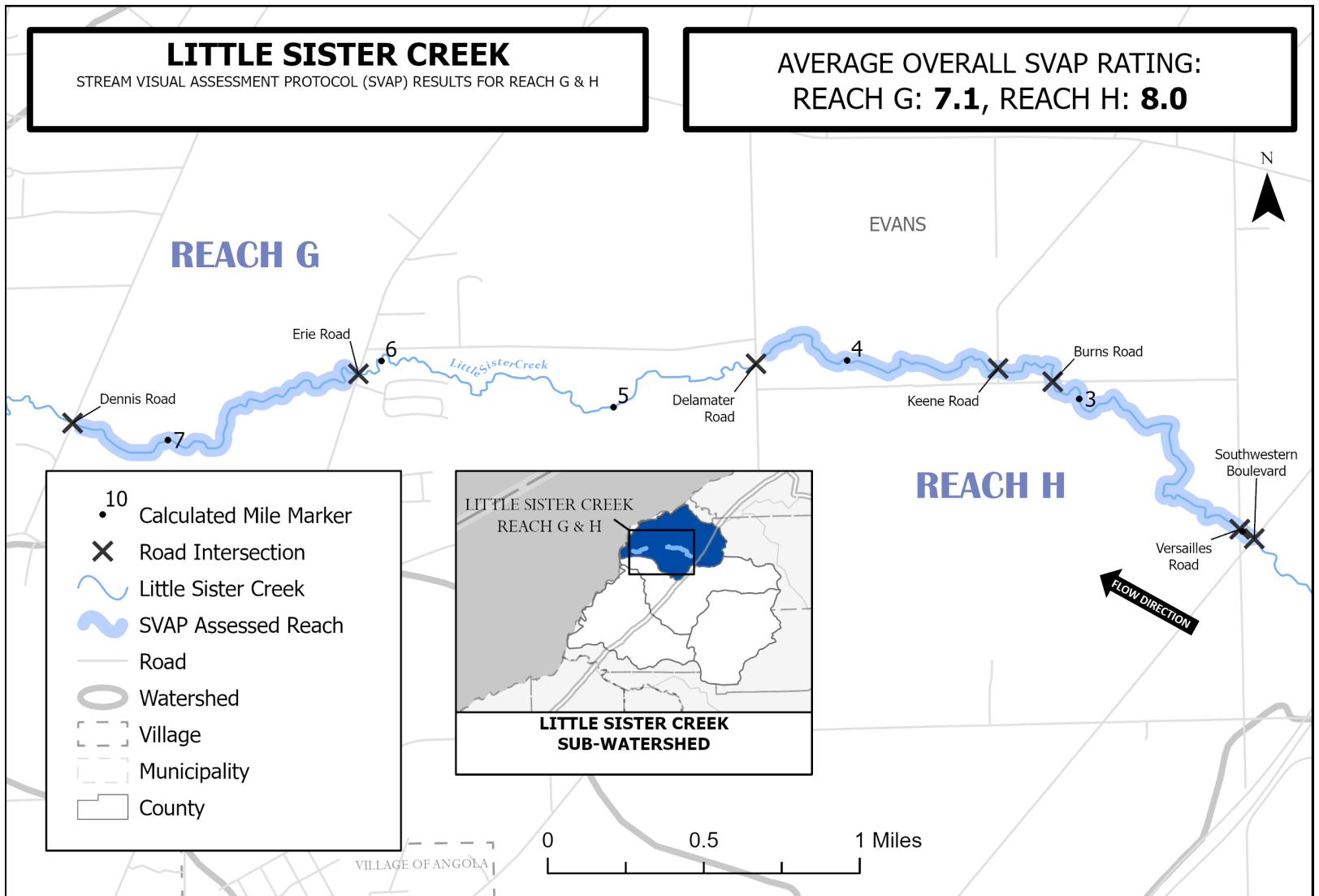
Creek Mile (2.70 at Tailwater, 0.04 at Headwater)

← FLOW DIRECTION

LITTLE SISTER CREEK

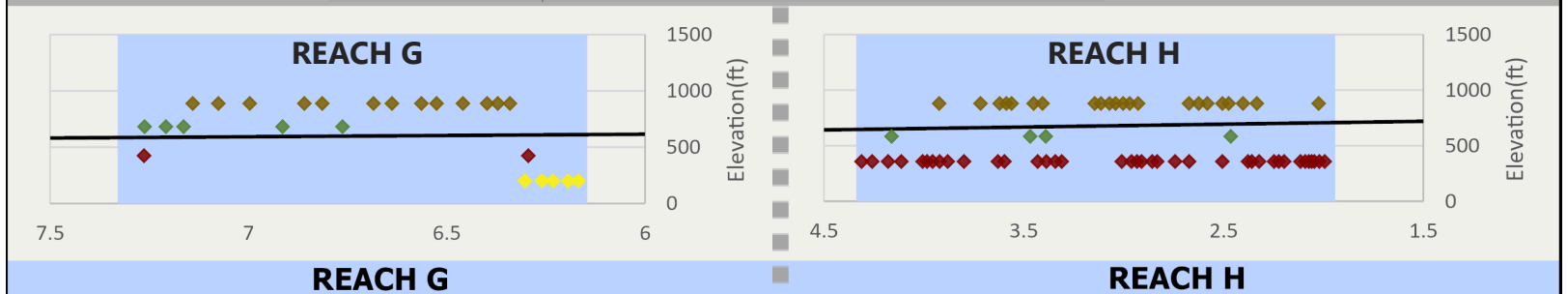
STREAM VISUAL ASSESSMENT PROTOCOL (SVAP) RESULTS FOR REACH G & H

AVERAGE OVERALL SVAP RATING:
REACH G: **7.1**, REACH H: **8.0**



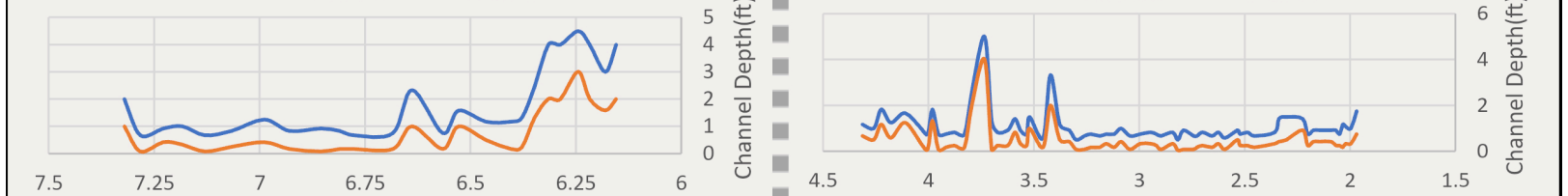
Elevation Profile

Substrate ◆ Bedrock/Concrete ◆ Cobble ◆ Gravel ◆ Silt/Clay



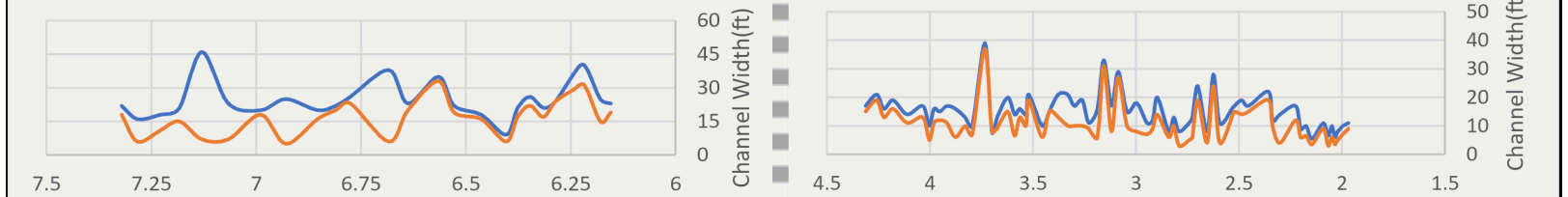
Channel Depth

— Bankfull — Lowflow



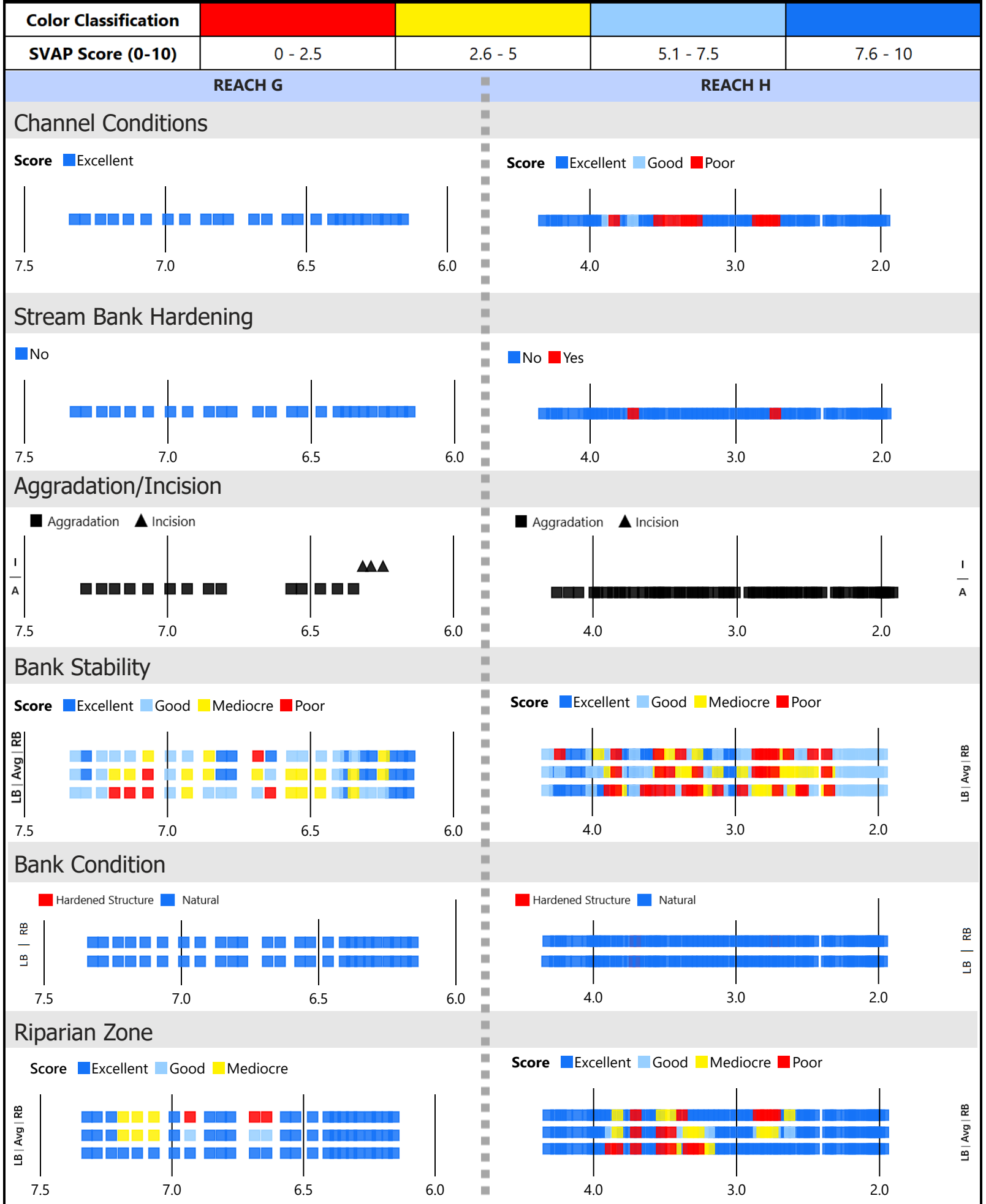
Channel Width

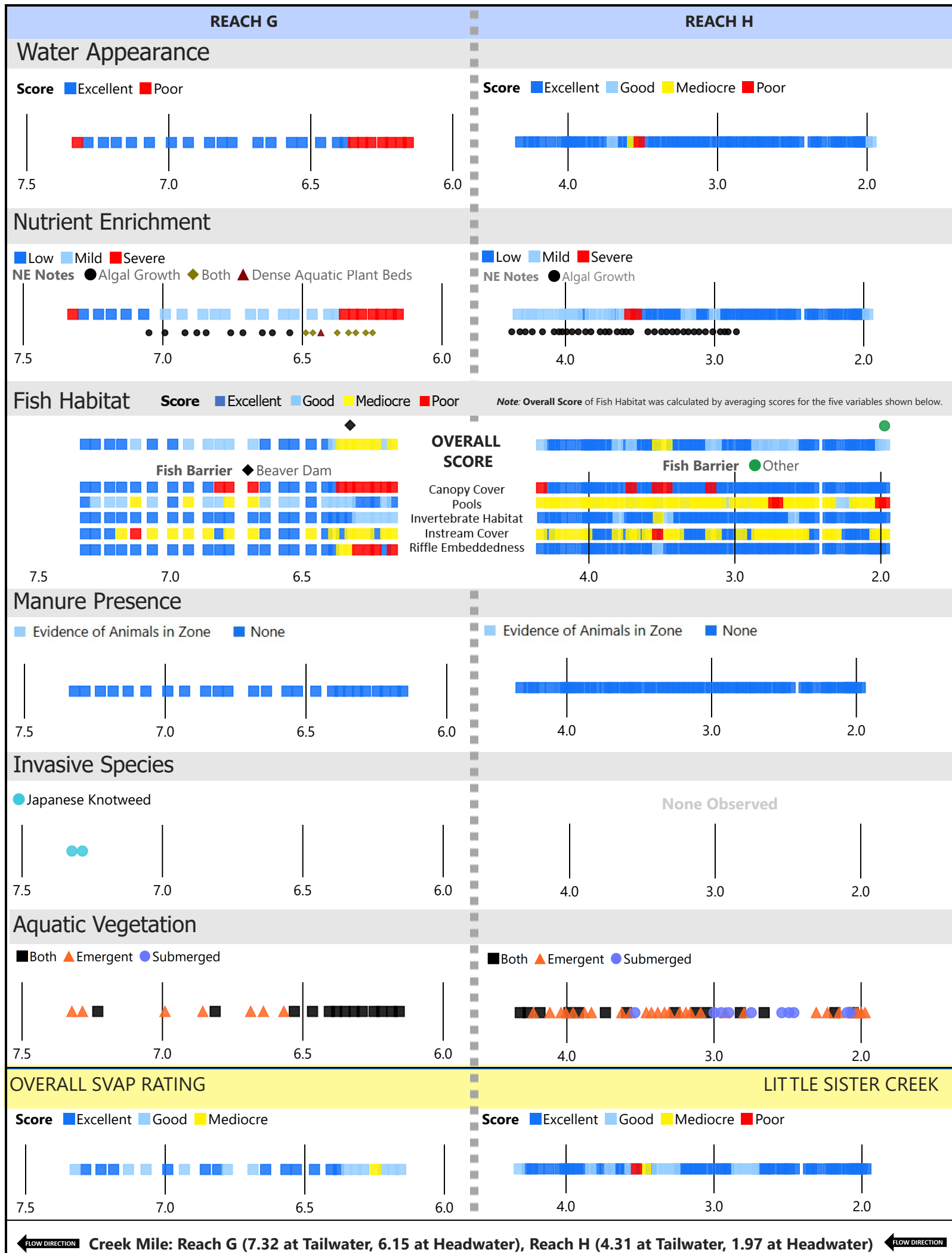
— Bankfull — Lowflow



← FLOW DIRECTION Creek Mile: Reach G (7.32 at Tailwater, 6.15 at Headwater), Reach H (4.31 at Tailwater, 1.97 at Headwater) → FLOW DIRECTION

Classification Scheme for SVAP Parameters

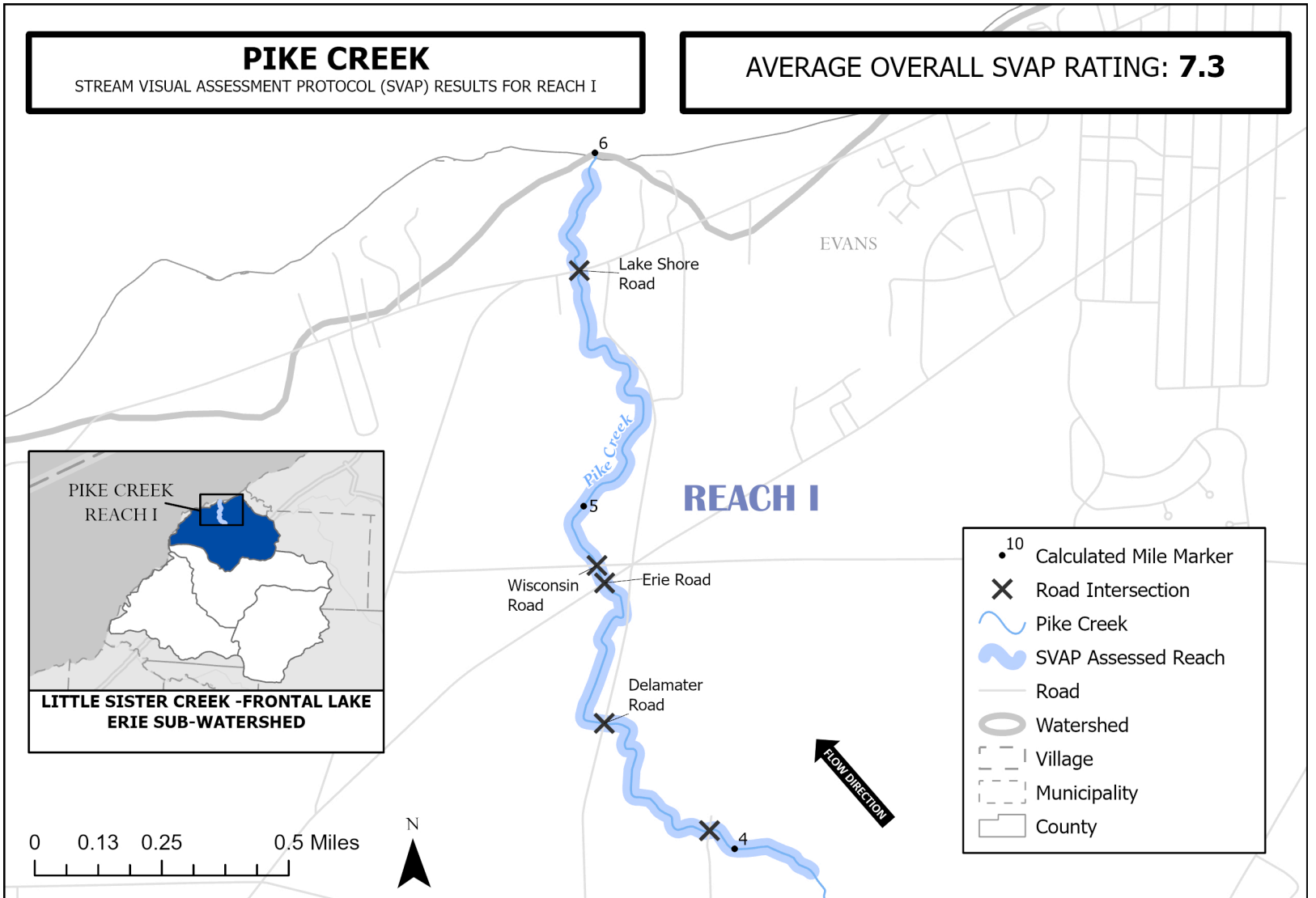




PIKE CREEK

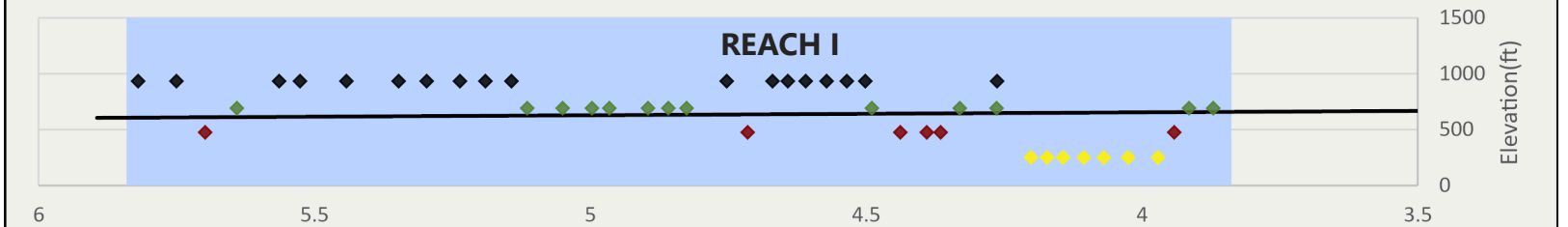
STREAM VISUAL ASSESSMENT PROTOCOL (SVAP) RESULTS FOR REACH I

AVERAGE OVERALL SVAP RATING: **7.3**

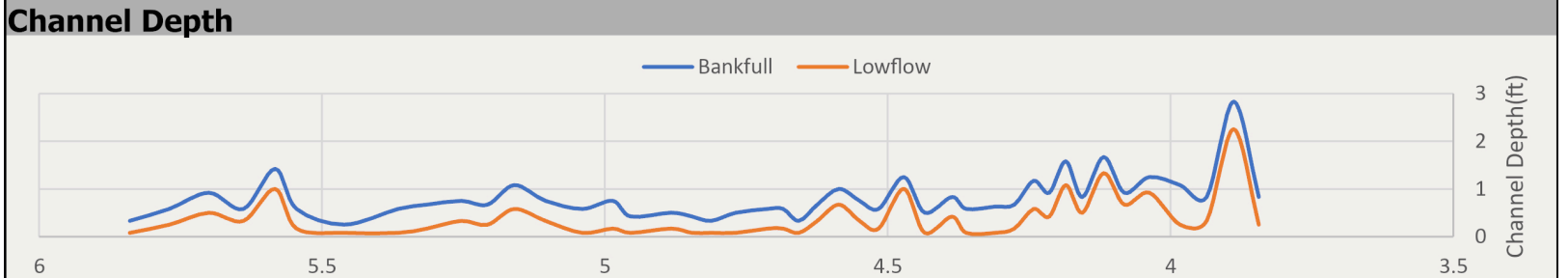


Elevation Profile

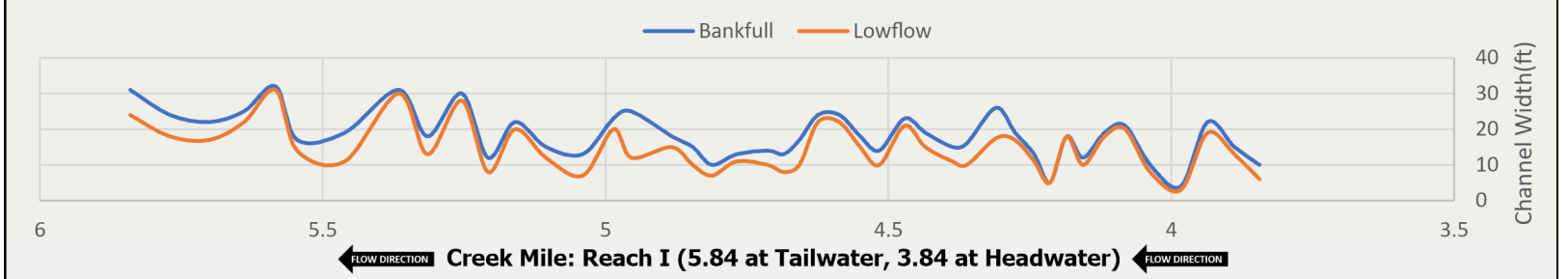
Substrate ◆ BEDROCK/CONCRETE ◆ BOULDER ◆ COBBLE ◆ GRAVEL ◆ SAND ◆ SILT/CLAY



Channel Depth



Channel Width



← FLOW DIRECTION Creek Mile: Reach I (5.84 at Tailwater, 3.84 at Headwater) FLOW DIRECTION →

Classification Scheme for SVAP Parameters

Color Classification				
SVAP Score (0-10)	0 - 2.5	2.6 - 5	5.1 - 7.5	7.6 - 10

REACH I

Channel Conditions

Score ■ Excellent ■ Good ■ Mediocre ■ Poor



Stream Bank Hardening

■ No



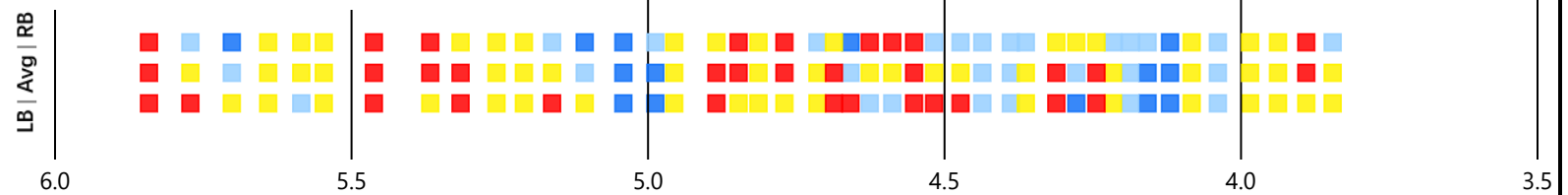
Aggradation/Incision

■ Aggradation ▲ Incision



Bank Stability

Score ■ Excellent ■ Good ■ Mediocre ■ Poor



Bank Condition

■ Hardened Structure ■ Natural



Riparian Zone

Score ■ Excellent ■ Good ■ Mediocre ■ Poor



Creek Mile (5.84 at Tailwater, 3.84 at Headwater)



REACH I

Water Appearance

Score ■ Excellent



Nutrient Enrichment

Low ■
NE Notes ▲ Dense Aquatic Plant Beds



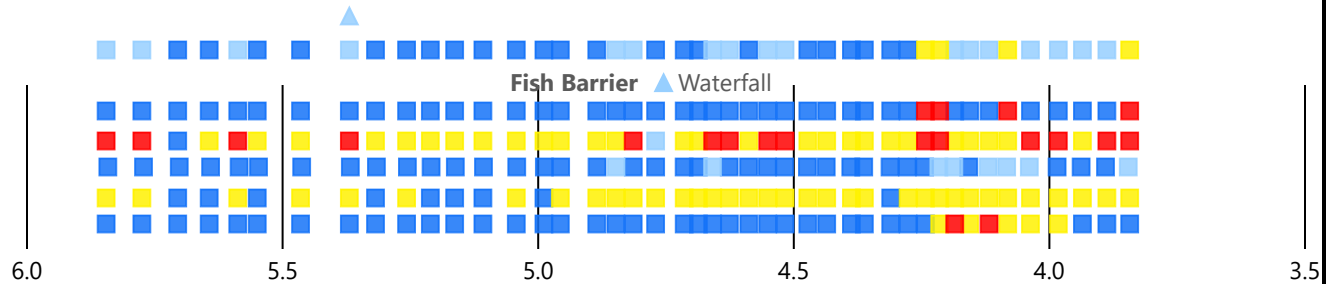
Fish Habitat

Score ■ Excellent ■ Good ■ Mediocre ■ Poor

Note: Overall Score of Fish Habitat was calculated by averaging scores for the five variables shown below.

OVERALL SCORE

Canopy Cover
Pools
Invertebrate Habitat
Instream Cover
Riffle Embeddedness



Manure Presence

■ None



Invasive Species

● Japanese Knotweed



Aquatic Vegetation

▲ Both ▲ Emergent ▲ Submerged



OVERALL SVAP RATING

PIKE CREEK

Score ■ Excellent ■ Good ■ Mediocre



← FLOW DIRECTION

Creek Mile (5.84 at Tailwater, 3.84 at Headwater)

← FLOW DIRECTION