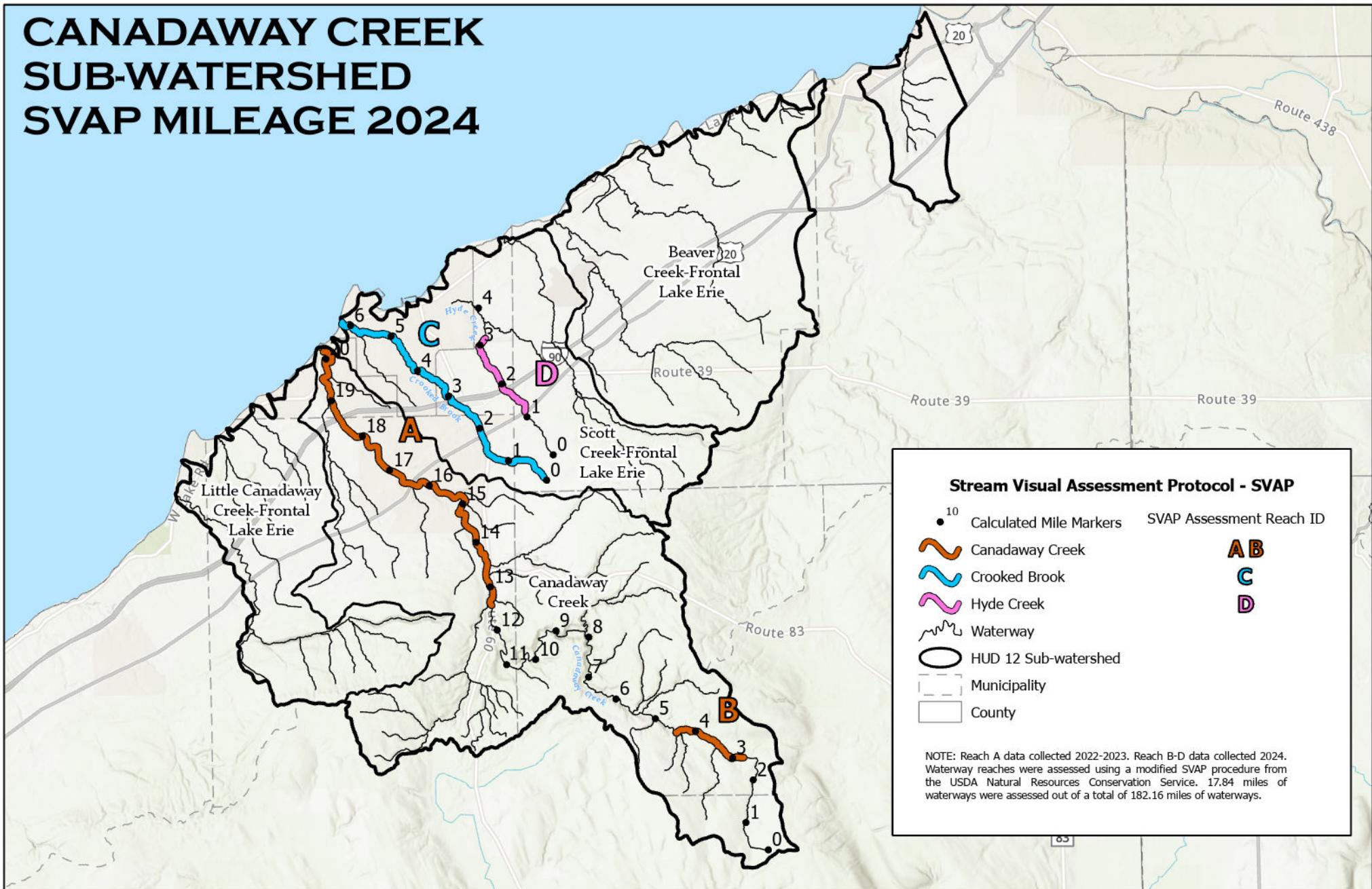


CANADAWAY CREEK SUB-WATERSHED SVAP MILEAGE 2024



Department
of State

This map was prepared with funding
provided by the New York State
Department of State under Title 11 of the
Environmental Protection Fund.

Esri, NASA, NGA, USGSEsri, Airbus DS, N Robinson,
NCEAS, NLS, OS, NMA, Geodata styrelsen,
Rijkswaterstaat, GSA, Geoland, FEMA, Intermap and the
GIS user community



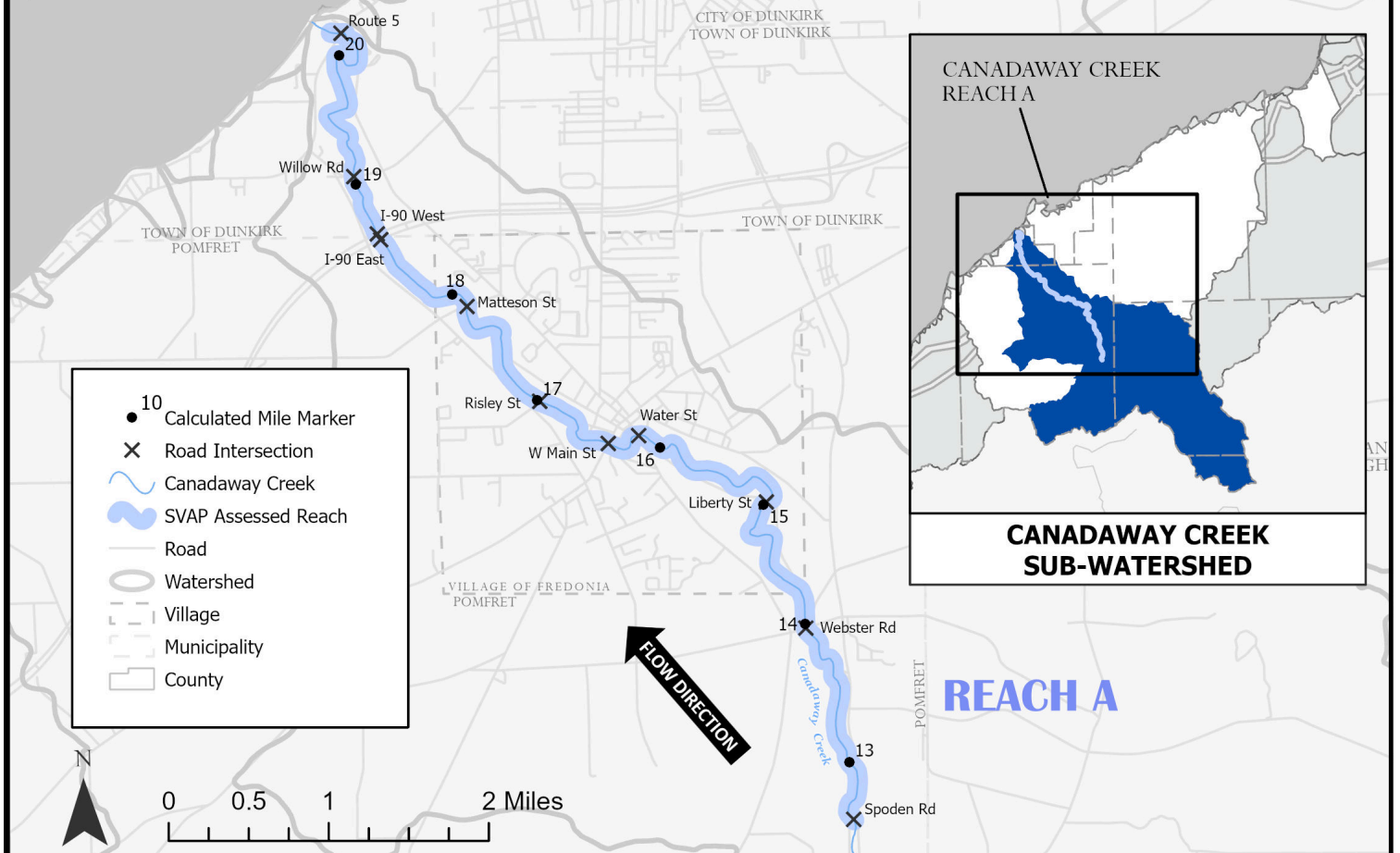
0 1 2 4 Miles



CANADAWAY CREEK

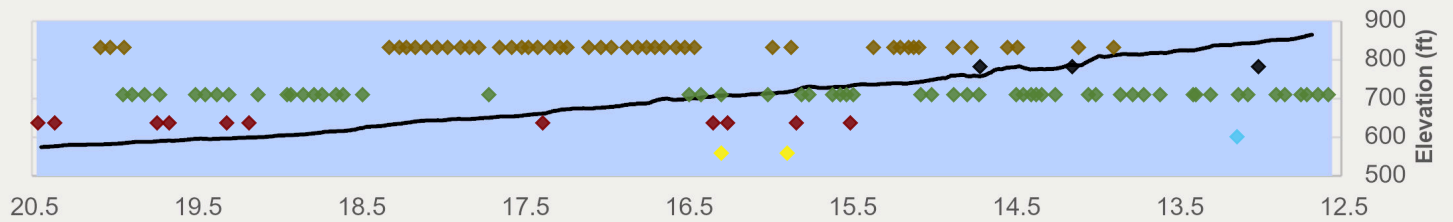
STREAM VISUAL ASSESSMENT PROTOCOL (SVAP) RESULTS
FOR REACH A

AVERAGE OVERALL SVAP RATING: **7.6**



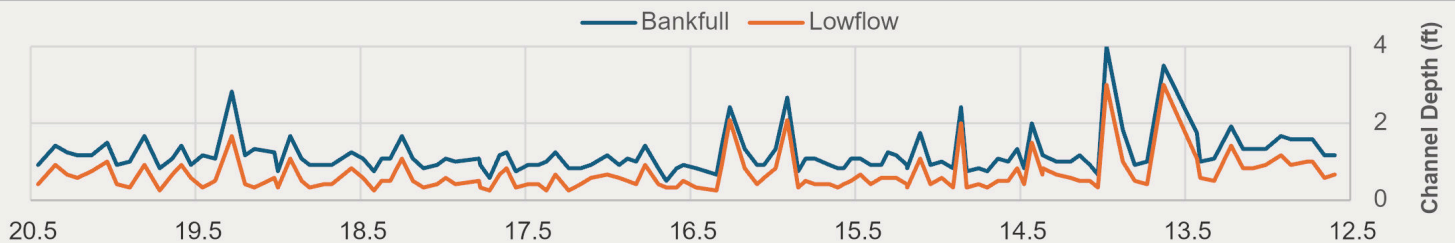
Elevation Profile

Substrate ◆ Bedrock ◆ Boulder ◆ Cobble ◆ Gravel ◆ Sand ◆ Silt/Clay

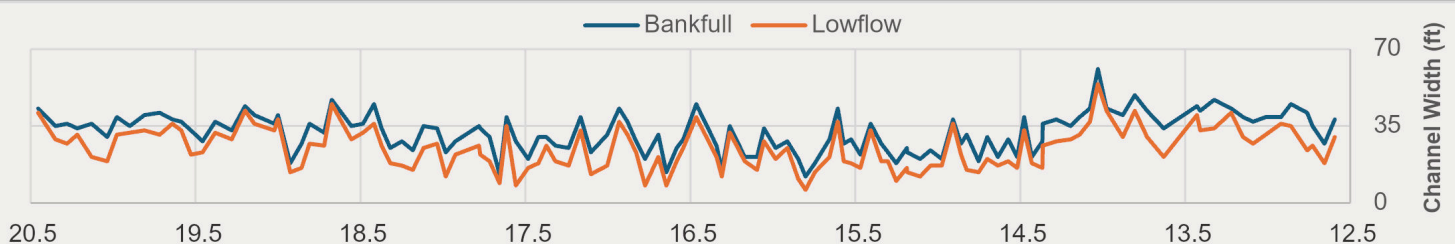


REACH A

Channel Depth



Channel Width



← FLOW DIRECTION Creek Mile (20.45 at Tailwater, 12.59 at Headwater) FLOW DIRECTION →

Classification Scheme for SVAP Parameters

Color Classification				
SVAP Score (0-10)	0 - 2.5	2.6 - 5	5.1 - 7.5	7.6 - 10

REACH A

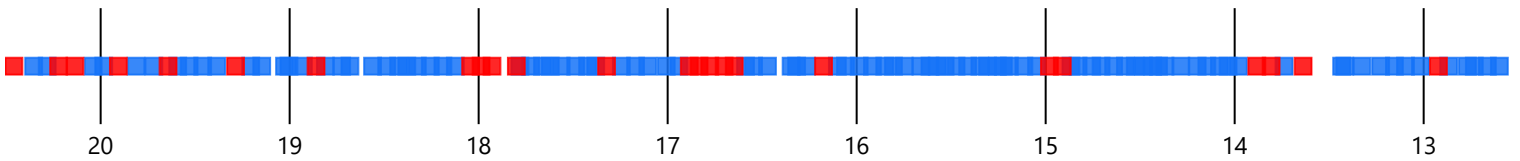
Channel Conditions

Score ■ Excellent ■ Good ■ Mediocre ■ Poor



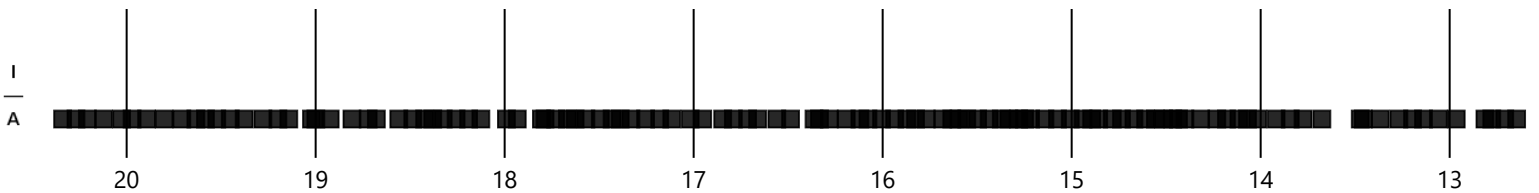
Stream Bank Hardening

■ No ■ Yes



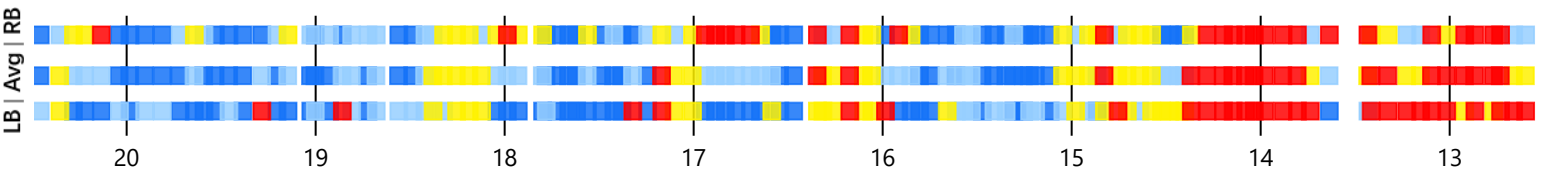
Aggradation/Incision

■ Aggradation ▲ Incision



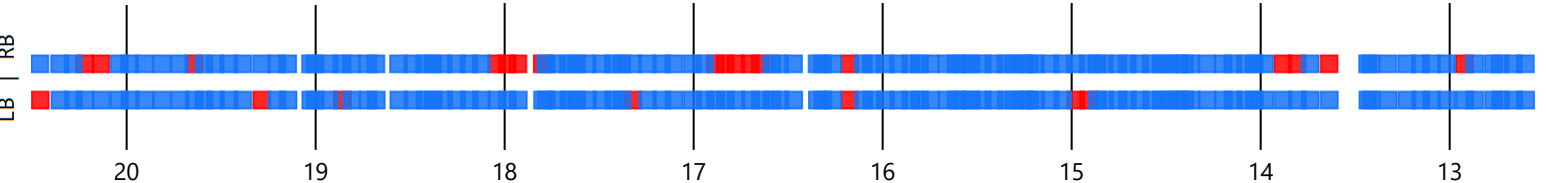
Bank Stability

Score ■ Excellent ■ Good ■ Mediocre ■ Poor



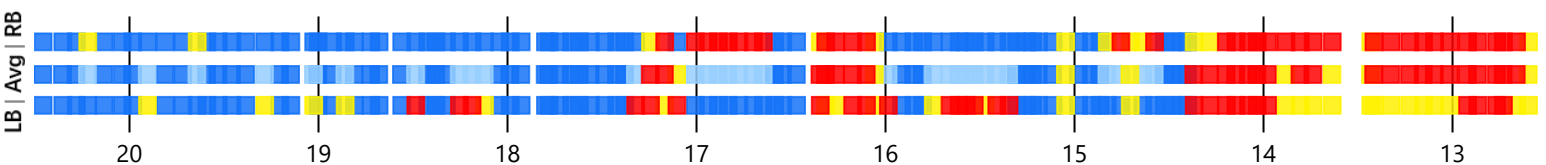
Bank Condition

■ Hardened Structure ■ Natural



Riparian Zone

Score ■ Excellent ■ Good ■ Mediocre ■ Poor



← FLOW DIRECTION Creek Mile (20.45 at Tailwater, 12.59 at Headwater) FLOW DIRECTION →

REACH A

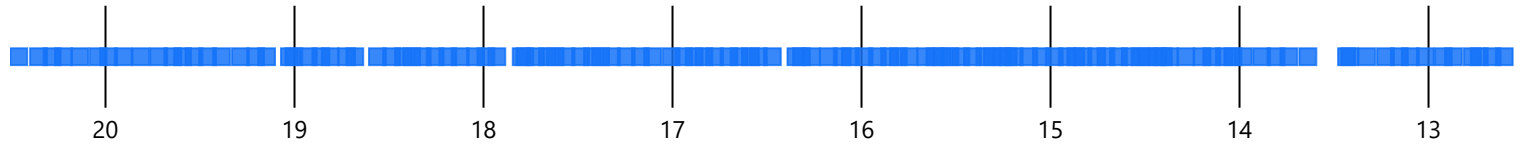
Water Appearance

Score ■ Excellent



Nutrient Enrichment

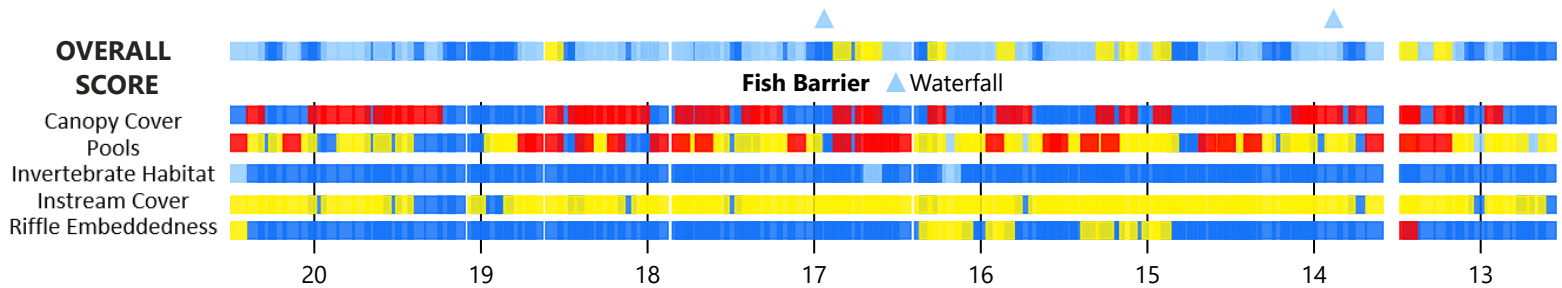
■ Low



Fish Habitat

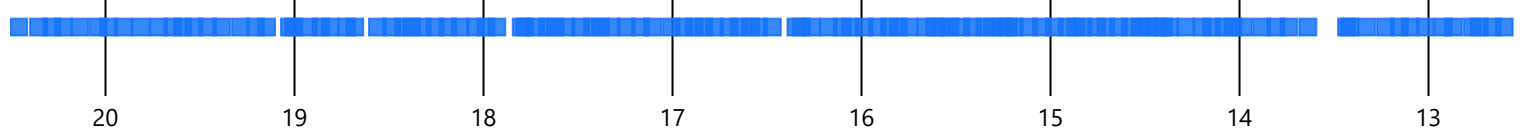
Score ■ Excellent ■ Good ■ Mediocre ■ Poor

Note: Overall Score of Fish Habitat was calculated by averaging scores for the five variables shown below.



Manure Presence

■ None



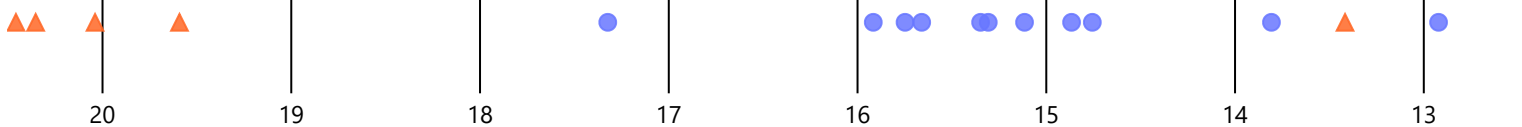
Invasive Species

● Japanese Knotweed



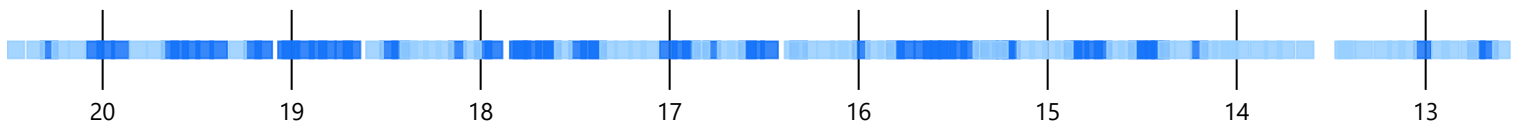
Aquatic Vegetation

■ Both ▲ Emergent ● Submerged



OVERALL SVAP RATING

Score ■ Excellent ■ Good

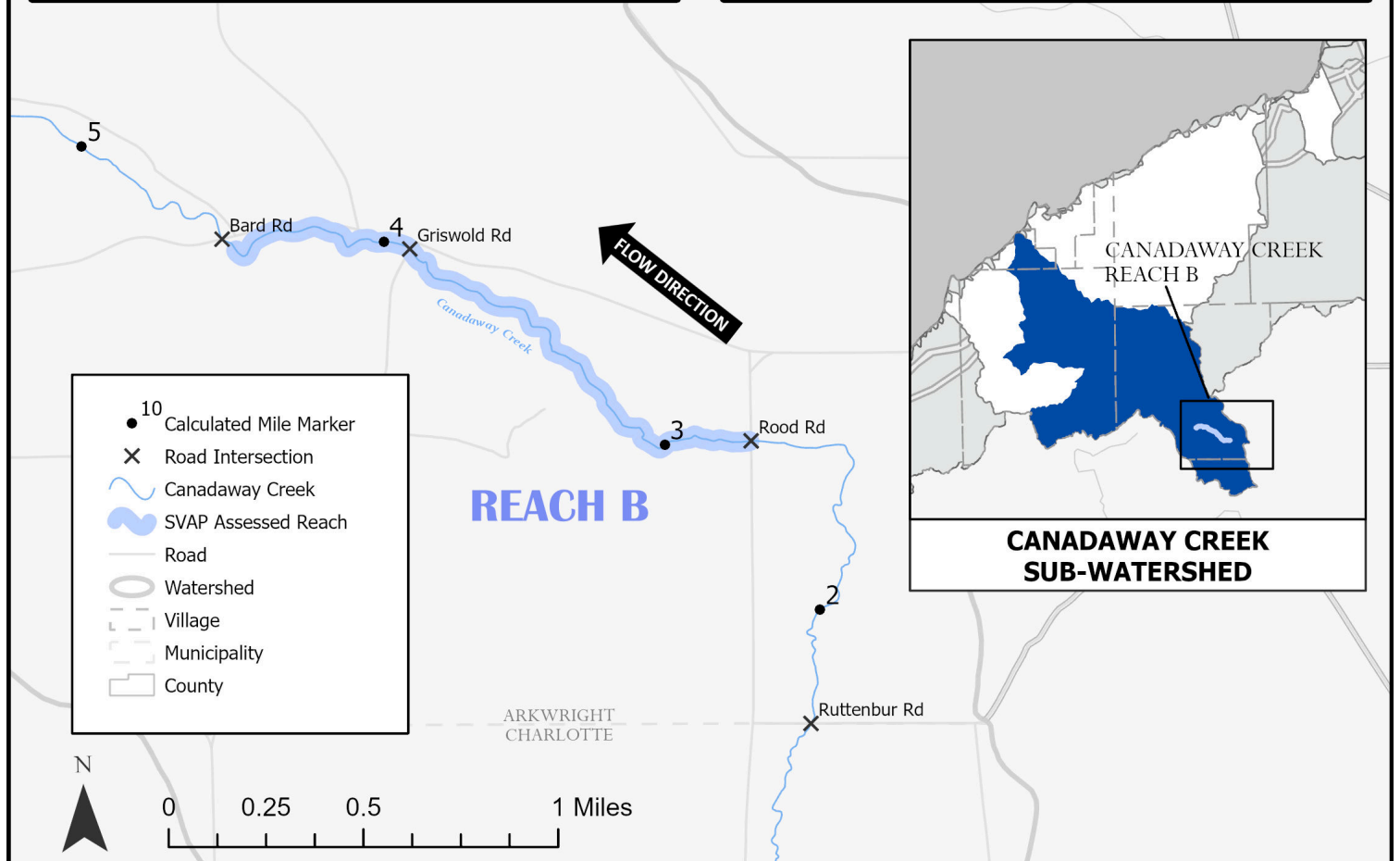


← FLOW DIRECTION Creek Mile (20.45 at Tailwater, 12.59 at Headwater) FLOW DIRECTION →

CANADAWAY CREEK

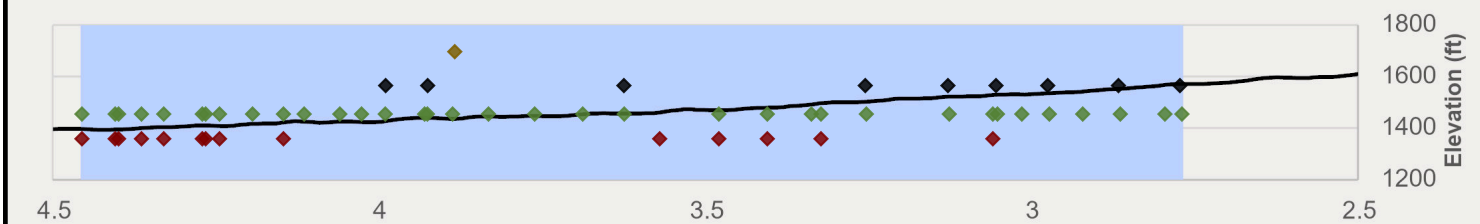
STREAM VISUAL ASSESSMENT PROTOCOL (SVAP) RESULTS
FOR REACH B

AVERAGE OVERALL SVAP RATING: **6.6**



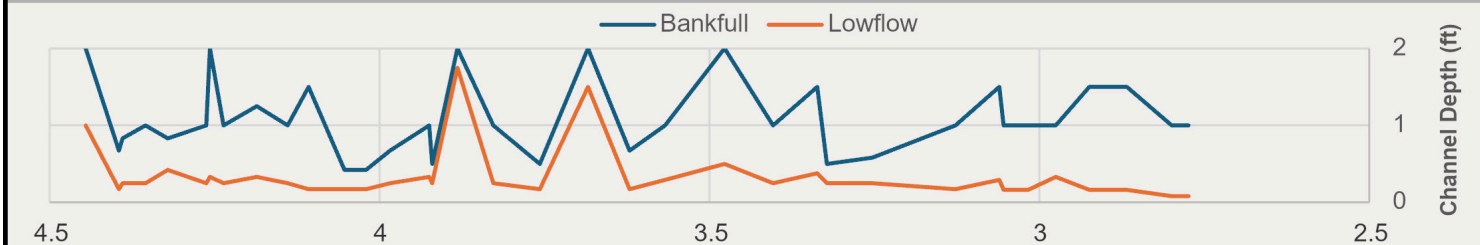
Elevation Profile

Substrate ◆ Concrete ◆ Boulder ◆ Cobble ◆ Gravel

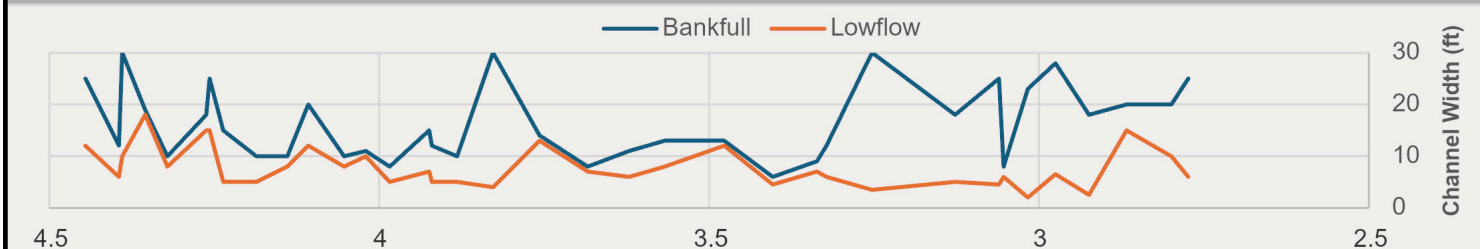


REACH B

Channel Depth



Channel Width



← FLOW DIRECTION

Creek Mile (4.45 at Tailwater, 2.77 at Headwater)

← FLOW DIRECTION

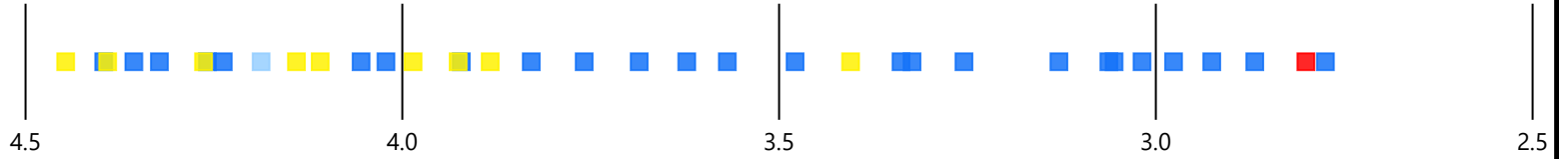
Classification Scheme for SVAP Parameters

Color Classification				
SVAP Score (0-10)	0 - 2.5	2.6 - 5	5.1 - 7.5	7.6 - 10

REACH B

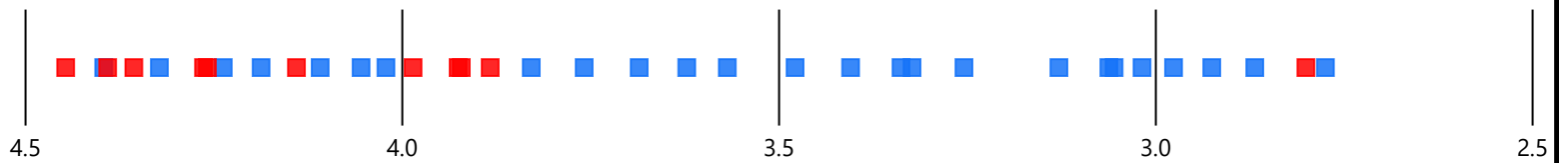
Channel Conditions

Score ■ Excellent ■ Good ■ Mediocre ■ Poor



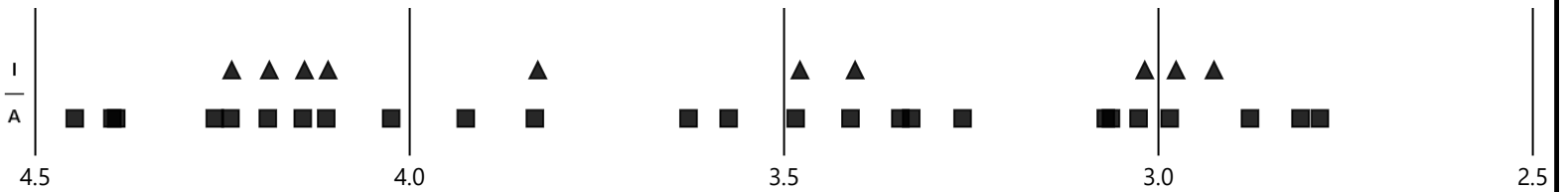
Stream Bank Hardening

■ No ■ Yes



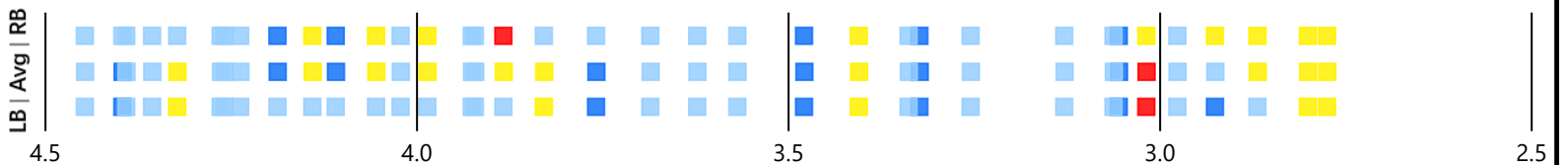
Aggradation/Incision

■ Aggradation ▲ Incision



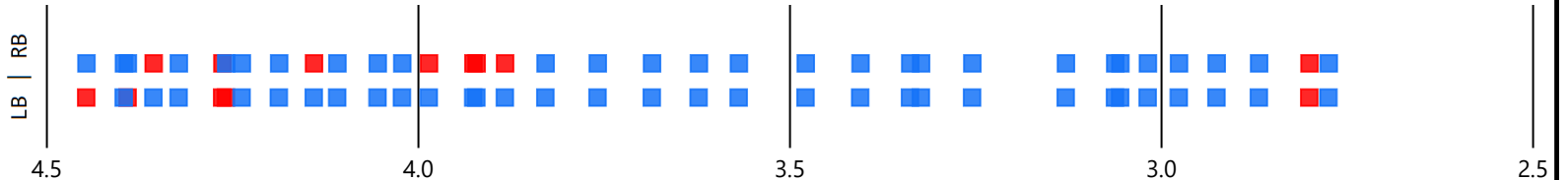
Bank Stability

Score ■ Excellent ■ Good ■ Mediocre ■ Poor



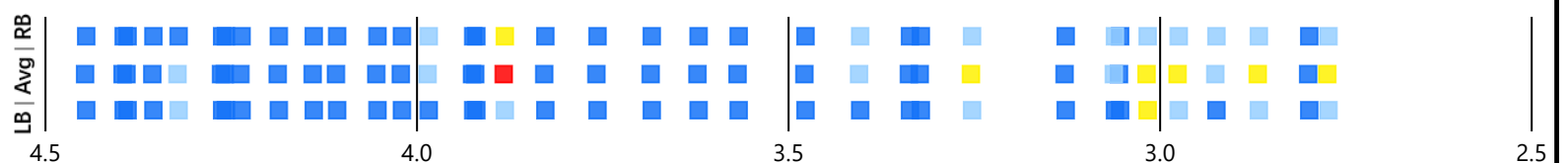
Bank Condition

■ Hardened Structure ■ Natural



Riparian Zone

Score ■ Excellent ■ Good ■ Mediocre ■ Poor



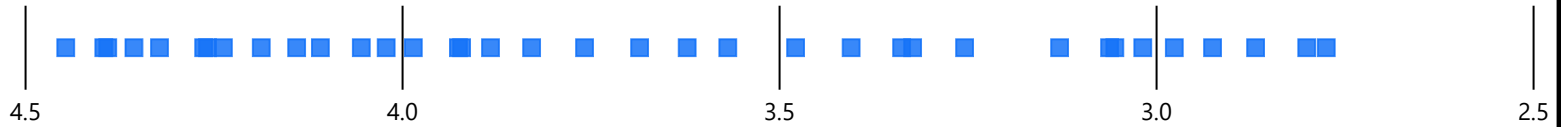
Creek Mile (4.45 at Tailwater, 2.77 at Headwater)



REACH B

Water Appearance

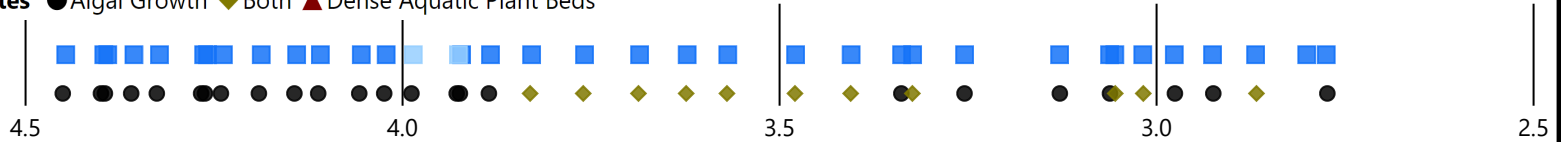
Score ■ Excellent



Nutrient Enrichment

Score ■ Low ■ Mild

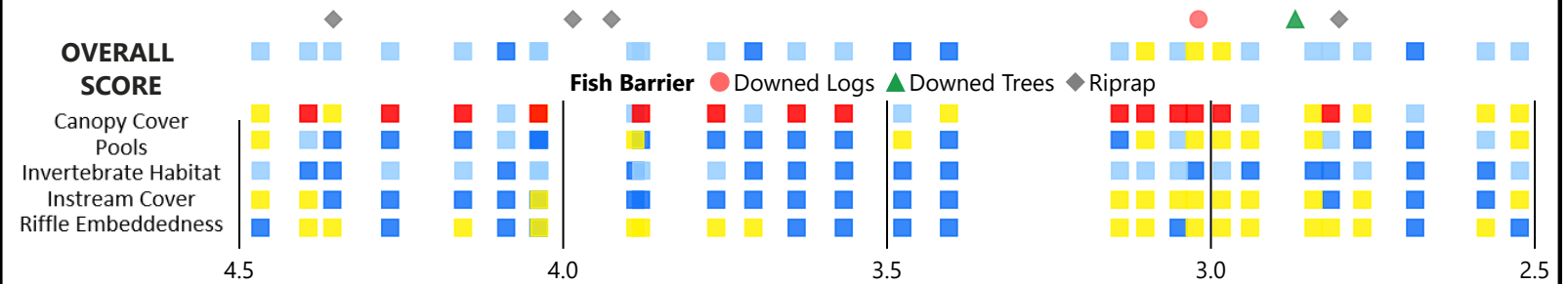
Notes ● Algal Growth ◆ Both ▲ Dense Aquatic Plant Beds



Fish Habitat

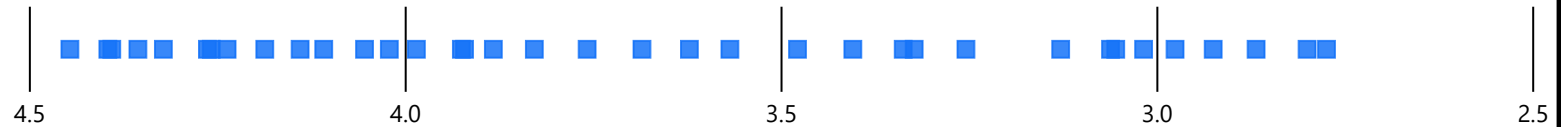
Score ■ Excellent ■ Good ■ Mediocre ■ Poor

Note: Overall Score of Fish Habitat was calculated by averaging scores for the five variables shown below.



Manure Presence

■ None



Invasive Species

● Japanese Knotweed ◆ Mugwort ■ Multiflora Rose ▲ Phragmites



Aquatic Vegetation

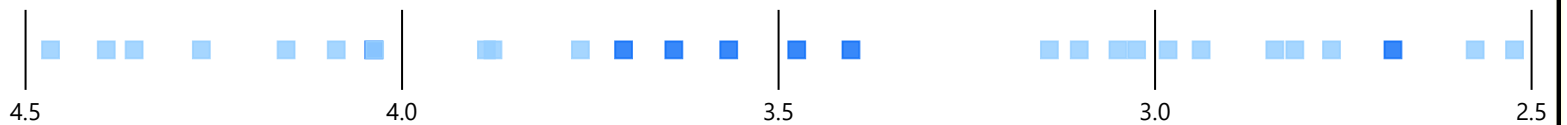
■ Both ▲ Emergent ● Submerged



OVERALL SVAP RATING

CANADAWAY CREEK REACH B

Score ■ Excellent ■ Good ■ Mediocre



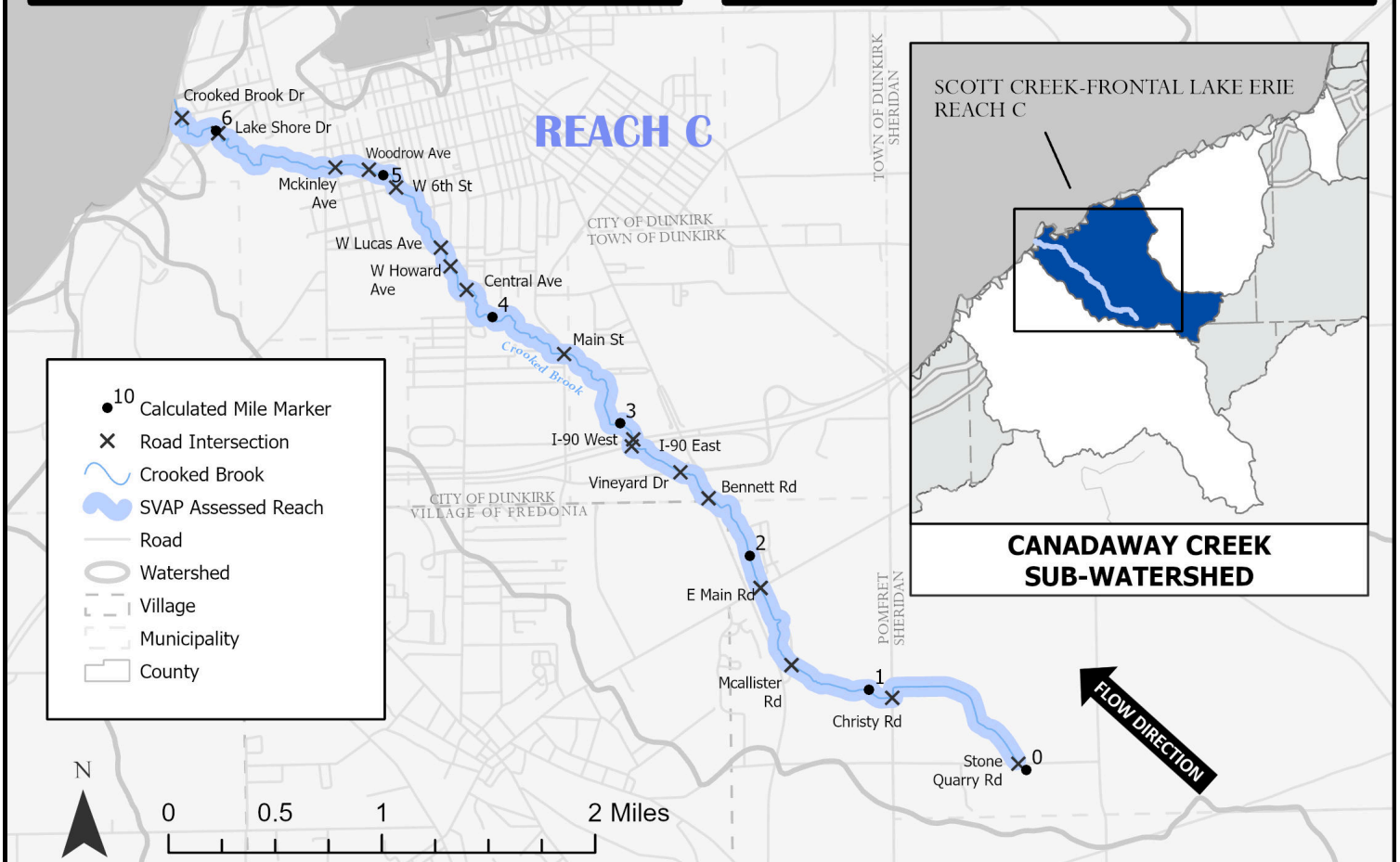
Creek Mile (4.45 at Tailwater, 2.77 at Headwater)



CROOKED BROOK

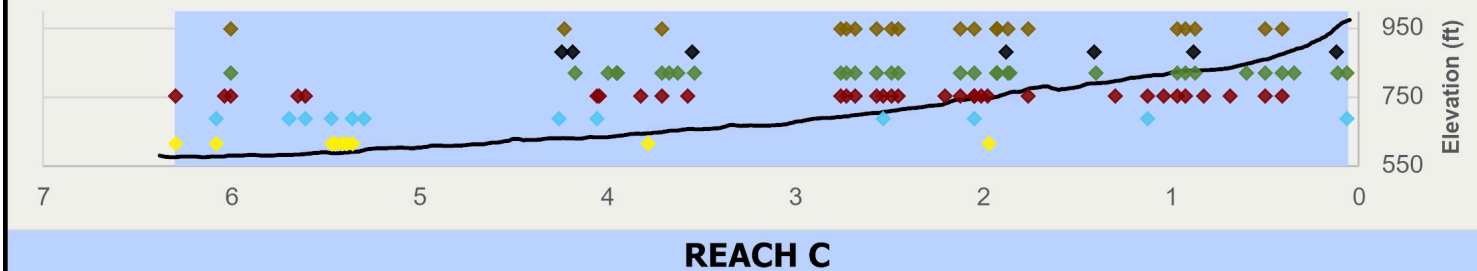
STREAM VISUAL ASSESSMENT PROTOCOL (SVAP) RESULTS
FOR REACH C

AVERAGE OVERALL SVAP RATING: **5.2**

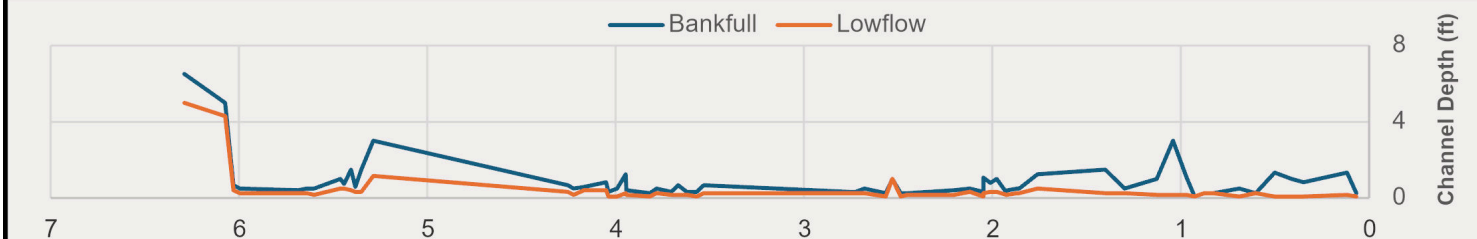


Elevation Profile

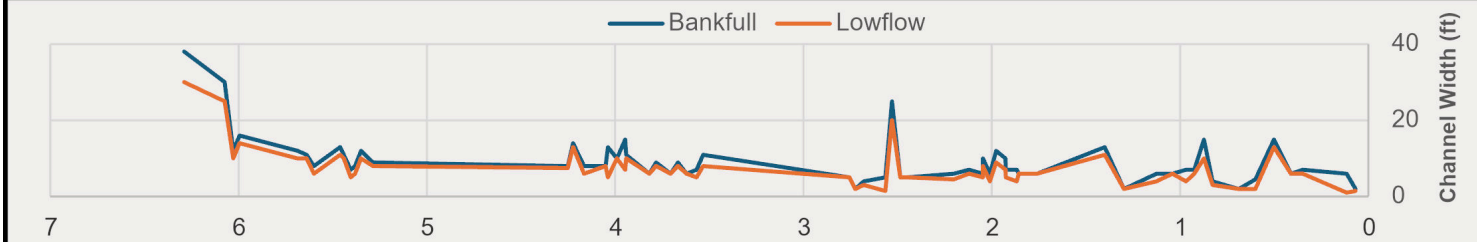
Substrate ♦ Concrete ♦ Boulder ♦ Cobble ♦ Gravel ♦ Sand ♦ Silt/Clay



Channel Depth



Channel Width



← FLOW DIRECTION

Creek Mile (6.29 at Tailwater, 0.07 at Headwater)

← FLOW DIRECTION

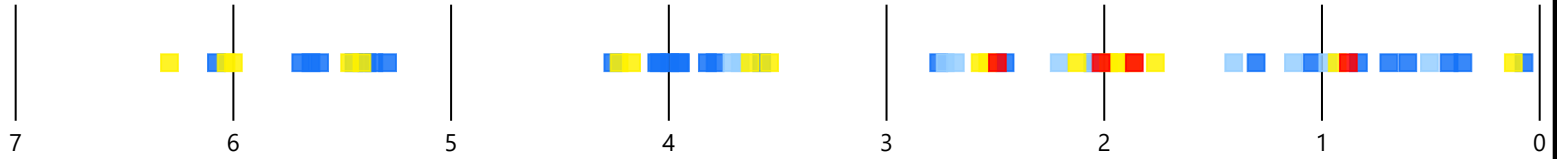
Classification Scheme for SVAP Parameters

Color Classification				
SVAP Score (0-10)	0 - 2.5	2.6 - 5	5.1 - 7.5	7.6 - 10

REACH C

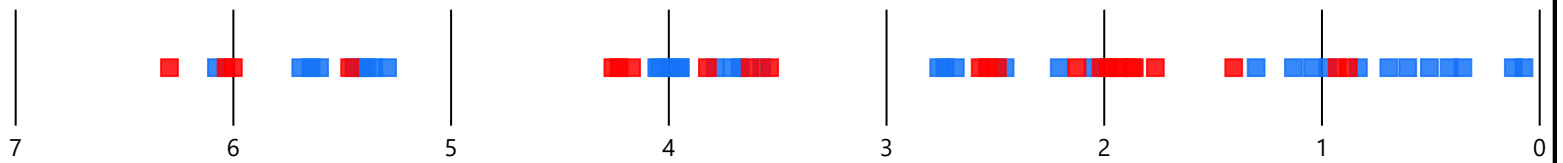
Channel Conditions

Score ■ Excellent ■ Good ■ Mediocre ■ Poor



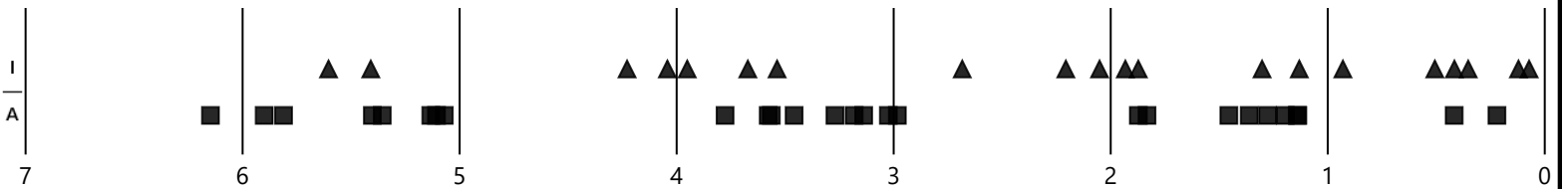
Stream Bank Hardening

■ No ■ Yes



Aggradation/Incision

■ Aggradation ▲ Incision



Bank Stability

Score ■ Excellent ■ Good ■ Mediocre ■ Poor



Bank Condition

■ Hardened Structure ■ Natural



Riparian Zone

Score ■ Excellent ■ Good ■ Mediocre ■ Poor



Creek Mile (6.29 at Tailwater, 0.07 at Headwater)



REACH C

Water Appearance

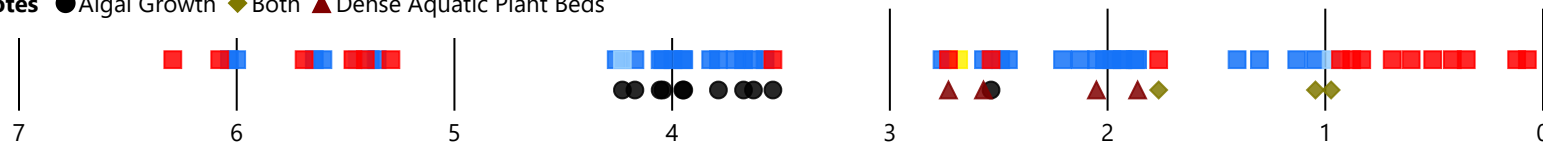
Score ■ Excellent ■ Good ■ Mediocre ■ Poor



Nutrient Enrichment

■ Low ■ Mild ■ Moderate ■ Severe

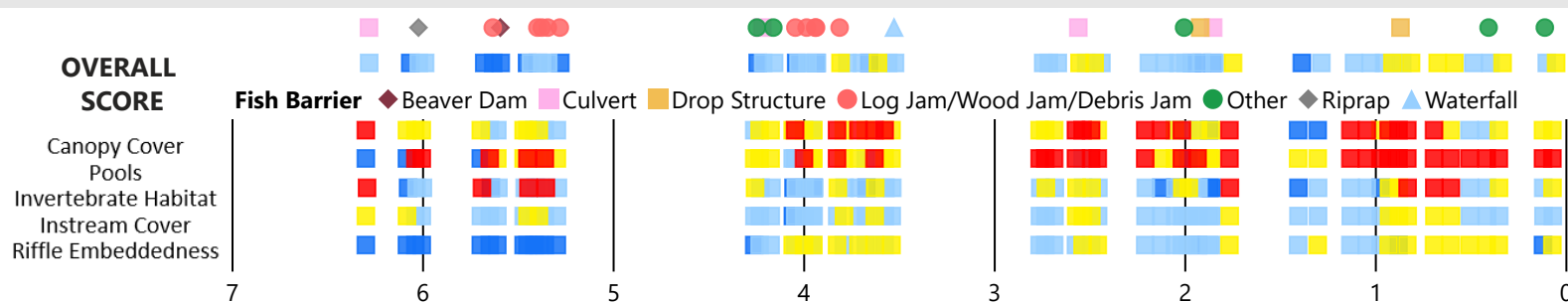
Notes ● Algal Growth ◆ Both ▲ Dense Aquatic Plant Beds



Fish Habitat

Score ■ Excellent ■ Good ■ Mediocre ■ Poor

Note: Overall Score of Fish Habitat was calculated by averaging scores for the five variables shown below.



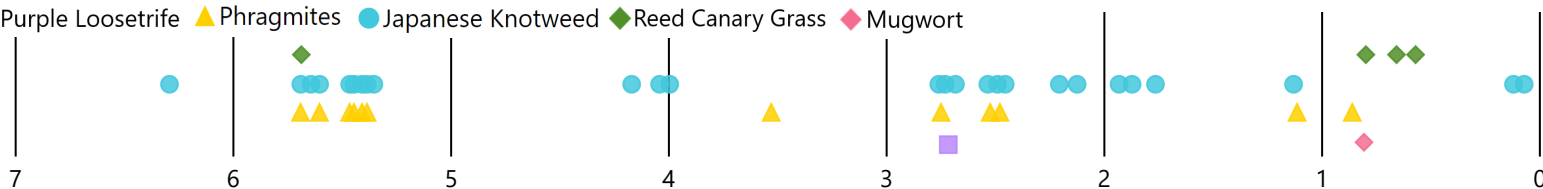
Manure Presence

■ None



Invasive Species

■ Purple Loosestrife ▲ Phragmites ● Japanese Knotweed ◆ Reed Canary Grass ◆ Mugwort



Aquatic Vegetation

■ Both ▲ Emergent ● Submerged



OVERALL SVAP RATING

CROOKED BROOK

Score ■ Excellent ■ Good ■ Mediocre ■ Poor



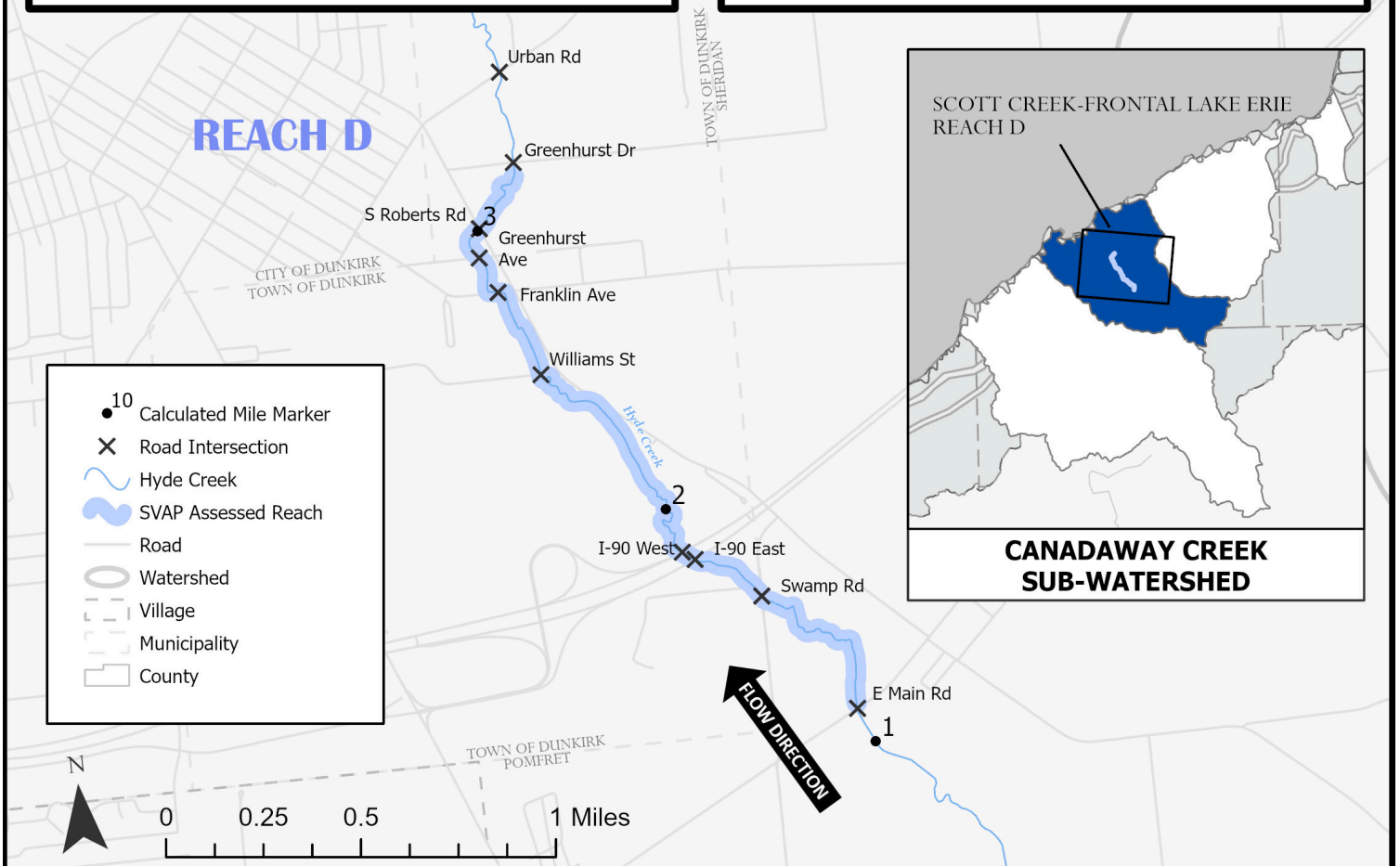
Creek Mile (6.29 at Tailwater, 0.07 at Headwater)



HYDE CREEK

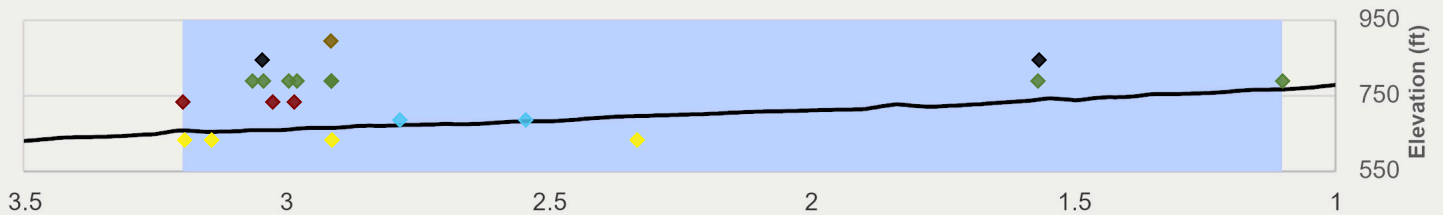
STREAM VISUAL ASSESSMENT PROTOCOL (SVAP) RESULTS
FOR REACH D

AVERAGE OVERALL SVAP RATING: **5.7**



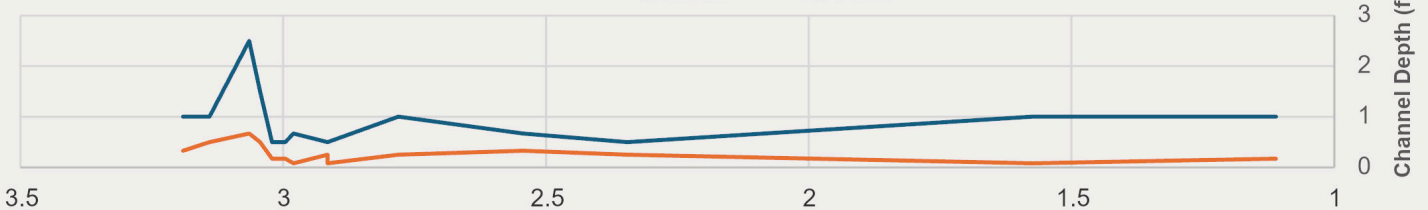
Elevation Profile

Substrate ◆ Bedrock ◆ Boulder ◆ Cobble ◆ Gravel ◆ Sand ◆ Silt/Clay



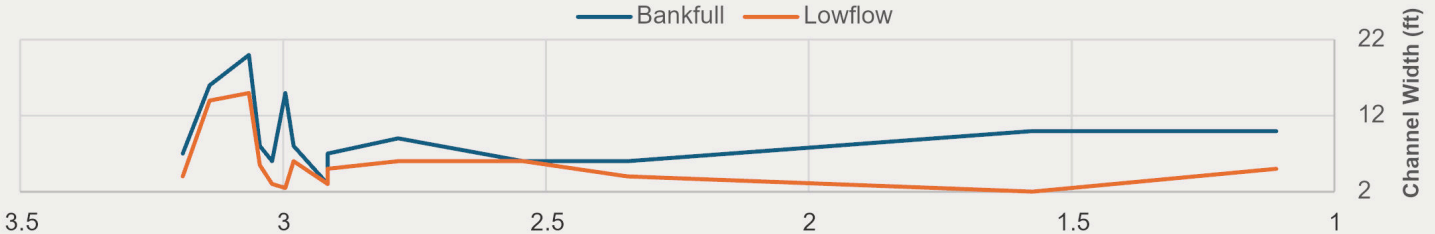
Channel Depth

— Bankfull — Lowflow



Channel Width

— Bankfull — Lowflow



← FLOW DIRECTION

Creek Mile (3.19 at Tailwater, 1.11 at Headwater)

← FLOW DIRECTION

Classification Scheme for SVAP Parameters

Color Classification				
SVAP Score (0-10)	0 - 2.5	2.6 - 5	5.1 - 7.5	7.6 - 10

REACH D

Channel Conditions

Score ■ Excellent ■ Good ■ Mediocre



Stream Bank Hardening

☐ No ☐ Yes



Aggradation/Incision

■ Aggradation ▲ Incision



Bank Stability

Score ■ Excellent ■ Good ■ Mediocre ■ Poor



Bank Condition

■ Hardened Structure ■ Natural



Riparian Zone

Score ■ Excellent ■ Good ■ Mediocre ■ Poor



Creek Mile (3.19 at Tailwater, 1.11 at Headwater)

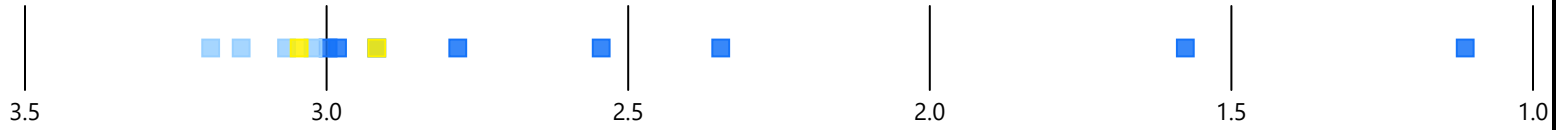


FLOW DIRECTION

REACH D

Water Appearance

Score ■ Excellent ■ Good ■ Mediocre



Nutrient Enrichment

■ Low ■ Mild ■ Severe

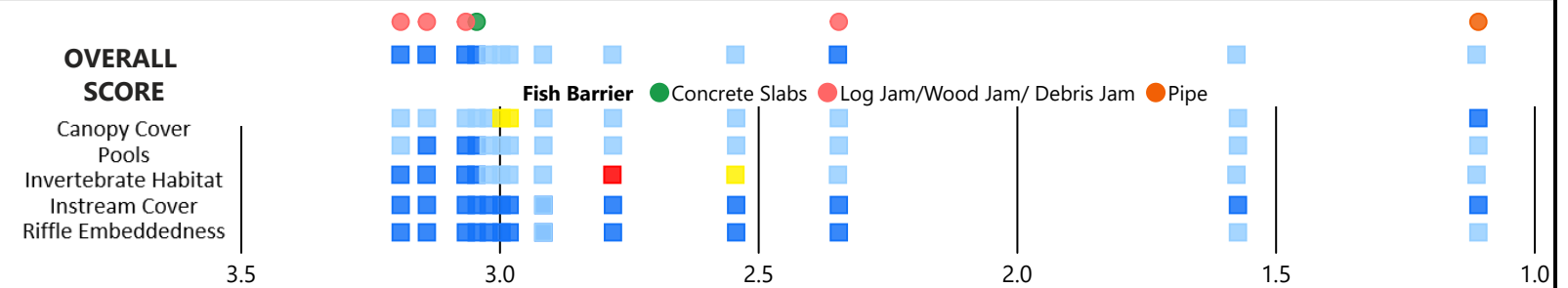
Notes ● Algal Growth ◆ Both ▲ Dense Aquatic Plant Beds



Fish Habitat

Score ■ Excellent ■ Good ■ Mediocre ■ Poor

Note: Overall Score of Fish Habitat was calculated by averaging scores for the five variables shown below.



Manure Presence

■ None



Invasive Species

● Japanese Knotweed



Aquatic Vegetation

■ Both ▲ Emergent ● Submerged



OVERALL SVAP RATING

HYDE CREEK

Score ■ Good ■ Mediocre



← FLOW DIRECTION

Creek Mile (3.19 at Tailwater, 1.11 at Headwater)

← FLOW DIRECTION