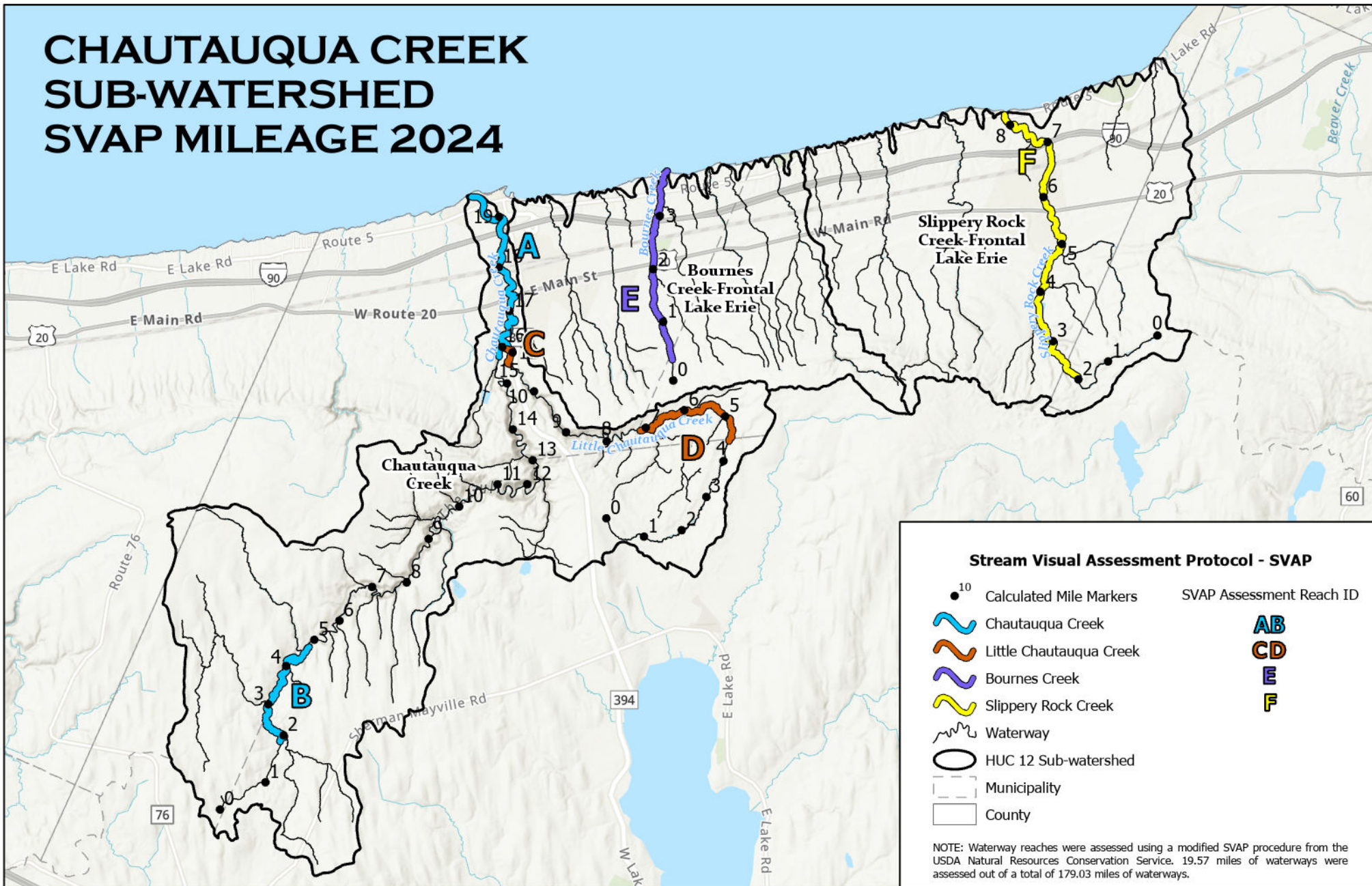


CHAUTAUQUA CREEK SUB-WATERSHED SVAP MILEAGE 2024



**Department
of State**

This map was prepared with funding
provided by the New York State
Department of State under Title 11 of the
Environmental Protection Fund.

Esri, NASA, NGA, USGS/Esri, Airbus DS, N Robinson,
NCEAS, NLS, OS, NMA, Geodata stylisen,
Rijkswaterstaat, GSA, Geoland, FEMA, Intermap and the
GIS user community



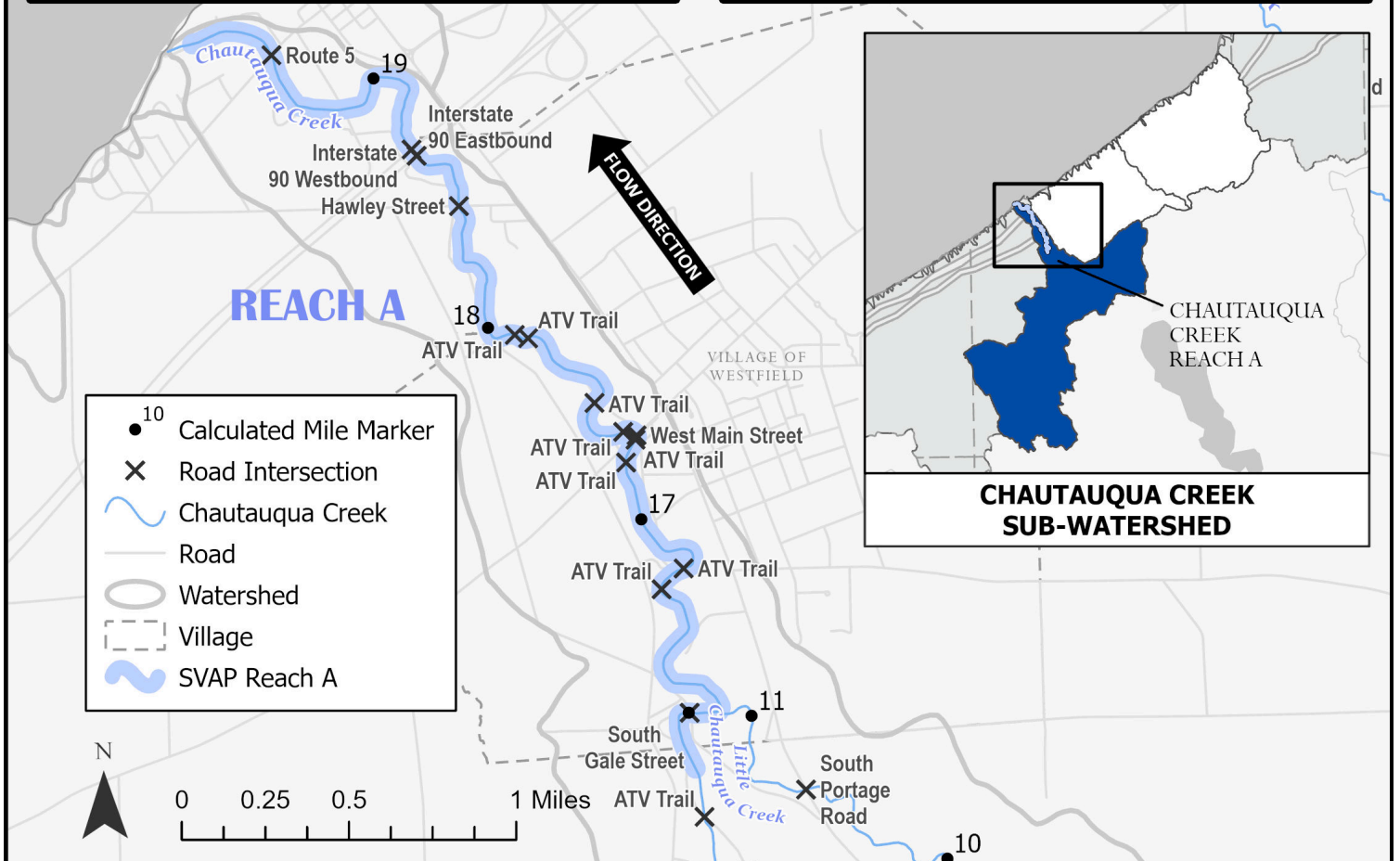
0 1 2 4 Miles



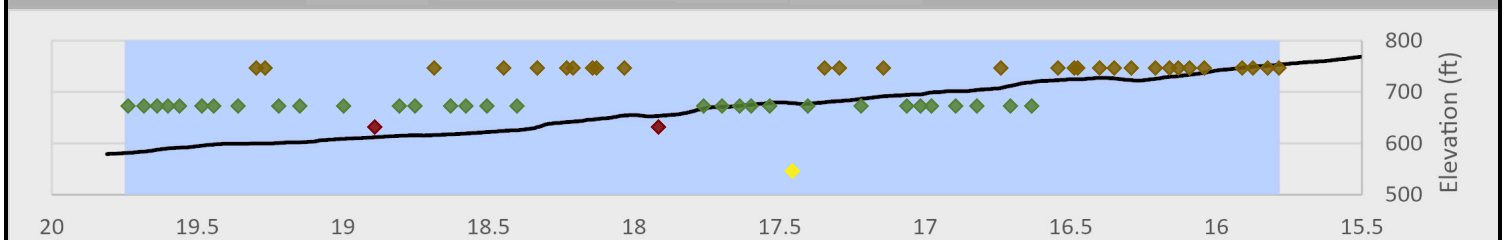
CHAUTAUQUA CREEK

STREAM VISUAL ASSESSMENT PROTOCOL (SVAP) RESULTS
FOR REACH A

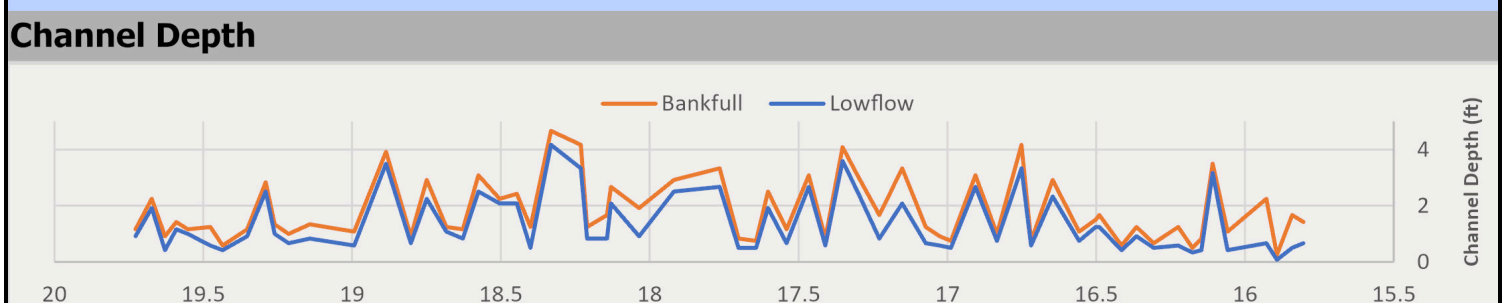
AVERAGE OVERALL SVAP RATING: **6.8**



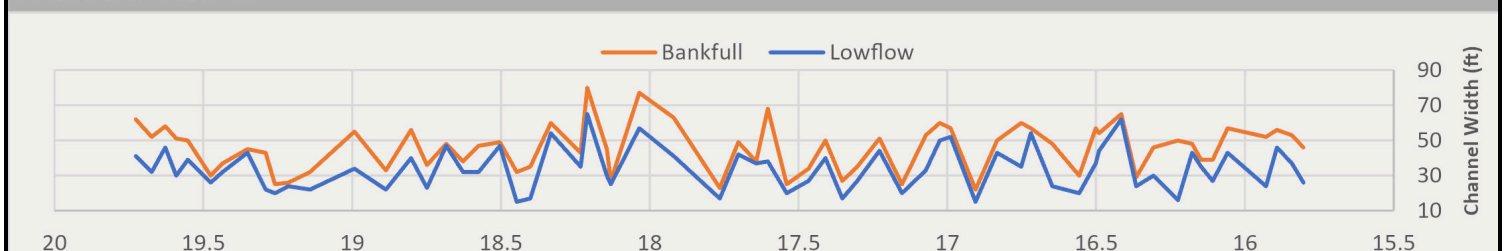
Elevation Profile Substrate



Channel Depth



Channel Width



← FLOW DIRECTION

Creek Mile (19.73 at Tailwater, 15.8 at Headwater)

← FLOW DIRECTION

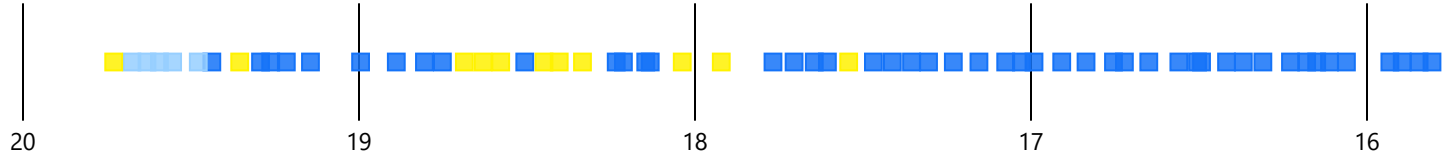
Classification Scheme for SVAP Parameters

Color Classification				
SVAP Score (0-10)	0 - 2.5	2.6 - 5	5.1 - 7.5	7.6 - 10

REACH A

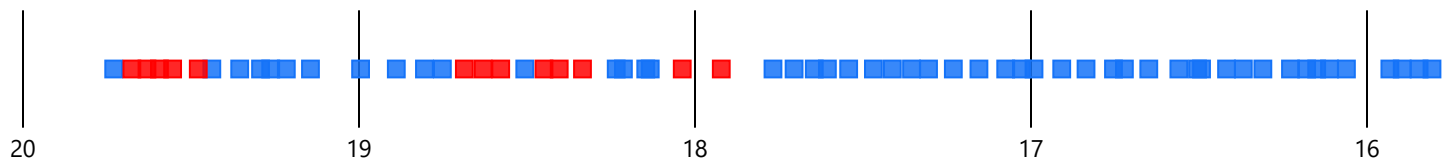
Channel Conditions

Score ■ Excellent ■ Good ■ Mediocre



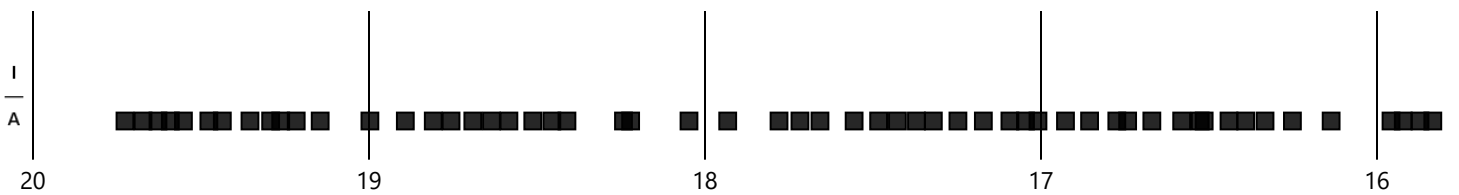
Stream Bank Hardening

■ No ■ Yes



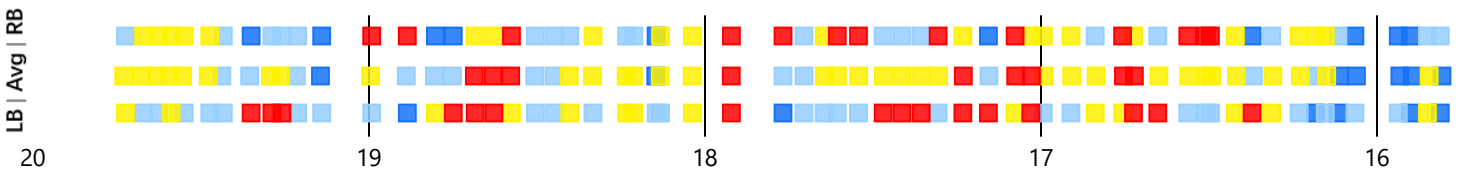
Aggradation/Incision

■ Aggradation ▲ Incision



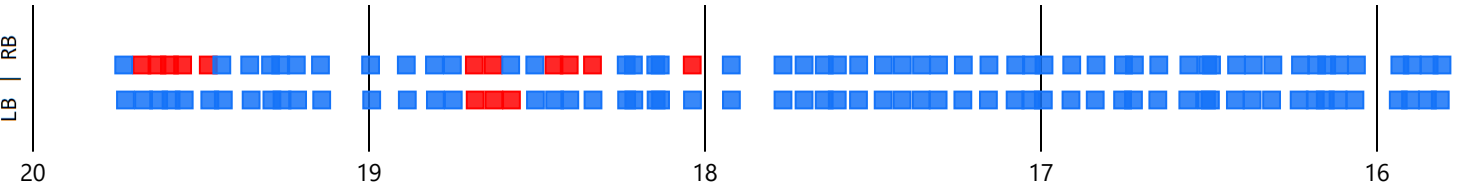
Bank Stability

Score ■ Excellent ■ Good ■ Mediocre ■ Poor



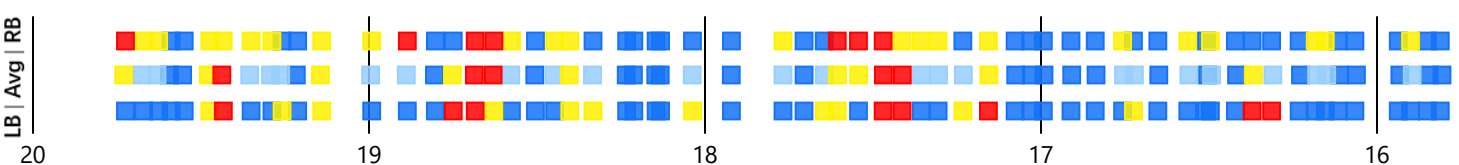
Bank Condition

■ Hardened Structure ■ Natural



Riparian Zone

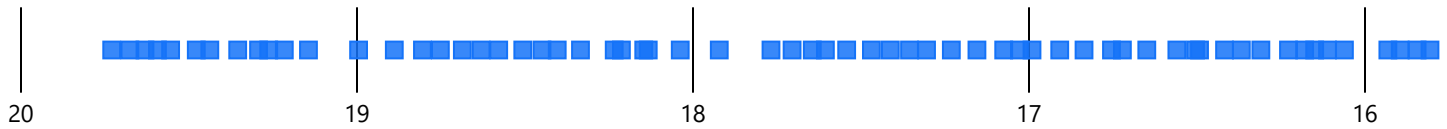
Score ■ Excellent ■ Good ■ Mediocre ■ Poor



REACH A

Water Appearance

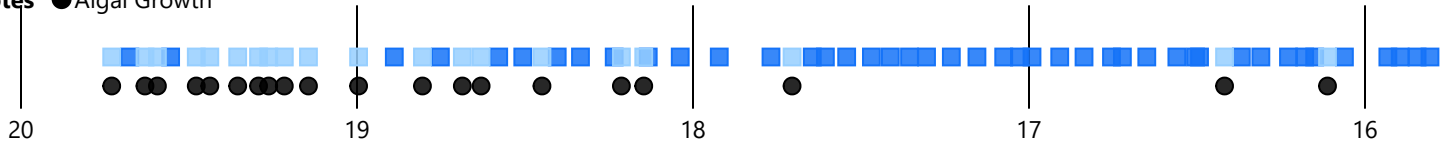
Score ■ Excellent



Nutrient Enrichment

■ Low ■ Mild

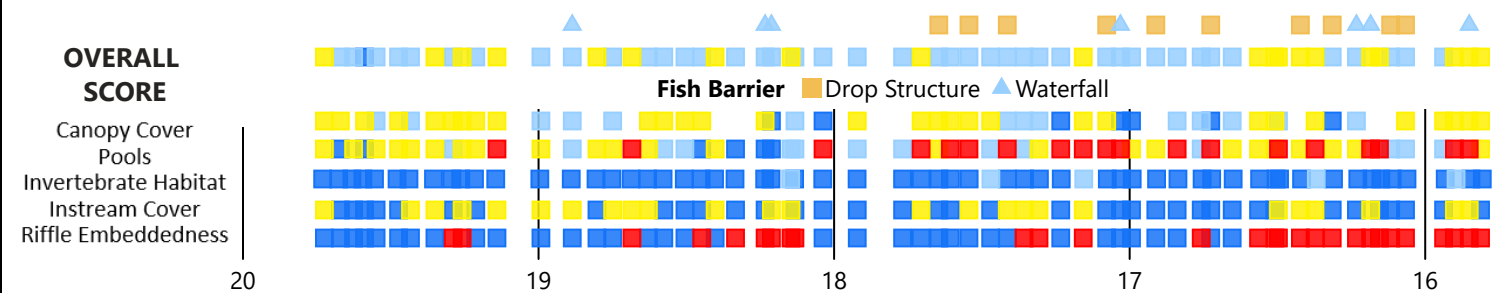
Notes ● Algal Growth



Fish Habitat

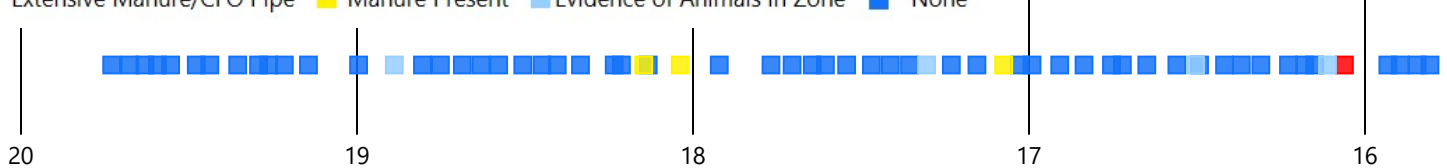
Score ■ Excellent ■ Good ■ Mediocre ■ Poor

Note: Overall Score of Fish Habitat was calculated by averaging scores for the five variables shown below.



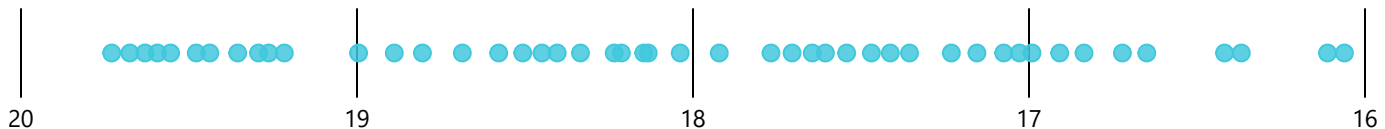
Manure Presence

■ Extensive Manure/CFO Pipe ■ Manure Present ■ Evidence of Animals in Zone ■ None



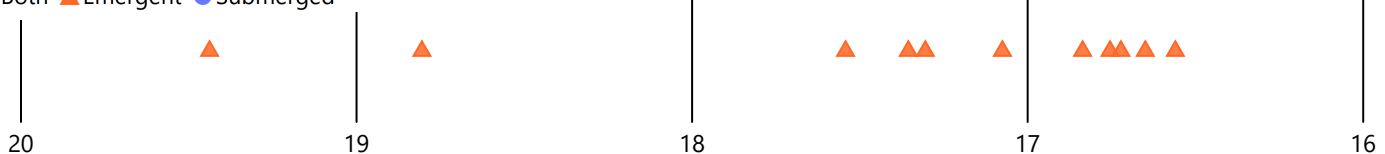
Invasive Species

● Japanese Knotweed



Aquatic Vegetation

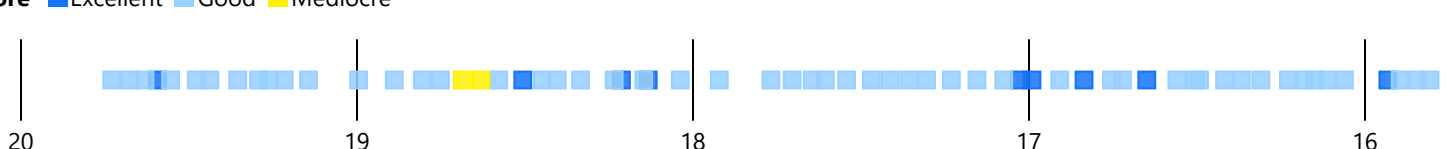
■ Both ▲ Emergent ● Submerged



OVERALL SVAP RATING

CHAUTAUQUA CREEK

Score ■ Excellent ■ Good ■ Mediocre



CHAUTAUQUA CREEK

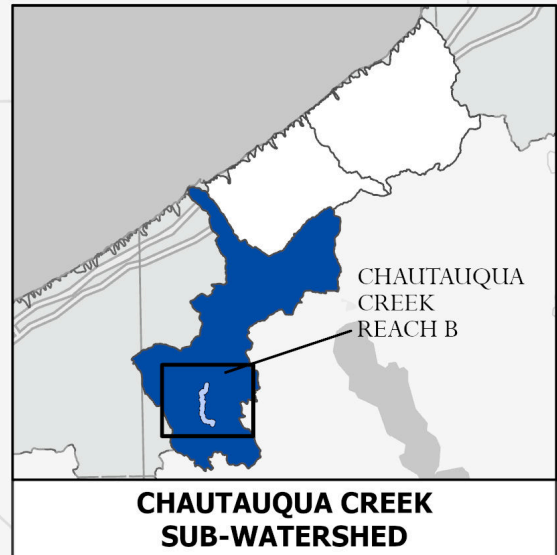
STREAM VISUAL ASSESSMENT PROTOCOL (SVAP) RESULTS
FOR REACH B

AVERAGE OVERALL SVAP RATING: **6.7**

- 10 Calculated Mile Marker
- ✕ Road Intersection
- ~ Chautauqua Creek
- Road
- Watershed
- Municipality
- ~ SVAP Reach B

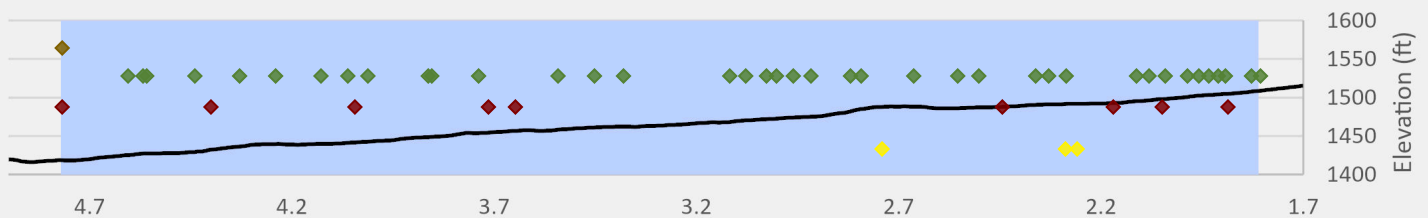


FLOW DIRECTION
↑



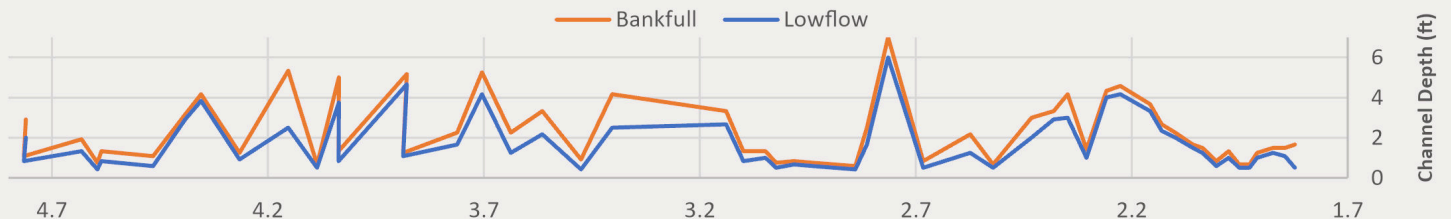
Elevation Profile

Substrate ◆ Bedrock ◆ Cobble ◆ Gravel ◆ Silt/Clay

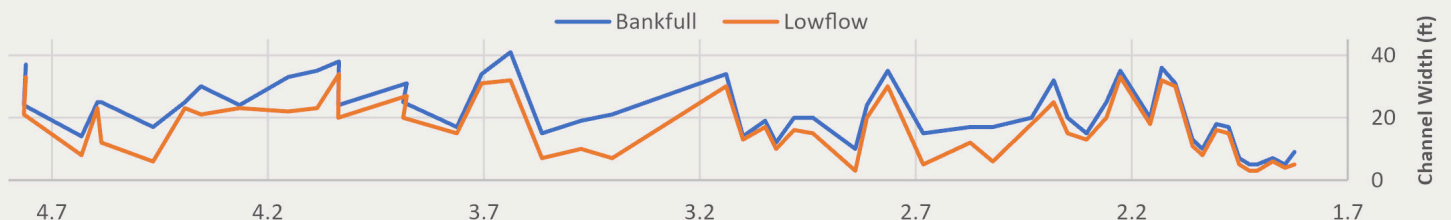


REACH B

Channel Depth



Channel Width



← FLOW DIRECTION

Creek Mile (4.76 at Tailwater, 1.82 at Headwater)

← FLOW DIRECTION

Classification Scheme for SVAP Parameters

Color Classification				
SVAP Score (0-10)	0 - 2.5	2.6 - 5	5.1 - 7.5	7.6 - 10

REACH B

Channel Conditions

Score ■ Excellent ■ Good ■ Mediocre



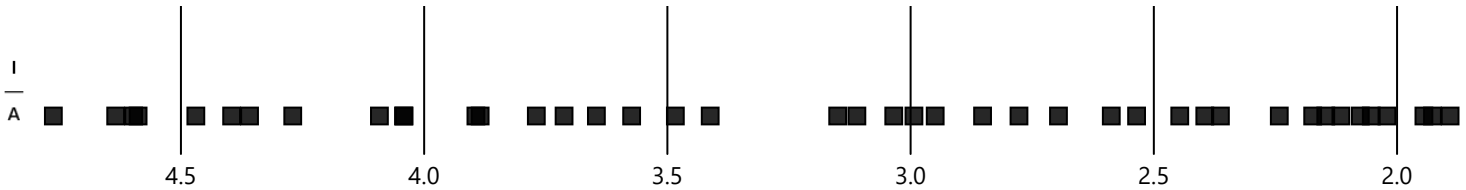
Stream Bank Hardening

■ No ■ Yes



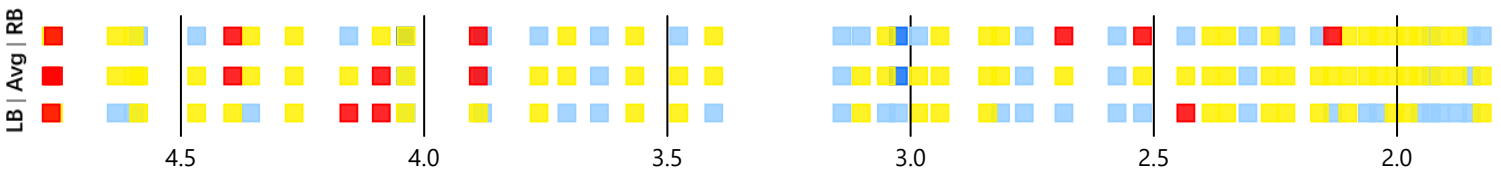
Aggradation/Incision

■ Aggradation ▲ Incision



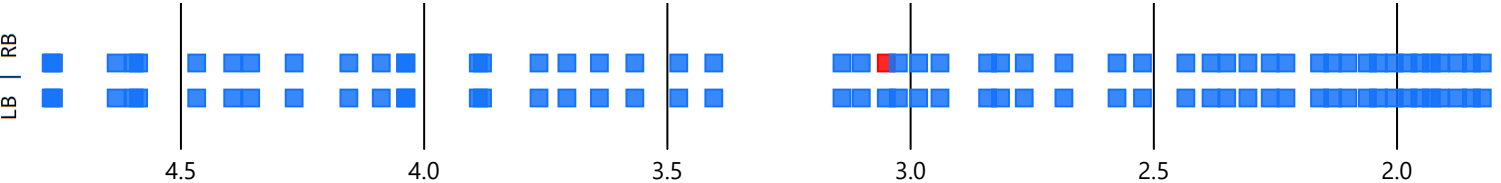
Bank Stability

Score ■ Excellent ■ Good ■ Mediocre ■ Poor



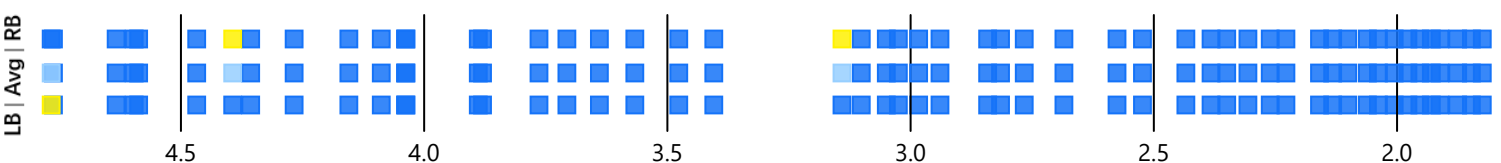
Bank Condition

■ Hardened Structure ■ Natural



Riparian Zone

Score ■ Excellent ■ Good ■ Mediocre ■ Poor



← FLOW DIRECTION

Creek Mile (4.76 at Tailwater, 1.82 at Headwater)

← FLOW DIRECTION

REACH B

Water Appearance

Score ■ Excellent ■ Good ■ Mediocre ■ Poor



Nutrient Enrichment

■ Low ■ Mild ■ Moderate ■ Severe

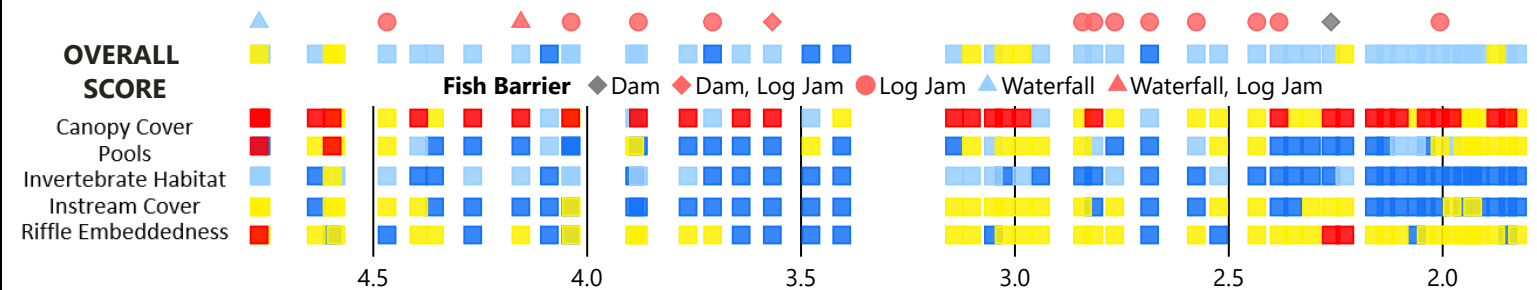
Notes ● Algal Growth



Fish Habitat

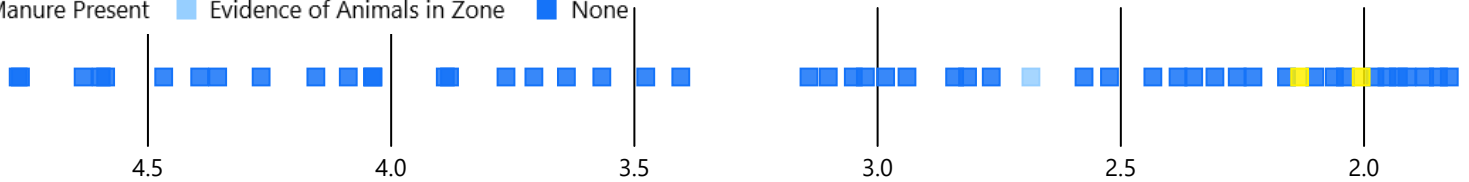
Score ■ Excellent ■ Good ■ Mediocre ■ Poor

Note: Overall Score of Fish Habitat was calculated by averaging scores for the five variables shown below.



Manure Presence

■ Manure Present ■ Evidence of Animals in Zone ■ None



Invasive Species

◆ Angelica



Aquatic Vegetation

■ Both ■ Emergent ■ Submerged



OVERALL SVAP RATING

CHAUTAUQUA CREEK

Score ■ Excellent ■ Good ■ Mediocre



Creek Mile (4.76 at Tailwater, 1.82 at Headwater)

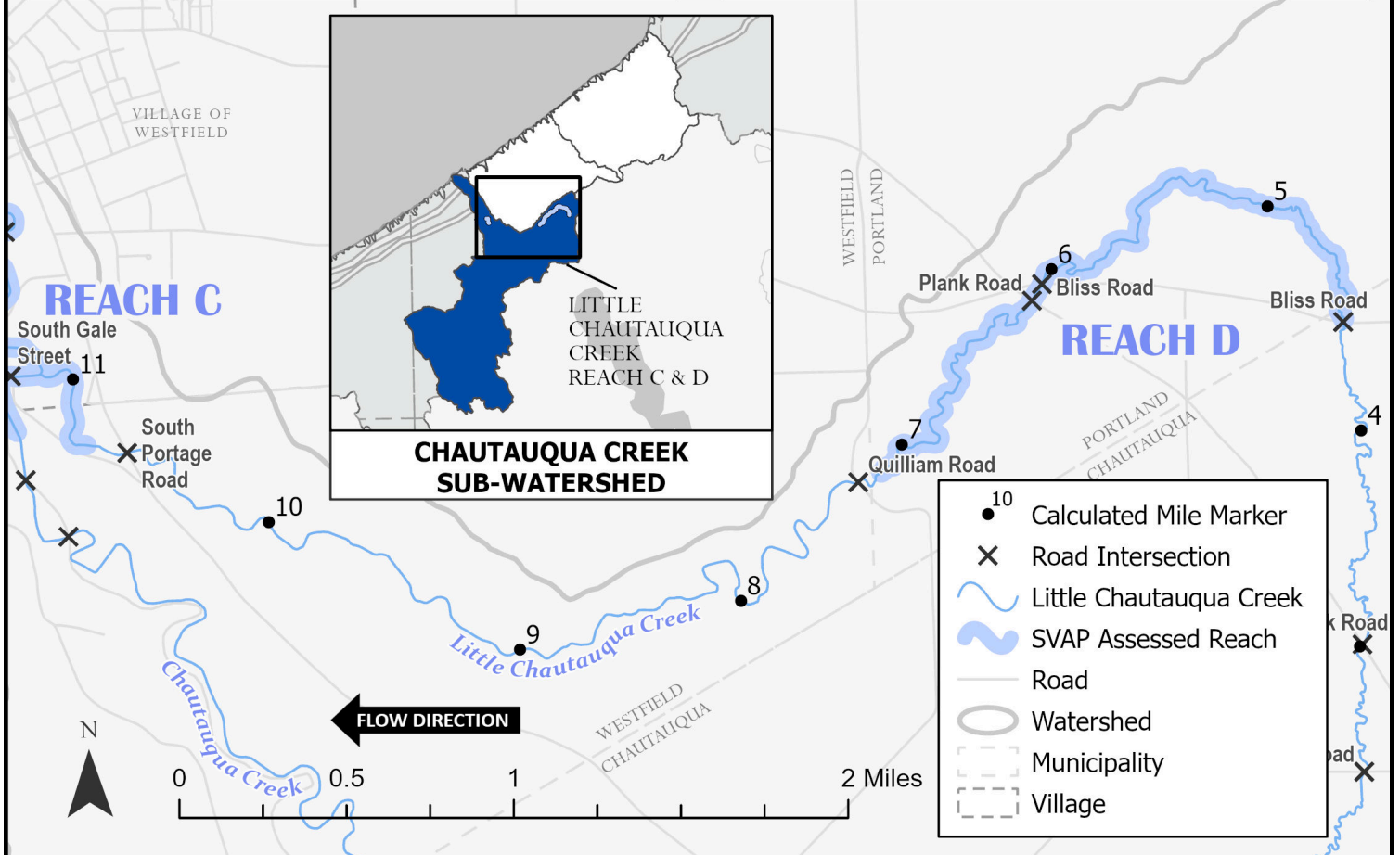


LITTLE CHAUTAUQUA CREEK

STREAM VISUAL ASSESSMENT PROTOCOL (SVAP) RESULTS
FOR REACH C & D

AVERAGE OVERALL SVAP RATING

REACH C: **7.1** REACH D: **7.3**



Elevation Profile

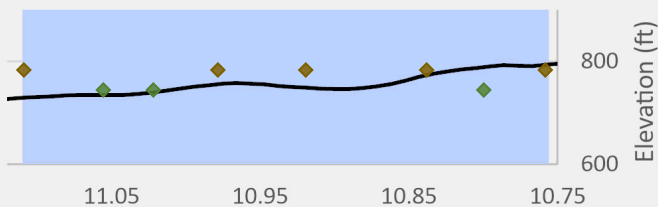
Substrate

Bedrock

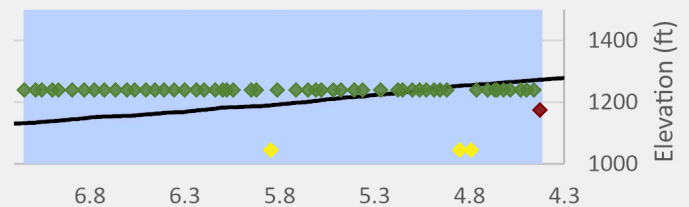
Cobble

Gravel

Silt/Clay



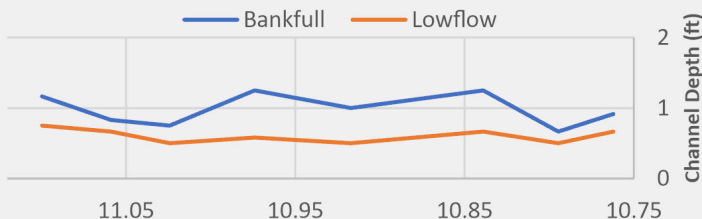
REACH C



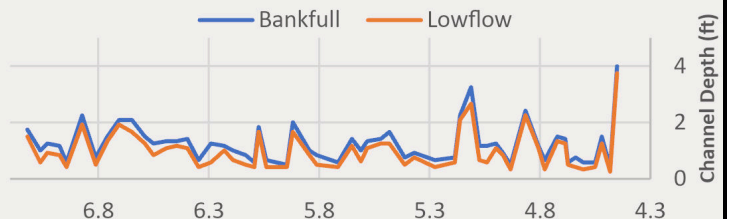
REACH D

Channel Depth

Bankfull Lowflow

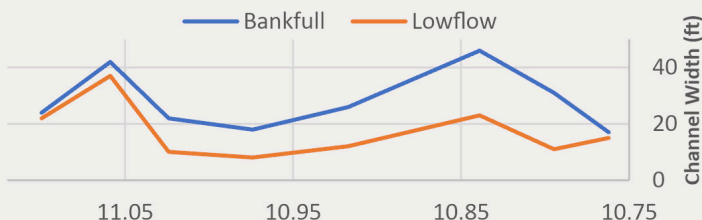


Bankfull Lowflow

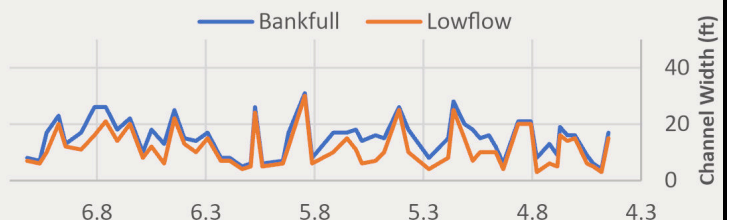


Channel Width

Bankfull Lowflow



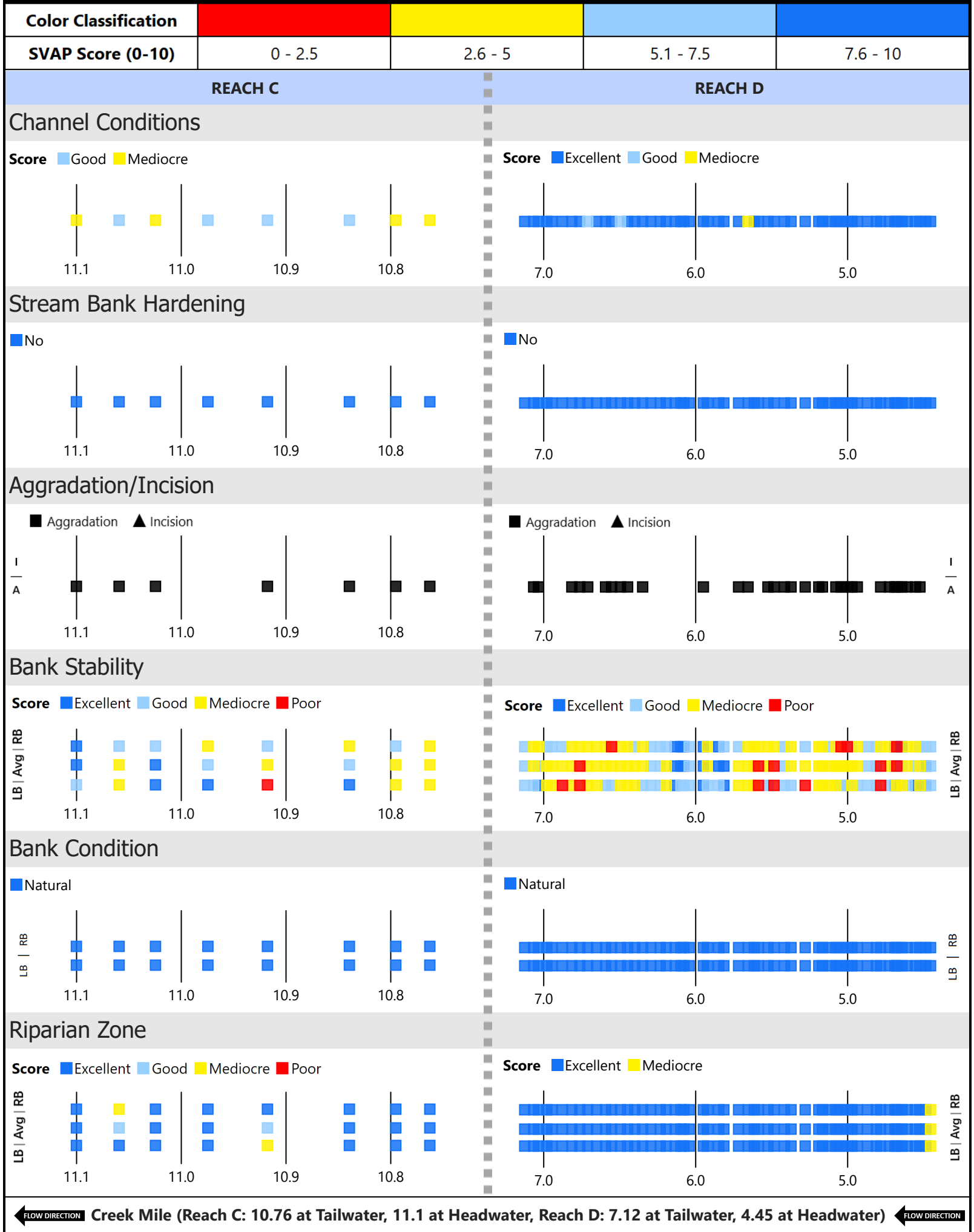
Bankfull Lowflow

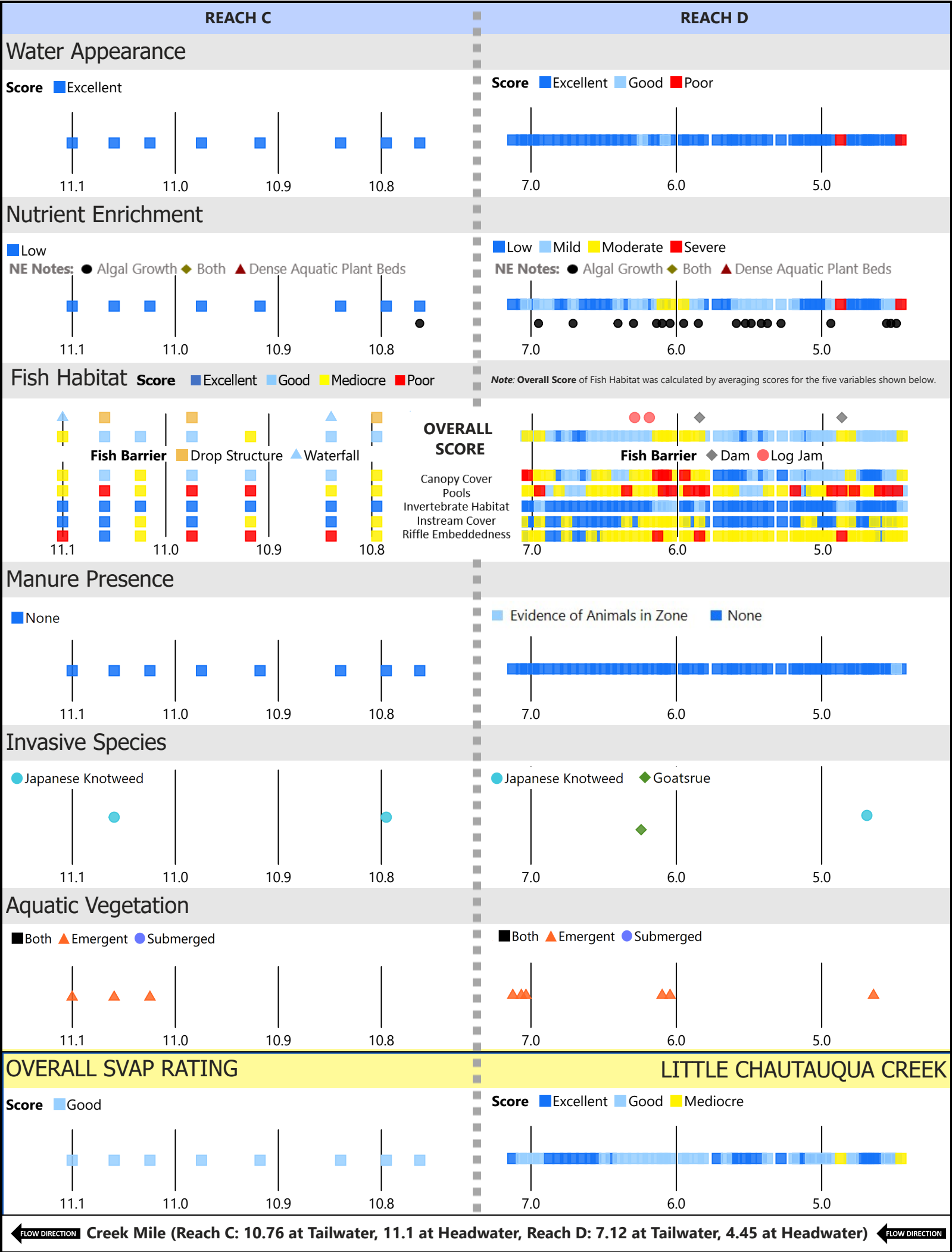


FLOW DIRECTION Creek Mile (Reach C: 11.10 at Tailwater, 10.76 at Headwater; Reach D: 7.12 at Tailwater, 4.45 at Headwater)

FLOW DIRECTION

Classification Scheme for SVAP Parameters

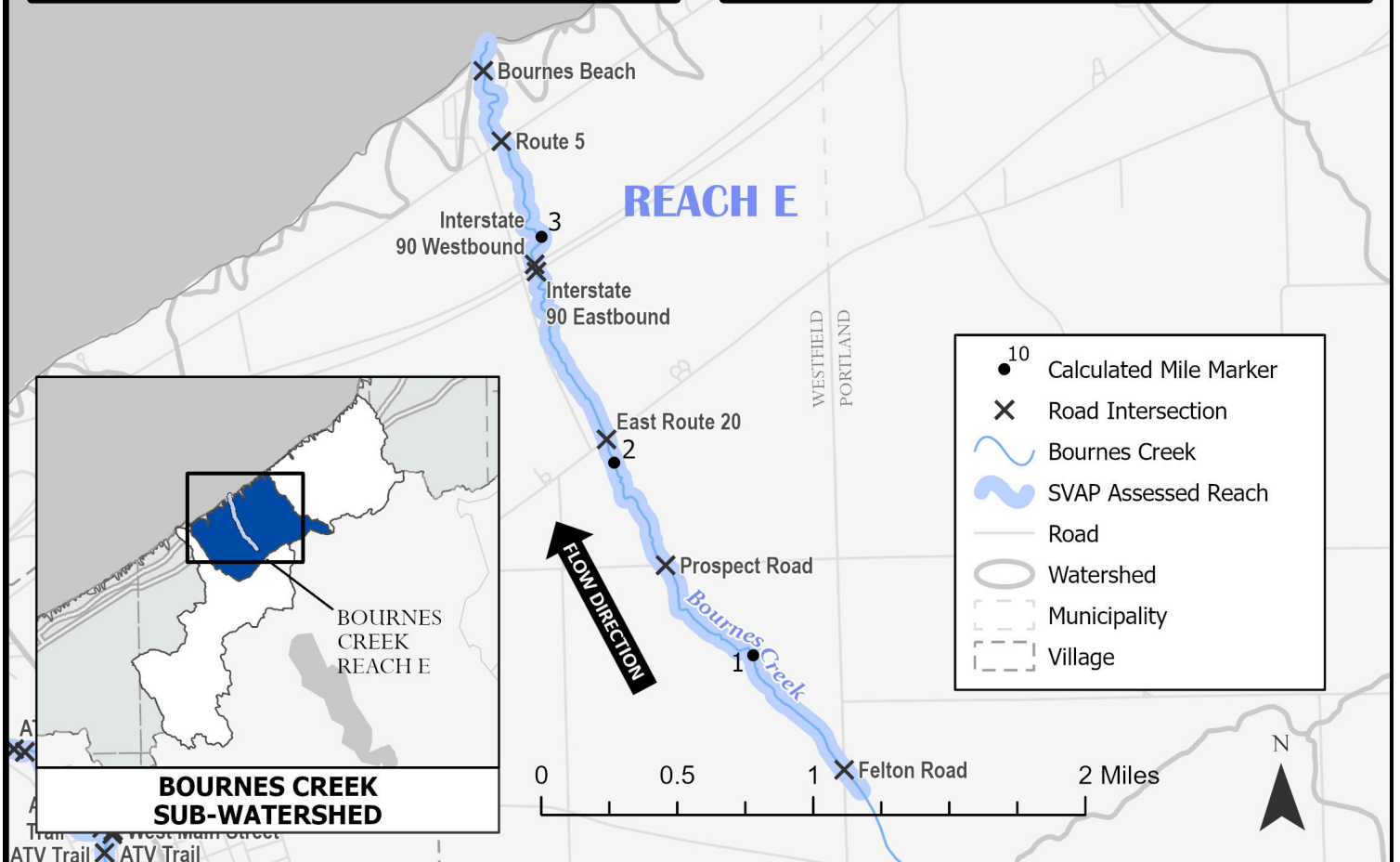




BOURNES CREEK

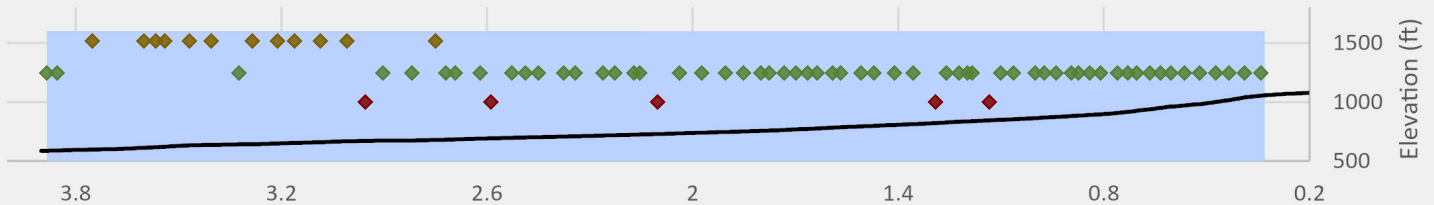
STREAM VISUAL ASSESSMENT PROTOCOL (SVAP) RESULTS
FOR REACH E

AVERAGE OVERALL SVAP RATING: **6.9**



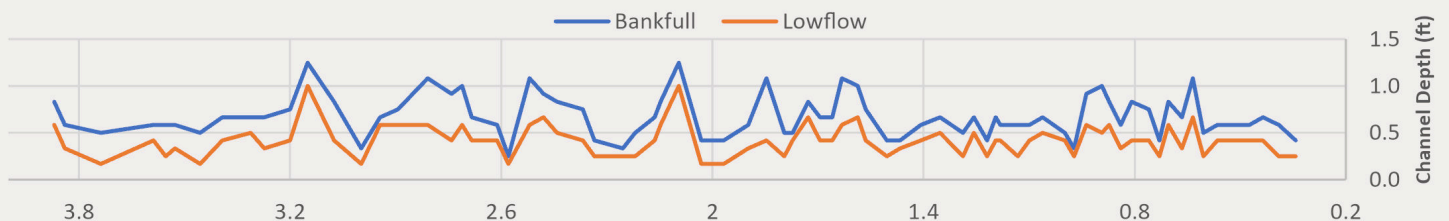
Elevation Profile

Substrate ◆ Bedrock ◆ Cobble ◆ Gravel

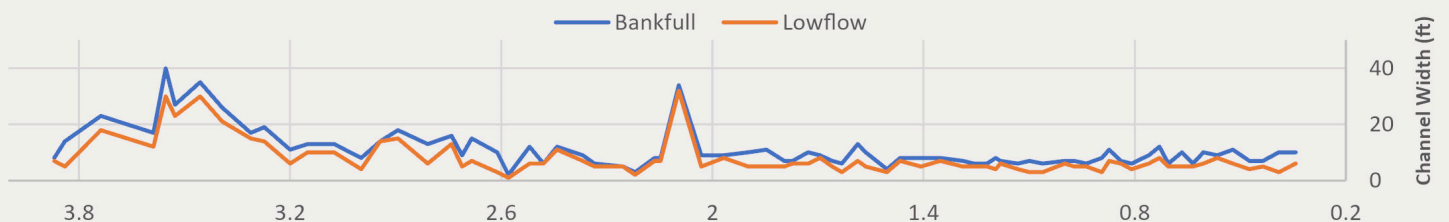


REACH E

Channel Depth



Channel Width



← FLOW DIRECTION

Creek Mile (3.87 at Tailwater, 0.34 at Headwater)

← FLOW DIRECTION

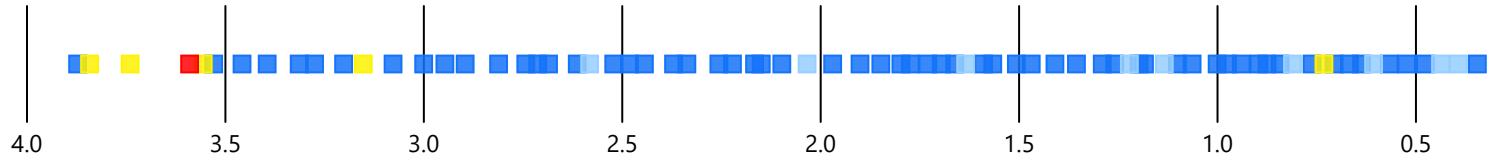
Classification Scheme for SVAP Parameters

Color Classification				
SVAP Score (0-10)	0 - 2.5	2.6 - 5	5.1 - 7.5	7.6 - 10

REACH E

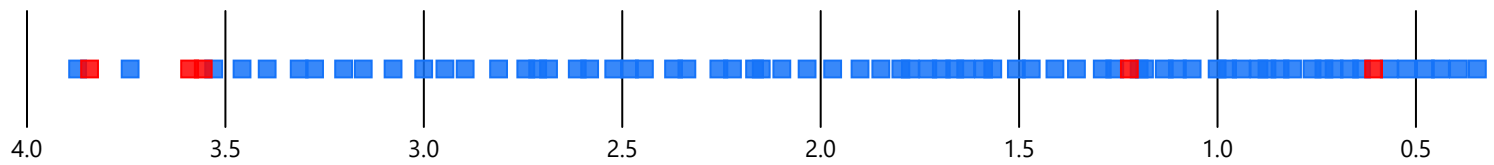
Channel Conditions

Score ■ Excellent ■ Good ■ Mediocre ■ Poor



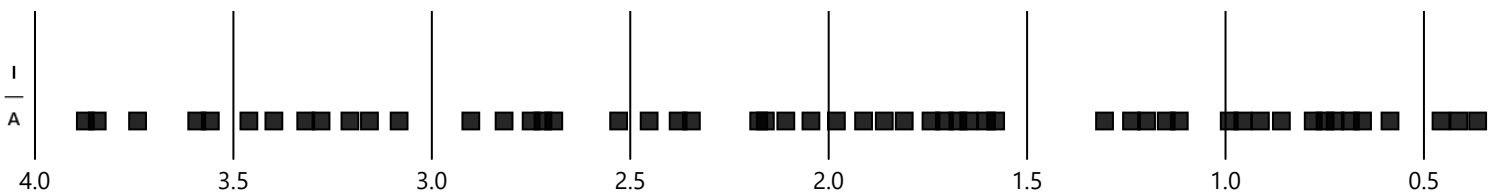
Stream Bank Hardening

■ No ■ Yes



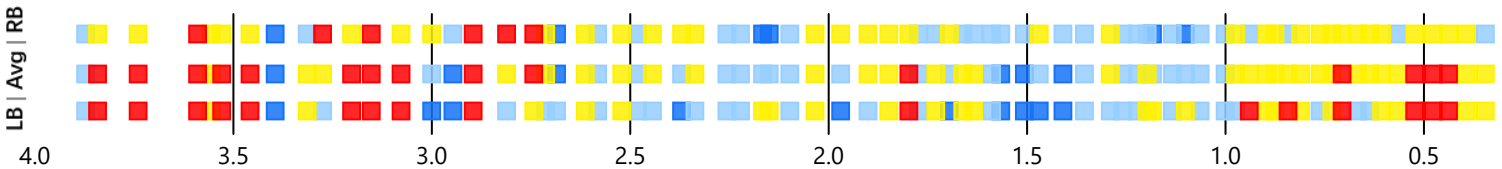
Aggradation/Incision

■ Aggradation ▲ Incision



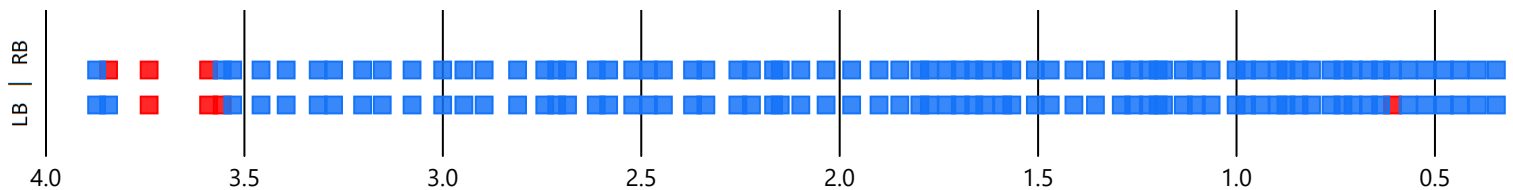
Bank Stability

Score ■ Excellent ■ Good ■ Mediocre ■ Poor



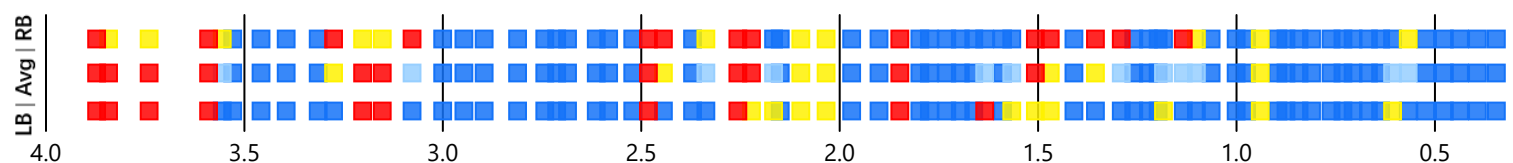
Bank Condition

■ Hardened Structure ■ Natural



Riparian Zone

Score ■ Excellent ■ Good ■ Mediocre ■ Poor



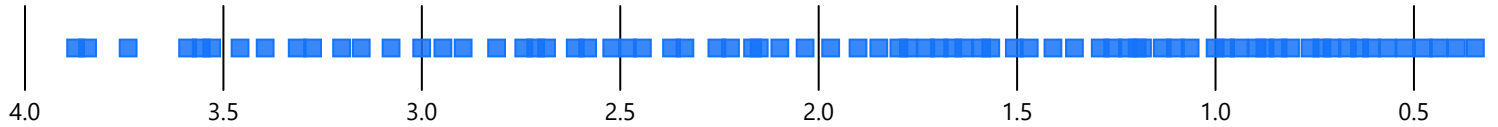
Creek Mile (3.87 at Tailwater, 0.34 at Headwater)



REACH E

Water Appearance

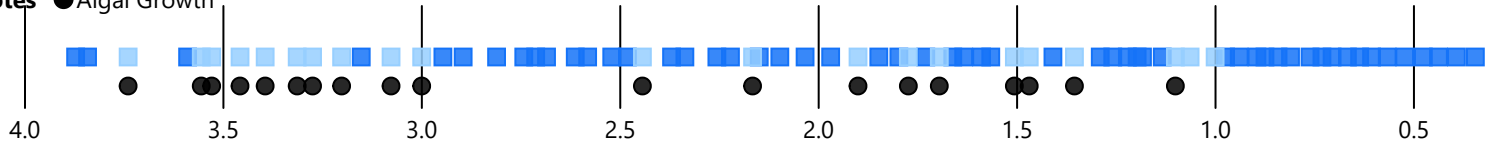
Score ■ Excellent



Nutrient Enrichment

Score ■ Low ■ Mild

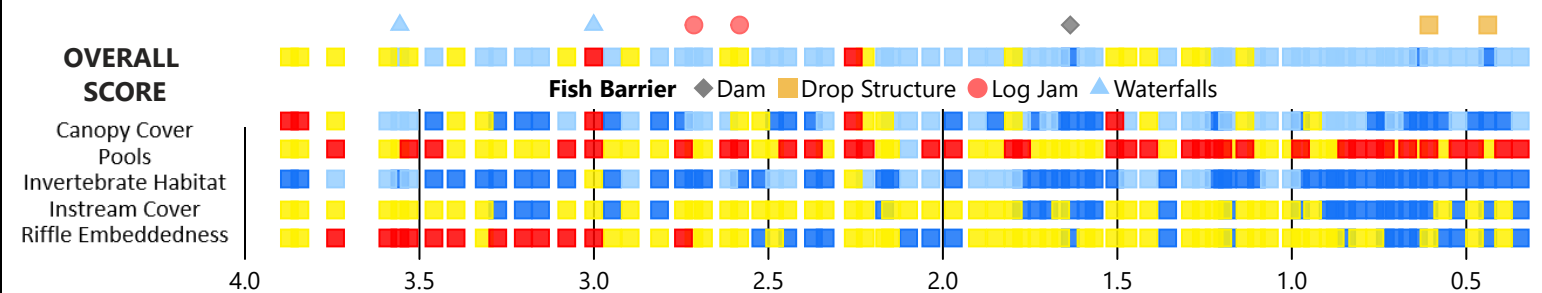
Notes ● Algal Growth



Fish Habitat

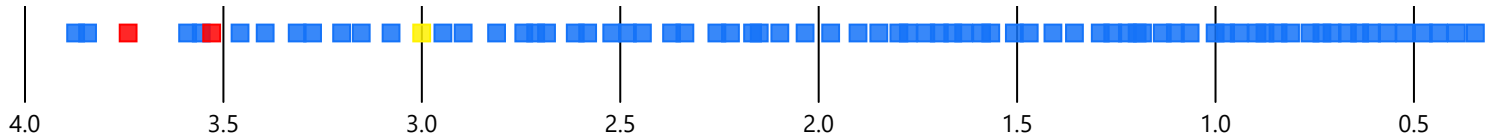
Score ■ Excellent ■ Good ■ Mediocre ■ Poor

Note: Overall Score of Fish Habitat was calculated by averaging scores for the five variables shown below.



Manure Presence

Score ■ Extensive Manure/CFO Pipe ■ Manure Present ■ None



Invasive Species

Score ● Japanese Knotweed



Aquatic Vegetation

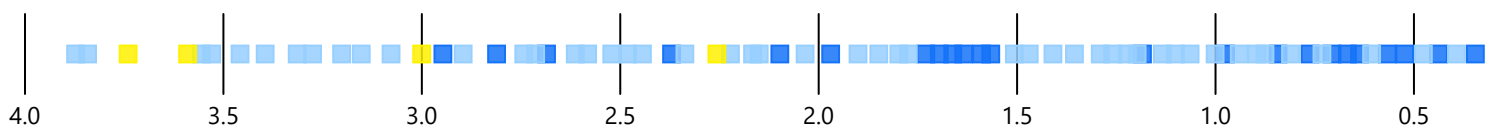
Score ■ Both ▲ Emergent ● Submerged



OVERALL SVAP RATING

BOURNES CREEK

Score ■ Excellent ■ Good ■ Mediocre



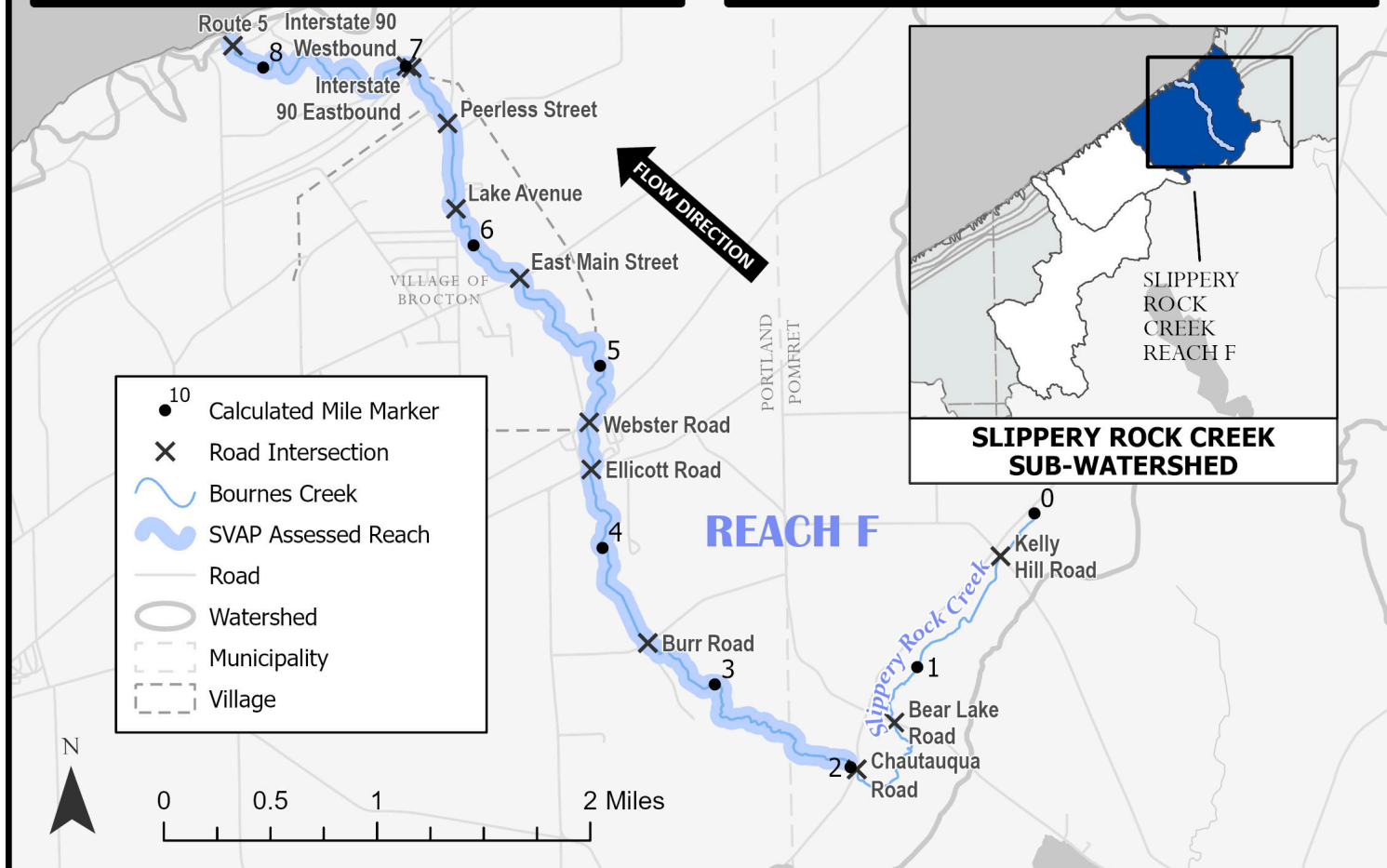
Creek Mile (3.87 at Tailwater, 0.34 at Headwater)



SLIPPERY ROCK CREEK

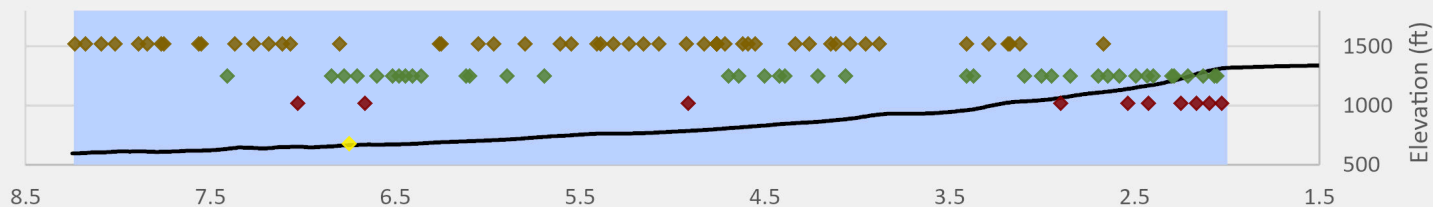
STREAM VISUAL ASSESSMENT PROTOCOL (SVAP) RESULTS
FOR REACH F

AVERAGE OVERALL SVAP RATING: **6.7**



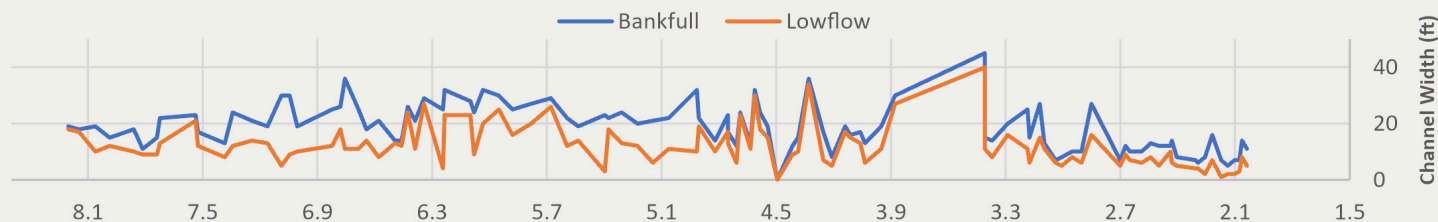
Elevation Profile

Substrate: ◆ Bedrock/Concrete ◆ Cobble ◆ Gravel ◆ Silt/Clay

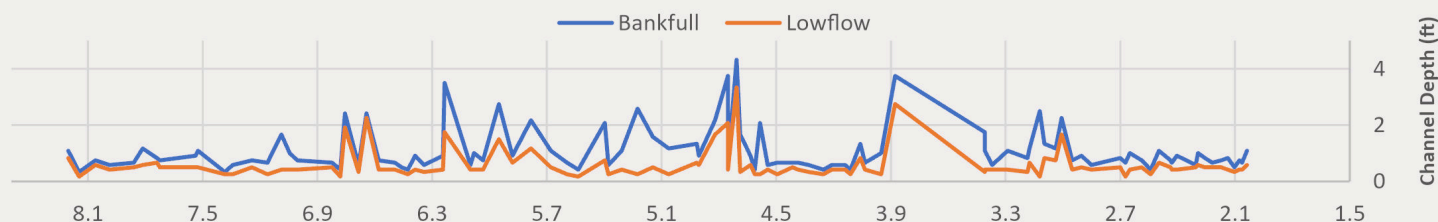


REACH F

Channel Depth



Channel Width



← FLOW DIRECTION

Creek Mile (8.20 at Tailwater, 2.04 at Headwater)

← FLOW DIRECTION

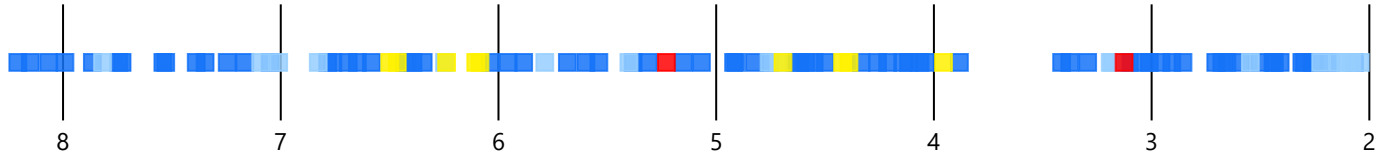
Classification Scheme for SVAP Parameters

Color Classification				
SVAP Score (0-10)	0 - 2.5	2.6 - 5	5.1 - 7.5	7.6 - 10

REACH F

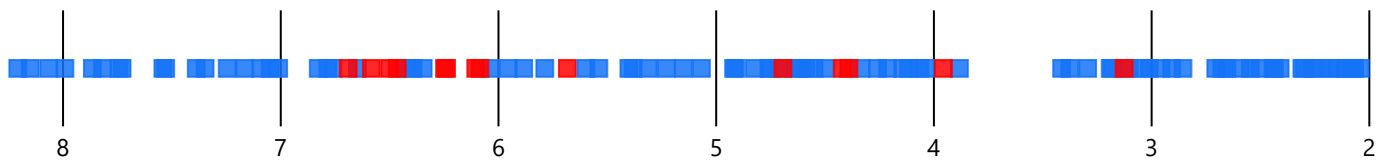
Channel Conditions

Score ■ Excellent ■ Good ■ Mediocre ■ Poor



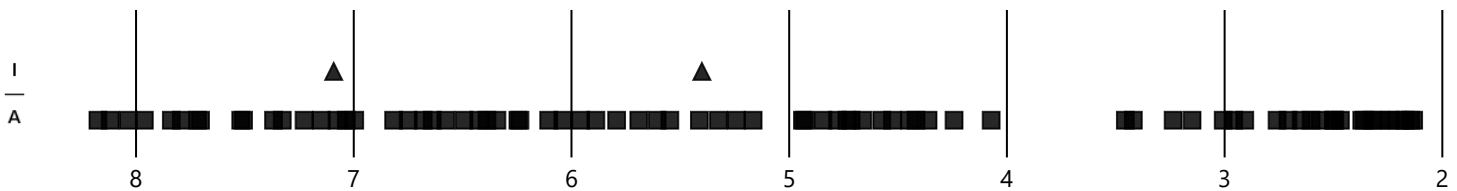
Stream Bank Hardening

■ No ■ Yes



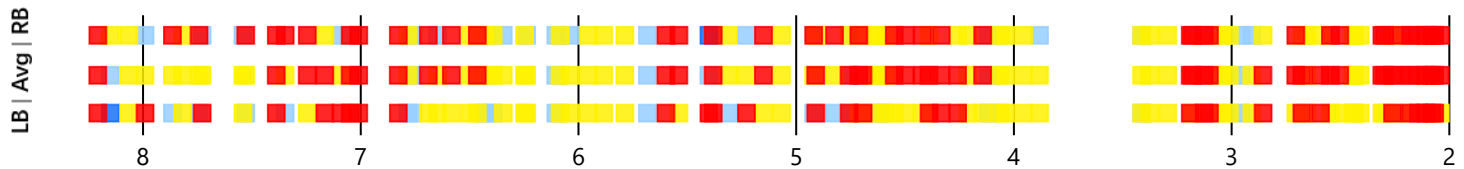
Aggradation/Incision

■ Aggradation ▲ Incision



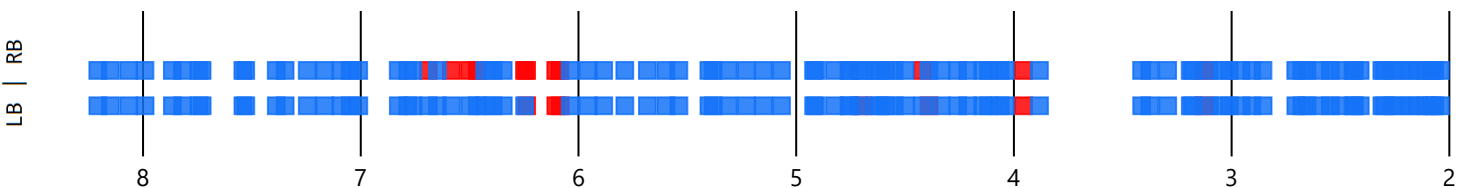
Bank Stability

Score ■ Excellent ■ Good ■ Mediocre ■ Poor



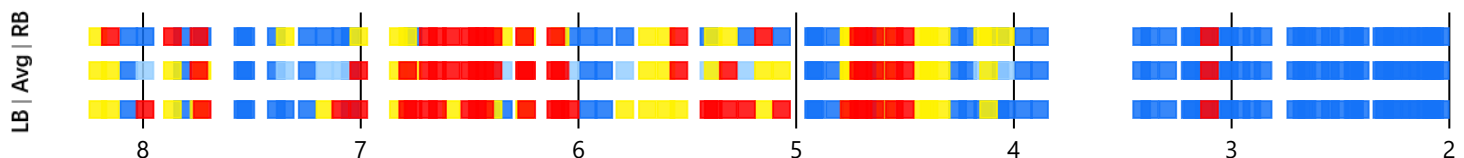
Bank Condition

■ Hardened Structure ■ Natural



Riparian Zone

Score ■ Excellent ■ Good ■ Mediocre ■ Poor



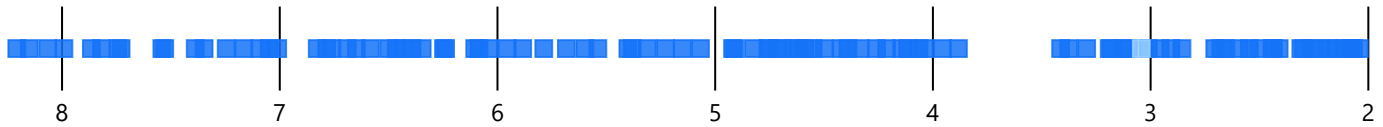
Creek Mile (8.20 at Tailwater, 2.04 at Headwater)



REACH F

Water Appearance

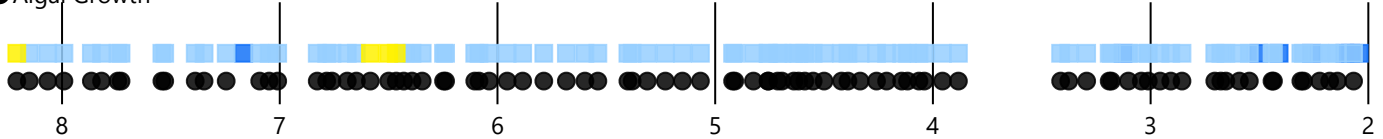
Score ■ Excellent ■ Good



Nutrient Enrichment

Low ■ Mild ■ Moderate ■

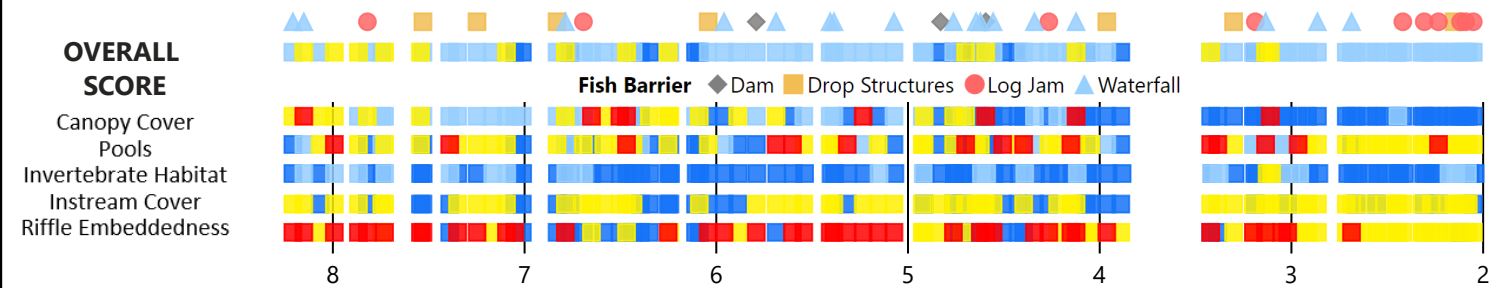
Notes ● Algal Growth



Fish Habitat

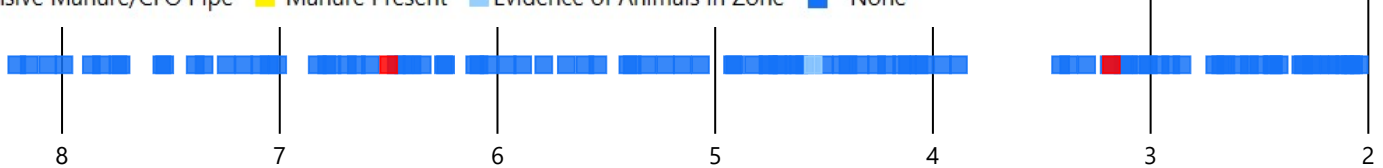
Score ■ Excellent ■ Good ■ Mediocre ■ Poor

Note: Overall Score of Fish Habitat was calculated by averaging scores for the five variables shown below.



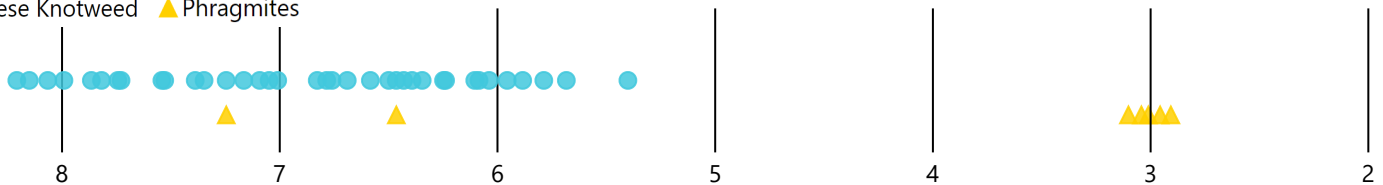
Manure Presence

■ Extensive Manure/CFO Pipe ■ Manure Present ■ Evidence of Animals in Zone ■ None



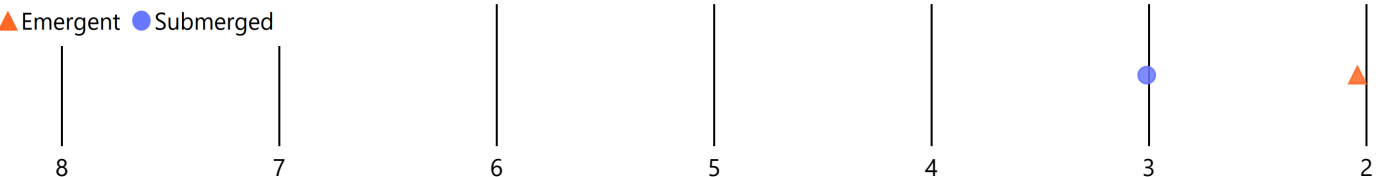
Invasive Species

● Japanese Knotweed ▲ Phragmites



Aquatic Vegetation

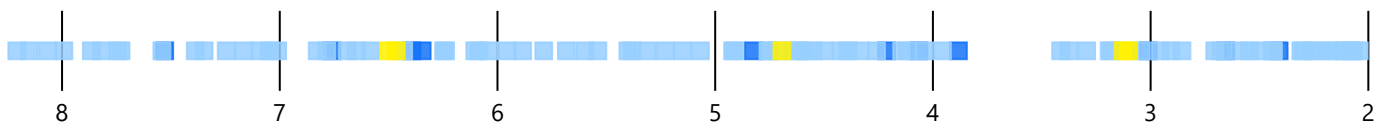
■ Both ▲ Emergent ● Submerged



OVERALL SVAP RATING

SLIPPERY ROCK CREEK

Score ■ Excellent ■ Good ■ Mediocre



FLOW DIRECTION

Creek Mile (8.20 at Tailwater, 2.04 at Headwater)

FLOW DIRECTION