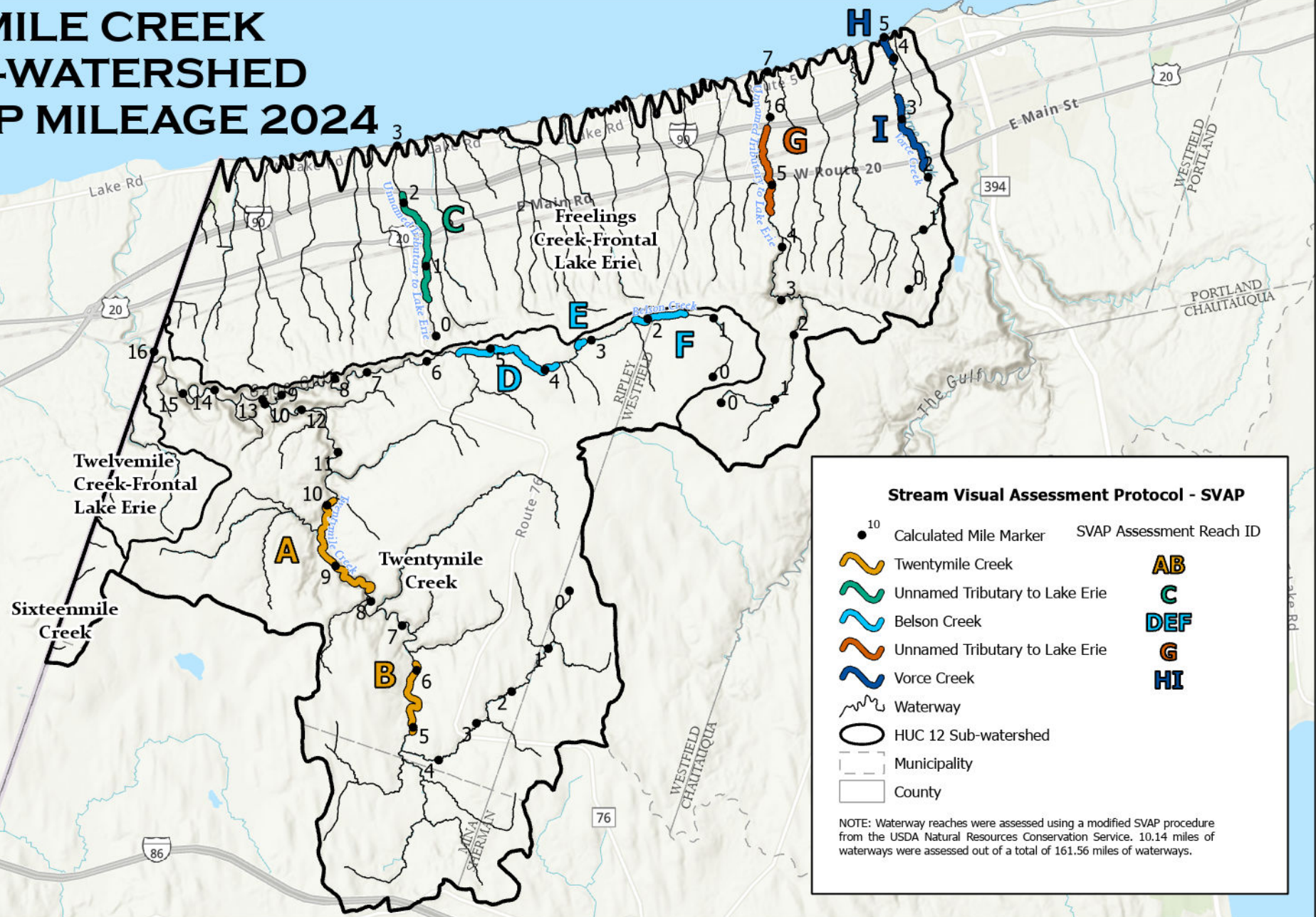


SIXMILE CREEK SUB-WATERSHED SVAP MILEAGE 2024



Department
of State

This map was prepared with funding
provided by the New York State
Department of State under Title 11 of the
Environmental Protection Fund.

Esri, NASA, NGA, USGSEsri, Airbus DS, N Robinson,
NCEAS, NLS, OS, NMA, Geodata styrelsen,
Rijkswaterstaat, GSA, Geoland, FEMA, Intermap and the
GIS user community



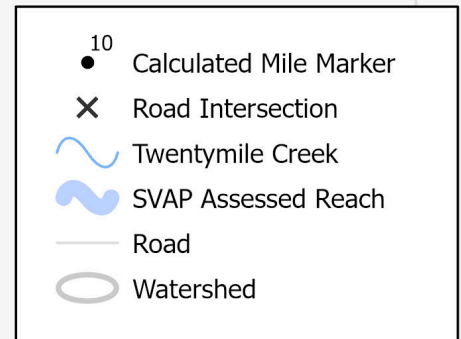
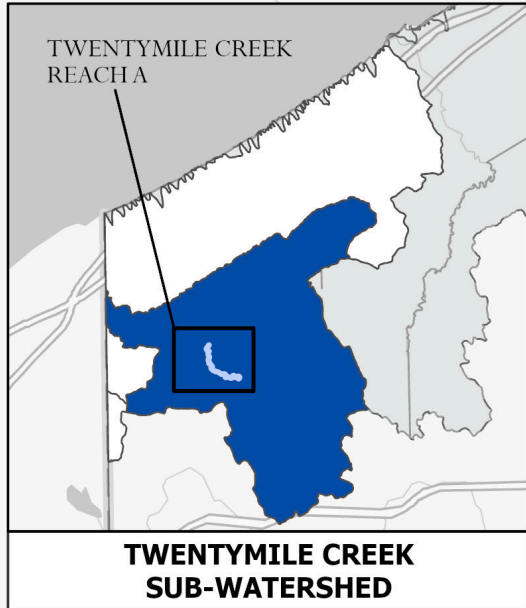
0 0.75 1.5 3 Miles



TWENTYMILE CREEK

STREAM VISUAL ASSESSMENT PROTOCOL (SVAP) RESULTS
FOR REACH A

AVERAGE OVERALL SVAP RATING: **6.8**



0 0.25 0.5 1 Miles

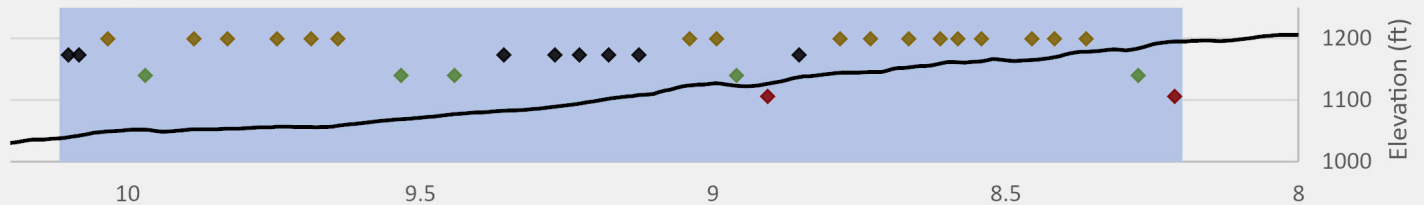
FLOW DIRECTION

South
Ripley Road

REACH A

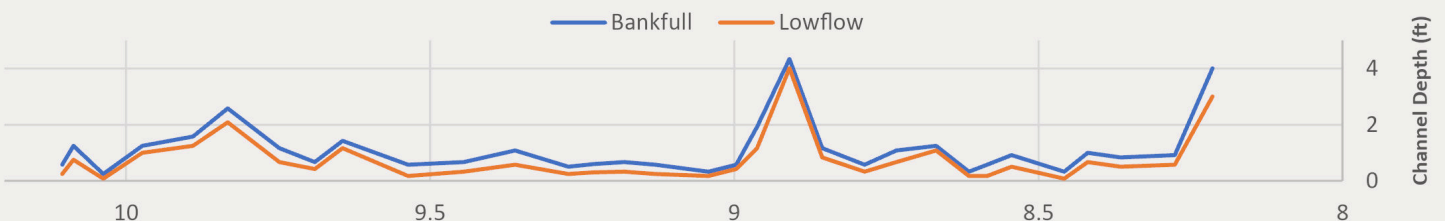
Elevation Profile

Substrate ◆ Bedrock/Concrete ◆ Boulder ◆ Cobble ◆ Gravel

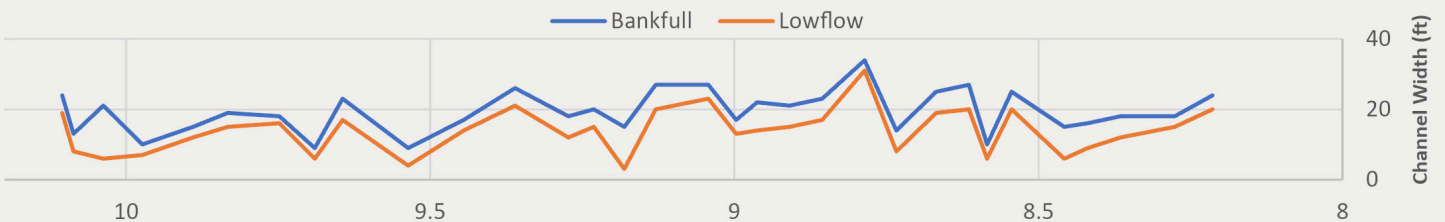


REACH A

Channel Depth



Channel Width



FLOW DIRECTION

Creek Mile (10.10 at Tailwater, 8.21 at Headwater)

FLOW DIRECTION

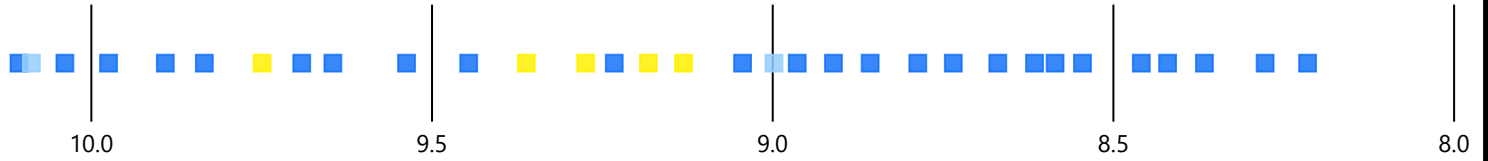
Classification Scheme for SVAP Parameters

Color Classification				
SVAP Score (0-10)	0 - 2.5	2.6 - 5	5.1 - 7.5	7.6 - 10

REACH A

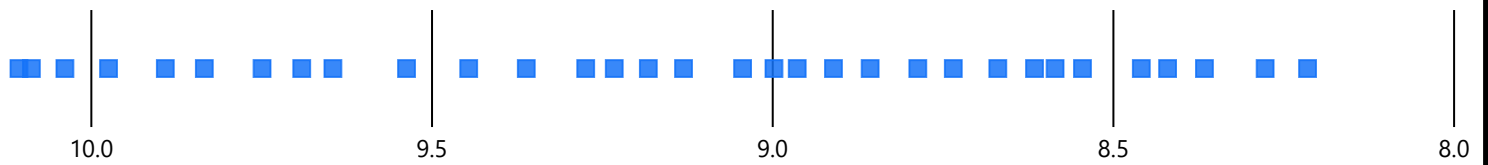
Channel Conditions

Score ■ Excellent ■ Good ■ Mediocre



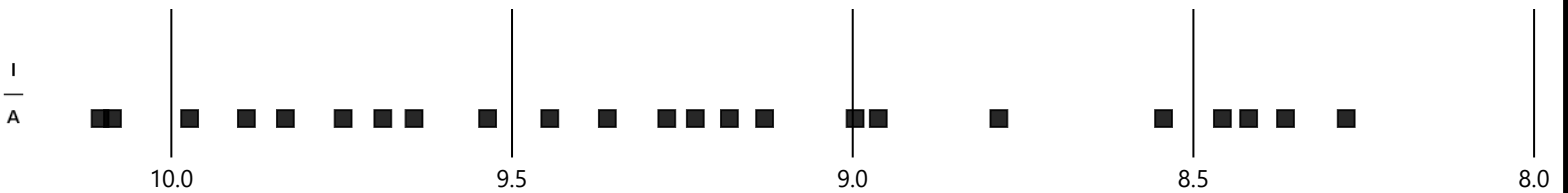
Stream Bank Hardening

■ No



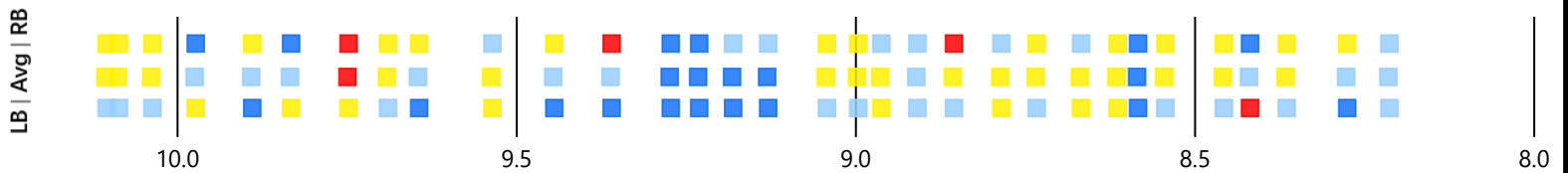
Aggradation/Incision

■ Aggradation ▲ Incision



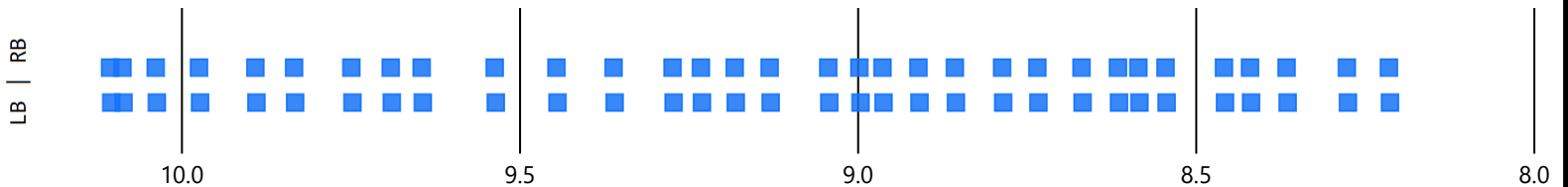
Bank Stability

Score ■ Excellent ■ Good ■ Mediocre ■ Poor



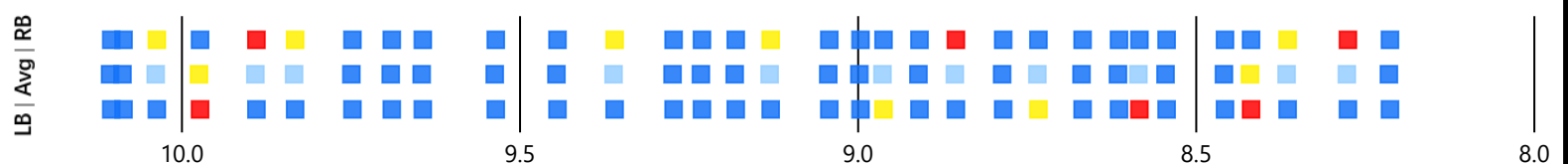
Bank Condition

■ Natural



Riparian Zone

Score ■ Excellent ■ Good ■ Mediocre ■ Poor

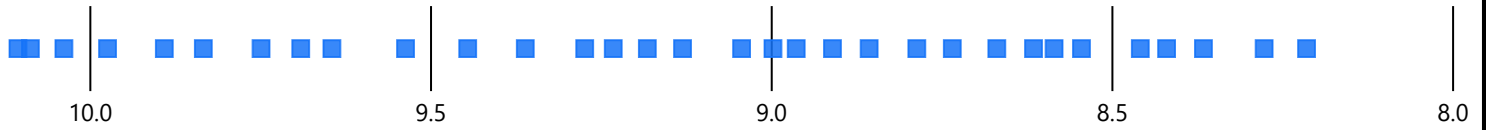


← FLOW DIRECTION Creek Mile (10.01 at Tailwater, 8.21 at Headwater) ← FLOW DIRECTION

REACH A

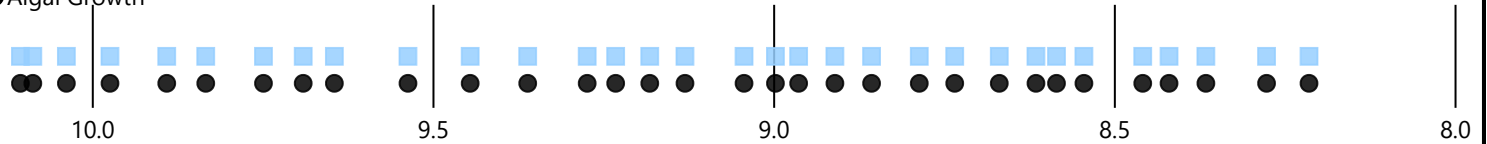
Water Appearance

Score ■ Excellent



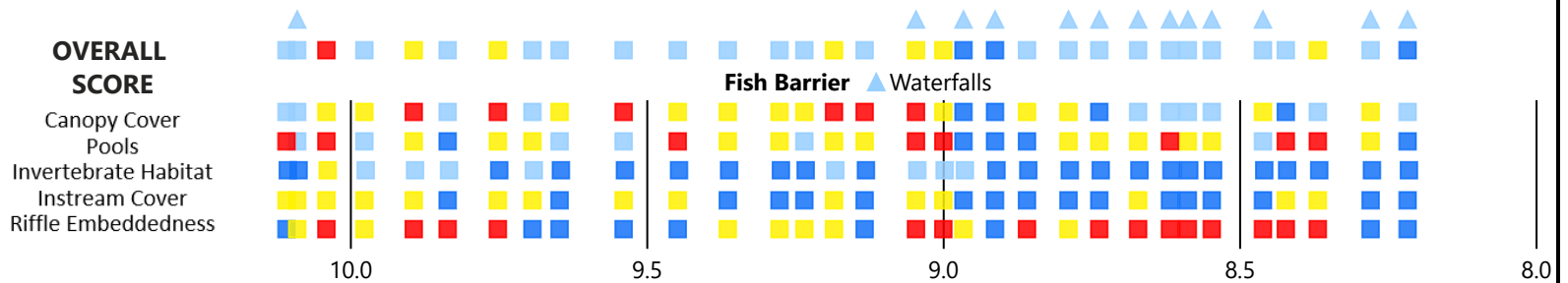
Nutrient Enrichment

Score ■ Mild
Notes ● Algal Growth



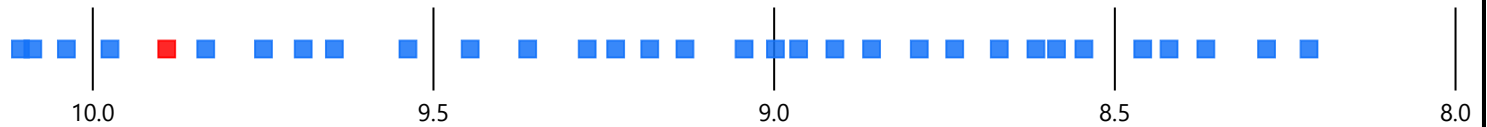
Fish Habitat

Score ■ Excellent ■ Good ■ Mediocre ■ Poor *Note: Overall Score of Fish Habitat was calculated by averaging scores for the five variables shown below.*



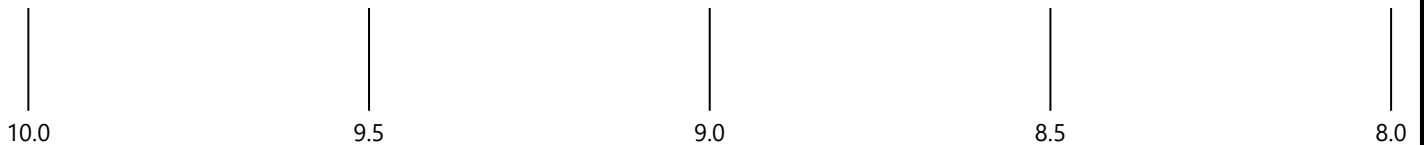
Manure Presence

■ Extensive Manure/CFO Pipes ■ None



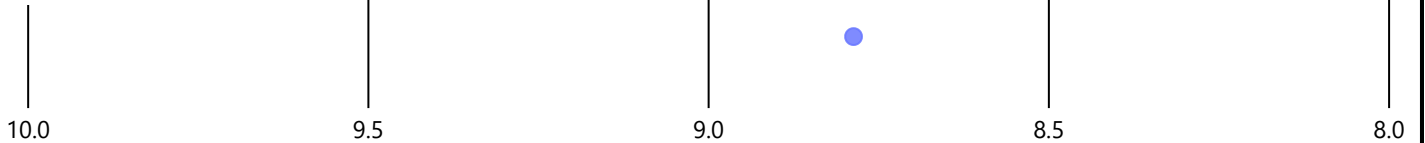
Invasive Species

None Observed



Aquatic Vegetation

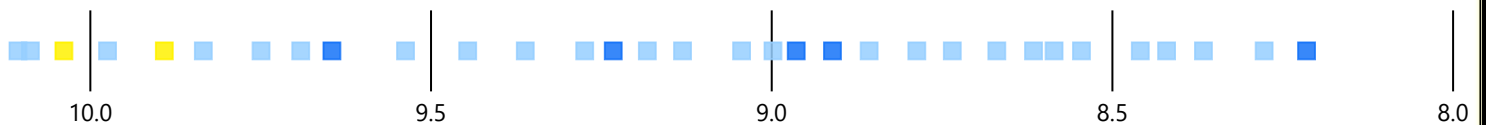
■ Both ▲ Emergent ● Submerged



OVERALL SVAP RATING

TWENTYMILE CREEK

Score ■ Excellent ■ Good ■ Mediocre



FLOW DIRECTION

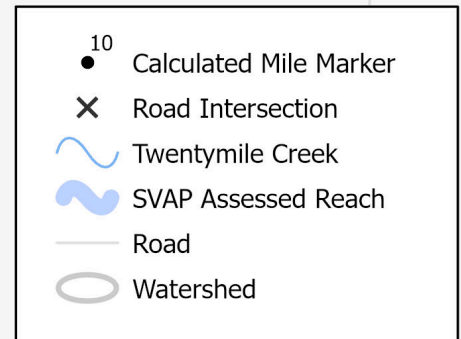
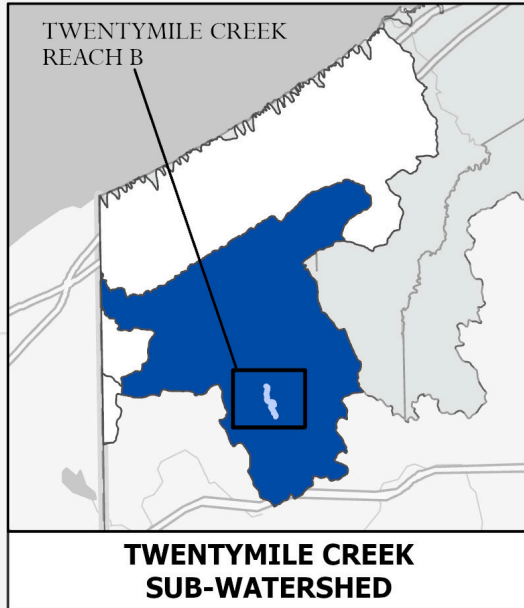
Creek Mile (10.01 at Tailwater, 8.21 at Headwater)

FLOW DIRECTION

TWENTYMILE CREEK

STREAM VISUAL ASSESSMENT PROTOCOL (SVAP) RESULTS
FOR REACH B

AVERAGE OVERALL SVAP RATING: **6.6**



0 0.13 0.25 0.5 Miles

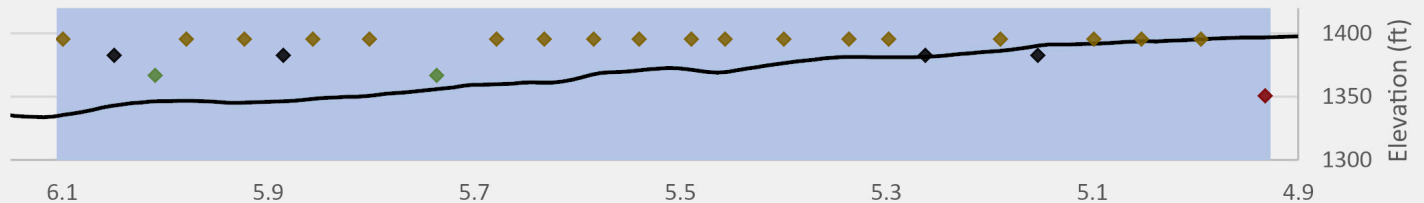


REACH B

5
Northeast
Sherman Road

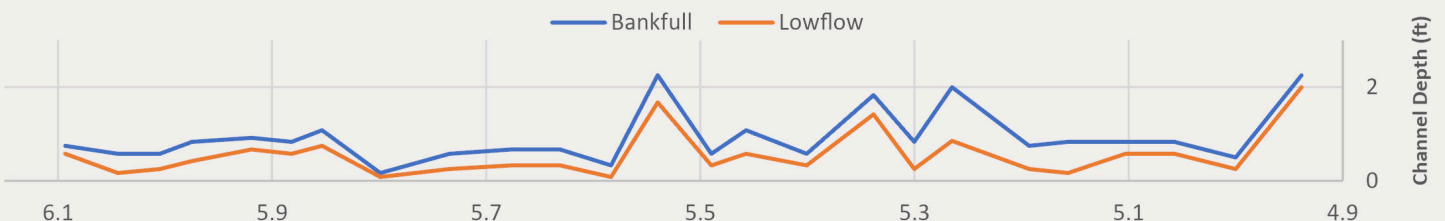
Elevation Profile

Substrate ◆ Bedrock/Concrete ◆ Boulder ◆ Cobble ◆ Gravel

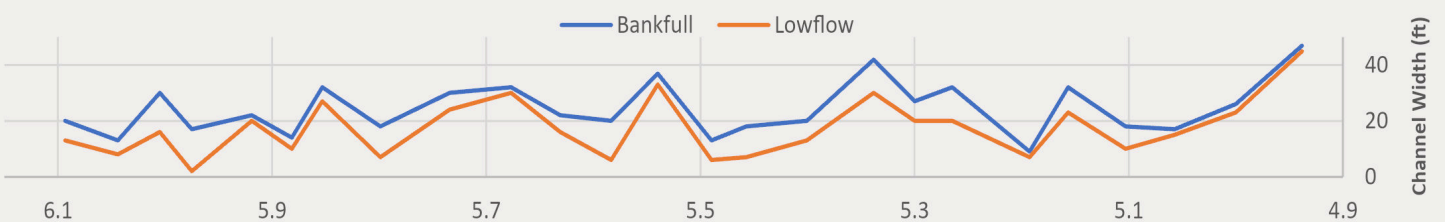


REACH B

Channel Depth



Channel Width



← FLOW DIRECTION

Creek Mile (6.09 at Tailwater, 4.94 at Headwater)

← FLOW DIRECTION

Classification Scheme for SVAP Parameters

Color Classification				
SVAP Score (0-10)	0 - 2.5	2.6 - 5	5.1 - 7.5	7.6 - 10

REACH B

Channel Conditions

Score ■ Excellent ■ Mediocre



Stream Bank Hardening

No



Aggradation/Incision

■ Aggradation ▲ Incision



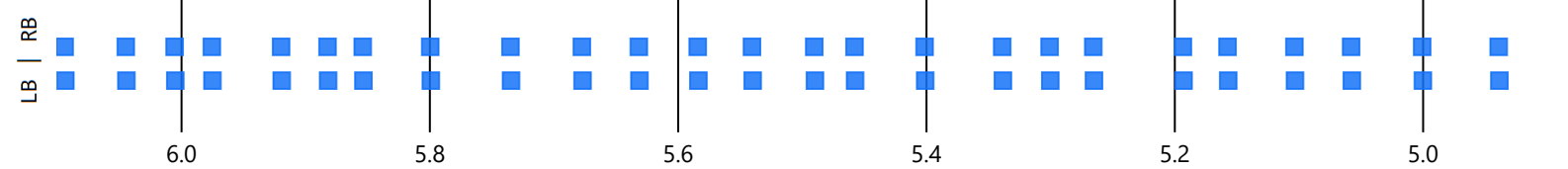
Bank Stability

Score ■ Excellent ■ Good ■ Mediocre



Bank Condition

Natural



Riparian Zone

Score ■ Excellent ■ Good ■ Mediocre ■ Poor



REACH B

Water Appearance

Score ■ Excellent



Nutrient Enrichment

■ Low ■ Mild

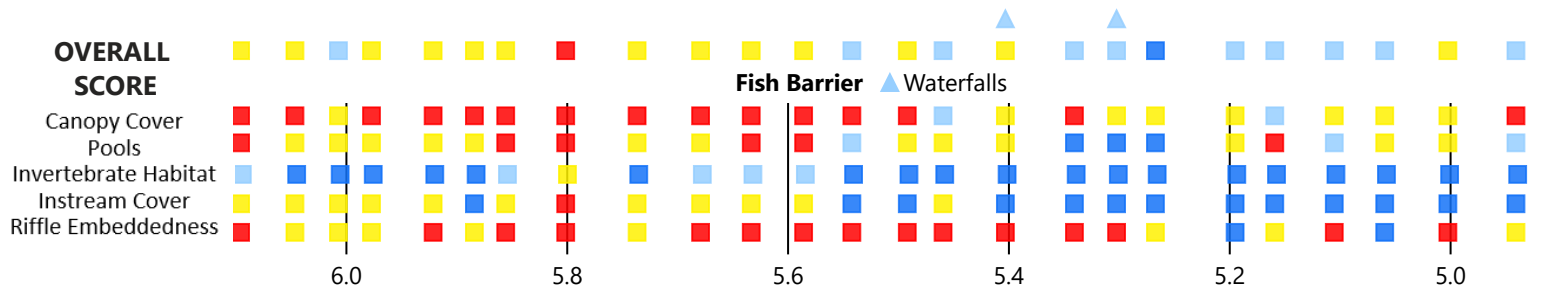
Notes ● Algal Growth



Fish Habitat

Score ■ Excellent ■ Good ■ Mediocre ■ Poor

Note: Overall Score of Fish Habitat was calculated by averaging scores for the five variables shown below.



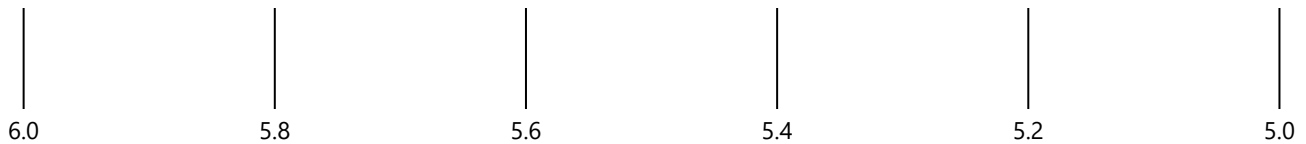
Manure Presence

■ None



Invasive Species

None Observed



Aquatic Vegetation

■ Both ▲ Emergent ● Submerged



OVERALL SVAP RATING

TWENTYMILE CREEK

Score ■ Excellent ■ Good ■ Mediocre



← FLOW DIRECTION

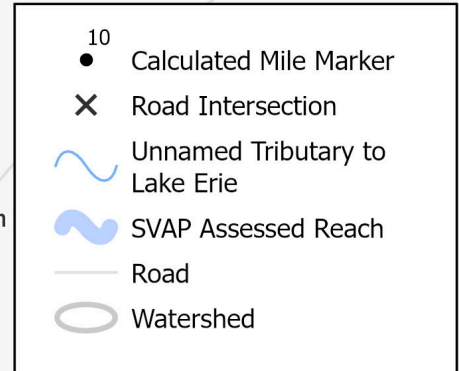
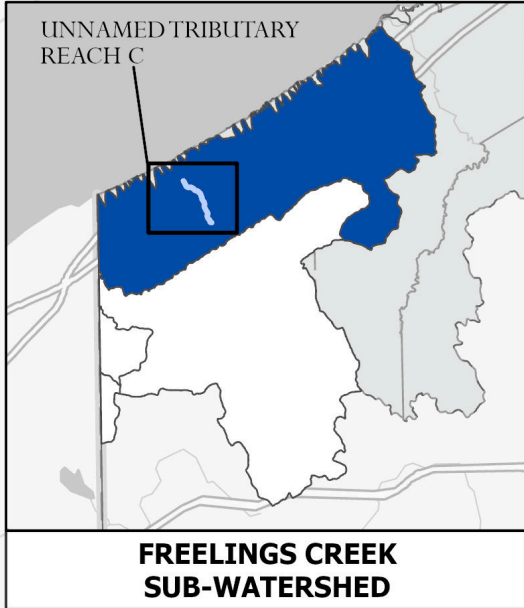
Creek Mile (6.09 at Tailwater, 4.94 at Headwater)

← FLOW DIRECTION

UNNAMED TRIBUTARY TO LAKE ERIE

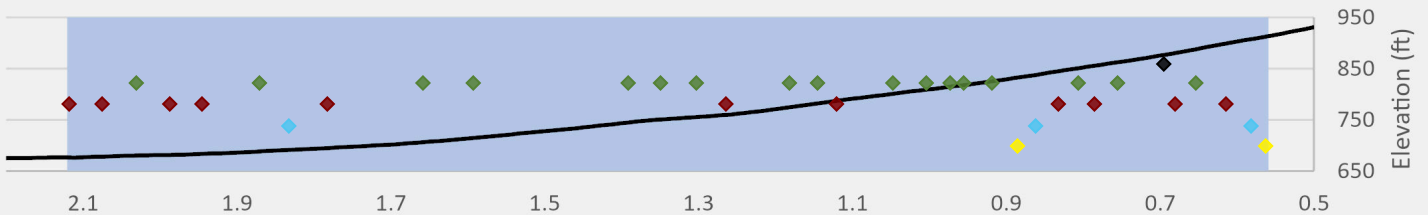
STREAM VISUAL ASSESSMENT PROTOCOL (SVAP) RESULTS
FOR REACH C

AVERAGE OVERALL SVAP RATING: **4.5**

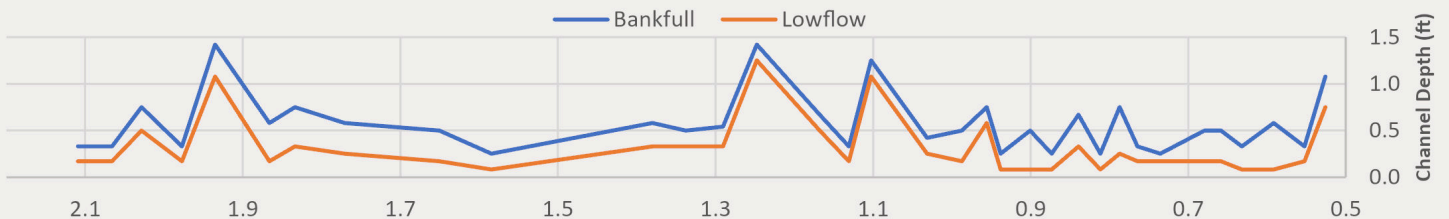


0 0.25 0.5 1 Miles

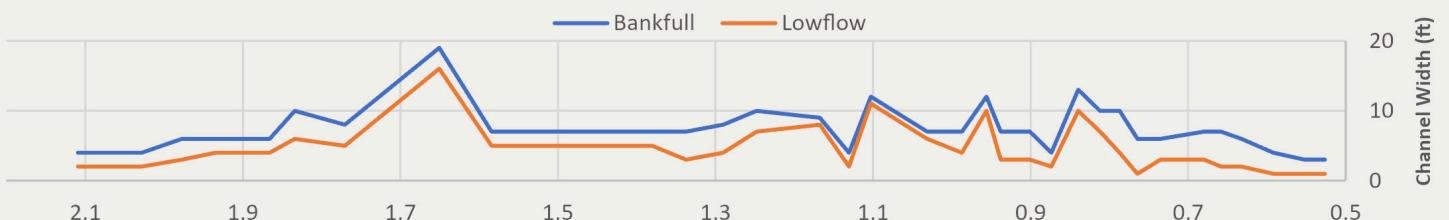
Elevation Profile Substrate ◆ BEDROCK/CONCRETE ◆ BOULDER ◆ COBBLE ◆ GRAVEL ◆ SAND ◆ SILT/CLAY



Channel Depth



Channel Width



← FLOW DIRECTION

Creek Mile (2.11 at Tailwater, 0.53 at Headwater)

← FLOW DIRECTION

Classification Scheme for SVAP Parameters

Color Classification				
SVAP Score (0-10)	0 - 2.5	2.6 - 5	5.1 - 7.5	7.6 - 10

REACH C

Channel Conditions

Score ■ Excellent ■ Good ■ Mediocre ■ Poor



Stream Bank Hardening

■ No ■ Yes/Riprap



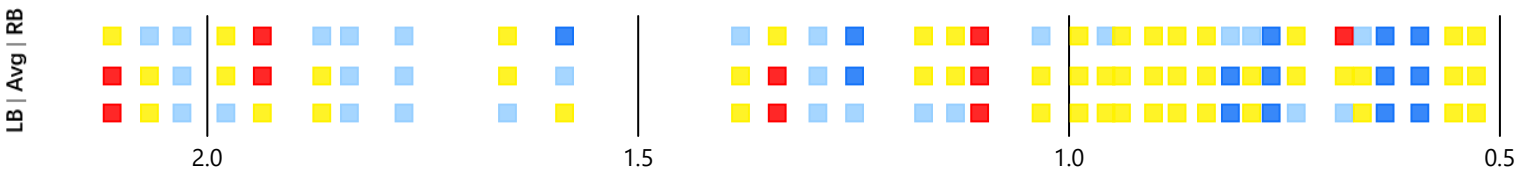
Aggradation/Incision

■ Aggradation ▲ Incision



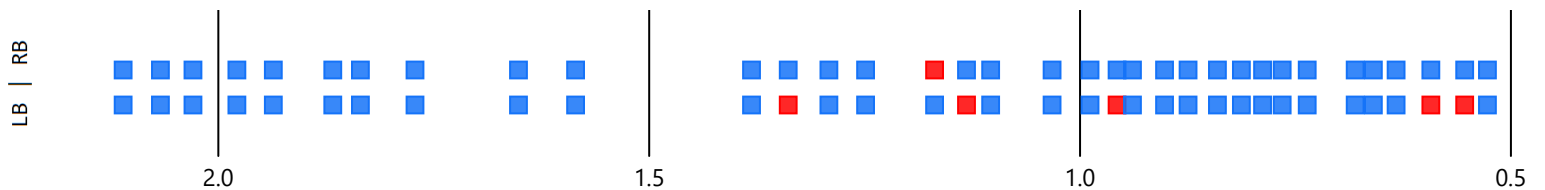
Bank Stability

Score ■ Excellent ■ Good ■ Mediocre ■ Poor



Bank Condition

■ Hardened Structure ■ Natural



Riparian Zone

Score ■ Excellent ■ Good ■ Mediocre ■ Poor



Creek Mile (2.11 at Tailwater, 0.53 at Headwater)



REACH C

Water Appearance

Score ■ Excellent ■ Good ■ Mediocre



Nutrient Enrichment

■ Low ■ Mild ■ Moderate

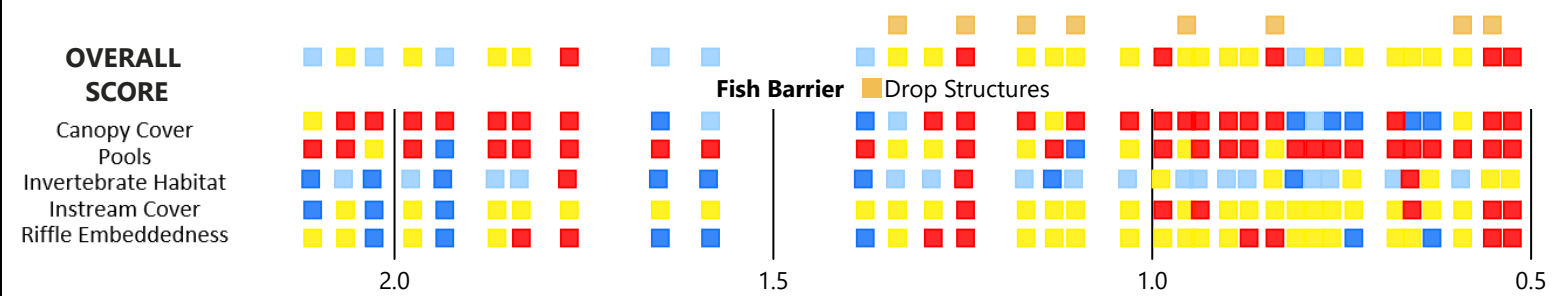
Notes ● Algal Growth ◆ Both ▲ Dense Aquatic Plant Beds



Fish Habitat

Score ■ Excellent ■ Good ■ Mediocre ■ Poor

Note: Overall Score of Fish Habitat was calculated by averaging scores for the five variables shown below.



Manure Presence

■ None



Invasive Species

● Japanese Knotweed



Aquatic Vegetation

▲ Emergent ● Submerged



OVERALL SVAP RATING

UNNAMED TRIBUTARY TO LAKE ERIE

Score ■ Good ■ Mediocre ■ Poor



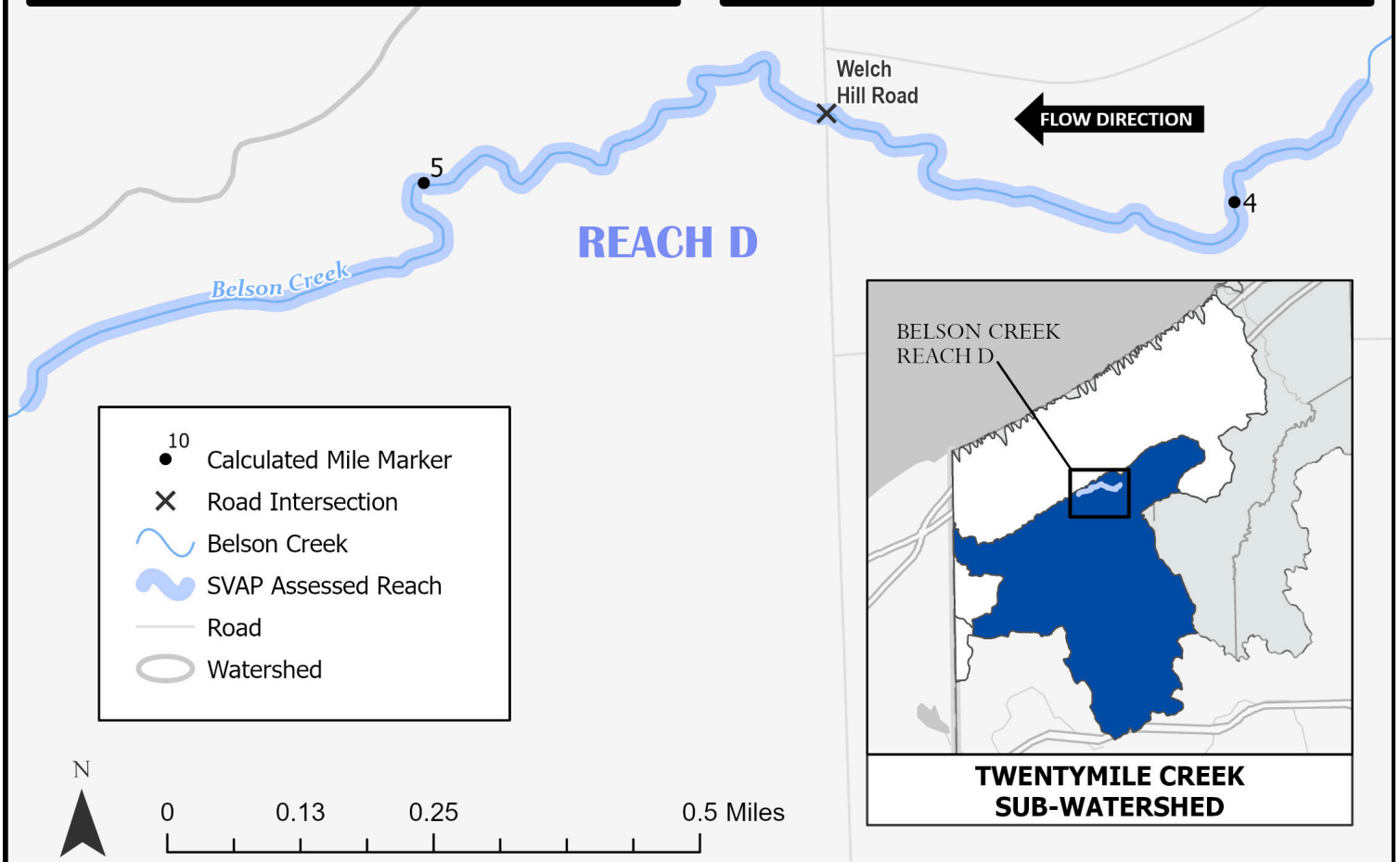
Creek Mile (2.11 at Tailwater, 0.53 at Headwater)



BELSON CREEK

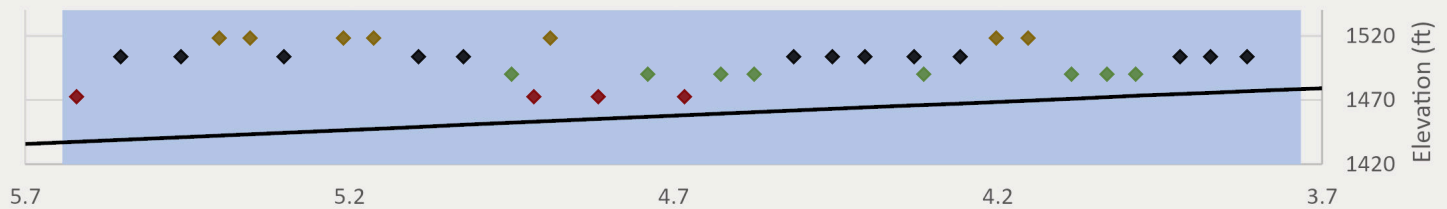
STREAM VISUAL ASSESSMENT PROTOCOL (SVAP) RESULTS
FOR REACH D

AVERAGE OVERALL SVAP RATING: **7.3**



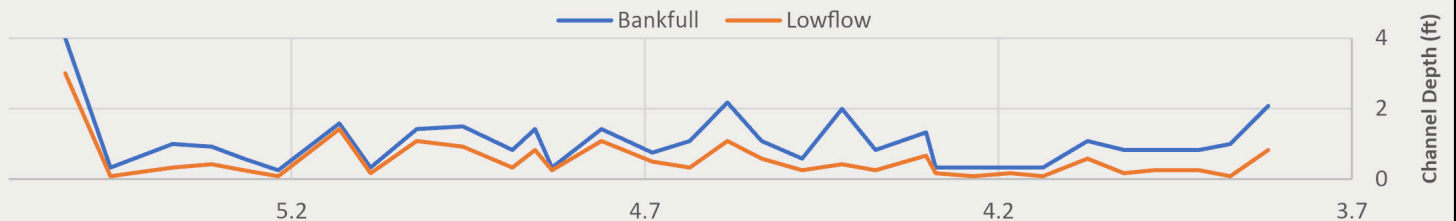
Elevation Profile

Substrate: ◆ Bedrock/Concrete ◆ Boulder ◆ Cobble ◆ Gravel

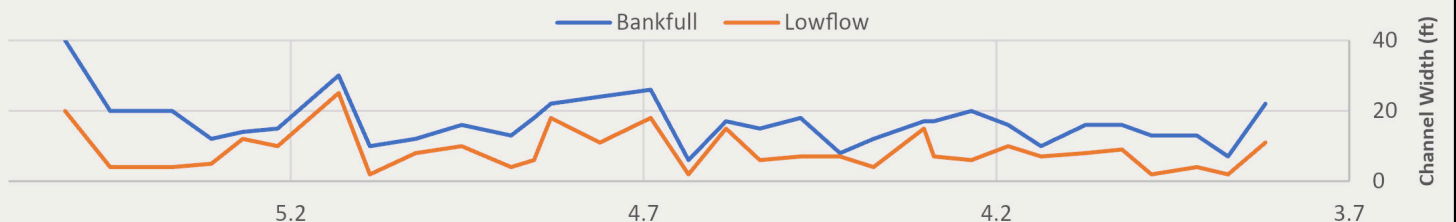


REACH D

Channel Depth



Channel Width



← FLOW DIRECTION

Creek Mile (5.52 at Tailwater, 3.82 at Headwater)

← FLOW DIRECTION

Classification Scheme for SVAP Parameters

Color Classification				
SVAP Score (0-10)	0 - 2.5	2.6 - 5	5.1 - 7.5	7.6 - 10

REACH D

Channel Conditions

Score ■ Excellent ■ Good



Stream Bank Hardening

■ No



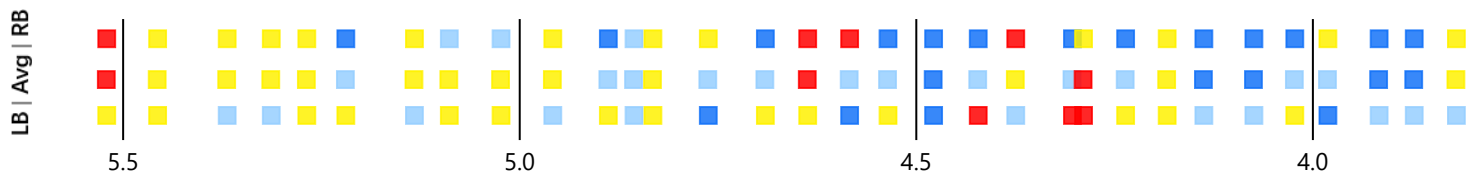
Aggradation/Incision

■ Aggradation ▲ Incision



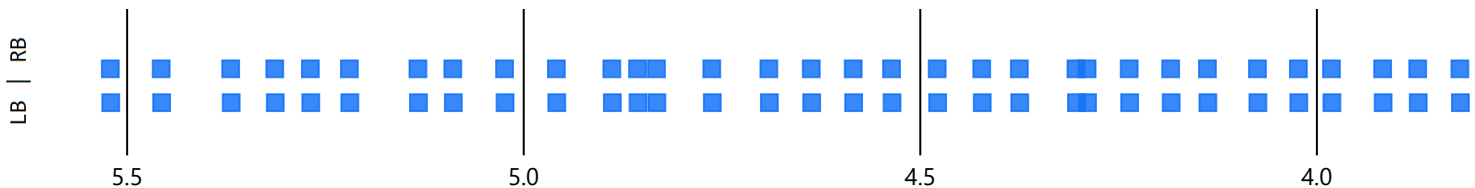
Bank Stability

Score ■ Excellent ■ Good ■ Mediocre ■ Poor



Bank Condition

■ Natural



Riparian Zone

Score ■ Excellent ■ Good ■ Mediocre



← FLOW DIRECTION Creek Mile (5.52 at Tailwater, 3.82 at Headwater) ← FLOW DIRECTION

REACH D

Water Appearance

Score ■ Excellent



Nutrient Enrichment

■ Low ■ Mild

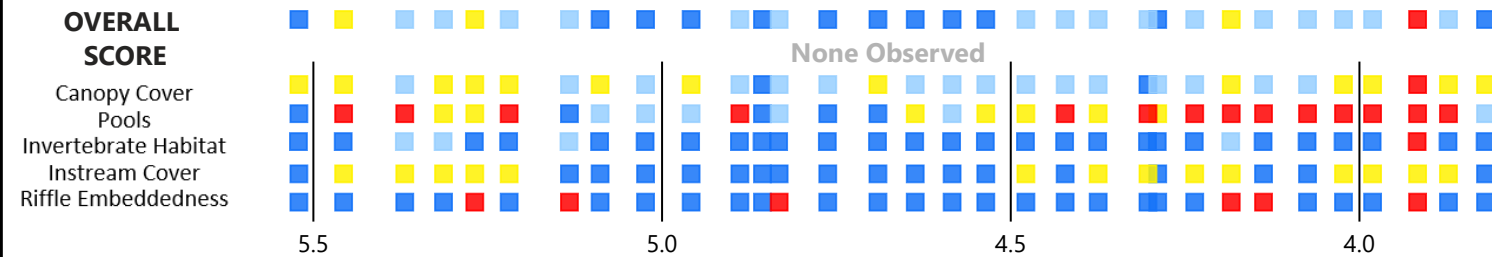
Notes ● Algal Growth ◆ Both ▲ Dense Aquatic Plant Beds



Fish Habitat

Score ■ Excellent ■ Good ■ Mediocre ■ Poor

Note: Overall Score of Fish Habitat was calculated by averaging scores for the five variables shown below.



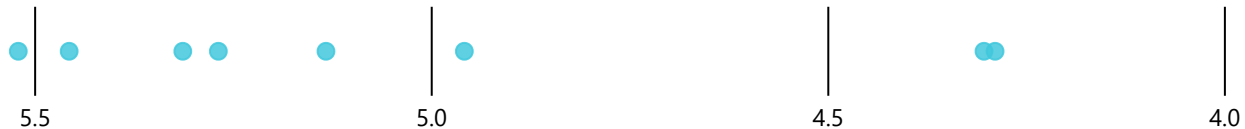
Manure Presence

■ Evidence of Animals in Zone ■ None



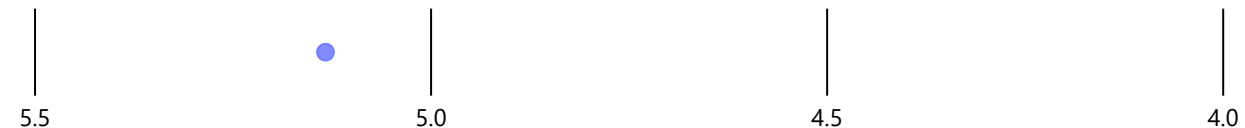
Invasive Species

● Japanese Knotweed



Aquatic Vegetation

● Submerged



OVERALL SVAP RATING

BELSON CREEK

Score ■ Excellent ■ Good ■ Mediocre



← FLOW DIRECTION

Creek Mile (5.52 at Tailwater, 3.82 at Headwater)

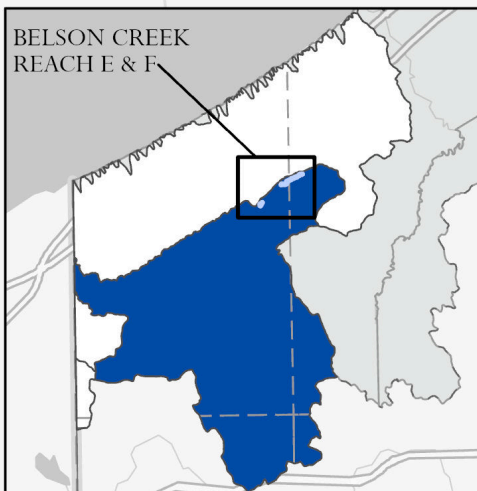
← FLOW DIRECTION

BELSON CREEK

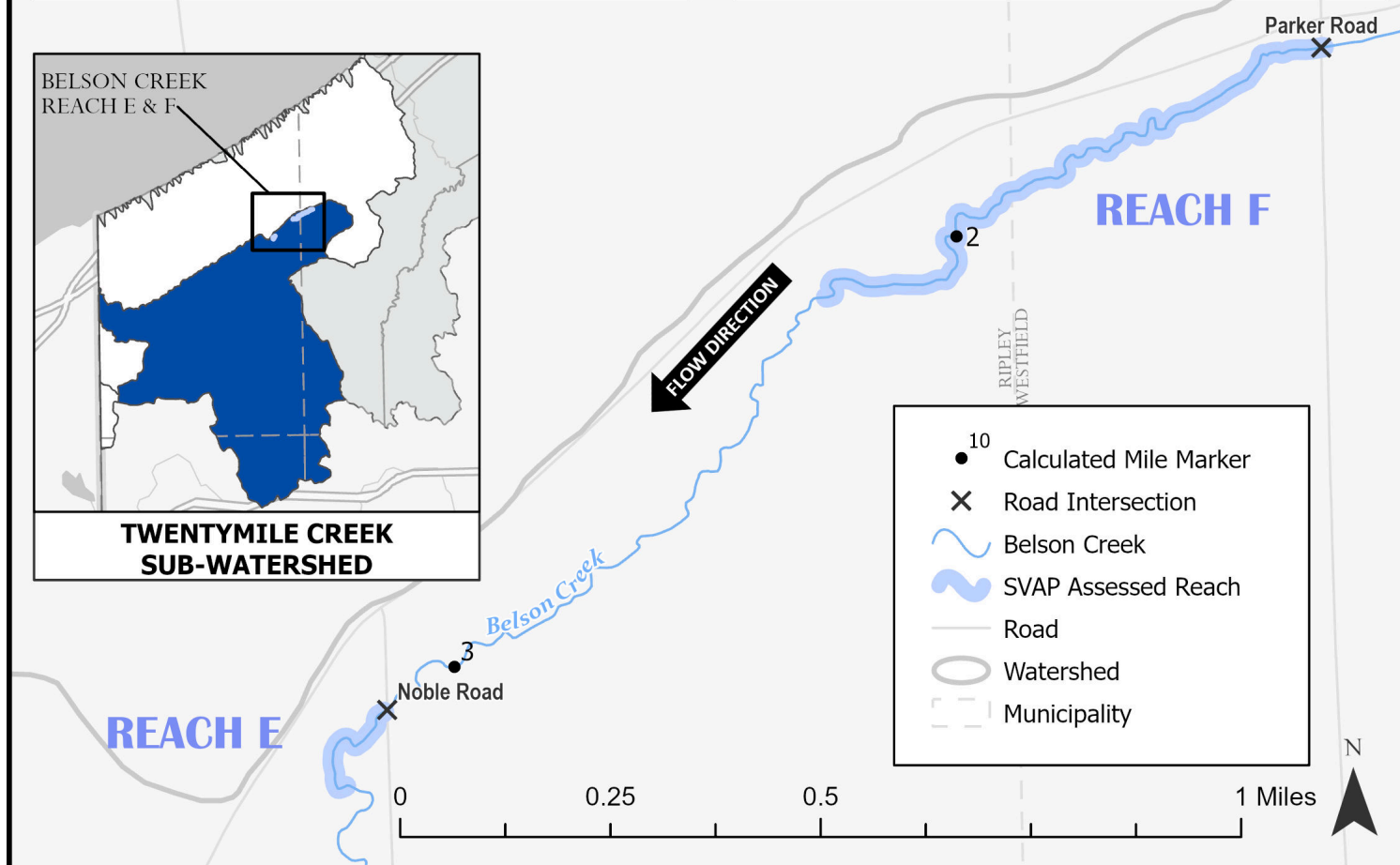
STREAM VISUAL ASSESSMENT PROTOCOL (SVAP) RESULTS
FOR REACH E & F

AVERAGE OVERALL SVAP RATING

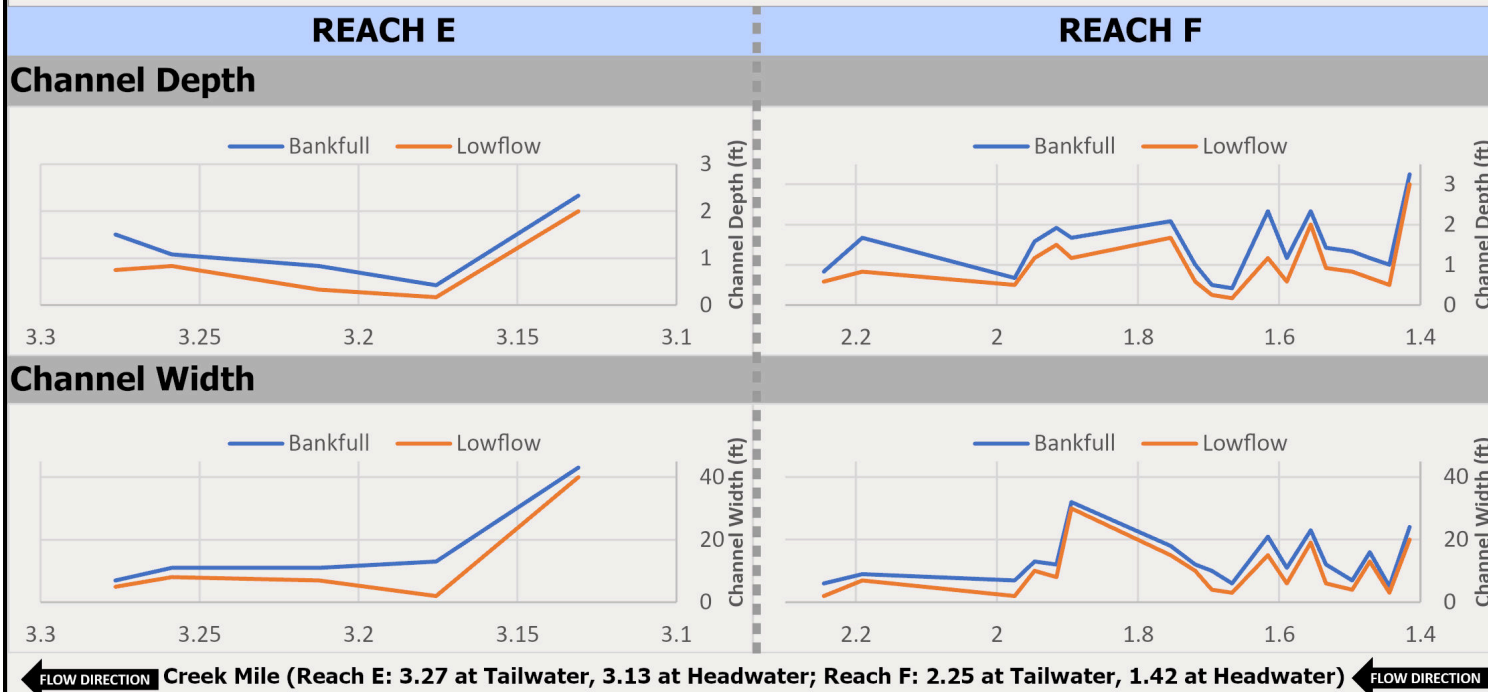
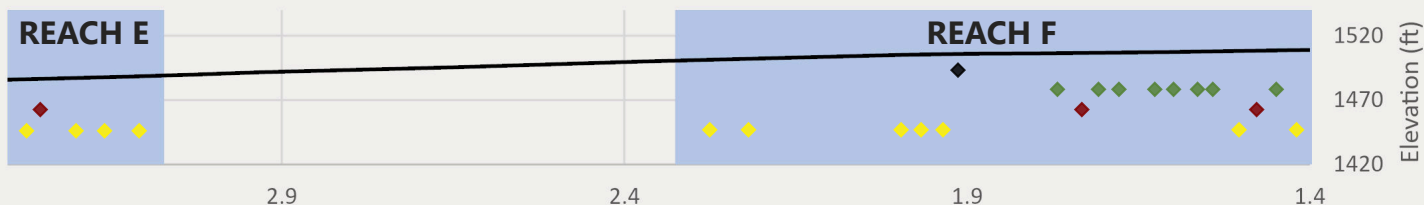
REACH E: **7.2** REACH F: **6.3**



**TWENTYMILE CREEK
SUB-WATERSHED**

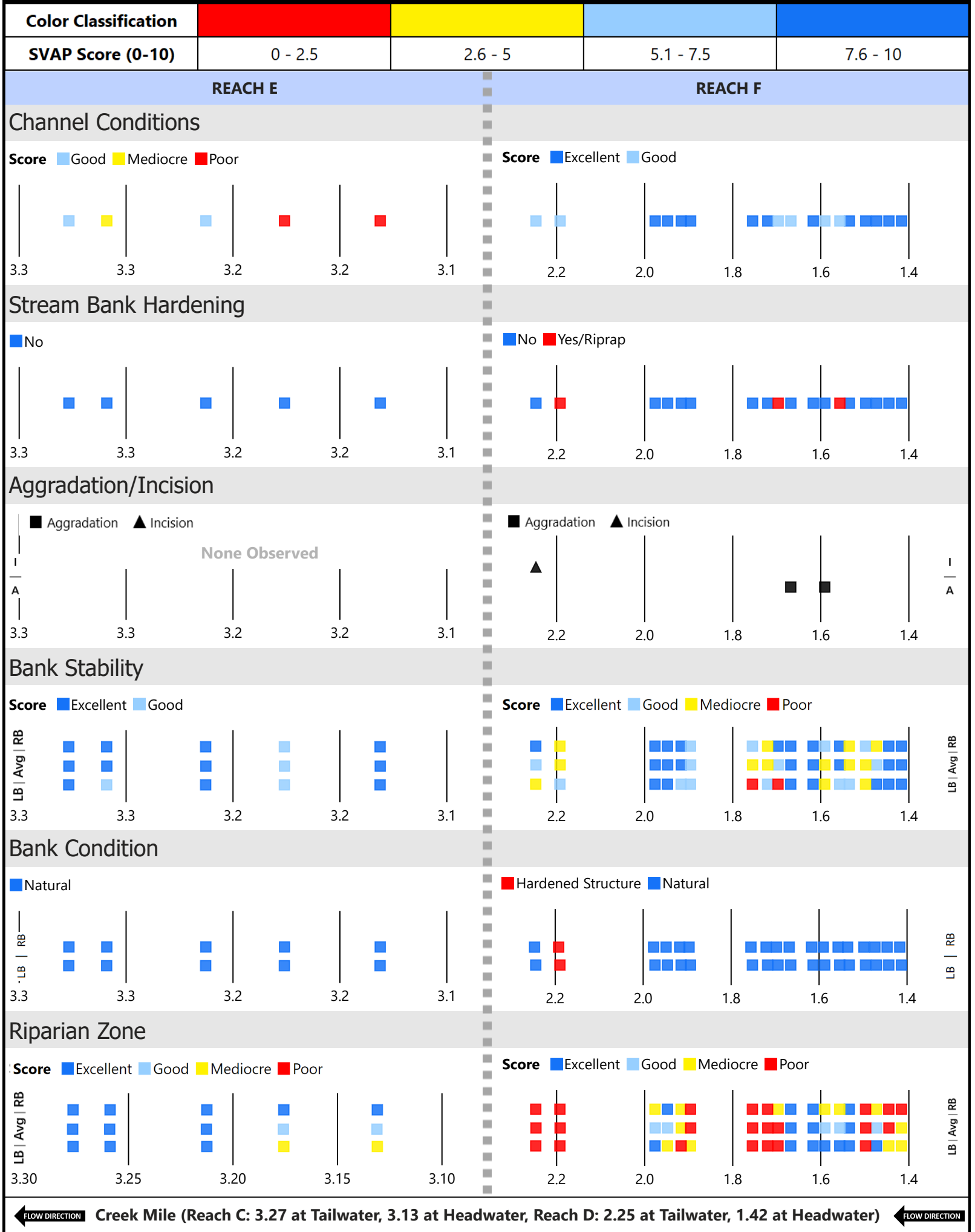


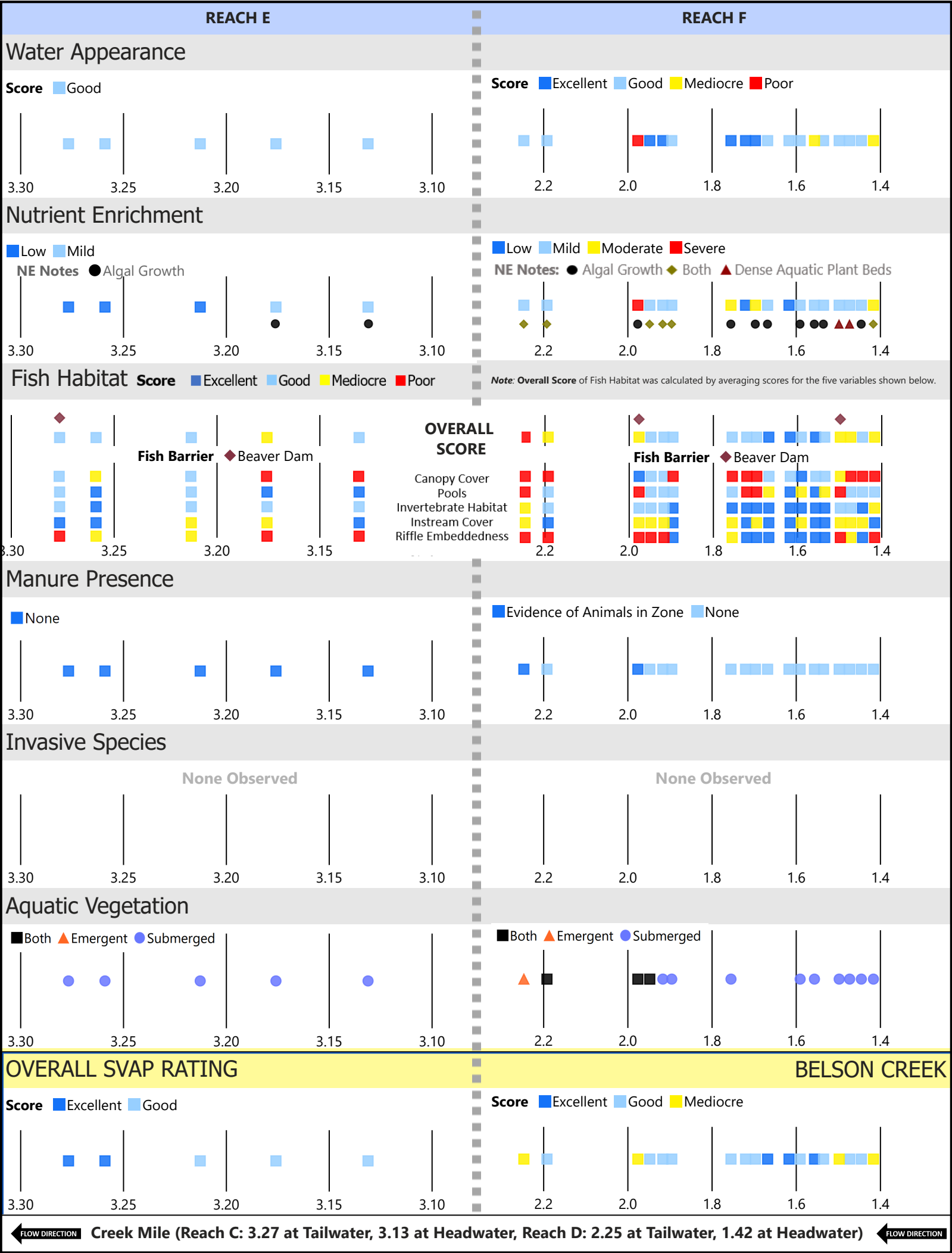
Elevation Profile Substrate ◆ Boulder ◆ Cobble ◆ Gravel ◆ Silt/Clay



← **FLOW DIRECTION** Creek Mile (Reach E: 3.27 at Tailwater, 3.13 at Headwater; Reach F: 2.25 at Tailwater, 1.42 at Headwater) **FLOW DIRECTION** →

Classification Scheme for SVAP Parameters

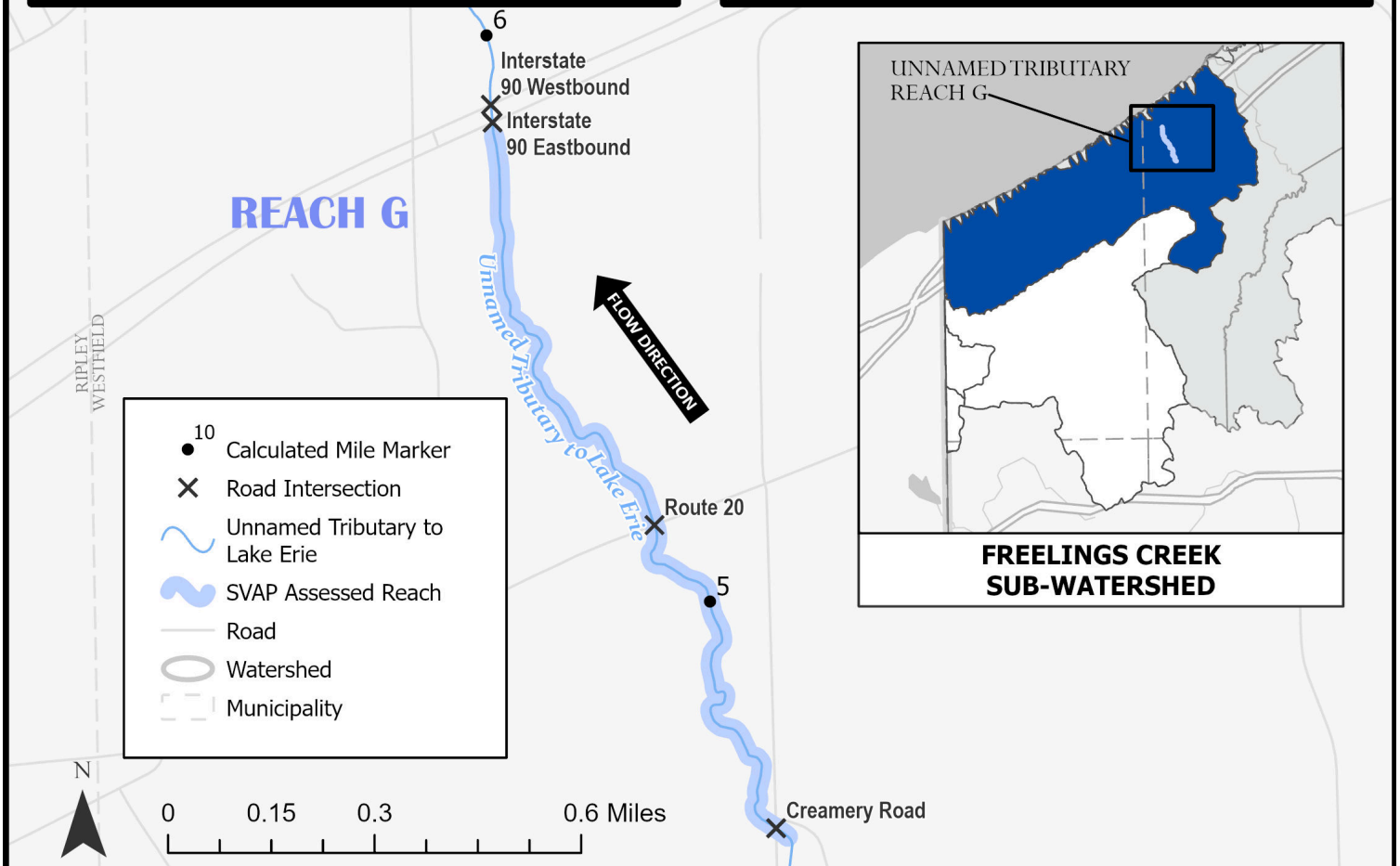




UNNAMED TRIBUTARY TO LAKE ERIE

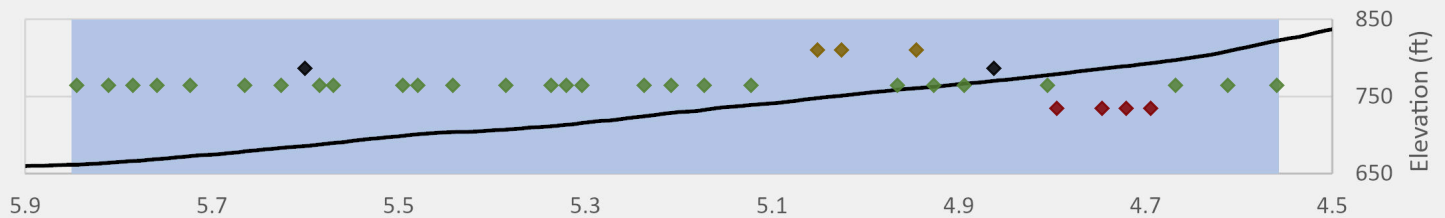
STREAM VISUAL ASSESSMENT PROTOCOL (SVAP) RESULTS
FOR REACH G

AVERAGE OVERALL SVAP RATING: **7.1**



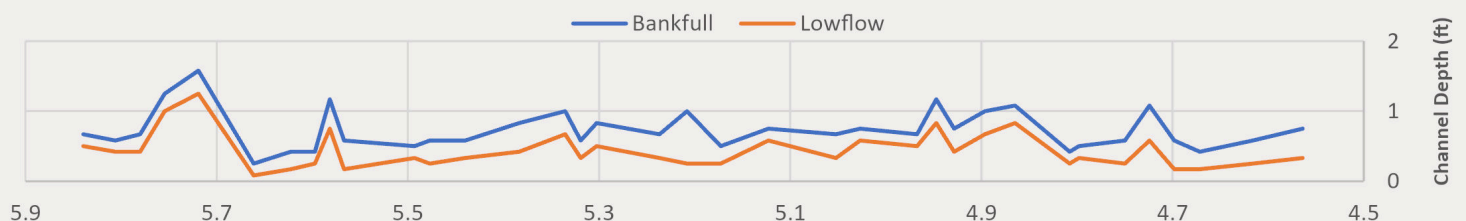
Elevation Profile

Substrate ◆ Bedrock/Concrete ◆ Boulder ◆ Cobble ◆ Gravel

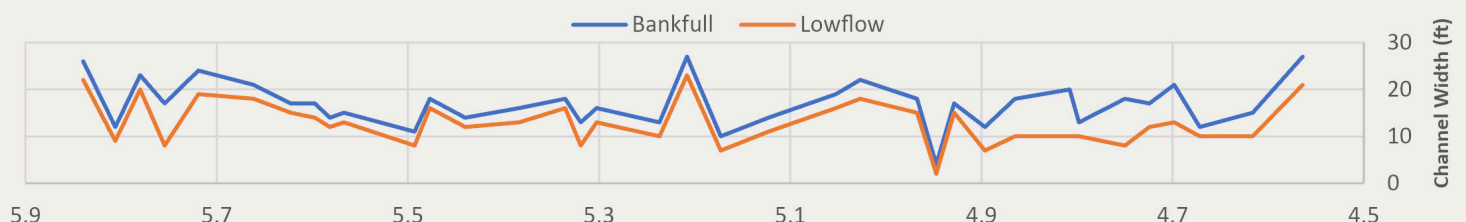


REACH G

Channel Depth



Channel Width



← FLOW DIRECTION

Creek Mile (5.81 at Tailwater, 4.56 at Headwater)

← FLOW DIRECTION

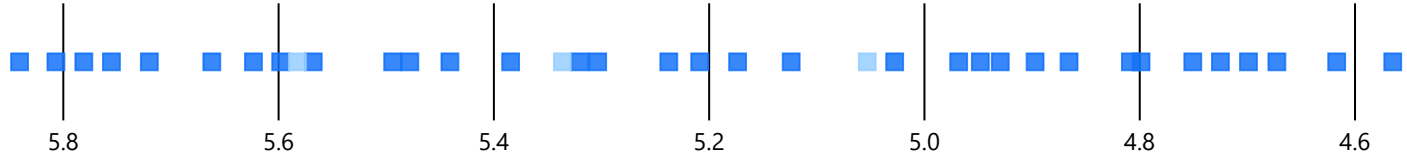
Classification Scheme for SVAP Parameters

Color Classification				
SVAP Score (0-10)	0 - 2.5	2.6 - 5	5.1 - 7.5	7.6 - 10

REACH G

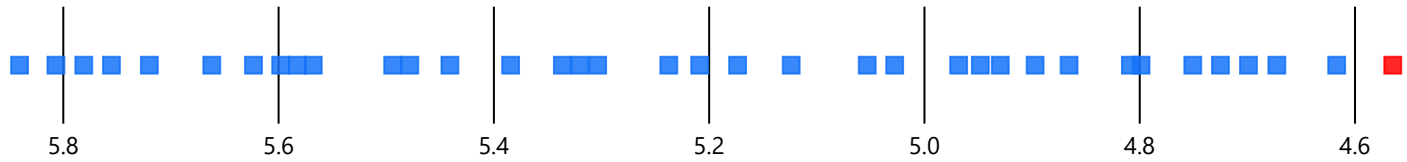
Channel Conditions

Score ■ Excellent ■ Good



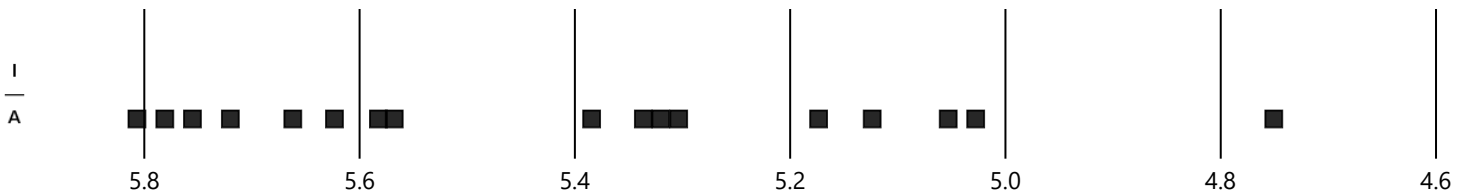
Stream Bank Hardening

■ No ■ Yes/Hard Structures



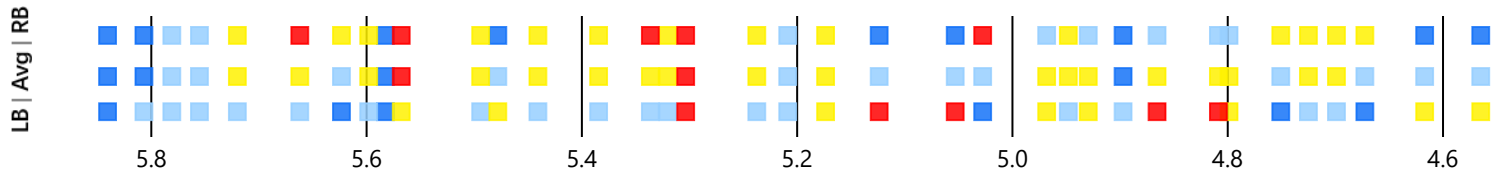
Aggradation/Incision

■ Aggradation ▲ Incision



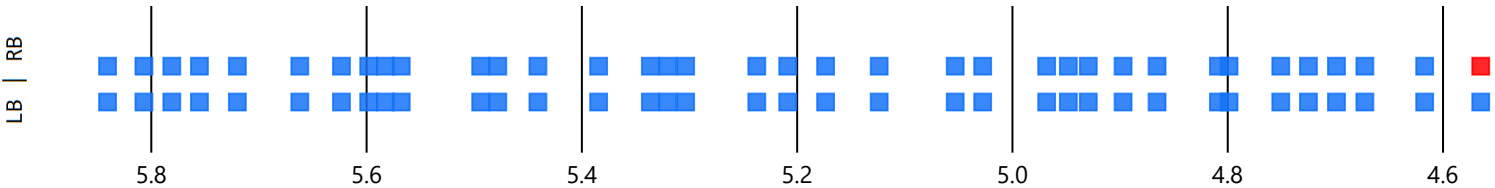
Bank Stability

Score ■ Excellent ■ Good ■ Mediocre ■ Poor



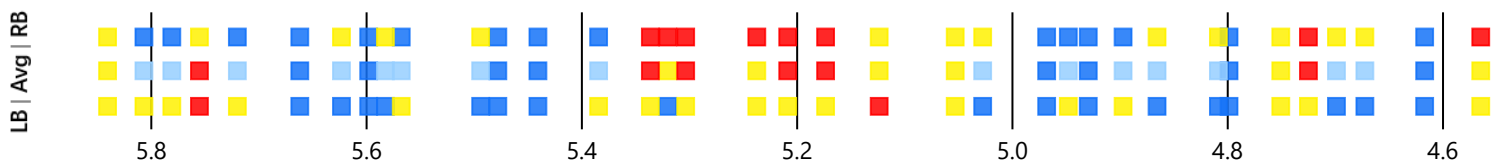
Bank Condition

■ Hardened Structure ■ Natural



Riparian Zone

Score ■ Excellent ■ Good ■ Mediocre ■ Poor



REACH G

Water Appearance

Score ■ Excellent ■ Good



Nutrient Enrichment

■ Mild

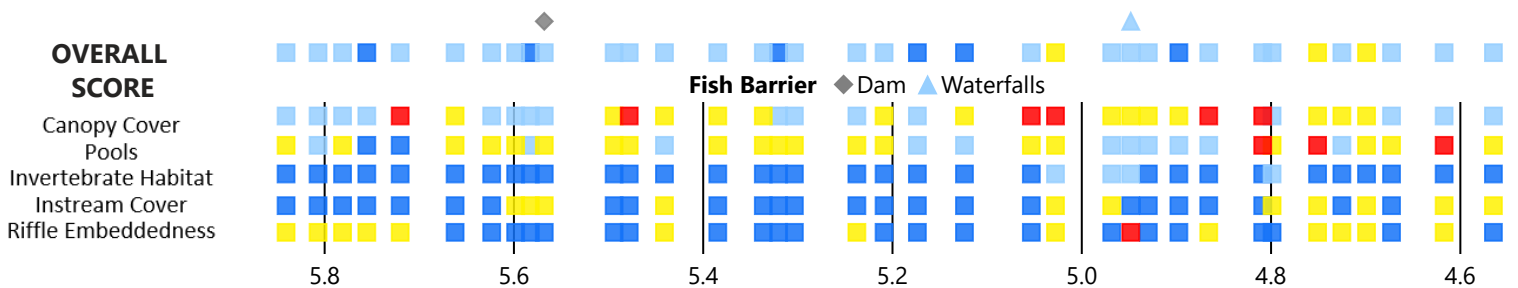
Notes ● Algal Growth



Fish Habitat

Score ■ Excellent ■ Good ■ Mediocre ■ Poor

Note: Overall Score of Fish Habitat was calculated by averaging scores for the five variables shown below.



Manure Presence

■ None



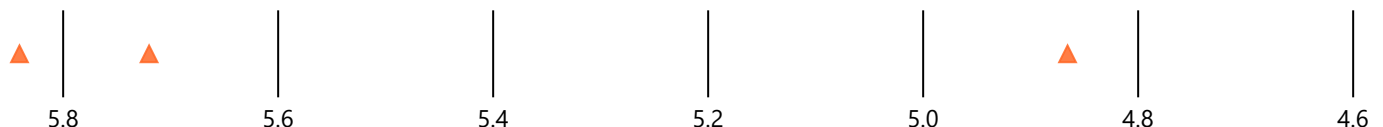
Invasive Species

None Observed



Aquatic Vegetation

▲ Emergent



OVERALL SVAP RATING

UNNAMED TRIBUTARY TO LAKE ERIE

Score ■ Excellent ■ Good



Creek Mile (5.81 at Tailwater, 4.56 at Headwater)

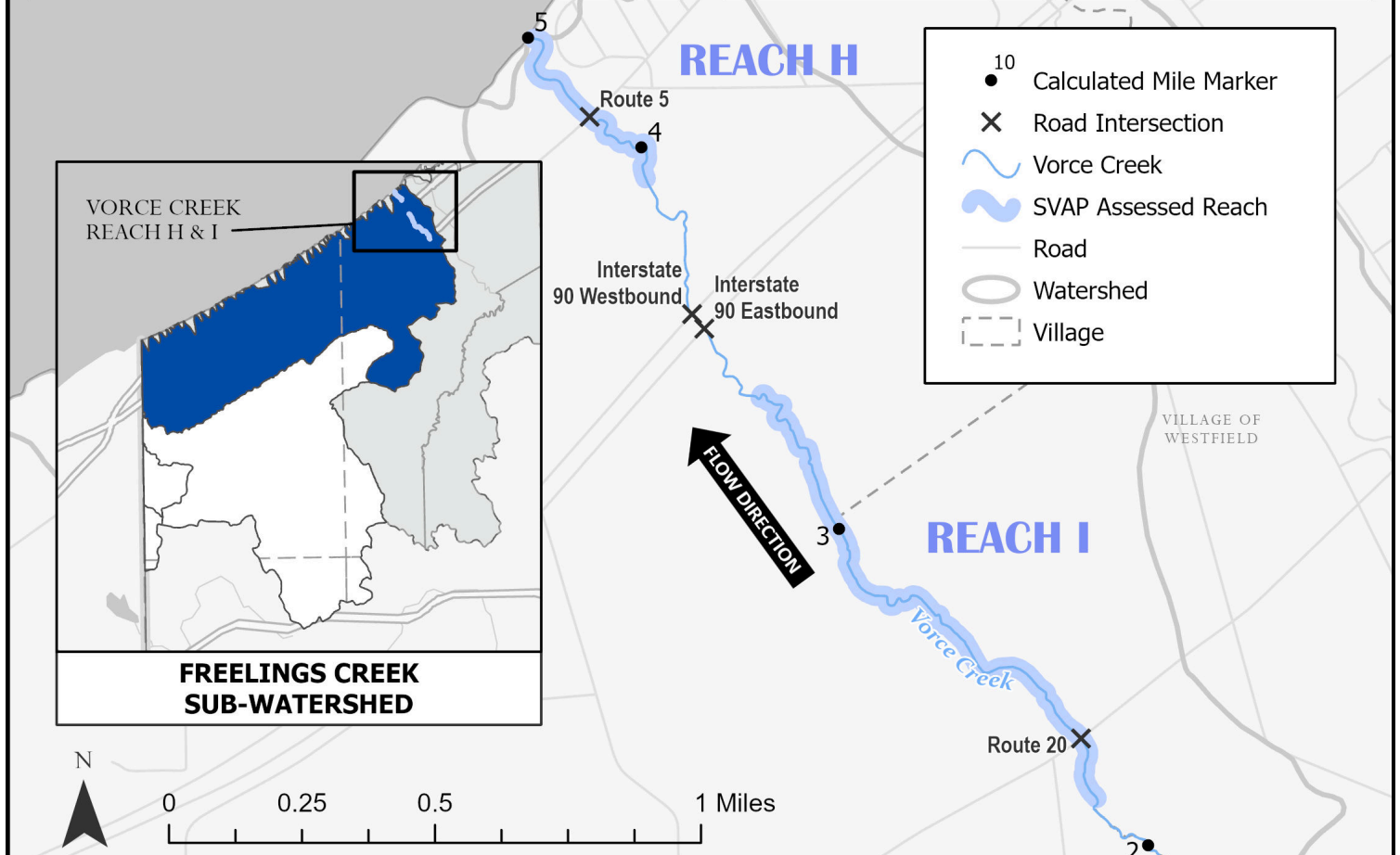


VORCE CREEK

STREAM VISUAL ASSESSMENT PROTOCOL (SVAP) RESULTS
FOR REACH H & I

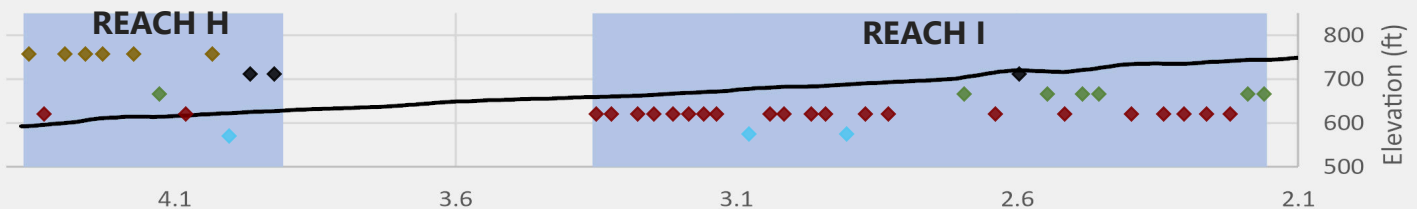
AVERAGE OVERALL SVAP RATING

REACH H: **6.7** REACH I: **7.5**

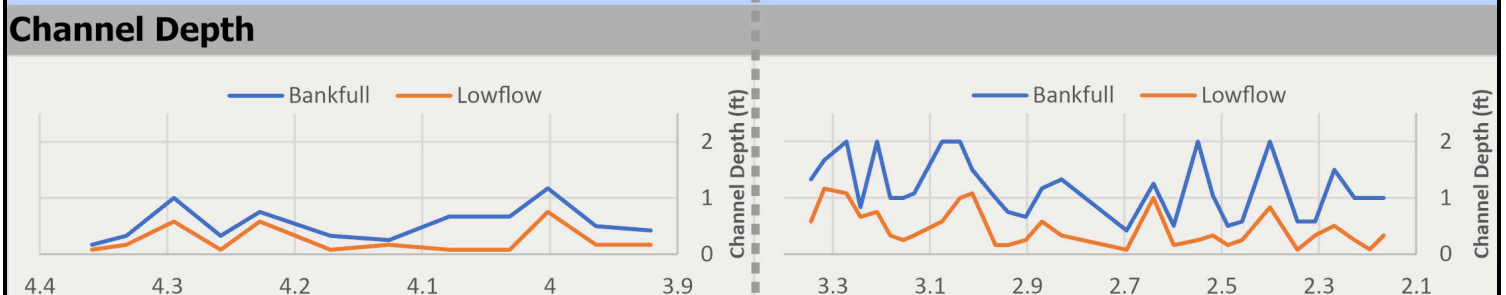


Elevation Profile

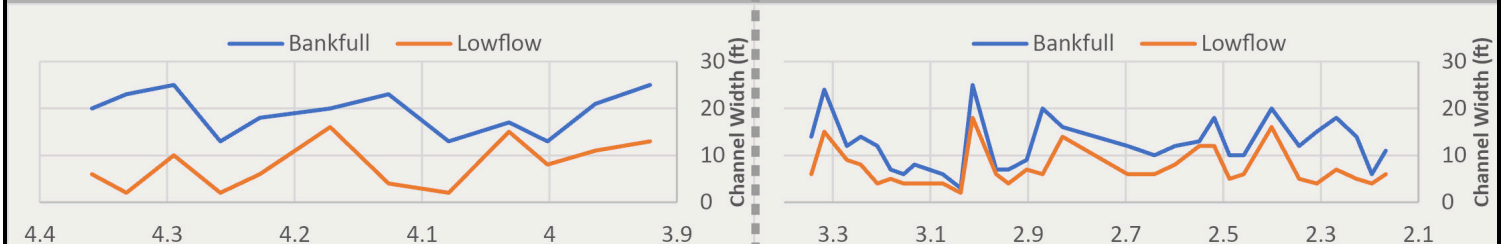
Substrate ◆ Bedrock/Concrete ◆ Boulder ◆ Cobble ◆ Gravel ◆ Sand



Channel Depth



Channel Width



← **FLOW DIRECTION** Creek Mile (Reach H: 4.36 at Tailwater, 3.92 at Headwater; Reach I: 3.34 at Tailwater, 2.16 at Headwater) **FLOW DIRECTION** →

Classification Scheme for SVAP Parameters

