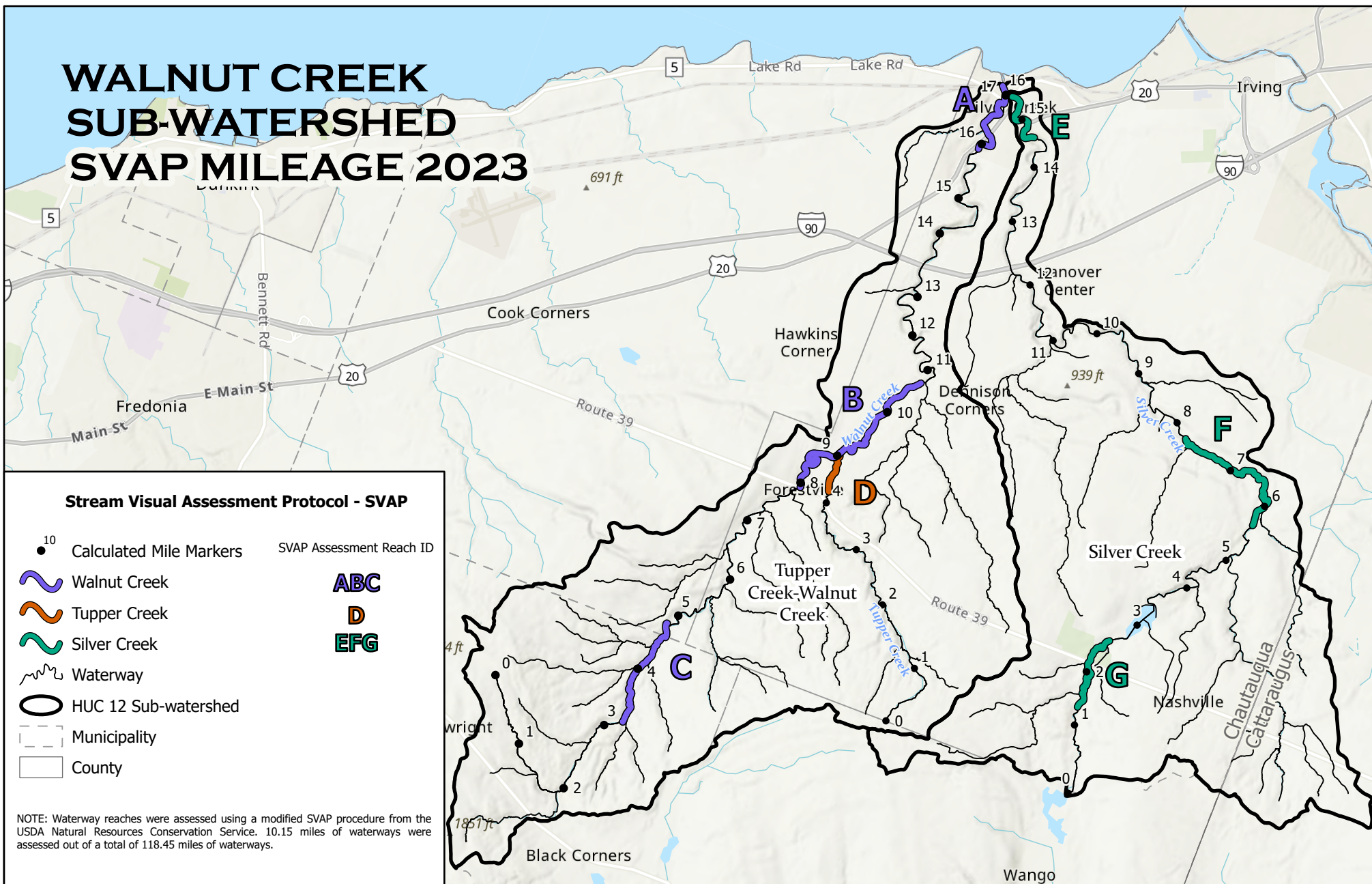


# WALNUT CREEK SUB-WATERSHED SVAP MILEAGE 2023



Department  
of State

This map was prepared with funding  
provided by the New York State  
Department of State under Title 11 of the  
Environmental Protection Fund.

Sources: Esri, TomTom, Garmin, FAO, NOAA, USGS, © OpenStreetMap contributors, and the GIS User Community, Sources: Esri, USGS, NGA, NASA, CGIAR, N Robinson, NCEAS, NLS, OS, NMA, Geodatastyrelsen, Rijkswaterstaat, GSA, Geoland, FEMA, Intermap and the GIS user community, USGS The National Map, 3D Elevation Program, USGS Earth Resources Observation & Science (EROS) Center: GMTED2010. Data refreshed April, 2025 Esri, Airbus DS, N Robinson, NCEAS, NLS, OS, NMA, Geodata styrelsen, Rijkswaterstaat, GSA, Geoland, FEMA, Intermap and the GIS user community



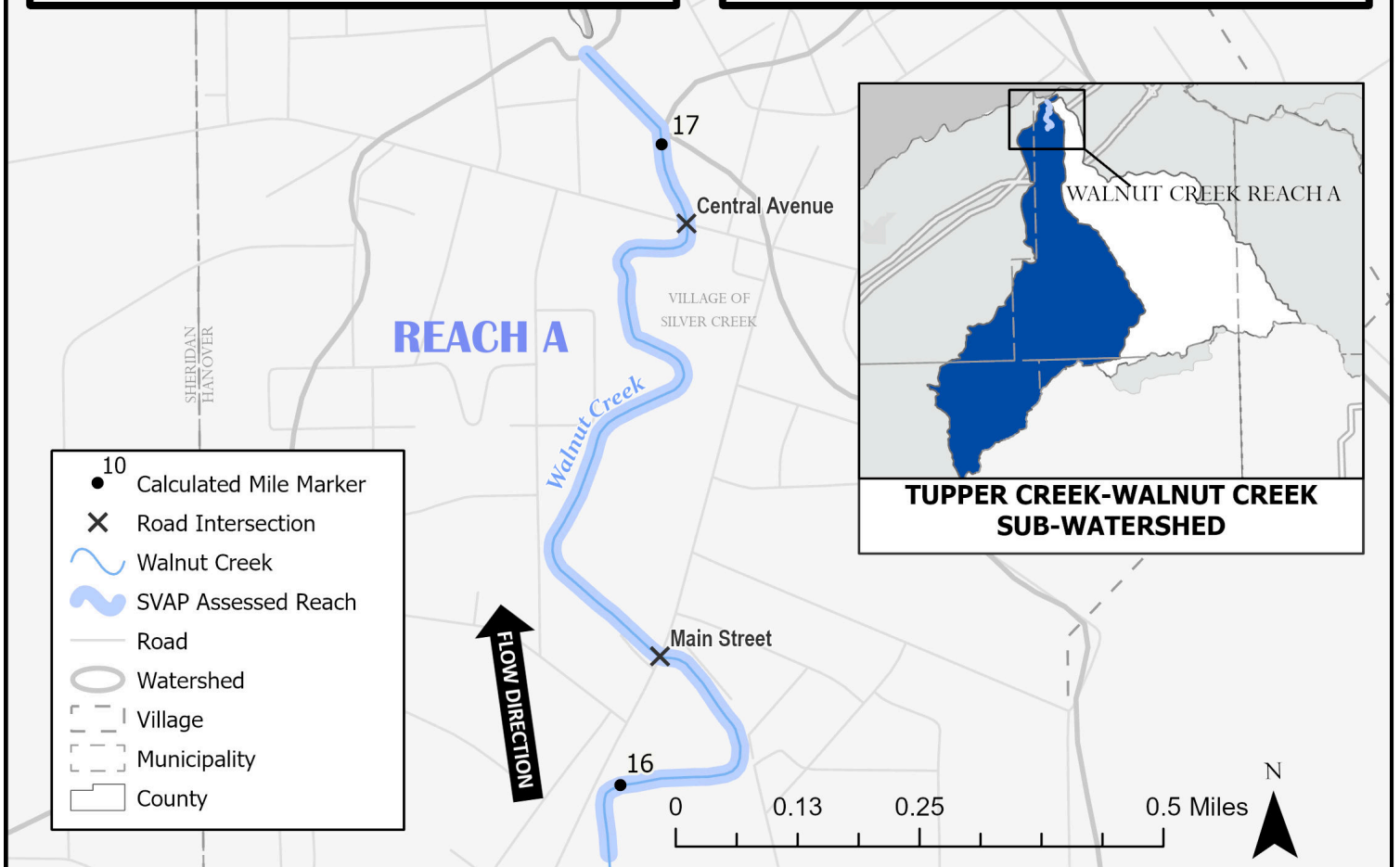
0 0.5 1 2 Miles



# WALNUT CREEK

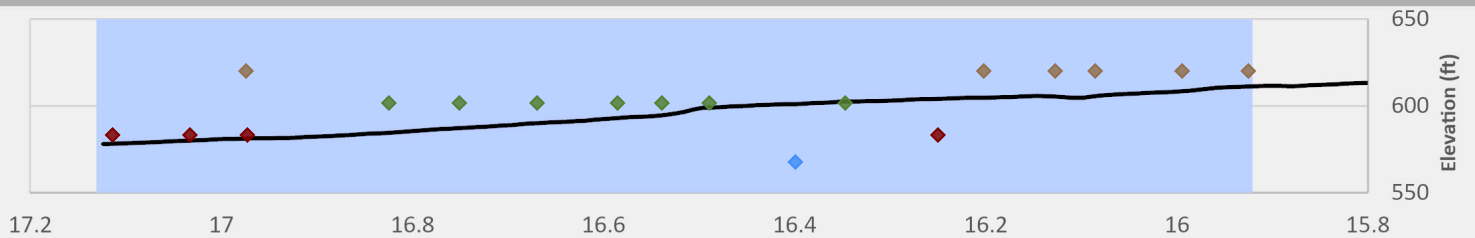
STREAM VISUAL ASSESSMENT PROTOCOL (SVAP) RESULTS  
FOR REACH A

AVERAGE OVERALL SVAP RATING: **6.5**



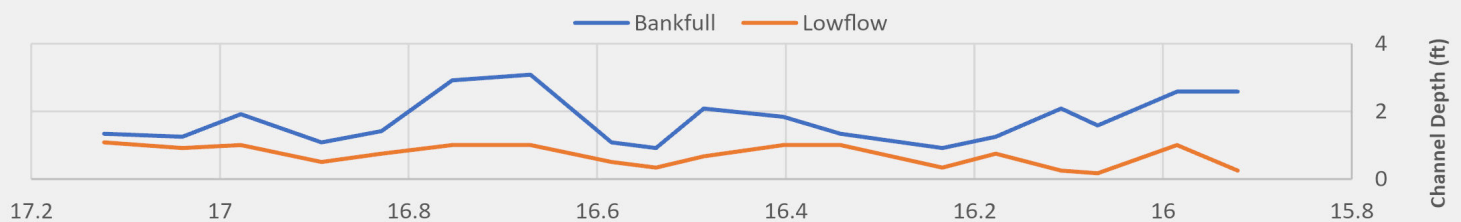
## Elevation Profile

Substrate ◆ Bedrock/Concrete ◆ Cobble ◆ Gravel ◆ Sand

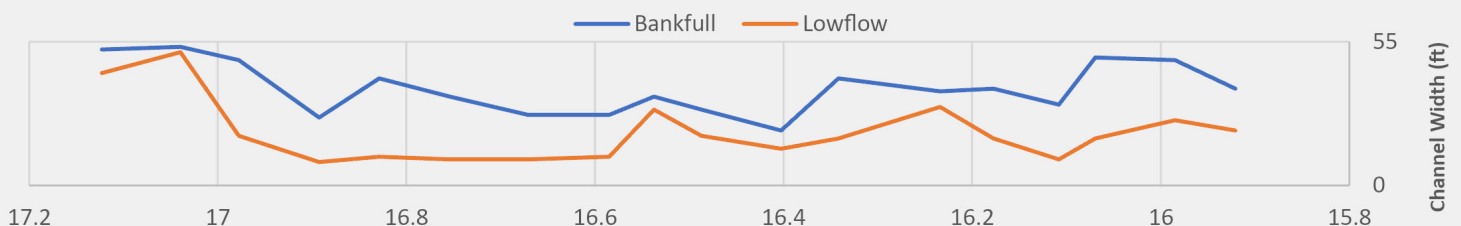


## REACH A

## Channel Depth



## Channel Width



← FLOW DIRECTION

Creek Mile (17.12 at Tailwater, 15.92 at Headwater)

← FLOW DIRECTION

# Classification Scheme for SVAP Parameters

Color Classification				
SVAP Score (0-10)	0 - 2.5	2.6 - 5	5.1 - 7.5	7.6 - 10

## REACH A

### Channel Conditions

Score ■ Excellent ■ Good ■ Mediocre



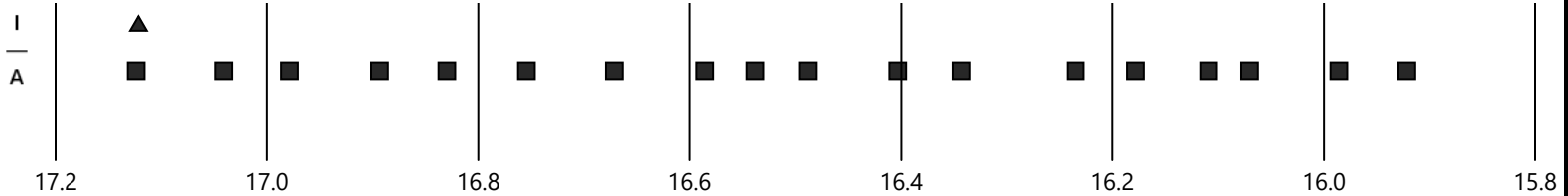
### Stream Bank Hardening

■ No ■ Yes



### Aggradation/Incision

■ Aggradation ▲ Incision



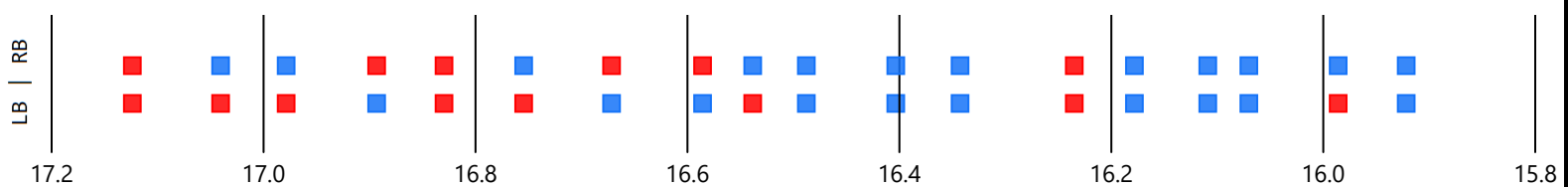
### Bank Stability

Score ■ Excellent ■ Good ■ Mediocre ■ Poor



### Bank Condition

■ Hardened Structure ■ Natural



### Riparian Zone

Score ■ Excellent ■ Good ■ Mediocre ■ Poor



← FLOW DIRECTION Creek Mile (17.12 at Tailwater, 15.92 at Headwater) ← FLOW DIRECTION

# REACH A

## Water Appearance

Score ■ Excellent ■ Good



## Nutrient Enrichment

■ Low ■ Mild ■ Moderate

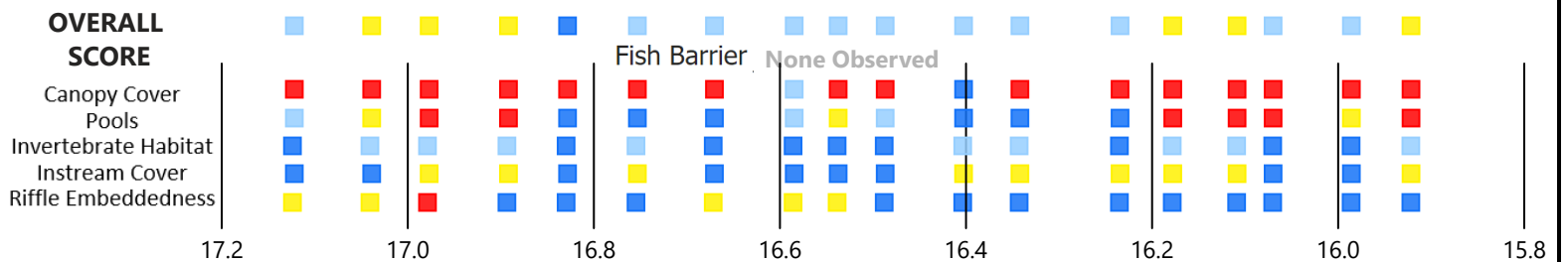
Notes ● Algal Growth ◆ Both ▲ Dense Aquatic Plant Beds



## Fish Habitat

Score ■ Excellent ■ Good ■ Mediocre ■ Poor

Note: Overall Score of Fish Habitat was calculated by averaging scores for the five variables shown below.



## Manure Presence

■ None ■ Extensive Manure/CFO Pipe



## Invasive Species

● Japanese Knotweed



## Aquatic Vegetation

■ Both ▲ Emergent ● Submerged



## OVERALL SVAP RATING

WALNUT CREEK

Score ■ Excellent ■ Good ■ Mediocre



← FLOW DIRECTION Creek Mile (17.12 at Tailwater, 15.92 at Headwater) FLOW DIRECTION →

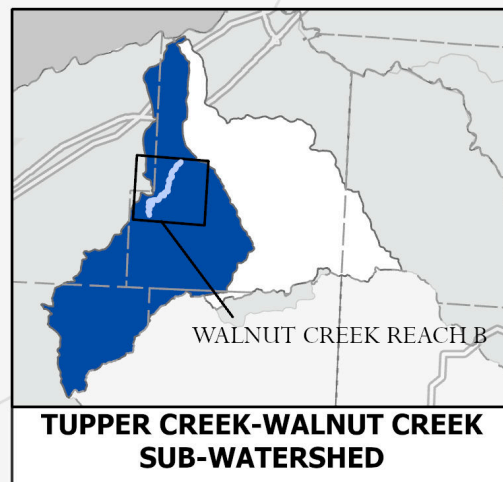
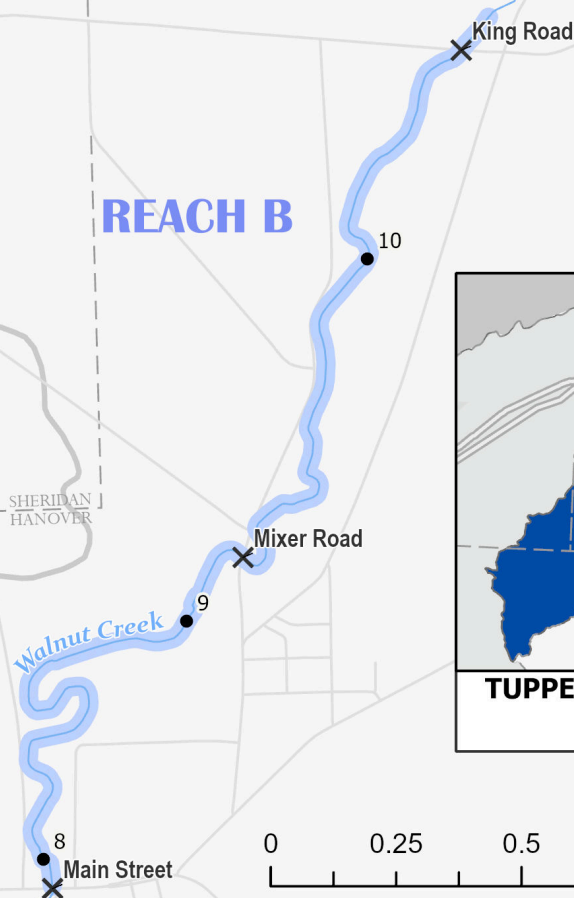


# WALNUT CREEK

STREAM VISUAL ASSESSMENT PROTOCOL (SVAP) RESULTS  
FOR REACH B

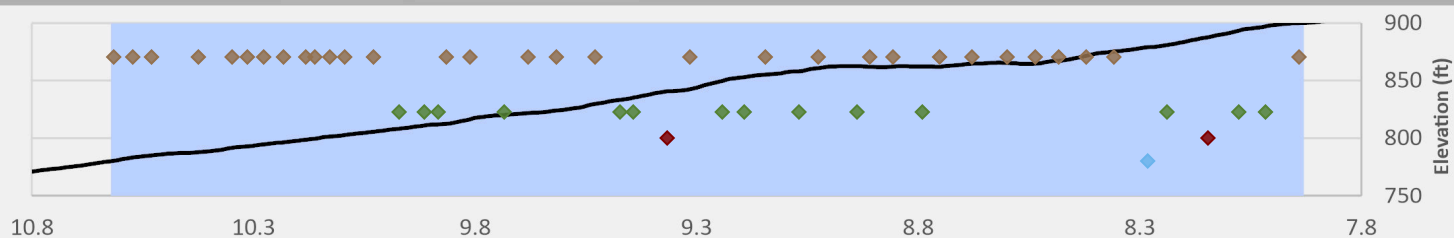
AVERAGE OVERALL SVAP RATING: **7.2**

- 10 Calculated Mile Marker
- ✕ Road Intersection
- ~ Walnut Creek
- ~ SVAP Assessed Reach
- Road
- Watershed
- - - Village
- - - Municipality
- County



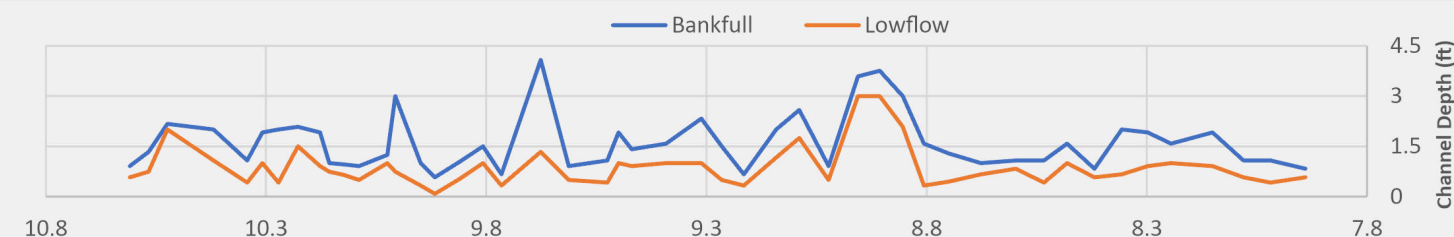
## Elevation Profile

Substrate: ◆ Bedrock/Concrete ◆ Cobble ◆ Gravel ◆ Sand

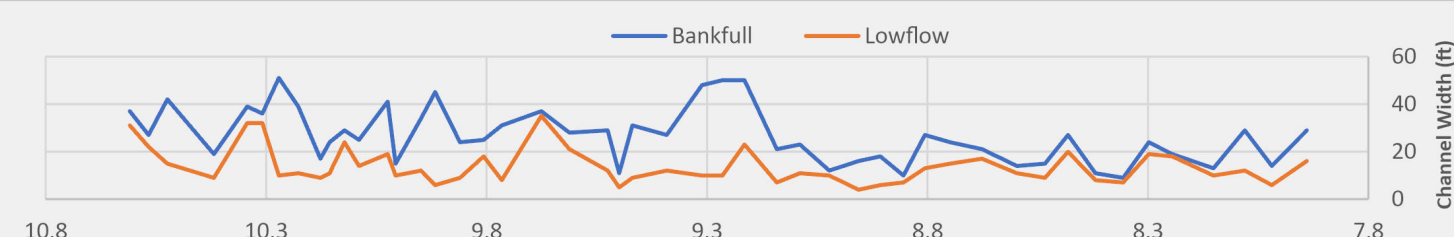


## REACH B

## Channel Depth



## Channel Width



← **FLOW DIRECTION** **Creek Mile (10.61 at Tailwater, 7.94 at Headwater)** **FLOW DIRECTION** →

# Classification Scheme for SVAP Parameters

Color Classification				
SVAP Score (0-10)	0 - 2.5	2.6 - 5	5.1 - 7.5	7.6 - 10

## REACH B

### Channel Conditions

Score ■ Excellent ■ Good



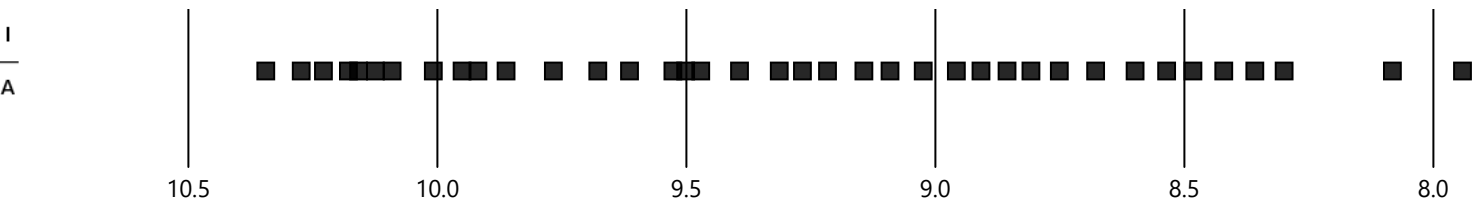
### Stream Bank Hardening

■ No



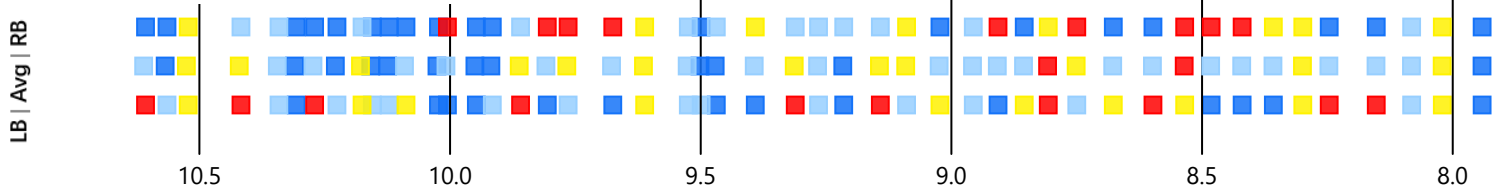
### Aggradation/Incision

■ Aggradation ▲ Incision



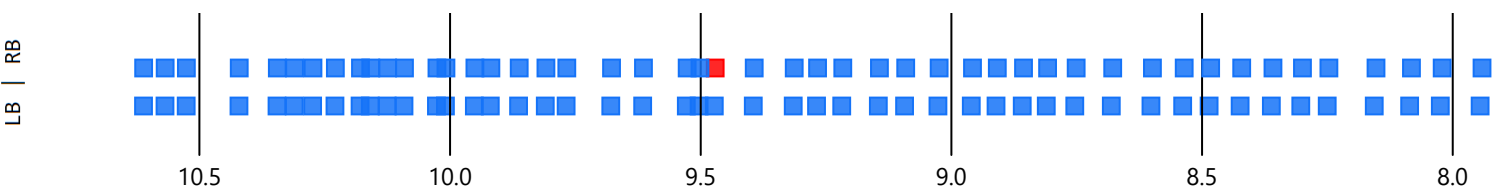
### Bank Stability

Score ■ Excellent ■ Good ■ Mediocre ■ Poor



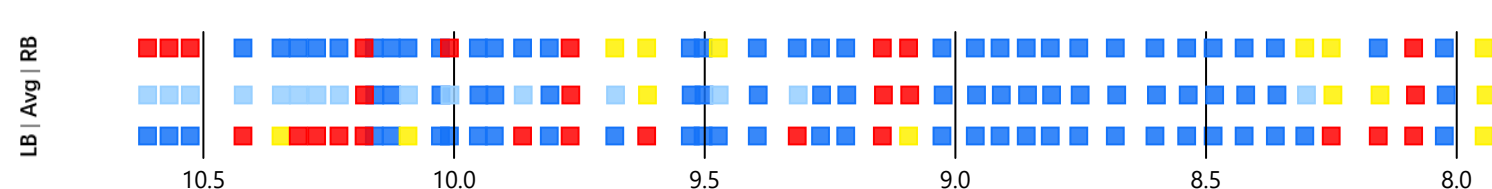
### Bank Condition

■ Hardened Structure ■ Natural



### Riparian Zone

Score ■ Excellent ■ Good ■ Mediocre ■ Poor



# REACH B

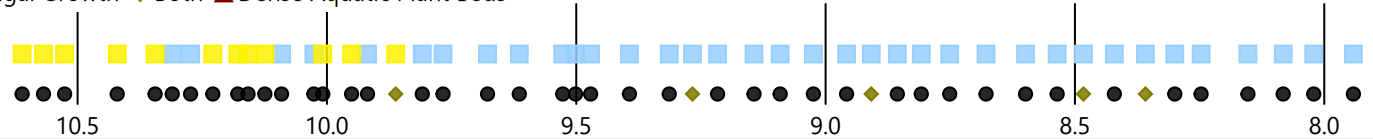
## Water Appearance

Score ■ Excellent ■ Good ■ Mediocre



## Nutrient Enrichment

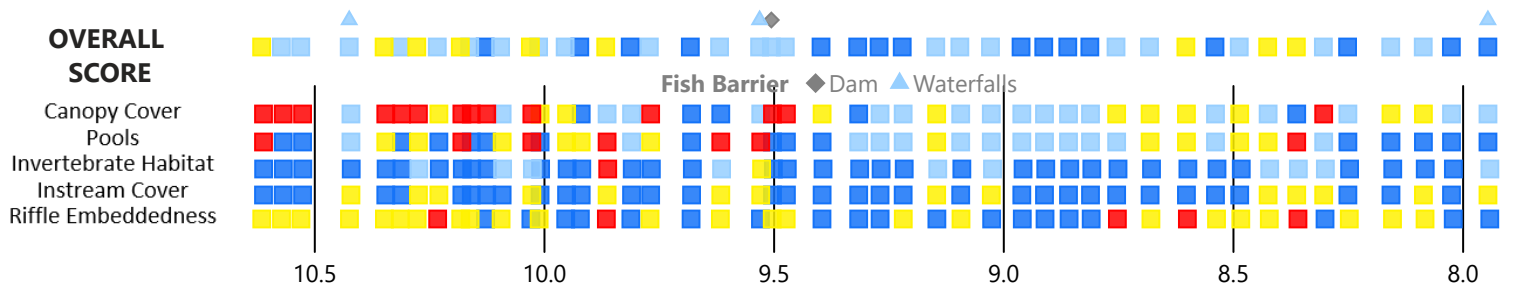
Score ■ Mild ■ Moderate  
 Notes ● Algal Growth ◆ Both ▲ Dense Aquatic Plant Beds



## Fish Habitat

Score ■ Excellent ■ Good ■ Mediocre ■ Poor

Note: Overall Score of Fish Habitat was calculated by averaging scores for the five variables shown below.



## Manure Presence

■ None



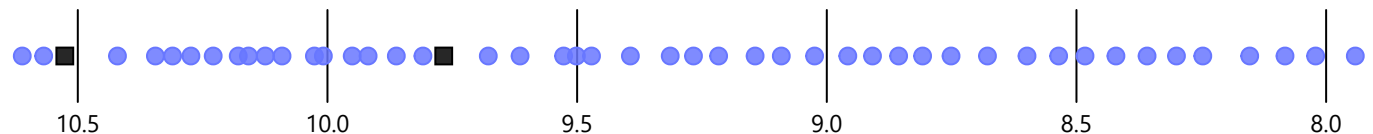
## Invasive Species

● Japanese Knotweed



## Aquatic Vegetation

■ Both ▲ Emergent ● Submerged



## OVERALL SVAP RATING

WALNUT CREEK

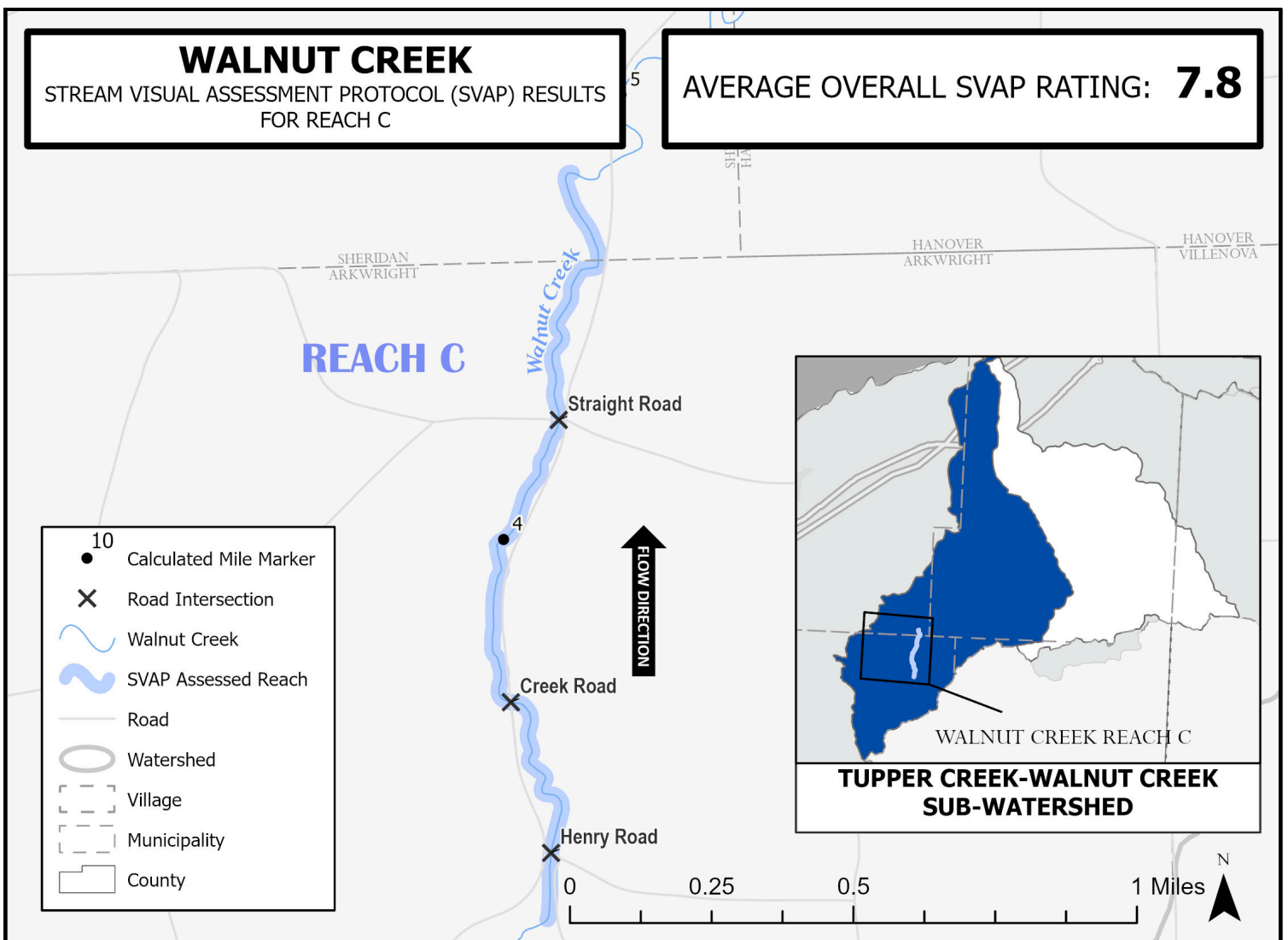
Score ■ Excellent ■ Good ■ Mediocre



# WALNUT CREEK

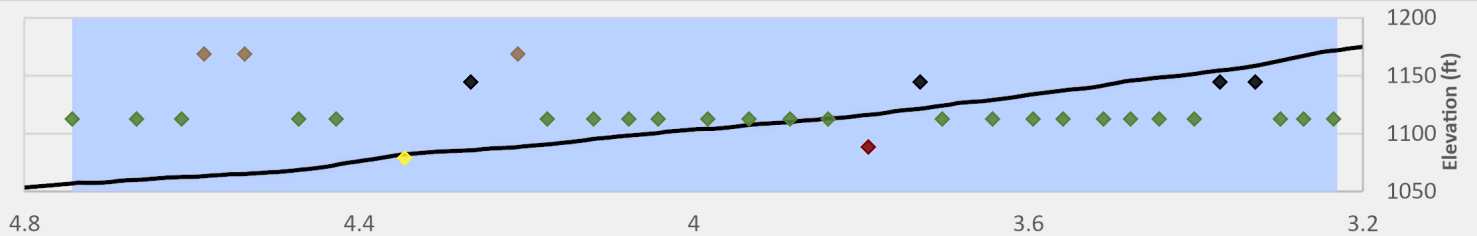
STREAM VISUAL ASSESSMENT PROTOCOL (SVAP) RESULTS  
FOR REACH C

AVERAGE OVERALL SVAP RATING: **7.8**



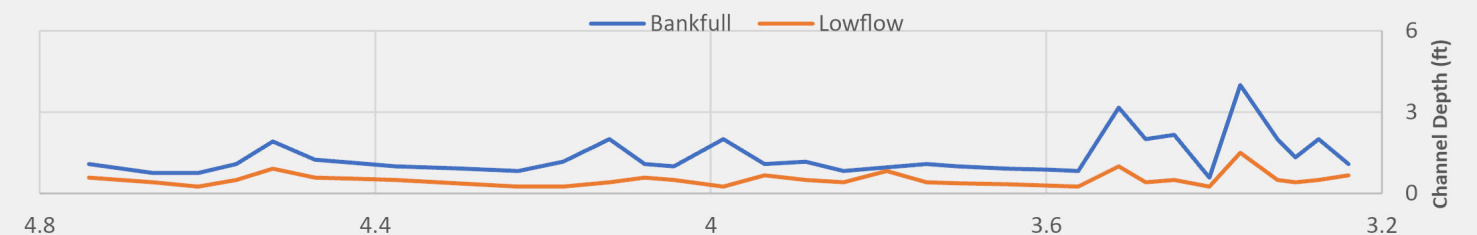
## Elevation Profile

Substrate ◆ Bedrock/Concrete ◆ Boulder ◆ Cobble ◆ Gravel ◆ Silt/Clay

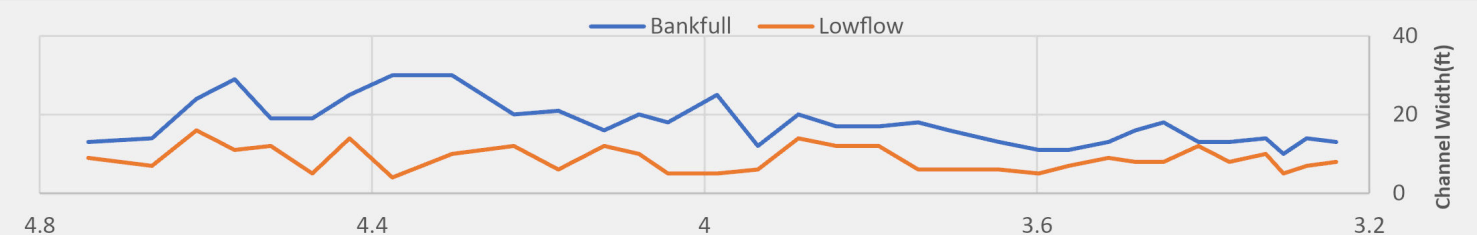


## REACH C

## Channel Depth



## Channel Width



← FLOW DIRECTION

Creek Mile (4.74 at Tailwater, 3.24 at Headwater)

← FLOW DIRECTION

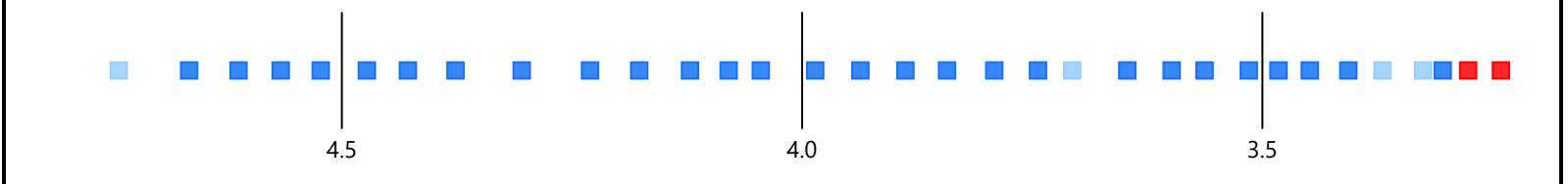
### Classification Scheme for SVAP Parameters

<b>Color Classification</b>				
<b>SVAP Score (0-10)</b>	0 - 2.5	2.6 - 5	5.1 - 7.5	7.6 - 10

REACH C

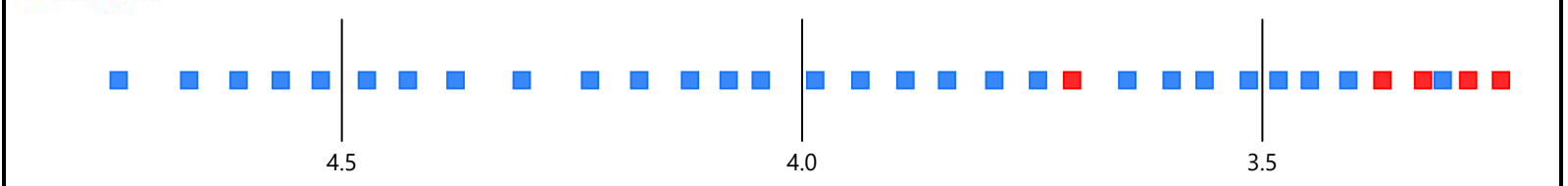
Channel Conditions	
--------------------	--

**Score** ■ Excellent ■ Good ■ Poor



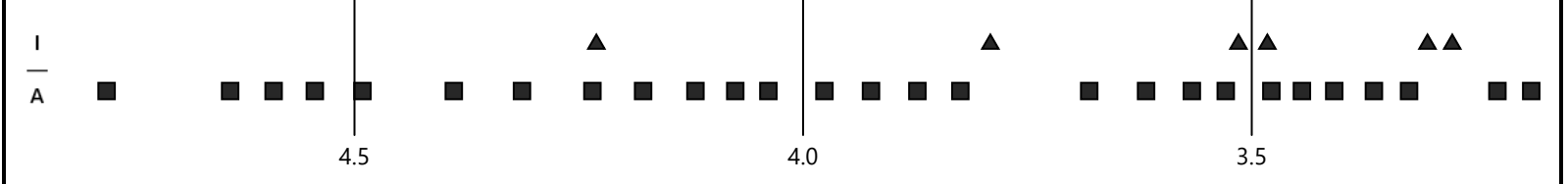
## Stream Bank Hardening

☐ No ☐ Yes



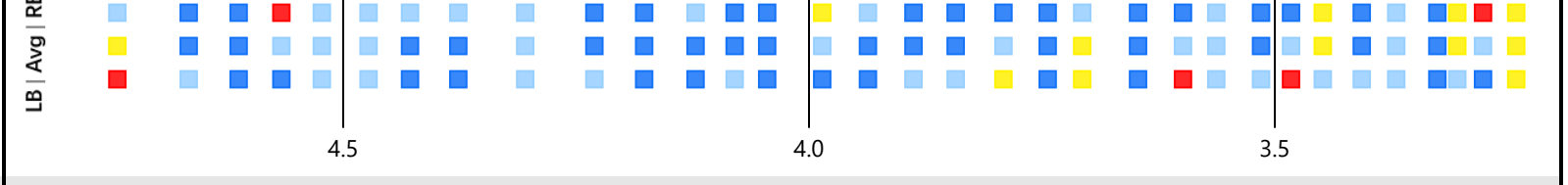
Aggradation/Incision

■ Aggradation ▲ Incision

[illegible]

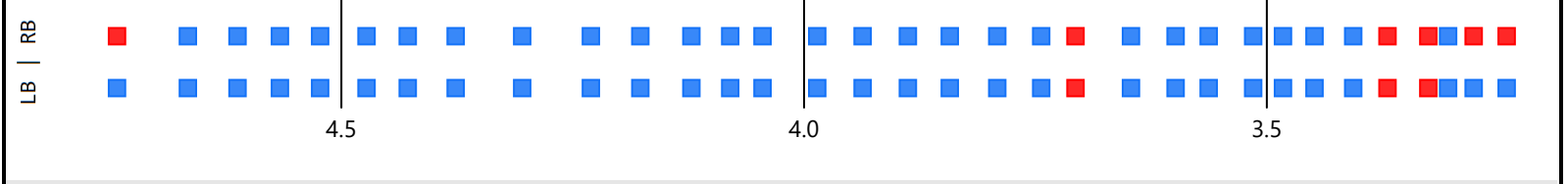
Bank Stability	
----------------	--

**Score** ■ Excellent ■ Good ■ Mediocre ■ Poor



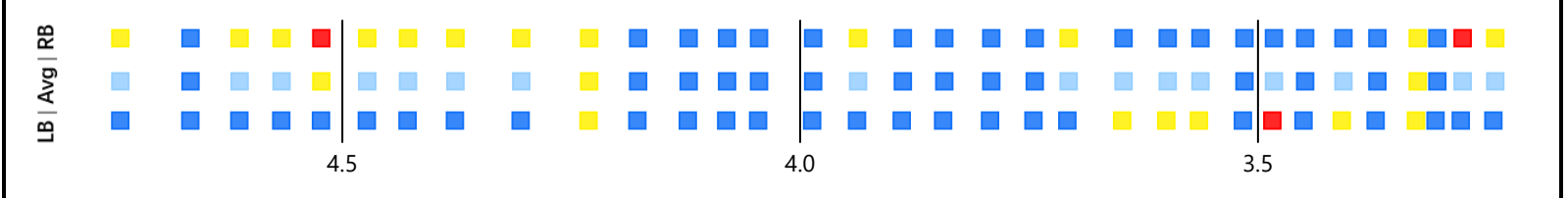
Bank Condition
----------------

■ Hardened Structure ■ Natural



## Riparian Zone

**Score** ■ Excellent ■ Good ■ Mediocre ■ Poor



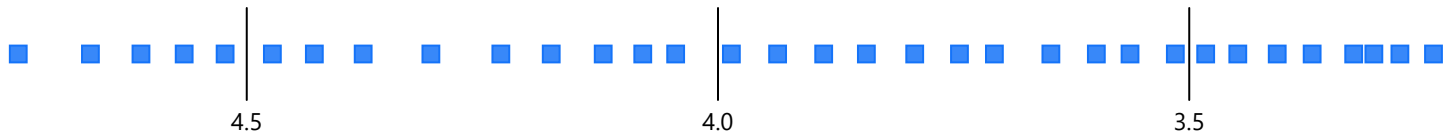
← FLOW DIRECTION Creek Mile (4.74 at Tailwater, 3.24 at Headwater) FLOW DIRECTION →



# REACH C

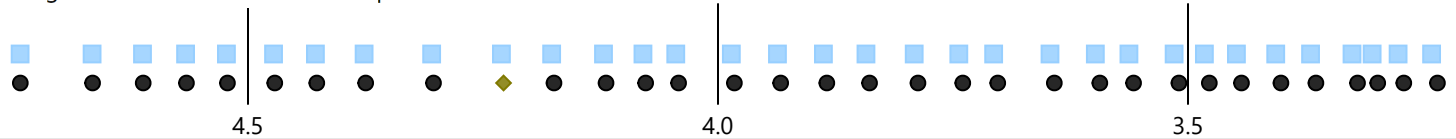
## Water Appearance

Score ■ Excellent



## Nutrient Enrichment

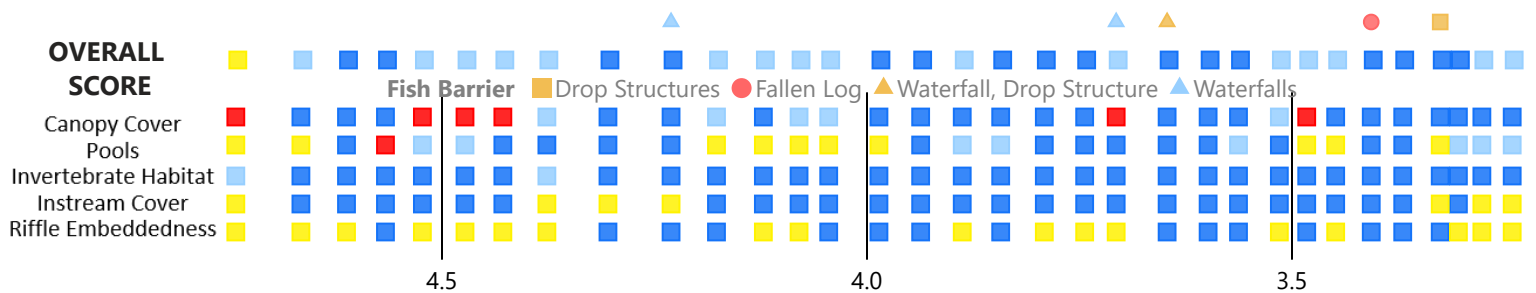
Notes ■ Mild ● Algal Growth ◆ Both ▲ Dense Aquatic Plant Beds



## Fish Habitat

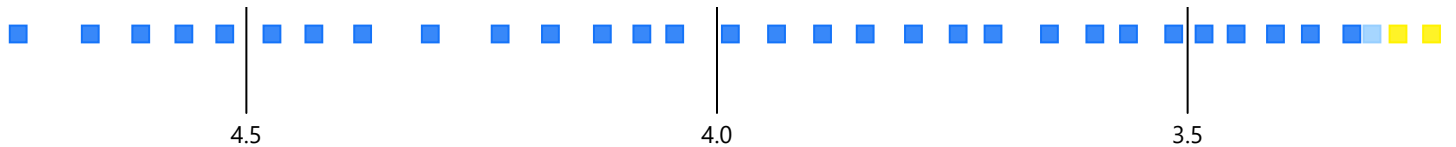
Score ■ Excellent ■ Good ■ Mediocre ■ Poor

Note: Overall Score of Fish Habitat was calculated by averaging scores for the five variables shown below.



## Manure Presence

■ None ■ Evidence of Animals in Zone ■ Manure Present



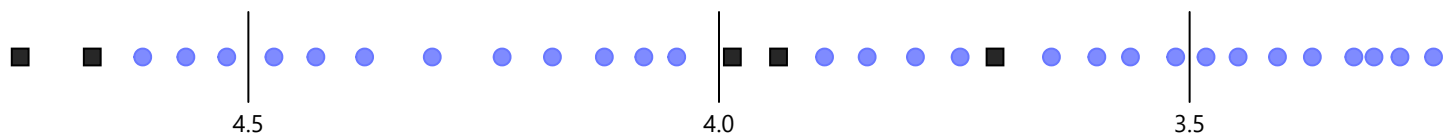
## Invasive Species

None Observed



## Aquatic Vegetation

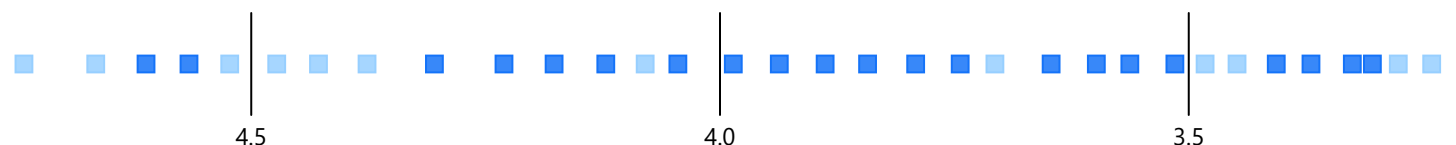
■ Both ▲ Emergent ● Submerged



## OVERALL SVAP RATING

WALNUT CREEK

Score ■ Excellent ■ Good



FLOW DIRECTION

Creek Mile (4.74 at Tailwater, 3.24 at Headwater)

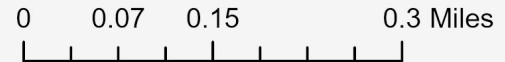
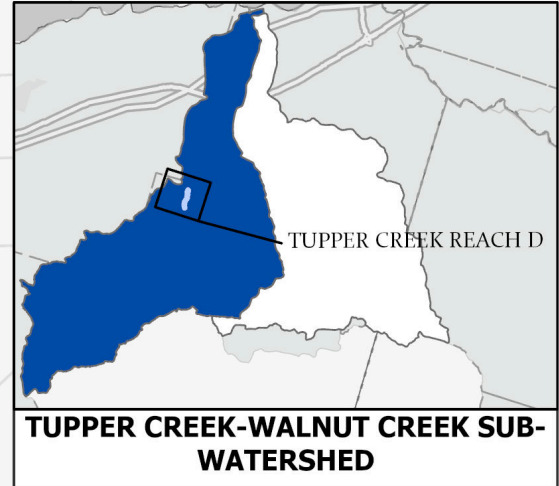
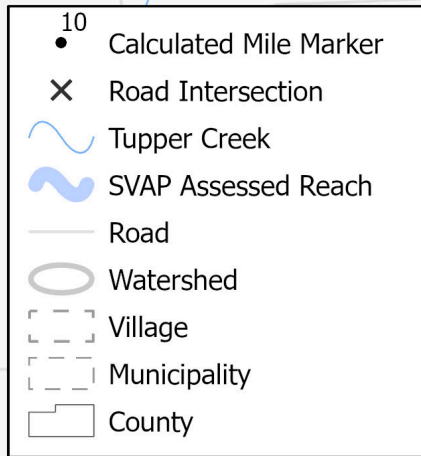
FLOW DIRECTION

# TUPPER CREEK

STREAM VISUAL ASSESSMENT PROTOCOL (SVAP) RESULTS  
FOR REACH D

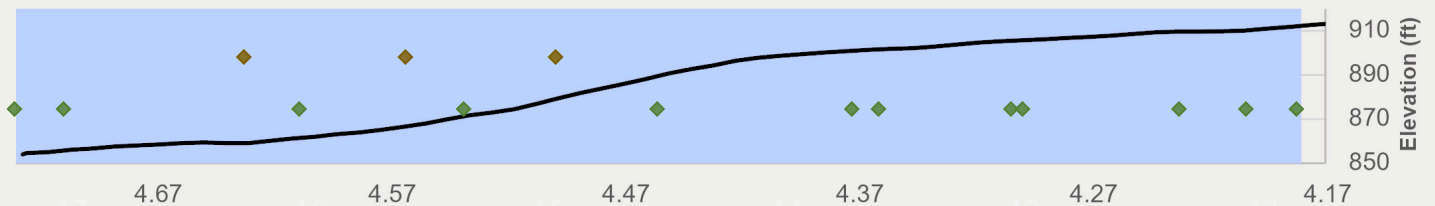
AVERAGE OVERALL SVAP RATING: **7.5**

## REACH D



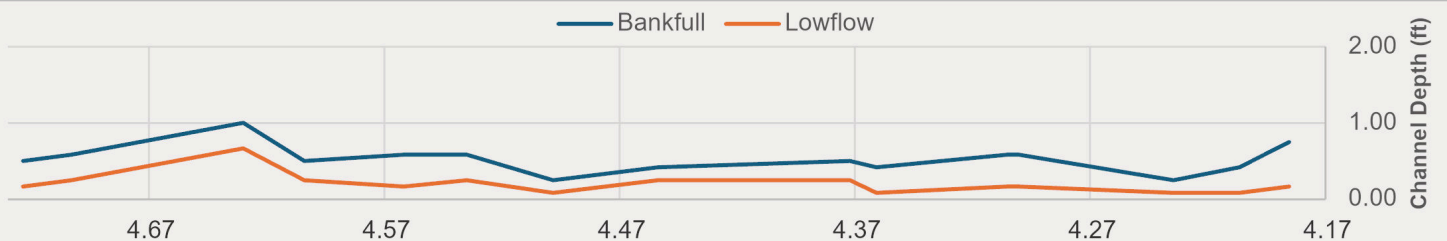
### Elevation Profile Substrate

◆ Bedrock/Concrete ◆ Cobble

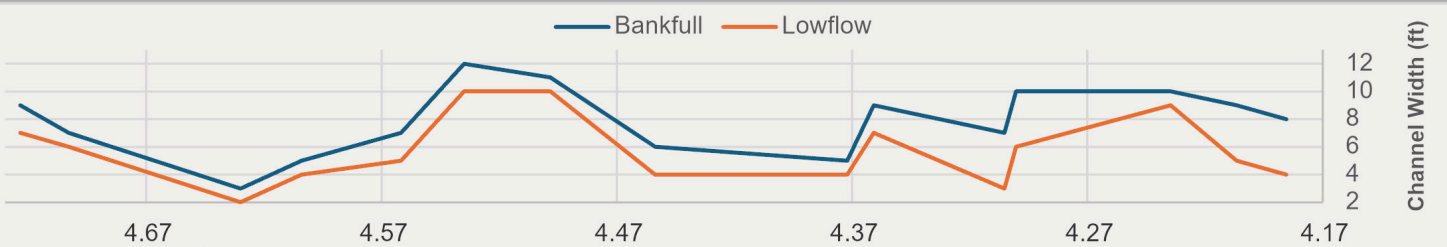


## REACH D

### Channel Depth



### Channel Width



Creek Mile (4.72 at Tailwater, 4.19 at Headwater)



# Classification Scheme for SVAP Parameters

Color Classification				
SVAP Score (0-10)	0 - 2.5	2.6 - 5	5.1 - 7.5	7.6 - 10

## REACH D

### Channel Conditions

Score ■ Excellent ■ Good ■ Mediocre ■ Poor



### Stream Bank Hardening

■ No ■ Yes



### Aggradation/Incision

■ Aggradation ▲ Incision



### Bank Stability

■ Excellent ■ Good ■ Mediocre ■ Poor



### Bank Condition

■ Hardened Structure ■ Natural



### Riparian Zone

■ Excellent ■ Good ■ Mediocre ■ Poor



Creek Mile (4.72 at Tailwater, 4.19 at Headwater)



# REACH D

## Water Appearance

Score ■ Excellent ■ Good



## Nutrient Enrichment

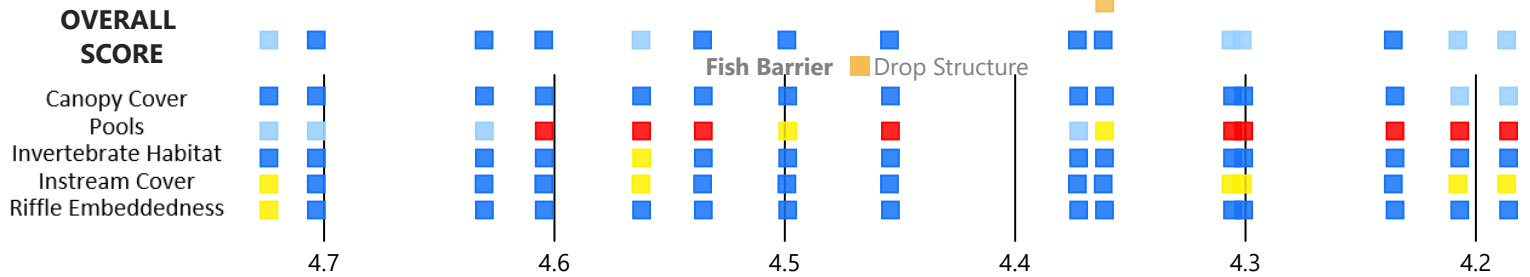
■ Low ■ Mild

NE Notes ● Algal Growth ▲ Dense Aquatic Plant Beds



## Fish Habitat

Score ■ Excellent ■ Good ■ Mediocre ■ Poor



## Manure Presence

■ None ■ Evidence of Animals in Zone



## Japanese Knotweed

● Japanese Knotweed



## Aquatic Vegetation

■ Both ▲ Emergent ● Submerged



## OVERALL SVAP RATING

TUPPER CREEK

Score ■ Excellent ■ Good



← FLOW DIRECTION

Creek Mile (4.72 at Tailwater, 4.19 at Headwater)

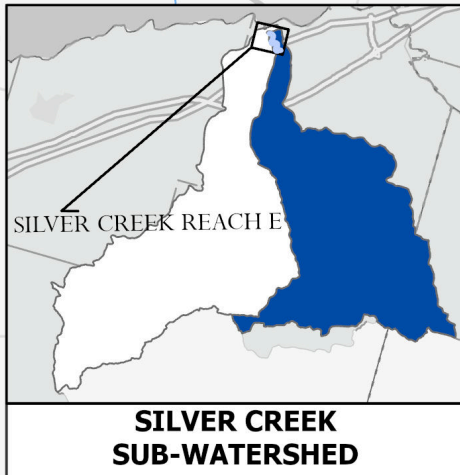
← FLOW DIRECTION

# SILVER CREEK

STREAM VISUAL ASSESSMENT PROTOCOL (SVAP) RESULTS  
FOR REACH E

AVERAGE OVERALL SVAP RATING: **6.0**

- 10 Calculated Mile Marker
- X Road Intersection
- Silver Creek
- SVAP Assessed Reach
- Road
- Watershed
- Village
- Municipality
- County

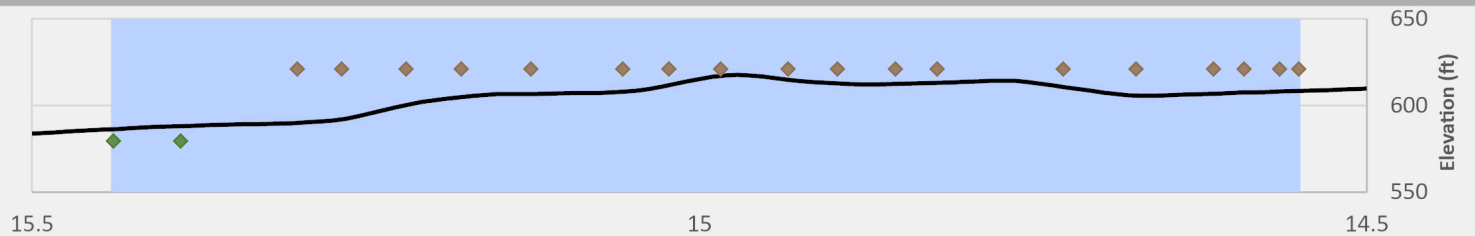


0 0.05 0.1 0.2 Miles

REACH E

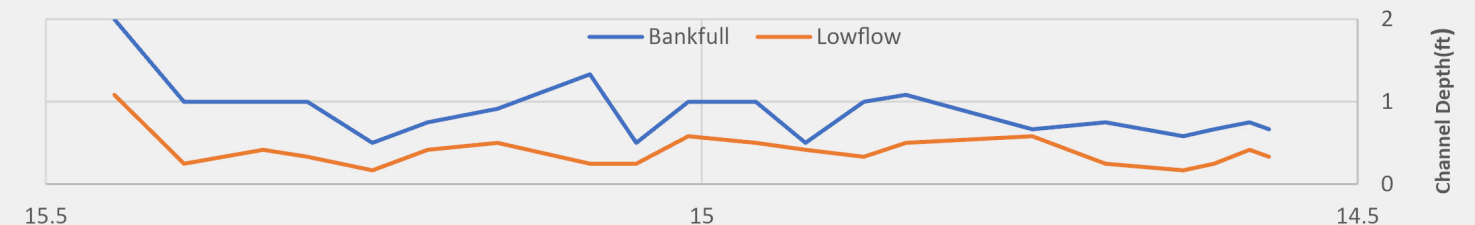
## Elevation Profile

Substrate ◆ Bedrock/Concrete ◆ Cobble

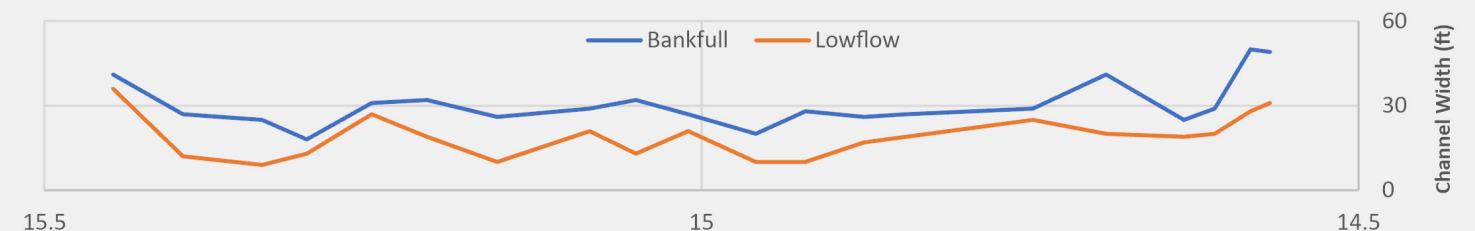


REACH E

## Channel Depth



## Channel Width



← FLOW DIRECTION

Creek Mile (15.45 at Tailwater, 14.57 at Headwater)

← FLOW DIRECTION



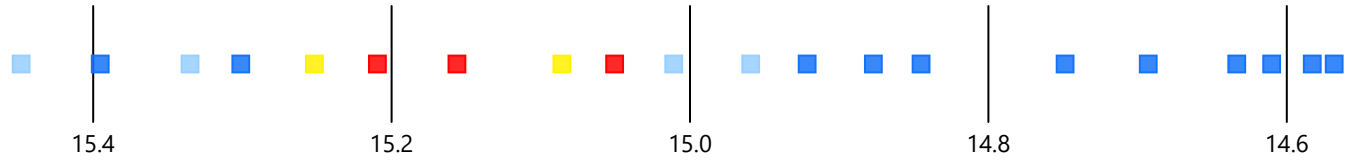
# Classification Scheme for SVAP Parameters

Color Classification				
SVAP Score (0-10)	0 - 2.5	2.6 - 5	5.1 - 7.5	7.6 - 10

## REACH E

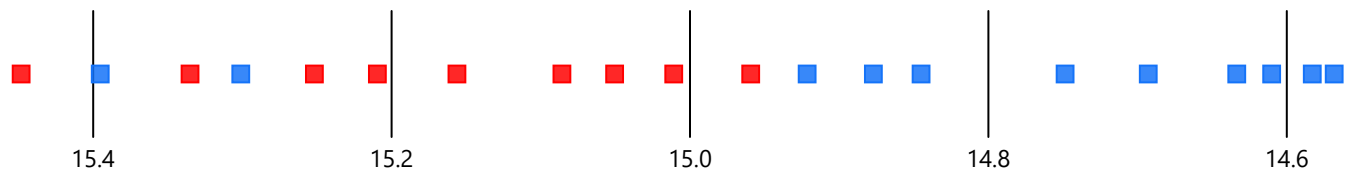
### Channel Conditions

Score ■ Excellent ■ Good ■ Mediocre ■ Poor



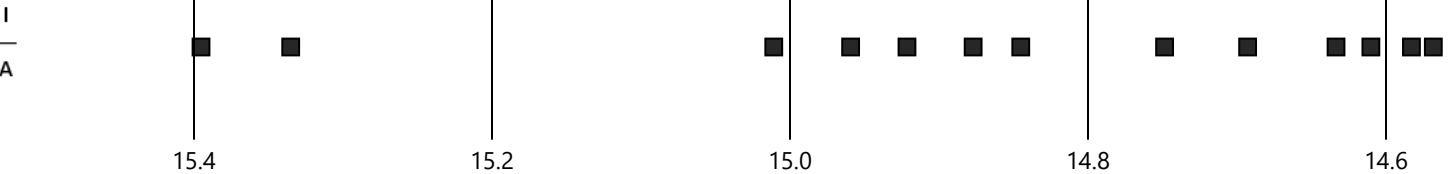
### Stream Bank Hardening

■ No ■ Yes



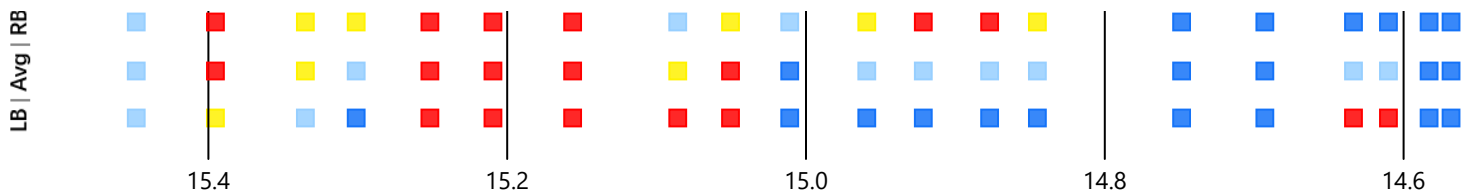
### Aggradation/Incision

■ Aggradation ▲ Incision



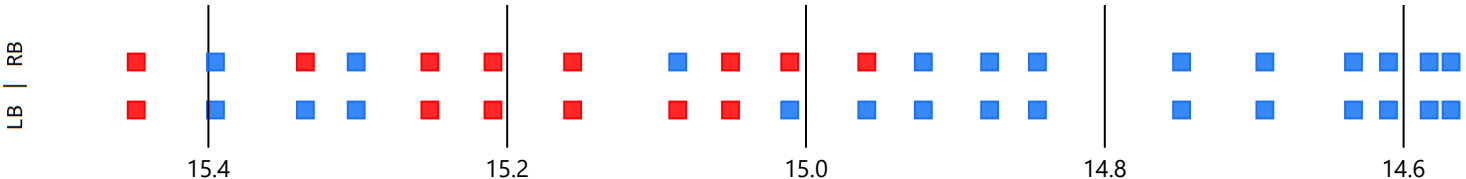
### Bank Stability

Score ■ Excellent ■ Good ■ Mediocre ■ Poor



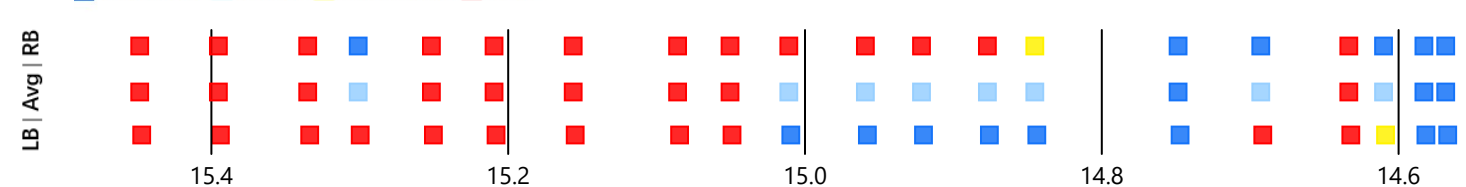
### Bank Condition

■ Hardened Structure ■ Natural



### Riparian Zone

Score ■ Excellent ■ Good ■ Mediocre ■ Poor

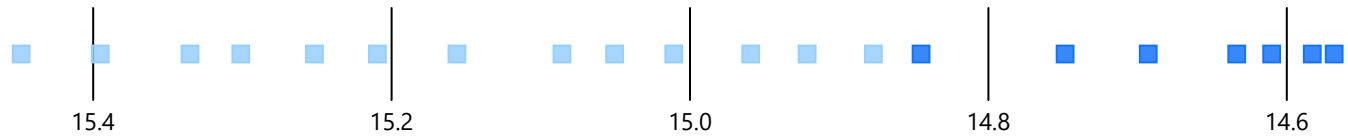


← FLOW DIRECTION Creek Mile (15.45 at Tailwater, 14.57 at Headwater) ← FLOW DIRECTION

# REACH E

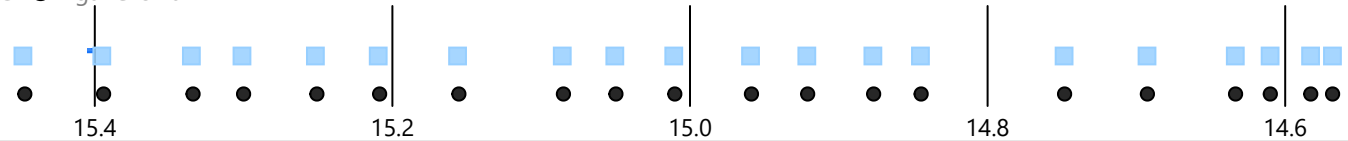
## Water Appearance

Score ■ Excellent ■ Good



## Nutrient Enrichment

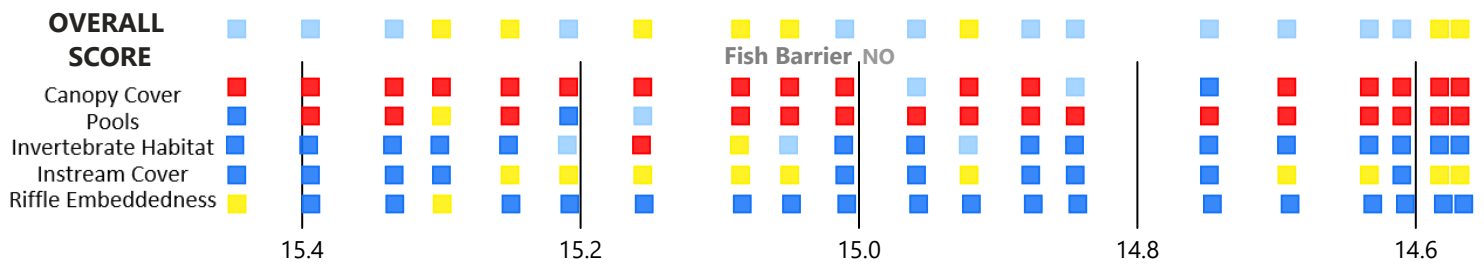
■ Mild  
NE Notes ● Algal Growth



## Fish Habitat

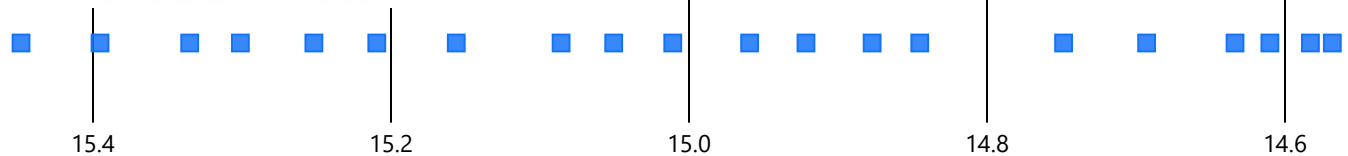
Score ■ Excellent ■ Good ■ Mediocre ■ Poor

Note: Overall Score of Fish Habitat was calculated by averaging scores for the five variables shown below.



## Manure Presence

■ None ■ Evidence of Animals in Zone



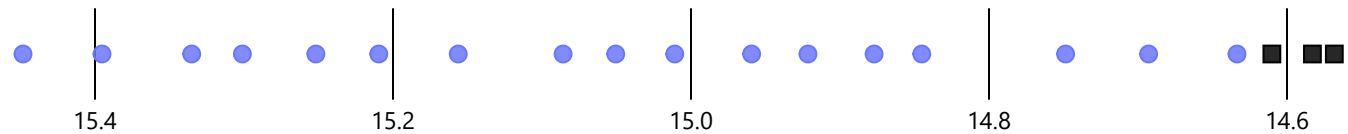
## Invasive Species

● Japanese Knotweed



## Aquatic Vegetation

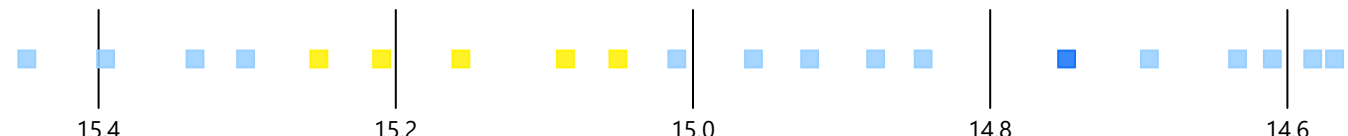
■ Both ▲ Emergent ● Submerged



## OVERALL SVAP RATING

SILVER CREEK

Score ■ Excellent ■ Good ■ Mediocre

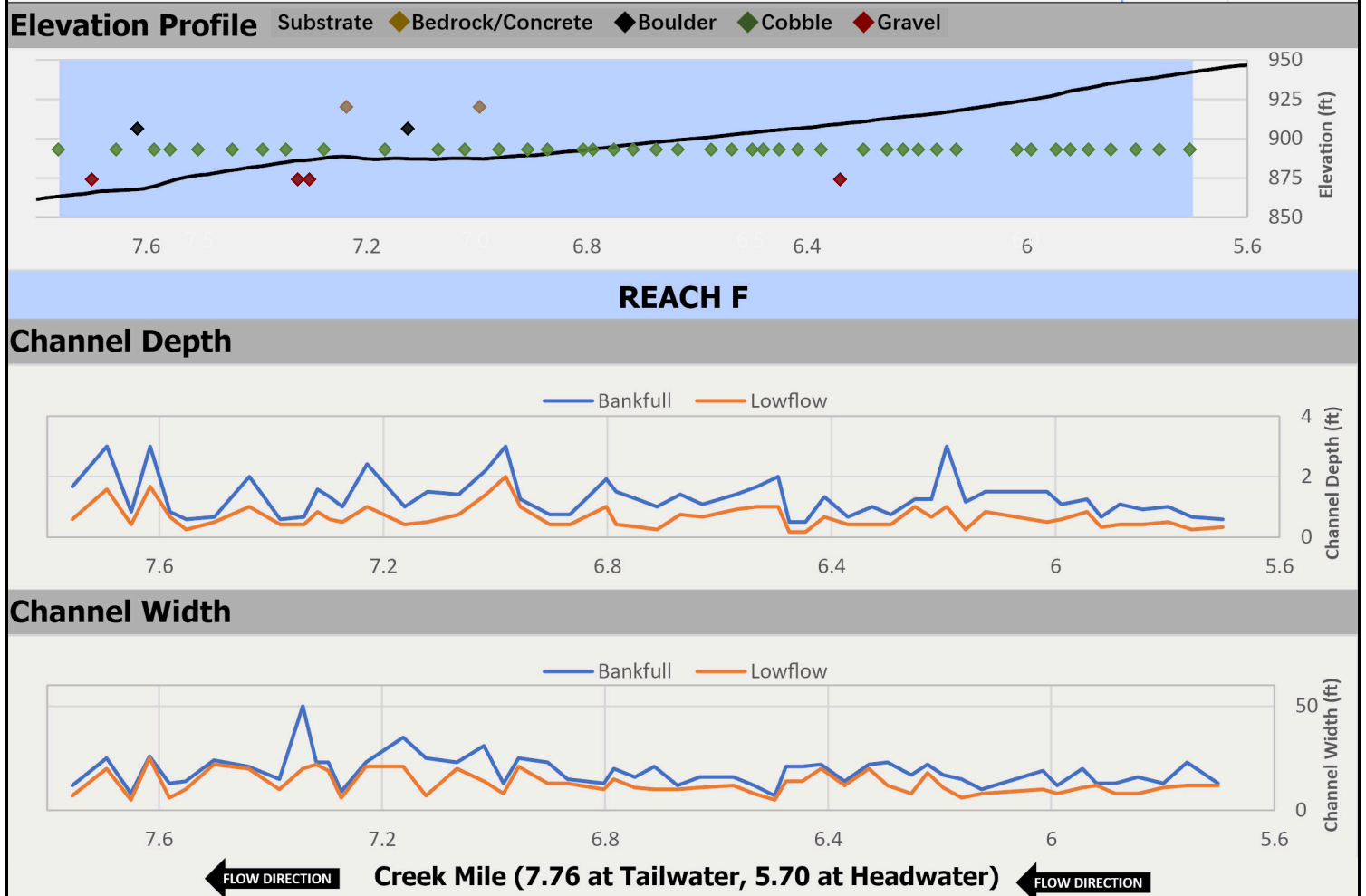
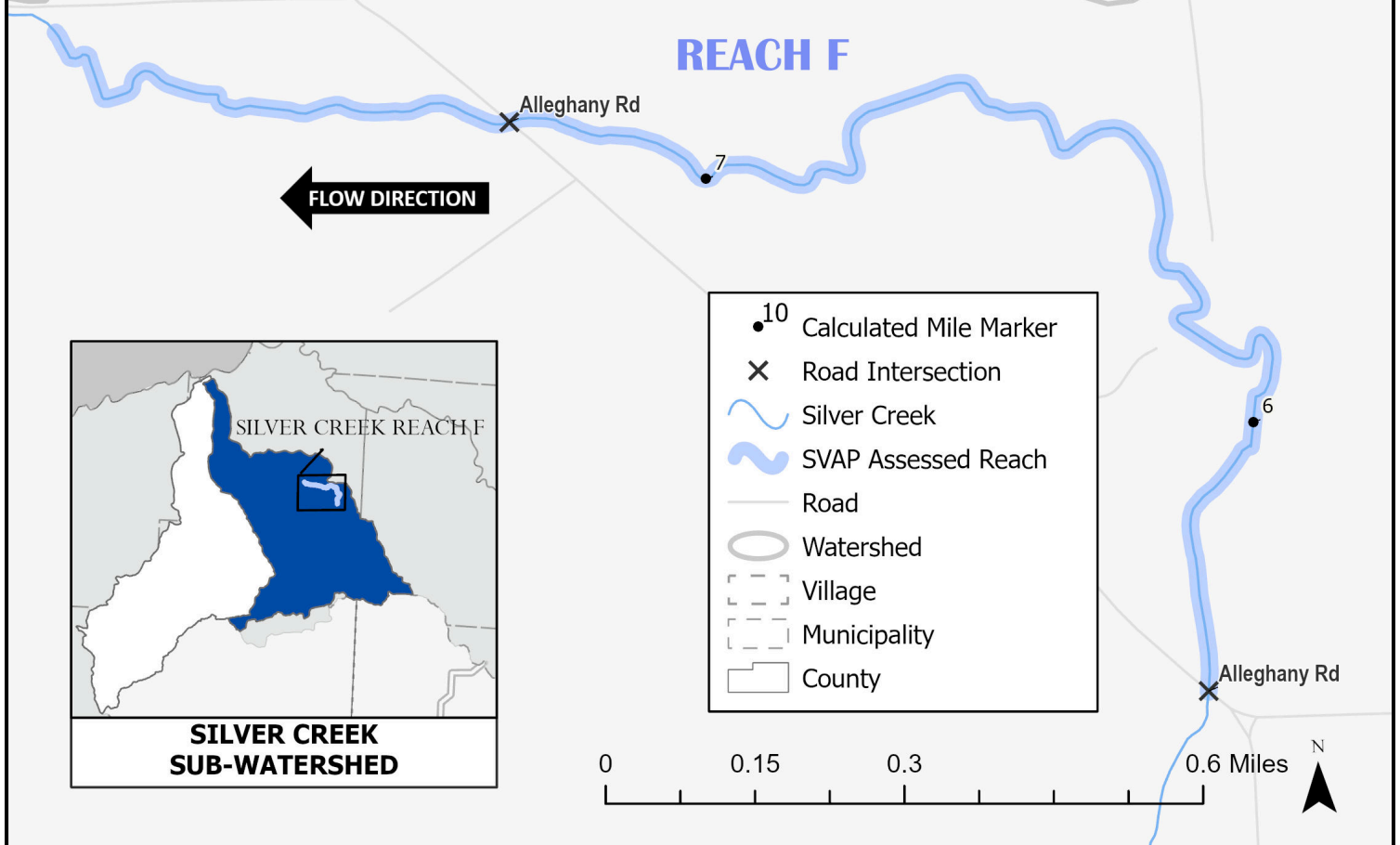


← FLOW DIRECTION Creek Mile (15.45 at Tailwater, 14.57 at Headwater) ← FLOW DIRECTION

# SILVER CREEK

STREAM VISUAL ASSESSMENT PROTOCOL (SVAP) RESULTS  
FOR REACH F

AVERAGE OVERALL SVAP RATING: **7.7**



# Classification Scheme for SVAP Parameters

Color Classification				
SVAP Score (0-10)	0 - 2.5	2.6 - 5	5.1 - 7.5	7.6 - 10

REACH F

## Channel Conditions

Score ■ Excellent ■ Good ■ Mediocre ■ Poor



## Stream Bank Hardening

■ No ■ Yes



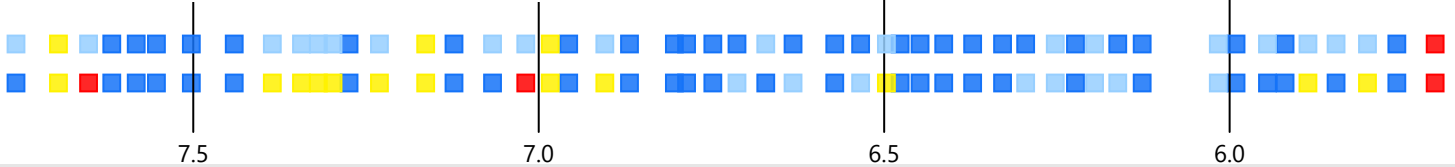
## Aggradation/Incision

■ Aggradation ▲ Incision



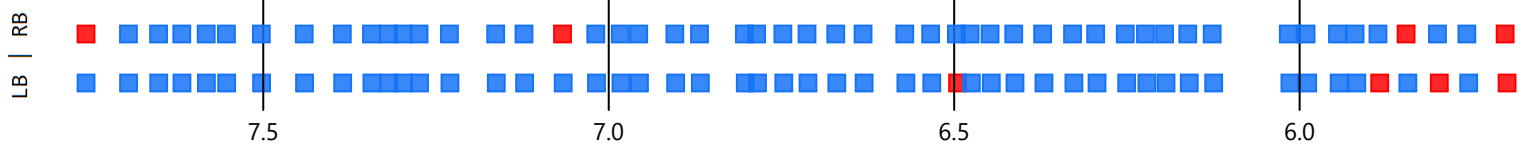
## Bank Stability

■ Excellent ■ Good ■ Mediocre ■ Poor



## Bank Condition

■ Hardened Structure ■ Natural



## Riparian Zone

Score ■ Excellent ■ Good ■ Mediocre ■ Poor



← FLOW DIRECTION

Creek Mile (7.76 at Tailwater, 5.70 at Headwater)

← FLOW DIRECTION

# REACH F

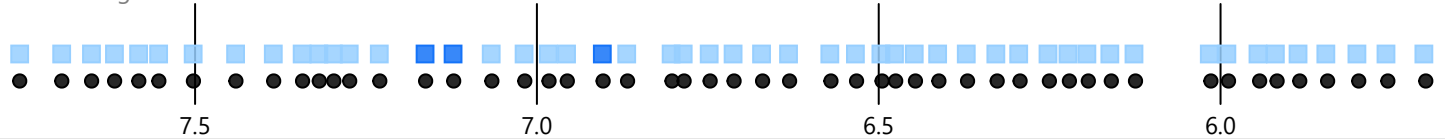
## Water Appearance

Score ■ Excellent ■ Good



## Nutrient Enrichment

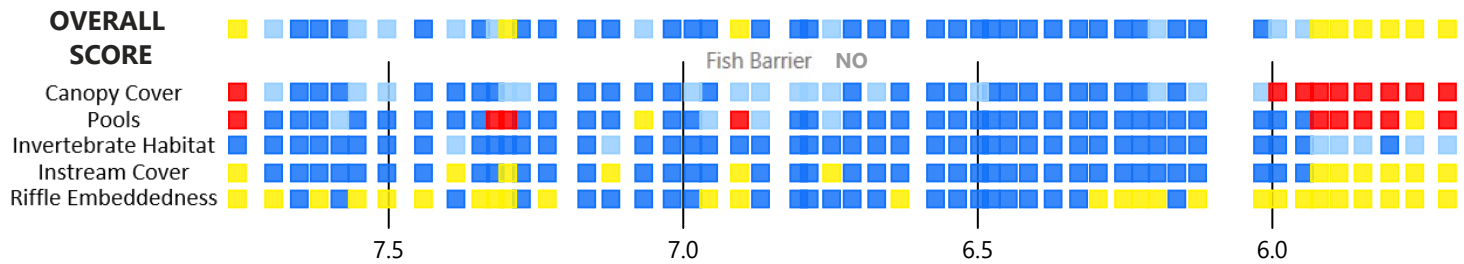
Low ■ Mild ■  
NE Notes ● Algal Growth



## Fish Habitat

Score ■ Excellent ■ Good ■ Mediocre ■ Poor

Note: Overall Score of Fish Habitat was calculated by averaging scores for the five variables shown below.



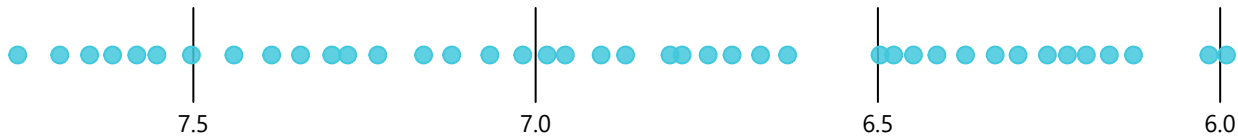
## Manure Presence

■ None ■ Evidence of Animals in Zone



## Invasive Species

● Japanese Knotweed



## Aquatic Vegetation

■ Both ▲ Emergent ● Submerged



## OVERALL SVAP RATING

SILVER CREEK

Score ■ Excellent ■ Good ■ Mediocre



FLOW DIRECTION

Creek Mile (7.76 at Tailwater, 5.70 at Headwater)

FLOW DIRECTION



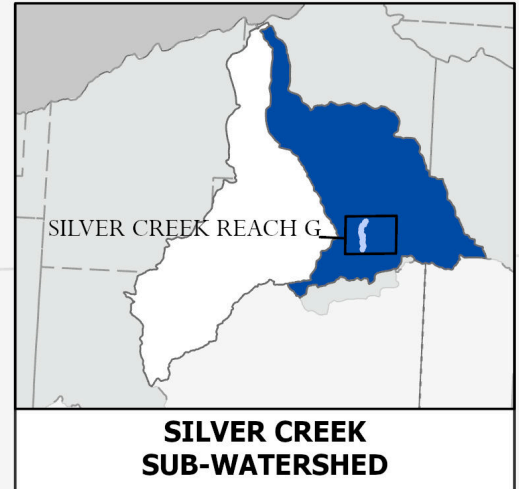
# SILVER CREEK

STREAM VISUAL ASSESSMENT PROTOCOL (SVAP) RESULTS  
FOR REACH G

AVERAGE OVERALL SVAP RATING: **8.5**

## REACH G

- 10 Calculated Mile Marker
- ✕ Road Intersection
- ~ Silver Creek
- ~ SVAP Assessed Reach
- Road
- Watershed
- - - Village
- - - Municipality
- County

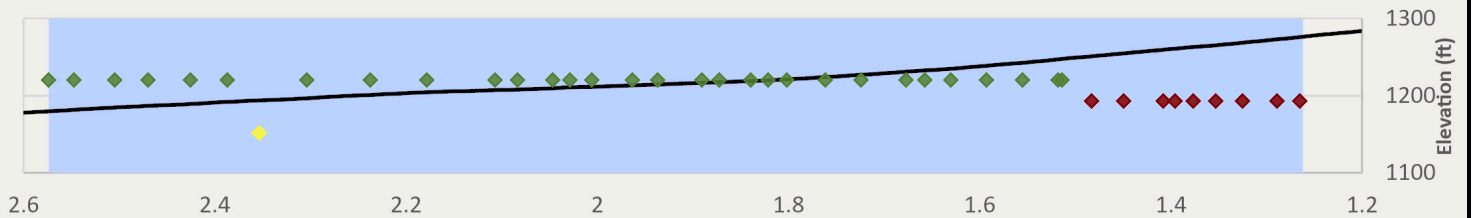


0 0.15 0.3 0.6 Miles

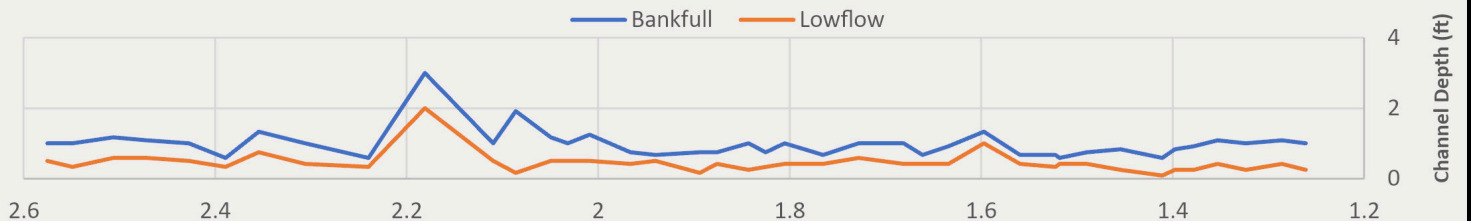


### Elevation Profile

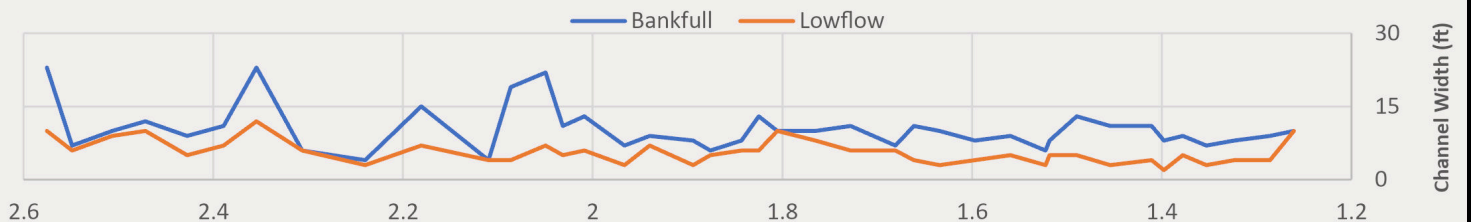
Substrate ● Cobble ● Gravel ● Silt/Clay



### Channel Depth



### Channel Width



← FLOW DIRECTION

Creek Mile (2.57 at Tailwater, 1.26 at Headwater)

← FLOW DIRECTION

# Classification Scheme for SVAP Parameters

Color Classification				
SVAP Score (0-10)	0 - 2.5	2.6 - 5	5.1 - 7.5	7.6 - 10

## REACH G

### Channel Conditions

Score ■ Excellent ■ Good ■ Mediocre



### Stream Bank Hardening

■ No ■ Yes



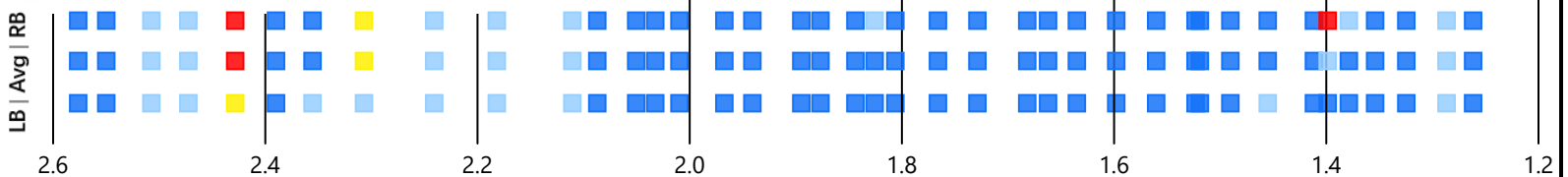
### Aggradation/Incision

■ Aggradation ▲ Incision



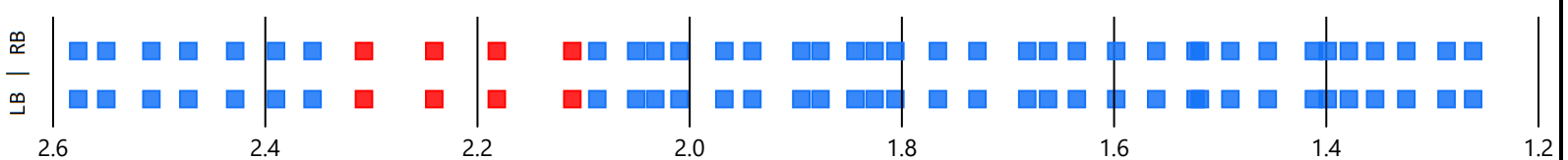
### Bank Stability

■ Excellent ■ Good ■ Mediocre ■ Poor



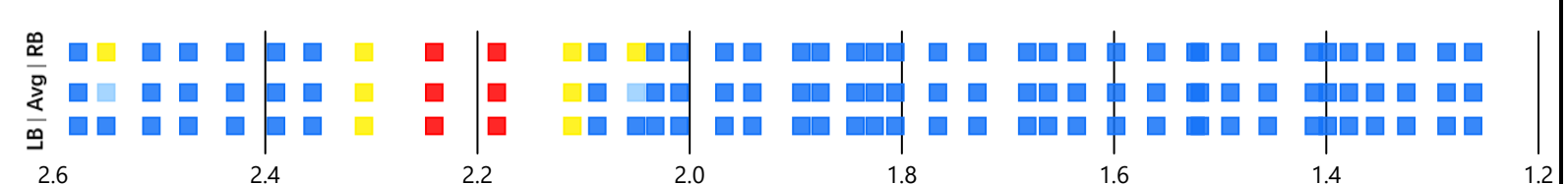
### Bank Condition

■ Hardened Structure ■ Natural



### Riparian Zone

Score ■ Excellent ■ Good ■ Mediocre ■ Poor



Creek Mile (2.57 at Tailwater, 1.26 at Headwater)



# REACH G

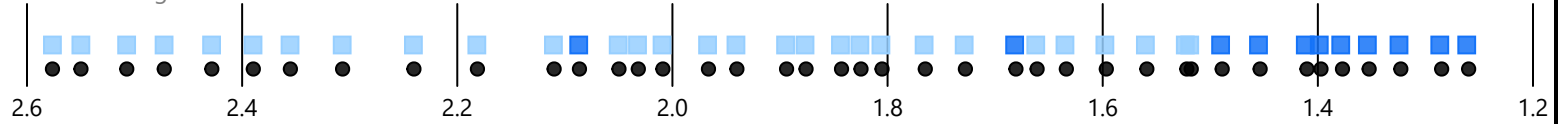
## Water Appearance

Score ■ Excellent ■ Good



## Nutrient Enrichment

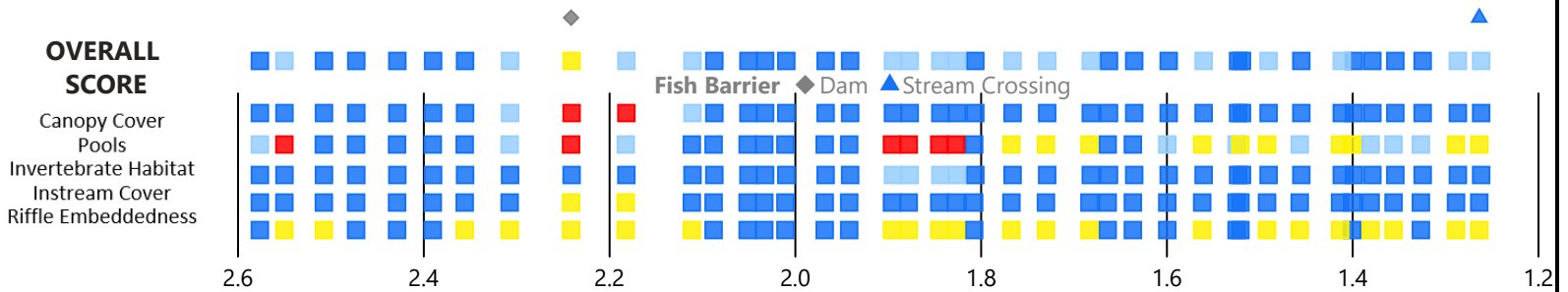
■ Low ■ Mild  
NE Notes ● Algal Growth



## Fish Habitat

Score ■ Excellent ■ Good ■ Mediocre ■ Poor

Note: Overall Score of Fish Habitat was calculated by averaging scores for the five variables shown below.



## Manure Presence

■ None ■ Evidence of Animals in Zone



## Invasive Species

None Observed



## Aquatic Vegetation

■ Both ▲ Emergent ● Submerged



## OVERALL SVAP RATING

SILVER CREEK

Score ■ Excellent ■ Good ■ Mediocre



FLOW DIRECTION

Creek Mile (2.57 at Tailwater, 1.26 at Headwater)

FLOW DIRECTION