

# **Opiate Epidemic Task Force: Naloxone Workgroup**

Erie County Health Department

February 3, 2020



# Narcan Trainings this quarter (9.30.19 – 12.31.19)

- Continued naloxone trainings conducted by the department:
  - Community members - 782
  - EMS Staff, Medical Students - 505
  - Library Staff and patrons- 33
  - School personnel including health staff, teachers, administrators, building maintenance - 188
  - Volunteer firefighters - 78
  - Law enforcement - 35
  - Street outreach – Community Wellness staff –

# Tertiary Prevention – Naloxone Trainings

**Total # trained for Narcan administration since 2013**

**2013 – 44**

**2014 – 904**

**First Responders - 904**

**Community – 0**

**2015 – 3614**

**First Responders – 1,739**

**Community – 1,875**

**2016 – 6,897**

**First Responders – 1,466**

**Community - 431**

# **Tertiary Prevention – Naloxone Trainings**

- **2017 – 6,477**
- **First Responders – 1,346 Community – 5,131**
  
- **2018 – 5,842**
- **First Responders – 1,350 Community – 4,492**
  
- **2019 – 2,786**
- **First Responders – 2,515 Community – 3,842**

# What's happening with naloxone/Narcan usage in WNY

- The following slides were created from the “opiate overdose reversal forms” that we collect from first responders specifically in the City of Buffalo
  - This has helped us understand the community affected
  - Each new batch of forms improves our data; so keep turning in those forms!

# Overdose Response Data, Buffalo, NY

ECDOH

January 2020

# Selection Criteria 1

- Data from 2014 through Dec 2019 (more data may still be submitted to us in Q1 2020).
- This is a sub-set of our full dataset (file copied, and irrelevant rows deleted).
- 2,170 total rows included here.

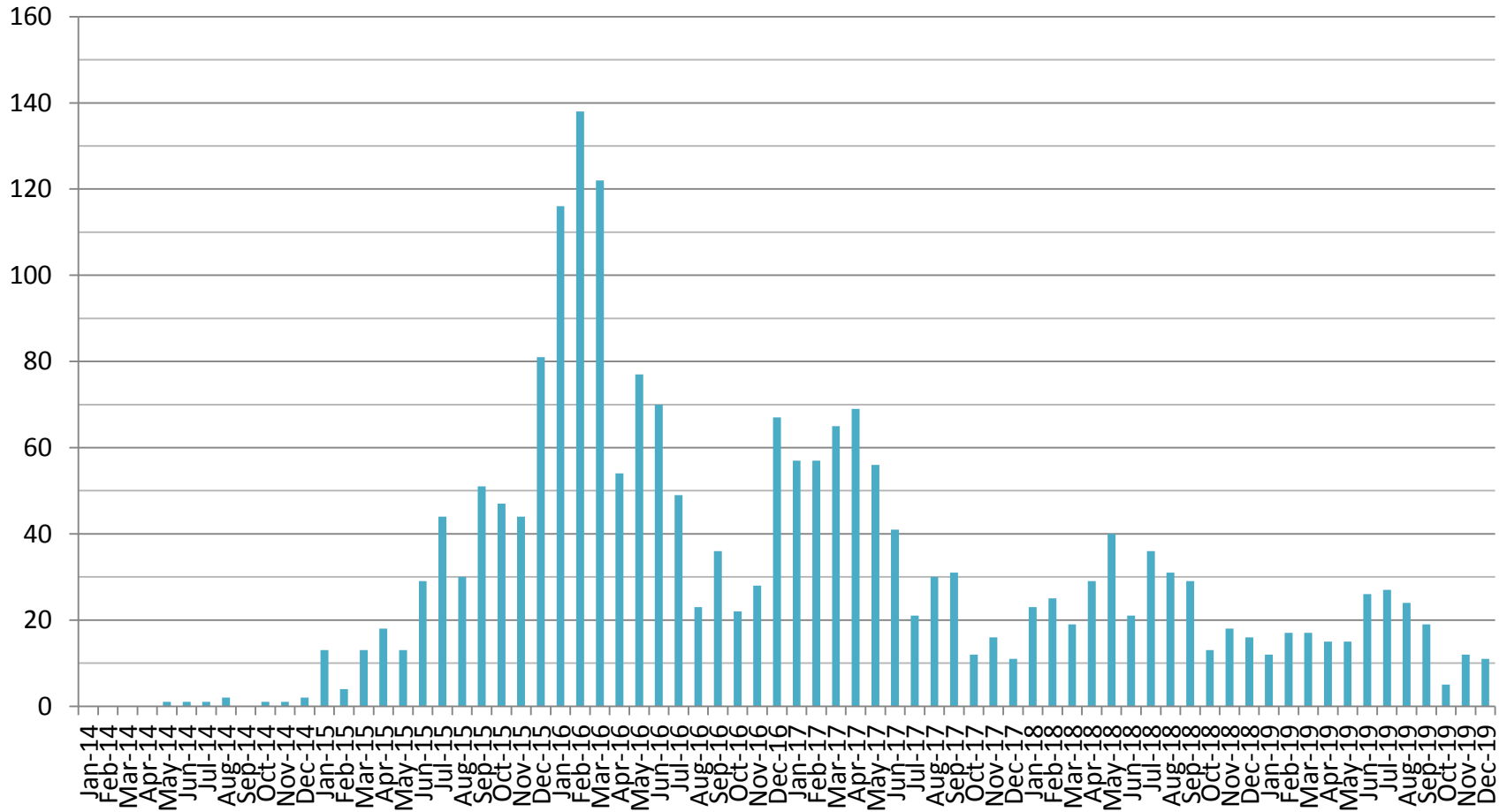
# Selection Criteria 2

- ZIP Codes selected from USPS' web site.
  - 44 ZIP Codes in USPS list; not all 44 codes represented in this dataset.
  - Some ZIP Codes are for a specific PO Box or specific organization.
  - Some of these ZIP Codes overlap into first-ring suburbs.
  - Dataset includes partial or missing ZIP Codes, when those entries appear to be from Erie County.

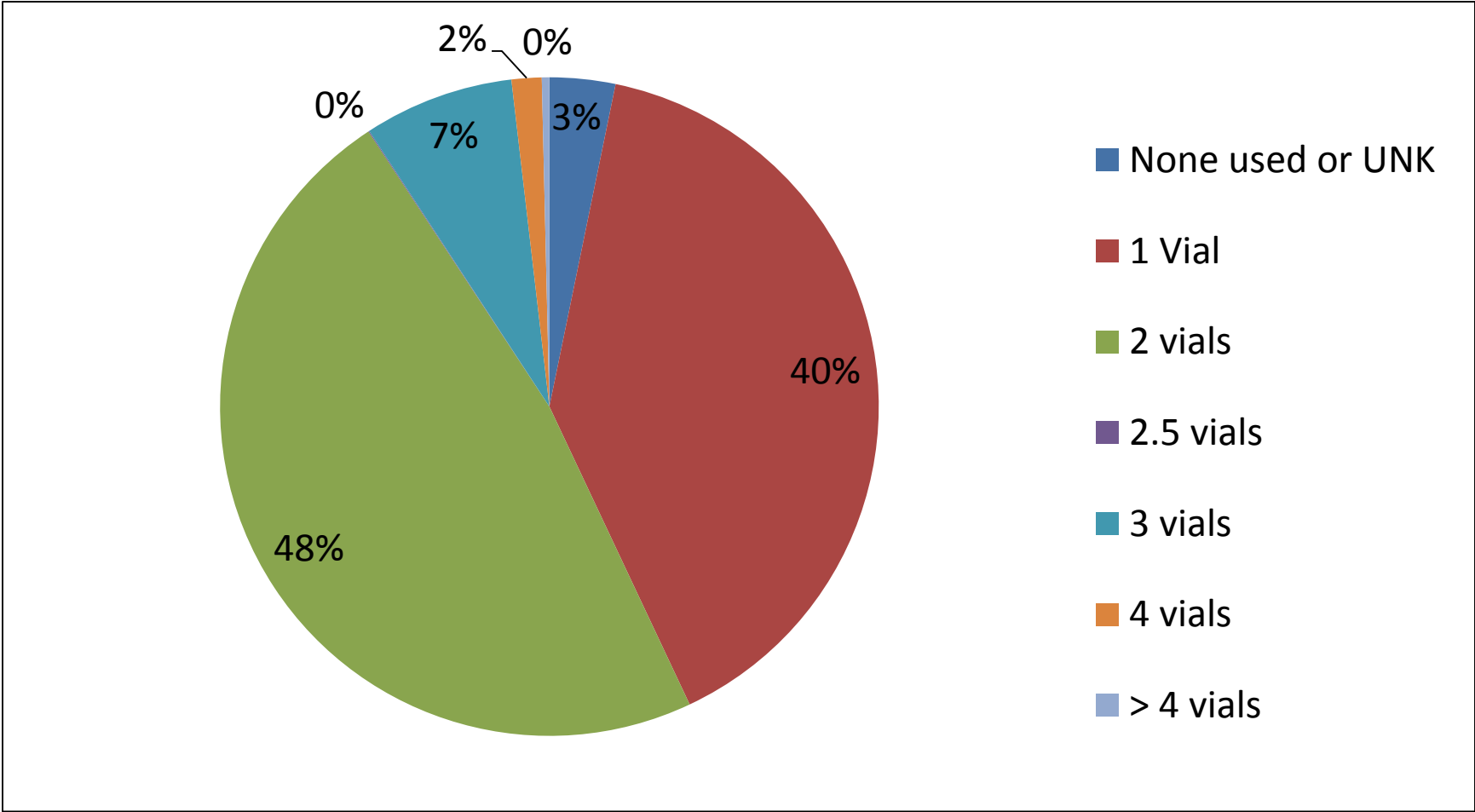


# Opiate Overdose Reversal Count, by Month

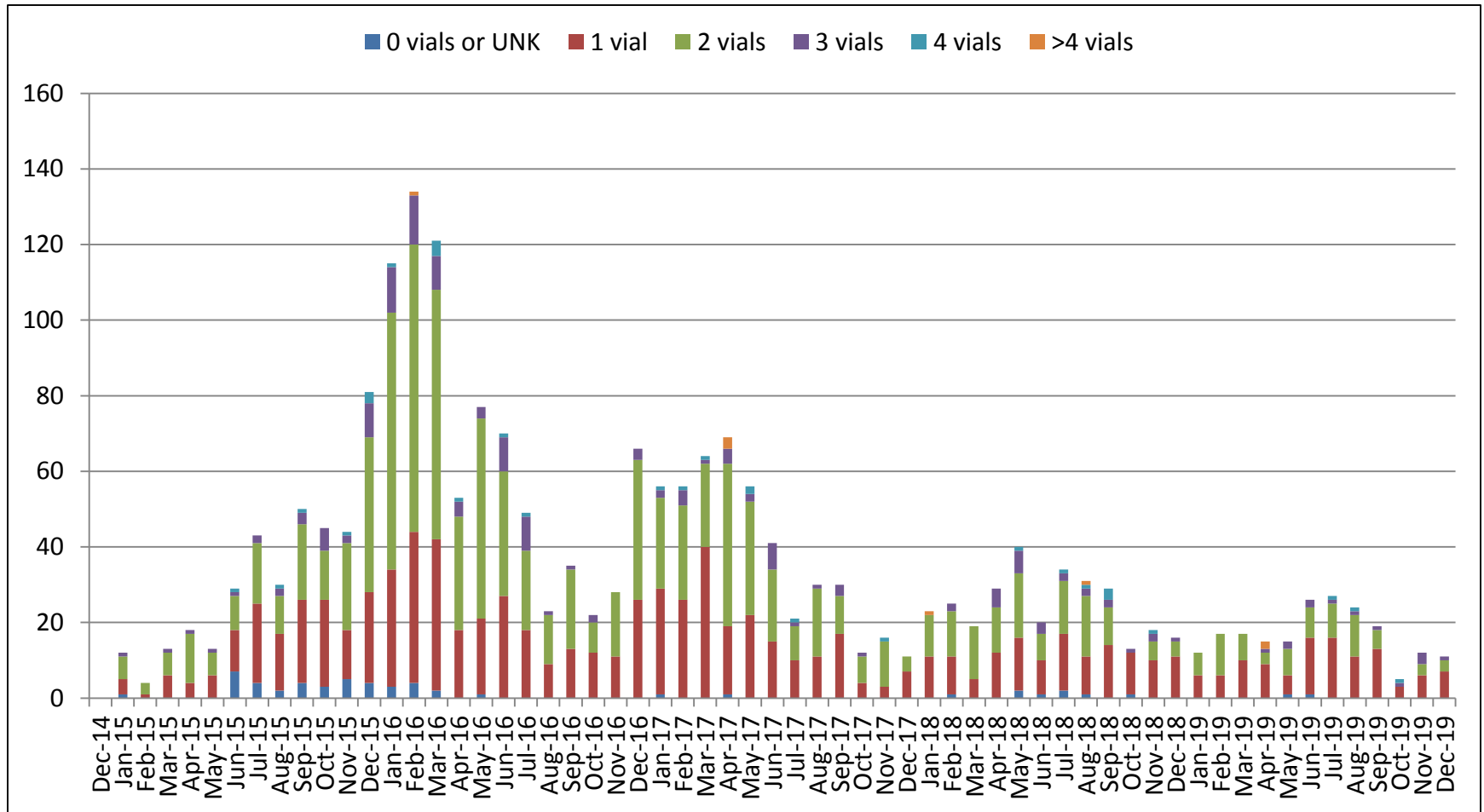
(N=2,164)



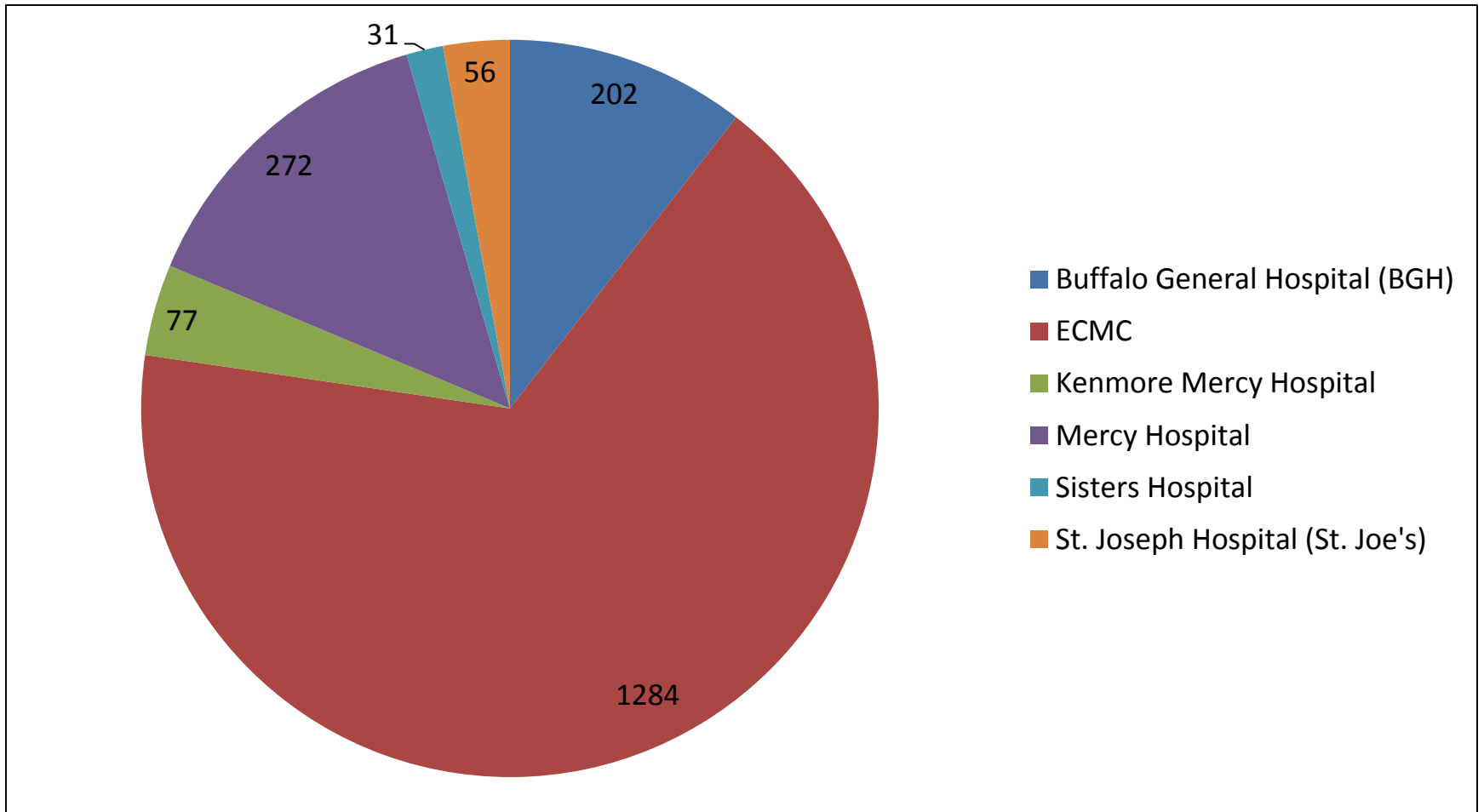
# Number of Doses Naloxone Used per OD, Total



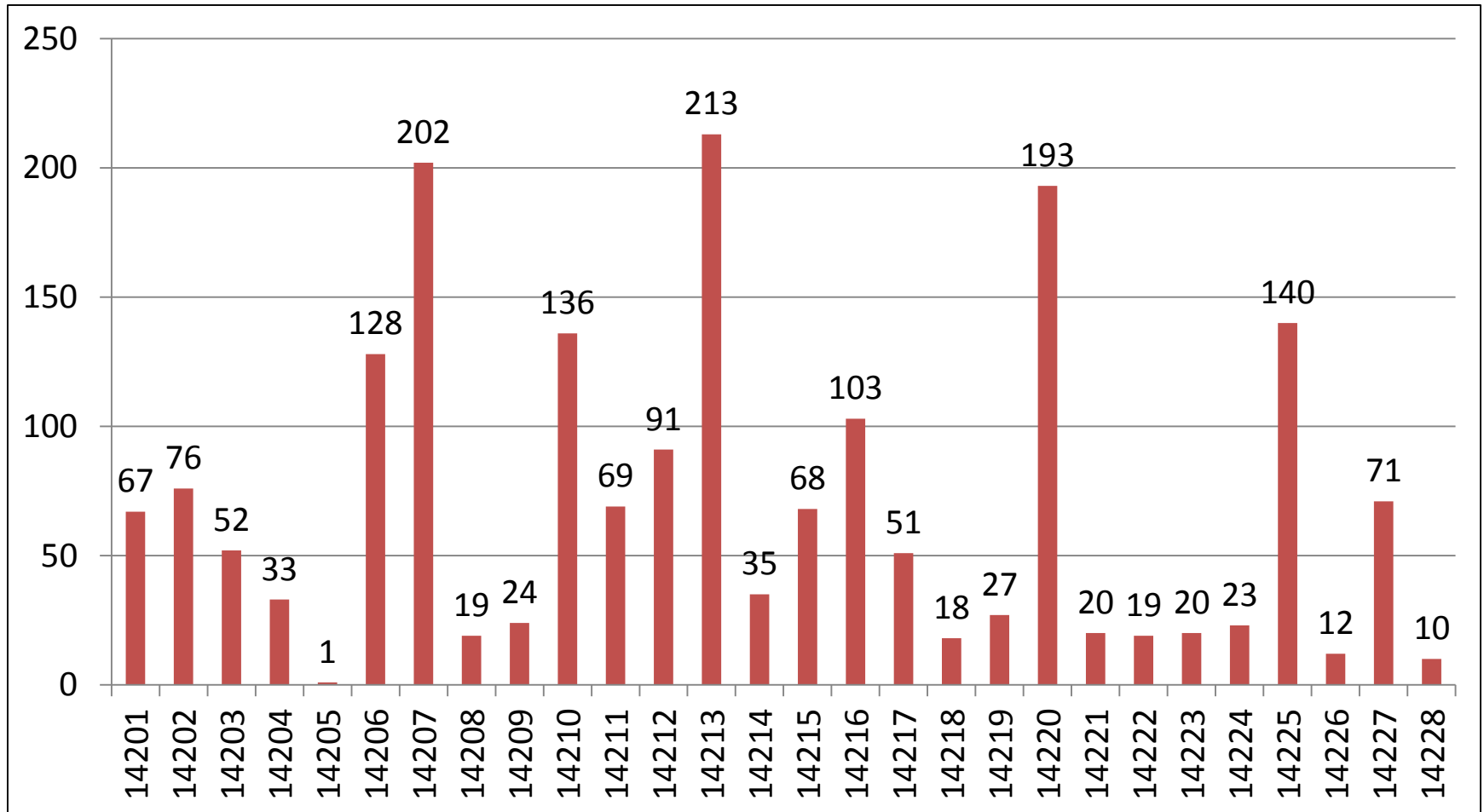
# Number of Doses Used per OD, by Month



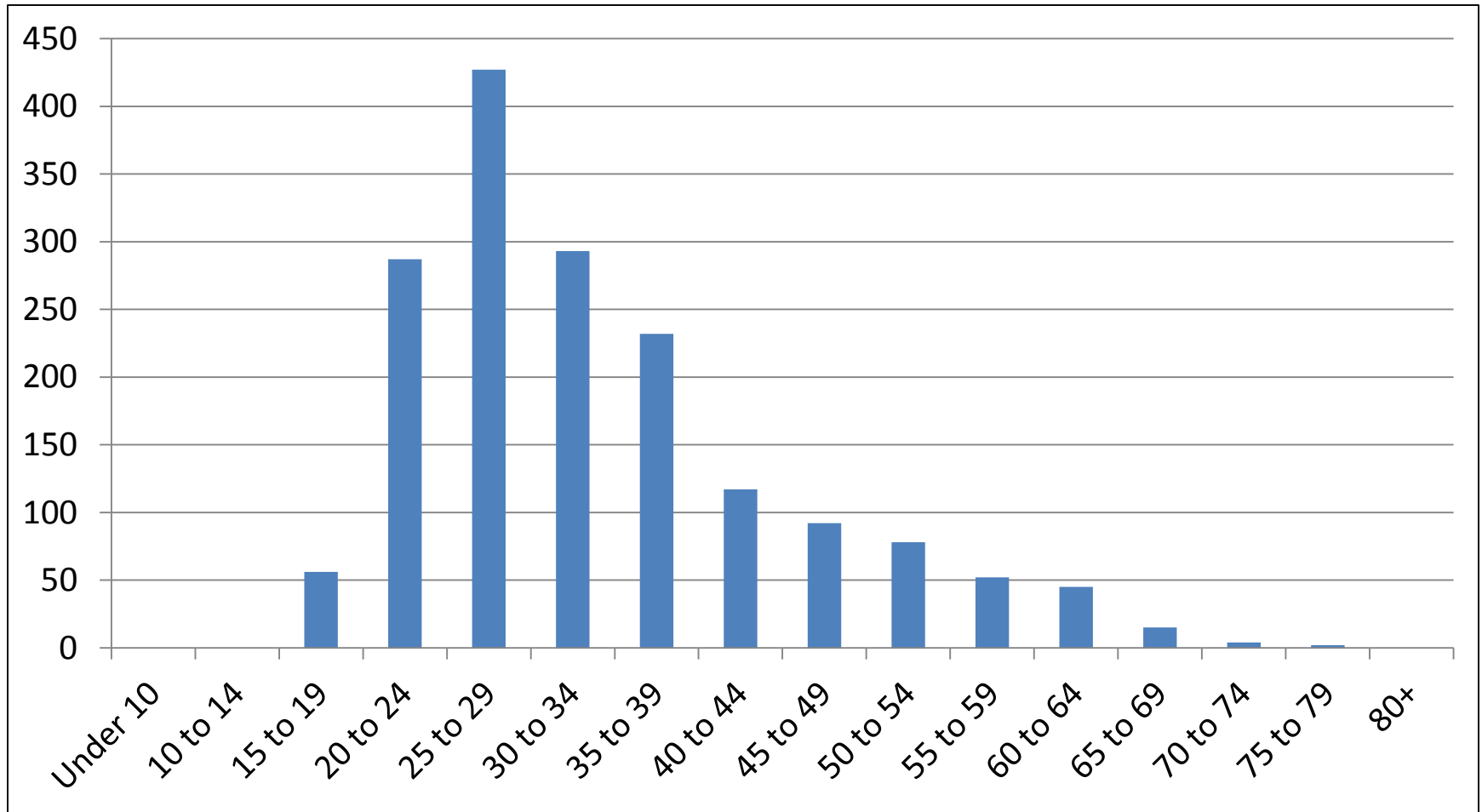
# Hospitals Sent To (Top 6 Answers), N=1,922



# ZIP Code of Overdose (excluding Unknown, N=1,921)



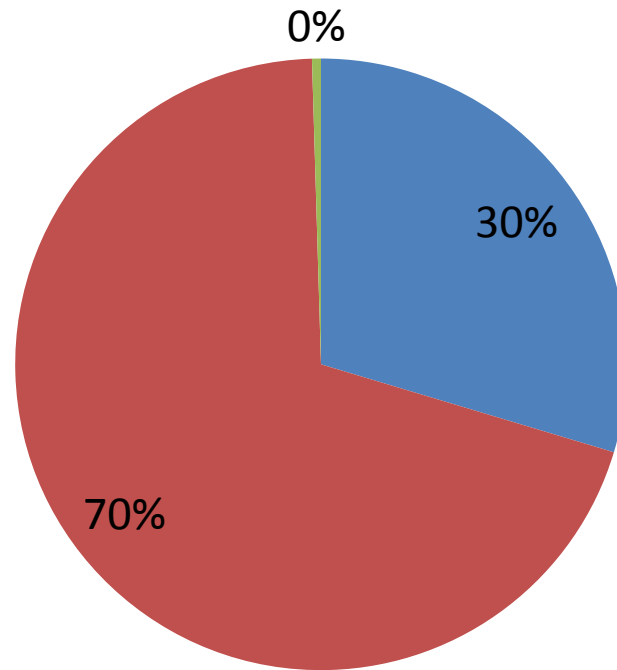
# Age Distribution of Overdoses (excluding Unknowns; N=1,700)



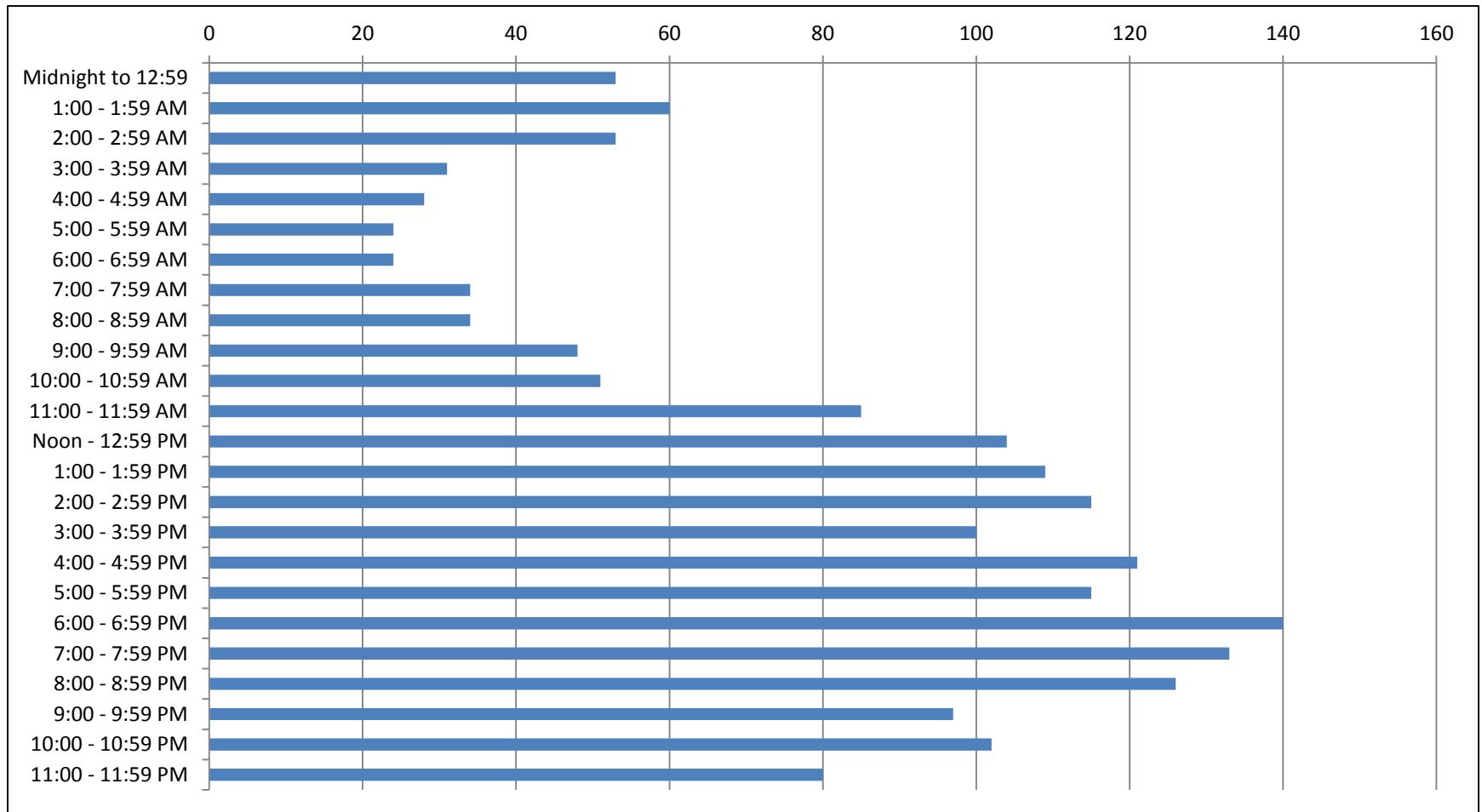
# Gender Distribution of Overdoses (exclude Unknown, N=2,122)

## Gender

■ Female ■ Male ■ Transgender

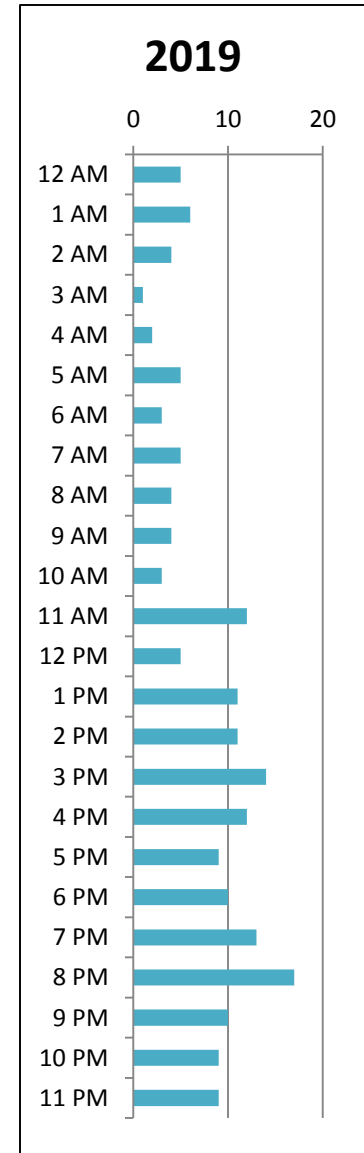
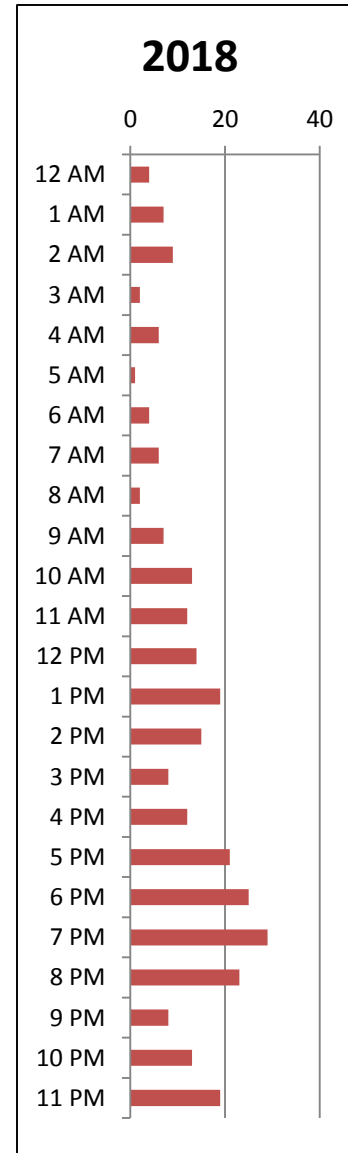
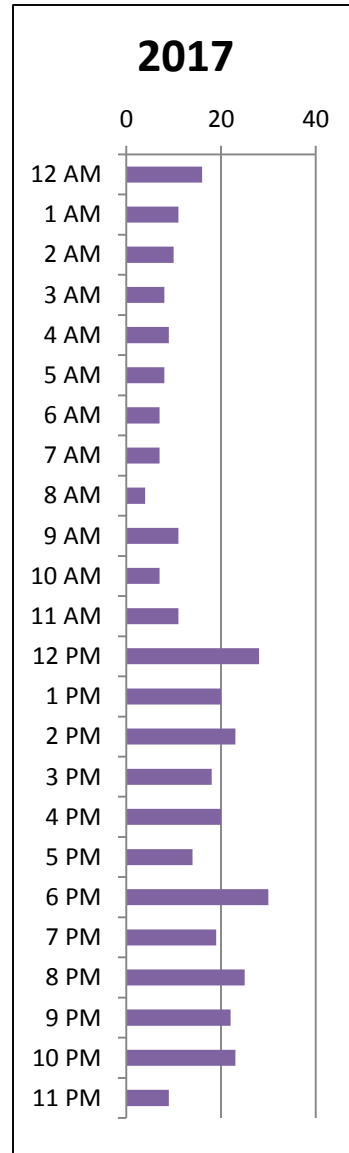
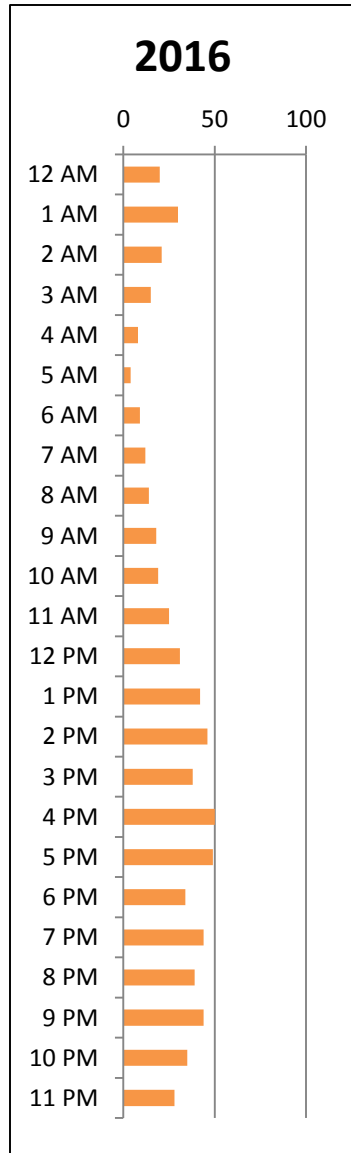
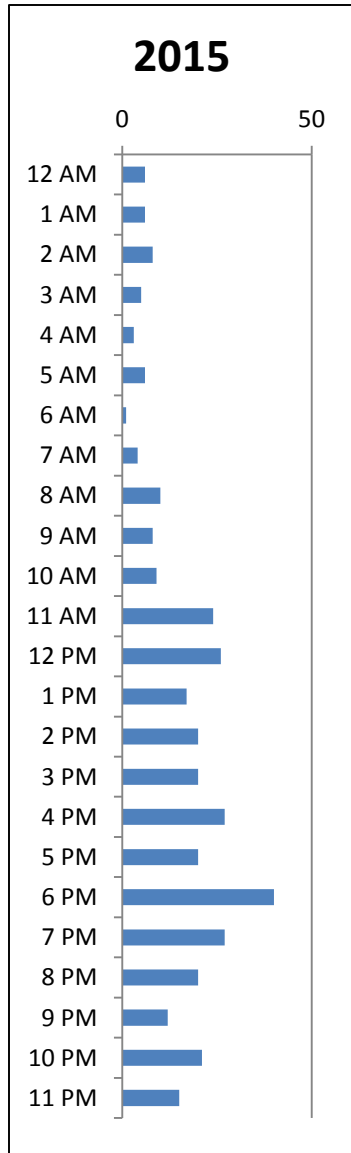


# Time of Day of Overdoses (N=2,170)

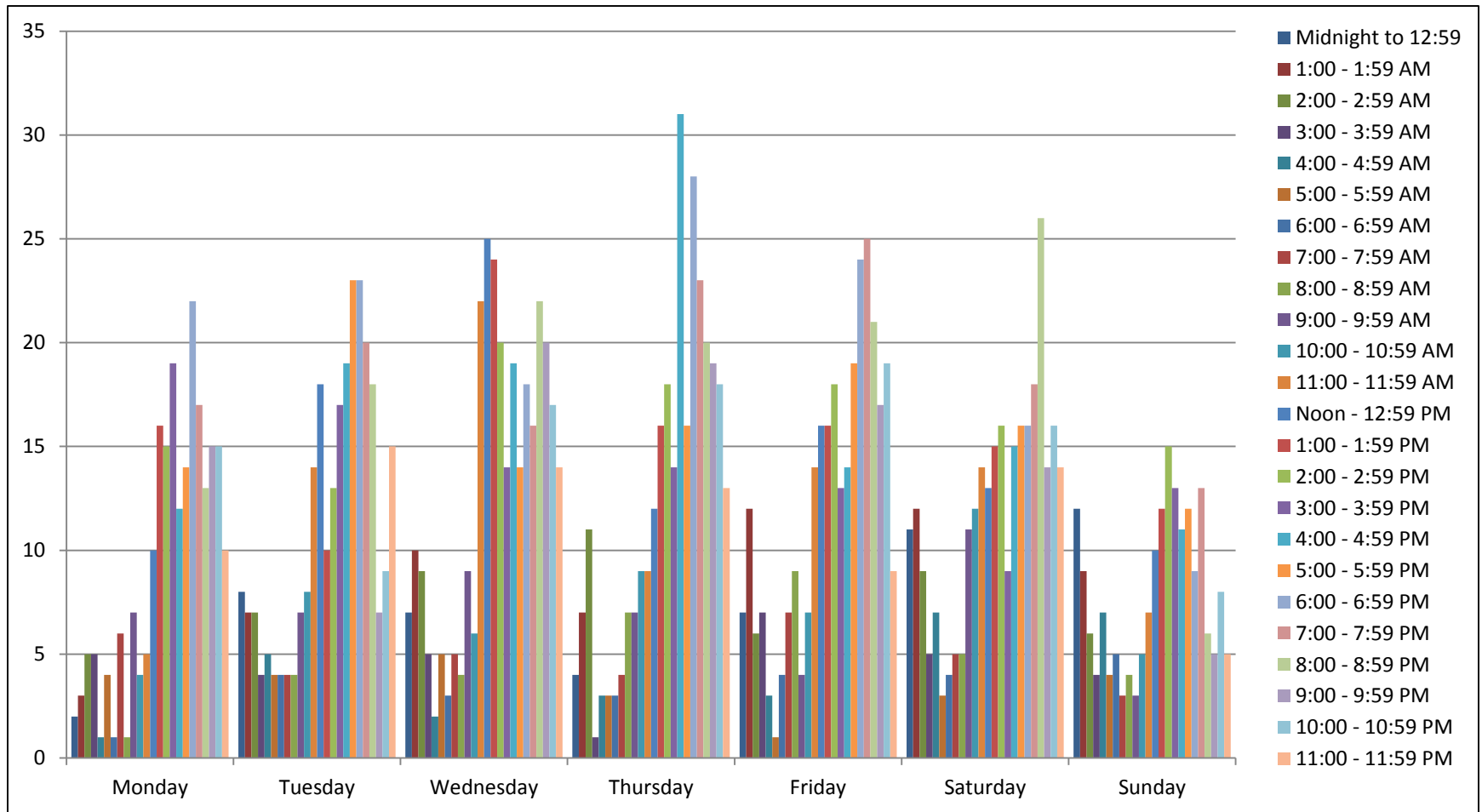




# Time of Day of Overdoses, by Year

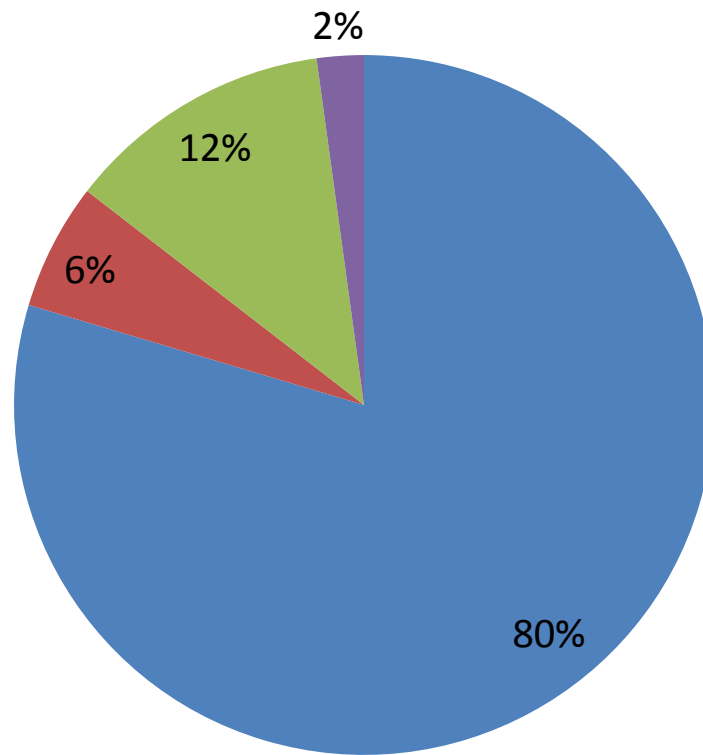


# Hour of Week of Overdoses (N=1,862)



# Survival (N=2,168)

■ Yes ■ No ■ Don't Know ■ Unknown



# Notes

- Overdose data is from forms completed by police officers and firefighters after administering Narcan.
  - The database expands each time we enter more forms.
  - It is possible that multiple reports have been completed for the same individuals at different time points (repeat overdoses).

# Additional Naloxone Workgroup Activities

## New Project – “Community Narcan Access Sites”

- Sparks of Hope
- Good Shepherd Church
- Assemblyman Sean Ryan – Grant St Office
- St Bernadette Church – Orchard Park
- Union Fire Hall – West Seneca
- Our Lady of Victory Family Care Center
- Reflections Recovery, Newfane
- Restoration Society
- The Genesis Center
- Brant Town Hall
- Unitarian Universalist Church of Buffalo

# Narcan emergency boxes



**WNY** Response  
After Overdose



Erie County  
**HEALTH**

# Narcan Boxes

ECDOH

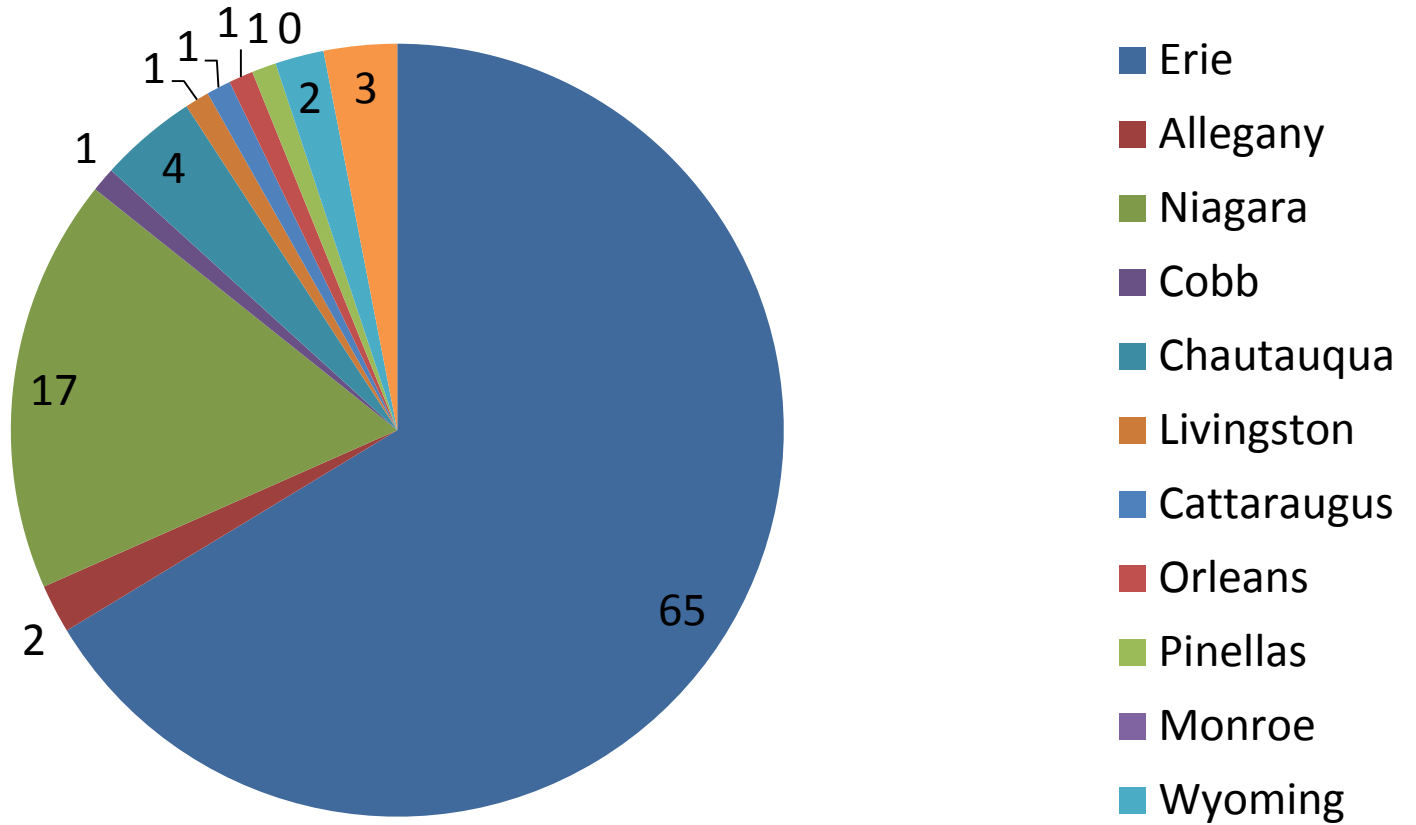
January 30, 2020

# Notes

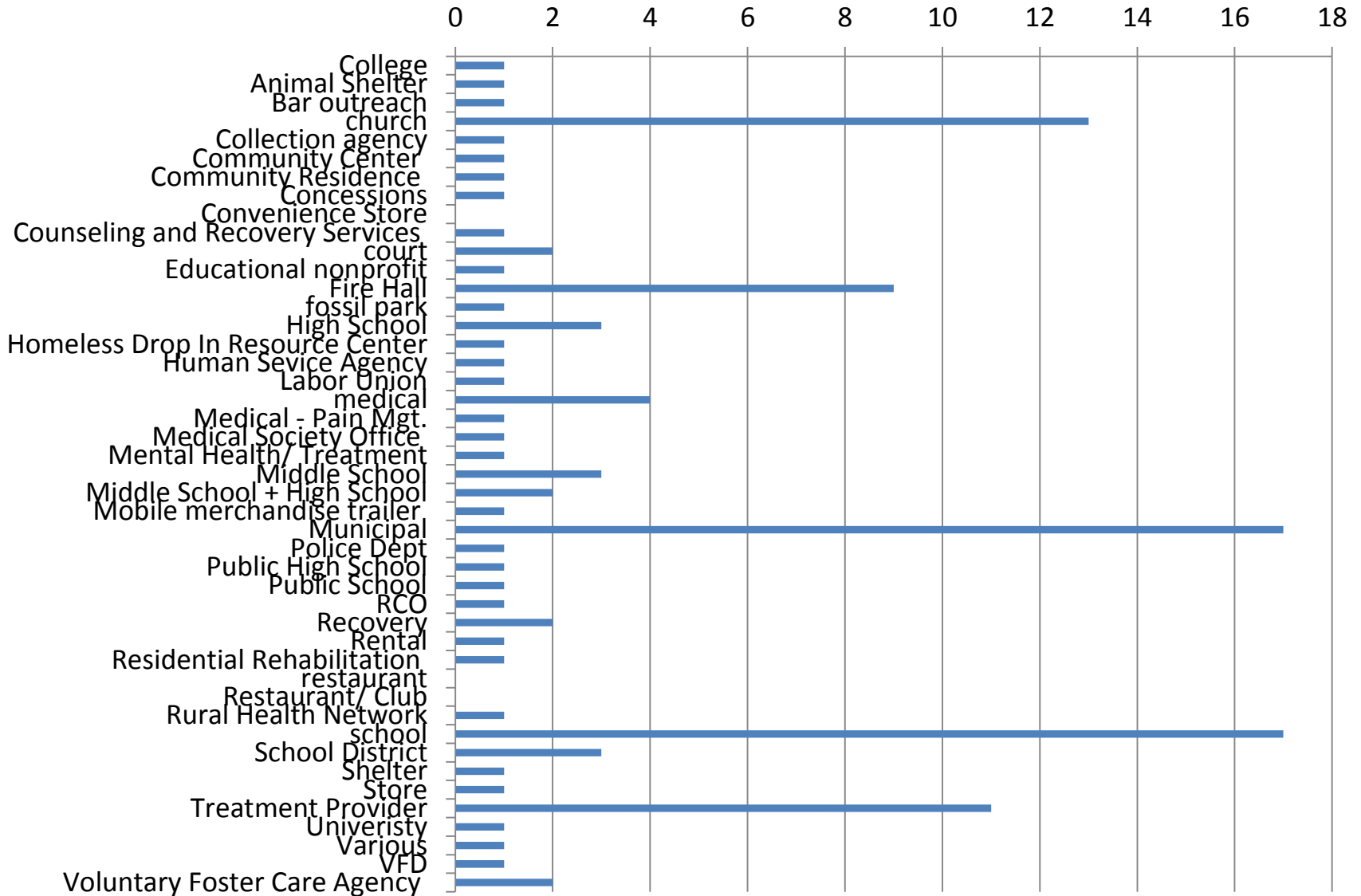
- Total boxes distributed so far: 202
  - Requested, but not yet picked up: approximately 120
  - If you have requested Narcan boxes, but not picked them up yet, please make arrangements to do so!
- Vast majority of boxes deployed in Western New York
  - One each in Florida, Georgia
  - Other parts of country have reached out to us, ordered boxes of their own through the company



# Counties Requesting Boxes

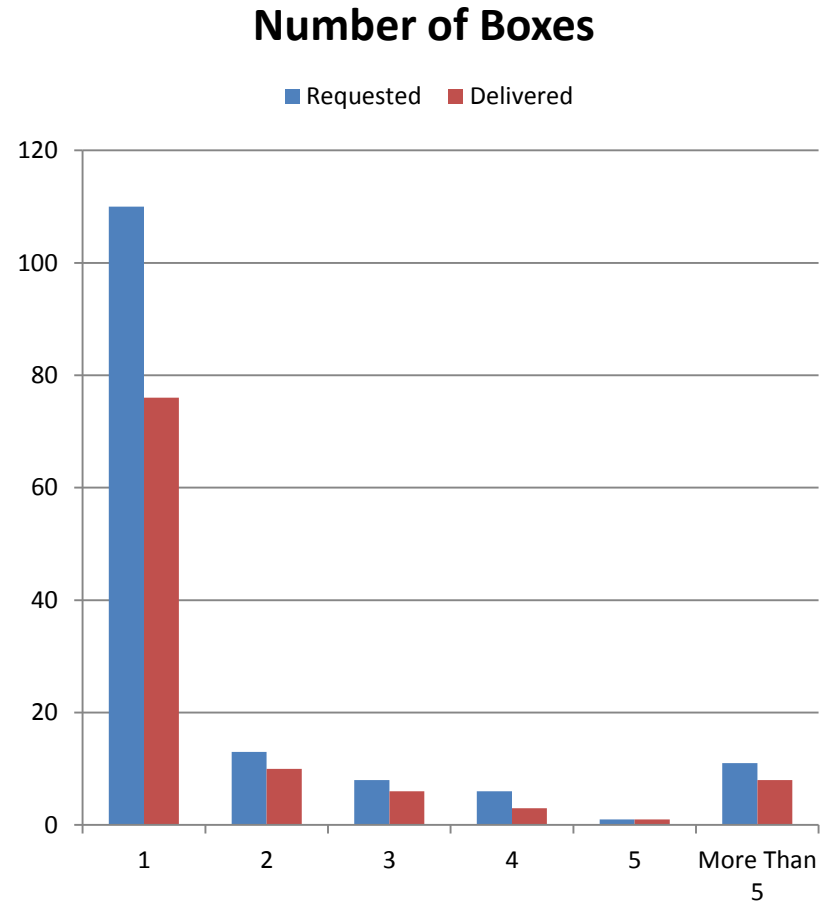


# Organizations

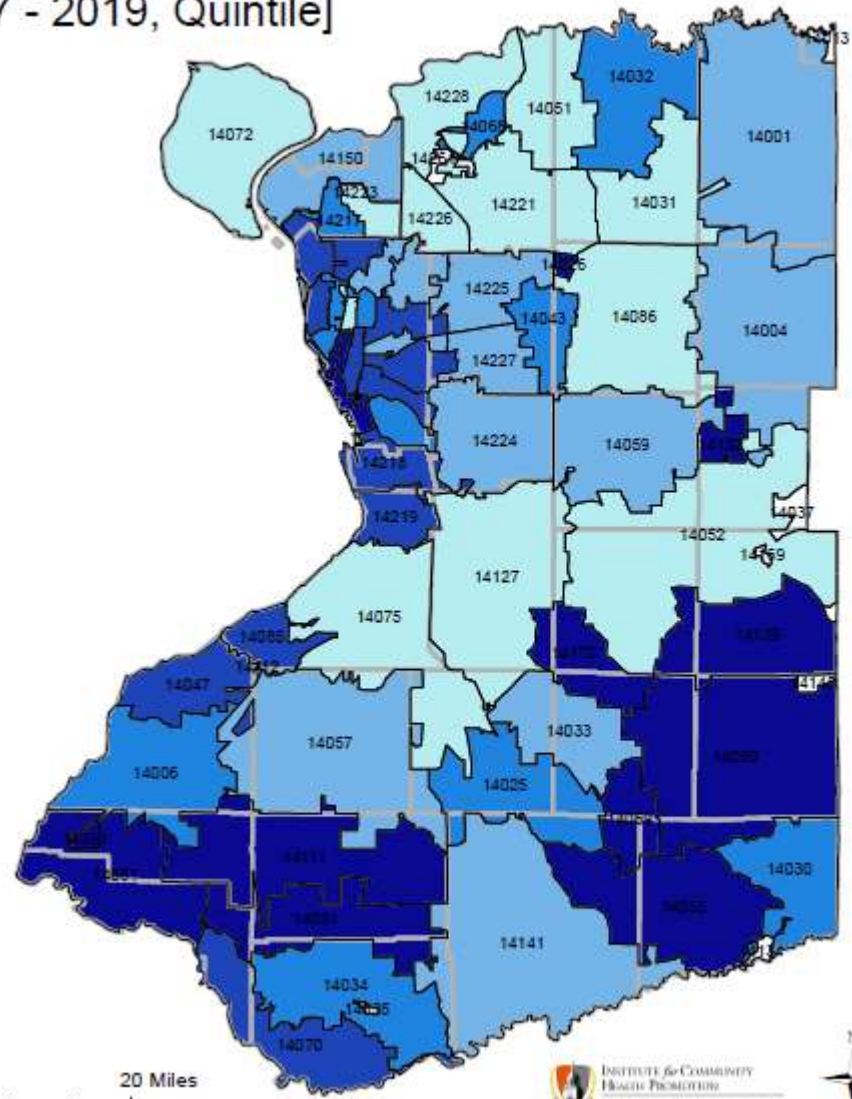
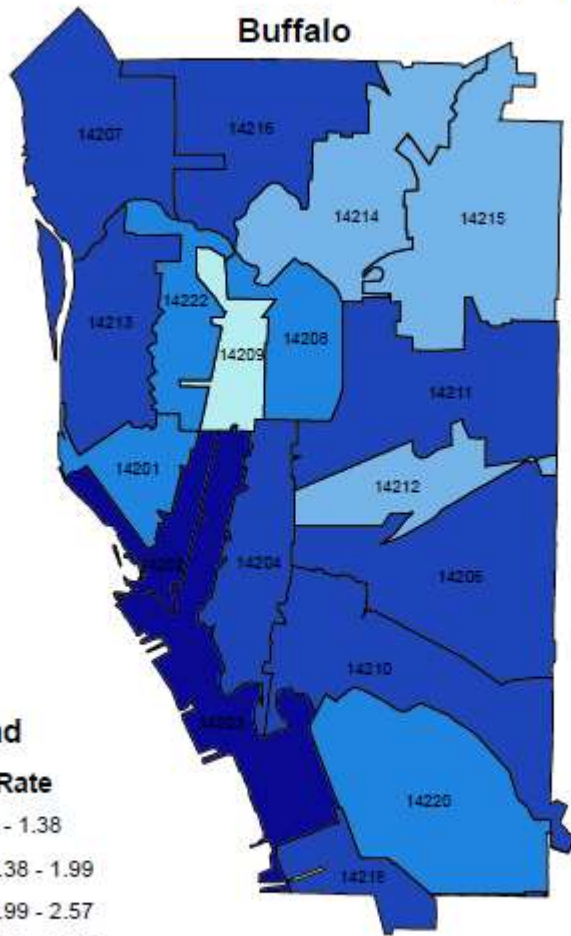


# Order Sizes

- Most orders have just been for one box
- Some organizations have requested multiple boxes, to distribute across buildings.
- Largest order fulfilled so far: 30 boxes



# Opioid-Related Death Rate (per 10,000 population) by ZIP Code [2017 - 2019, Quintile]



## Legend

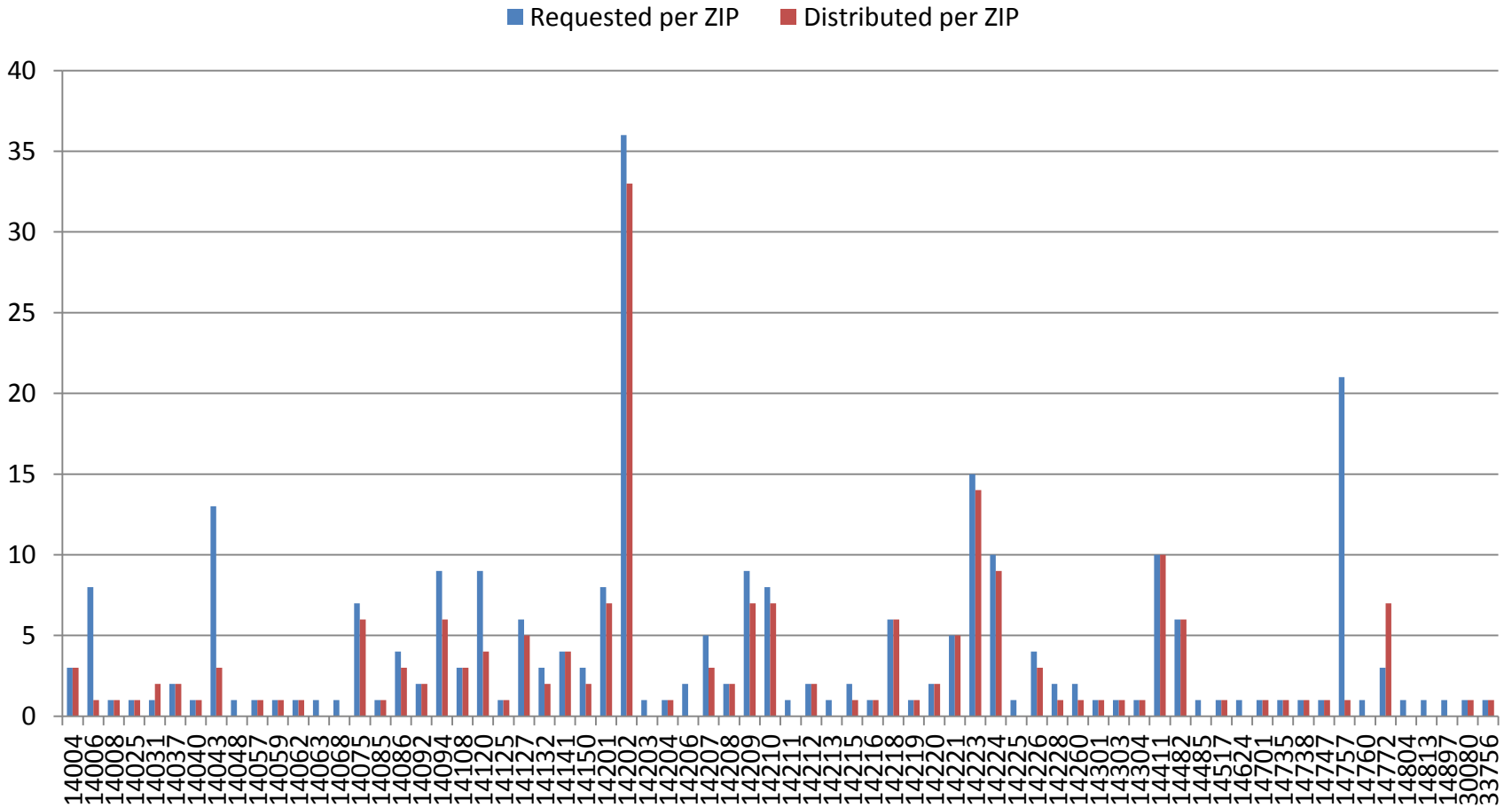
### Death Rate

- 0 - 1.38
- 1.38 - 1.99
- 1.99 - 2.57
- 2.57 - 4.87
- 4.87 - 54.29

Municipal Boundaries



# Boxes Distributed by ZIP Code



# Creating a collaborative response to the Opioid Overdose Epidemic in Erie County NY between First Responders, Public Health, and Peers in recovery

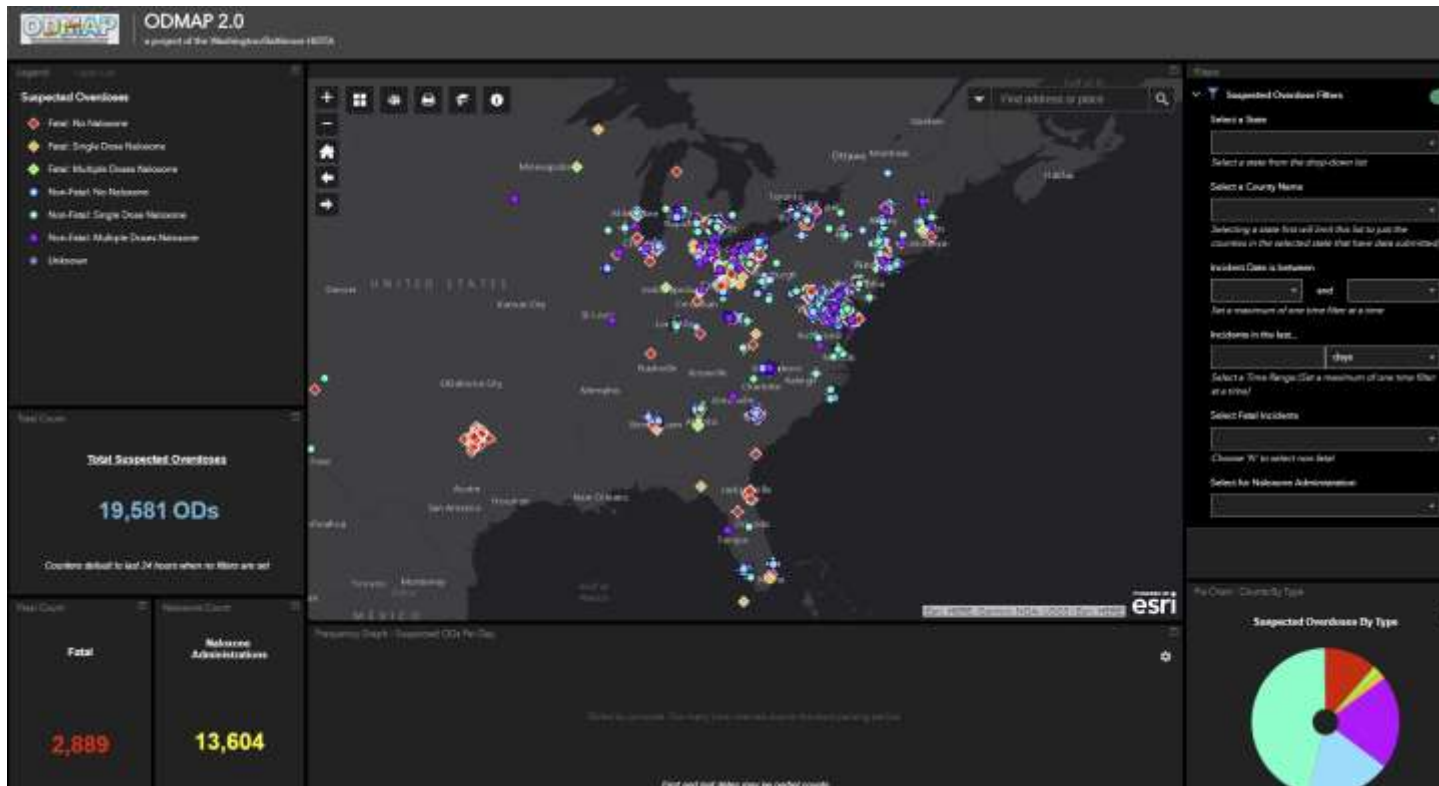
Where are we today  
Lessons learned  
Changes being implemented



# Erie County New York Peer and First Responder Response After Overdose Utilizing ODMAP

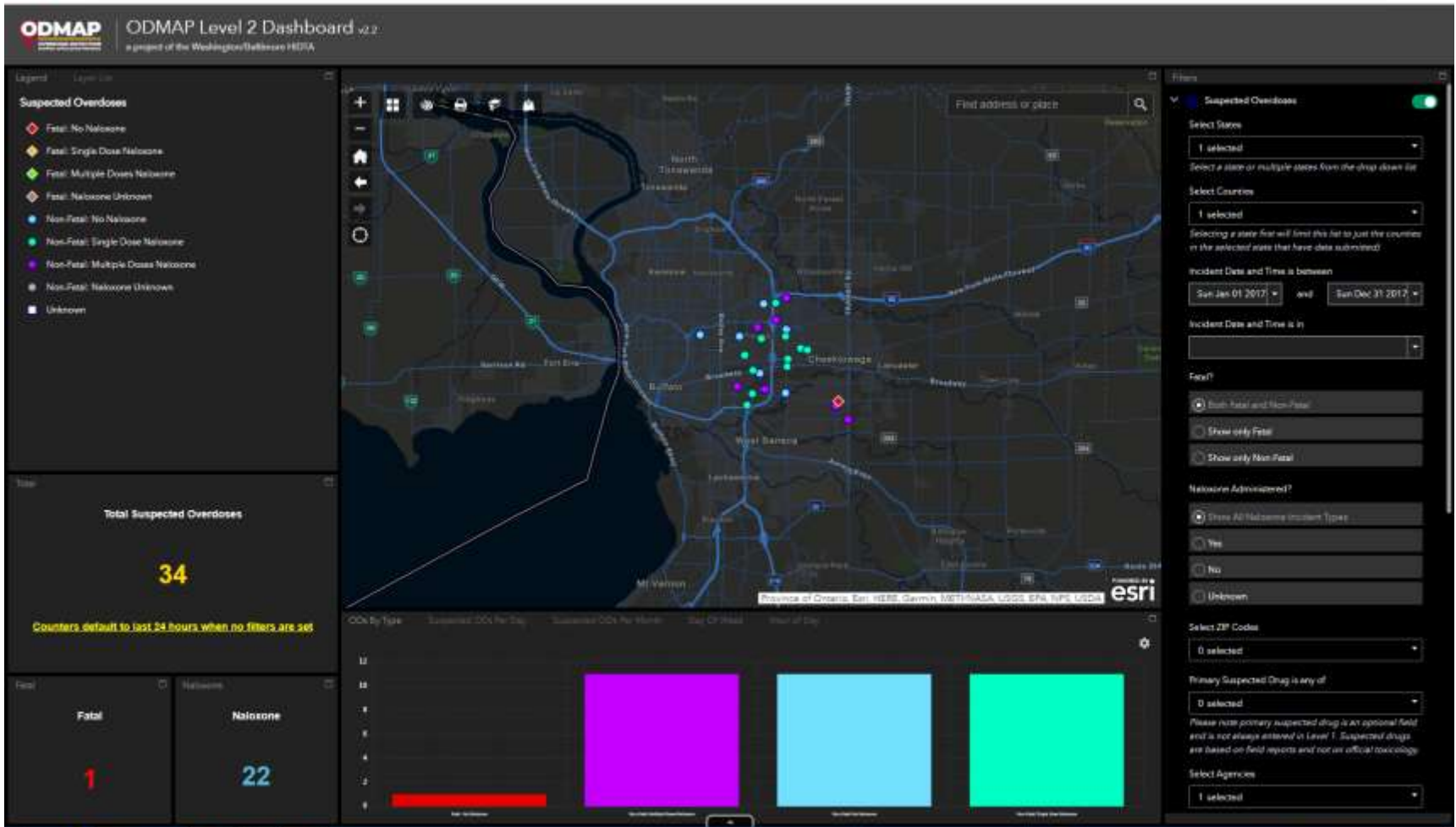


# ODMAP Platform



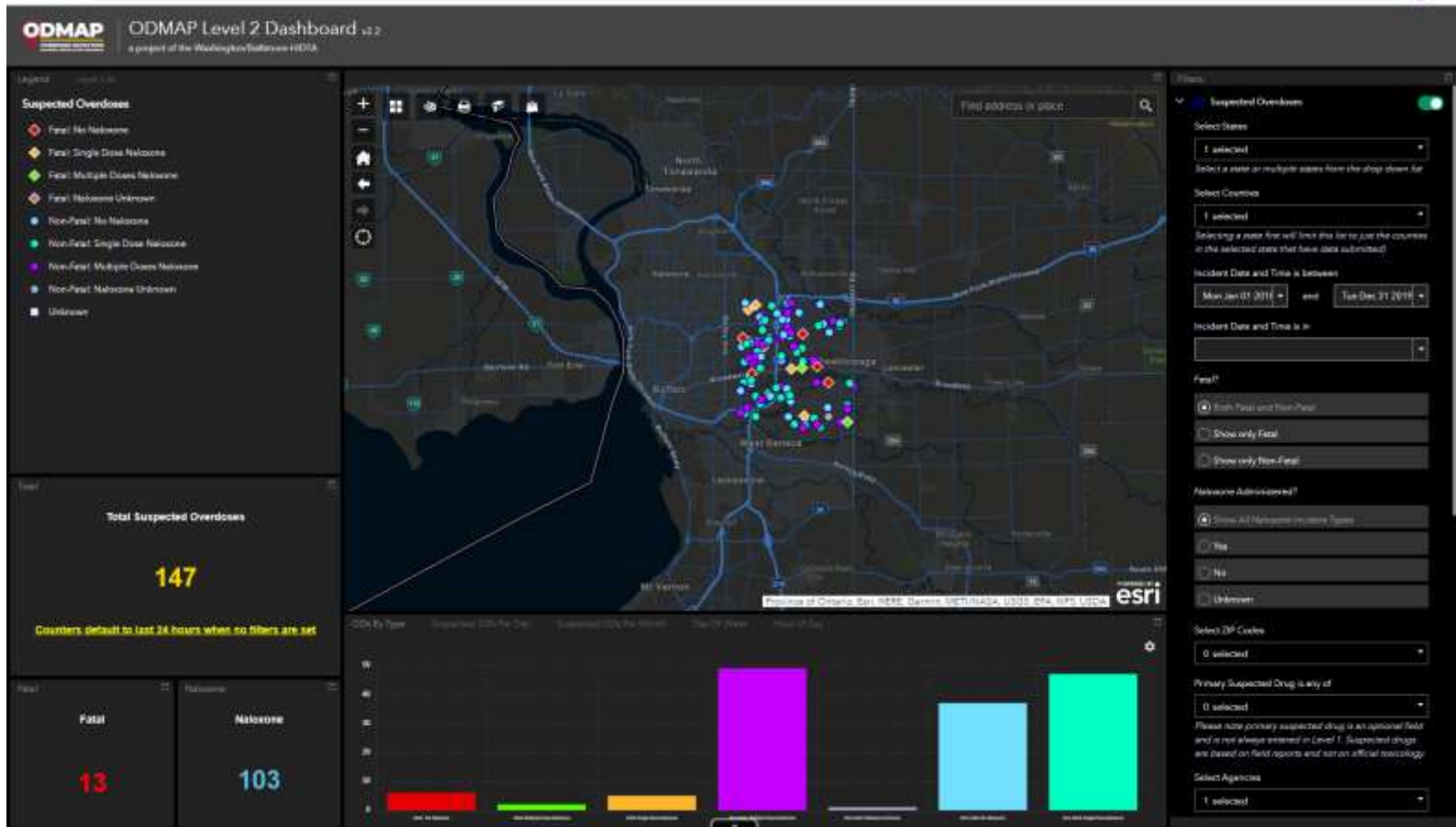


# ODMAP: 9/1/17 – 12/31/17 CHEEKTOWAGA, NEW YORK

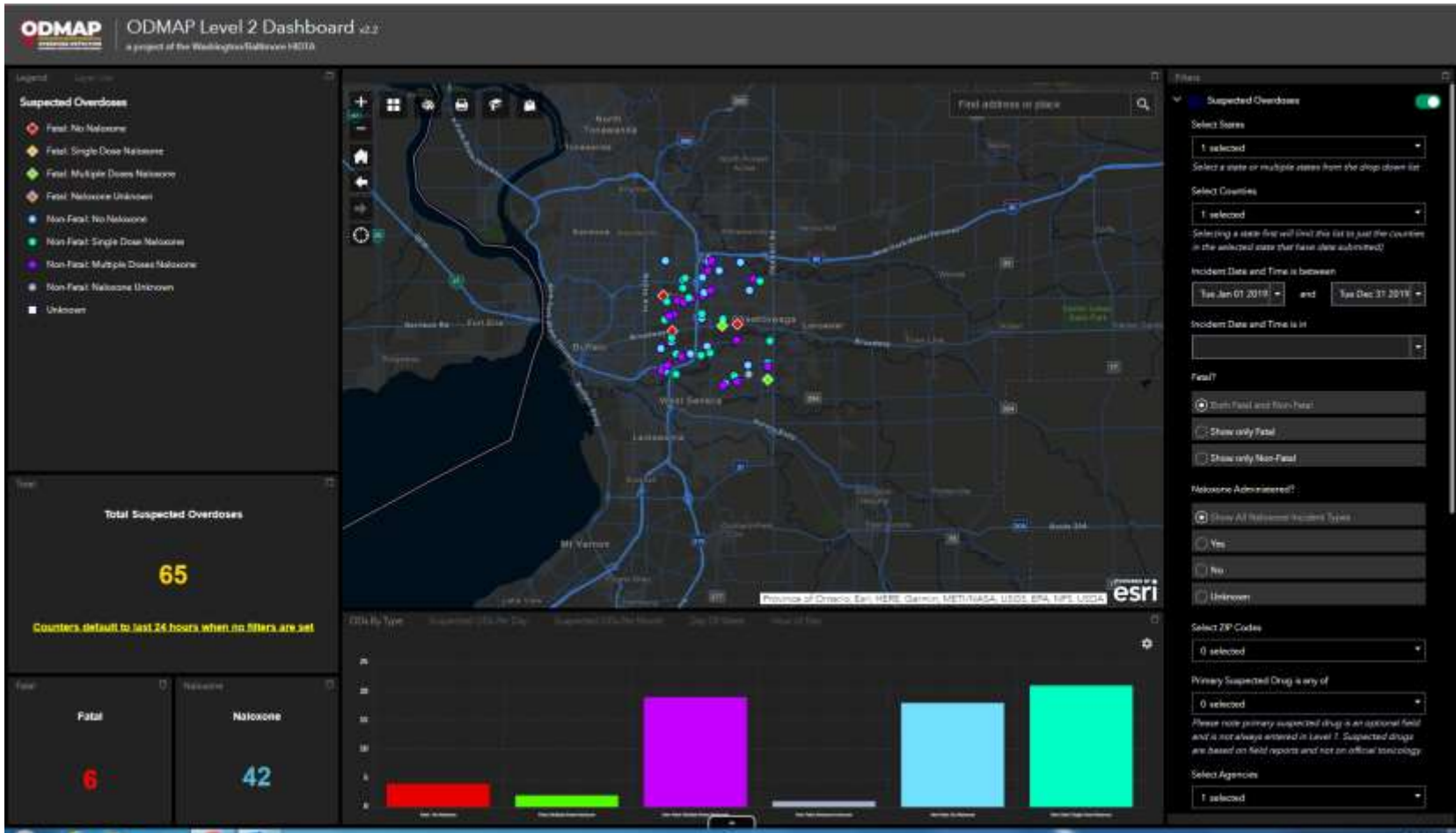


# ODMAP: 1/1/18 – 12/31/18

## CHEEKTOWAGA, NY



# ODMAP: 1/1/19 – 12/31/19 CHEEKTOWAGA, NEW YORK

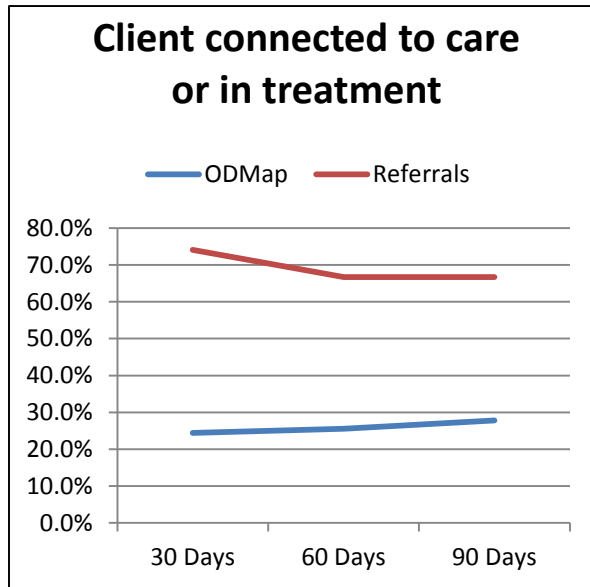


# Outcomes:

- ❑ Outcomes are from pilot implementation in multiple local police departments, with strong internal leadership and support for the project.
- ❑ 148 clients interacted with through DECEMBER 2019
- ❑ 9 local police departments currently participating in referral project (>1/3 of Erie County police departments)



# So what happened?



**Two definite categories of clients with defined success rates of initiated and continued connection to care:**

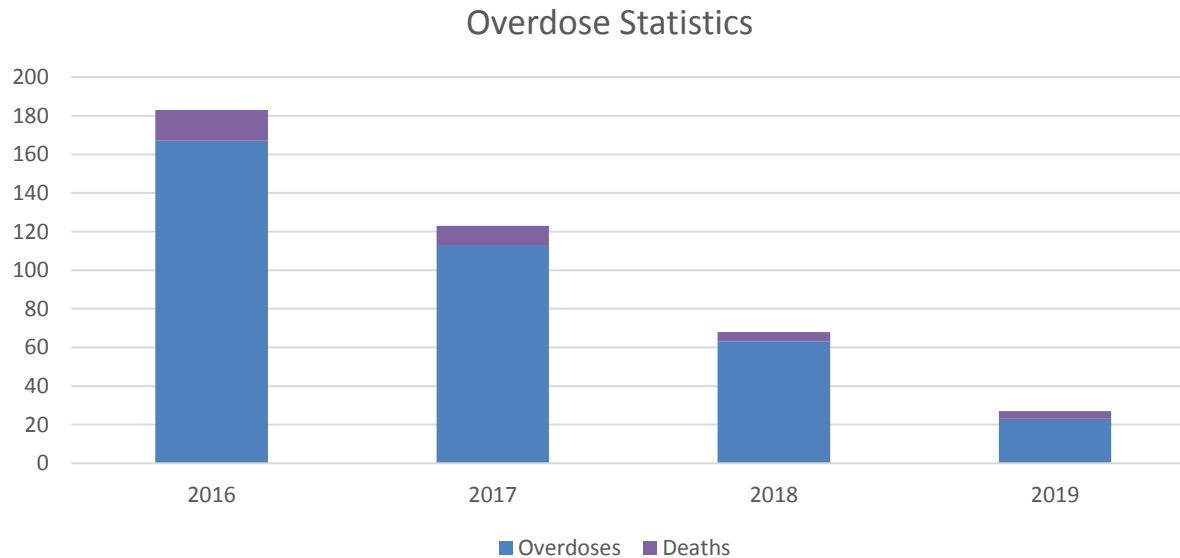
1. Direct referral to peer by law enforcement – much higher preliminary connection rate at 90 day point than identification of client through overdose event. Direct referral clients appear to experience a disconnection to care around the 60 day point, further investigation of the data is needed.
2. Client identified through overdose event that does connect to care appears to stay connected through the 90 day contact point more consistently, but at a much lower rate. Supported by associated research that suggests an overdose event is not a reason to agree to or feel that one needs treatment.



**Public Health**  
Prevent. Promote. Protect.

# Exciting Results!

## Cheektowaga, NY



Year	Overdoses	Deaths
2016	167	16
2017	113	10
2018	63	5
2019	23	4

2019 Numbers are  
Jan 1- June 30

# THIS IS WHY WE DO WHAT WE DO.....

**"RECOVERY FOR ME IS...  
LIFE, FAMILY AND ME."**

Antonio

**831-7007**

24 Hour Hotline • You Can Do It!

**Erie County  
Opiate Epidemic  
Task Force**

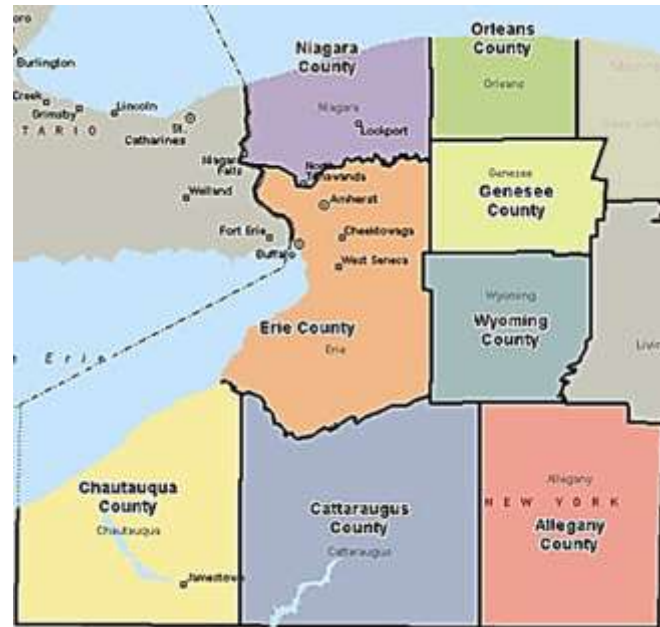
Supported by grant 1 N07CE002742, funded by the Centers for Disease Control and Prevention



**Erie County**  
**Opiate Epidemic**  
*Task Force*

# WNY Response After Overdose

## WNY RESPONSE AFTER OVERDOSE PROJECT



Erie County  
**HEALTH**



# Goals

## Objective 1: Supplies

Make opioid overdose reversal supplies available to first responders and key community sectors

## Objective 2: Training

Train and provide resources for first responders and key community sectors to carry and administer emergency treatment of opioid overdose

## Objective 3: Treatment

Establish processes, protocols, and mechanisms for referral to appropriate treatment and recovery

- Reduced opioid overdose fatalities
- Enhance pathways to connect those experiencing opioid addiction to treatment
- Reduced stigma around opioid addiction



**WNY** Response  
After Overdose



Erie County  
**HEALTH**

# Connecting to treatment

MATTERS & peer support

Addiction hotline & peer support

Peer network

- **51% of clients chose to have peer support**
- **2/3 callers with Opioid Use Disorder given treatment info**
- **1/3 callers (families & friends) given treatment info**
- **12/6/2019 COPE of WNY meeting (Community of Peer Enrichment)**



**WNY** Response  
After Overdose



Erie County  
**HEALTH**

# Responding to new Drug Trends with Education and Outreach



Erie County  
Department of  
Health



Public Health  
Prevent. Promote. Protect.

# Responding to new Drug Trends with Education and Outreach



Erie County  
Department of  
Health



Public Health  
*Prevent. Promote. Protect.*