

Opiate Epidemic Task Force: Naloxone Workgroup Updates

Erie County Health Department

Feb 4, 2019

Narcan Trainings this quarter (10.1.18 - 12.31.18)

- ▶ Continued naloxone trainings conducted by the department:
 - ▶ Community members - 527
 - ▶ Expanding TOTs - 60+ trainers trained!
 - ▶ EMS Staff, Medical Students - 102
 - ▶ Library Staff and patrons- 27
 - ▶ School personnel including health staff, teachers, administrators, building maintenance - 386
 - ▶ Volunteer firefighters - 64
 - ▶ Businesses: Colleges, malls, bars, public building staff, etc - 37
 - ▶ Law enforcement - 133
 - ▶ Street outreach - Community Wellness staff - 63
 - ▶ 641 Narcan kits distributed
 - ▶ 1276 individuals referred to pharmacy

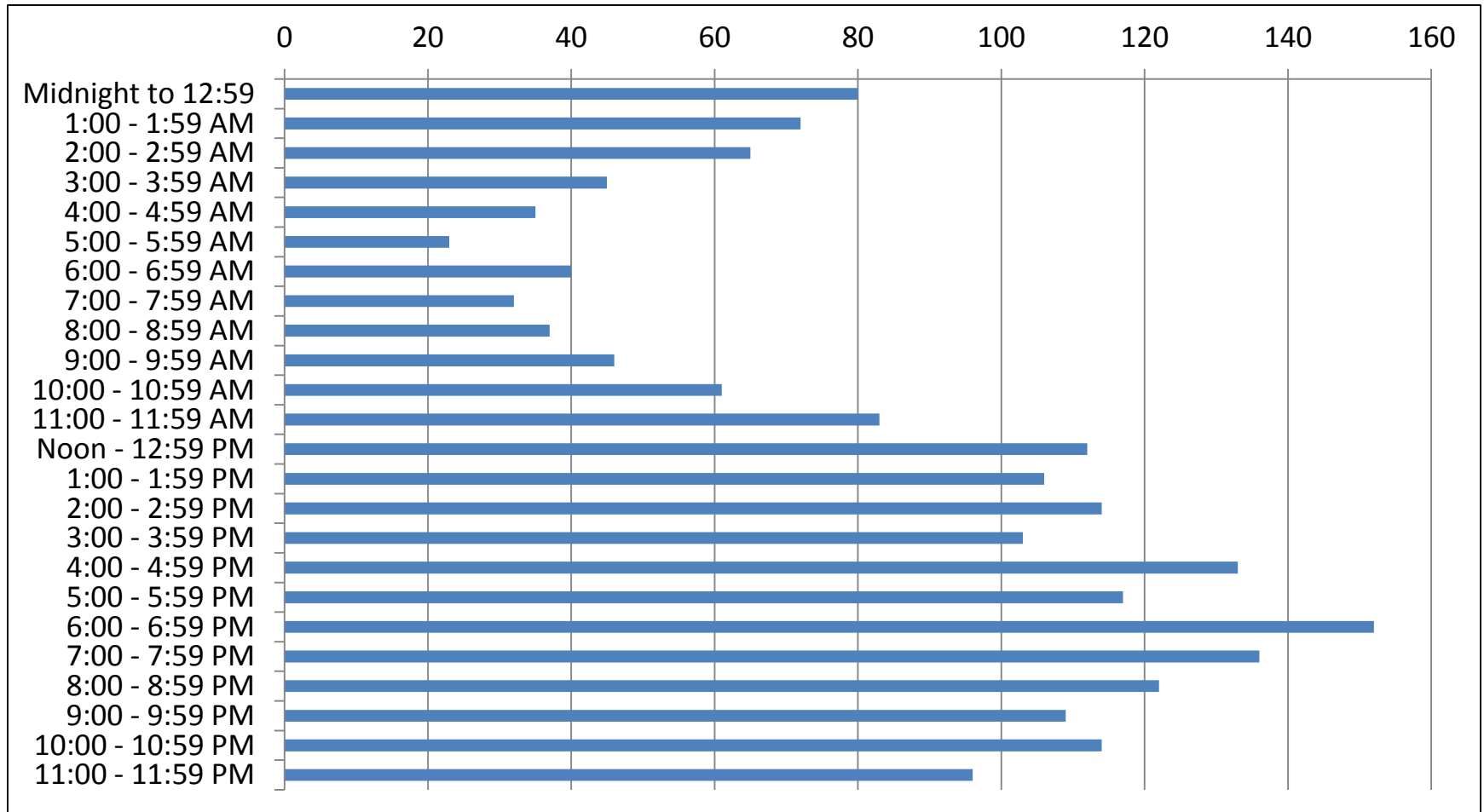
What's happening with naloxone/Narcan usage in WNY

- ▶ We're analyzing the data from the "naloxone usage forms"
- ▶ Both the Police/Fire forms; a snap shot follows

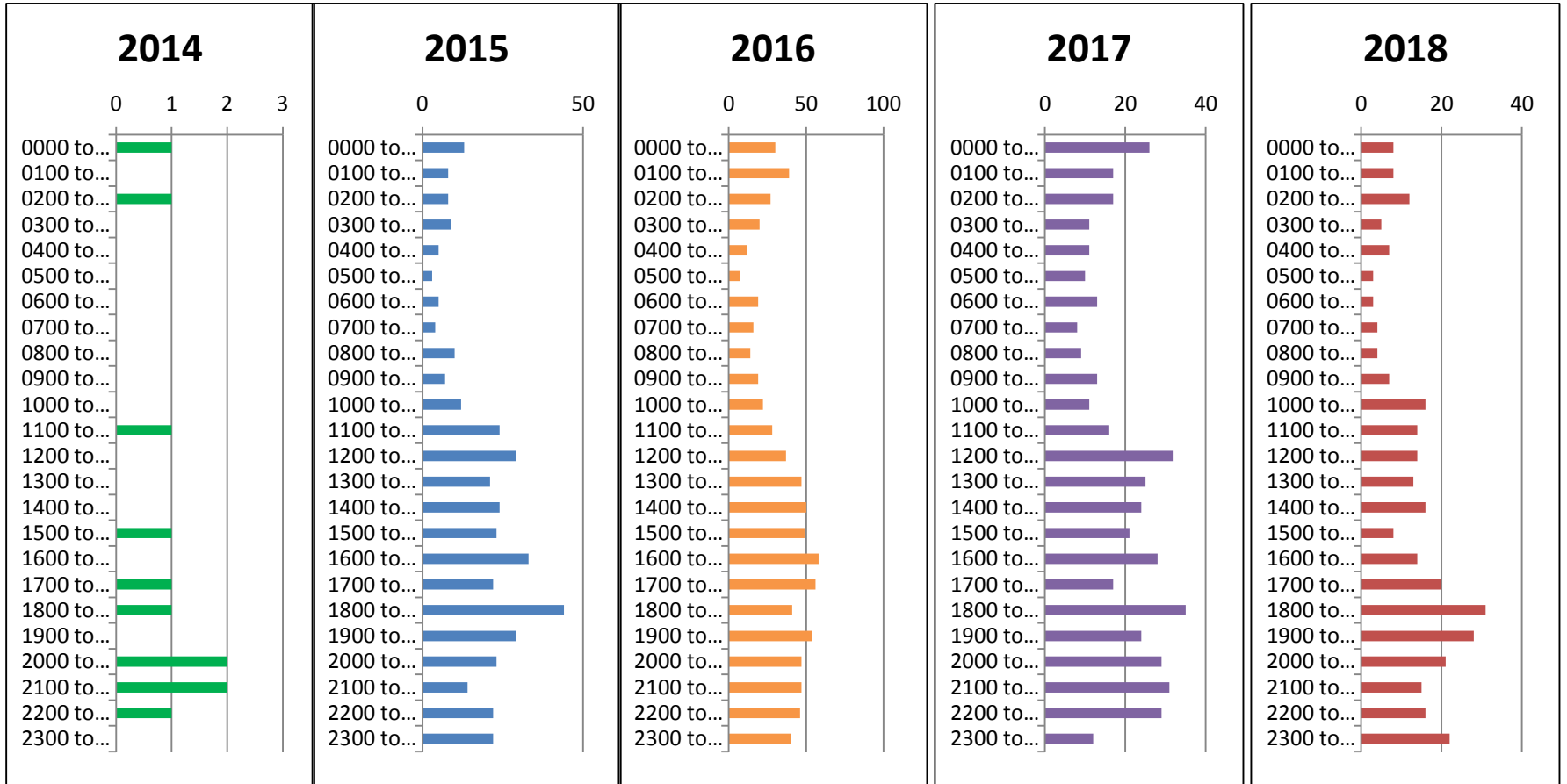
What's happening with naloxone/Narcan usage in WNY

- ▶ The following slides were created from the “opiate overdose reversal forms” that we collect from first responders specifically in the City of Buffalo
 - ▶ This has helped us understand the community affected
 - ▶ Each new batch of forms improves our data; so keep turning in those forms!

Time of Overdose, 1-hour blocks, excluding Unknowns, N = 2,033 2014 - Present



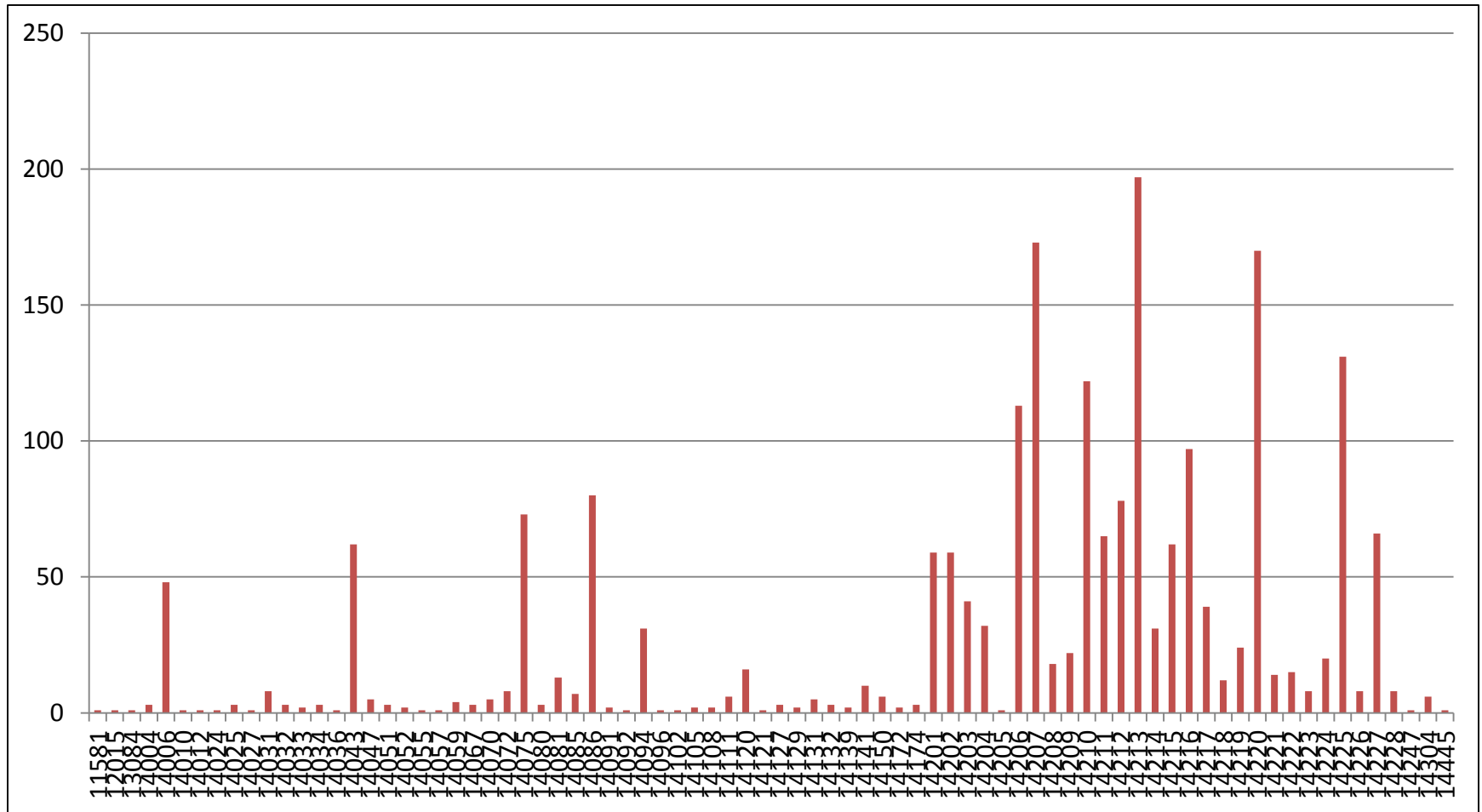
Time of Overdose, by Year



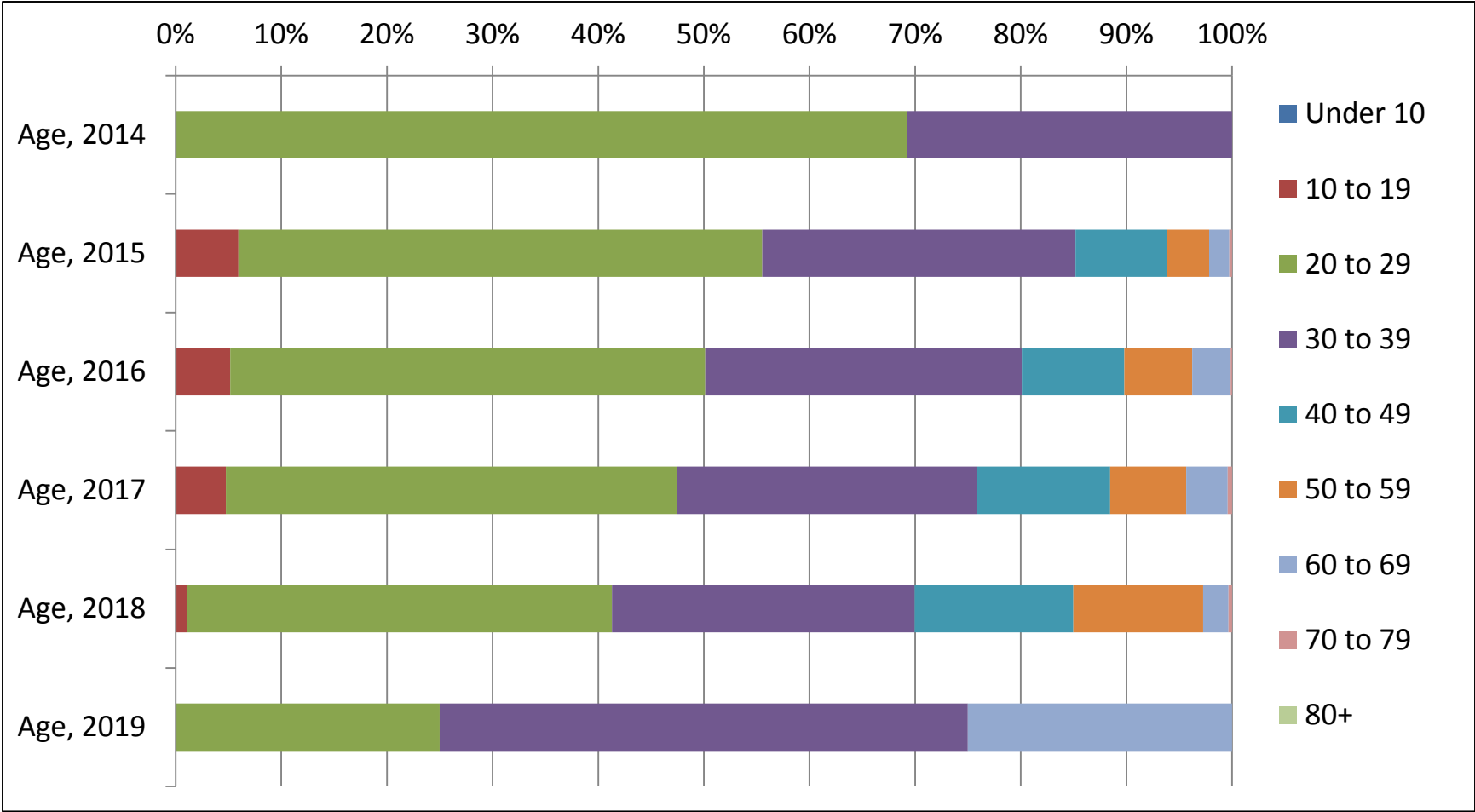
ZIP Codes, excluding Unknowns,

N = 2,141

2014 - Present

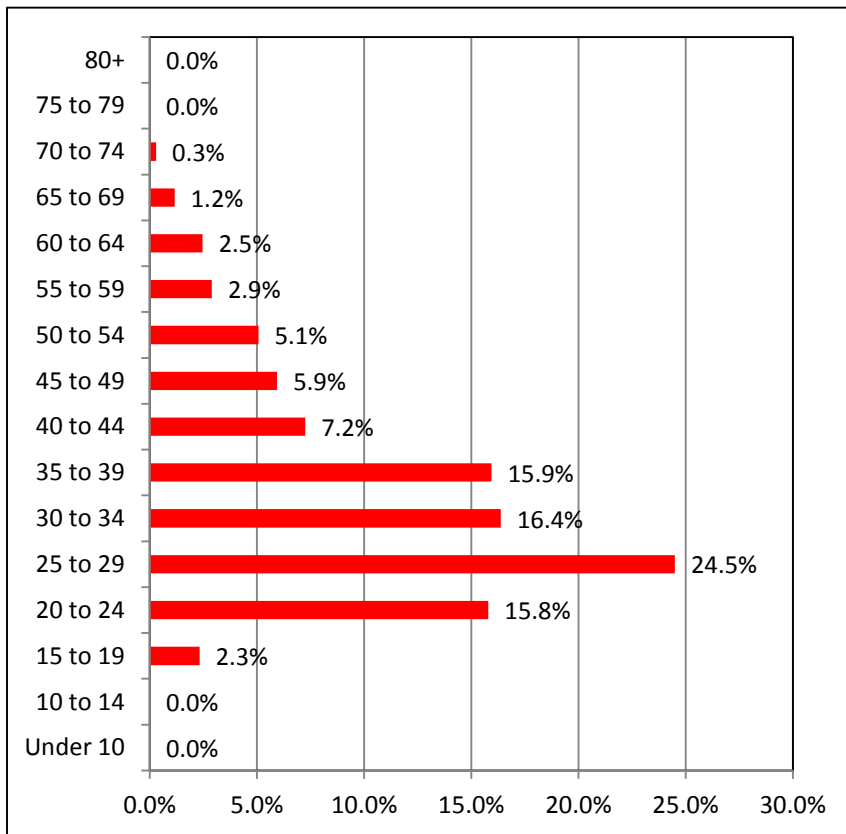


Age of OD, Excluding Unknown, N = 1,960 (as of 1/23/2019)

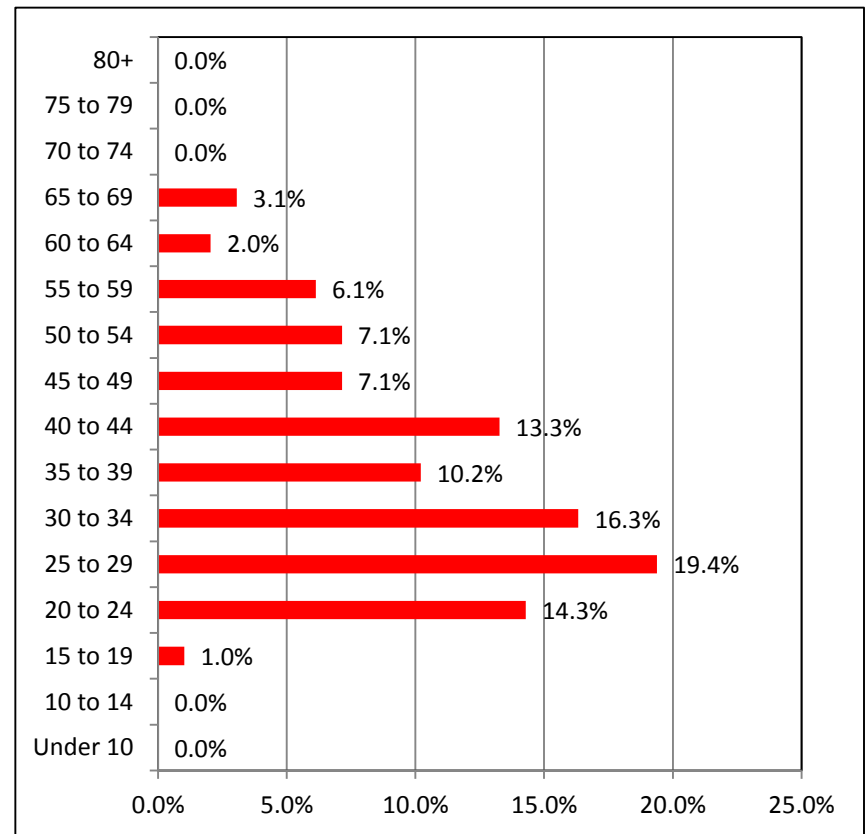


Age Breakdown, Percentage, Buffalo Fire Department (Unknown ages excluded, percentage of known ages)

All BFD (N = 690)

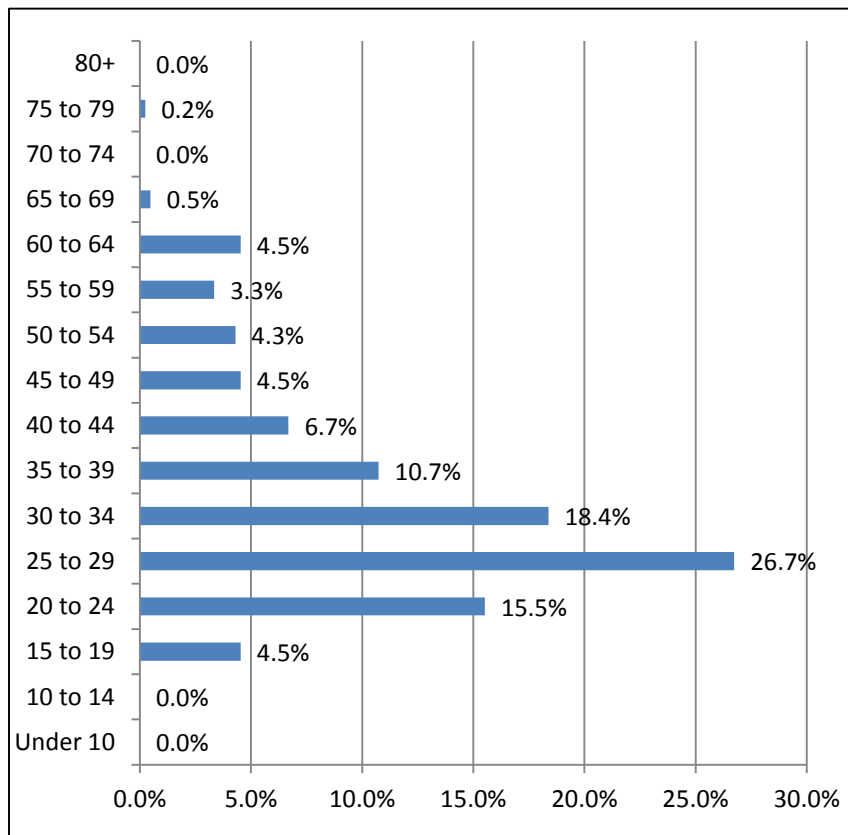


BFD, 2018 Only (N = 98)

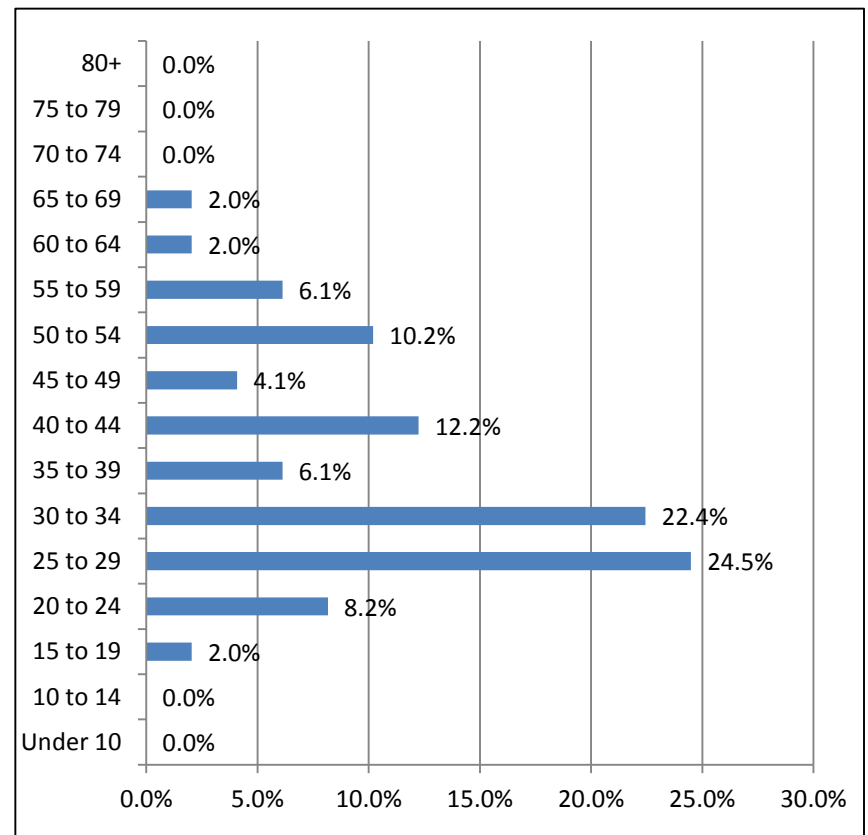


Age Breakdown, Percentage, Buffalo Police Department (Unknown ages excluded, percentage of known ages)

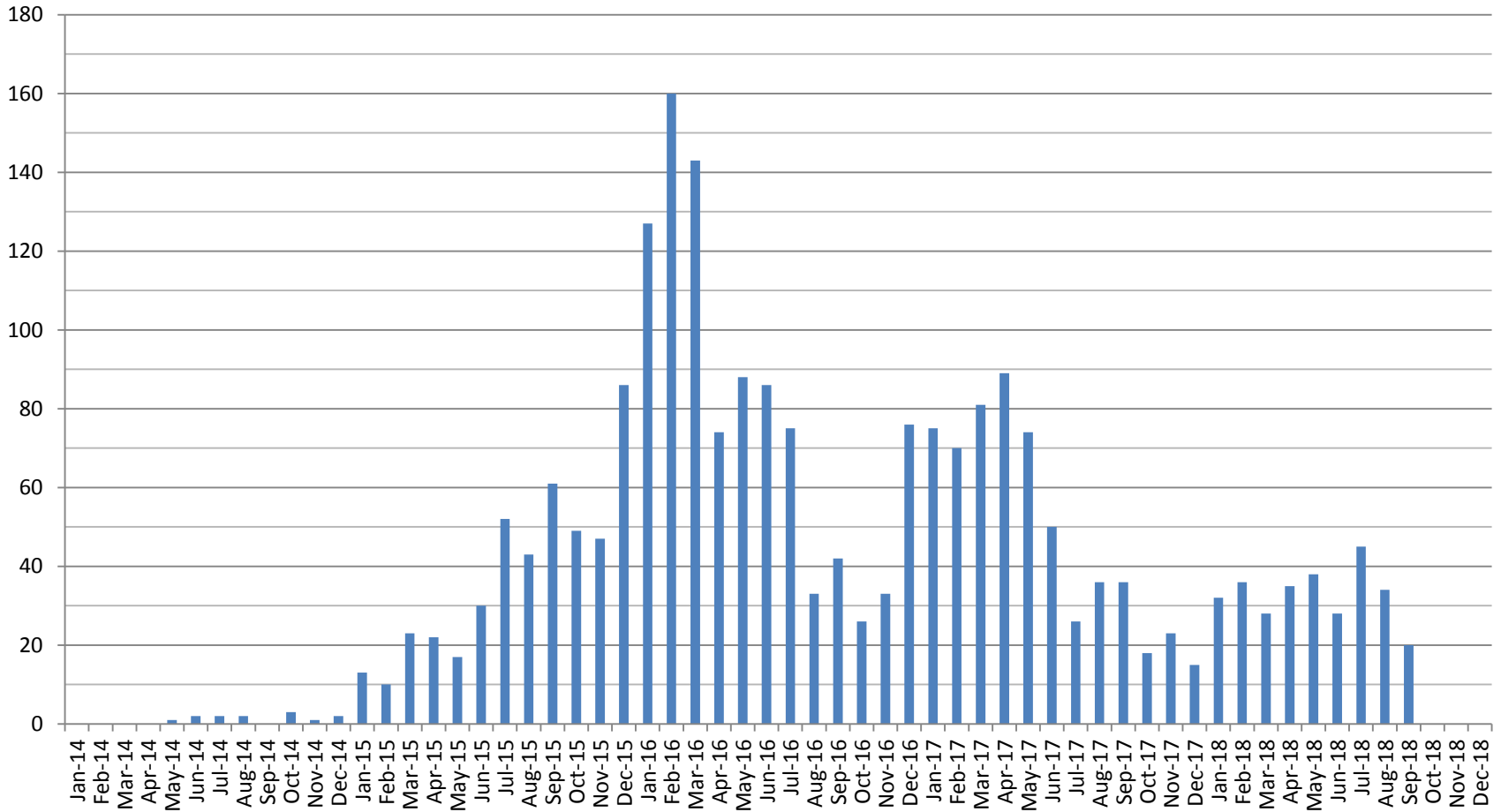
All BPD (N = 419)



BPD, 2018 Only (N = 49)



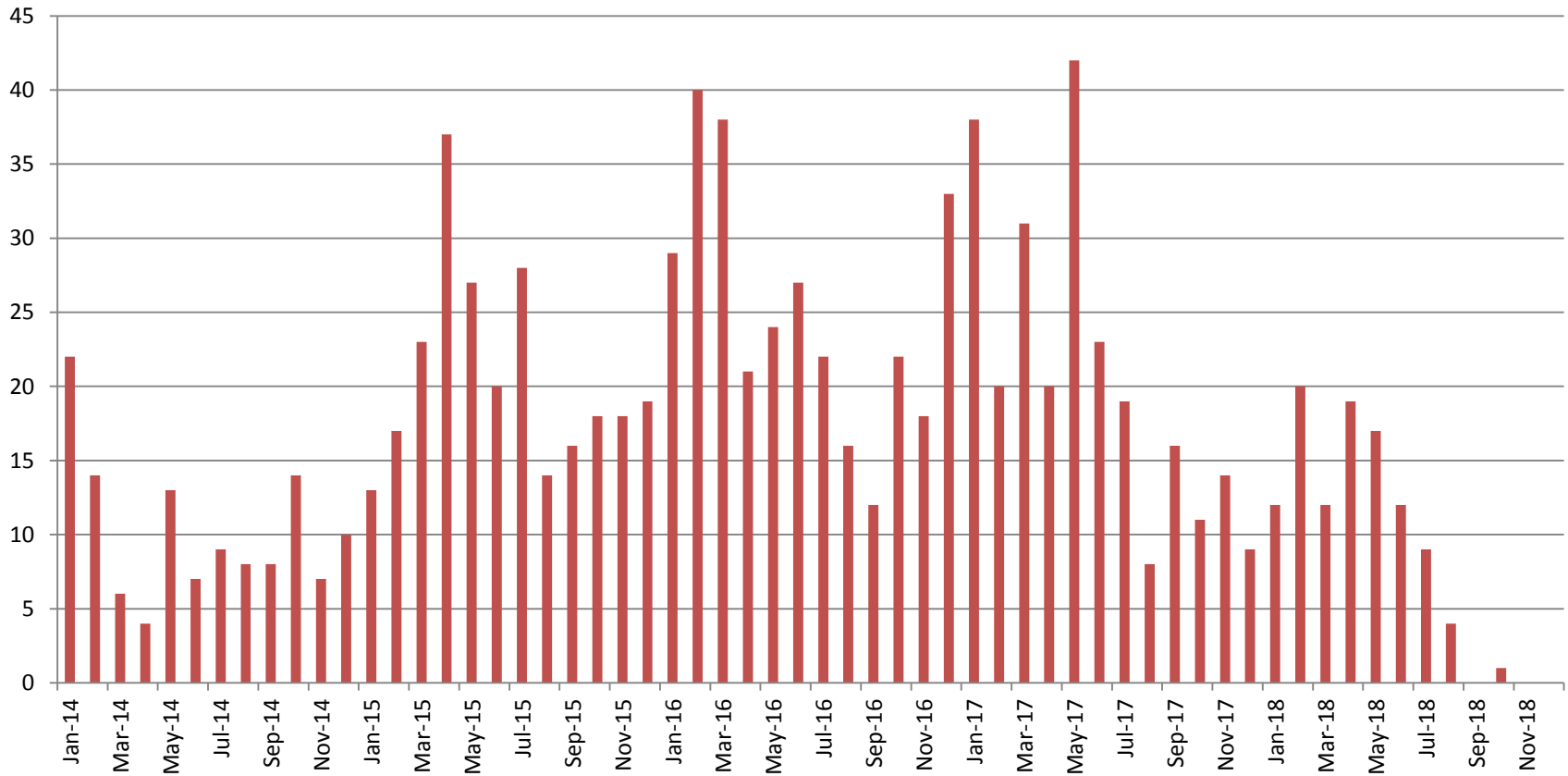
OD's by Month, 2014-18



Last update: Thu 11 Oct 2018

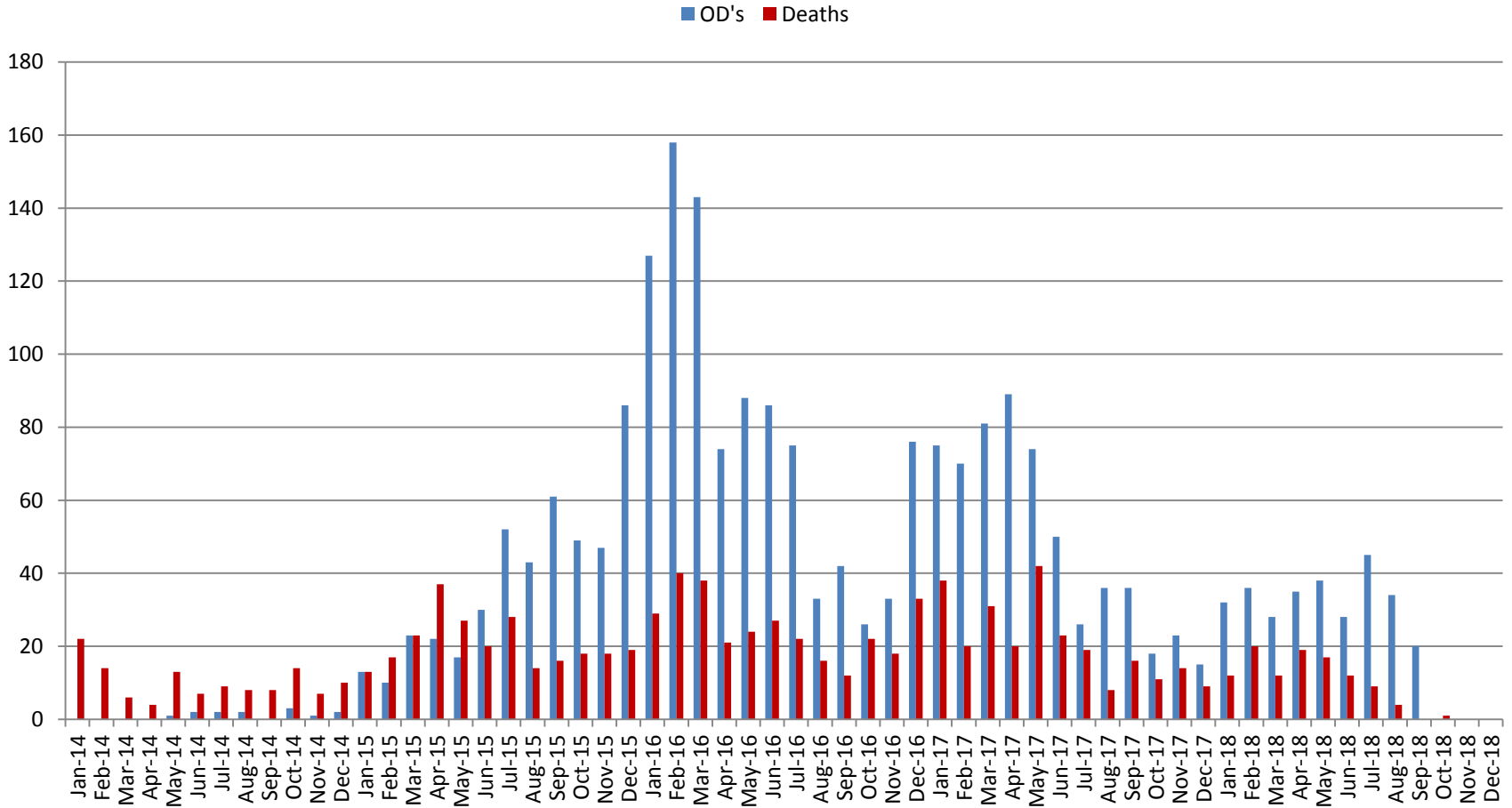
Deaths by Month, 2014-18

Deaths



Last update: Thu 11 Oct 2018

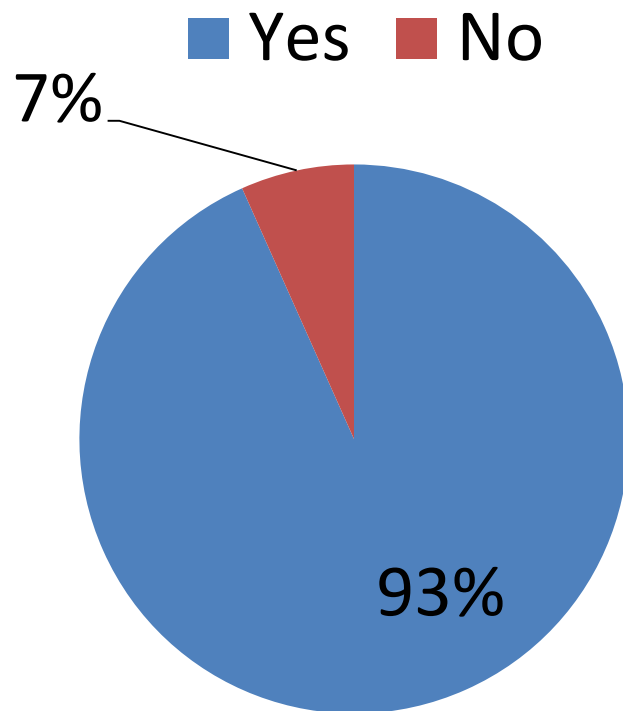
Deaths vs OD's, 2014-18

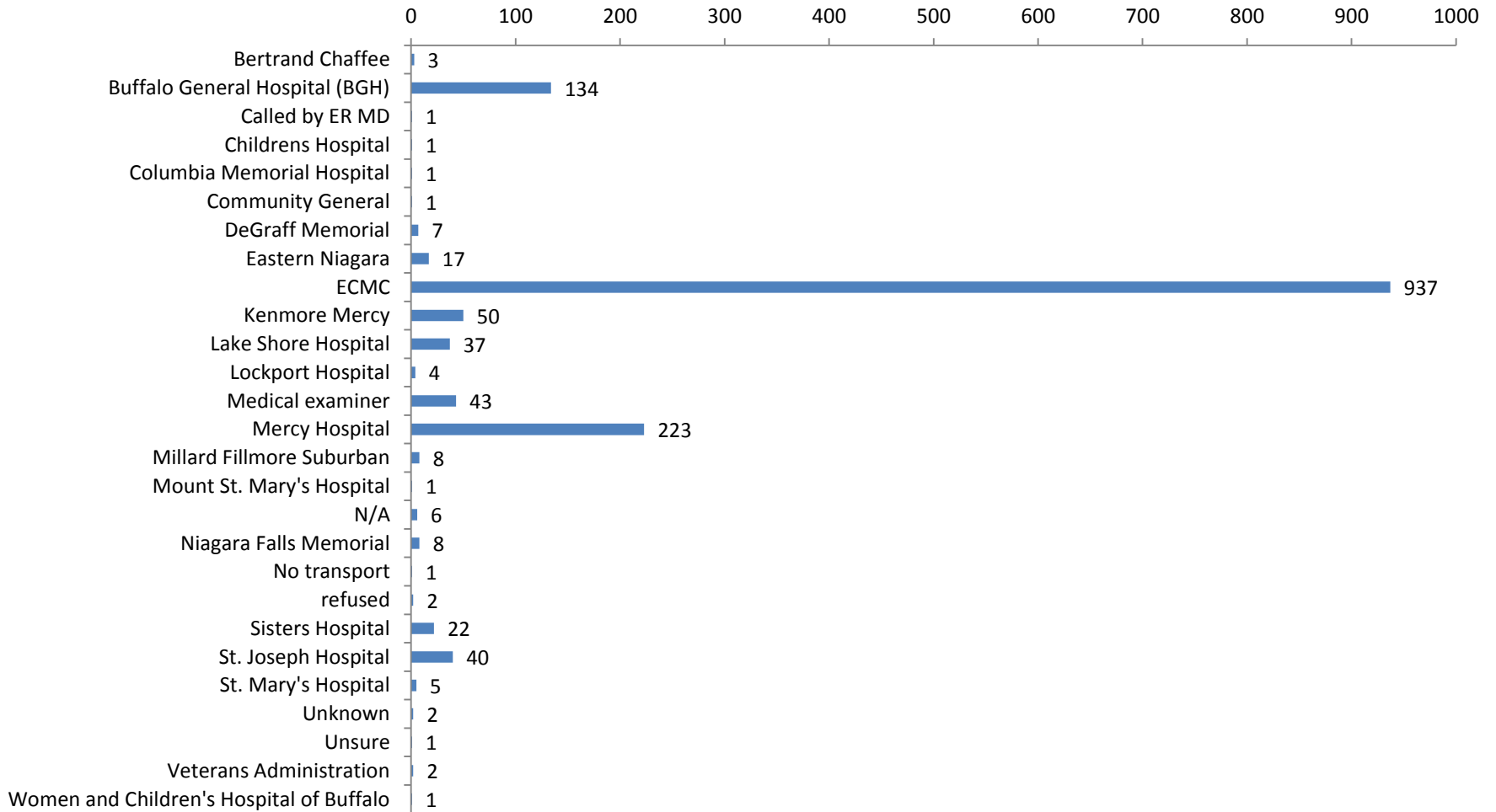


Last update: Thu 11 Oct 2018

**Survival for Transport to Hospital,
excluding Unknowns, N = 2,320
2014 - Present**

Did person survive for transport?





Overdose Transport Sites

- 1,558 entries (excluding Unknowns)
- Dates from May 2014 through Nov 2017

Notes

- ▶ Overdose data is from forms completed by police officers and firefighters after administering Narcan.
 - ▶ The database expands each time we enter more forms.
 - ▶ It is possible that multiple reports have been completed for the same individuals at different time points (repeat overdoses).
- ▶ Death data is from the Medical Examiner's office.

Additional Naloxone Workgroup Activities

New Project - “Community Narcan Access Sites”

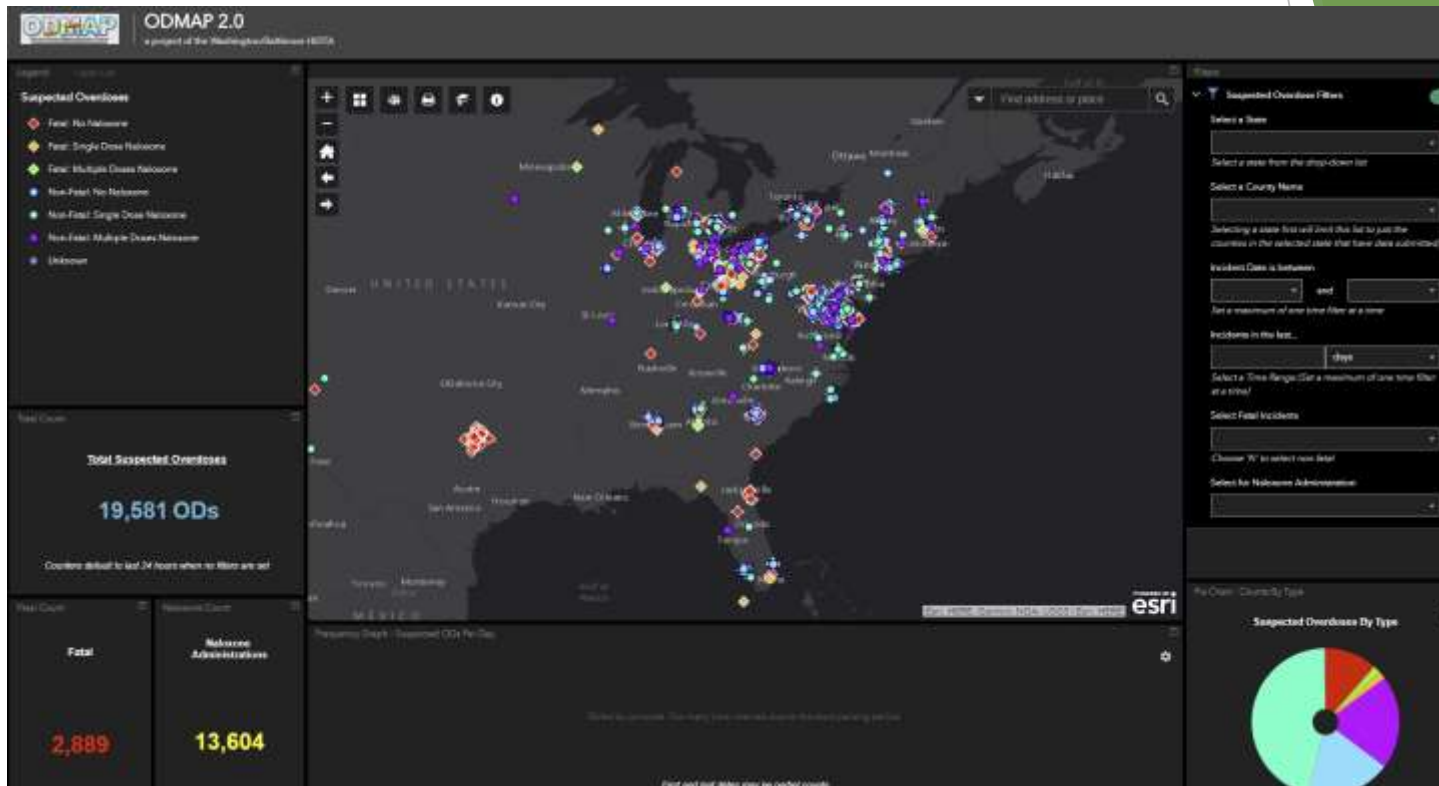
- ▶ 6 to date, continue to recruit
 - ▶ Sparks of Hope
 - ▶ Roadhouse Tattoo
 - ▶ Good Shepherd Church
 - ▶ Assemblyman Sean Ryan - Grant St Office
 - ▶ St Bernadette Church - Orchard Park
 - ▶ Union Fire Hall - West Seneca

Additional Naloxone Workgroup Activities

Response After Overdose Peer Response Pilot with Cheektowaga Police Department in collaboration with REAP workgroup

- ▶ Established September 1, 2017
- ▶ Utilizes “ODMAP” program and police report system
- ▶ Creates partnerships with law enforcement, public health, peers in recovery
- ▶ Provides peer support for linkage to treatment (MAT) for individuals experiencing an overdose within 1 -5 days depending on the individual situation

ODMAP Platform



Additional Naloxone Workgroup Activities

***Cheektowaga Response
After Overdose
Pilot Project
1 year in***

Erie County New York Peer and First Responder Response After Overdose Utilizing ODMAP



Creating a collaborative response to the Opioid Overdose Epidemic in Erie County NY between First Responders, Public Health, and Peers in recovery

Steps to development

Where are we today

Lessons learned

Changes being implemented



Where are we today?

- ❑ Preliminary outcomes are from 1 year pilot implementation in 1 local police department with strong internal leadership and support for the project. Modifications were made at multiple times throughout the year.
- ❑ 9/1/17 - 12/31/18
- ❑ 93 clients interacted with by Peer



Lessons Learned:

- ❑ Collaboration and trust are essential to success.
- ❑ Use Data!
- ❑ If something isn't working, change it and move on.
- ❑ Constantly assess data and results, work as a team to create new processes to increase connection to care. Develop community provider relationships to assist clients with accessing care in a timely manner.



Lessons Learned:

- ❑ Provide consistent evidence based training for Peers and Police
- ❑ Families and loved ones can be the person struggling with SUD's best support or worst barrier to care. Working with them is essential.
- ❑ Relapse will happen, assist the person with reconnection to care, do not judge, assist first responders in dealing with their frustrations.



Changes Being Implemented:

- ❑ Formal release of information process being developed to allow Peer to follow up with providers to hopefully assist with relapse prevention support at a higher rate with access to provider recommendation as well as individual reports of treatment success.
- ❑ Support for law enforcement being developed in future training
- ❑ Recognition of lifesaving efforts of officers being implemented.
- ❑ Team is meeting weekly to assess data, working with Peer team to develop new and additional strategies for keeping clients connected with care.

