



NEW YORK STATE AND ERIE COUNTY WEEKLY RESPIRATORY SURVEILLANCE REPORT WEEK ENDING NOVEMBER 8, 2025

New York State Department of Health (NYSDOH) Respiratory Surveillance

A. NYSDOH Weekly Summary:

Influenza

- 2,400 laboratory-confirmed cases were reported this week. This is a 78% increase from the previous week.
- There have been 0 influenza-associated pediatric deaths reported this season.

COVID-19

- 2,028 laboratory-confirmed cases were reported this week. This is an 11% decrease from the previous week.
- There have been 0 COVID-19-associated pediatric deaths reported this season.

RSV

- 1,040 laboratory-confirmed cases were reported this week. This is a 41% increase from the previous week.
- There have been 0 RSV-associated pediatric deaths reported this season.

Source: [NYSDOH Respiratory Surveillance Report](#)

Influenza Laboratory-Confirmed Cases²

	<u>Cases:</u>
Current Week:	2,400
Previous Week:	1,348
% Change from Previous Week:	78% ▲
Season-to-Date:	6,378

COVID-19 Laboratory-Confirmed Cases²

	<u>Cases:</u>
Current Week:	2,028
Previous Week:	2,288
% Change from Previous Week:	-11% ▼
Season-to-Date:	17,170

RSV Laboratory-Confirmed Cases²

	<u>Cases:</u>
Current Week:	1,040
Previous Week:	736
% Change from Previous Week:	41% ▲
Season-to-Date:	3,732

Influenza Hospitalizations³

	<u>Hospitalizations:</u>
Current Week:	110
Previous Week:	72
% Change from Previous Week:	53% ▲
Season-to-Date:	324

COVID-19 Hospitalizations³

	<u>Hospitalizations:</u>
Current Week:	300
Previous Week:	298
% Change from Previous Week:	1% ▲
Season-to-Date:	2,238

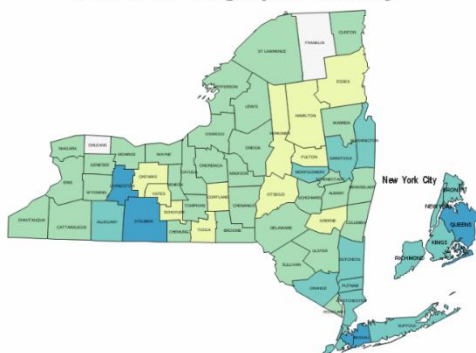
RSV Hospitalizations³

	<u>Hospitalizations:</u>
Current Week:	90
Previous Week:	53
% Change from Previous Week:	70% ▲
Season-to-Date:	307

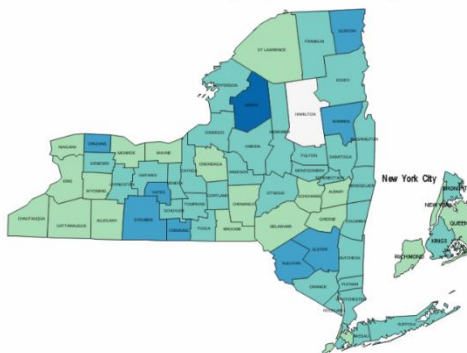
Trend Since Last Report Legend: ▲ = Increasing ▼ = Decreasing ► = Stable

B. NYS County Summary:

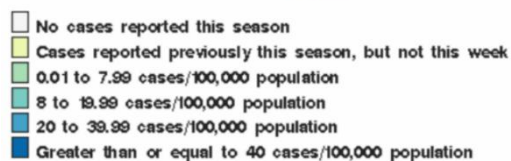
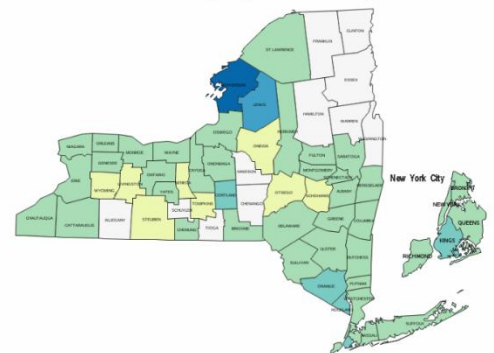
Influenza Geographic Activity



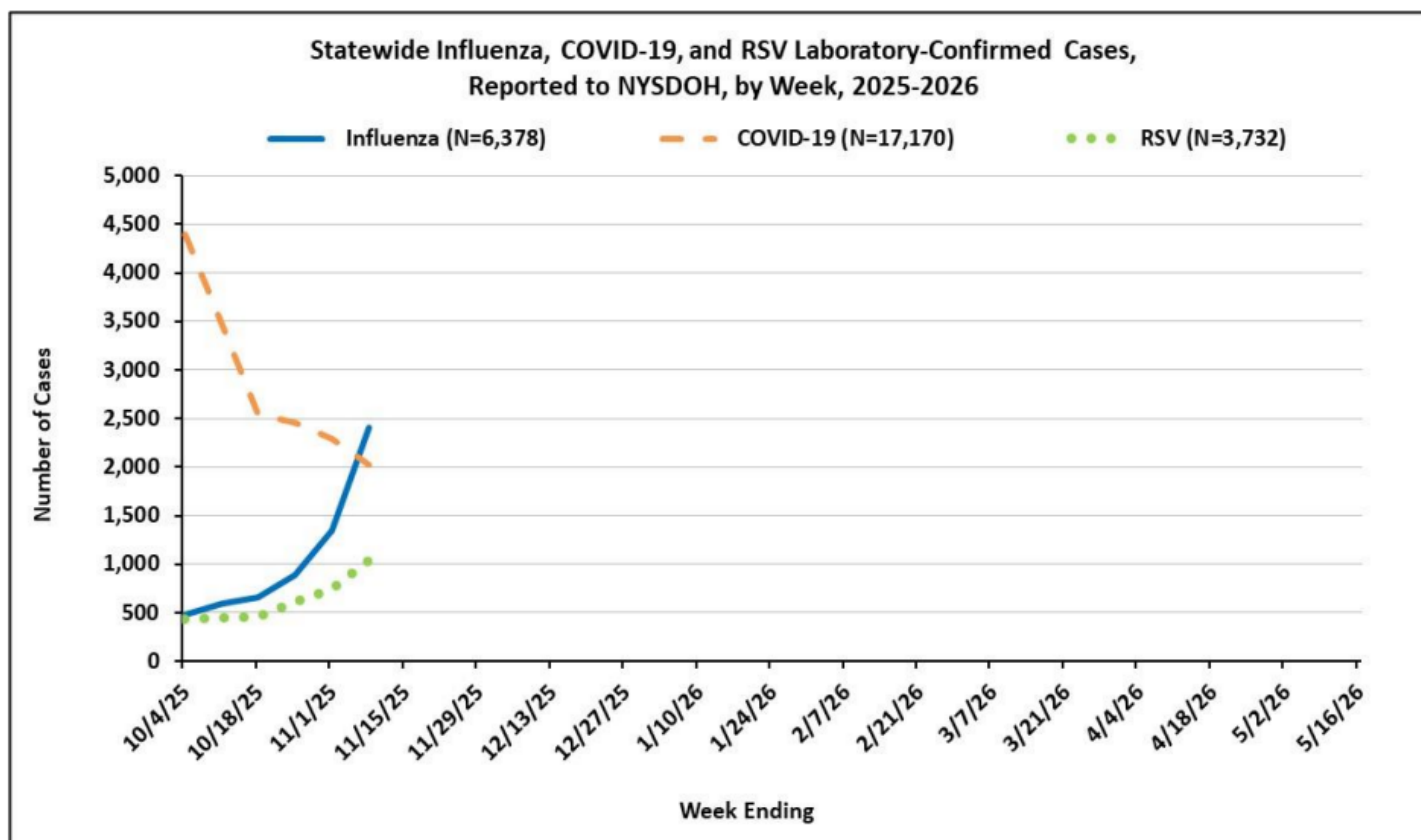
COVID-19 Geographic Activity



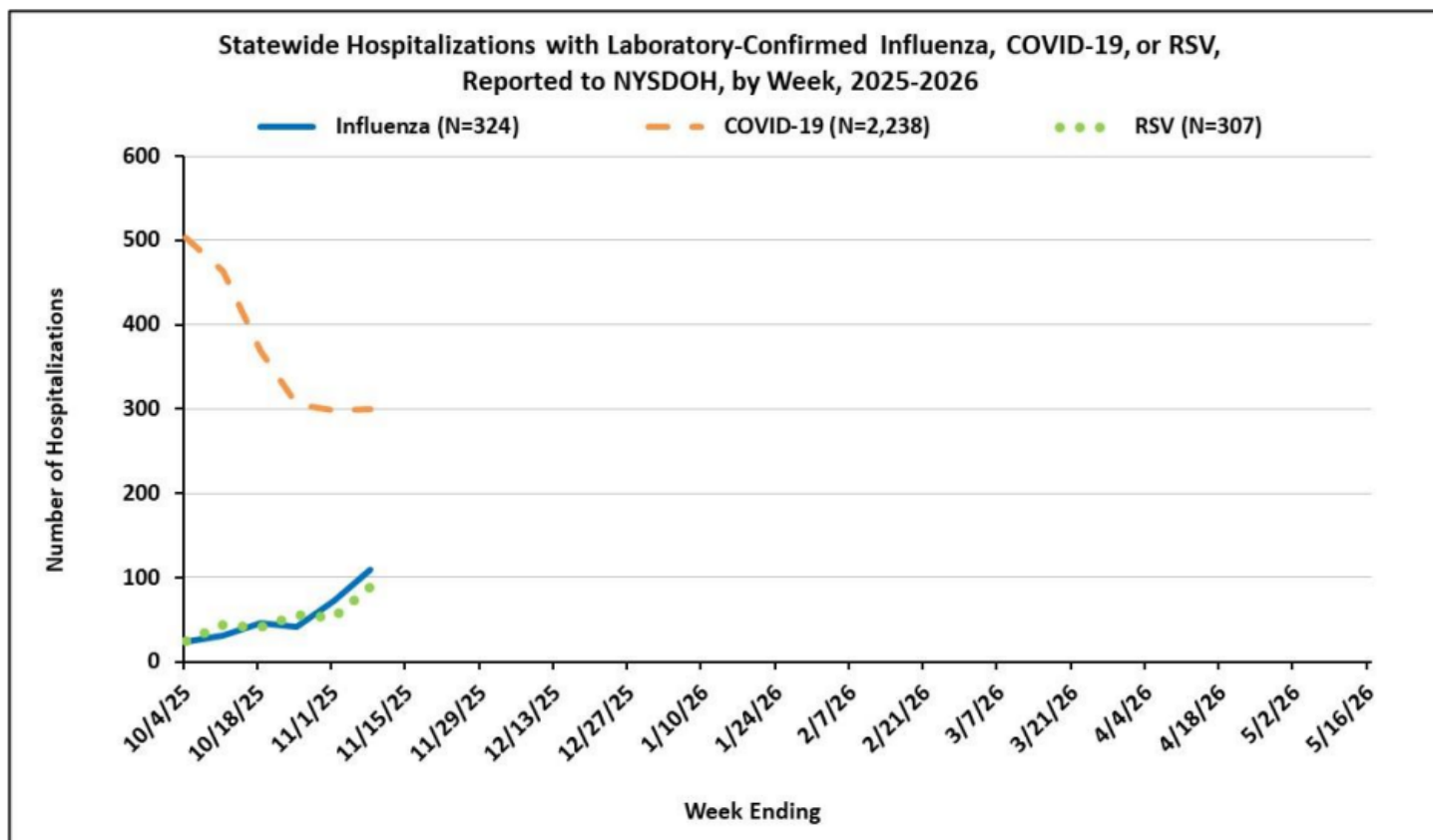
RSV Geographic Activity



C. NYS – Laboratory-Confirmed Cases of Influenza, COVID-19, and RSV



D. NYS – Hospitalizations with Laboratory-Confirmed Influenza, COVID-19, or RSV

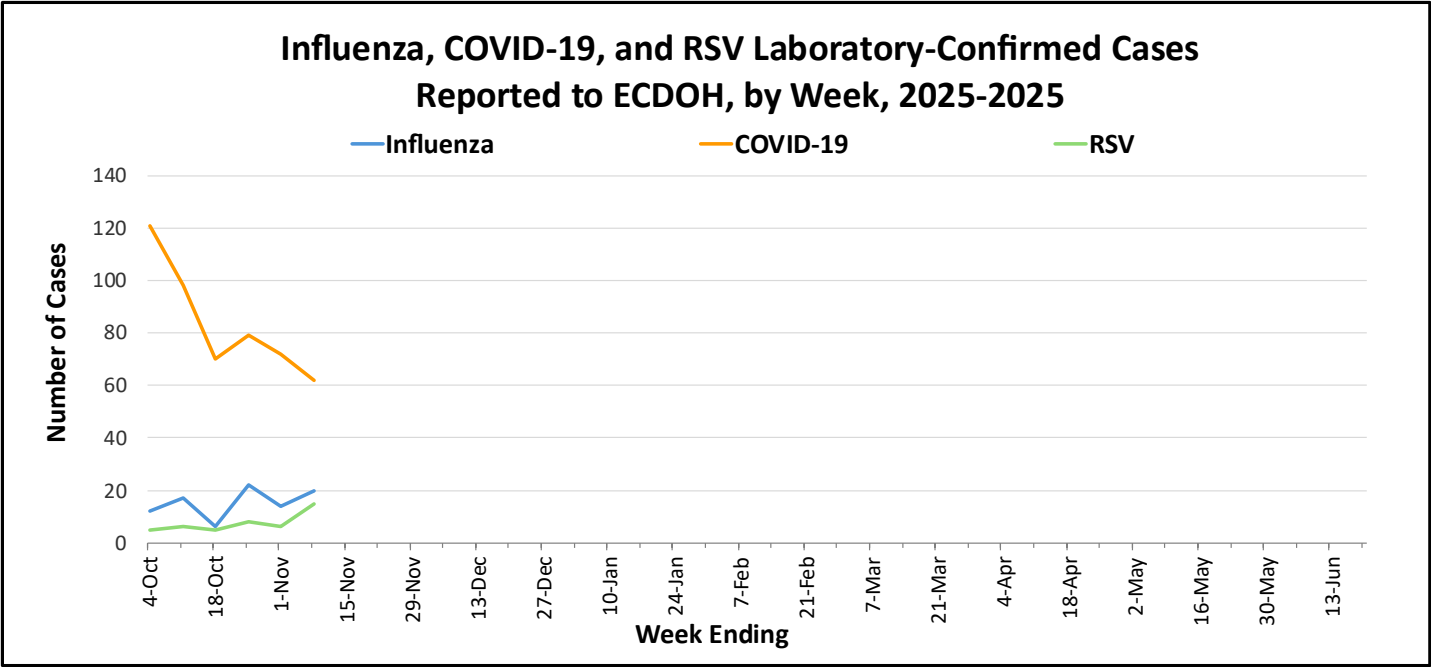


Erie County Department of Health (ECDOH) Respiratory Surveillance

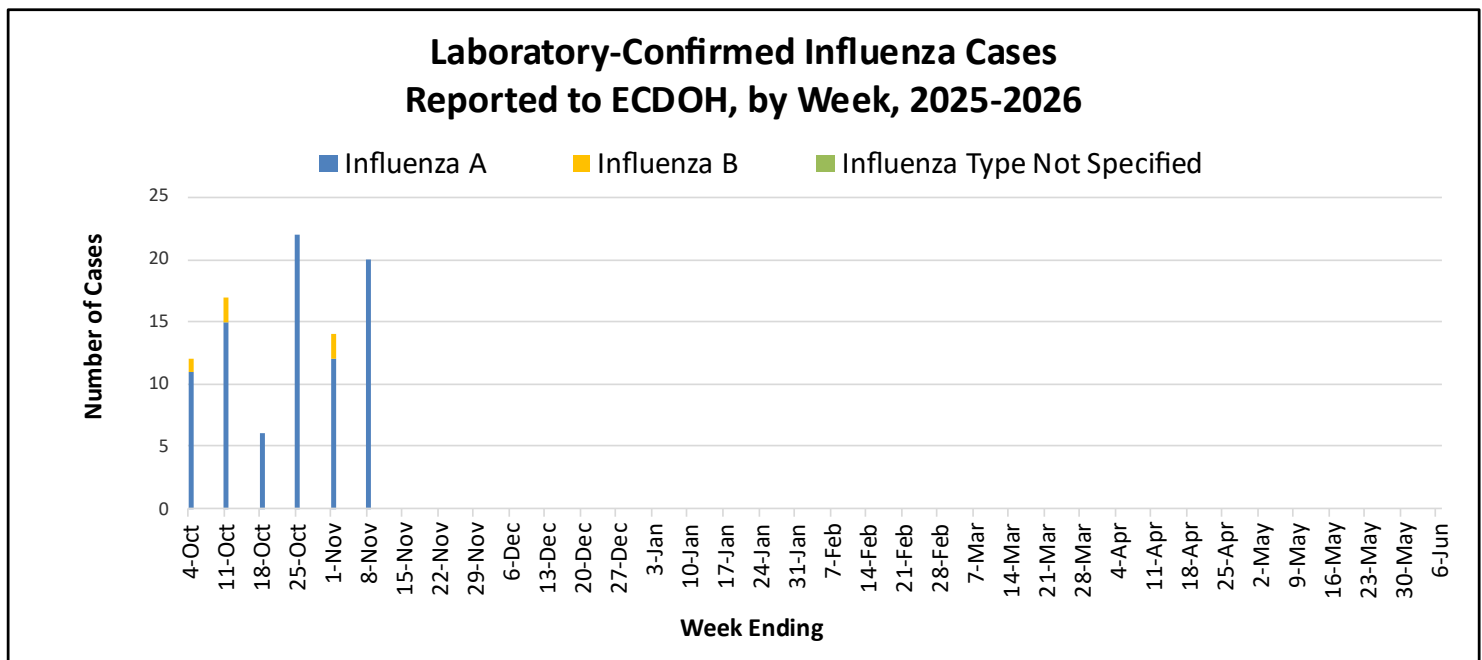
A. ECDOH Weekly Summary:

- Influenza
- 20 laboratory-confirmed cases were reported this week. This is a slight increase compared to the 14 laboratory-confirmed cases reported the previous week.
 - Of 20 positive laboratory-confirmed influenza reports, 20 were positive for influenza A and 0 were positive for influenza B.
 - There have been 0 influenza-associated pediatric deaths reported to Erie County this season.
- COVID-19
- 62 laboratory-confirmed cases were reported this week. This is a 14% decrease from the previous week.
 - There have been 0 COVID-19-associated pediatric deaths reported to Erie County this season.
- RSV
- 15 laboratory-confirmed cases were reported this week. This is a slight increase compared to the 6 laboratory-confirmed cases reported the previous week.
 - There have been 0 RSV-associated pediatric deaths reported to Erie County this season.

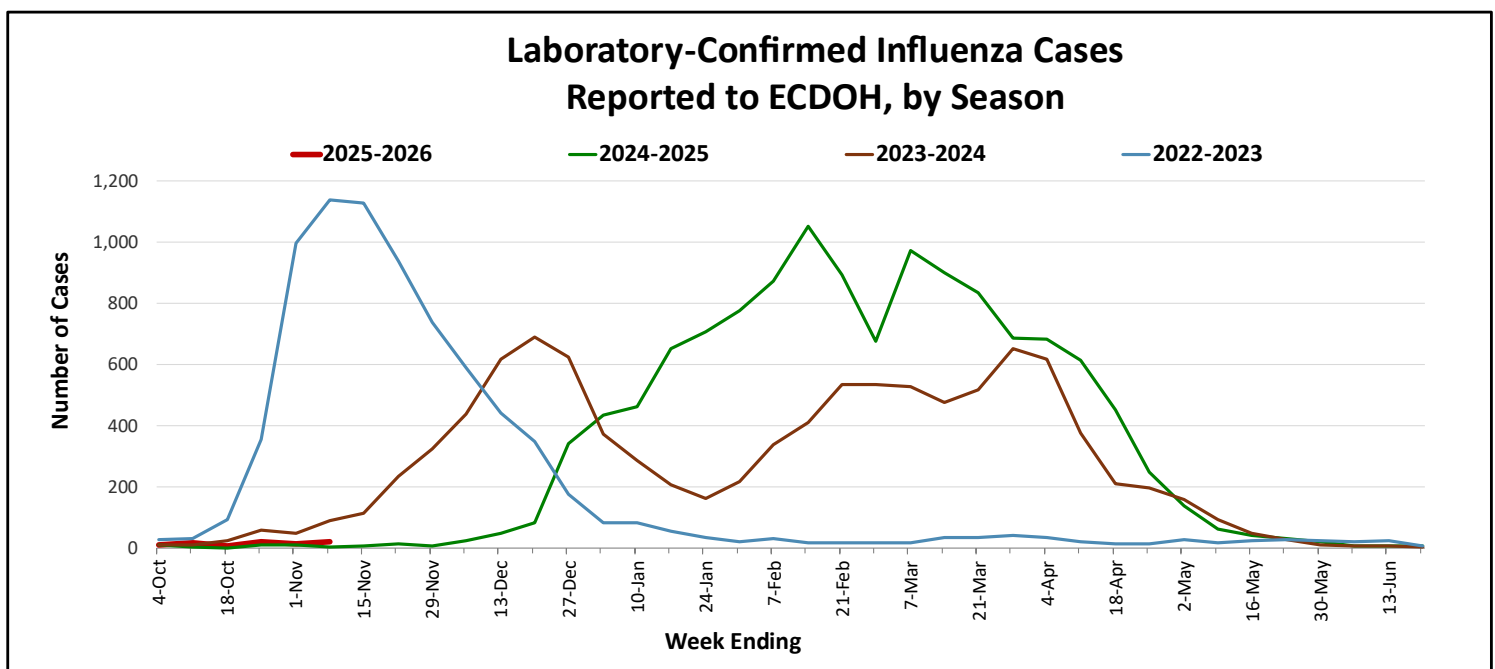
B. Erie County – Laboratory-Confirmed Cases of Influenza, COVID-19, and RSV



C. Erie County – Laboratory-Confirmed Cases of Influenza by Week



D. Erie County - Laboratory-Confirmed Cases of Influenza by Season



Influenza Data Sources and Methods:

Reporting of laboratory-confirmed influenza is mandated under the New York State Sanitary Code (10NYCRR 2.10) and Public Health Law (PHL 2102). Full-service licensed clinical laboratories, and optionally, other laboratories, electronically report positive influenza laboratory test results via the NYSDOH Electronic Clinical Laboratory Reporting System (ECLRS). Influenza data reported to ECLRS is not intended to represent all influenza illnesses as clinical diagnoses, diagnoses based on testing in doctors' offices (e.g., rapid tests), and diagnoses based on serology are not required to be reported to NYSDOH. Despite these limitations, the data can provide useful situational awareness (e.g, trend) information during an influenza season.

ECDOH collects, compiles, analyzes information on influenza activity and generates this report weekly during the influenza season (October through the following May).

For More Information:

- [Erie County Department of Health – Influenza \(Flu\) Information](#)
- [New York State Department of Health Influenza Activity Report](#)
- [New York State Department of Health Flu Tracker](#)

¹ Information about respiratory monitoring in New York City (NYC) is available from the NYC Department of Health and Mental Hygiene website at: https://www.nyc.gov/assets/doh/respiratory-illness-data/index.html#. National respiratory surveillance data are available on the CDC's Respiratory Illness Data Channel website at: <https://www.cdc.gov/respiratory-viruses/data/index.html>.

² The [Electronic Clinical Laboratory Reporting System \(ECLRS\)](#) provides laboratories that serve New York State with a single electronic system for secure and rapid transmission of reportable disease information to the New York State Department of Health (NYSDOH), county health departments, and the New York City Department of Health and Mental Hygiene (NYCDOHMH).

³ Hospitals report weekly the number of patients hospitalized with confirmed influenza, COVID-19, and RSV to the [Health Electronic Response Data System \(HERDS\)](#).