

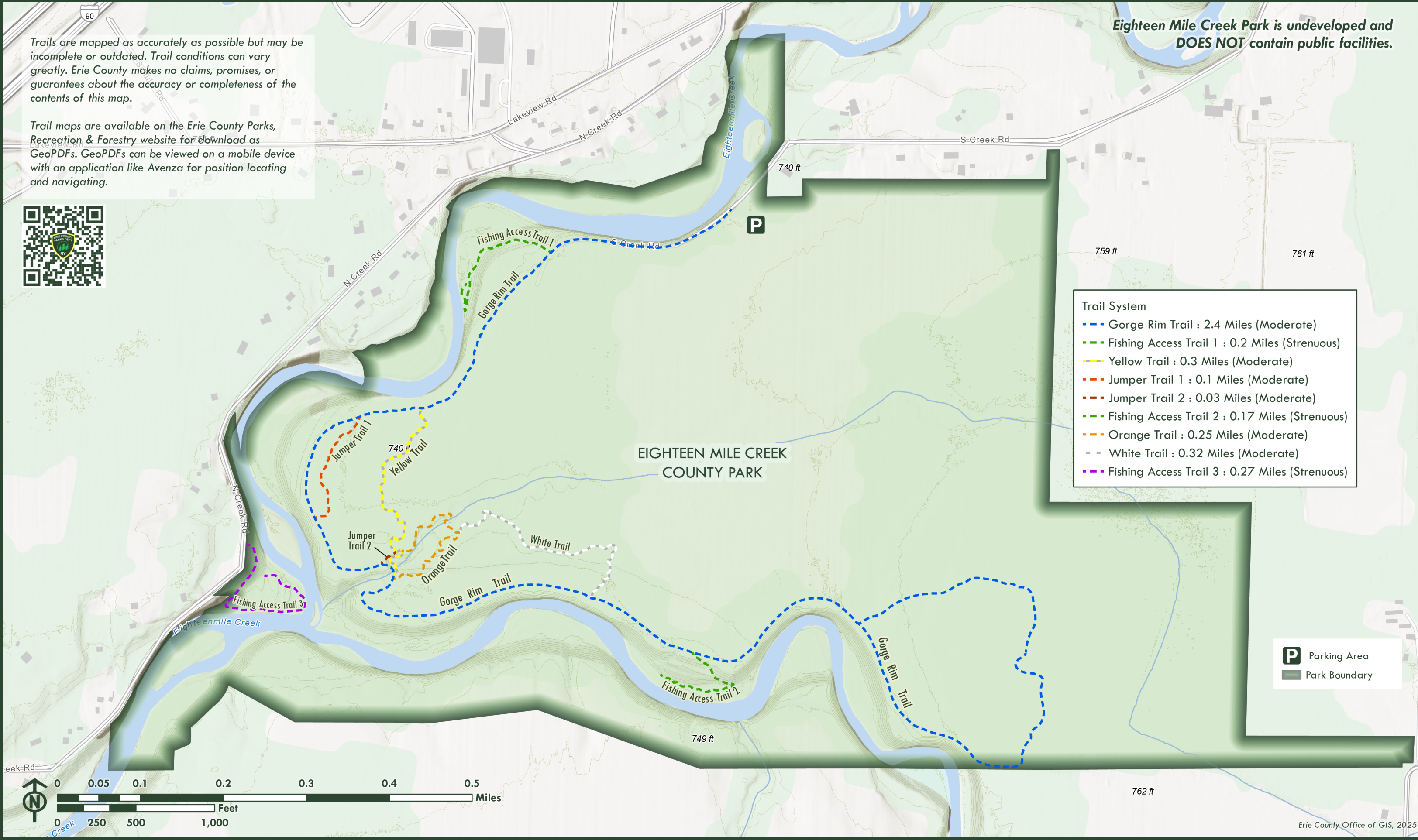


Trails are mapped as accurately as possible but may be incomplete or outdated. Trail conditions can vary greatly. Erie County makes no claims, promises, or guarantees about the accuracy or completeness of the contents of this map.

Trail maps are available on the Erie County Parks, Recreation & Forestry website for download as GeoPDFs. GeoPDFs can be viewed on a mobile device with an application like Avenza for position locating and navigating.



***Eighteen Mile Creek Park is undeveloped and DOES NOT contain public facilities.***



- Trail System**
- Gorge Rim Trail : 2.4 Miles (Moderate)
  - Fishing Access Trail 1 : 0.2 Miles (Strenuous)
  - Yellow Trail : 0.3 Miles (Moderate)
  - Jumper Trail 1 : 0.1 Miles (Moderate)
  - Jumper Trail 2 : 0.03 Miles (Moderate)
  - Fishing Access Trail 2 : 0.17 Miles (Strenuous)
  - Orange Trail : 0.25 Miles (Moderate)
  - White Trail : 0.32 Miles (Moderate)
  - Fishing Access Trail 3 : 0.27 Miles (Strenuous)

- P** Parking Area  
**█** Park Boundary

