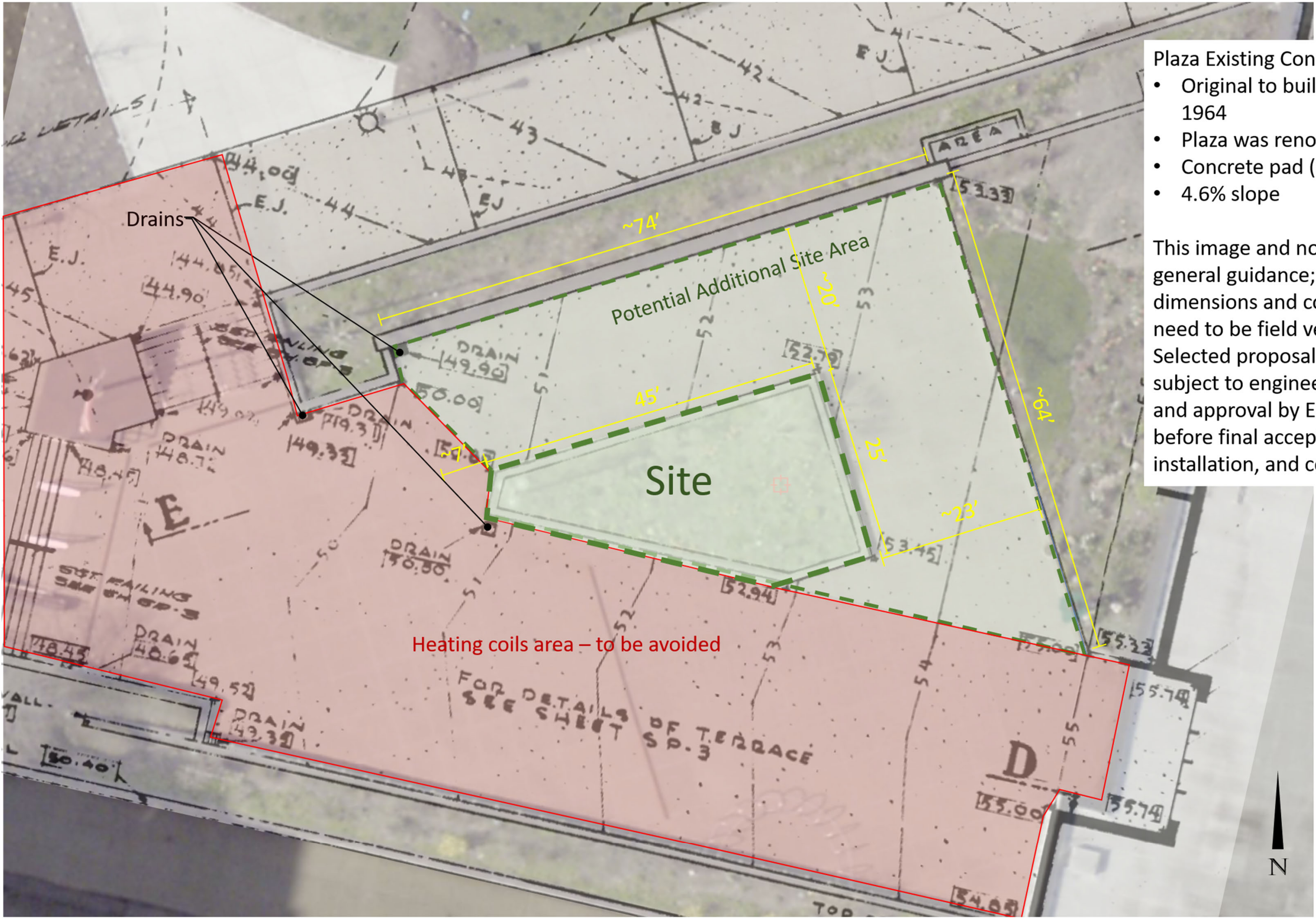


RFP2022-023VP: ARTISTIC CONCEPT AND REPRESENTATIONAL STATUES OF TRAILBLAZING WOMEN OF WNY

Addendum: Site Illustration



Plaza Existing Conditions:

- Original to building circa 1964
- Plaza was renovated in 2003
- Concrete pad (6" thick)
- 4.6% slope

This image and notations are for general guidance; exact dimensions and conditions will need to be field verified. Selected proposal will be subject to engineering review and approval by Erie County before final acceptance, installation, and construction.