

APPENDIX A
SIGN LOCATION PLANS



AKRON FALLS PARK

OVERALL SIGN LOCATION PLAN

ERIE COUNTY PARKS - WAYFINDING AND SIGNAGE PLAN

LEGEND:

Park Boundary

Existing Park Trails

Playground

WPA Pump Shelters/ Misc. Features

Comfort Station

Shelter

Warming Shelter

SIGN LOCATION TYPES

 IDENTIFICATION SIGNAGE DIRECTIONAL SIGNAGE ORIENTATION SIGNAGE INFORMATIONAL/REGULATORY

(P) Proposed New Sign Or (E) Existing Sign To Be Removed And Replaced

Message Schedule:
(XX) Park Name Abbreviation and (#) Sign Number

XX-#
X-#

Sign Identification

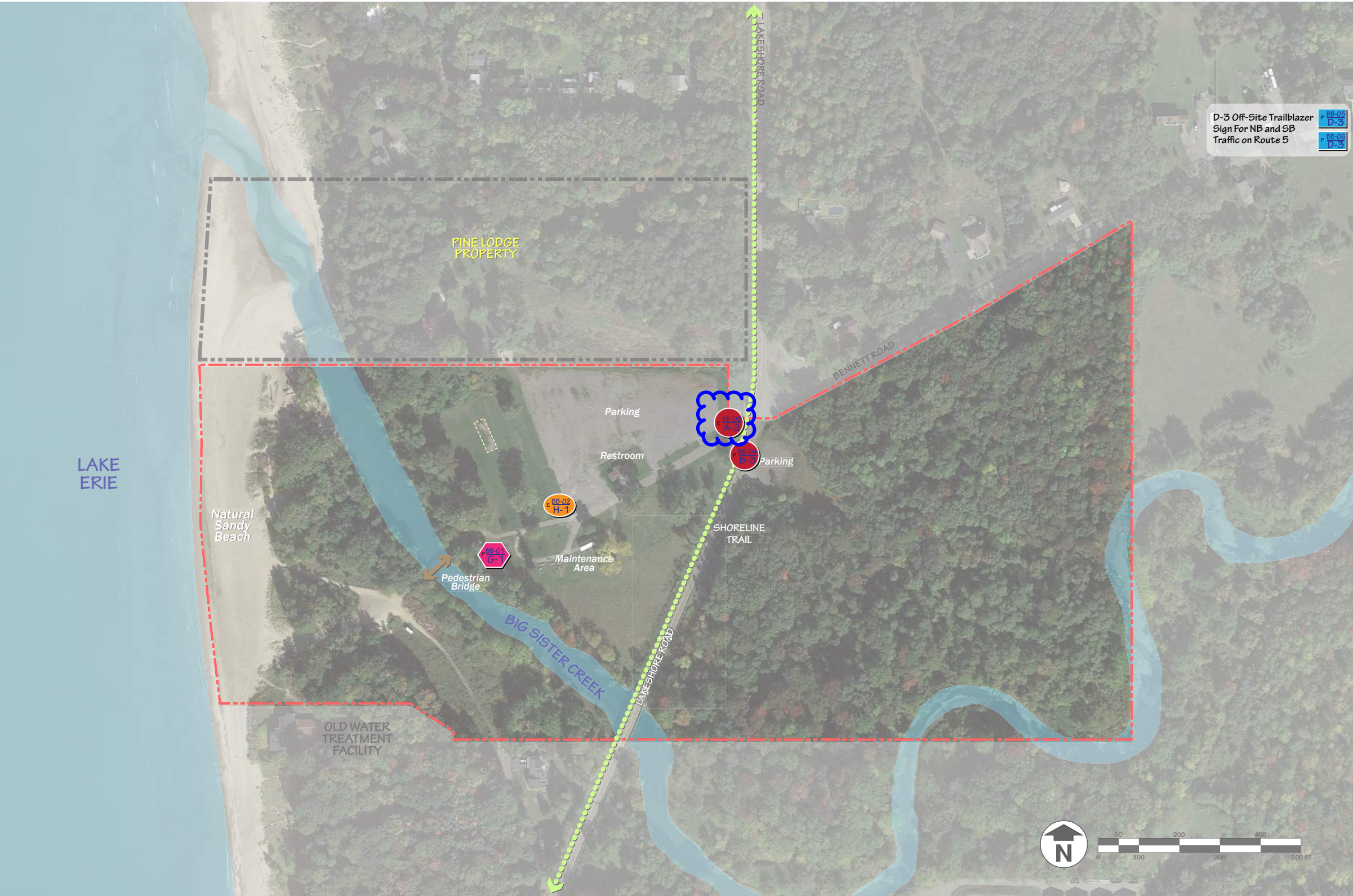
 Phase 2 Sign Locations



BENNETT BEACH PARK

OVERALL SIGN LOCATION PLAN

ERIE COUNTY PARKS - WAYFINDING AND SIGNAGE PLAN



LEGEND:

- Playground
- Shoreline Trail
- Park Boundary

SIGN LOCATION TYPES

- IDENTIFICATION SIGNAGE
- DIRECTIONAL SIGNAGE
- ORIENTATION SIGNAGE
- INFORMATIONAL/REGULATORY

P - Proposed New Sign
E - Existing Sign To Be Removed And Replaced

Message Schedule:
(XX) Park Name Abbreviation and (#) Sign Number

Sign Identification

Phase 2 Sign Locations



BLACK ROCK CANAL PARK

OVERALL SIGN LOCATION PLAN

ERIE COUNTY PARKS - WAYFINDING AND SIGNAGE PLAN



LEGEND:

- Riverwalk/Shorline Trail
- Park Boundary

SIGN LOCATION TYPES

- IDENTIFICATION SIGNAGE
- DIRECTIONAL SIGNAGE
- ORIENTATION SIGNAGE
- INFORMATIONAL/REGULATORY

P - Proposed New Sign
E - Existing Sign To Be Removed And Replaced

Message Schedule:
(XX) Park Name
Abbreviation and (#)
Sign Number

Sign Identification

Phase 2 Sign Locations



COMO LAKE PARK

OVERALL SIGN LOCATION PLAN

ERIE COUNTY PARKS - WAYFINDING AND SIGNAGE PLAN

LEGEND:

Park Boundary

Existing Park Trails

Playground

WPA Pump Shelters/ Misc. Features

Comfort Station

Shelter

Warming Shelter

SIGN LOCATION TYPES

 IDENTIFICATION SIGNAGE DIRECTIONAL SIGNAGE ORIENTATION SIGNAGE INFORMATIONAL/REGULATORY

P - Proposed New Sign

E - Existing Sign To Be Removed And Replaced

Message Schedule:
(XX) Park Name
Abbreviation and (#)
Sign Number

X

XX-#

X-#

Sign Identification

Phase 2 Sign Locations



ELLICOTT CREEK PARK

OVERALL SIGN LOCATION PLAN

ERIE COUNTY PARKS - WAYFINDING AND SIGNAGE PLAN

LEGEND:

Park Boundary

Existing Park Trails

Playground

WPA Pump Shelters/ Misc. Features

Comfort Station Shelter

Warming Shelter

SIGN LOCATION TYPES

IDENTIFICATION SIGNAGE

DIRECTIONAL SIGNAGE

ORIENTATION SIGNAGE

INFORMATIONAL/REGULATORY

P - Proposed New Sign

E - Existing Sign To Be Removed And Replaced

N - New Sign Completed in Previous Phase

Message Schedule:
(XX) Park Name Abbreviation and (#)
Sign Number

X

XX-#

X-#

Sign Identification

Phase 2 Sign Locations



ELLICOTT CREEK PARK

(ELLICOTT ISLAND)

OVERALL SIGN LOCATION PLAN

ERIE COUNTY PARKS - WAYFINDING AND SIGNAGE PLAN

LEGEND:

- Park Boundary
- ... Existing Park Trails
- Playground
- WPA Pump Shelters/ Misc. Features
- Comfort Station
- Shelter
- Warming Shelter

SIGN LOCATION TYPES

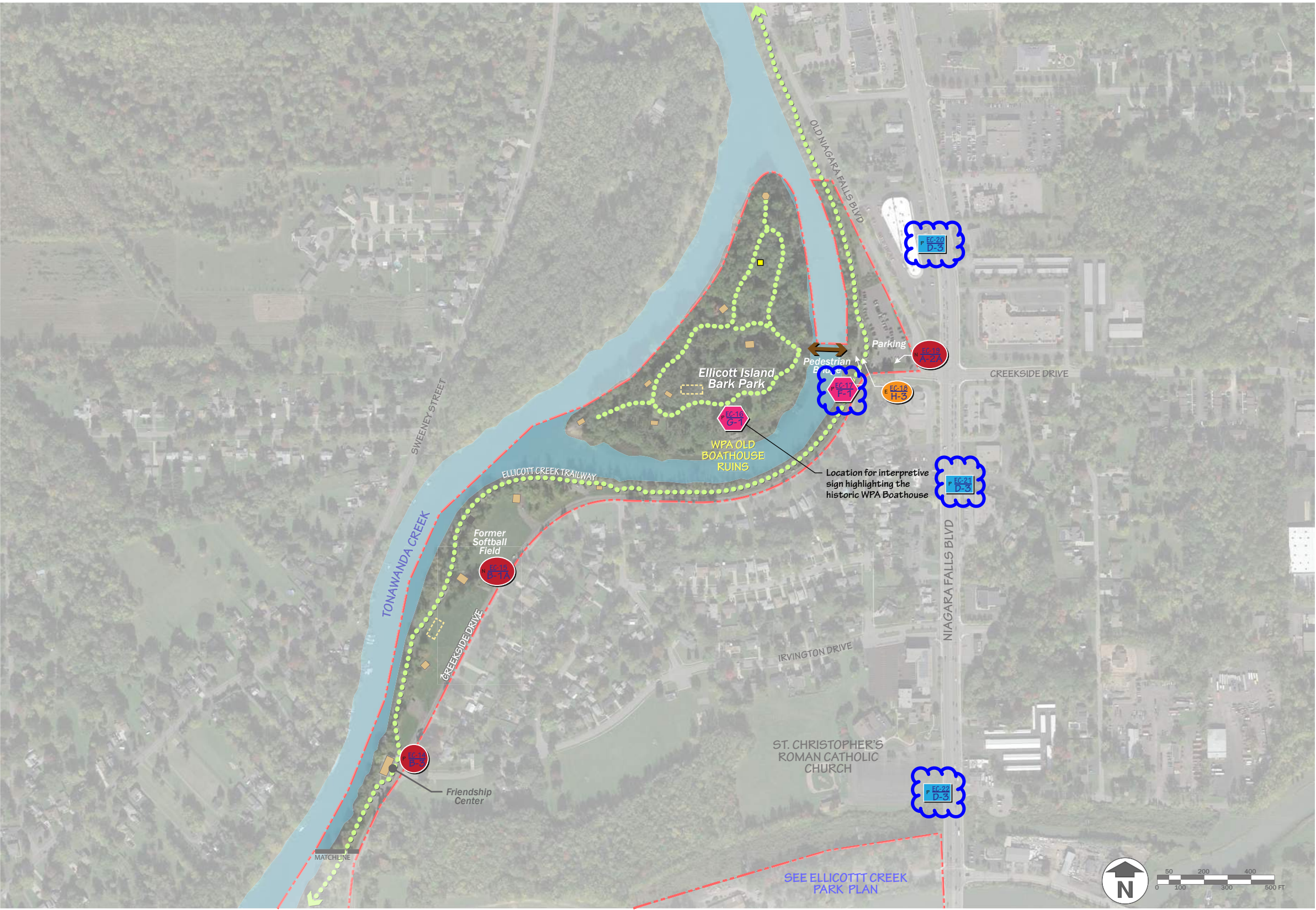
- IDENTIFICATION SIGNAGE
- DIRECTIONAL SIGNAGE
- ORIENTATION SIGNAGE
- INFORMATIONAL/REGULATORY

P - Proposed New Sign
E - Existing Sign To Be Removed And Replaced
N - New Sign Completed in Previous Phase

Message Schedule:
(XX) Park Name Abbreviation and (#) Sign Number

Sign Identification

Phase 2 Sign Locations





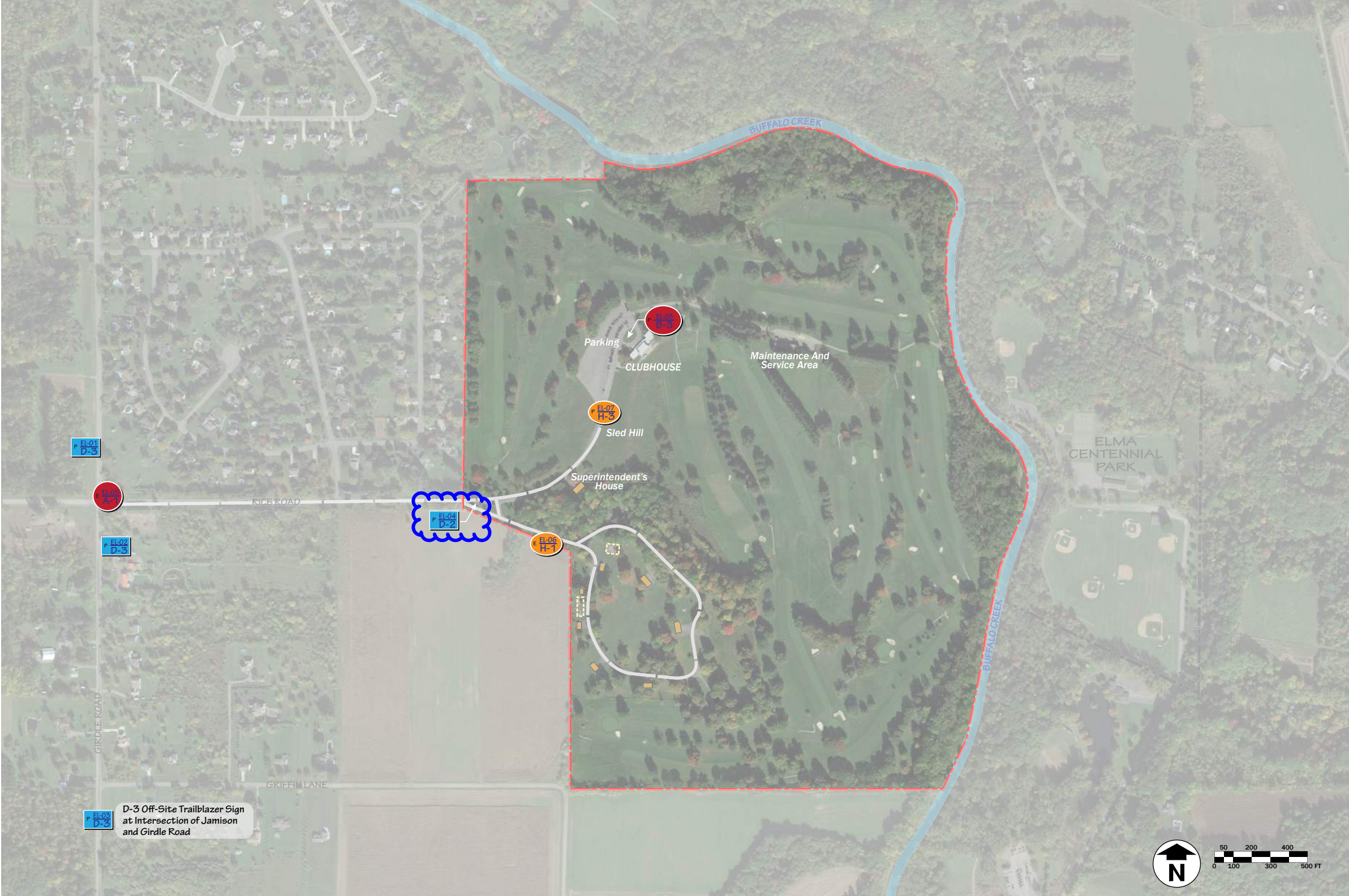
ELMA MEADOWS PARK

OVERALL SIGN LOCATION PLAN

ERIE COUNTY PARKS - WAYFINDING AND SIGNAGE PLAN

LEGEND:

Playground

Park Boundary

SIGN LOCATION TYPES

IDENTIFICATION SIGNAGE

DIRECTIONAL SIGNAGE

ORIENTATION SIGNAGE

INFORMATIONAL/REGULATORY

P - Proposed New Sign

E - Existing Sign To Be Removed And Replaced

Message Schedule:
(XX) Park Name
Abbreviation and (#)
Sign Number

Sign Identification

X

XX-#

X-#

Phase 2 Sign Locations



GROVER CLEVELAND GOLF COURSE OVERALL SIGN LOCATION PLAN

ERIE COUNTY PARKS - WAYFINDING AND SIGNAGE PLAN



LEGEND:

- Existing Trails
- Park Boundary

SIGN LOCATION TYPES

IDENTIFICATION SIGNAGE

DIRECTIONAL SIGNAGE

ORIENTATION SIGNAGE

INFORMATIONAL/REGULATORY

P - Proposed New Sign
E - Existing Sign To Be Removed And Replaced

Message Schedule:
(XX) Park Name Abbreviation and (#) Sign Number

Sign Identification

Phase 2 Sign Locations



ISLE VIEW PARK

OVERALL SIGN LOCATION PLAN

ERIE COUNTY PARKS - WAYFINDING AND SIGNAGE PLAN

LEGEND:

Playground

Existing Trails

Overlooks

Park Boundary

SIGN LOCATION TYPES

- IDENTIFICATION SIGNAGE
- DIRECTIONAL SIGNAGE
- ORIENTATION SIGNAGE
- INFORMATIONAL/REGULATORY

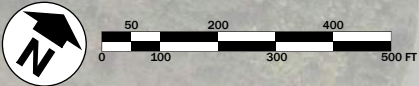
P - Proposed New Sign

E - Existing Sign To Be Removed And Replaced

Message Schedule:
(XX) Park Name
Abbreviation and (#)
Sign Number

Sign Identification

Phase 2 Sign Locations





SPRAGUE BROOK PARK

OVERALL SIGN LOCATION PLAN

ERIE COUNTY PARKS - WAYFINDING AND SIGNAGE PLAN

LEGEND:

Park Boundary

Existing Park Trails

Playground

WPA Pump Shelters/ Misc. Features

Comfort Station

Shelter

Warming Shelter

SIGN LOCATION TYPES

IDENTIFICATION SIGNAGE

DIRECTIONAL SIGNAGE

ORIENTATION SIGNAGE

INFORMATIONAL/REGULATORY

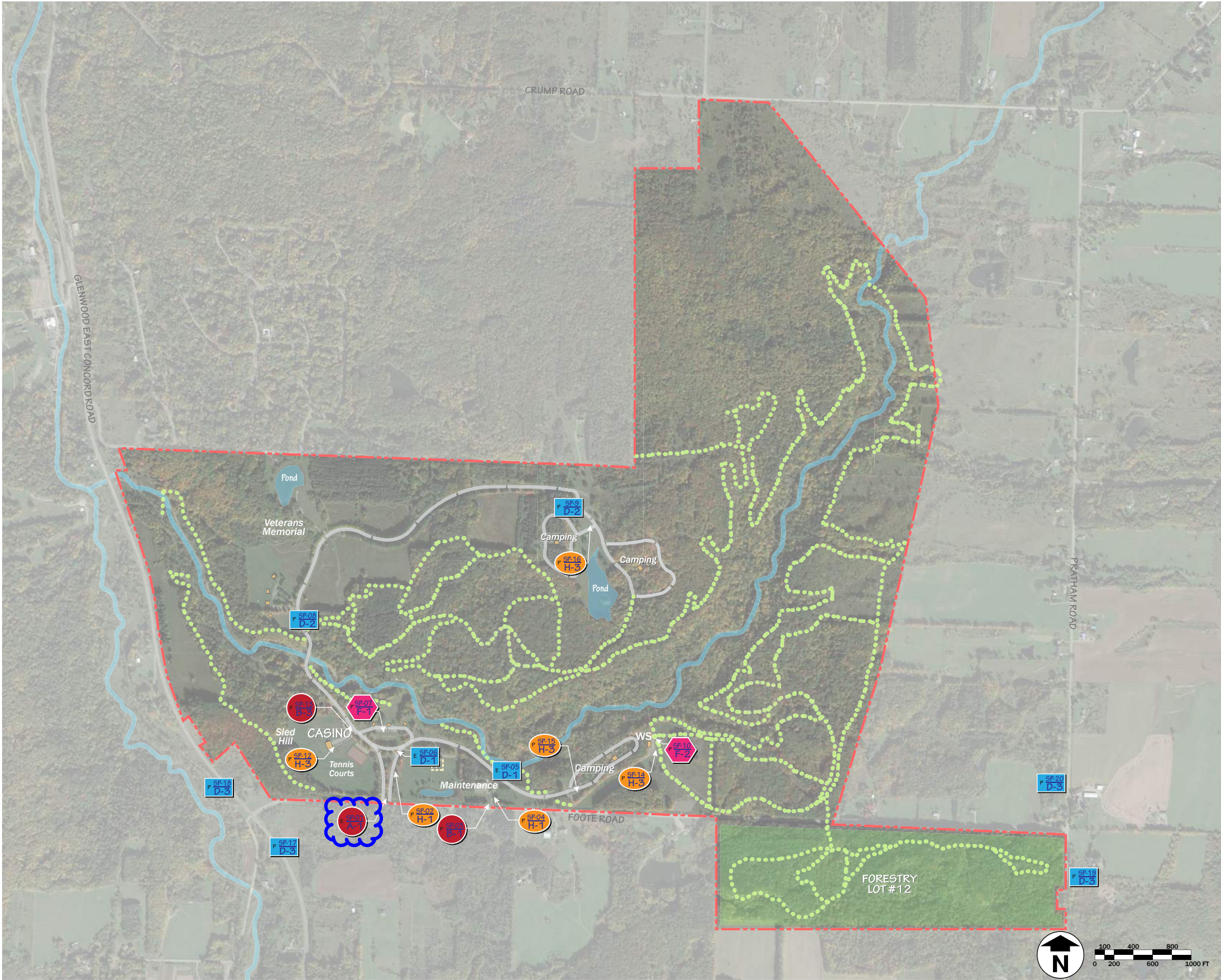
P - Proposed New Sign

E - Existing Sign To Be Removed And Replaced

Message Schedule:
(XX) Park Name
Abbreviation and (#)
Sign Number

Sign Identification

Phase 2 Sign Locations





THOMAS F. HIGGINS RIVERFRONT PARK OVERALL SIGN LOCATION PLAN

ERIE COUNTY PARKS - WAYFINDING AND SIGNAGE PLAN



LEGEND:

--- Park Boundary

SIGN LOCATION TYPES

- IDENTIFICATION SIGNAGE
- DIRECTIONAL SIGNAGE
- ORIENTATION SIGNAGE
- INFORMATIONAL/REGULATORY

P - Proposed New Sign
E - Existing Sign To Be Removed And Replaced

Message Schedule:
(XX) Park Name Abbreviation and (#) Sign Number

Sign Identification

Phase 2 Sign Locations



TOW PATH PARK

OVERALL SIGN LOCATION PLAN

ERIE COUNTY PARKS - WAYFINDING AND SIGNAGE PLAN

LEGEND:

Park Boundary

Existing Park Trails



SIGN LOCATION TYPES

- IDENTIFICATION SIGNAGE
- DIRECTIONAL SIGNAGE
- ORIENTATION SIGNAGE
- INFORMATIONAL/REGULATORY

(P) Proposed New Sign Or (E) Existing Sign To Be Removed And Replaced

Message Schedule:
(XX) Park Name Abbreviation and (#) Sign Number

Sign Identification

Phase 2 Sign Locations



WENDT BEACH PARK

OVERALL SIGN LOCATION PLAN

ERIE COUNTY PARKS - WAYFINDING AND SIGNAGE PLAN

LEGEND:

Playground

Shoreline Trail

SIGN LOCATION TYPES

IDENTIFICATION SIGNAGE

DIRECTIONAL SIGNAGE

ORIENTATION SIGNAGE

INFORMATIONAL/REGULATORY

P - Proposed New Sign
E - Existing Sign To Be
Removed And
Replaced

Message Schedule:
(XX) Park Name
Abbreviation and (#)
Sign Number

X

XX-#
X-#

Sign Identification

Phase 2 Sign Locations

ERIE COUNTY DEPARTMENT OF PARKS, RECREATION AND FORESTRY

SIGNAGE AND WAYFINDING IMPLEMENTATION

PHASE 2

SIGN LOCATION PLANS

JANUARY 2025



DRAWING INDEX	
PAGE NUMBERS	PARK NAME (PARK ID) - SIGN NUMBER ID
PG 1-6	AKRON FALLS (AF) - 11, 12, 13, 14, 17
PG 7	BENNETT BEACH (BB) - 03
PG 8-9	BLACK ROCK (BR) - 03, 04
PG 10-15	COMO LAKE (CL) - 08, 09, 12, 16, 20
PG 16-26	ELLCOTT CREEK (EC) - 01, 04, 05, 08, 13, 17, 20, 21, 22
PG 27	ELMA MEADOWS (EL) - 04
PG 28-29	GROVER CLEVELAND (GC) - 01, 02
PG 30-31	ISLE VIEW (IV) - 03, 05
PG 32	SPRAGUE BROOK (SP) - 01,
PG 33	THOMAS HIGGINS (TH) - 03
PG 34-36	TOW PATH (TP) - 01, 04, 05
PG 37	WENDT BEACH (WB) - 04

Centerpointe Corporate Park
375 Essjay Road, Suite 200
Williamsville, NY 14221
www.wendelcompanies.com


p:716.688.0766 f:716.625.68





LOCATION:	Parkview Drive
ID #:	AF-11
SIGN TYPE:	D-1
GPS COORDINATES:	Latitude: 43.015362* Longitude: -78.495432*
REMARKS:	Sign to be oriented perpendicular to Parkview Drive.

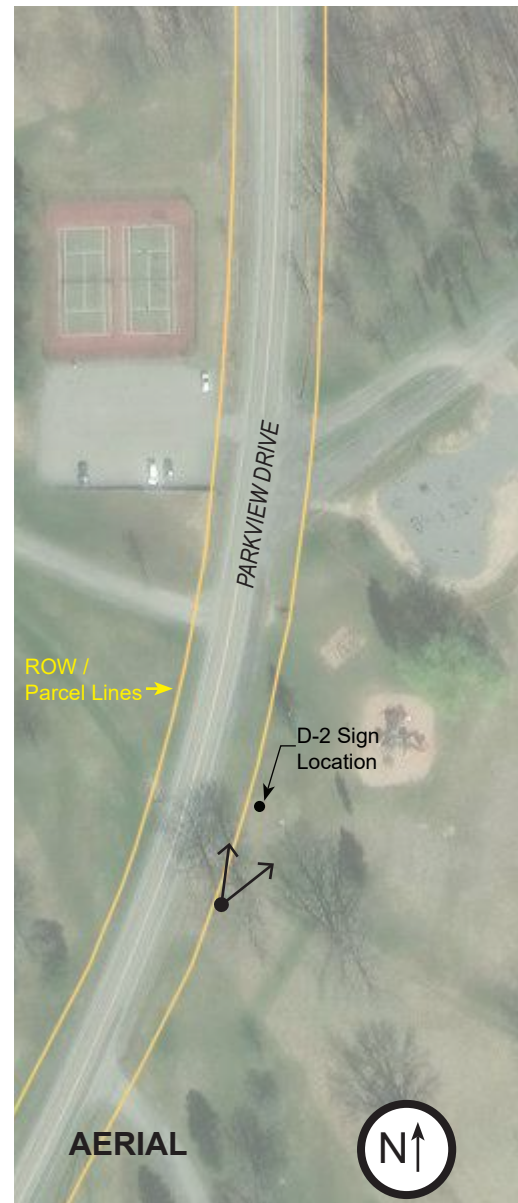
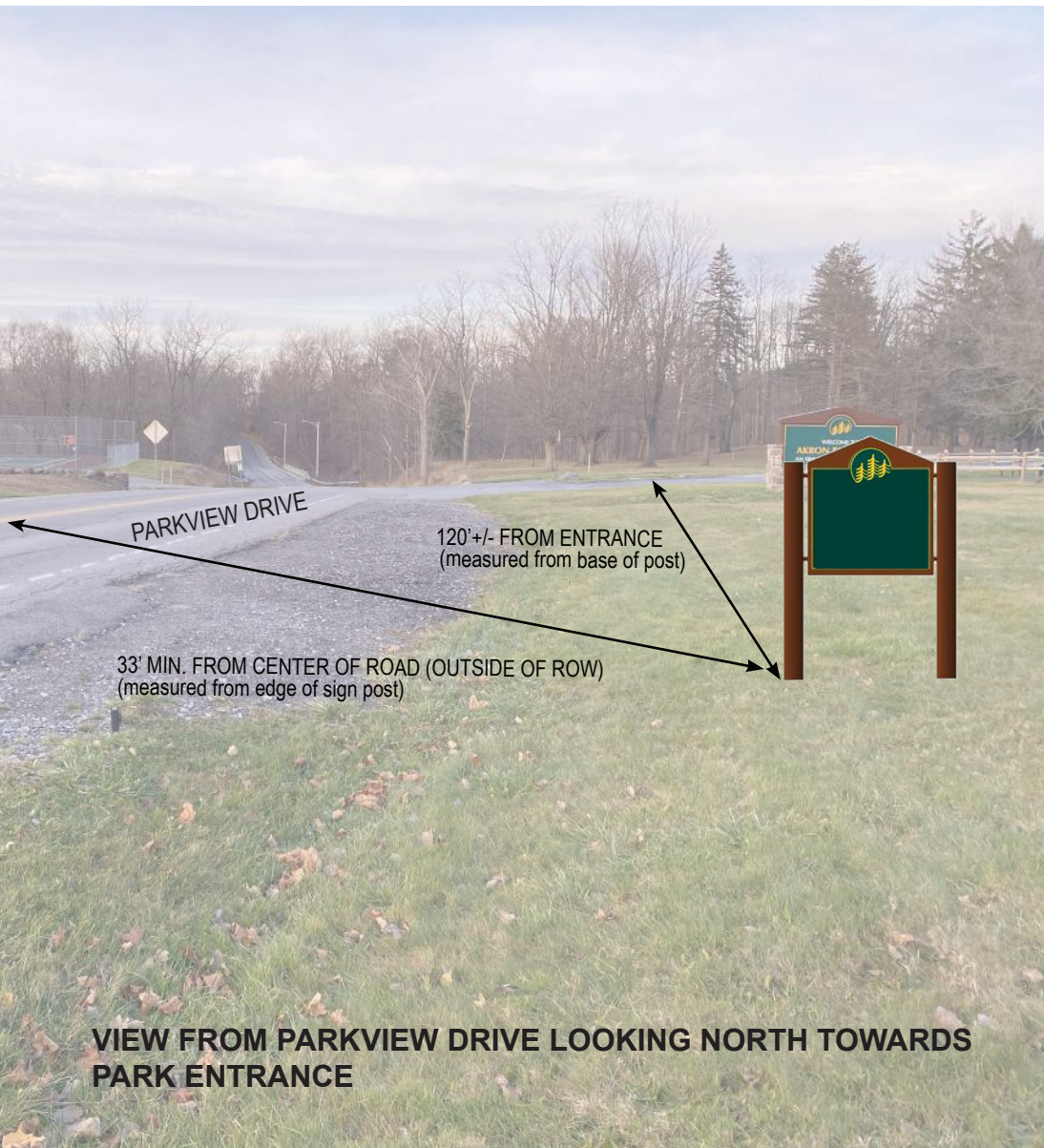
Aerial Notes:
Aerial image taken from Erie County GIS: ROW / parcel lines to be verified in the field

 Viewpoint Icon

Aerial Not to Scale

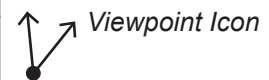
SIGN LOCATED WITHIN PARK PROPERTY

Notes:
Refer to Phase 2 Signage Message Schedule for specific signage content
Refer to Overall Signage Location Plans for general location of sign
*Denotes approximate GPS coordinates of sign location - location to be verified in the field prior to installation



LOCATION:	Parkview Drive northbound
ID #:	AF-12
SIGN TYPE:	D-2
GPS COORDINATES:	Latitude: 43.014040* Longitude: -78.495291*
REMARKS:	Sign to be oriented perpendicular to Parkview Drive.

Aerial Notes:
Aerial image taken from Erie County GIS: ROW / parcel lines to be verified in the field



Aerial Not to Scale

SIGN LOCATED WITHIN PARK PROPERTY

Notes:

Refer to Phase 2 Signage Message Schedule for specific signage content

Refer to Overall Signage Location Plans for general location of sign

*Denotes approximate GPS coordinates of sign location - location to be verified in the field prior to installation



LOCATION:	South side of Park Road
ID #:	AF-13
SIGN TYPE:	D-1
GPS COORDINATES:	Latitude: 43.015110* Longitude: -78.492263*
REMARKS:	Sign to be oriented perpendicular to Park Road.

SIGN IS LOCATED WITHIN PARK PROPERTY.

Notes:

Refer to Phase 2 Signage Message Schedule for specific signage content

Refer to Overall Signage Location Plans for general location of sign

*Denotes approximate GPS coordinates of sign location - location to be verified in the field prior to installation



LOCATION:	North side of Park Road
ID #:	AF-14
SIGN TYPE:	D-1
GPS COORDINATES:	Latitude: 43.014476* Longitude: -78.491511*
REMARKS:	Sign to be perpendicular to Park Road.

SIGN IS LOCATED WITHIN PARK PROPERTY

Notes:

Refer to Phase 2 Signage Message Schedule for specific signage content

Refer to Overall Signage Location Plans for general location of sign

*Denotes approximate GPS coordinates of sign location - location to be verified in the field prior to installation



LOCATION:	North side of Park Road - adjacent to trail from Akron Falls parking lot
ID #:	AF-17
SIGN TYPE:	F-1
GPS COORDINATES:	Latitude: 43.015228* Longitude: -78.485245*
REMARKS:	Sign to be perpendicular to trail

SIGN IS LOCATED WITHIN PARK PROPERTY

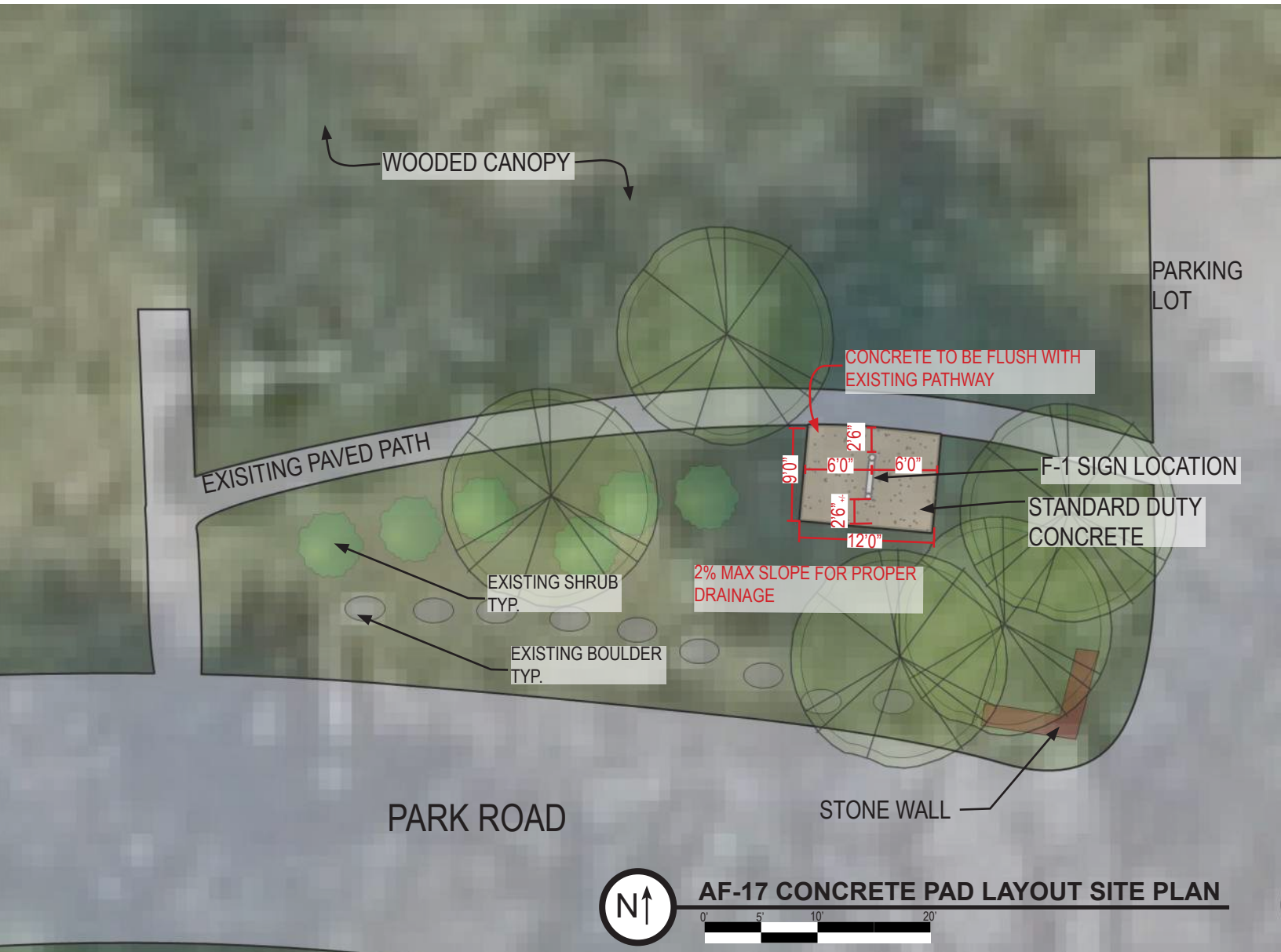
Notes:

Refer to Phase 2 Signage Message Schedule for specific signage content

Refer to Overall Signage Location Plans for general location of sign

*Denotes approximate GPS coordinates of sign location - location to be verified in the field prior to installation

AKRON FALLS PARK CONCRETE PAD LAYOUT: AF-17



LOCATION:	North side of Park Road - adjacent to trail from Akron Falls parking lot
ID #:	AF-17
SIGN TYPE:	F-1
GPS COORDINATES:	Latitude: 43.015228* Longitude: -78.485245*
REMARKS:	Sign to be perpendicular to trail

SIGN IS LOCATED WITHIN PARK PROPERTY

Notes:

Refer to Phase 2 Signage Message Schedule for specific signage content

Refer to Overall Signage Location Plans for general location of sign

*Denotes approximate GPS coordinates of sign location - location to be verified in the field prior to installation



LOCATION:	Lake Shore Road and Bennett Beach Park Road
ID #:	BB-03
SIGN TYPE:	A-2
GPS COORDINATES:	Latitude: 42.659887* Longitude: -79.058343*
REMARKS:	Replace existing sign, maintain orientation towards Lake Shore rd. (Existing sign to be removed by Erie County prior to construction)

SIGN IS LOCATED WITHIN PARK PROPERTY

Notes:

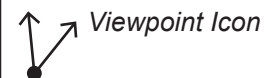
Refer to Phase 2 Signage Message Schedule for specific signage content

Refer to Overall Signage Location Plans for general location of sign

*Denotes approximate GPS coordinates of sign location - location to be verified in the field prior to installation

Aerial Notes:

Aerial image taken from Erie County GIS: ROW / parcel lines to be verified in the field



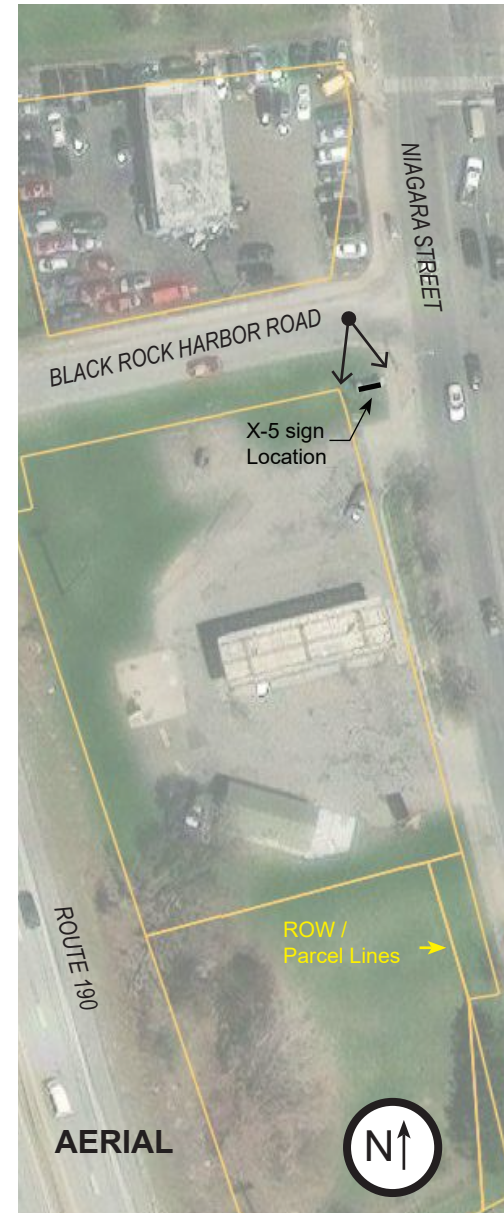
Aerial Not to Scale

BLACK ROCK CANAL PARK: BR-03



NIAGARA STREET

VIEW FROM BLACK ROCK HARBOR RD LOOKING SOUTH



BLACK ROCK HARBOR ROAD

NIAGARA STREET

X-5 sign
Location

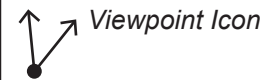
ROW /
Parcel Lines

AERIAL



LOCATION:	Black Rock Harbor Road and Niagara Street
ID #:	BR-03
SIGN TYPE:	X-5
GPS COORDINATES:	Latitude: 42.945113* Longitude: -78.907682*
REMARKS:	Replace existing panel with new panel, maintain same sign orientation perpendicular to Niagara St. Stone base to remain. (Existing sign to be removed by Erie County prior to construction)

Aerial Notes:
Aerial image taken from Erie County GIS: ROW / parcel lines to be verified in the field



Aerial Not to Scale

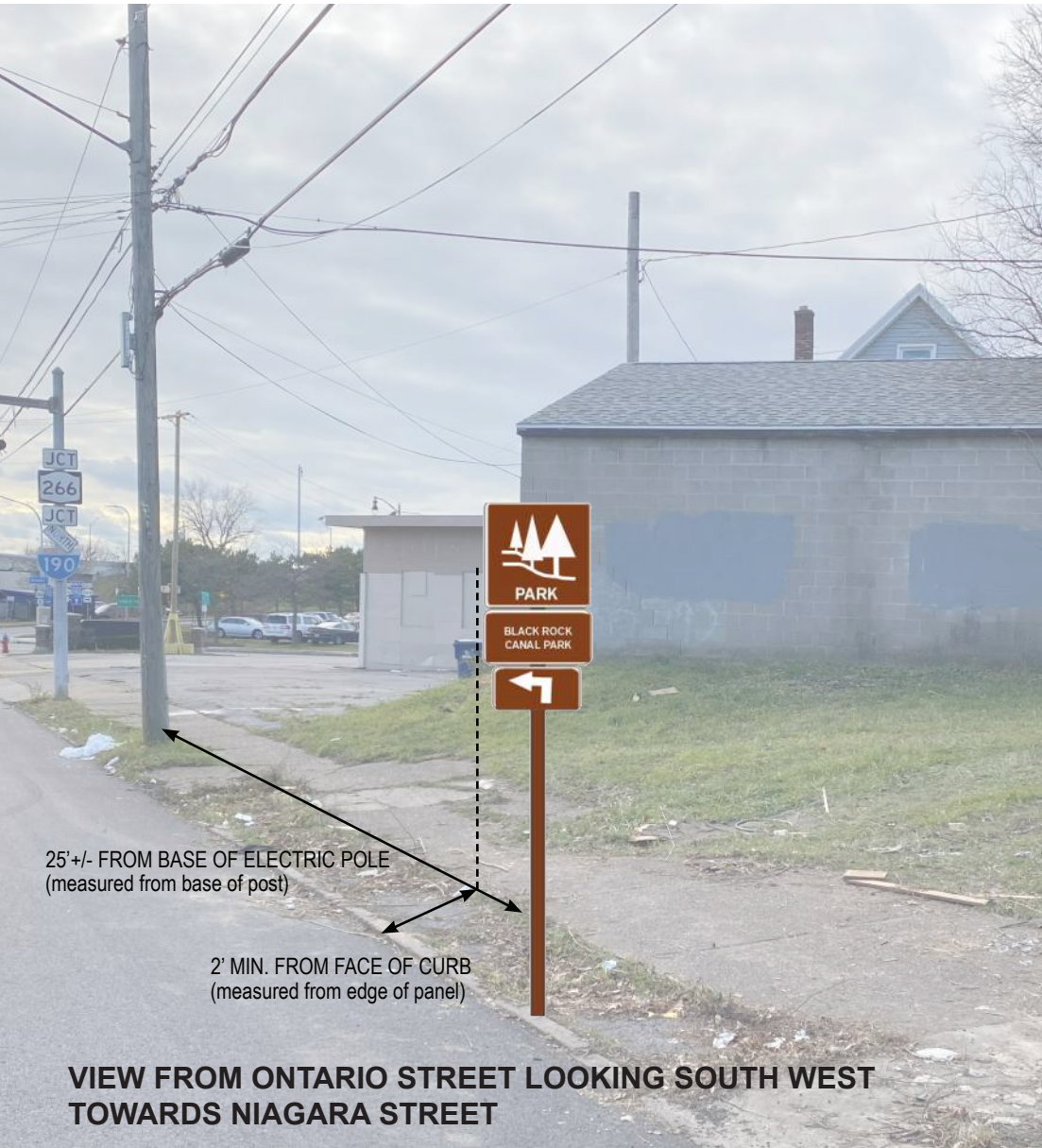
ROW OWNERSHIP: BLACK ROCK HARBOR RD IS CITY OF BUFFALO - OWNED.
NIAGARA ST IS NYSDOT OWNED.

Notes:

Refer to Phase 2 Signage Message Schedule for specific signage content


Refer to Overall Signage Location Plans for general location of sign

*Denotes approximate GPS coordinates of sign location - location to be verified in the field prior to installation



LOCATION:	Ontario Street
ID #:	BR-04
SIGN TYPE:	D-3
GPS COORDINATES:	Latitude: 42.946452* Longitude: -78.906979*
REMARKS:	Align with existing pole. Sign to be perpendicular to Ontario Street.

Aerial Notes:
Aerial image taken from Erie County GIS: ROW / parcel lines to be verified in the field

 Viewpoint Icon

Aerial Not to Scale

ROW OWNERSHIP: ONTARIO STREET IS CITY OF BUFFALO - OWNED.

Notes:
Refer to Phase 2 Signage Message Schedule for specific signage content
Refer to Overall Signage Location Plans for general location of sign
*Denotes approximate GPS coordinates of sign location - location to be verified in the field prior to installation



LOCATION:	East of Quincy & Como Park Blvd entry
ID #:	CL-08
SIGN TYPE:	D-1
GPS COORDINATES:	Latitude: 42.888902* Longitude: -78.663782*
REMARKS:	Do not block existing signs. Sign to be perpendicular to Quincy Ave.

SIGN IS LOCATED WITHIN PARK PROPERTY

Notes:
Refer to Phase 2 Signage Message Schedule for specific signage content
Refer to Overall Signage Location Plans for general location of sign
*Denotes approximate GPS coordinates of sign location - location to be verified in the field prior to installation

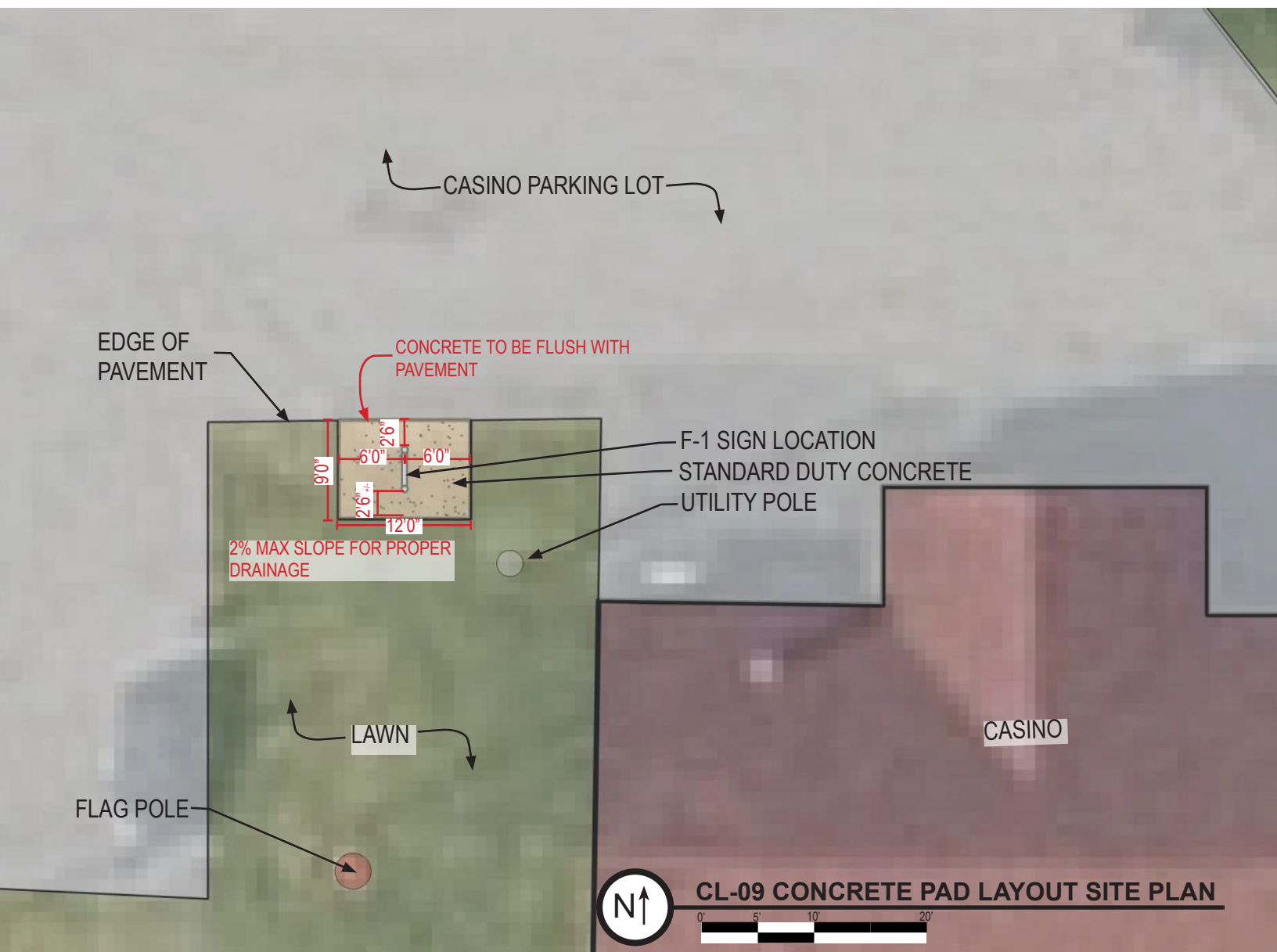


LOCATION:	Quincy Ave near Park Casino
ID #:	CL-09
SIGN TYPE:	F-1
GPS COORDINATES:	Latitude: 42.890593* Longitude: -78.658954*
REMARKS:	Sign to be oriented parallel to Casino entrance.

SIGN LOCATED WITHIN PARK PROPERTY

Notes:
Refer to Phase 2 Signage Message Schedule for specific signage content
Refer to Overall Signage Location Plans for general location of sign
*Denotes approximate GPS coordinates of sign location - location to be verified in the field prior to installation

COMO LAKE PARK CONCRETE PAD LAYOUT: CL-09



LOCATION:	Quincy Ave near Park Casino
ID #:	CL-09
SIGN TYPE:	F-1
GPS COORDINATES:	Latitude: 42.890593* Longitude: -78.658954*
REMARKS:	Sign to be oriented parallel to Casino entrance.

SIGN LOCATED WITHIN PARK PROPERTY

Notes:

Refer to Phase 2 Signage Message Schedule for specific signage content

Refer to Overall Signage Location Plans for general location of sign

*Denotes approximate GPS coordinates of sign location - location to be verified in the field prior to installation



LOCATION:	Quincy Ave south of ice rink parking lot.
ID #:	CL-12
SIGN TYPE:	D-1
GPS COORDINATES:	Latitude: 42.888992* Longitude: -78.65895*
REMARKS:	Sign to be perpendicular to Quincy Ave.

SIGN IS LOCATED WITHIN PARK PROPERTY

Notes:
 Refer to Phase 2 Signage Message Schedule for specific signage content
 Refer to Overall Signage Location Plans for general location of sign
 *Denotes approximate GPS coordinates of sign location - location to be verified in the field prior to installation



LOCATION:	Quincy Ave north of William Street park entry
ID #:	CL-16
SIGN TYPE:	D-1
GPS COORDINATES:	Latitude: 42.886791* Longitude: -78.657863*
REMARKS:	Sign to be perpendicular to Quincy Ave.

SIGN IS LOCATED WITHIN PARK PROPERTY

Notes:
Refer to Phase 2 Signage Message Schedule for specific signage content
Refer to Overall Signage Location Plans for general location of sign
*Denotes approximate GPS coordinates of sign location - location to be verified in the field prior to installation

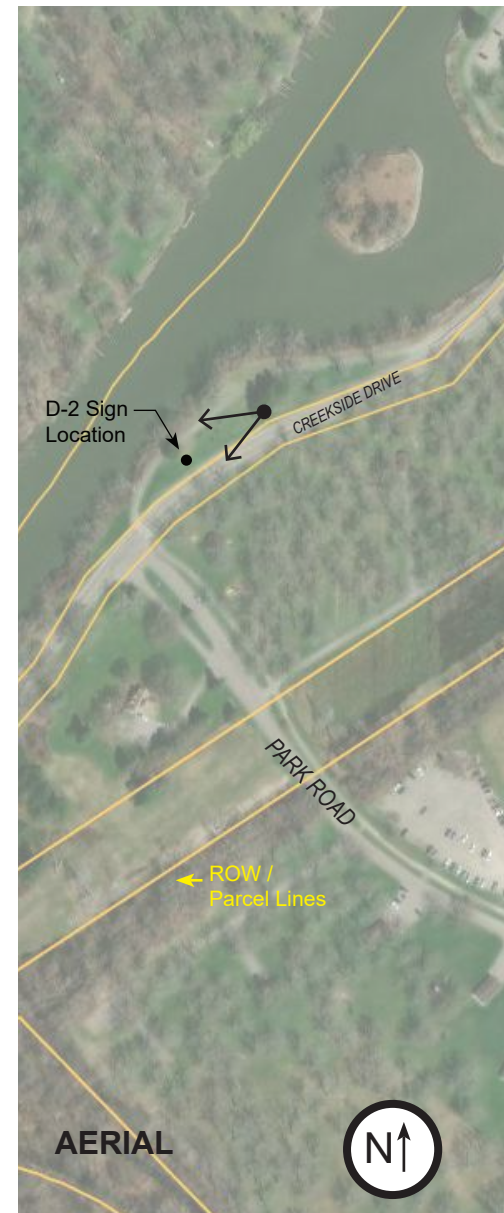
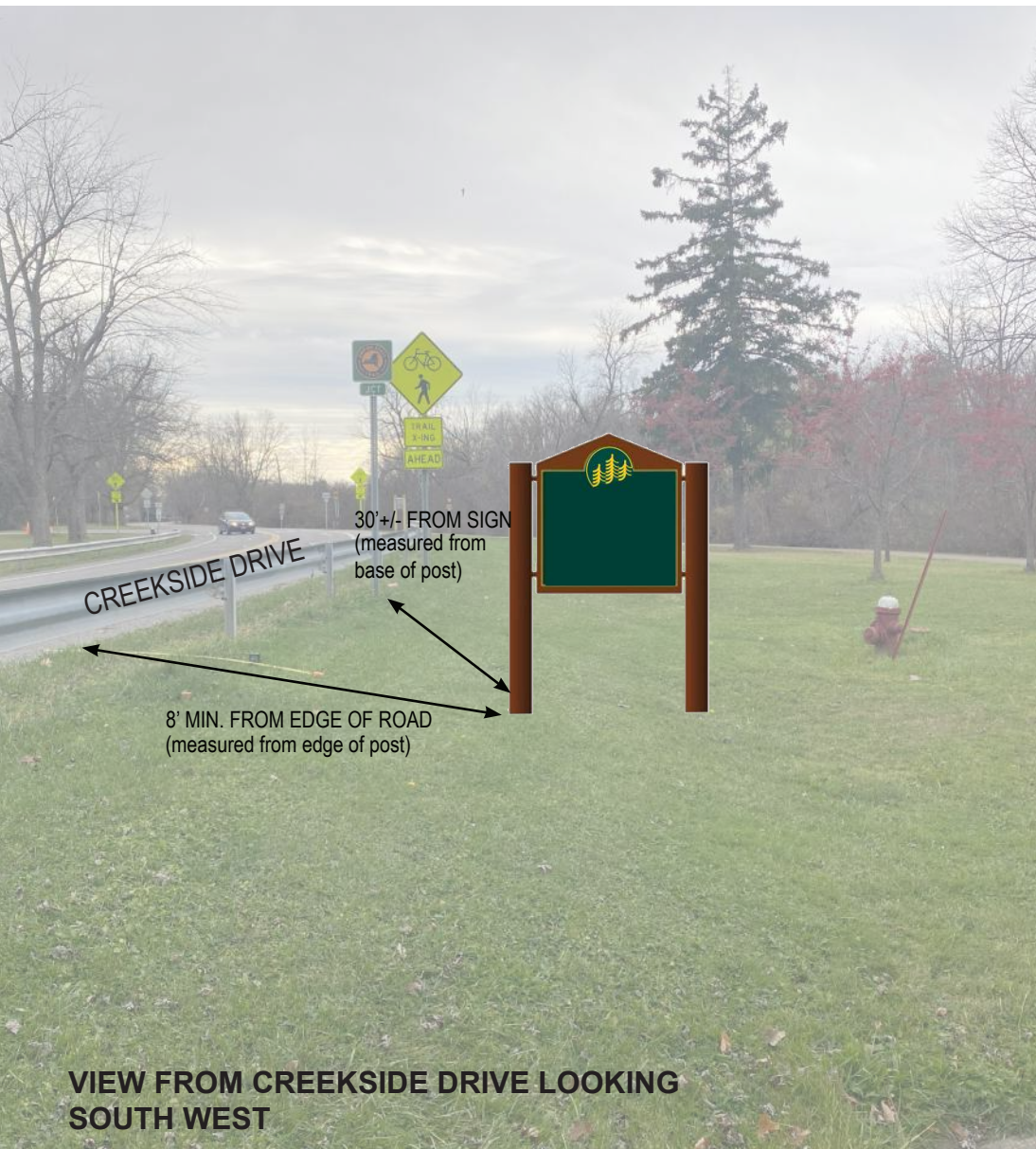


VIEW FROM QUINCY AVE LOOKING WEST

LOCATION:	Quincy Ave west of Bowen Road park entry
ID #:	CL-20
SIGN TYPE:	D-1
GPS COORDINATES:	Latitude: 42.887789* Longitude: -78.644376*
REMARKS:	Sign to be perpendicular to Quincy Ave.

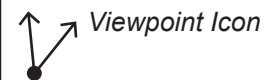
SIGN IS LOCATED WITHIN PARK PROPERTY

Notes:
Refer to Phase 2 Signage Message Schedule for specific signage content
Refer to Overall Signage Location Plans for general location of sign
*Denotes approximate GPS coordinates of sign location - location to be verified in the field prior to installation



LOCATION:	Creekside Drive and Park Road
ID #:	EC-01
SIGN TYPE:	D-2
GPS COORDINATES:	Latitude: 43.022918* Longitude: -78.834064*
REMARKS:	Sign to be perpendicular to Creekside Drive.

Aerial Notes:
Aerial image taken from Erie County GIS: ROW / parcel lines to be verified in the field



Aerial Not to Scale

LOCATED WITHIN PARK PROPERTY.

Notes:

Refer to Phase 2 Signage Message Schedule for specific signage content

Refer to Overall Signage Location Plans for general location of sign

*Denotes approximate GPS coordinates of sign location - location to be verified in the field prior to installation



LOCATION:	Park Road south west of soccer field
ID #:	EC-04
SIGN TYPE:	D-1
GPS COORDINATES:	Latitude: 43.020666* Longitude: -78.832843*
REMARKS:	Sign to be oriented perpendicular to Park Road.

SIGN IS LOCATED WITHIN PARK PROPERTY

Notes:

Refer to Phase 2 Signage Message Schedule for specific signage content

Refer to Overall Signage Location Plans for general location of sign

*Denotes approximate GPS coordinates of sign location - location to be verified in the field prior to installation



VIEW FROM PARK ROAD LOOKING SOUTH WEST

LOCATION:	Park Road south east of tennis courts.
ID #:	EC-05
SIGN TYPE:	D-2
GPS COORDINATES:	Latitude: 43.022755* Longitude: -78.827634*
REMARKS:	Sign to be oriented perpendicular to Park Road.

SIGN IS LOCATED WITHIN PARK PROPERTY

Notes:

Refer to Phase 2 Signage Message Schedule for specific signage content

Refer to Overall Signage Location Plans for general location of sign

*Denotes approximate GPS coordinates of sign location - location to be verified in the field prior to installation



VIEW FROM PARKING LOT LOOKING TOWARDS CASINO BUILDING

LOCATION:	Park Road north of Casino building
ID #:	EC-08
SIGN TYPE:	F-1
GPS COORDINATES:	Latitude: 43.022683* Longitude: -78.826115*
REMARKS:	Sign to be oriented perpendicular to Casino entry.

SIGN IS LOCATED WITHIN PARK PROPERTY

Notes:

Refer to Phase 2 Signage Message Schedule for specific signage content

Refer to Overall Signage Location Plans for general location of sign

*Denotes approximate GPS coordinates of sign location - location to be verified in the field prior to installation

ELLICOTT CREEK PARK CONCRETE PAD LAYOUT : EC-08



LOCATION:	Park Road north of Casino building
ID #:	EC-08
SIGN TYPE:	F-1
GPS COORDINATES:	Latitude: 43.022683* Longitude: -78.826115*
REMARKS:	Sign to be oriented perpendicular to Casino entry.

SIGN IS LOCATED WITHIN PARK PROPERTY

Notes:

Refer to Phase 2 Signage Message Schedule for specific signage content

Refer to Overall Signage Location Plans for general location of sign

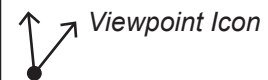
*Denotes approximate GPS coordinates of sign location - location to be verified in the field prior to installation



LOCATION:	S. Ellicott Creek Road & Niagara Falls Blvd.
ID #:	EC-13
SIGN TYPE:	D-3
GPS COORDINATES:	Latitude: 43.024443* Longitude: -78.821971*
REMARKS:	Sign to be oriented perpendicular to Niagara Falls Blvd.

Aerial Notes:

Aerial image taken from Erie County GIS: ROW / parcel lines to be verified in the field



Aerial Not to Scale

ROW OWNERSHIP: NIAGARA FALLS BLVD IS NYSDOT OWNED.

Notes:

Refer to Phase 2 Signage Message Schedule for specific signage content

Refer to Overall Signage Location Plans for general location of sign

*Denotes approximate GPS coordinates of sign location - location to be verified in the field prior to installation



LOCATION:	North of Creekside Dr. near Bark Park entry
ID #:	EC-17
SIGN TYPE:	F-1
GPS COORDINATES:	Latitude: 43.031294* Longitude: -78.823721*
REMARKS:	Sign to be oriented perpendicular to south walking path adjacent to Bark Park entry.

SIGN IS LOCATED WITHIN PARK PROPERTY

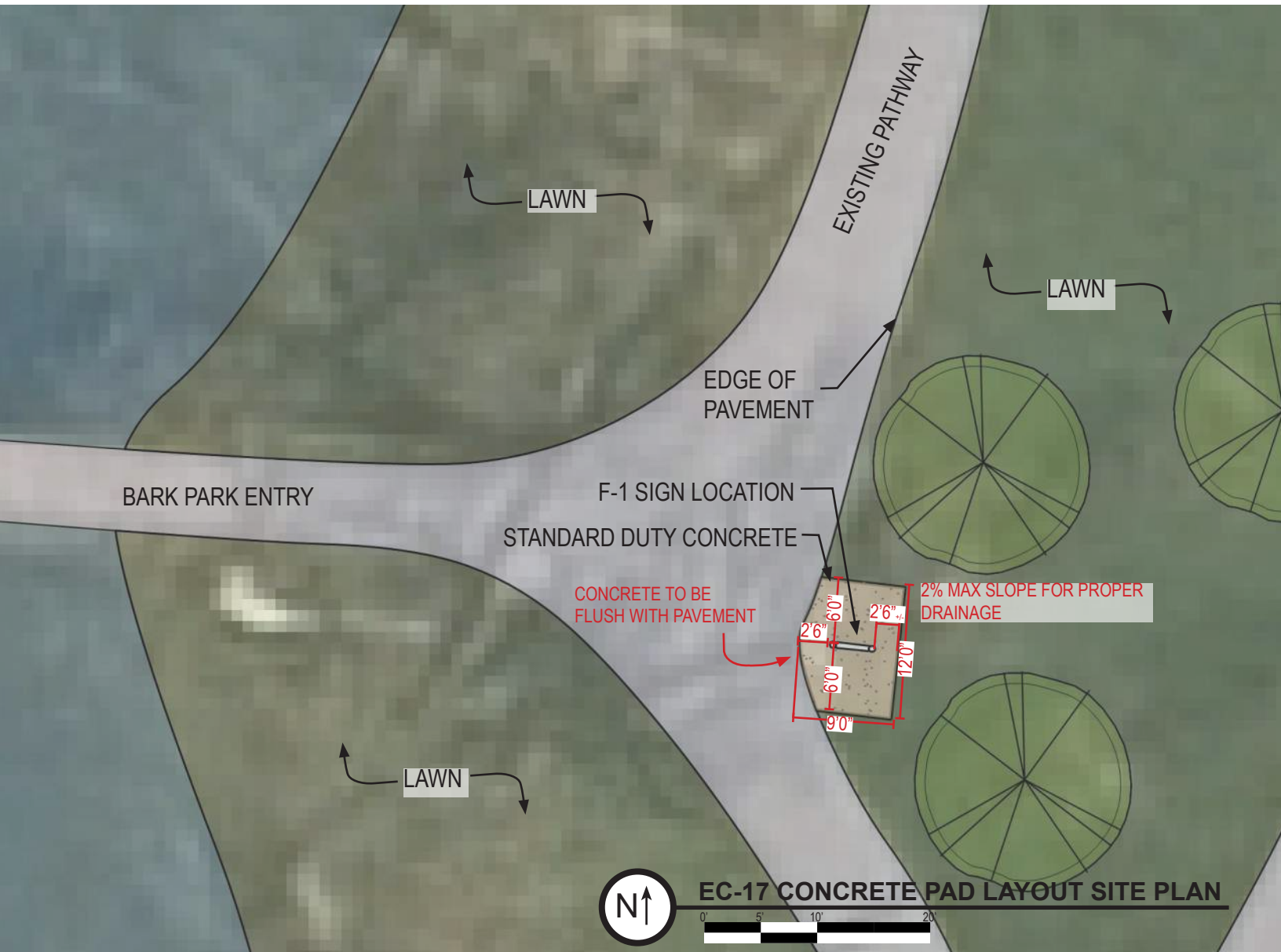
Notes:

Refer to Phase 2 Signage Message Schedule for specific signage content

Refer to Overall Signage Location Plans for general location of sign

*Denotes approximate GPS coordinates of sign location - location to be verified in the field prior to installation

ELLICOTT CREEK PARK CONCRETE PAD LAYOUT: EC-17



LOCATION:	North of Creekside Dr. near Bark Park entry
ID #:	EC-17
SIGN TYPE:	F-1
GPS COORDINATES:	Latitude: 43.031294* Longitude: -78.823721*
REMARKS:	Sign to be oriented perpendicular to south walking path adjacent to Bark Park entry.

SIGN IS LOCATED WITHIN PARK PROPERTY

Notes:

Refer to Phase 2 Signage Message Schedule for specific signage content

Refer to Overall Signage Location Plans for general location of sign

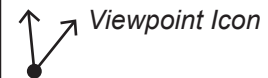
*Denotes approximate GPS coordinates of sign location - location to be verified in the field prior to installation



LOCATION:	Niagara Falls Blvd and Creekside Drive.
ID #:	EC-20
SIGN TYPE:	D-3
GPS COORDINATES:	Latitude: 43.031569* Longitude: -78.822337*
REMARKS:	Sign to be oriented perpendicular to Niagara Falls Blvd.

Aerial Notes:

Aerial image taken from Erie County GIS: ROW / parcel lines to be verified in the field



Aerial Not to Scale

ROW OWNERSHIP: NIAGARA FALLS BLVD IS NYSDOT OWNED.

Notes:

Refer to Phase 2 Signage Message Schedule for specific signage content

Refer to Overall Signage Location Plans for general location of sign

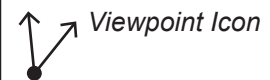
*Denotes approximate GPS coordinates of sign location - location to be verified in the field prior to installation



VIEW FROM NIAGARA FALLS BLVD LOOKING NORTH

LOCATION:	Niagara Falls Blvd and Hennepin rd.
ID #:	EC-21
SIGN TYPE:	D-3
GPS COORDINATES:	Latitude: 43.029476* Longitude: -78.822061*
REMARKS:	Sign to be oriented perpendicular to Niagara Falls Blvd.

Aerial Notes:
Aerial image taken from Erie County GIS: ROW / parcel lines to be verified in the field



Aerial Not to Scale

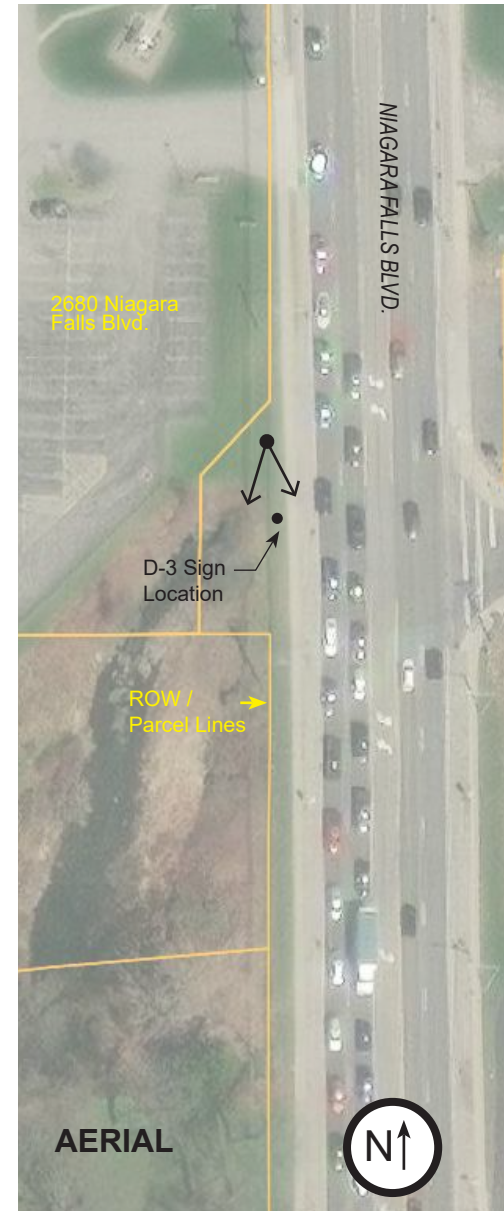
ROW OWNERSHIP: NIAGARA FALLS BLVD IS NYSDOT OWNED.

Notes:

Refer to Phase 2 Signage Message Schedule for specific signage content

Refer to Overall Signage Location Plans for general location of sign

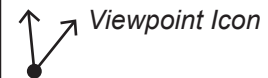
*Denotes approximate GPS coordinates of sign location - location to be verified in the field prior to installation



LOCATION:	Niagara Falls Blvd, Southbound
ID #:	EC-22
SIGN TYPE:	D-3
GPS COORDINATES:	Latitude: 43.026105* Longitude: -78.822295*
REMARKS:	Sign to be oriented perpendicular to Niagara Falls Blvd.

Aerial Notes:

Aerial image taken from Erie County GIS: ROW / parcel lines to be verified in the field



Aerial Not to Scale

ROW OWNERSHIP: NIAGARA FALLS BLVD IS NYSDOT OWNED

Notes:

Refer to Phase 2 Signage Message Schedule for specific signage content

Refer to Overall Signage Location Plans for general location of sign

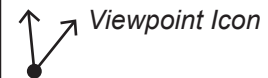
*Denotes approximate GPS coordinates of sign location - location to be verified in the field prior to installation



LOCATION:	Rice Road
ID #:	EL-04
SIGN TYPE:	D-2
GPS COORDINATES:	Latitude: 42.822473* Longitude: -78.598078*
REMARKS:	Sign to be oriented perpendicular to Rice Road. (Existing sign to be removed by Erie County prior to construction)

Aerial Notes:

Aerial image taken from Erie County GIS: ROW / parcel lines to be verified in the field



Aerial Not to Scale

SIGN IS LOCATED WITHIN PARK PROPERTY

Notes:

Refer to Phase 2 Signage Message Schedule for specific signage content

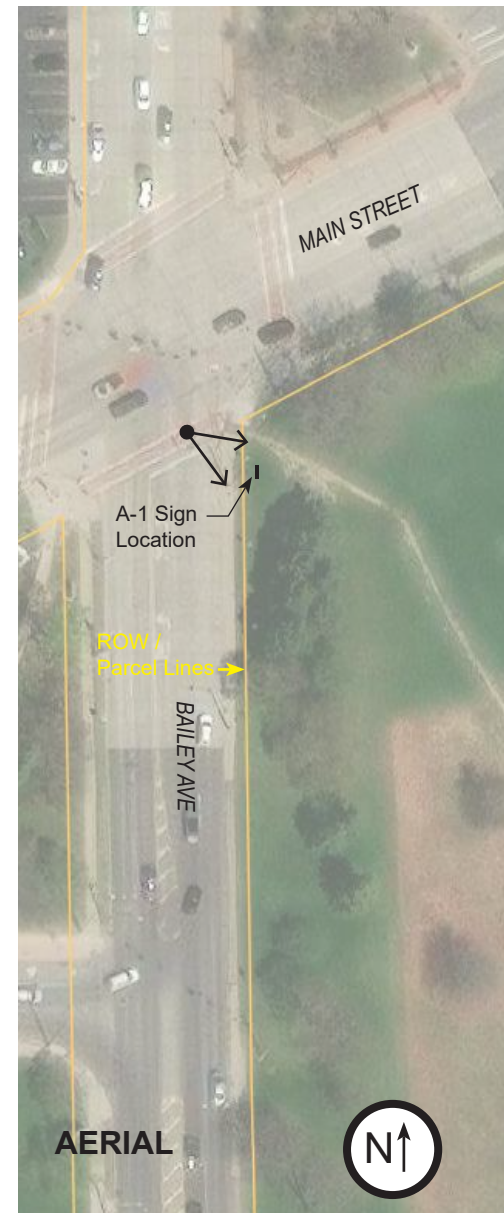
Refer to Overall Signage Location Plans for general location of sign

*Denotes approximate GPS coordinates of sign location - location to be verified in the field prior to installation

GROVER CLEVELAND GOLF COURSE: GC-01



VIEW FROM BAILEY AVE LOOKING SOUTH EAST

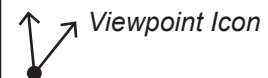


AERIAL

LOCATION:	Main Street and Bailey Ave
ID #:	GC-01
SIGN TYPE:	A-1
GPS COORDINATES:	Latitude: 42.959266* Longitude: -78.813681*
REMARKS:	Replace existing sign, sign to be oriented towards Bailey Ave and Main Street. intersection. (Existing sign to be removed by Erie County prior to construction)

Aerial Notes:

Aerial image taken from Erie County GIS: ROW / parcel lines to be verified in the field



Aerial Not to Scale

SIGN LOCATED WITHIN PARK PROPERTY

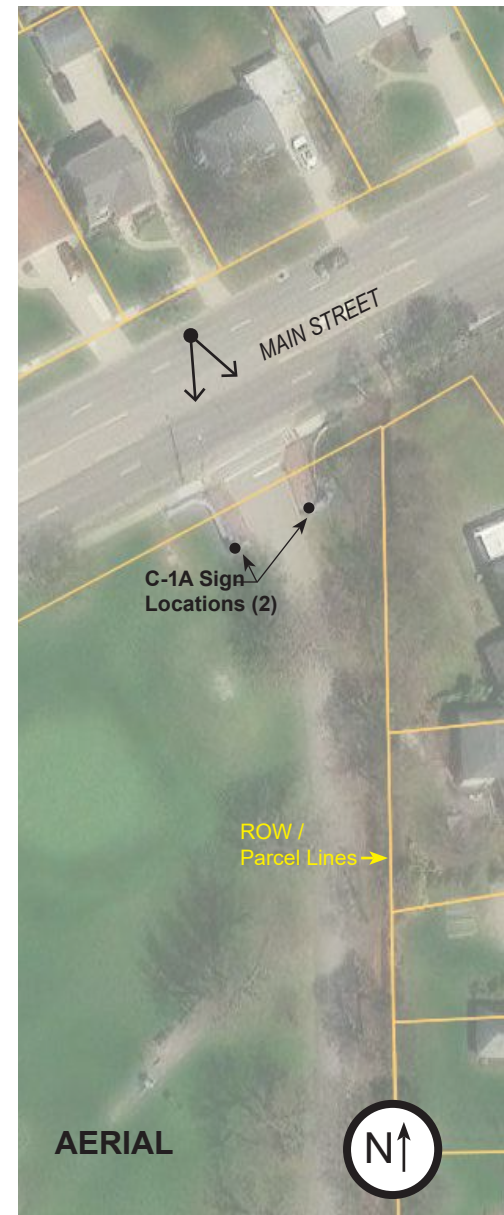
Notes:

Refer to Phase 2 Signage Message Schedule for specific signage content

Refer to Overall Signage Location Plans for general location of sign

*Denotes approximate GPS coordinates of sign location - location to be verified in the field prior to installation

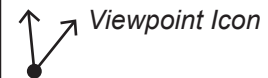
GROVER CLEVELAND GOLF COURSE: GC-02



LOCATION:	Main Street
ID #:	GC-02
SIGN TYPE:	C-1A
GPS COORDINATES:	Latitude: 42.961091* Longitude: -78.809259*
REMARKS:	Signs to be placed onto existing pillars facing Main Street.

Aerial Notes:

Aerial image taken from Erie County GIS: ROW / parcel lines to be verified in the field



Aerial Not to Scale

ROW OWNERSHIP: MAIN ST IS NYSDOT OWNED.

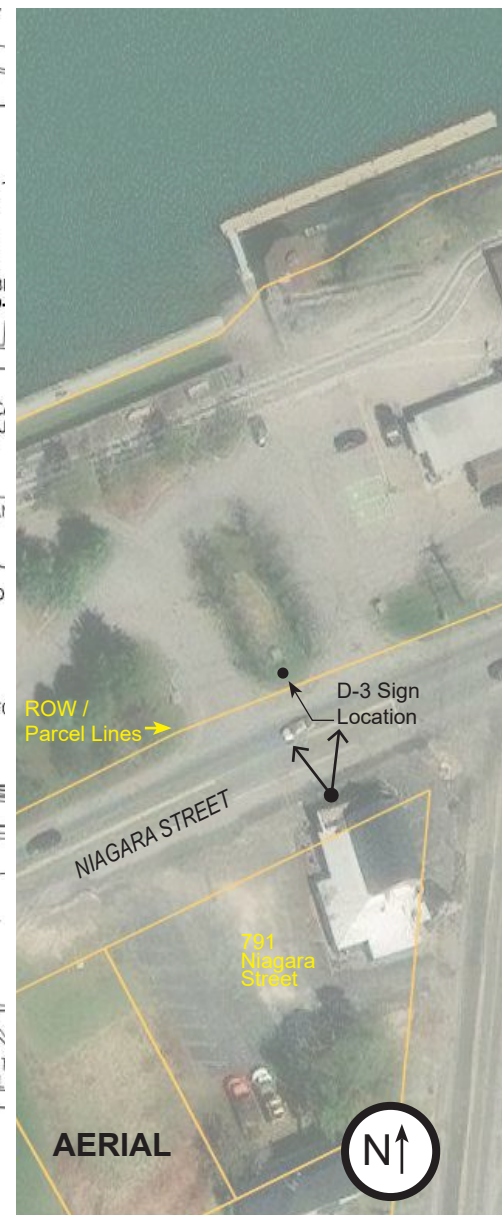
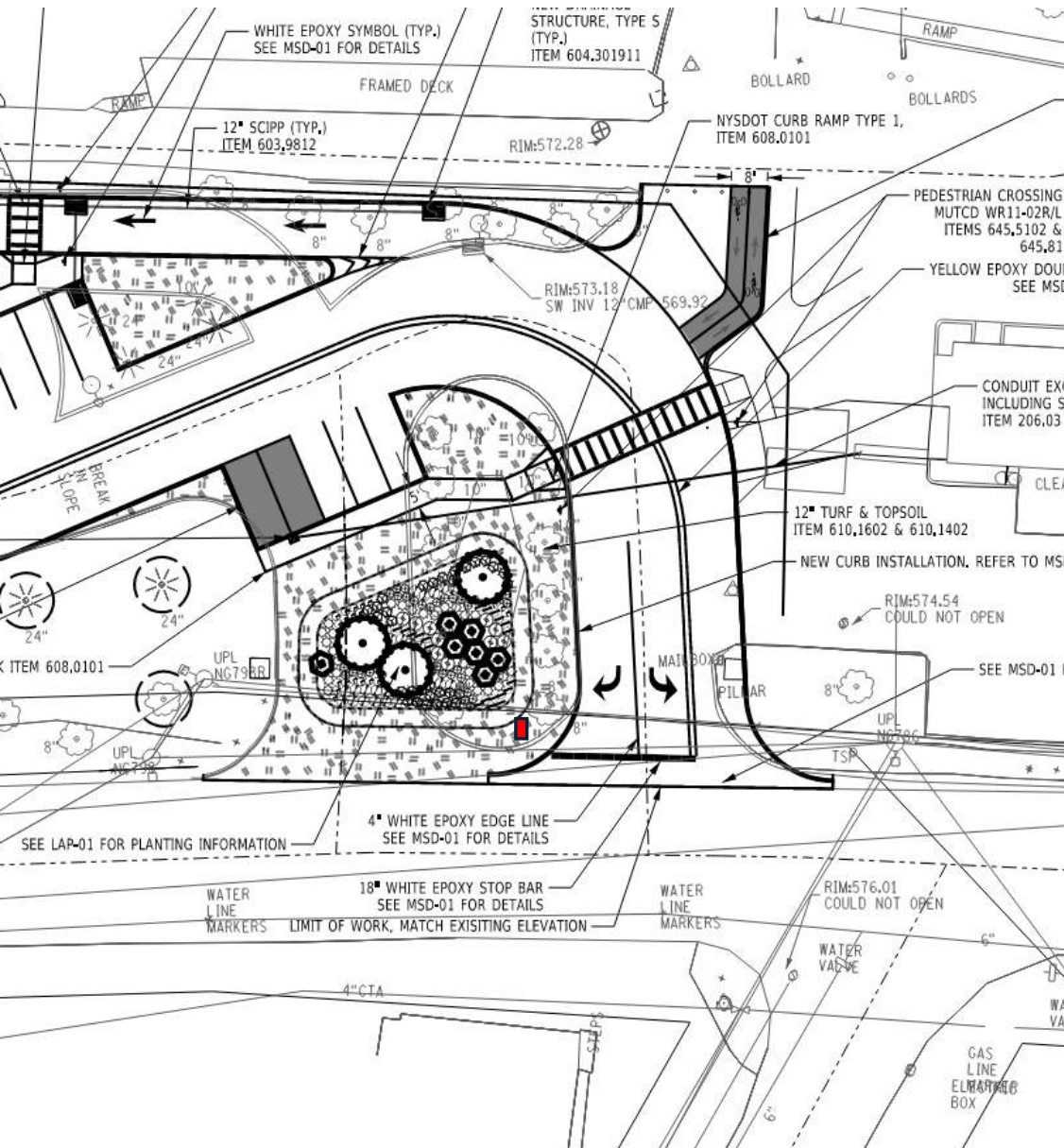
Notes:

Refer to Phase 2 Signage Message Schedule for specific signage content

Refer to Overall Signage Location Plans for general location of sign

*Denotes approximate GPS coordinates of sign location - location to be verified in the field prior to installation

ISLE VIEW PARK: IV-03



LOCATION:	Niagara Street
ID #:	IV-03
SIGN TYPE:	A-2
GPS COORDINATES:	Latitude: 43.010147* Longitude: -78.907586*
REMARKS:	Sign to be oriented perpendicular to Niagara Street.

SIGN LOCATED WITHIN PARK PROPERTY

Notes:

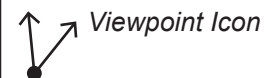
Refer to Phase 2 Signage Message Schedule for specific signage content

Refer to Overall Signage Location Plans for general location of sign

*Denotes approximate GPS coordinates of sign location - location to be verified in the field prior to installation

Aerial Notes:

Aerial image taken from Erie County GIS: ROW / parcel lines to be verified in the field



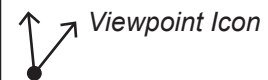
Aerial Not to Scale



LOCATION:	River Road
ID #:	IV-05
SIGN TYPE:	B-1
GPS COORDINATES:	Latitude: 42.001425* Longitude: -78.926028*
REMARKS:	Sign to be oriented perpendicular to River Road (Existing sign to be removed by Erie County prior to construction)

Aerial Notes:

Aerial image taken from Erie County GIS: ROW / parcel lines to be verified in the field



Aerial Not to Scale

SIGN LOCATED WITHIN PARK PROPERTY

Notes:

Refer to Phase 2 Signage Message Schedule for specific signage content

Refer to Overall Signage Location Plans for general location of sign

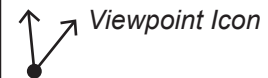
*Denotes approximate GPS coordinates of sign location - location to be verified in the field prior to installation



LOCATION:	Foote Road and Park Road.
ID #:	SP-01
SIGN TYPE:	A-1
GPS COORDINATES:	Latitude: 42.585013* Longitude: -78.638473*
REMARKS:	Sign to be oriented perpendicular to Foote Road (Existing sign to be removed by Erie County prior to construction)

Aerial Notes:

Aerial image taken from Erie County GIS: ROW / parcel lines to be verified in the field



Aerial Not to Scale

SIGN LOCATED WITHIN PARK PROPERTY

Notes:

Refer to Phase 2 Signage Message Schedule for specific signage content

Refer to Overall Signage Location Plans for general location of sign

*Denotes approximate GPS coordinates of sign location - location to be verified in the field prior to installation



VIEW FROM MCKINLEY PARKWAY LOOKING WEST

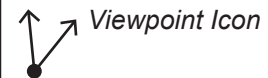


AERIAL

LOCATION:	McKinley pkwy and Bailey Ave parking lot
ID #:	TH-03
SIGN TYPE:	A-2
GPS COORDINATES:	Latitude: 42.860088* Longitude: -78.825895*
REMARKS:	Replace existing panel with new Erie County panel. Base to remain.

Aerial Notes:

Aerial image taken from Erie County GIS: ROW / parcel lines to be verified in the field



Aerial Not to Scale

SIGN LOCATED WITHIN PARK PROPERTY

Notes:

Refer to Phase 2 Signage Message Schedule for specific signage content

Refer to Overall Signage Location Plans for general location of sign

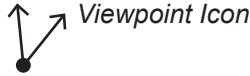
*Denotes approximate GPS coordinates of sign location - location to be verified in the field prior to installation

TOW PATH PARK: TP-01



LOCATION:	Hertel Ave
ID #:	TP-01
SIGN TYPE:	B-1
GPS COORDINATES:	Latitude: 42.940113* Longitude: -78.907437*
REMARKS:	Existing stone block to be removed. Replace with new sign. (Existing stone block to be removed by Erie County prior to construction)

Aerial Notes:
Aerial image taken from Erie County GIS: ROW / parcel lines to be verified in the field



Aerial Not to Scale

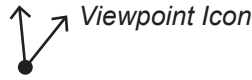
HERTEL AVE IS CITY OF BUFFALO - OWNED.

Notes:
Refer to Phase 2 Signage Message Schedule for specific signage content
Refer to Overall Signage Location Plans for general location of sign
*Denotes approximate GPS coordinates of sign location - location to be verified in the field prior to installation



LOCATION:	Niagara Street, Southbound
ID #:	TP-04
SIGN TYPE:	D-3
GPS COORDINATES:	Latitude: 42.941230* Longitude: -78.905839*
REMARKS:	Sign to be oriented perpendicular to Niagara Street.

Aerial Notes:
Aerial image taken from Erie
County GIS: ROW / parcel lines to
be verified in the field

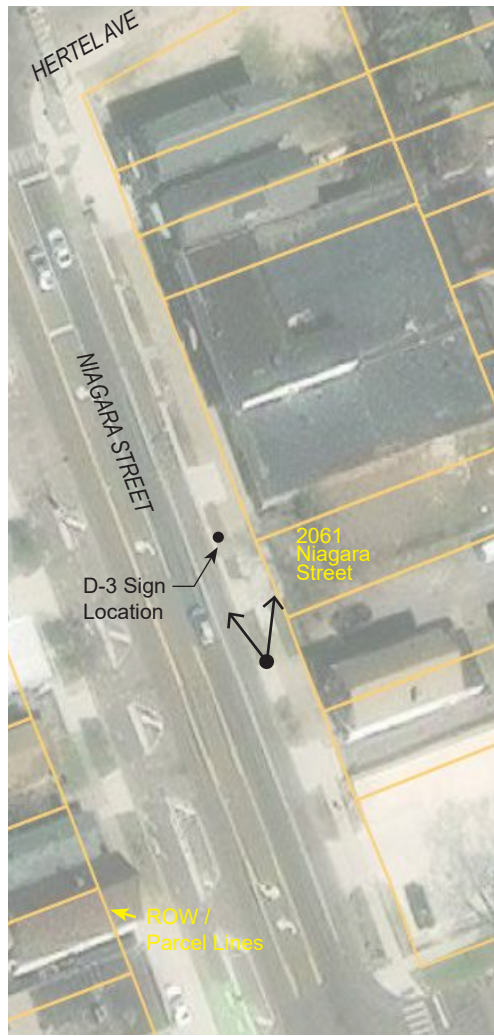


Aerial Not to Scale

NIAGARA STREET IS CITY OF BUFFALO - OWNED.

Notes:
Refer to Phase 2 Signage Message Schedule for specific signage content
Refer to Overall Signage Location Plans for general location of sign
*Denotes approximate GPS coordinates of sign location - location to be verified in the field prior to installation

TOW PATH PARK: TP-05

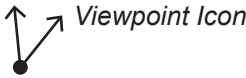


AERIAL



LOCATION:	Niagara Street and Hertel Ave, Northbound
ID #:	TP-05
SIGN TYPE:	D-3
GPS COORDINATES:	Latitude: 42.940266* Longitude: -78.905073*
REMARKS:	Sign to be oriented perpendicular to Niagara Street.

Aerial Notes:
Aerial image taken from Erie County GIS: ROW / parcel lines to be verified in the field



Aerial Not to Scale

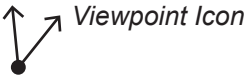
NIAGARA STREET IS CITY OF BUFFALO - OWNED.

Notes:
Refer to Phase 2 Signage Message Schedule for specific signage content
Refer to Overall Signage Location Plans for general location of sign
*Denotes approximate GPS coordinates of sign location - location to be verified in the field prior to installation



LOCATION:	Lake Shore Road and Park Road.
ID #:	WB-04
SIGN TYPE:	A-1
GPS COORDINATES:	Latitude: 42.677396* Longitude: -79.039685*
REMARKS:	Sign to be oriented perpendicular to Lake Shore Road

Aerial Notes:
Aerial image taken from Erie County GIS: ROW / parcel lines to be verified in the field



Aerial Not to Scale

SIGN LOCATED WITHIN PARK PROPERTY

Notes:
 Refer to Phase 2 Signage Message Schedule for specific signage content
 Refer to Overall Signage Location Plans for general location of sign
 *Denotes approximate GPS coordinates of sign location - location to be verified in the field prior to installation