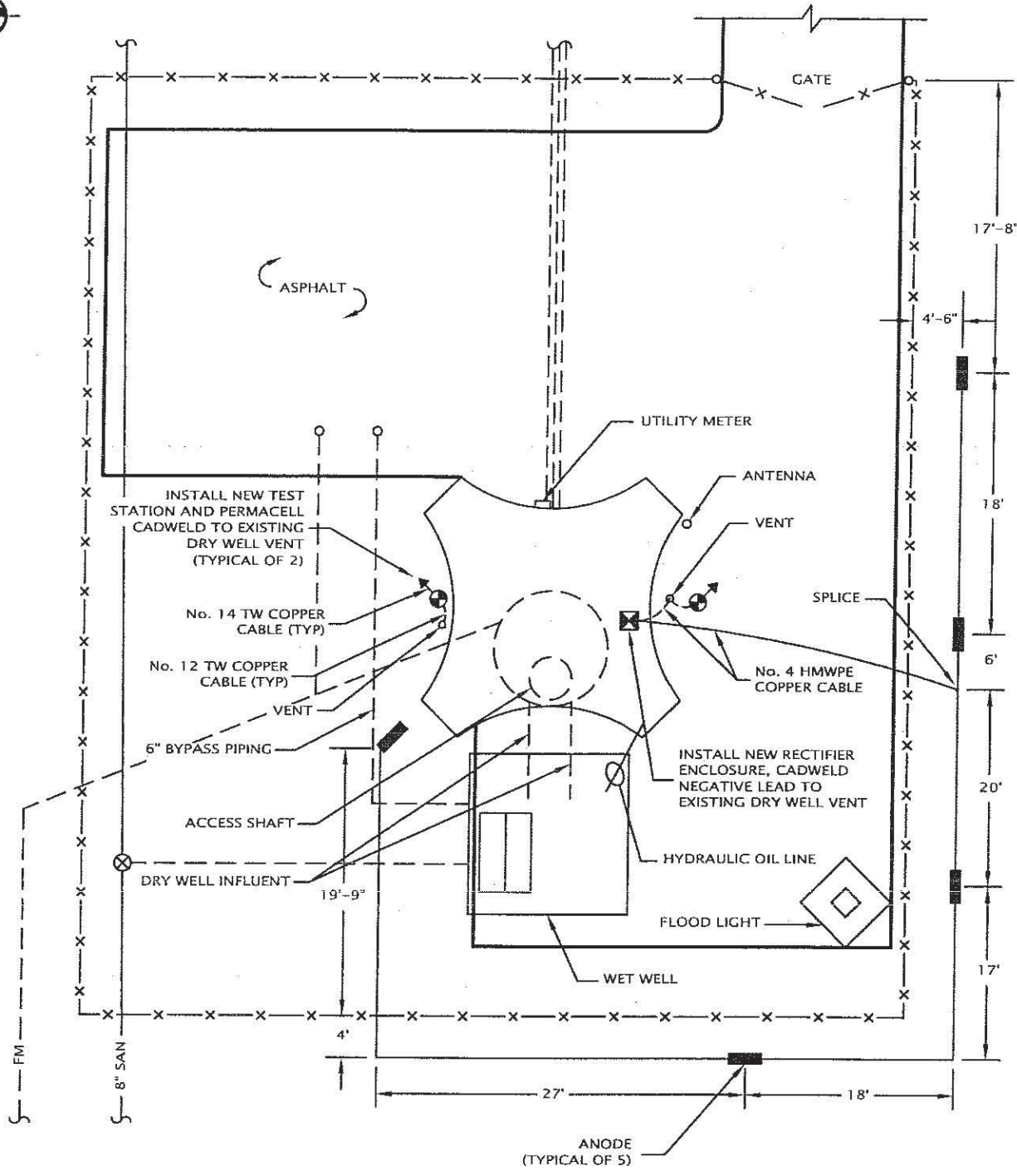




DRAWN BY	J.W.P.
DESIGNED BY	T.G.R.
DATE	2-12-03
SCALE	NONE
SHEET	4 OF 11
DWG. No.	A1-32025C

CORRPRO COMPANIES, INC.
1055 West Smith Road
Medina, Ohio 44258
(330) 723-5082





NO.	DATE	BY	REVISION

CORRPRO COMPANIES, INC.
1055 West Smith Road
Medina, Ohio 44258
(330) 723-5082

DRAWN BY	J.W.P.
DESIGNED BY	T.G.R.
DATE	5-8-03
SCALE	NONE
SHEET	11 OF 11
DWG. No.	AI-32025-C

THIS DESIGN DRAWING IS NOT APPLICABLE FOR USE AS STANDARD CORROSION CONTROL PROCEDURES FOR OTHER PROJECTS DUE TO VARIABLE CONDITIONS AT OTHER SITES. NEITHER THIS DESIGN NOR ANY PART THEREOF MAY BE DUPLICATED IN ANY WAY FOR OTHER PROJECTS, EXCEPT BY WRITTEN AGREEMENT WITH CORRPRO COMPANIES INC.

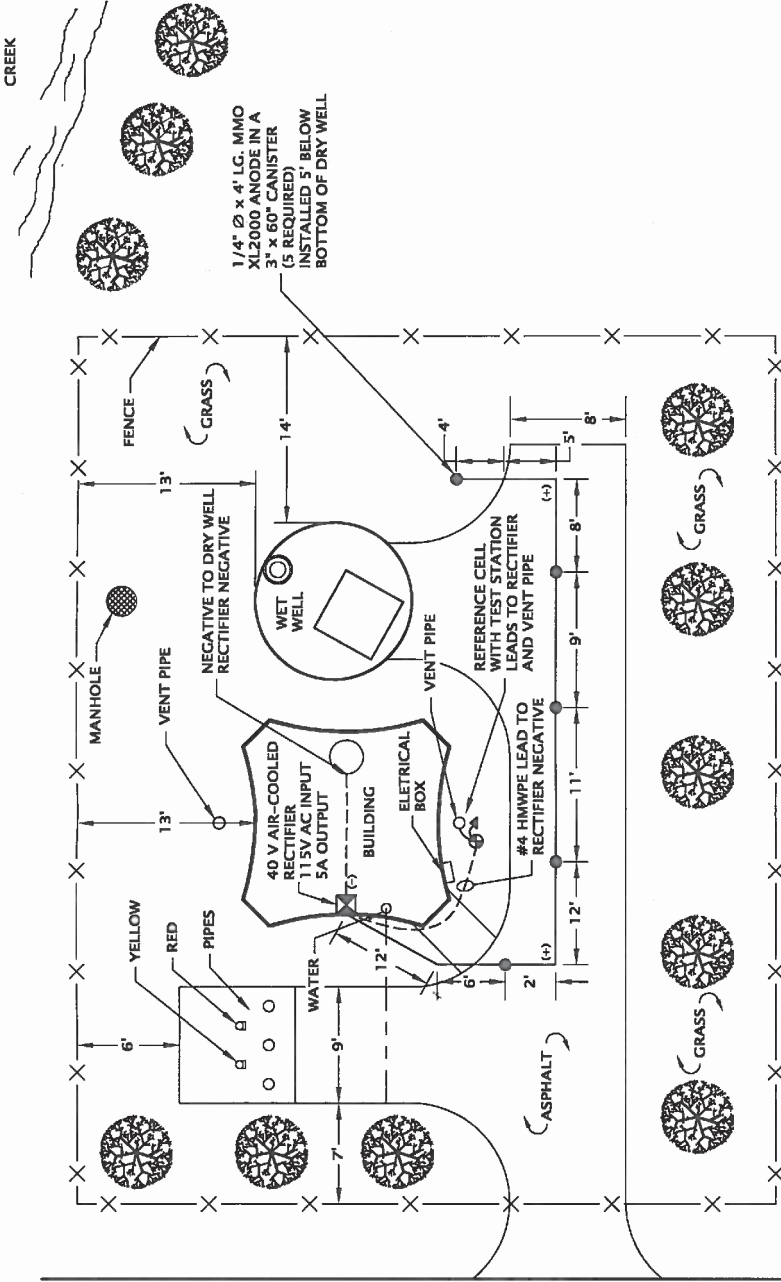
CATHODIC PROTECTION SYSTEM
ON THE
HASKELL PUMP STATION
ERIE COUNTY SEWER DEPARTMENT
LANCASTER, NY



NORTH

RONALD RD.

IROQUOIS AVE.



THIS DESIGN DRAWING IS NOT APPLICABLE FOR USE AS STANDARD CORROSION CONTROL PROCEDURES FOR OTHER PROJECTS DUE TO VARIABLE CONDITIONS AT OTHER SITES. NEITHER THIS DESIGN NOR ANY PART THEREOF MAY BE DUPLICATED IN ANY WAY FOR OTHER PROJECTS, EXCEPT BY WRITTEN AGREEMENT WITH CORRPRO COMPANIES, INC.

DRAWN BY	J.W.P.
DESIGNED BY	T.G.R.
DATE	5-29-03
SCALE	NONE
SHEET	1 OF 1
DWG. No.	BI-32052-C

CATHODIC PROTECTION SYSTEM
ON THE
IROQUOIS AVE. LIFT STATION
TOWN OF LANCASTER, NEW YORK
ERIE COUNTY SEWER DISTRICT No. 4

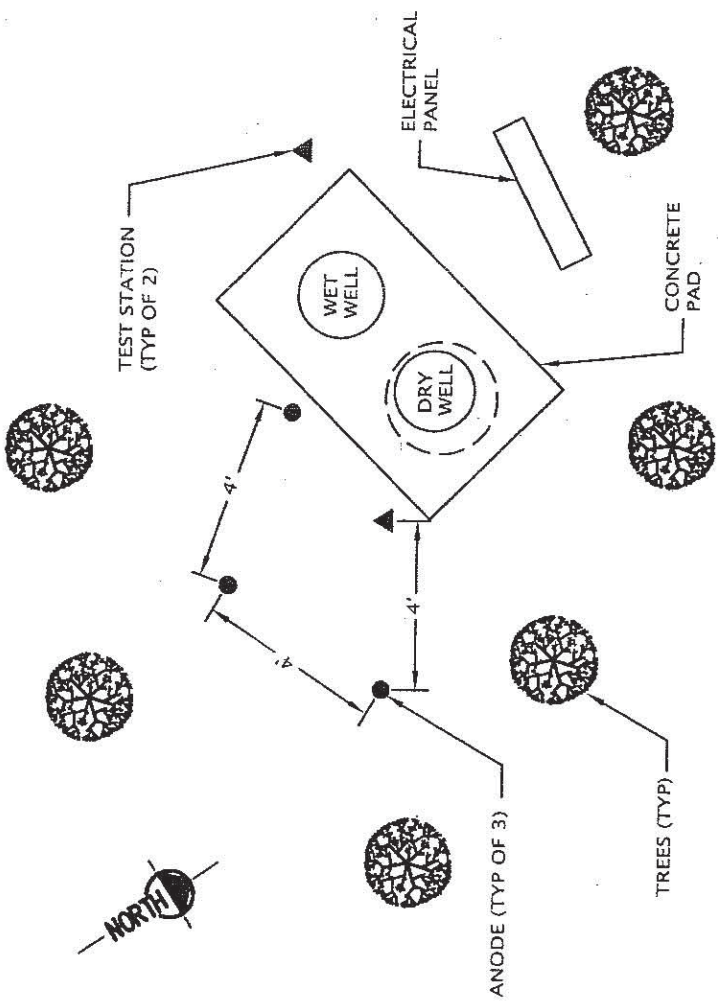
KANDEY CONSTRUCTION CO.
WEST SENECA, N.Y.

REFERENCE DRAWINGS

"AS-BUILT" CATHODIC PROTECTION SYSTEM

REVISION

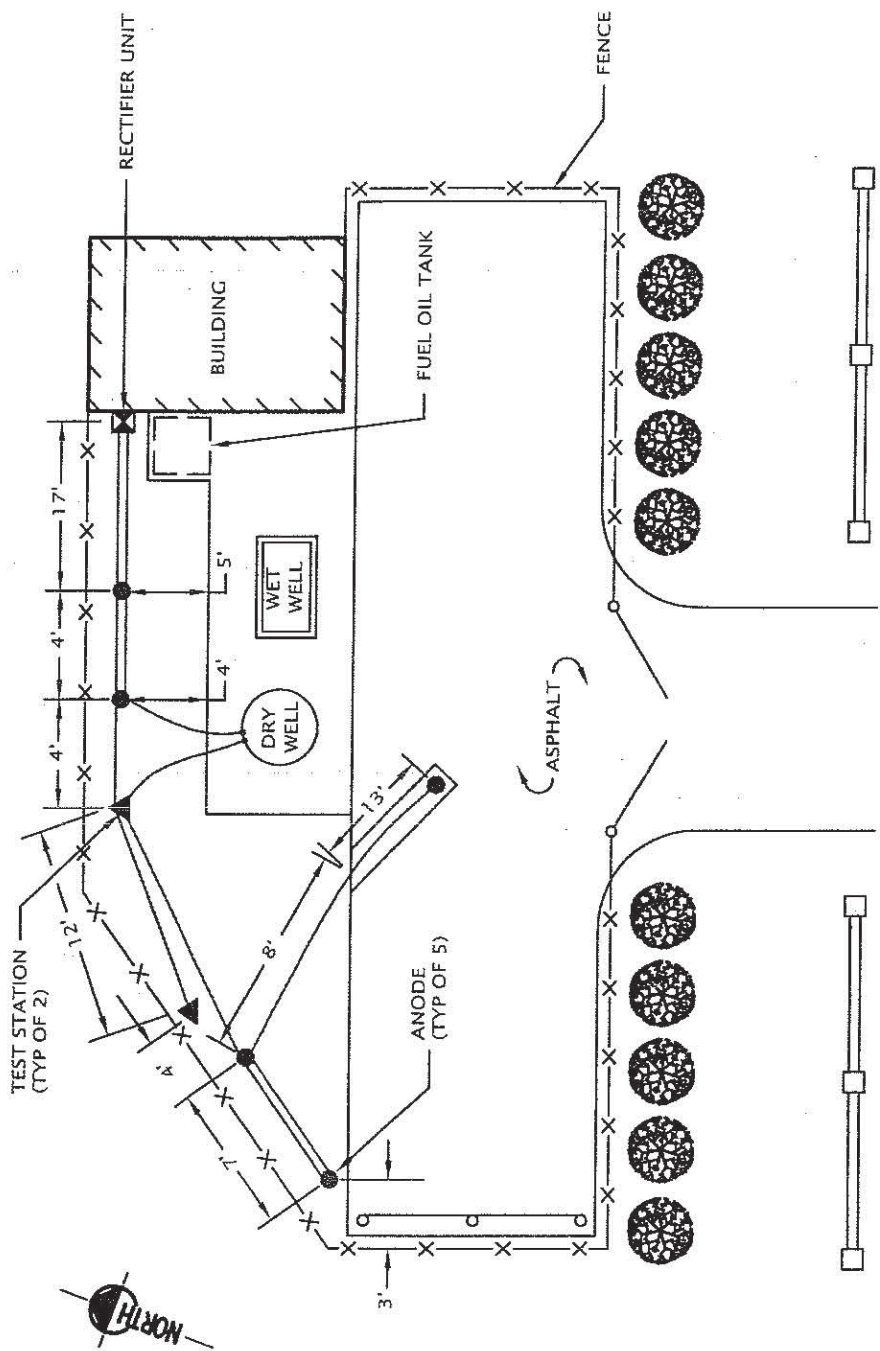
NO.	DATE	BY
1	7-03	L.J.B.



DRIVEWAY

LAKE SHORE ROAD

THIS DESIGN IS NOT APPLICABLE FOR USE AS STANDARD CORROSION CONTROL PROCEDURES FOR OTHER PROJECTS DUE TO VARIABLE CONDITIONS AT OTHER SITES. NEITHER THIS DESIGN NOR ANY PART THEREOF MAY BE DUPLICATED IN ANY WAY FOR OTHER PROJECTS, EXCEPT BY WRITTEN AGREEMENT WITH CORRPRO COMPANIES, INC.		CATHODIC PROTECTION SYSTEM ON THE KELLERMAN PUMP STATION ERIE COUNTY SEWER DEPARTMENT LANCASTER, NY	
NO.	DATE	BY	REVISION
CORRPRO COMPANIES, INC. 1055 West Smith Road Medina, Ohio 44258 (330) 723-5082		DRAWN BY J.W.P. DESIGNED BY T.G.R. DATE 2-24-03 SCALE NONE SHEET 9 OF 11 DWG. No. AI-32025-C	



RT-5 RD

THIS DESIGN IS NOT APPLICABLE FOR USE AS STANDARD CORROSION CONTROL PROCEDURES FOR OTHER PROJECTS DUE TO VARIABLE CONDITIONS AT OTHER SITES. NEITHER THIS DESIGN NOR ANY PART THEREOF MAY BE DUPLICATED IN ANY WAY FOR OTHER PROJECTS, EXCEPT BY WRITTEN AGREEMENT WITH CORRPRO COMPANIES, INC.

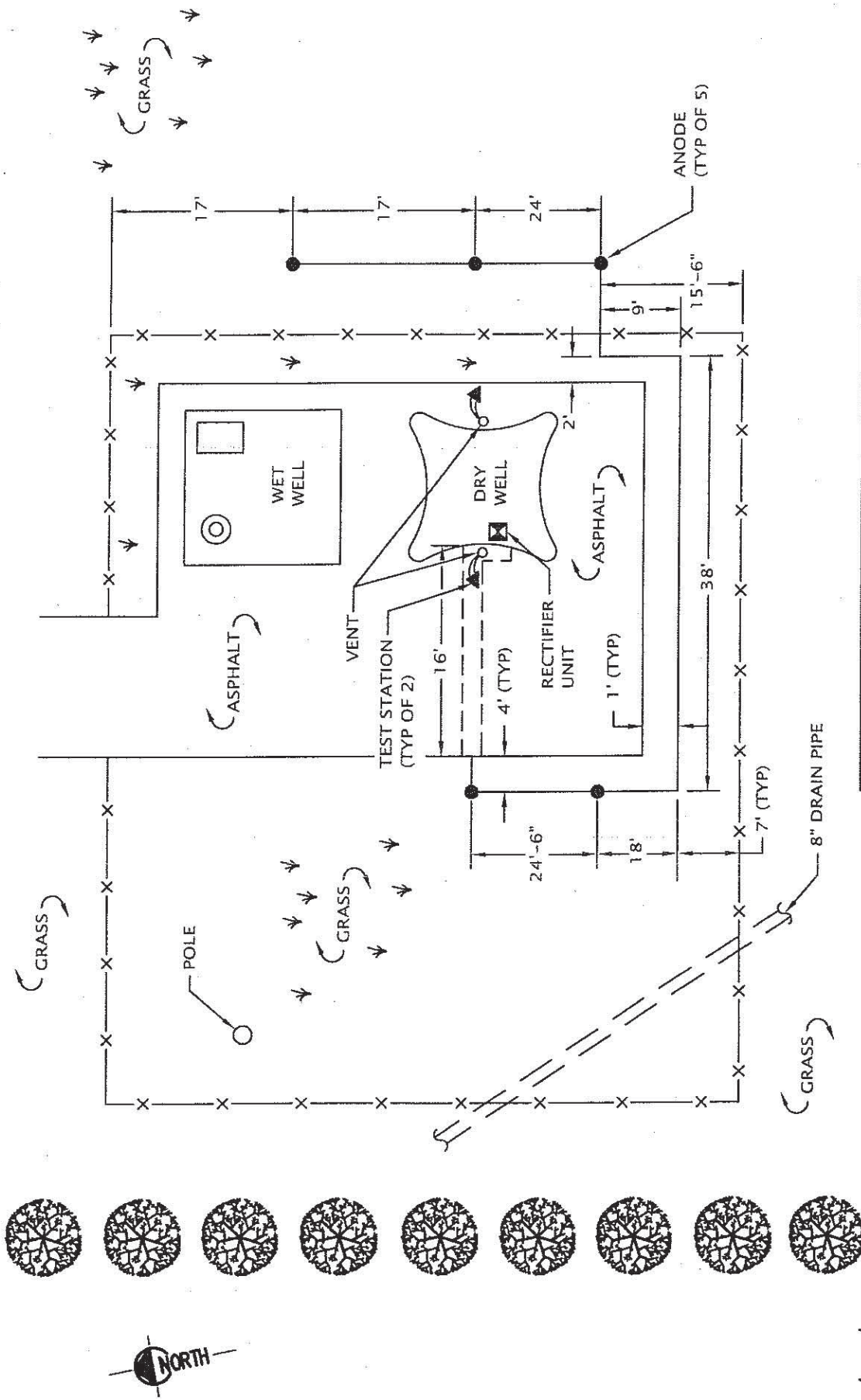
DRAWN BY J.W.P.
DESIGNED BY T.G.R.
DATE 2-24-03
SCALE NONE
SHEET 5 OF 11
DWG. No. AI-32025-C

CORRPRO COMPANIES, INC.
1055 West Smith Road
Medina, Ohio 44258
(330) 723-5082

CATHODIC PROTECTION SYSTEM
ON THE
PINEHURST PUMP STATION
ERIE COUNTY SEWER DEPARTMENT
LANCASTER, NY

REVISION

NO. DATE BY



THIS DESIGN IS NOT APPLICABLE FOR USE AS STANDARD CORROSION CONTROL PROCEDURES FOR OTHER PROJECTS DUE TO VARIABLE CONDITIONS AT OTHER SITES. NEITHER THIS DESIGN NOR ANY PART THEREOF MAY BE DUPLICATED IN ANY WAY FOR OTHER PROJECTS, EXCEPT BY WRITTEN AGREEMENT WITH CORRPRO COMPANIES, INC.

DRAWN BY J.W.P.

DESIGNED BY T.G.R.

DATE 2-12-03

SCALE NONE

SHEET 1 OF 1

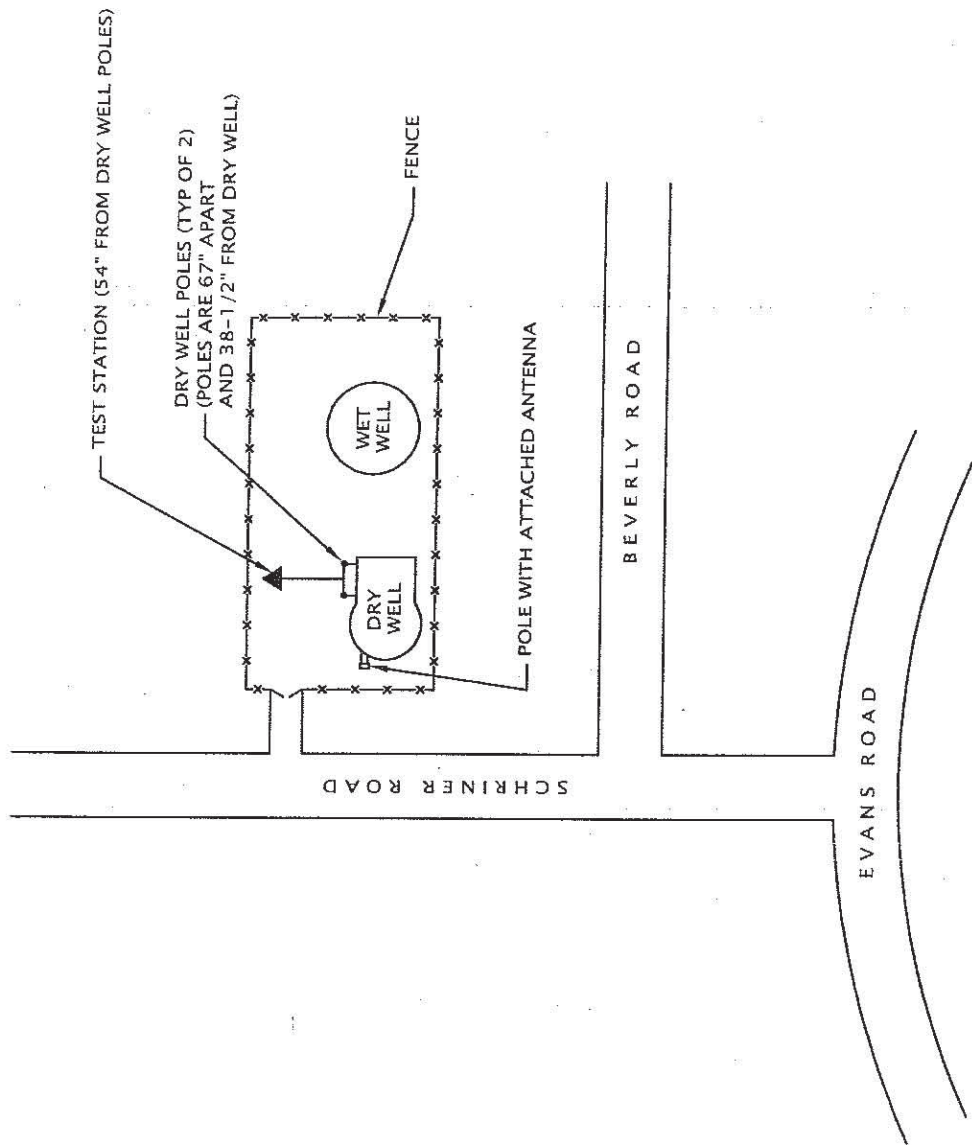
DWG. No. AI-32025-C

REVISION

NO. DATE BY

CORRPRO COMPANIES, INC.
 1055 West Smith Road
 Medina, Ohio 44258
 (330) 723-5082

CATHODIC PROTECTION SYSTEM
 ON THE
 PLEASANT VIEW PUMP STATION
 ERIE COUNTY SEWER DEPARTMENT
 LANCASTER, NY



THIS DESIGN IS NOT APPLICABLE FOR USE AS STANDARD CORROSION CONTROL PROCEDURES FOR OTHER PROJECTS DUE TO VARIABLE CONDITIONS AT OTHER SITES. NEITHER THIS DESIGN NOR ANY PART THEREOF MAY BE DUPLICATED IN ANY WAY FOR OTHER PROJECTS, EXCEPT BY WRITTEN AGREEMENT WITH CORRPRO COMPANIES, INC.

DRAWN BY J.W.P.

DESIGNED BY T.G.R.

DATE 2-24-03

SCALE NONE

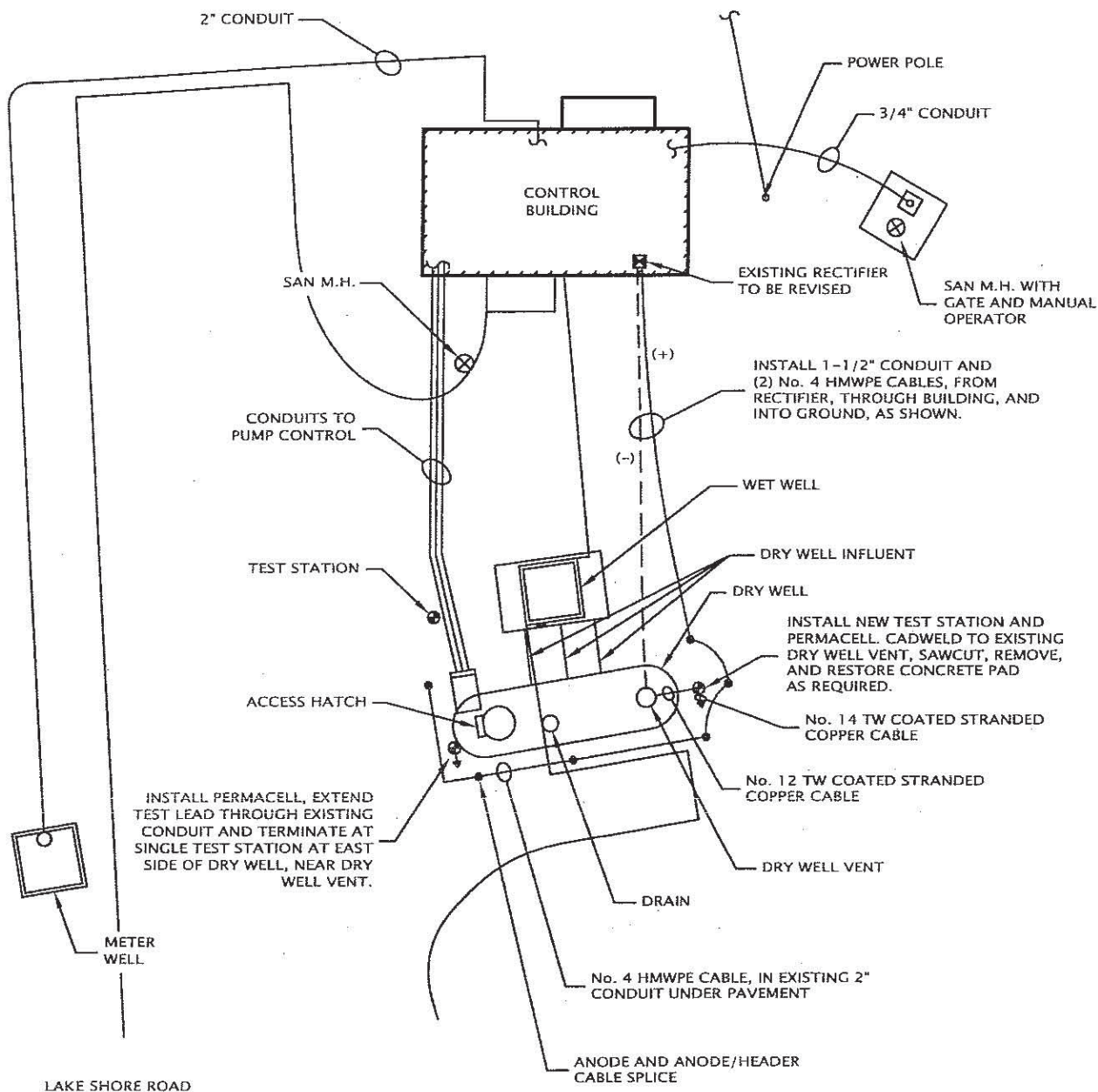
SHEET 8 OF 11

DWG. No. A1-32025-C

CORRPRO COMPANIES, INC.
 1055 West Smith Road
 Medina, Ohio 44258
 (330) 723-5082

CATHODIC PROTECTION SYSTEM
 ON THE
 SCHRINER ROAD PUMP STATION
 ERIE COUNTY SEWER DEPARTMENT
 LANCASTER, NY

NO.	DATE	BY	REVISION



NO.	DATE	BY	REVISION

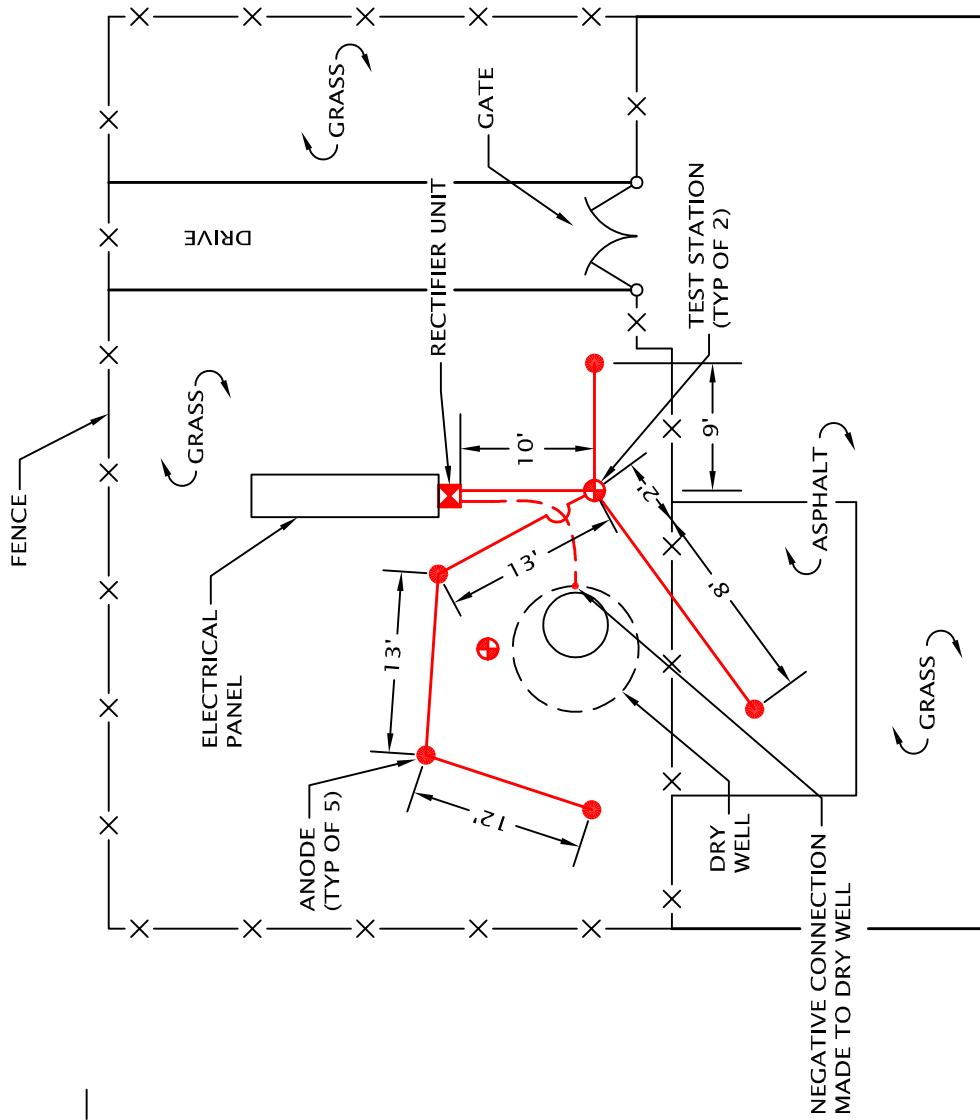


CORRPRO COMPANIES, INC.
1055 West Smith Road
Medina, Ohio 44258
(330) 723-5082

DRAWN BY	J.W.P.
DESIGNED BY	T.G.R.
DATE	5-8-03
SCALE	NONE
SHEET	10 OF 11
DWG. No.	A1-32025-C

THIS DESIGN DRAWING IS NOT APPLICABLE FOR USE AS STANDARD CORROSION CONTROL PROCEDURES FOR OTHER PROJECTS DUE TO VARIABLE CONDITIONS AT OTHER SITES. NEITHER THIS DESIGN NOR ANY PART THEREOF MAY BE DUPLICATED IN ANY WAY FOR OTHER PROJECTS, EXCEPT BY WRITTEN AGREEMENT WITH CORRPRO COMPANIES INC.

CATHODIC PROTECTION SYSTEM
ON THE
SWEETLAND DRIVE PUMP STATION
ERIE COUNTY SEWER DEPARTMENT
LANCASTER, NY



NO.	DATE	BY

REVISION

NO.	DATE	BY

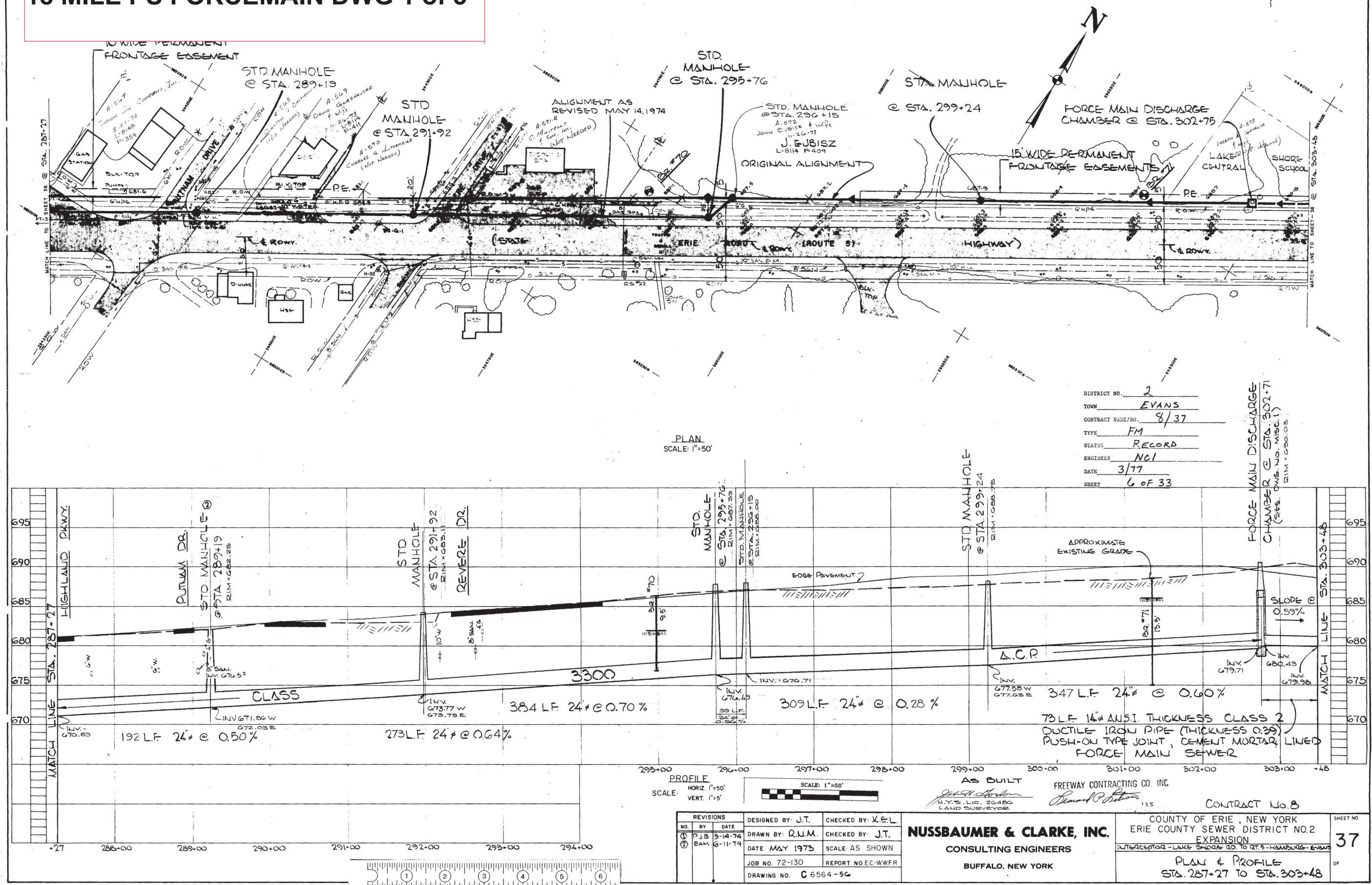
THIS DESIGN IS NOT APPLICABLE FOR USE AS STANDARD CORROSION CONTROL PROCEDURES FOR OTHER PROJECTS DUE TO VARIABLE CONDITIONS AT OTHER SITES. NEITHER THIS DESIGN NOR ANY PART THEREOF MAY BE DUPLICATED IN ANY WAY FOR OTHER PROJECTS, EXCEPT BY WRITTEN AGREEMENT WITH CORRPRO COMPANIES, INC.

DRAWN BY	J.W.P.
DESIGNED BY	T.G.R.
DATE	2-12-03
SCALE	NONE
SHEET	3 OF 11
DWG. No.	A1-32025-C

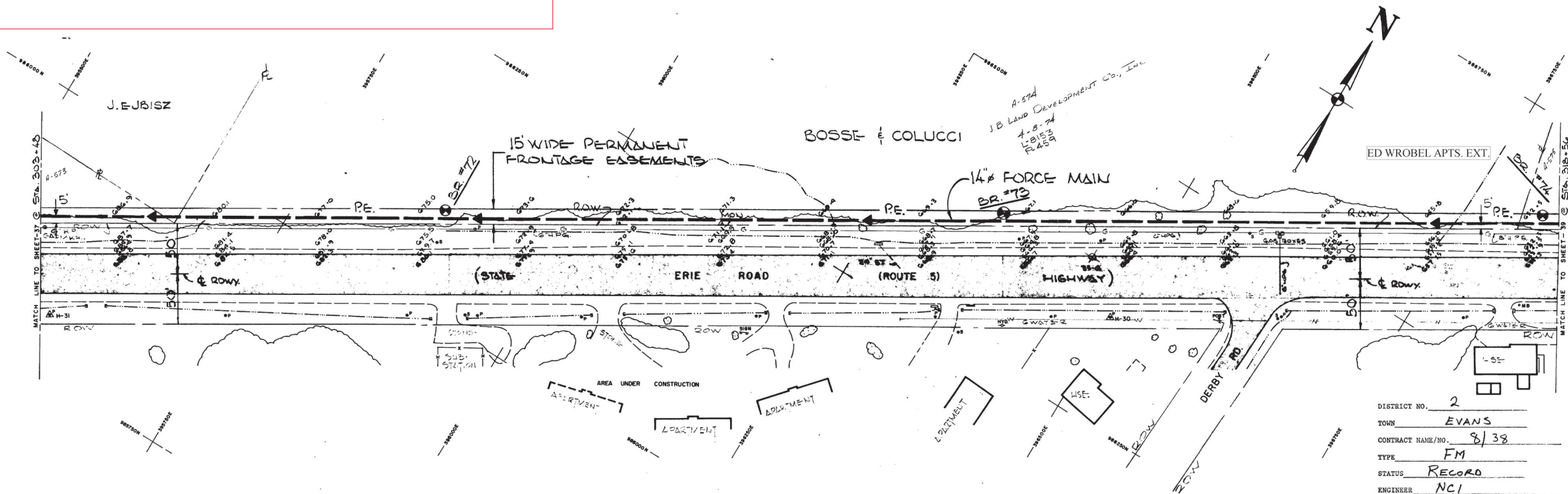
CATHODIC PROTECTION SYSTEM
ON THE
COMMERCE DRIVE PUMP STATION
ERIE COUNTY SEWER DEPARTMENT
LANCASTER, NY

CORRPRO COMPANIES, INC.
1055 West Smith Road
Medina, Ohio 44258
(330) 723-5082

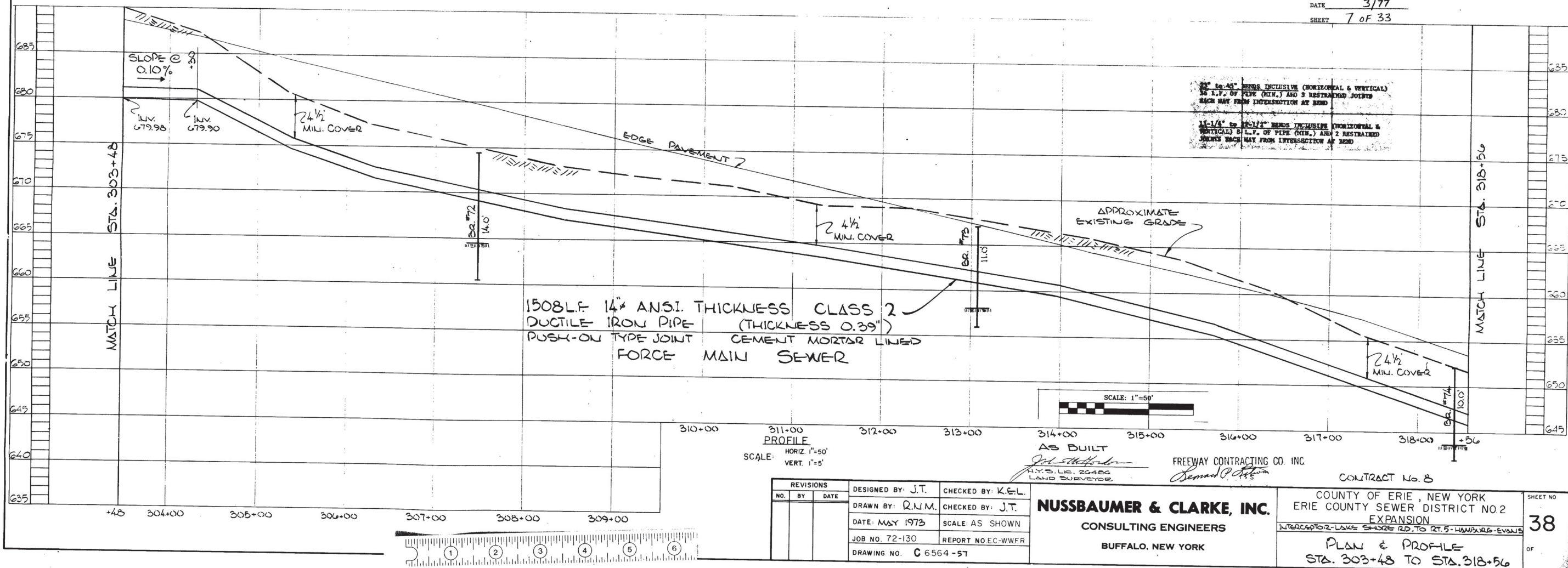
18 MILE PS FORCEMAIN DWG 1 of 3



18 MILE PS FORCEMAIN DWG 2 of 3



DISTRICT NO. 2
 TOWN EVANS
 CONTRACT NAME/NO. 8/38
 TYPE FM
 STATUS RECORD
 ENGINEER NCI
 DATE 3/77
 SHEET 7 OF 33



PROFILE
 SCALE: HORIZ. 1"=50'
 VERT. 1"=5'

SCALE: 1"=50'

REVISIONS			DESIGNED BY: J.T.	CHECKED BY: K.E.L.
NO.	BY	DATE	DRAWN BY: R.N.M.	CHECKED BY: J.T.
			DATE: MAY 1973	SCALE: AS SHOWN
			JOB NO. 72-130	REPORT NO. EC-WWFR
			DRAWING NO. C 6564-57	

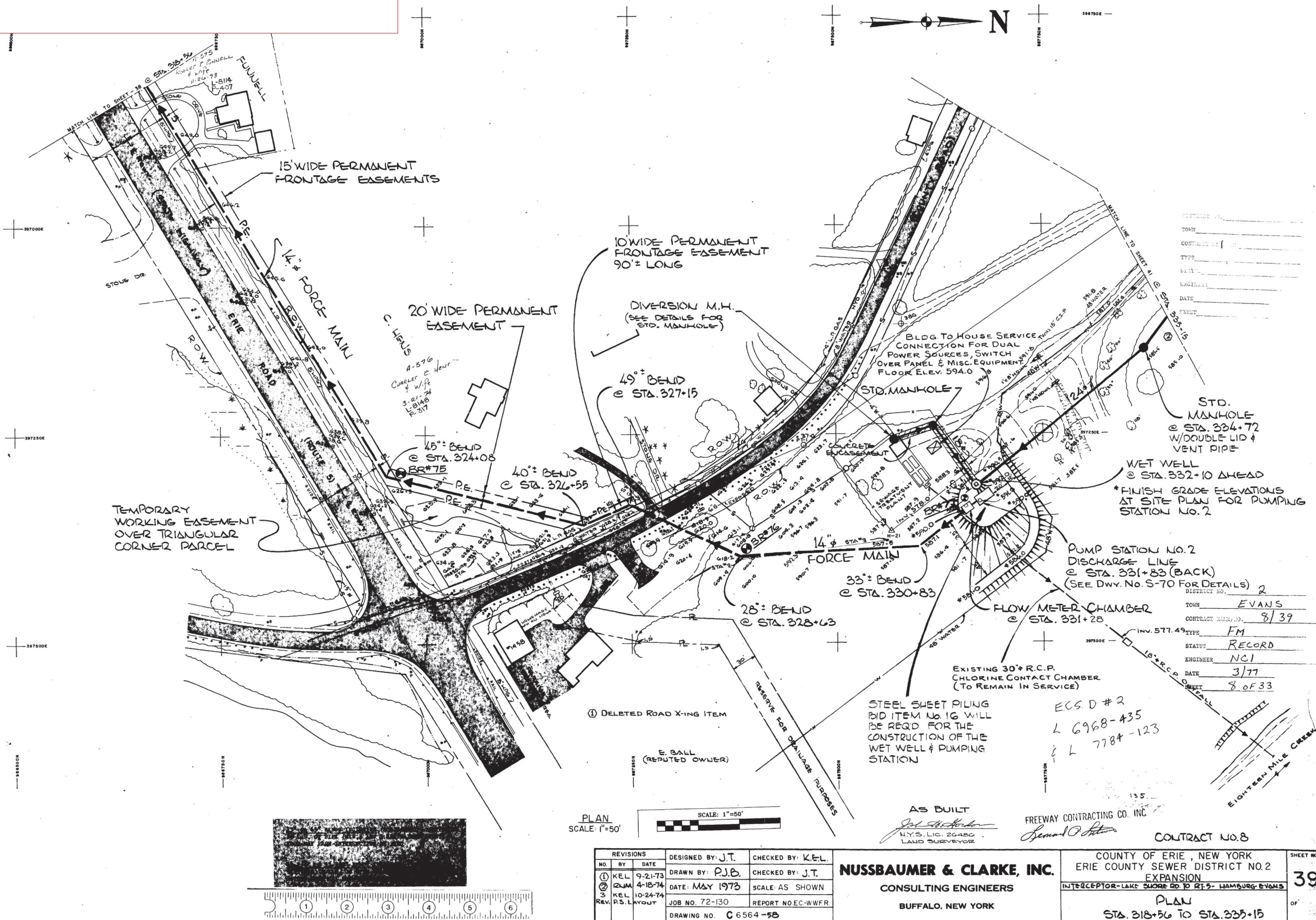
NUSSBAUMER & CLARKE, INC.
 CONSULTING ENGINEERS
 BUFFALO, NEW YORK

CONTRACT NO. 8
 COUNTY OF ERIE, NEW YORK
 ERIE COUNTY SEWER DISTRICT NO. 2
 EXPANSION
 INTERCEPTOR-LAKE SHORE RD. TO RT. 5-HAMPSHIRE-EVANS
 PLAN & PROFILE
 STA. 303+48 TO STA. 318+56

SHEET NO.
38
 OF

15-007

18 MILE PS FORCEMAIN DWG 3 of 3



15008